

BUILDING CODE DATA

Current Codes Used for Code Information

Maine State Building Code	2009
IBC International Building Code	2009
IECC Int Energy Conservation Code	2009
NFPA 101, Life Safety Code	2009

INTERIOR FINISH CLASSIFICATION

ROOMS & SPACES - CLASS C

PROJECT DATA

CODE: MAINE STATE BUILDING CODE
AMENDMENTS, SEE ABOVE
PROJECT NAME: 190 RIVERSIDE DRIVE UNIT 1A - Maine Accessibility Corp
PROJECT ADDRESS: 190 RIVERSIDE DRIVE, PORTLAND, ME 04101
PARCEL ID, CBL: 267 A005001
ZONING CLASSIFICATION: B4 COMMERCIAL BUSINESS
OCCUPANCY TYPE: BUSINESS (B), IBC 2009 303.1
THE BUILDING IS SPRINKLED
OCCUPANCY FRONT AREA: GROSS SF 451/100=4.5 (5)
OCCUPANCY STORAGE/SHIPPING AREA: GROSS SF 1,579/300=5.2 (5)
TOTAL BUILDING GROSS SF: 27,000
MIXED OCCUPANCIES IN BUILDING WITH EXISTING RATED SEPARATION
NUMBER OF STORIES: 1 STORIES
CONSTRUCTION TYPE: TYPE II-B
AFFECTED GROSS AREA OF CONSTRUCTION SQR. FOOTAGE: 2,030 S.F.

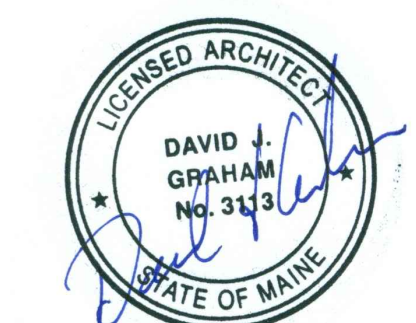
GENERAL CONTRACTOR

STRUCTURAL ENGINEER

MEP ENGINEER

CLIENT

PROJECT
Maine Accessibility Corp
 190 Riverside Drive, Unit 1A
 Portland, ME 04101



ISSUED FOR PERMIT

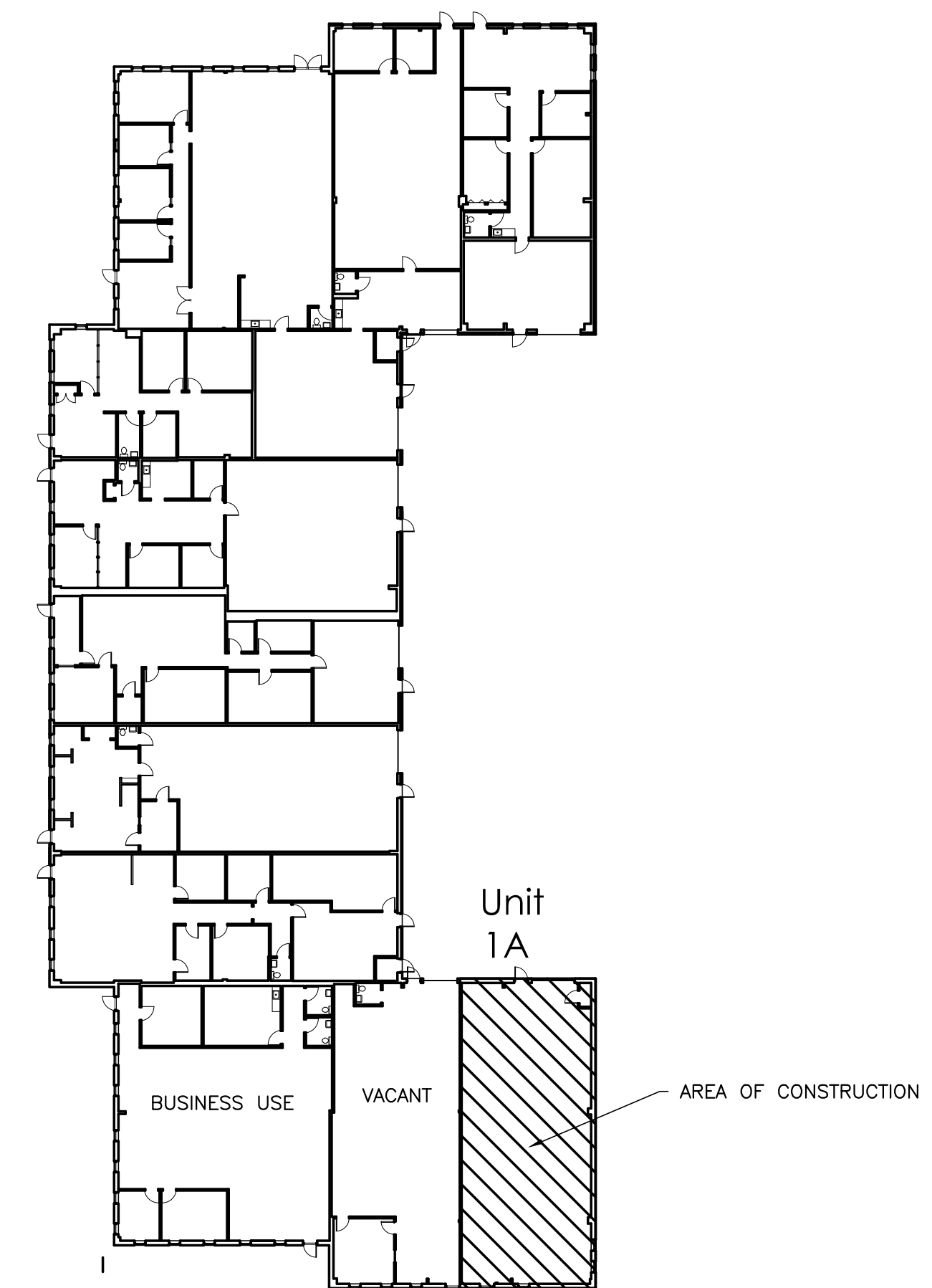
INFORMATION
 Path: M:/boulos/190 riverside
 Issue Date: 03/30/16
 Drawn By: djg
 Checked By:
 Revision:
 1.
 2.
 3.
 4.

TITLE
PROPOSED PLAN AND CODE DATA

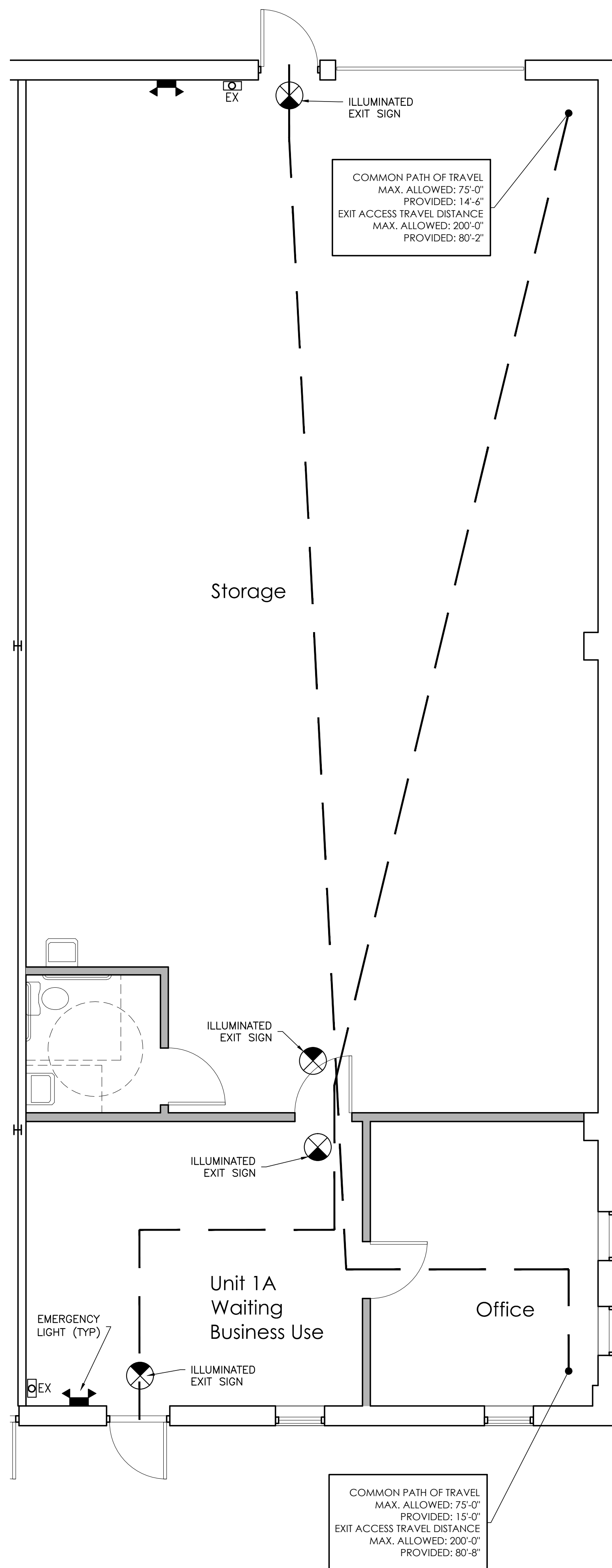
SCALE
 1/4"=1'-0"

© 2016 Graham Architects. All rights reserved. Information, material, and designs in this document are proprietary to and owned by Graham Architects and may not be disclosed to any third party, reproduced, posted on a global computer information network, or distributed in any way without the written consent from Graham Architects.

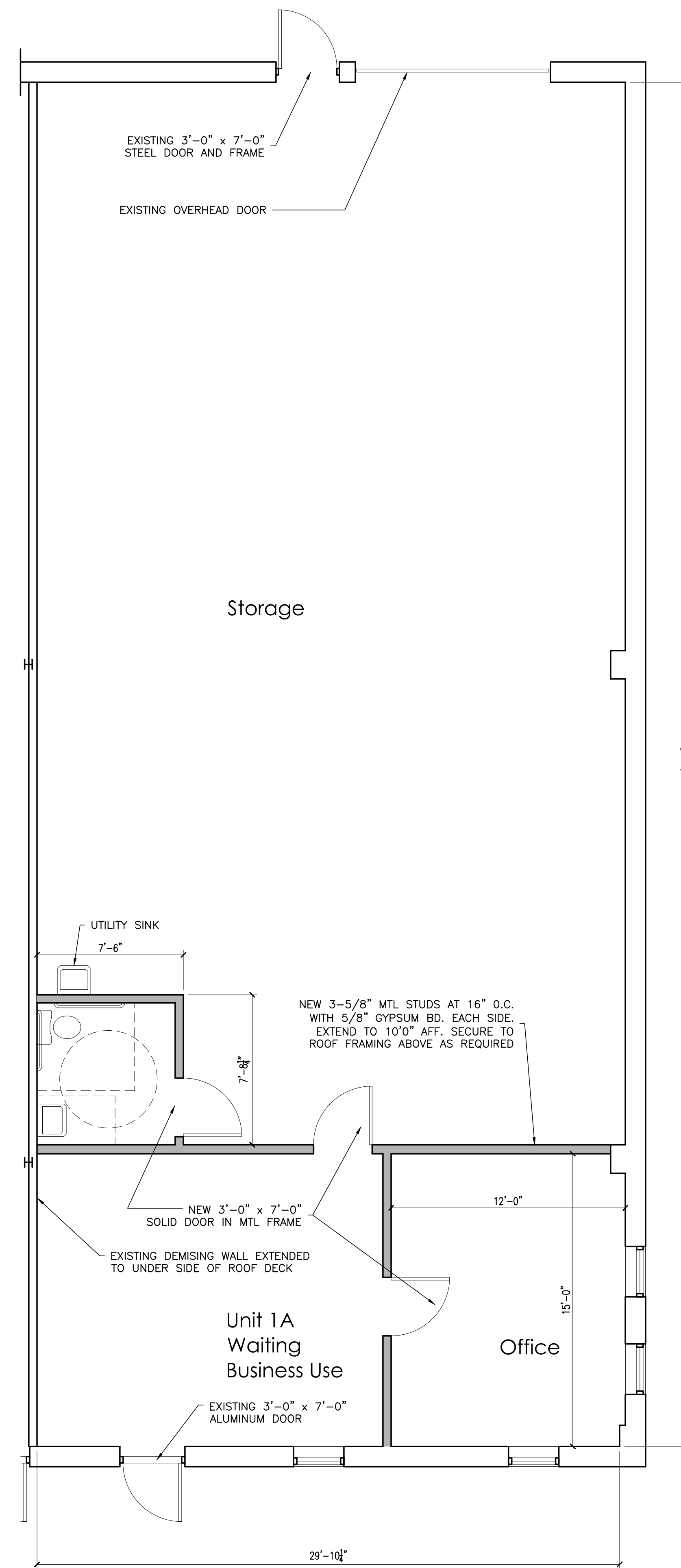
A-1



PROPOSED ELEVATOR MAINTENANCE OFFICE
 OCCUPANCY CALCULATION BUSINESS USE 100 SF GROSS
 IBC 2009 303.1 (BUSINESS USE CLASSIFICATION)



3 1/4"=1'-0" PROPOSED LIFE SAFETY PLAN



2 1/4"=1'-0" PROPOSED PLAN

DO NOT SCALE DRAWINGS

1 1/32"=1'-0" BUILDING KEY PLAN AND CODE DATA