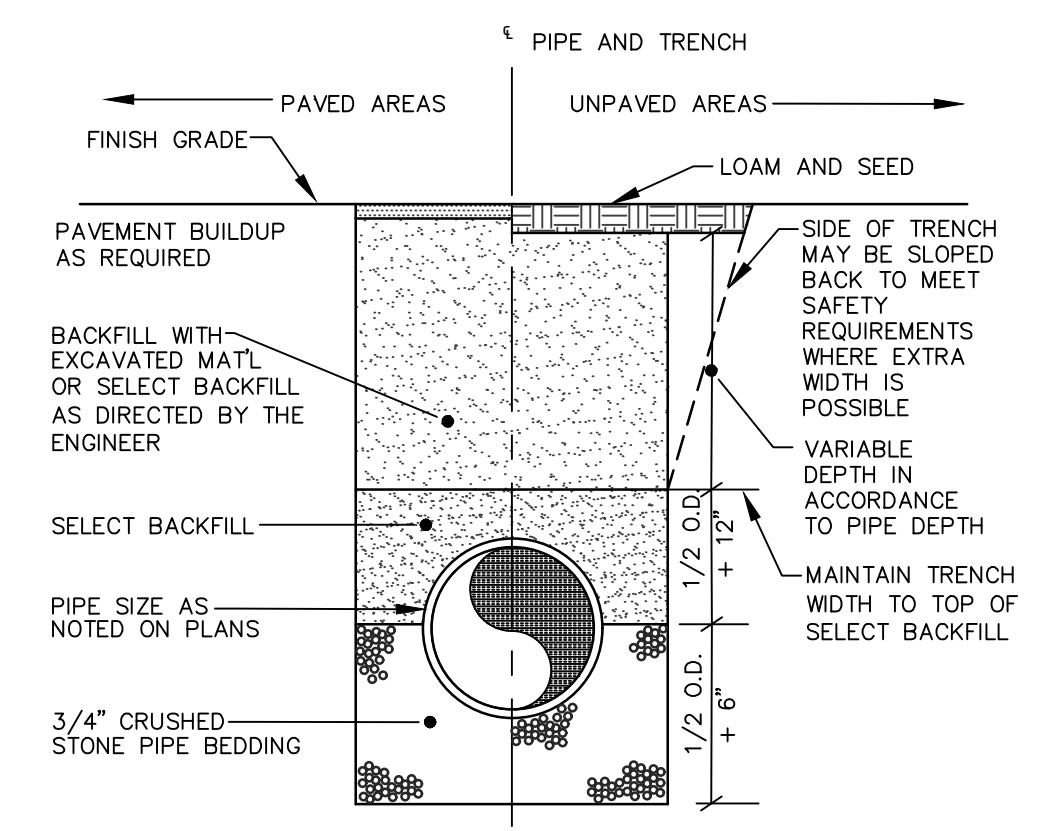
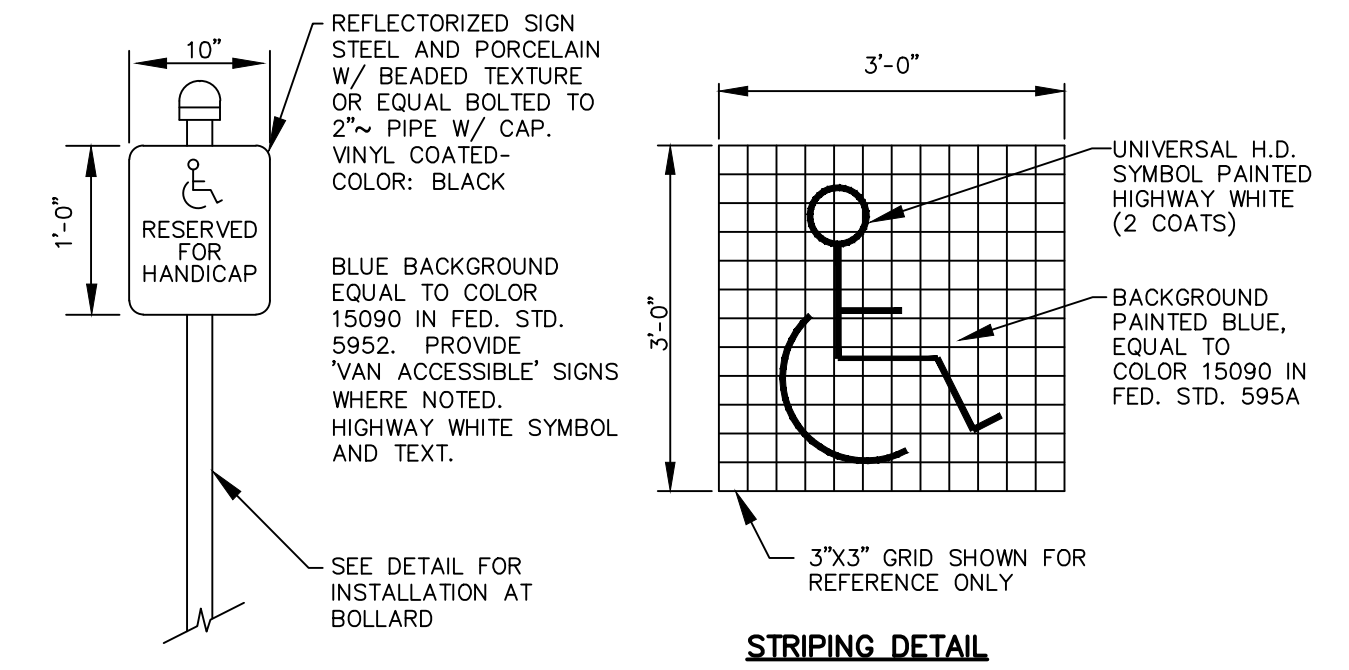


- NOTES:**
1. CONSTRUCT AN EARTHEN BERM A MINIMUM 6" ABOVE LEVEL LIP THAT EXTENDS AROUND BACK AND SIDES SO THAT STORMWATER RUNOFF IS DIRECTED OVER THE LEVEL LIP.
  2. SEE GRADING PLANS FOR LEVEL SPREADER LENGTH.

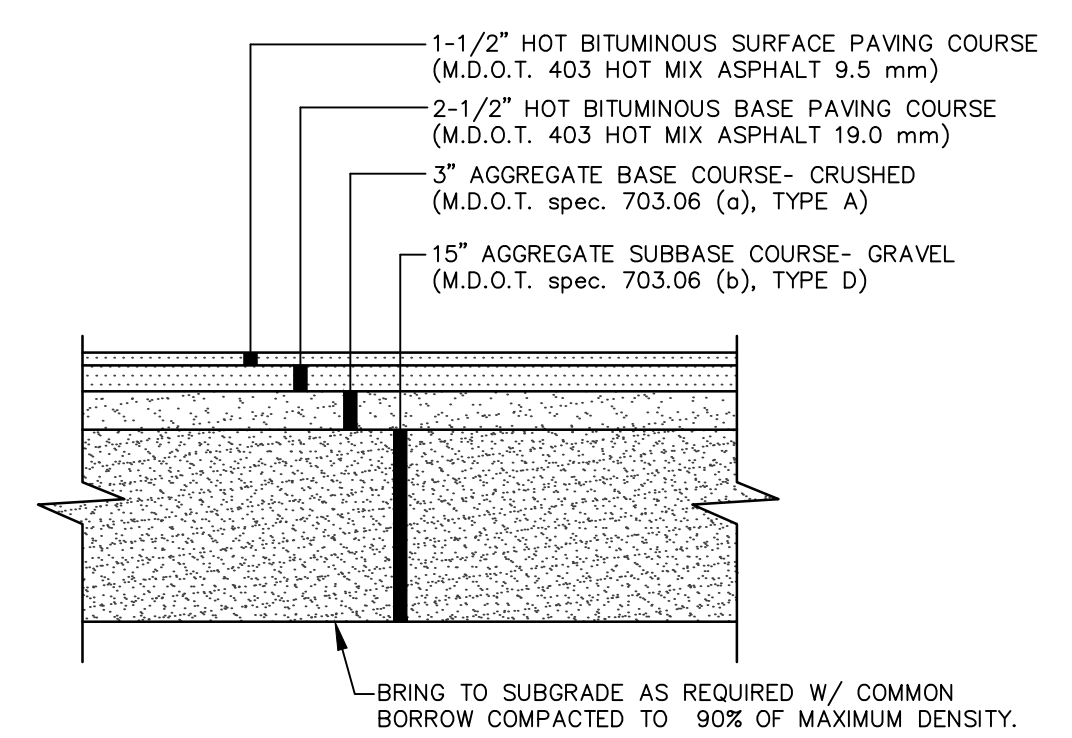
**GRASS BERMED LEVEL LIP SPREADER**  
NOT TO SCALE



**TYPICAL TRENCH SECTION**  
NOT TO SCALE

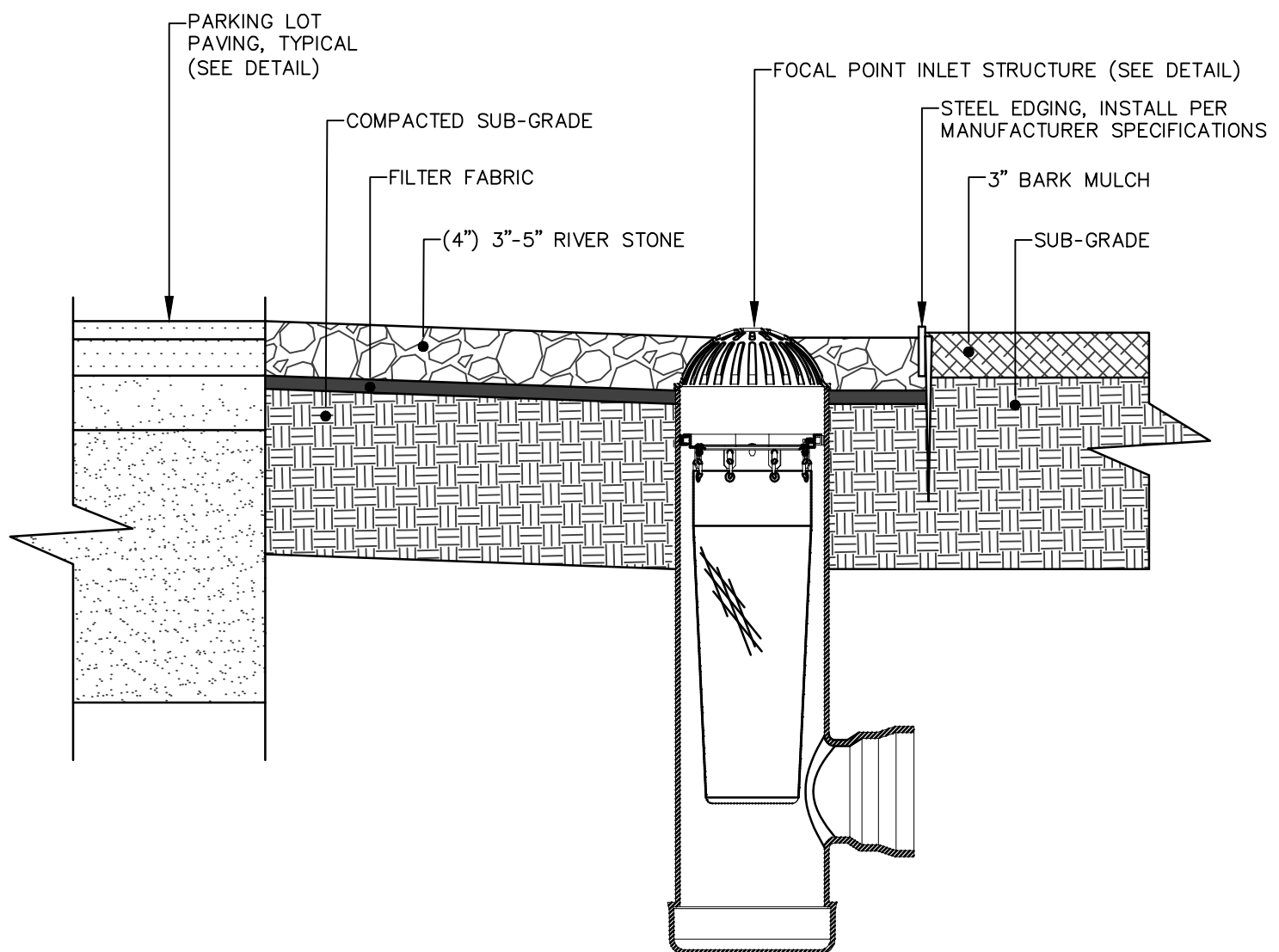


**HANDICAP SIGNS AND STRIPING**  
NOT TO SCALE

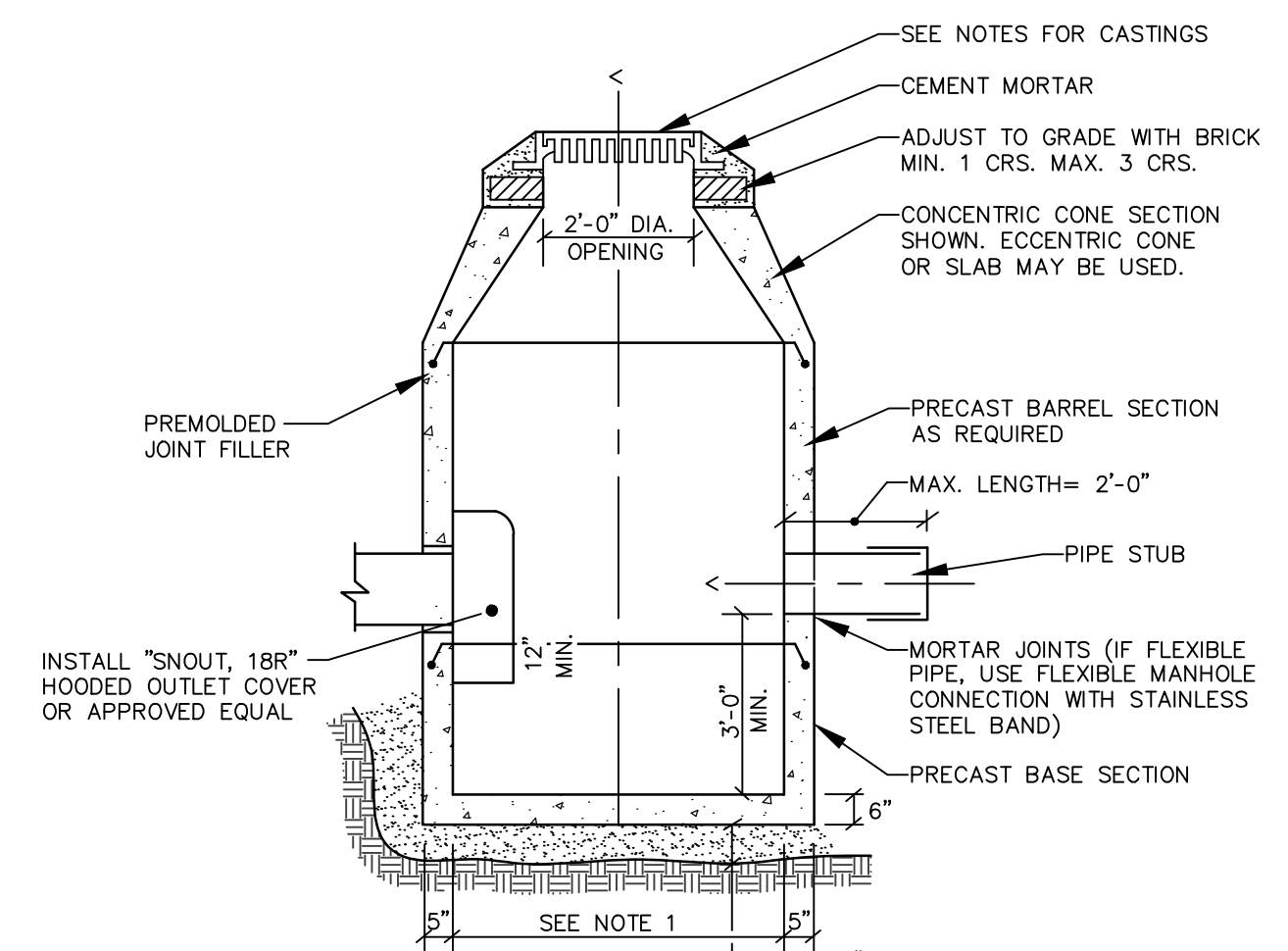


- NOTES:**
1. COMPACT GRAVEL SUBBASE, BASE COURSE TO 92% OF MAXIMUM DENSITY USING HEAVY ROLLER COMPACTION.
  2. CONTRACTOR SHALL SET GRADE STAKES MARKING SUBBASE AND FINISH GRADE ELEVATIONS FOR CONSTRUCTION REFERENCE.
  3. CONTRACTOR MAY REPLACE BITUMINOUS PAVING SECTION WITH TWO (2) 1-1/2" LIFTS OF 12.5mm SUPERPAVE MIX. SUBMIT PAVEMENT MIX DESIGN PRIOR TO CONSTRUCTION.

**TYP. PAVED PARKING LOT SECTION**  
NOT TO SCALE

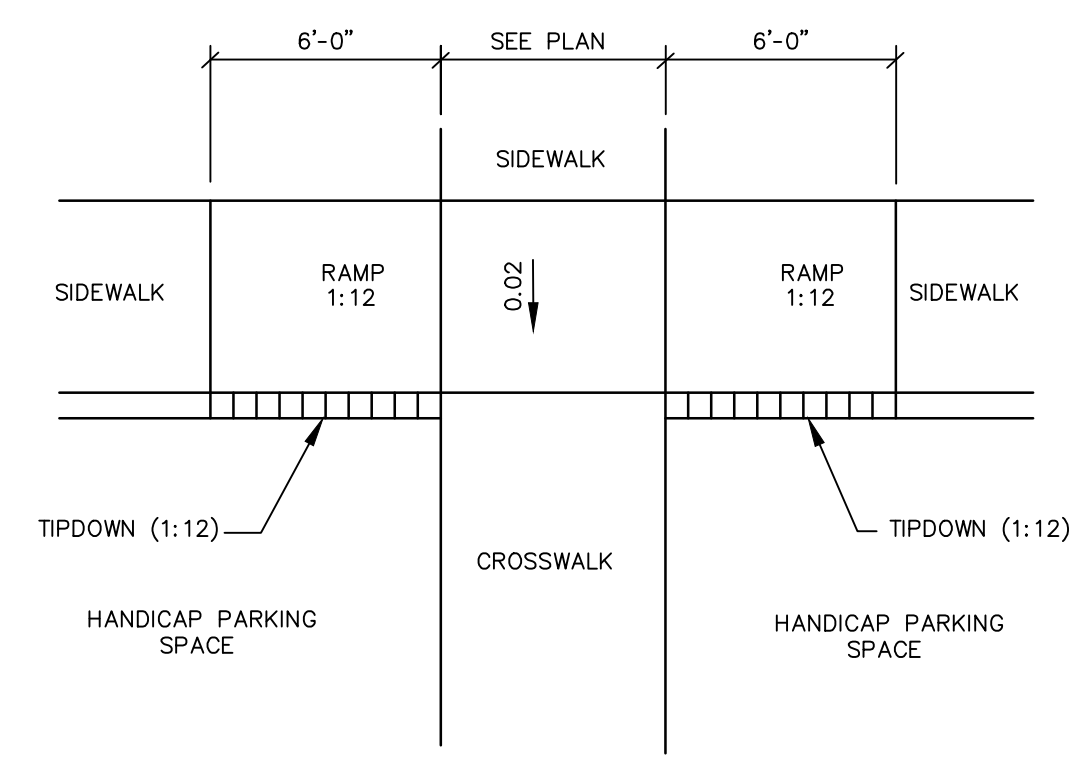


**DECORATIVE STONE SPREADER**  
NOT TO SCALE

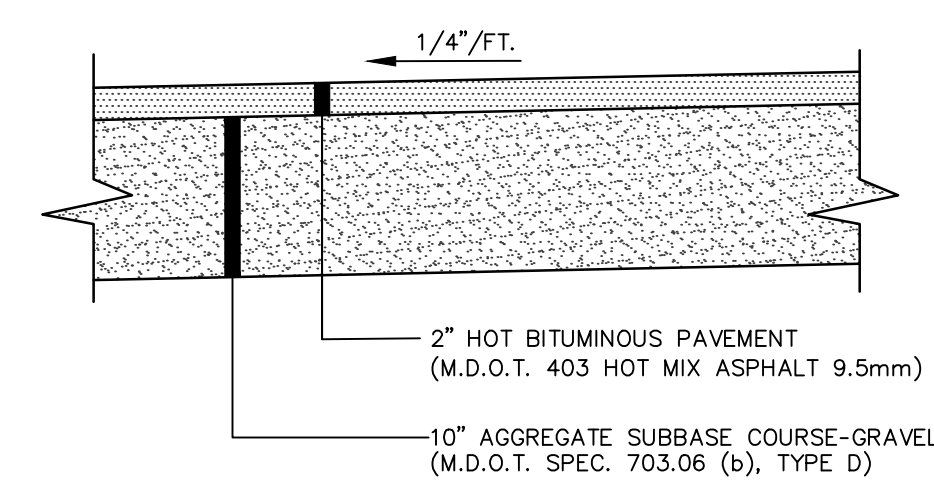


- NOTES:**
1. 4'-0" I.D. TYPICAL. SOME STRUCTURES MAY REQUIRE LARGER I.D. PROVIDE SHOP DRAWINGS.
  2. DRAINAGE STRUCTURES TO BE DESIGNED FOR H-20 LOADING.
  3. PIPE SIZES AND INVERTS AS NOTED ON PLANS.
  4. CATCH BASIN FRAME AND GRATE TO BE EAST JORDAN FOUNDRY 5250, OR APPROVED EQUAL.
  5. DRAIN MANHOLE FRAME AND GRATE TO BE EAST JORDAN FOUNDRY 1080, TYPE A OR APPROVED EQUAL. COVER SHALL BE MARKED "DRAIN".

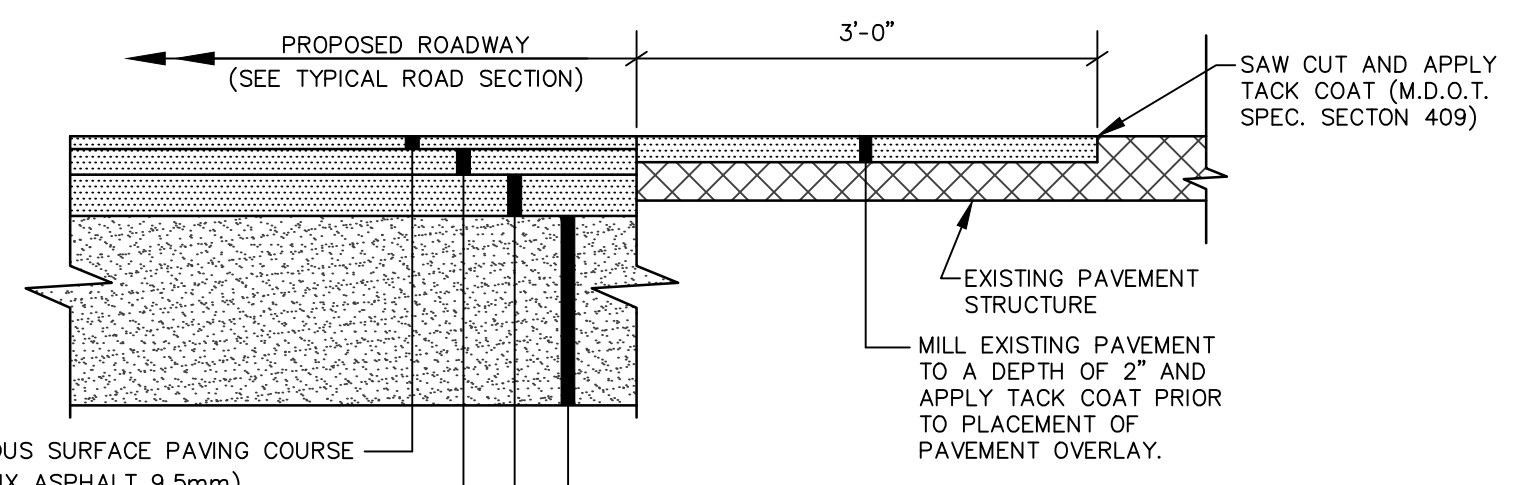
**TYPICAL DRAINAGE MANHOLE/CATCH BASIN**  
NOT TO SCALE



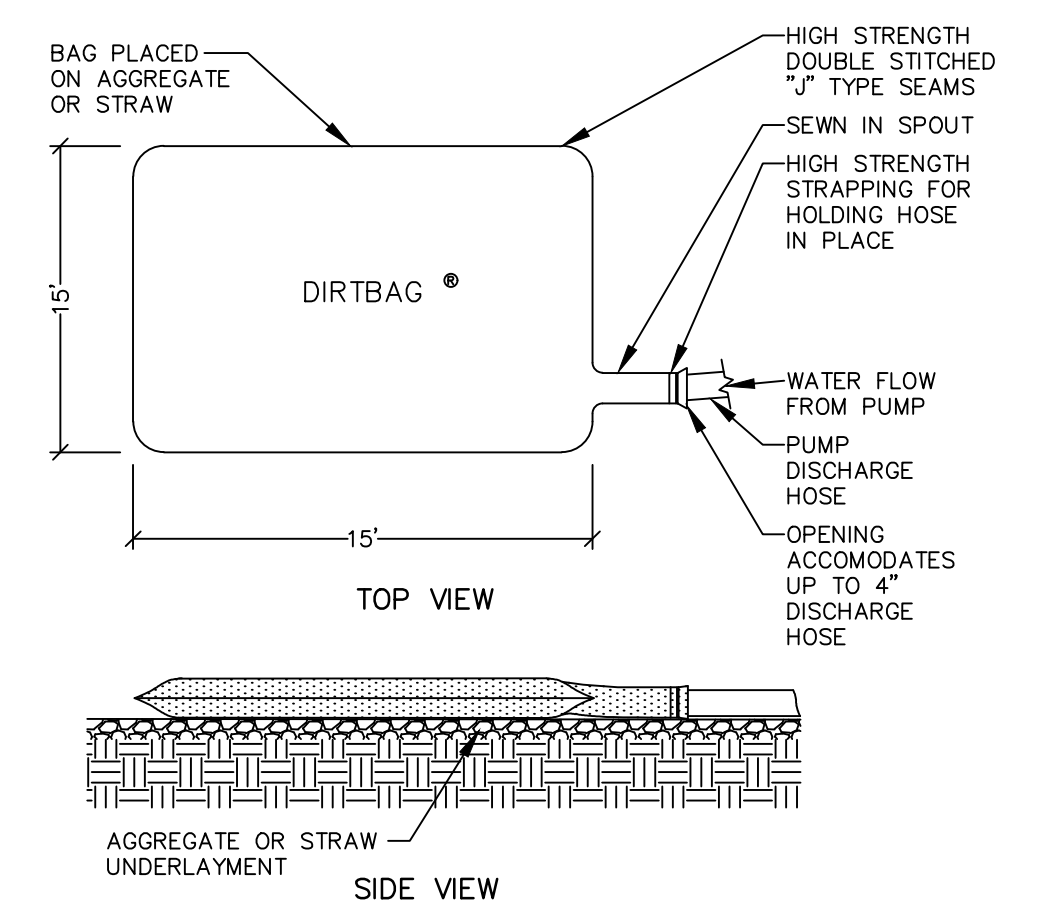
**HANDICAP RAMP**  
NOT TO SCALE



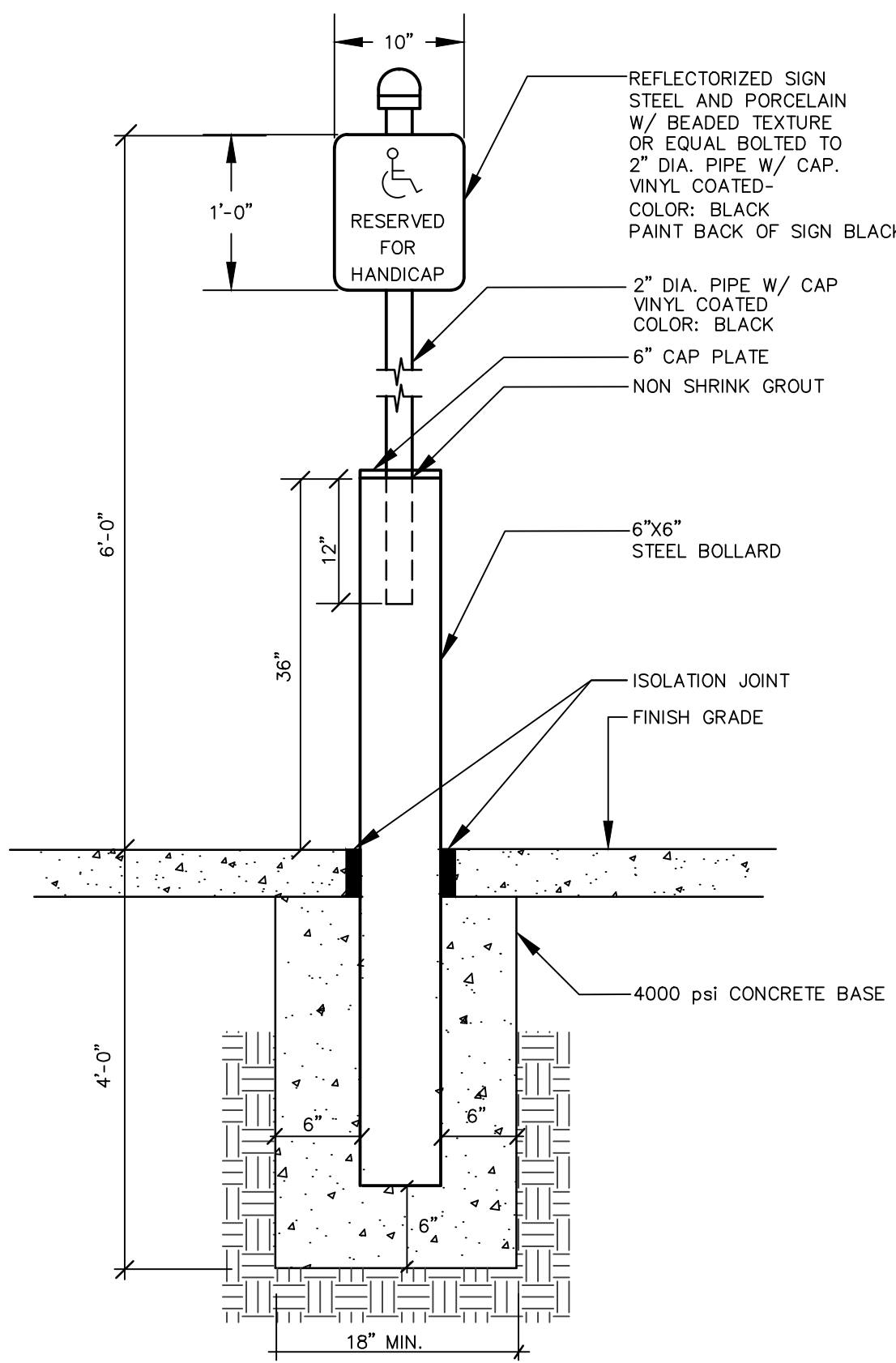
**BITUMINOUS SIDEWALK**  
NOT TO SCALE



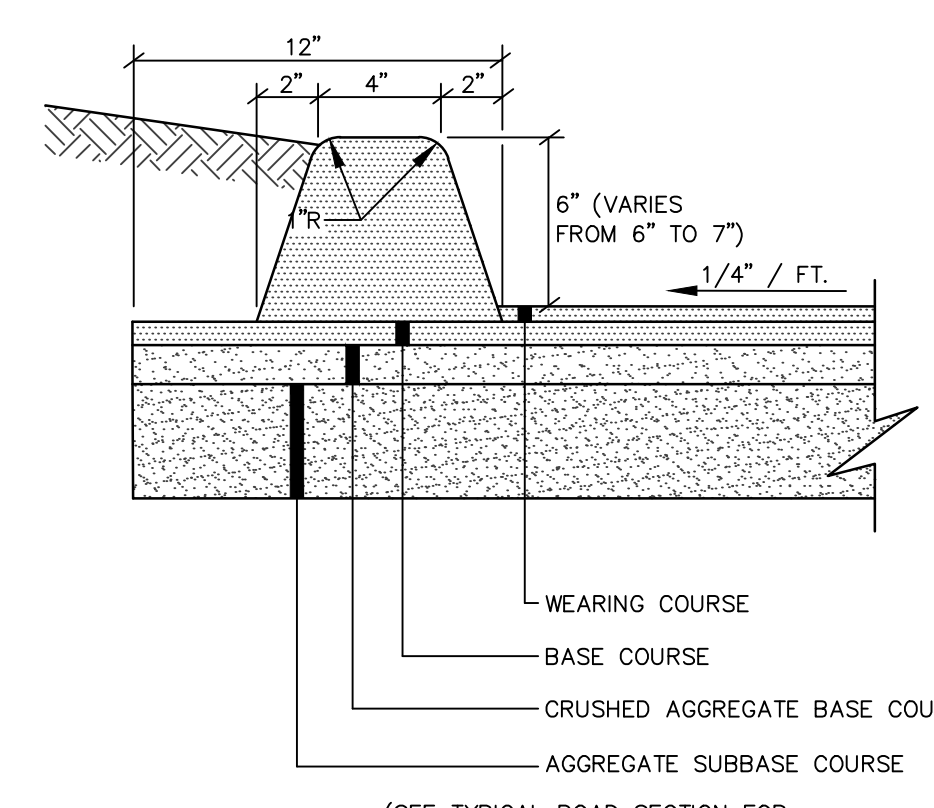
**TYPICAL PAVEMENT JOINT**  
NOT TO SCALE



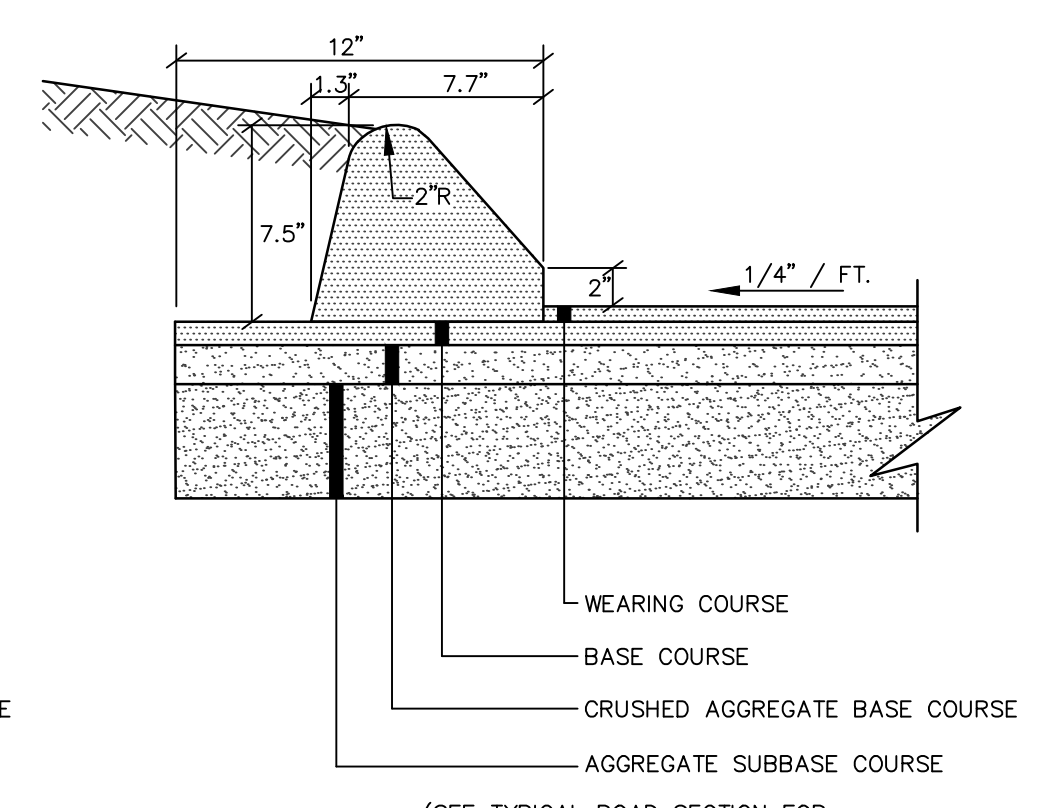
**DIRTBAG PUMPED SILT CONTROL SYSTEM**  
NOT TO SCALE



**STEEL BOLLARD MOUNTED SIGN**  
NOT TO SCALE



**MOLD 1**



**MOLD 2**

**BITUMINOUS CURB SECTION**  
NOT TO SCALE

DESIGNED	CHECKED
JRS	JRS

A. JRS 09-18-18 LEVEL III SITE PLAN SUBMISSION TO THE CITY  
 REV. BY: DATE: STATUS:  
 THIS PLAN SHALL NOT BE MODIFIED WITHOUT WRITTEN PERMISSION FROM SEBAGO TECHNICS, INC. ANY ALTERATIONS AUTHORIZED OR OTHERWISE, SHALL BE AT THE USER'S SOLE RISK AND WITHOUT LIABILITY TO SEBAGO TECHNICS, INC.

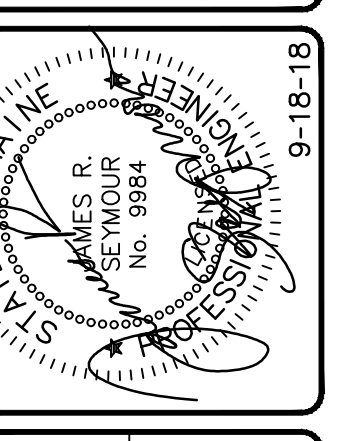
**SEBAGO TECHNICS**  
 WWW.SEBAGOTECHNICS.COM  
 75 John Roberts Rd.  
 Suite 404  
 South Portland, ME 04106  
 Tel. 207-200-2100

DETAILS OF: **PATAGON STORAGE**  
 150 RIVERSIDE ST  
 PORTLAND, MAINE  
 FOR: **PATAGON STORAGE, LLC**  
 1700 MAIN STREET, SUITE 70  
 WASHAUGAL, WASHINGTON

PROJECT NO.	SCALE
17500	N.T.S.

SHEET 7 OF 8

JAMES R. SEYMOUR PE 9984



17500.dwg, 148.02