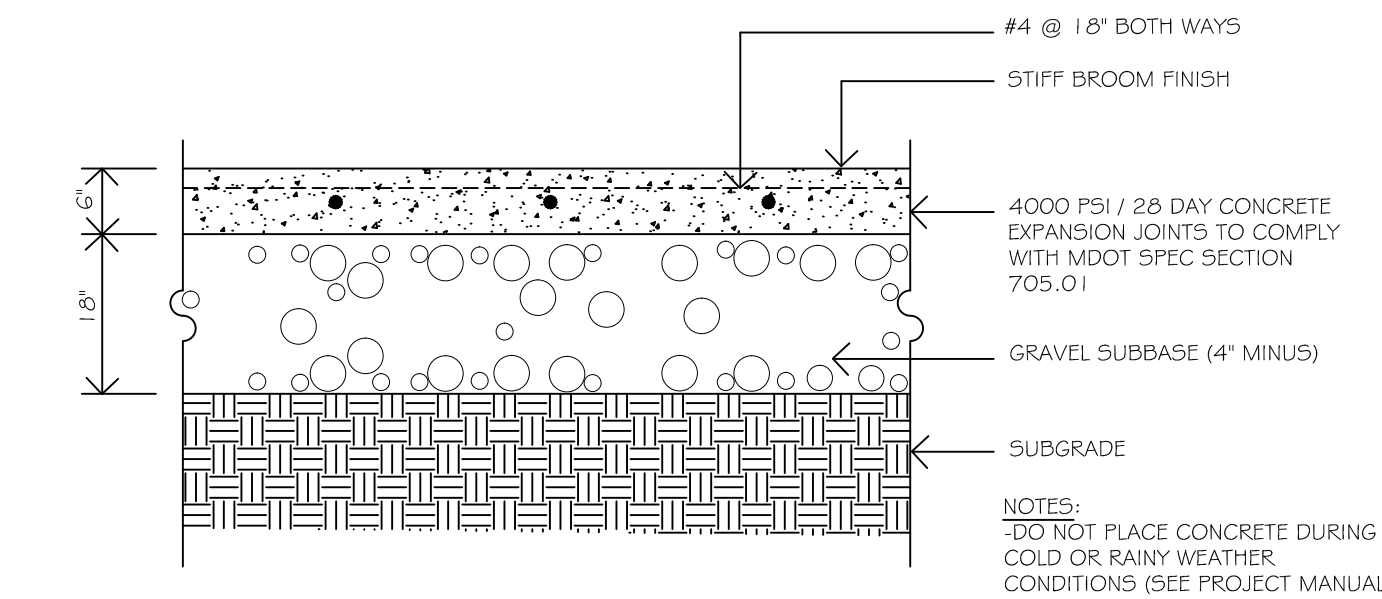
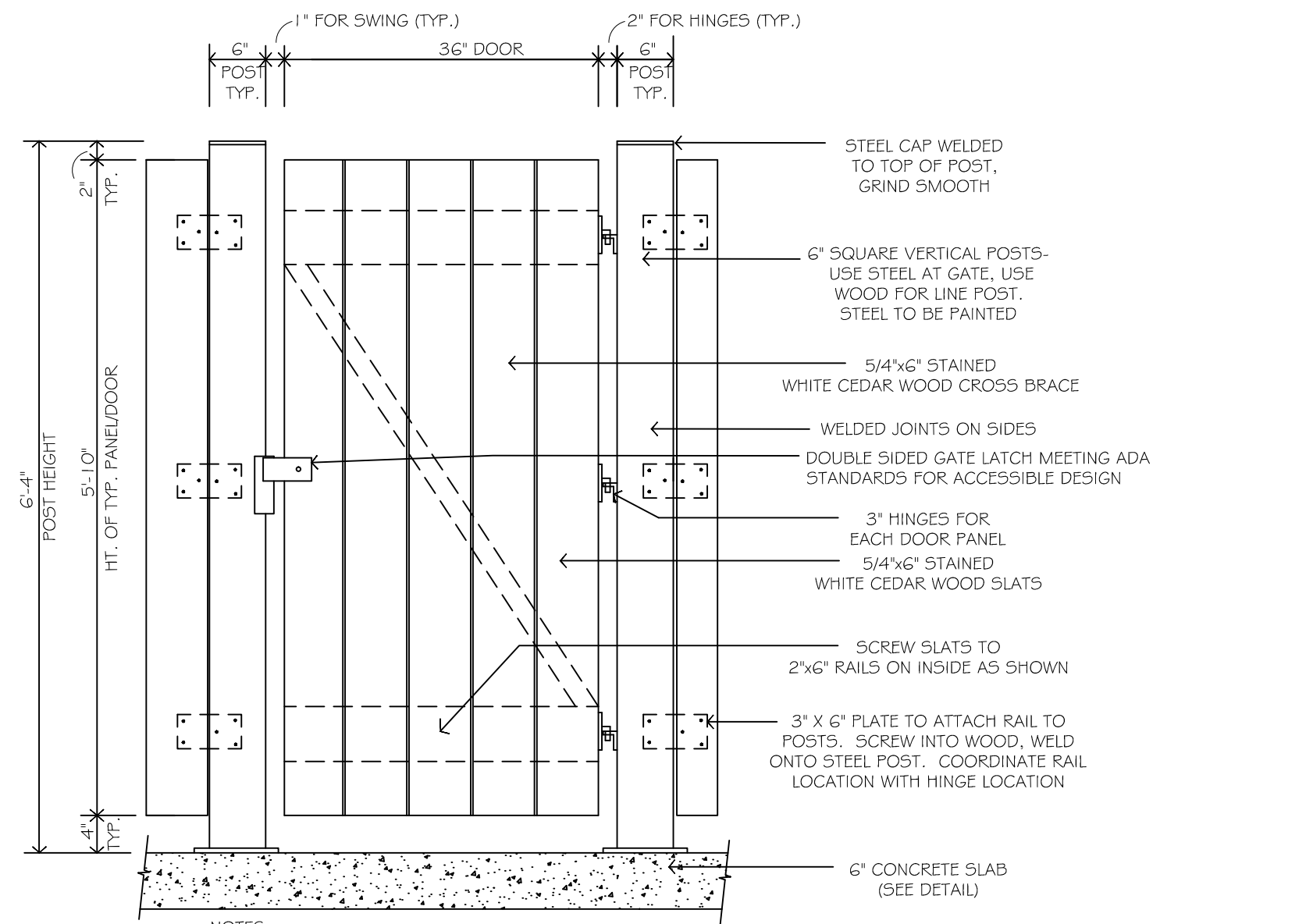


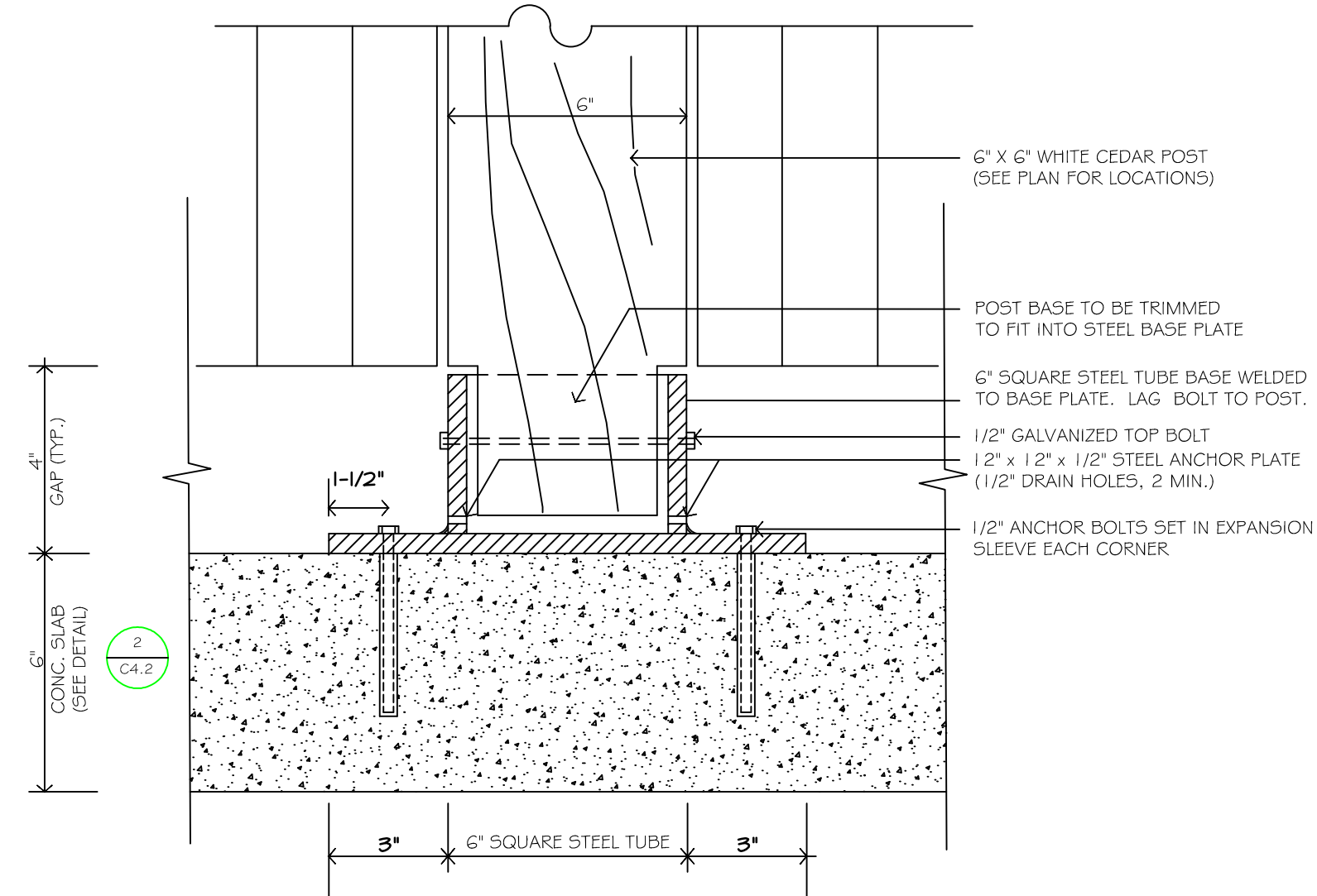
1 DUMPSTER ENCLOSURE: FRONT AND SIDE ELEVATIONS
C4.2 NOT TO SCALE



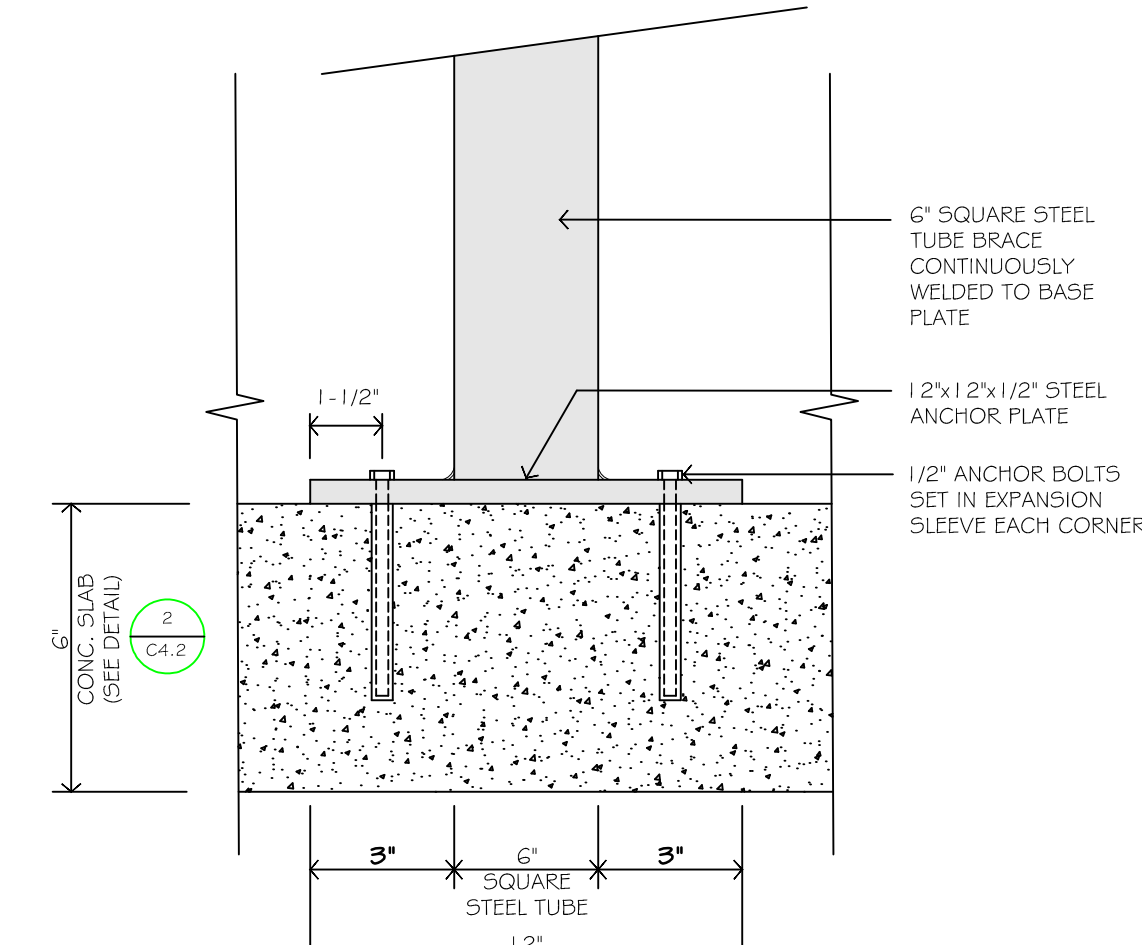
2 CONCRETE PAD AT DUMPSTER PAD
C4.2 NOT TO SCALE



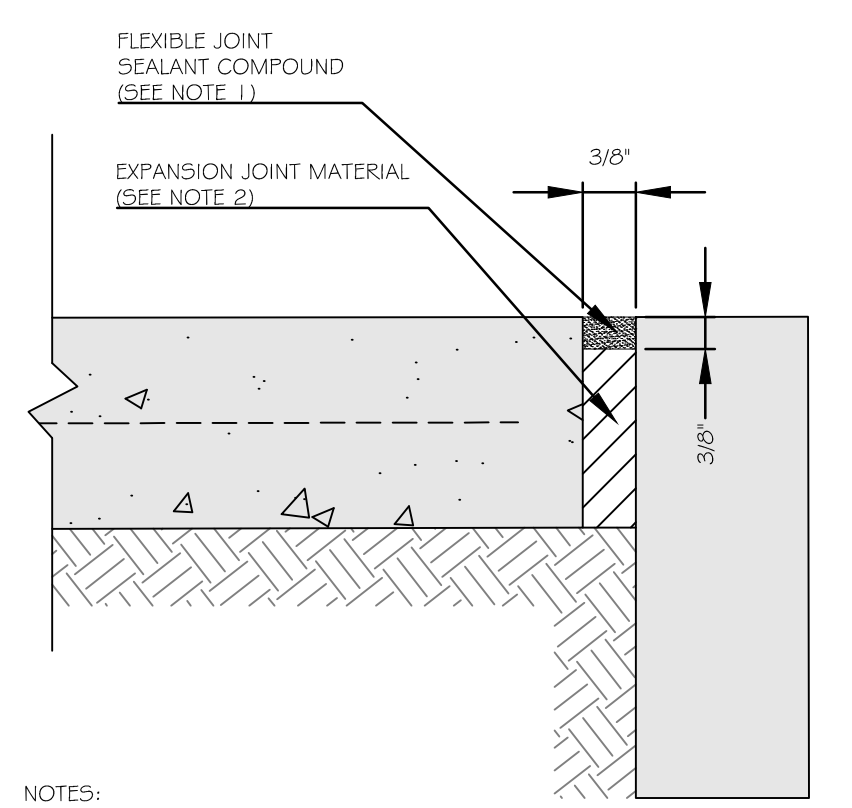
3 DUMPSTER ENCLOSURE MAN-DOOR ELEVATION
C4.2 NOT TO SCALE



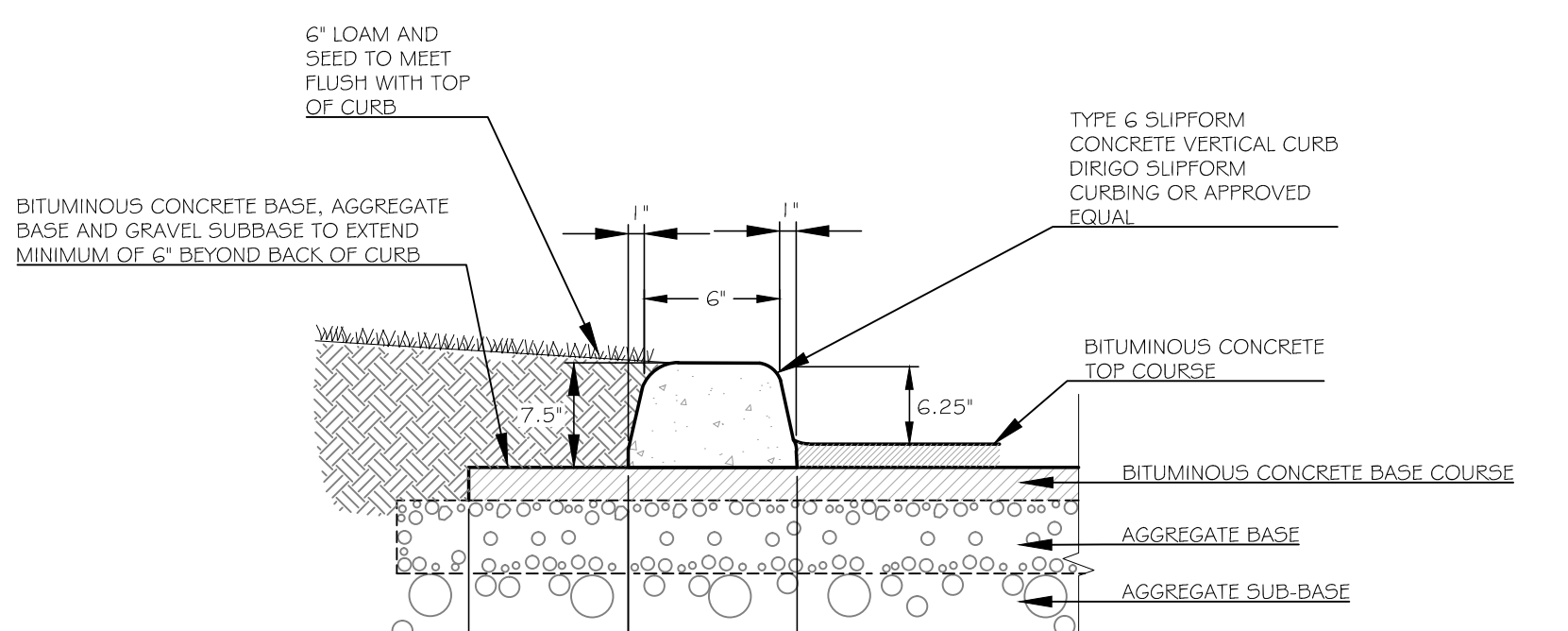
4 BASE PLATE / WOOD POST DETAIL
C4.2 NOT TO SCALE



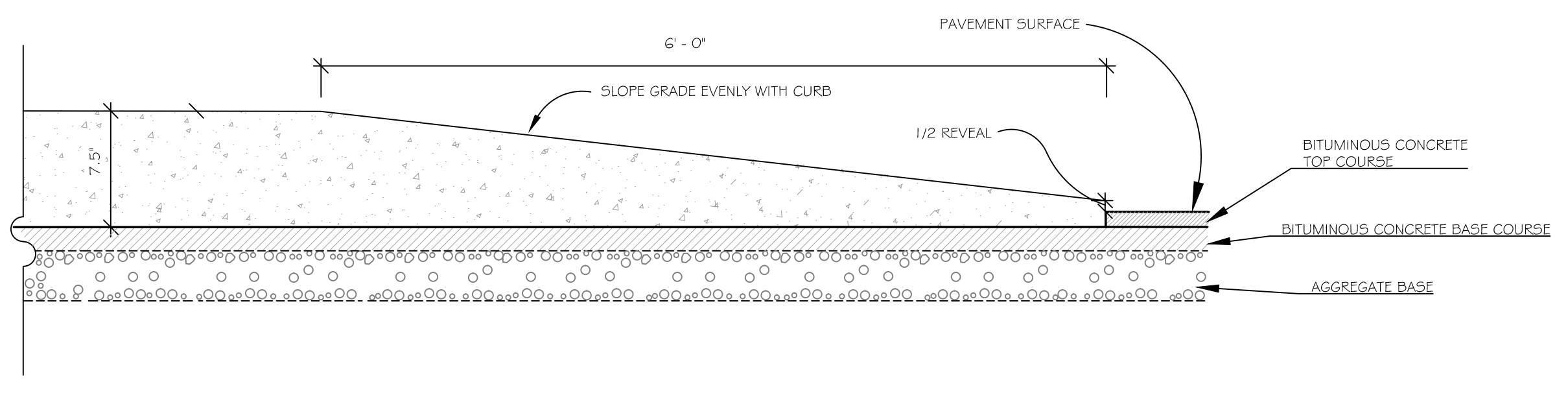
5 BASE PLATE / STEEL POST DETAIL
C4.2 NOT TO SCALE



6 EXPANSION JOINT DETAIL
C4.2 NOT TO SCALE



7 VERTICAL CURB DETAIL (SLIPFORM CONCRETE OR BIT. CONCRETE)
C4.2 NOT TO SCALE



8 CURB TIPDOWN DETAIL (SLIPFORM CONCRETE OR BIT. CONCRETE)
C4.2 NOT TO SCALE

HOTEL REDEVELOPMENT
1210 Brighton Avenue
Portland, Maine
Portland Hotels, Inc.
1200 Brighton Avenue
Portland, Maine 04102

PRELIMINARY PLAN
ISSUED FOR PERMITTING - NOT FOR CONSTRUCTION

Rev.	Date	Description	Drawn	Check
1	11/14/14	Submitted for Prelim. Level III Site Plan Application	SWC	WRW

Sheet Title:
SITE DETAILS

Job No.:	257	Sheet No.:	
Date:	Nov. 14, 2014	Scale:	NTS
Drawn:	SWC	Checked:	WRW

C4.2