

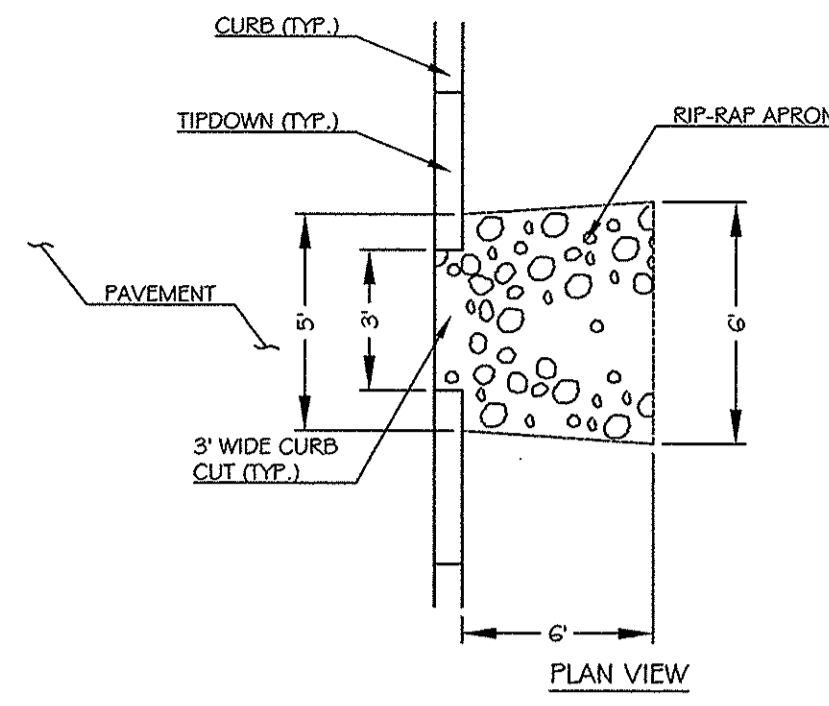
NOTES:

1. USE  $D_{50}$  NOTED ON TABLE UNLESS OTHERWISE SPECIFIED ON PLANS.
2. UNDERLAY RIP-RAP WITH 6" OF GRAVEL OR GEOTEXTILE
3. USE WIDTHS NOTED ABOVE OR CONFORM TO NATURAL CHANNEL OR TOPOGRAPHY.

D	L	W	$D_{50}$
6"	2.25'	2'	6"
12"	4.5'	4'	8"
15"	5.63'	5'	8"
18"	6.75'	6'	8"

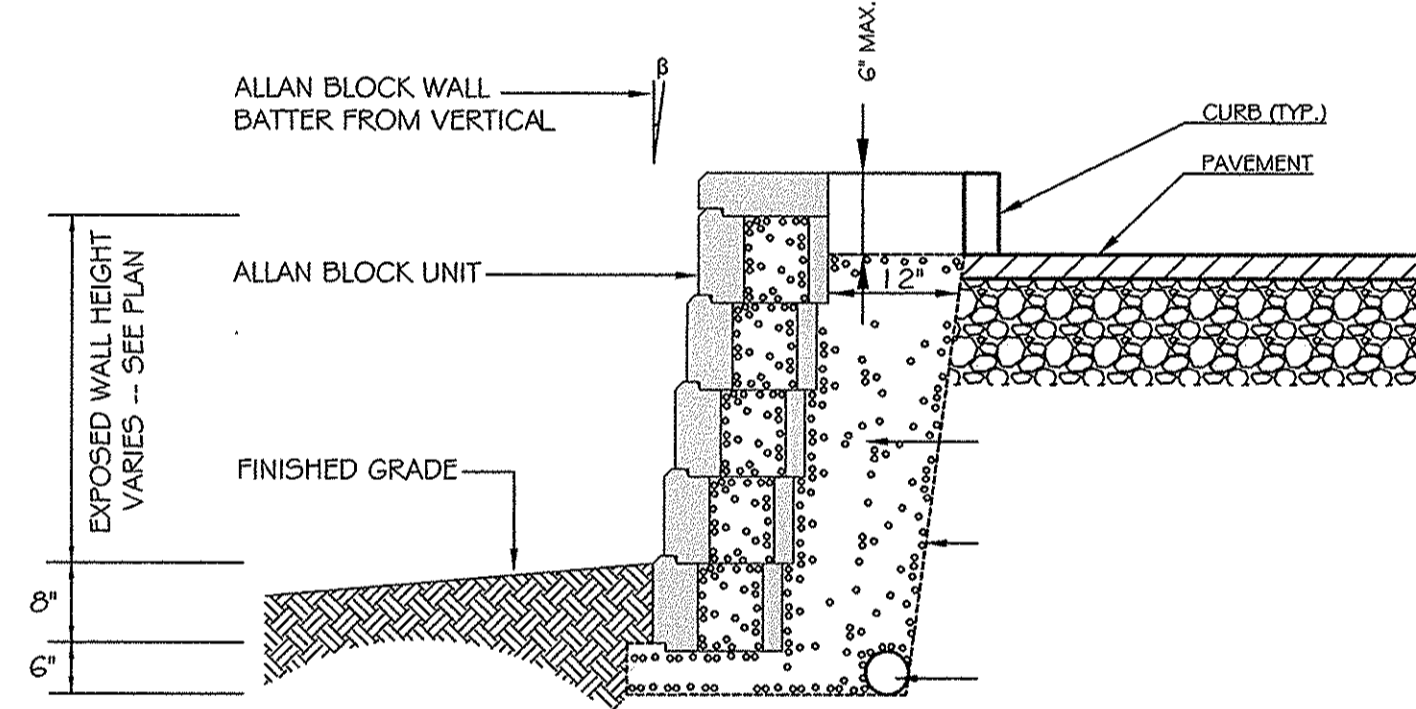
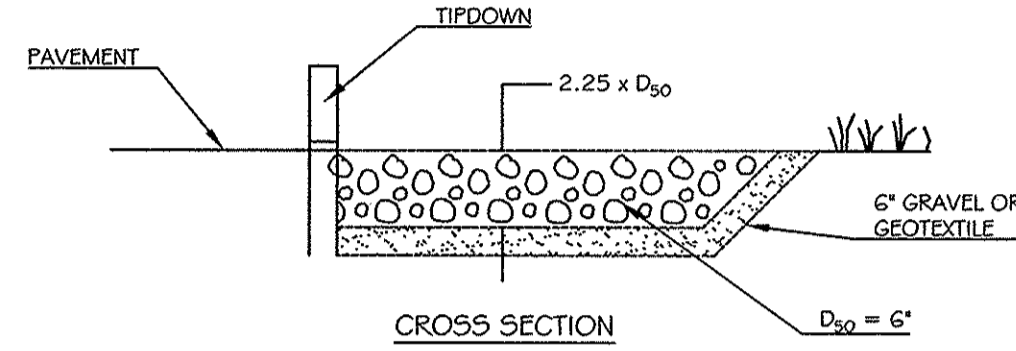
1 RIP-RAP APRON (PIPE OUTLET)

NOT TO SCALE



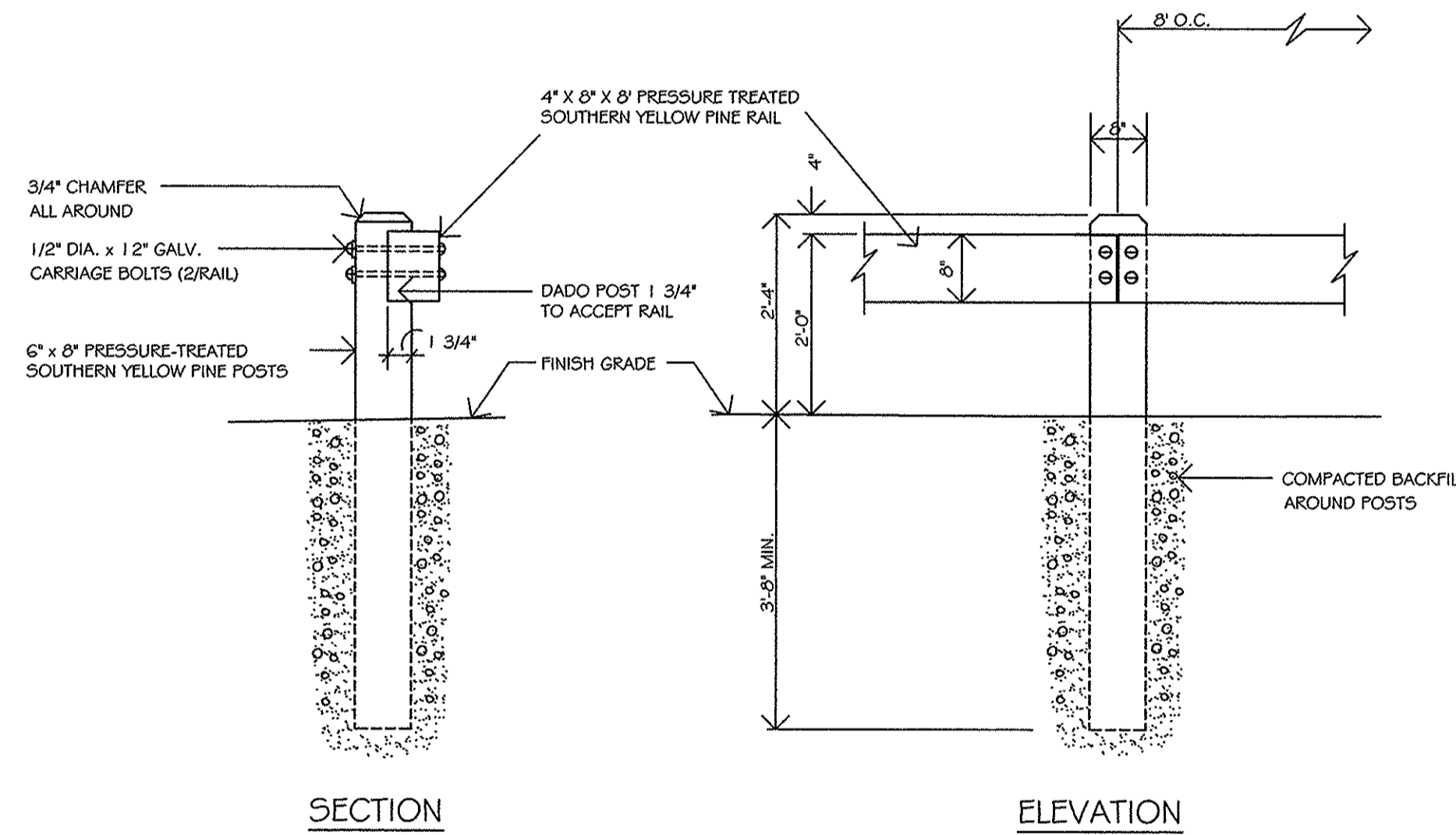
2 RIP-RAP APRON (CURB CUT)

NOT TO SCALE



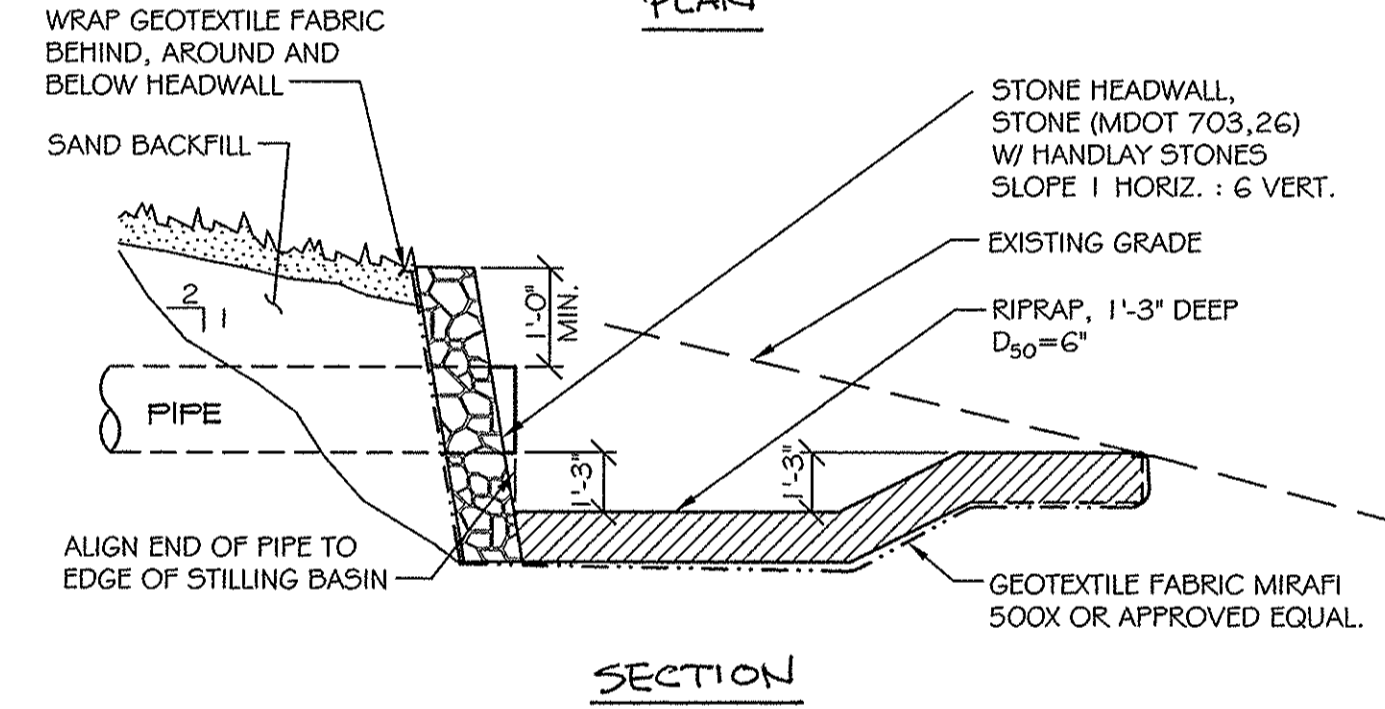
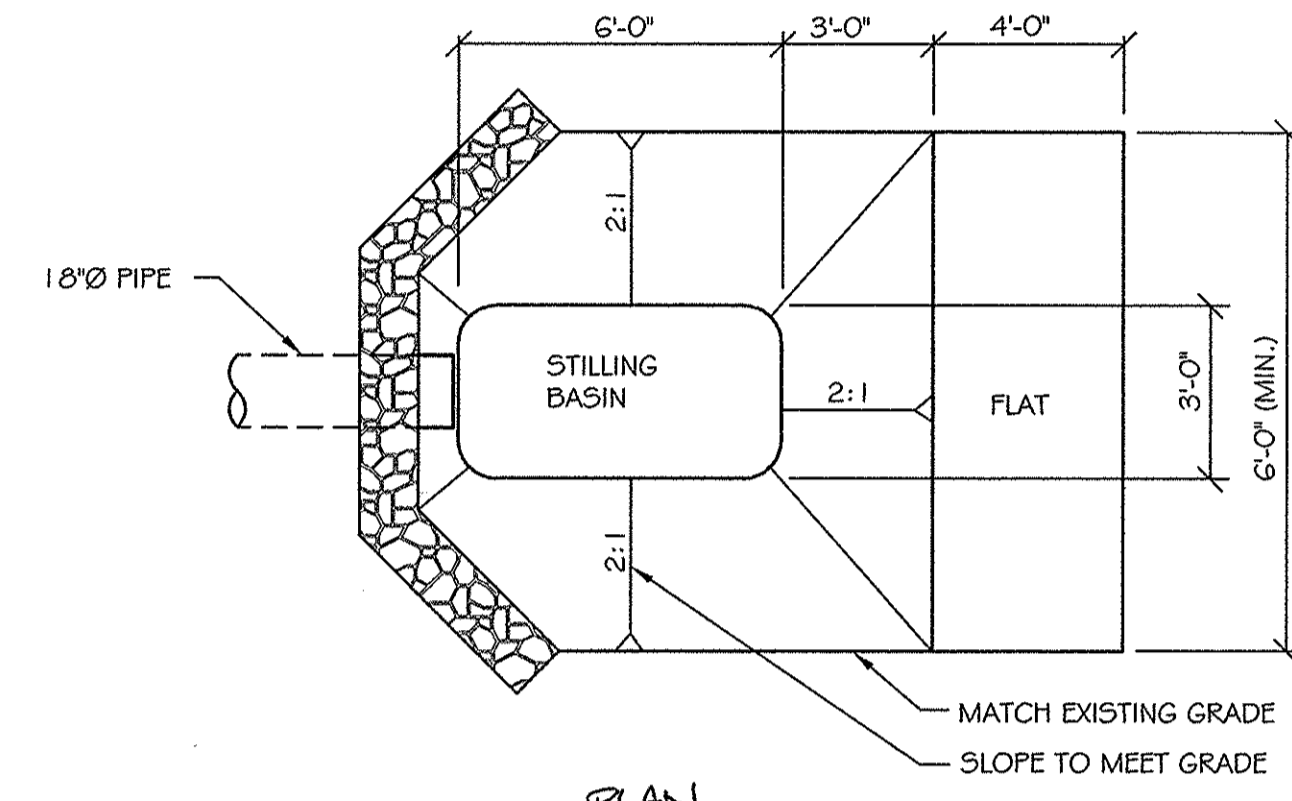
3 ALLAN BLOCK RETAINING WALL

NOT TO SCALE



4 WOODEN GUARD RAIL SECTION

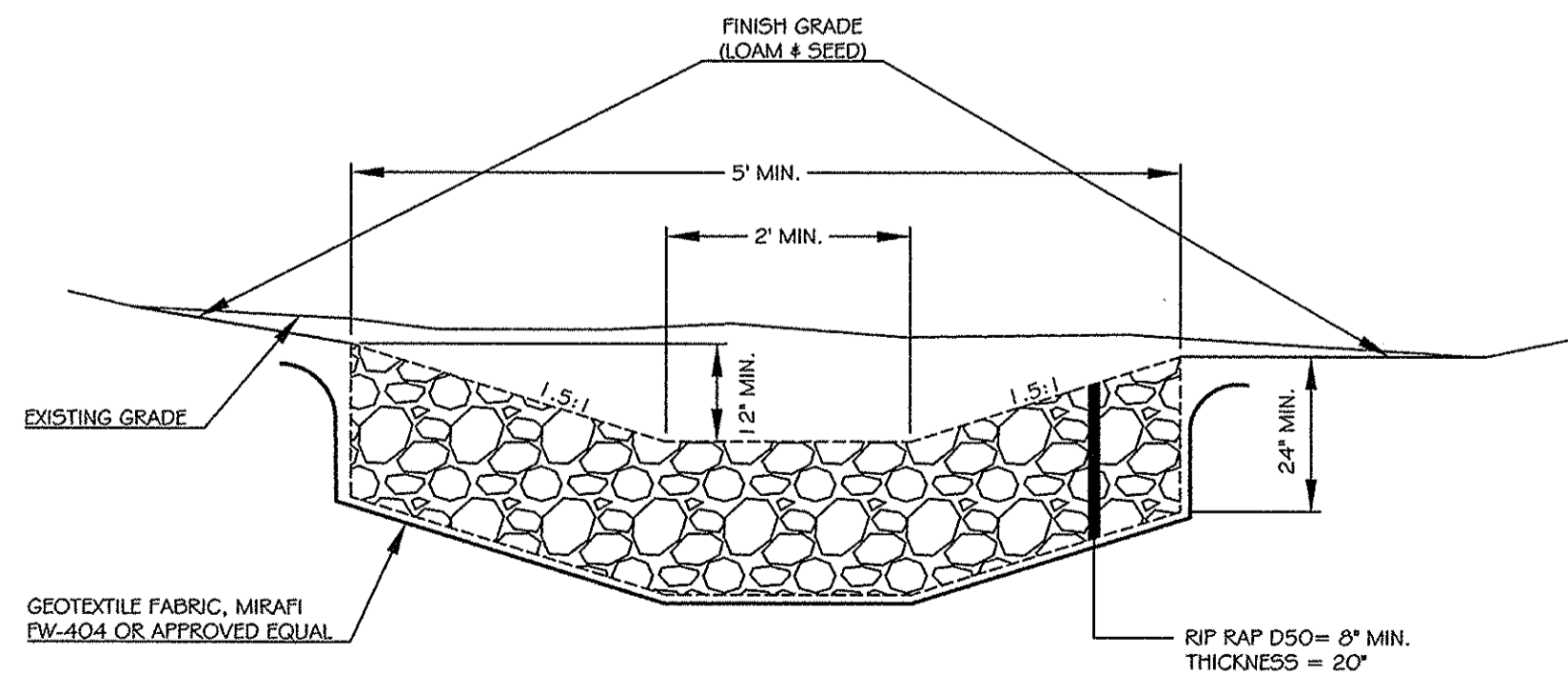
NOT TO SCALE



- NOTES:
1. INSTALL SILT FENCE DOWNSTREAM PRIOR TO EXCAVATION.
  2. LOAM & SEED ALL AREAS DISTURBED BY CONSTRUCTION OF PLUNGE POOL.

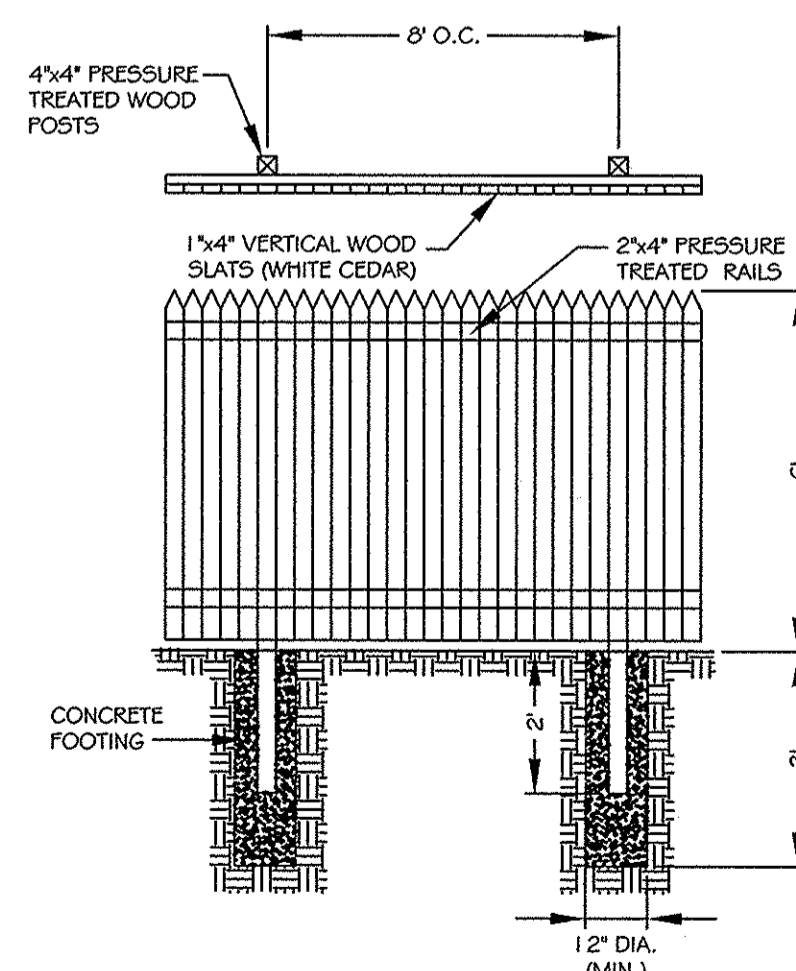
5 RIP-RAP PLUNGE POOL DETAIL

NOT TO SCALE



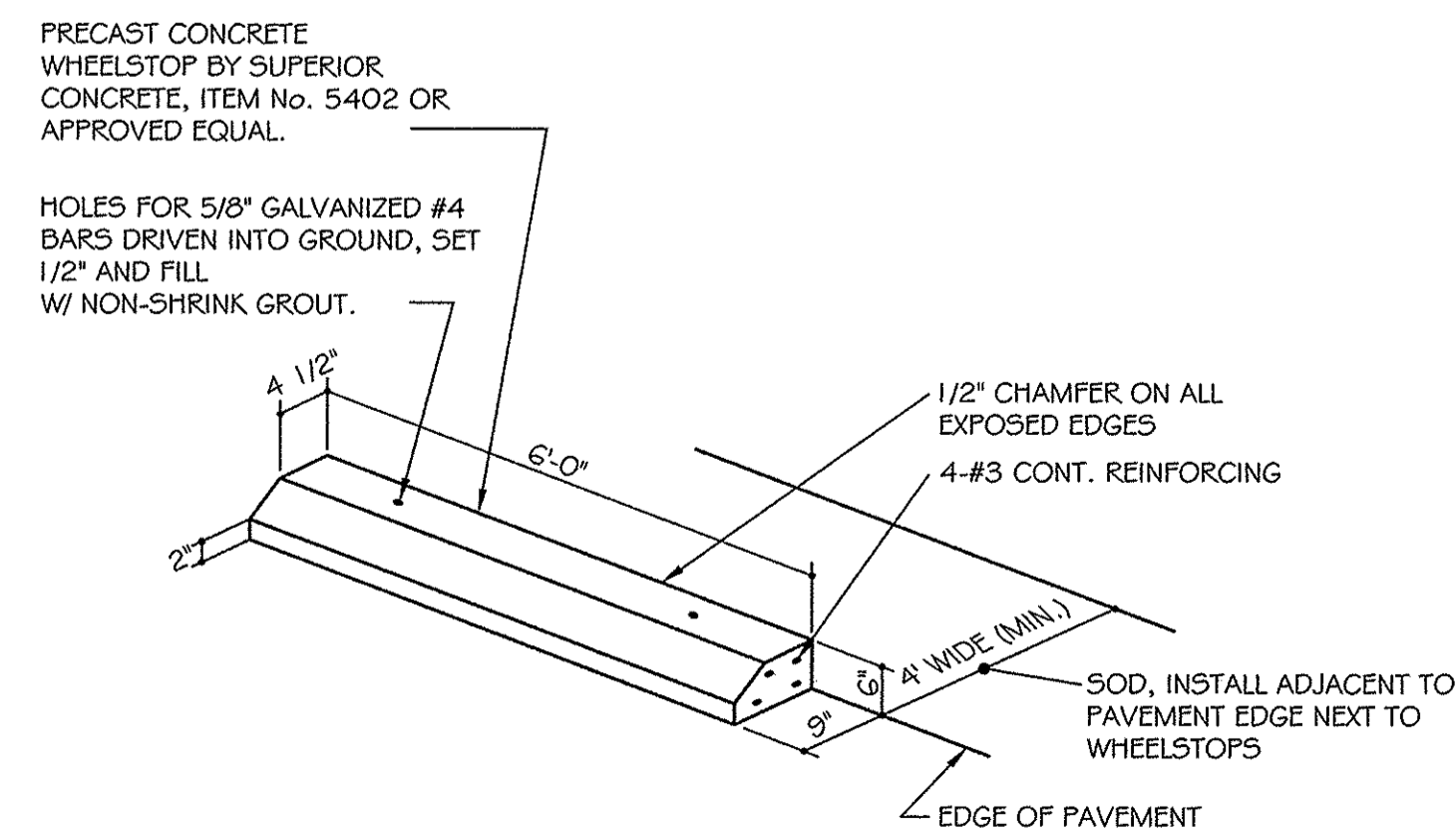
6 RIPRAP SWALE DETAIL

NOT TO SCALE



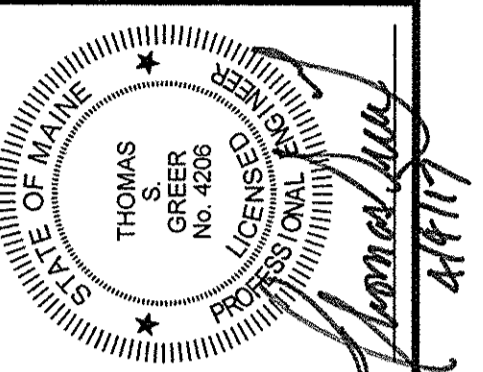
7 WOOD FENCE DETAIL

NOT TO SCALE



8 CONCRETE WHEELSTOP DETAIL

NOT TO SCALE



REV.	DATE	DESCRIPTION

PORTLAND HOTELS, INC.  
1200 BRIGHTON AVENUE  
PORTLAND, MAINE

HOTEL REDEVELOPMENT  
1210 BRIGHTON AVENUE  
PORTLAND, MAINE

SCALE: AS SHOWN  
DATE: APRIL 4, 2017  
PROJECT: 16196

DRN BY: JDC  
DESIGN BY: TSG  
CHK BY: TSG

SITE DETAILS

C7.6