

HOTEL REDEVELOPMENT

1210 BRIGHTON AVENUE PORTLAND, MAINE

OWNER / APPLICANT: PORTLAND HOTELS, INC.
1200 BRIGHTON AVENUE
PORTLAND, MAINE

ARCHITECT

ARCHETYPE ARCHITECTS
48 UNION WHARF
PORTLAND, MAINE

CIVIL ENGINEER

PINKHAM & GREER
CIVIL ENGINEERS
28 VANNAH AVENUE
PORTLAND, MAINE

UTILITIES

SEWER

CITY OF WESTBROOK
CITY ENGINEER
2 YORK STREET
WESTBROOK, MAINE 04092
1-207-854-0638

WATER

PORTLAND WATER DISTRICT
225 DOUGLASS STREET
PO. BOX 3553
PORTLAND, MAINE 04102
1-207-774-5961 x3199

ELECTRIC

CENTRAL MAINE POWER CO.
162 CANCO ROAD
PORTLAND, MAINE 04103
1-800-750-4000

SURVEYOR

OWEN HASKELL, INC.
390 U.S. ROUTE ONE
FALMOUTH, MAINE

LANDSCAPE ARCHITECT

ANTHONY MUENCH,
LANDSCAPE ARCHITECT
94 COMMERCIAL STREET
FALMOUTH, MAINE

TELEPHONE

FAIRPOINT
4 5 FOREST AVENUE
PORTLAND, MAINE 04101
1-800-240-5019

CABLE

TIME WARNER CABLE / SPECTRUM
118 JOHNSON ROAD
PORTLAND, MAINE 04101
1-800-892-2253

NATURAL GAS

UNITIL
1075 FOREST AVENUE
PORTLAND, MAINE 04103-3586
1-207-541-2543

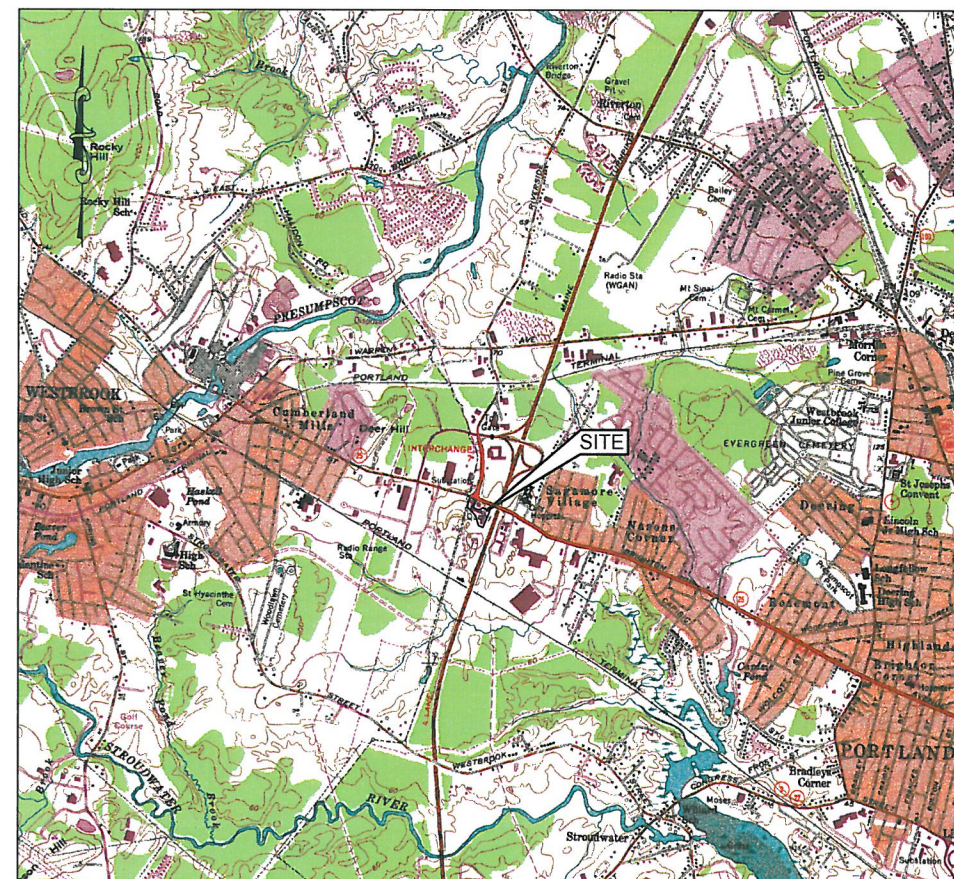
DRAWING LIST

CO	COVER SHEET
1	BOUNDARY & TOPOGRAPHIC SURVEY
C1.1	EXISTING CONDITIONS AND DEMOLITION PLAN
C2.1	SITE PLAN AND GENERAL NOTES
C2.2	EASEMENTS AND BUILDING SETBACKS PLAN
C3.1	GRADING AND UTILITY PLAN
C3.2	GRADING DETAIL PLAN
C4.1	EROSION CONTROL PLAN
C4.2	EROSION AND SEDIMENT CONTROL NOTES
C5.1	LANDSCAPE PLAN AND NOTES
C6.1	SITE LIGHTING LAYOUT
C7.1	SITE DETAILS
C7.2	SITE DETAILS
C7.3	SITE DETAILS
C7.4	SITE DETAILS
C7.5	SITE DETAILS
C7.6	SITE DETAILS

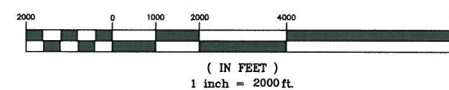
PERMITS

CITY OF PORTLAND
LEVEL III SITE PLAN APPROVAL PLANNING DEPARTMENT
REVISED SITE PLAN SUBMISSION, SUBMITTED APRIL 4, 2017

MAINE DEPARTMENT OF ENVIRONMENTAL PROTECTION
MAINE CONSTRUCTION GENERA PERMIT
TO BE SUBMITTED AT LEAST 14 DAYS PRIOR TO
CONSTRUCTION.



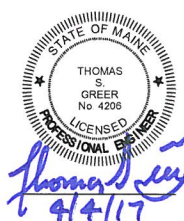
GRAPHIC SCALE



SITE PLAN, APPROVED BY THE
CITY OF PORTLAND PLANNING BOARD

CHAIRMAN

DATE



HOTEL REDEVELOPMENT
1210 BRIGHTON AVENUE, PORTLAND

TAX MAP 265, BLOCK A, LOT 1 & 9

SUBMITTED FOR REVISED FINAL
SITE PLAN APPROVAL 4/4/17