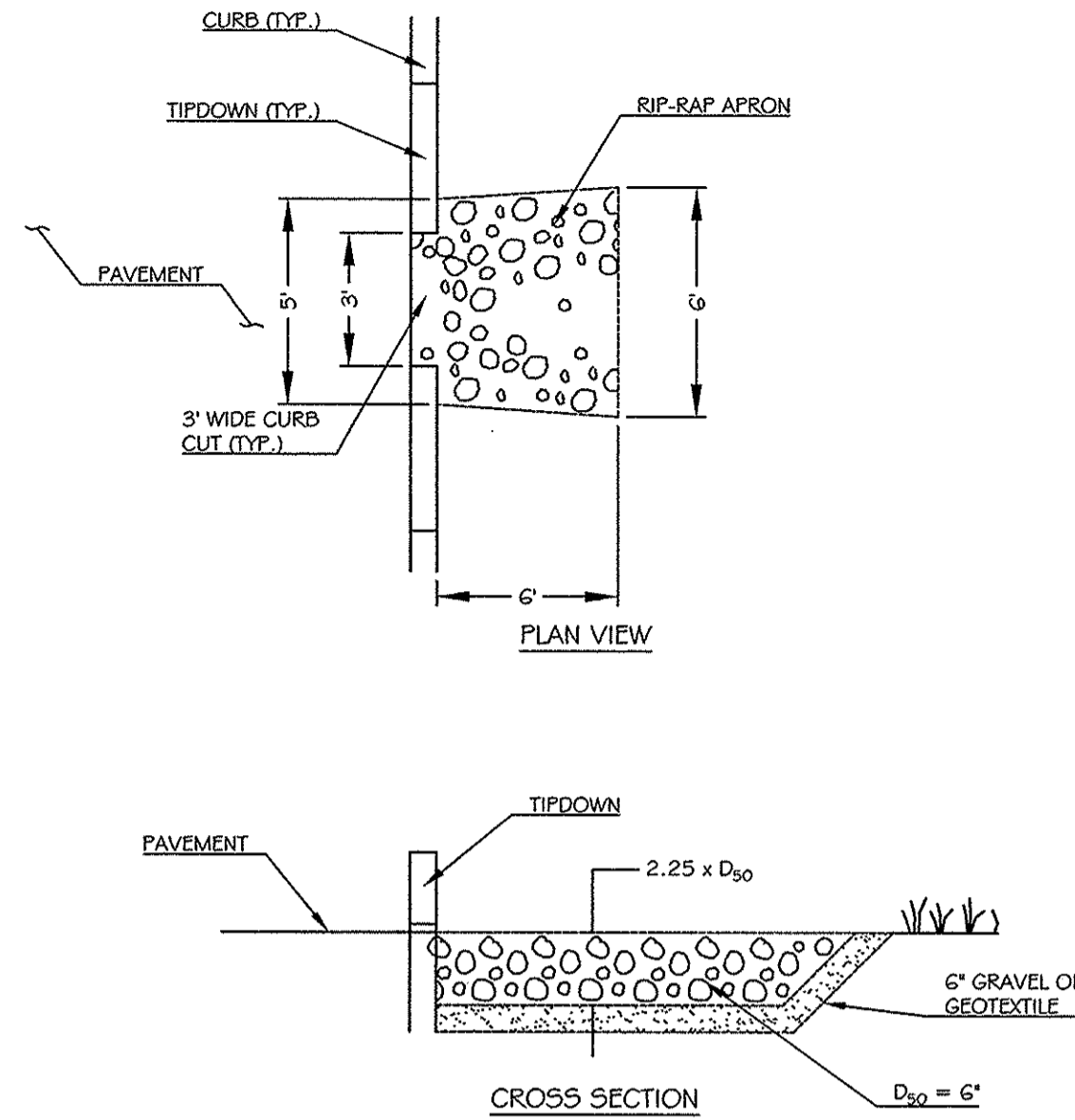


NOTES:

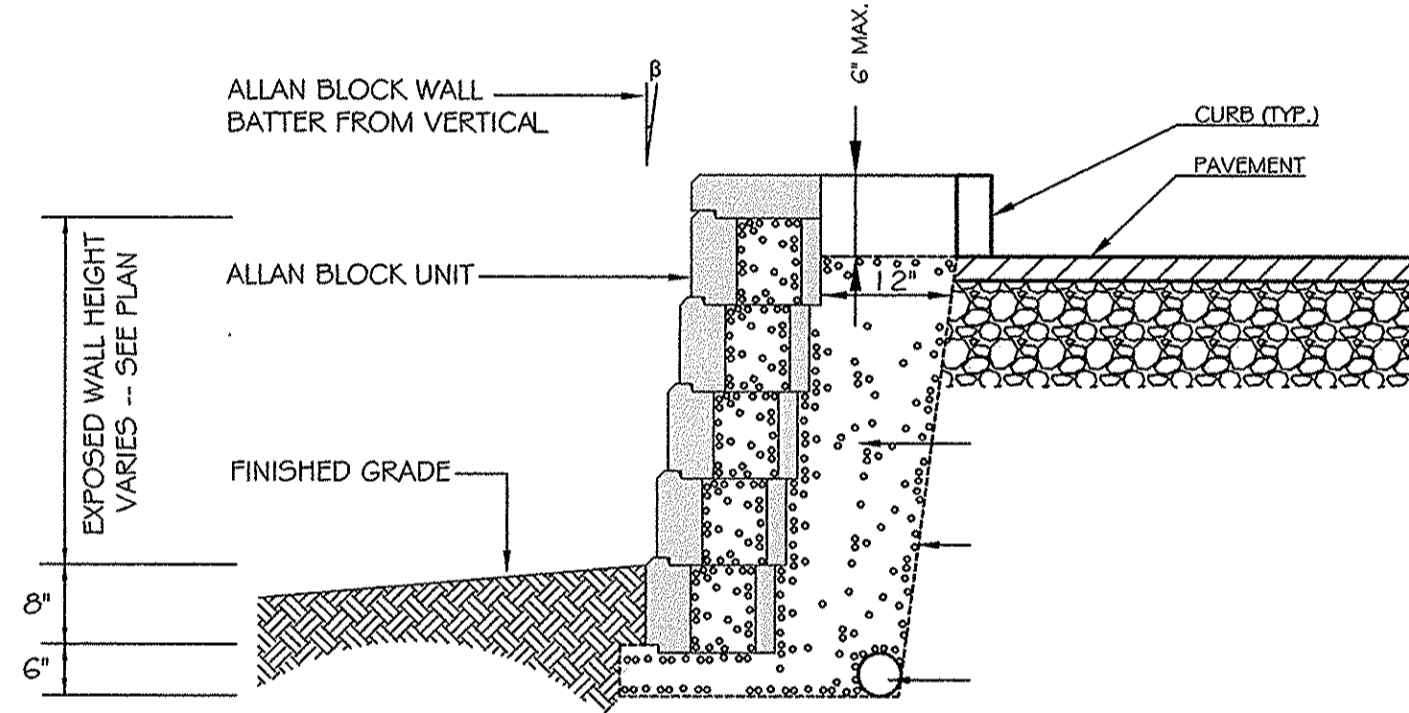
1. USE D_{50} NOTED ON TABLE UNLESS OTHERWISE SPECIFIED ON PLANS.
2. UNDERLAY RIP-RAP WITH 6" OF GRAVEL OR GEOTEXTILE
3. USE WIDTHS NOTED ABOVE OR CONFORM TO NATURAL CHANNEL OR TOPOGRAPHY.

D	L	W	D_{50}
6"	2.25'	2'	6"
12"	4.5'	4'	8"
15"	5.63'	5'	8"
18"	6.75'	6'	8"

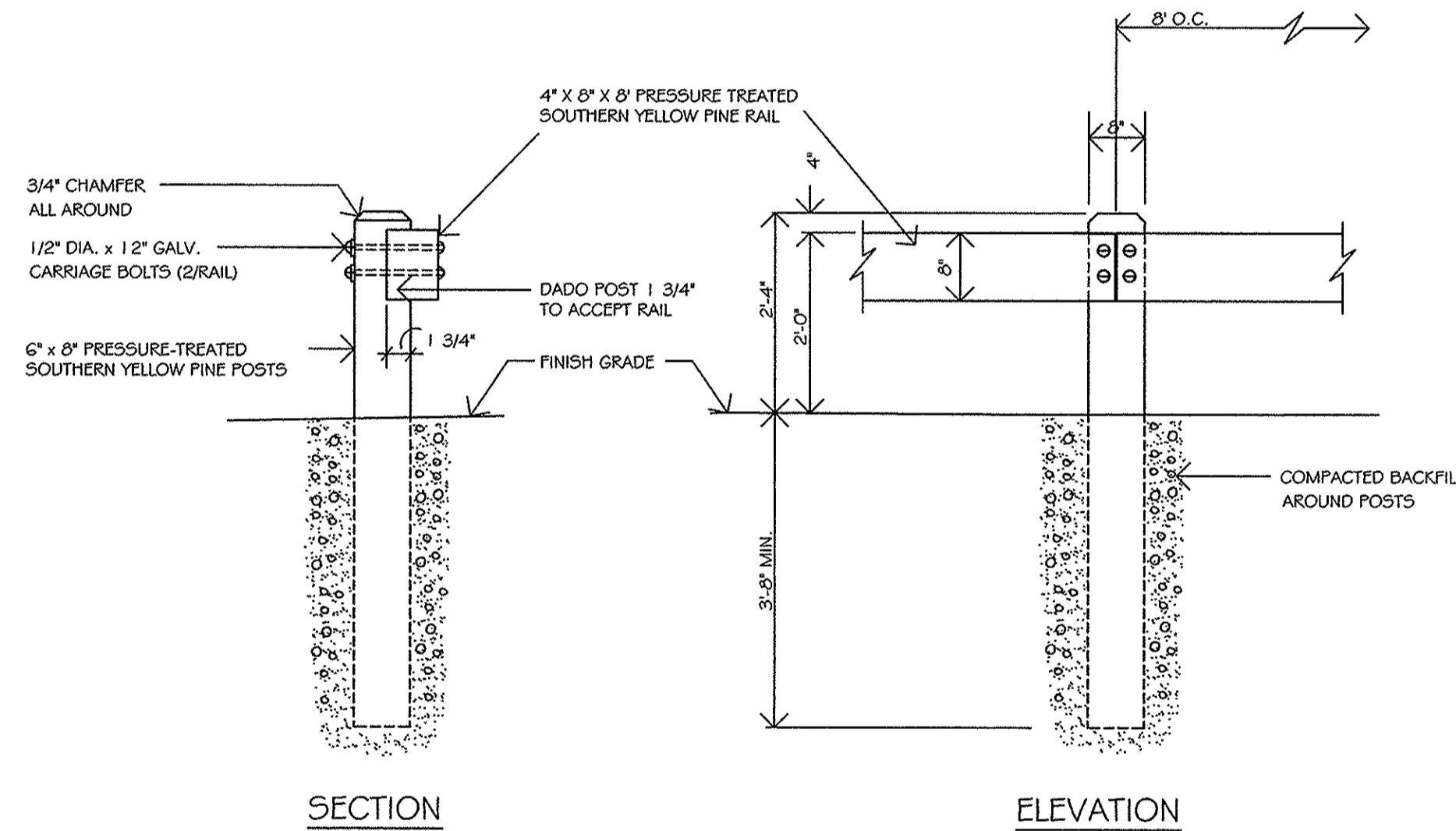
1 RIP-RAP APRON (PIPE OUTLET)
NOT TO SCALE



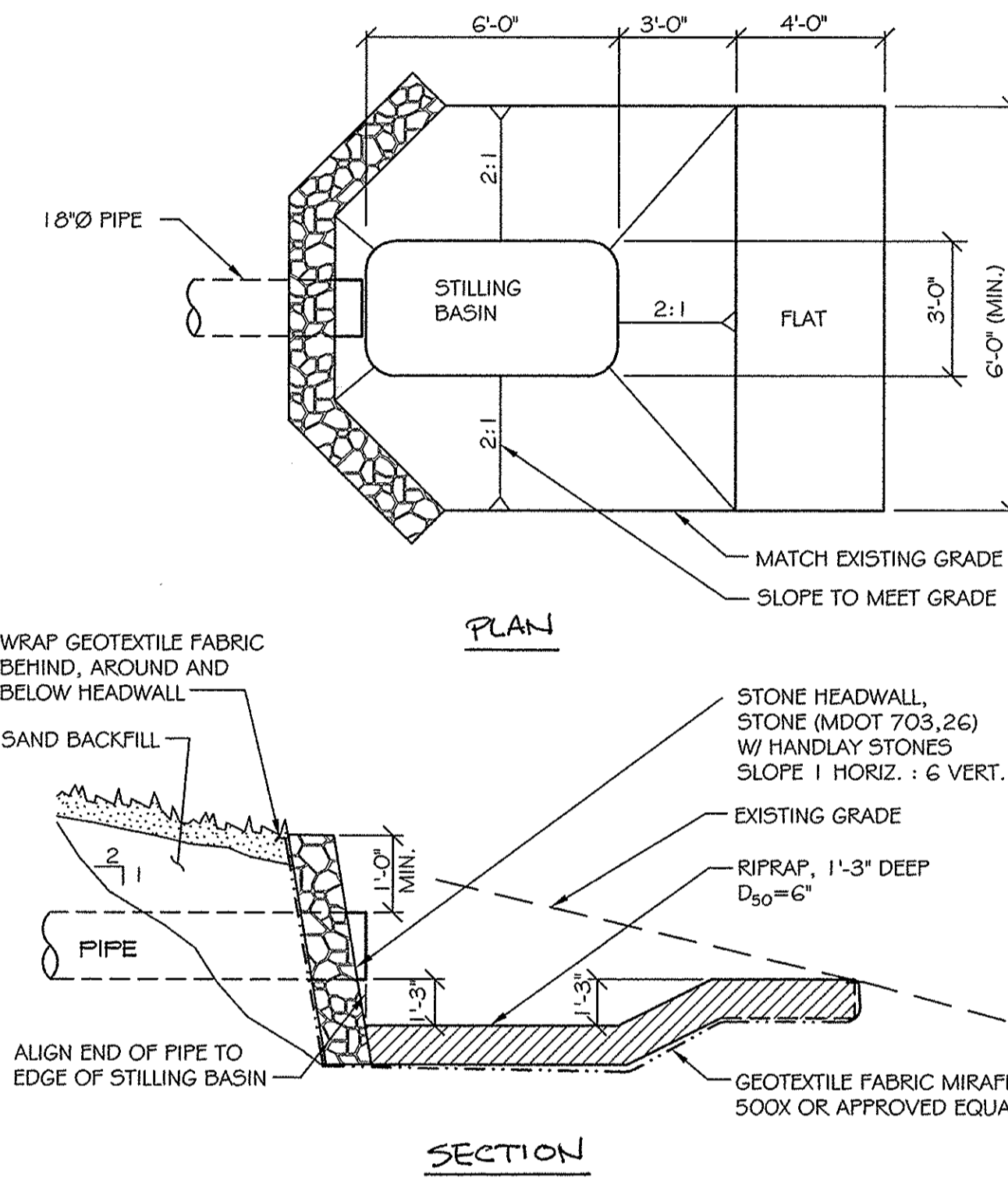
2 RIP-RAP APRON (CURB CUT)
NOT TO SCALE



3 ALLAN BLOCK RETAINING WALL
NOT TO SCALE

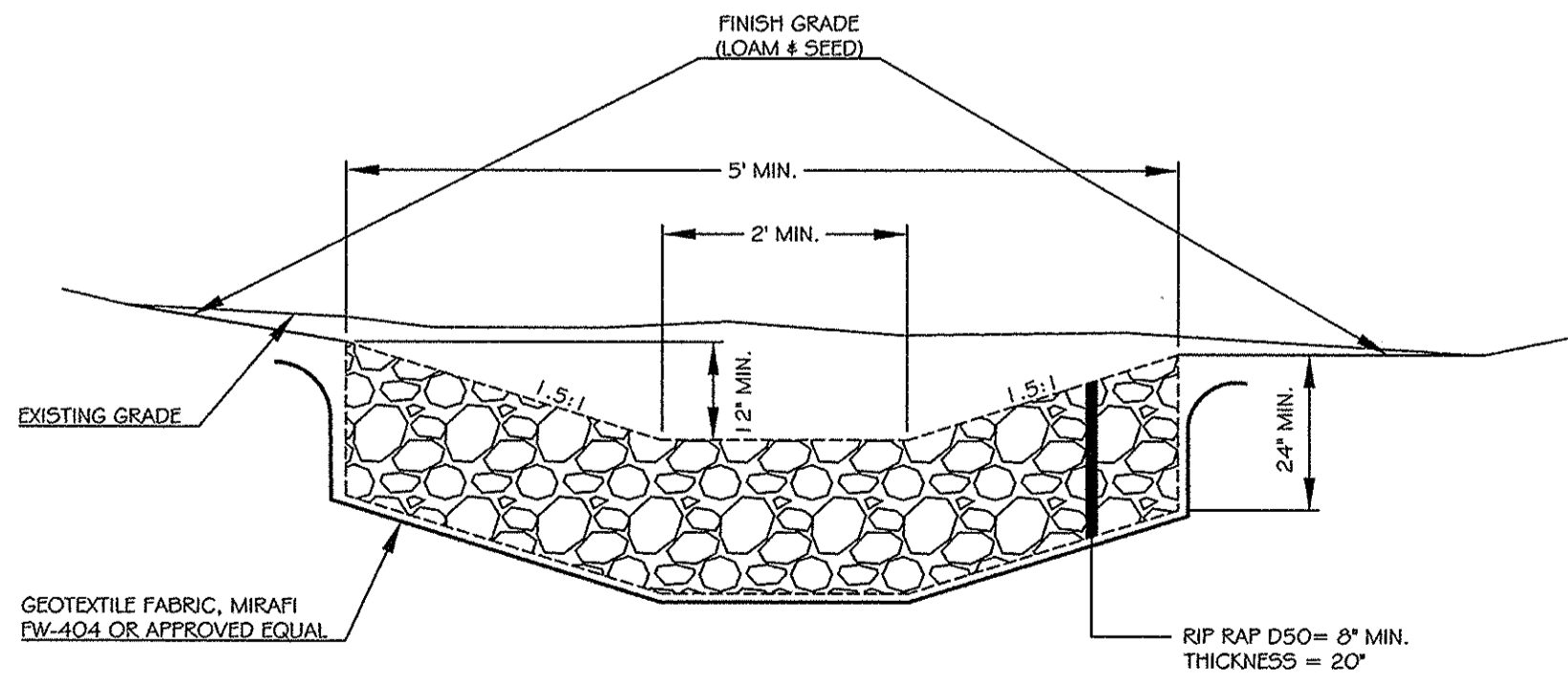


4 WOODEN GUARD RAIL SECTION
NOT TO SCALE

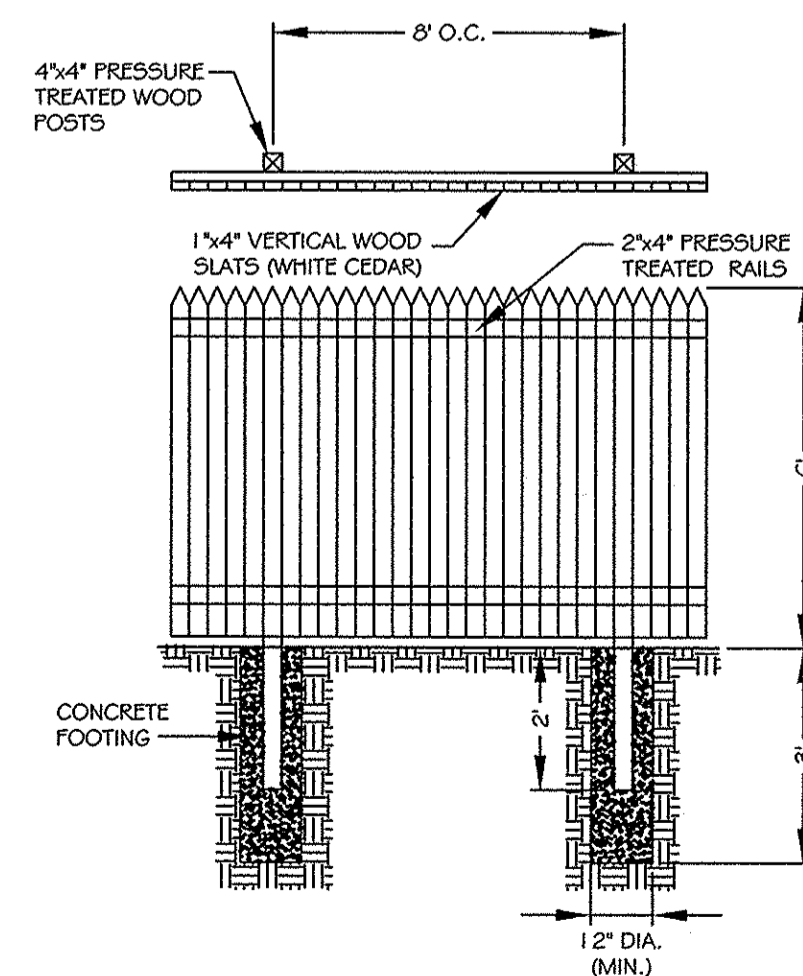


- NOTES:
1. INSTALL SILT FENCE DOWNSTREAM PRIOR TO EXCAVATION.
 2. LOAM & SEED ALL AREAS DISTURBED BY CONSTRUCTION OF PLUNGE POOL.

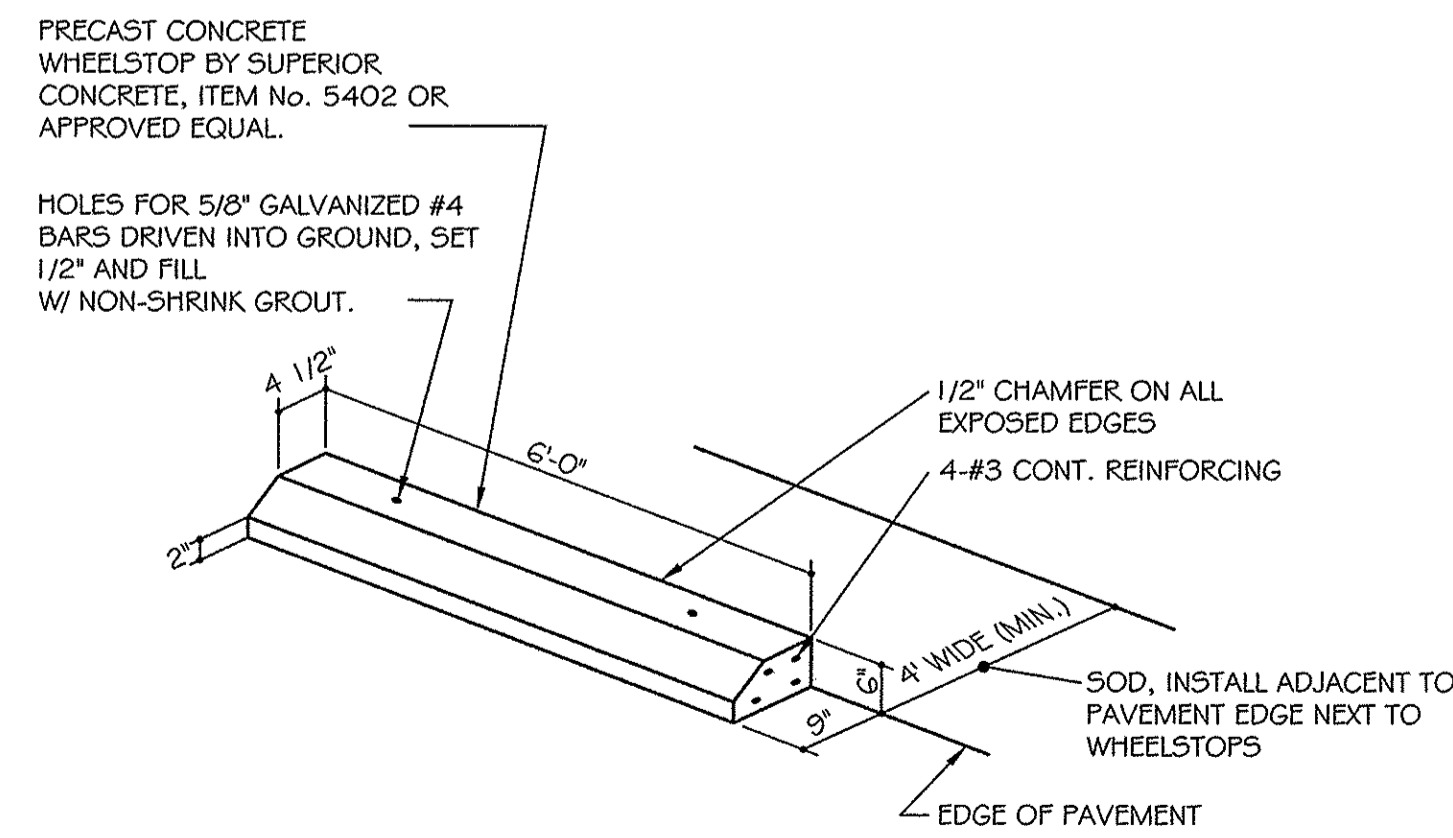
5 RIP-RAP PLUNGE POOL DETAIL
NOT TO SCALE



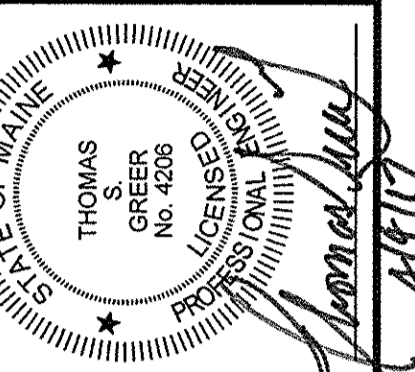
6 RIPRAP SWALE DETAIL
NOT TO SCALE



7 WOOD FENCE DETAIL
NOT TO SCALE



8 CONCRETE WHEELSTOP DETAIL
NOT TO SCALE



REV.	DATE	DESCRIPTION

PORTLAND HOTELS, INC.
1200 BRIGHTON AVENUE
PORTLAND, MAINE

SCALE: AS SHOWN
DATE: APRIL 4, 2017
PROJECT: 16186

DRN BY: JDC
DESIGN BY: TSG
CHK BY: TSG

HOTEL REDEVELOPMENT
1210 BRIGHTON AVENUE
PORTLAND, MAINE

SITE DETAILS