

Prepared For:
PORTLAND HOTEL, INC

Consultant:
ARCHETYPE architects
48 Union Wharf Portland, Maine 04101
(207) 772-6022 ARCHETYPE@ARCHETYPEPA.COM

Architect:
HAMPTON INN & SUITES
1200 Breehton Ave
Portland, ME

Revisions:

1	12-12-15	50% Submission
3	2-25-16	100% Submission
9	3-15-18	Prototype Re-design

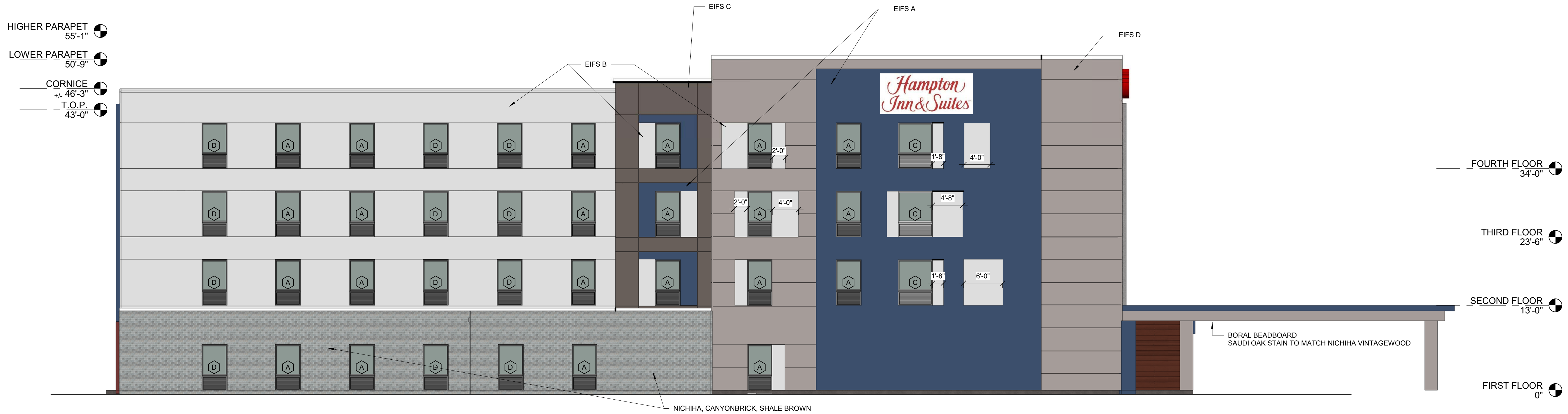
Date: 12-23-2015
Scale: 1/8" = 1'-0"
BUILDING ELEVATIONS

A2.01



1 | NORTH ELEVATION
1/8" = 1'-0"

EIFS A - STO CLASSIC - CADET - 35333-35
EIFS B - STO CLASSIC - STO WHITE - 9433-80
EIFS C - STO CLASSIC - DIAMOND DUST - 20822-56
EIFS D - STO CLASSIC - GRAY DAWN - 33137-71
EIFS E - STO CLASSIC - CORAL - 33120-25



2 | EAST ELEVATION
1/8" = 1'-0"