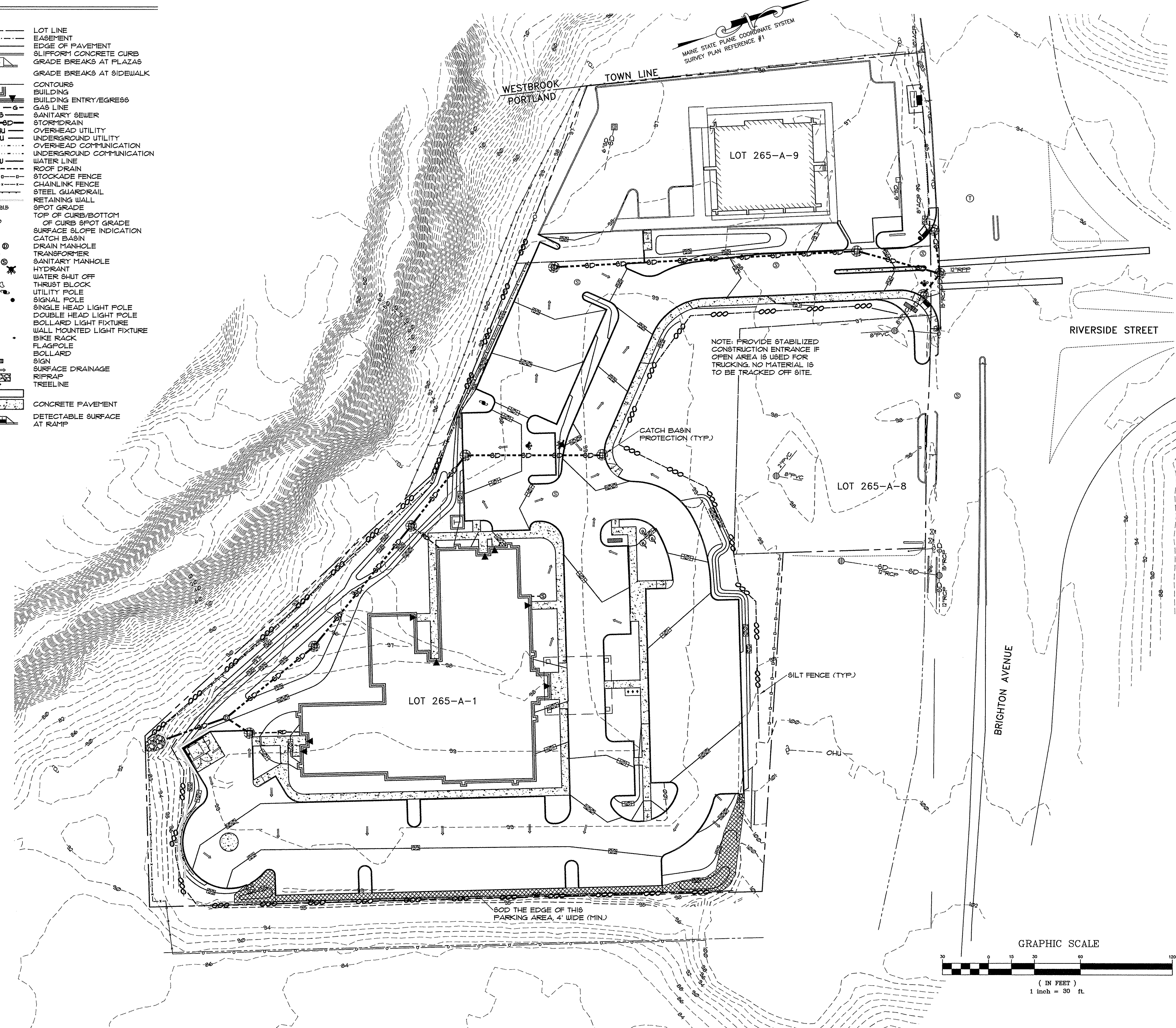


LEGEND

- EXISTING**
- PROPERTY LINE
 - ABUTTERS PROPERTY
 - EASEMENT
 - EDGE OF PAVEMENT
 - CONTOURS
 - BUILDING
 - CURB
 - TOWN LINE
 - GAS LINE
 - SANITARY SEWER
 - STORMDRAIN
 - OHU
 - UGU
 - W
 - OHU
 - UGU
 - W
 - TRANSFORMER
 - SEWER MANHOLE
 - UTILITY POLE
 - UTILITY POLE W/ GUY WIRE
 - SIGN
 - TREE
 - TREELINE
 - CHAINLINK FENCE
 - STOCKADE FENCE
 - GUARDRAIL
 - MONUMENT FOUND
 - IRON PIPE OR ROD FOUND
 - GATE VALVE

- PROPOSED**
- LOT LINE
 - EASEMENT
 - EDGE OF PAVEMENT
 - SLIPFORM CONCRETE CURB
 - GRADE BREAKS AT PLAZAS
 - GRADE BREAKS AT SIDEWALK
 - CONTOURS
 - BUILDING
 - BUILDING ENTRY/EGRESS
 - GAS LINE
 - SANITARY SEWER
 - STORMDRAIN
 - OHU
 - UGU
 - W
 - OHU
 - UGU
 - W
 - TRANSFORMER
 - SEWER MANHOLE
 - UTILITY POLE
 - UTILITY POLE W/ GUY WIRE
 - SIGN
 - TREE
 - TREELINE
 - CHAINLINK FENCE
 - STOCKADE FENCE
 - GUARDRAIL
 - MONUMENT FOUND
 - IRON PIPE OR ROD FOUND
 - GATE VALVE
- EROSION CONTROL LEGEND**
- CATCH BASIN PROTECTION
 - SILT FENCE



PINKHAM & GREER CIVIL ENGINEERS
28 WILKINSON AVE. PORTLAND, ME. 04103
TEL: 207.761.5242 FAX: 207.761.6245

THOMAS GREER
LICENSED PROFESSIONAL ENGINEER
NO. 4206

5/24/17

REV.	DATE	DESCRIPTION
1	5/8/17	REV'D PER STAFF REVIEW
2	5/17/17	ADDED GUARD RAIL
3	5/24/17	DRAFTING CLARIFICATIONS

PORTLAND HOTELS, INC.
1200 BRIGHTON AVENUE
PORTLAND, MAINE

SCALE: AS SHOWN
DATE: APRIL 4, 2017
PROJECT: 16186

DRN BY: JDC
DESG BY: TSG
CHK BY: TSG

HOTEL REDEVELOPMENT
1210 BRIGHTON AVENUE
PORTLAND, MAINE

EROSION CONTROL PLAN

C4.1

MAPLOT 265 / A / 1 & 9