

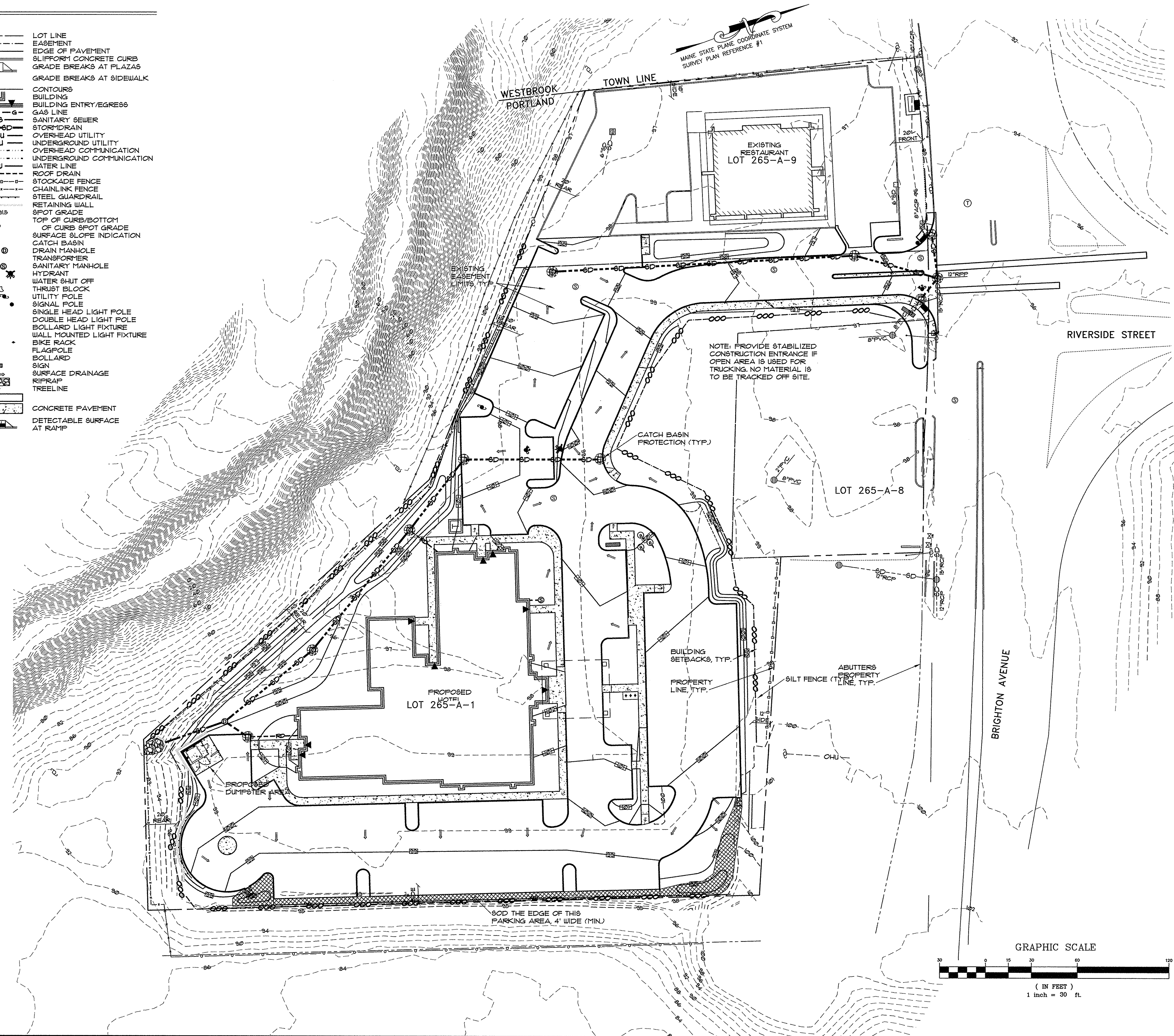
**LEGEND**

- EXISTING**
- PROPERTY LINE
  - ABUTTERS PROPERTY
  - EASEMENT
  - EDGE OF PAVEMENT
  - CONTOURS
  - BUILDING
  - CURB
  - TOWN LINE
  - GAS LINE
  - SANITARY SEWER
  - STORM DRAIN
  - O.H.U.
  - U.G.U.
  - W
  - T
  - TRANSFORMER
  - SEWER MANHOLE
  - UTILITY POLE
  - UTILITY POLE W/ GUY WIRE
  - SIGN
  - TREE
  - TREELINE
  - CHAINLINK FENCE
  - STOCKADE FENCE
  - GUARDRAIL
  - MONUMENT FOUND
  - IRON PIPE OR ROD FOUND
  - GATE VALVE

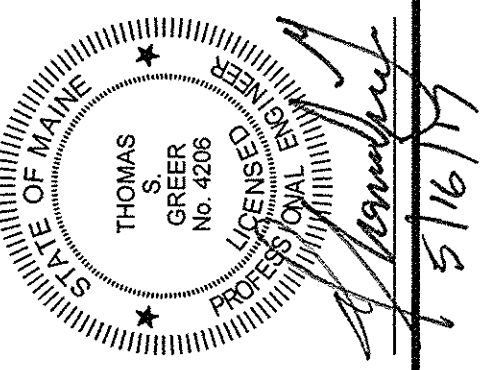
- PROPOSED**
- LOT LINE
  - EASEMENT
  - EDGE OF PAVEMENT
  - SLIPFORM CONCRETE CURB
  - GRADE BREAKS AT PLAZAS
  - GRADE BREAKS AT SIDEWALK
  - CONTOURS
  - BUILDING
  - BUILDING ENTRY/EGRESS
  - GAS LINE
  - SANITARY SEWER
  - STORM DRAIN
  - O.H.U.
  - U.G.U.
  - O.C.C.
  - U.C.C.
  - W
  - R.D.
  - ROOF DRAIN
  - STOCKADE FENCE
  - CHAINLINK FENCE
  - STEEL GUARDRAIL
  - RETAINING WALL
  - SPOT GRADE
  - TOP OF CURB/BOTTOM OF CURB
  - SPOT GRADE
  - SURFACE SLOPE INDICATION
  - CATCH BASIN
  - DRAIN MANHOLE
  - TRANSFORMER
  - SANITARY MANHOLE
  - HYDRANT
  - WATER SHUT OFF
  - THRUST BLOCK
  - UTILITY POLE
  - SIGNAL POLE
  - SINGLE HEAD LIGHT POLE
  - DOUBLE HEAD LIGHT POLE
  - BOLLARD LIGHT FIXTURE
  - WALL MOUNTED LIGHT FIXTURE
  - BIKE RACK
  - FLAGPOLE
  - BOLLARD
  - SIGN
  - SURFACE DRAINAGE
  - RIPRAP
  - TREELINE
  - CONCRETE PAVEMENT
  - DETECTABLE SURFACE AT RAMP

**EROSION CONTROL LEGEND**

- CATCH BASIN PROTECTION
- SILT FENCE
- CONCRETE PAVEMENT
- DETECTABLE SURFACE AT RAMP



**PINKHAM & GREER**  
**CIVIL ENGINEERS**  
 28 WILMAM AVE. PORTLAND, ME. 04103  
 TEL: 207.761.3242 FAX: 207.761.6246



REV.	DATE	DESCRIPTION
1	5/17/17	REV'D PER STAFF REVIEW
2	5/17/17	ADDED GUARD RAIL

PORTLAND HOTELS, INC.  
 1200 BRIGHTON AVENUE  
 PORTLAND, MAINE

SCALE: AS SHOWN  
 DATE: APRIL 4, 2017  
 PROJECT: 16196

DRN BY: JDC  
 DESG BY: TSG  
 CHK BY: *TSG*

HOTEL REDEVELOPMENT  
 1210 BRIGHTON AVENUE  
 PORTLAND, MAINE

**EROSION CONTROL PLAN**

**C4.1**

MAPLOT 265 / A / 1 & 9