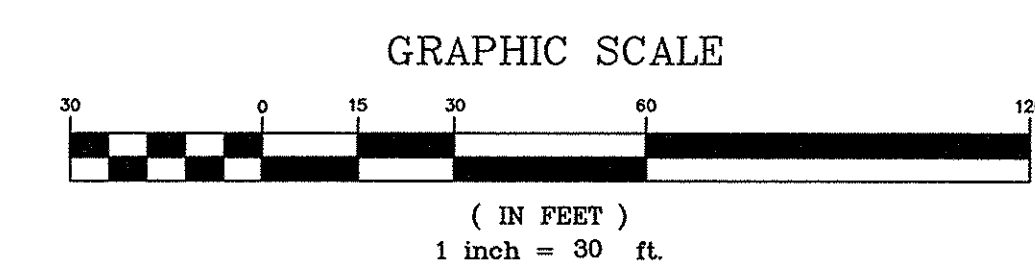
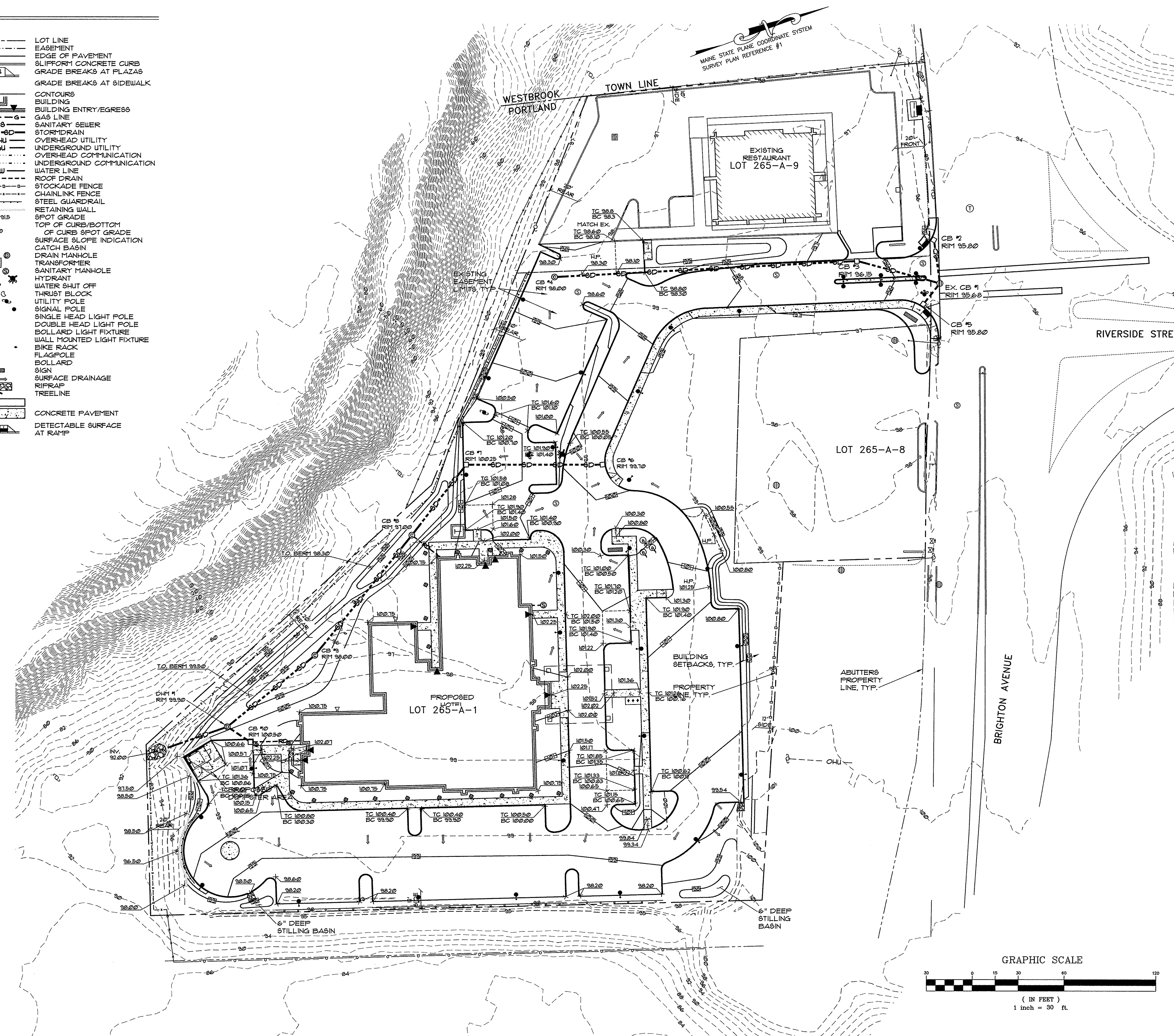


**LEGEND**

EXISTING	PROPOSED
--- PROPERTY LINE	--- LOT LINE
--- ABUTTERS PROPERTY EASEMENT	--- EASEMENT
--- EDGE OF PAVEMENT	--- EDGE OF PAVEMENT
--- CONTOURS	--- 8" SLOPE CONCRETE CURB
--- BUILDING	--- GRADE BREAKS AT PLAZAS
--- CURB	--- GRADE BREAKS AT SIDEWALK
--- TOWN LINE	--- CONTOURS
--- GAS LINE	--- BUILDING
--- SANITARY SEWER	--- BUILDING ENTRY/EGRESS
--- STORM DRAIN	--- GAS LINE
--- OHU	--- SANITARY SEWER
--- UGU	--- STORM DRAIN
--- CATCH BASIN	--- OVERHEAD UTILITY
--- DRAIN MANHOLE	--- UNDERGROUND UTILITY
--- TELEPHONE MANHOLE	--- OVERHEAD COMMUNICATION
--- TRANSFORMER	--- UNDERGROUND COMMUNICATION
--- SEWER MANHOLE	--- WATER LINE
--- UTILITY POLE	--- ROOF DRAIN
--- UTILITY POLE W/ GUY WIRE	--- STOCKADE FENCE
--- SIGN	--- CHAINLINK FENCE
--- TREE	--- STEEL GUARDRAIL
--- TREELINE	--- RETAINING WALL
--- CHAINLINK FENCE	--- SPOT GRADE
--- STOCKADE FENCE	--- TOP OF CURB/BOTTOM OF CURB SPOT GRADE
--- GUARDRAIL	--- SURFACE SLOPE INDICATION
--- MONUMENT FOUND	--- CATCH BASIN
--- IRON PIPE OR ROD FOUND	--- DRAIN MANHOLE
--- GATE VALVE	--- TRANSFORMER
	--- SANITARY MANHOLE
	--- HYDRANT
	--- WATER SHUT OFF
	--- THRUST BLOCK
	--- UTILITY POLE
	--- SIGNAL POLE
	--- SINGLE HEAD LIGHT POLE
	--- DOUBLE HEAD LIGHT POLE
	--- BOLLARD LIGHT FIXTURE
	--- WALL MOUNTED LIGHT FIXTURE
	--- BIKE RACK
	--- FLAGPOLE
	--- BOLLARD
	--- SIGN
	--- SURFACE DRAINAGE
	--- RIPRAP
	--- TREELINE
	--- CONCRETE PAVEMENT
	--- DETECTABLE SURFACE
	--- AT RAMP



**PINKHAM & GREER**  
CIVIL ENGINEERS

28 WANKAM AVE. PORTLAND, ME. 04103  
TEL: 207.781.5242 FAX: 207.781.4245

5/16/17

REV.	DATE	DESCRIPTION
2	5/17/17	ADDED GUARD RAIL
1	5/8/17	REV'D PER STAFF REVIEW

PORTLAND HOTELS, INC.  
1200 BRIGHTON AVENUE  
PORTLAND, MAINE

SCALE: AS SHOWN  
DATE: APRIL 4, 2017  
PROJECT: 16186

DRN BY: JDC  
DESIGN BY: TSG  
CHK BY: TSG

DRN BY: JDC  
DESIGN BY: TSG  
CHK BY: TSG

HOTEL REDEVELOPMENT  
1210 BRIGHTON AVENUE  
PORTLAND, MAINE

GRADING DETAIL PLAN

C3.2

MAP/LOT 265 / A / 1 & 9