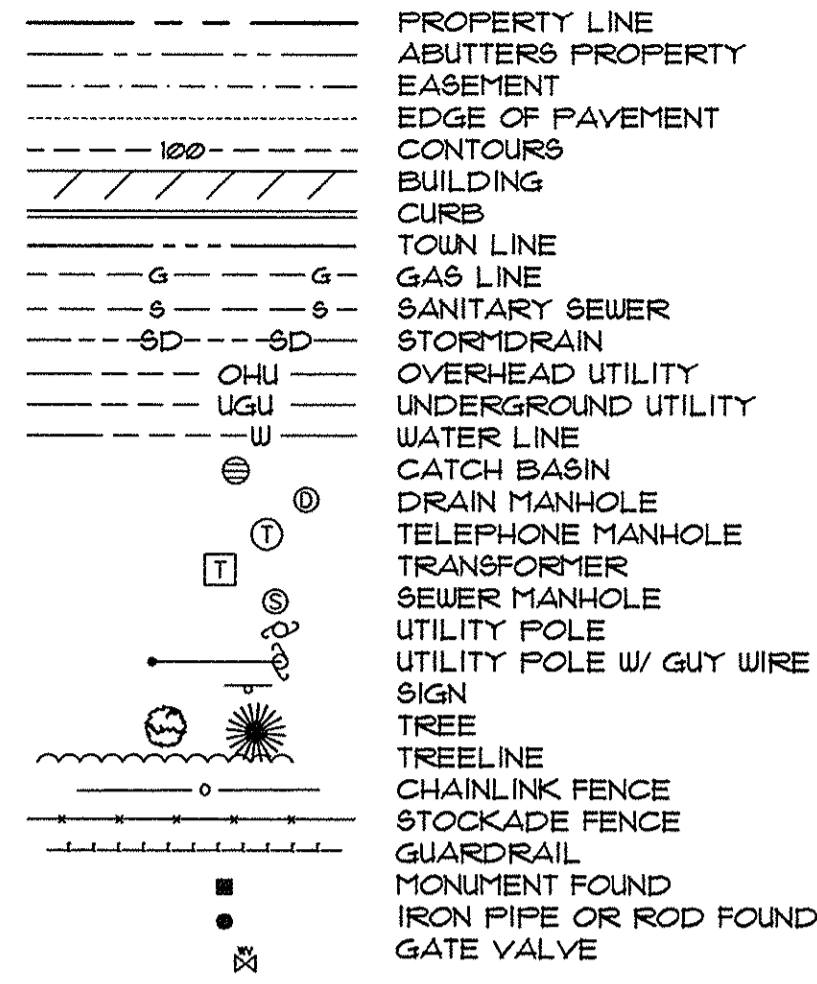
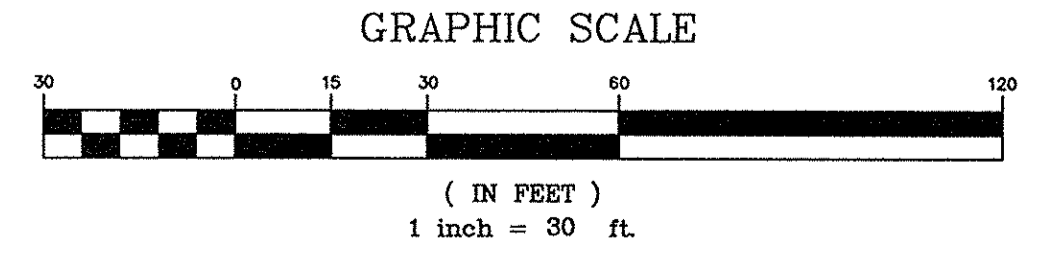
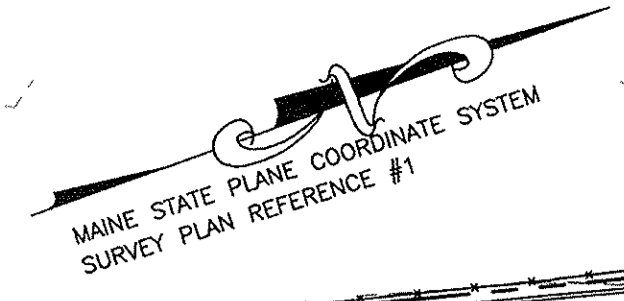
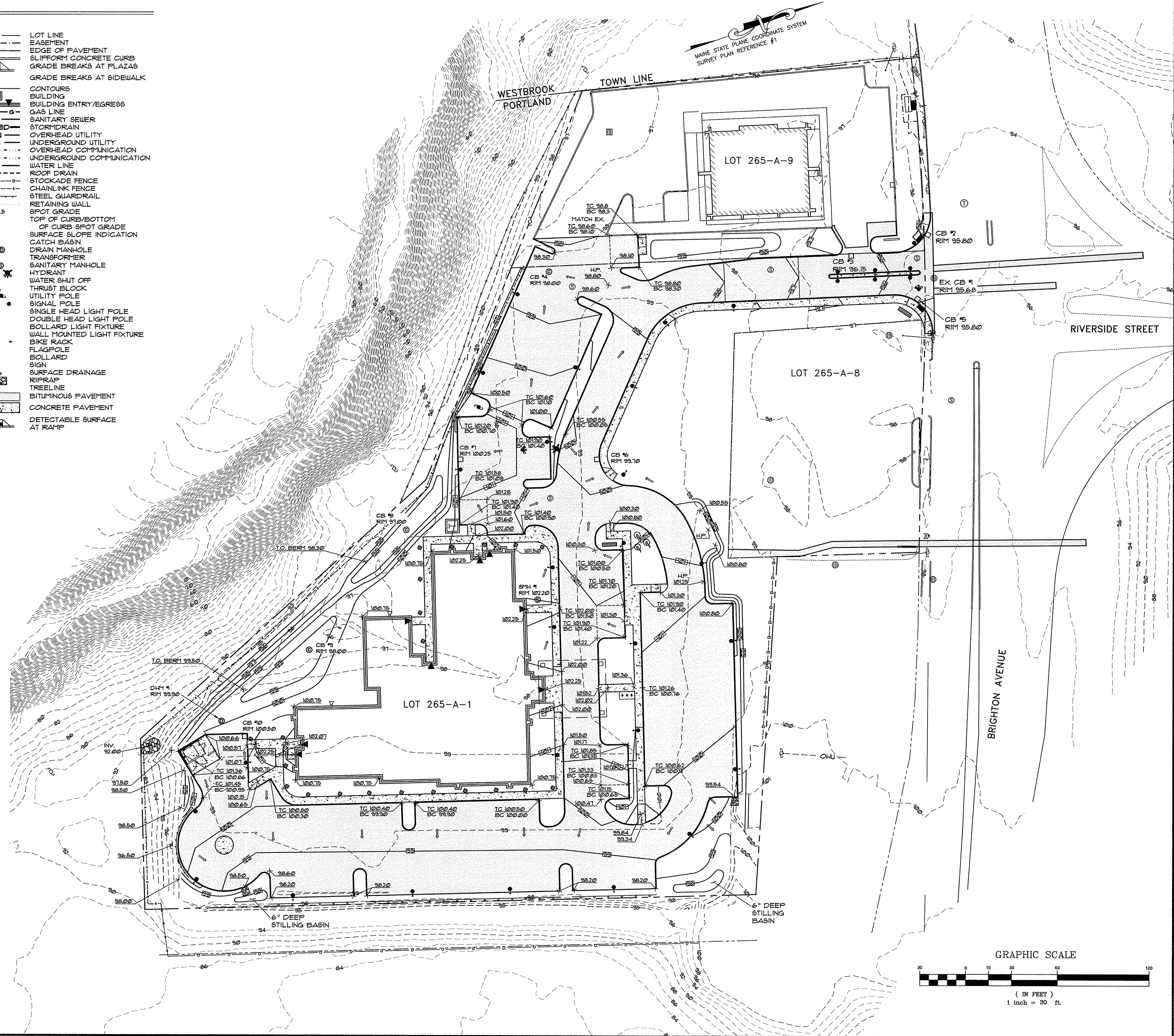
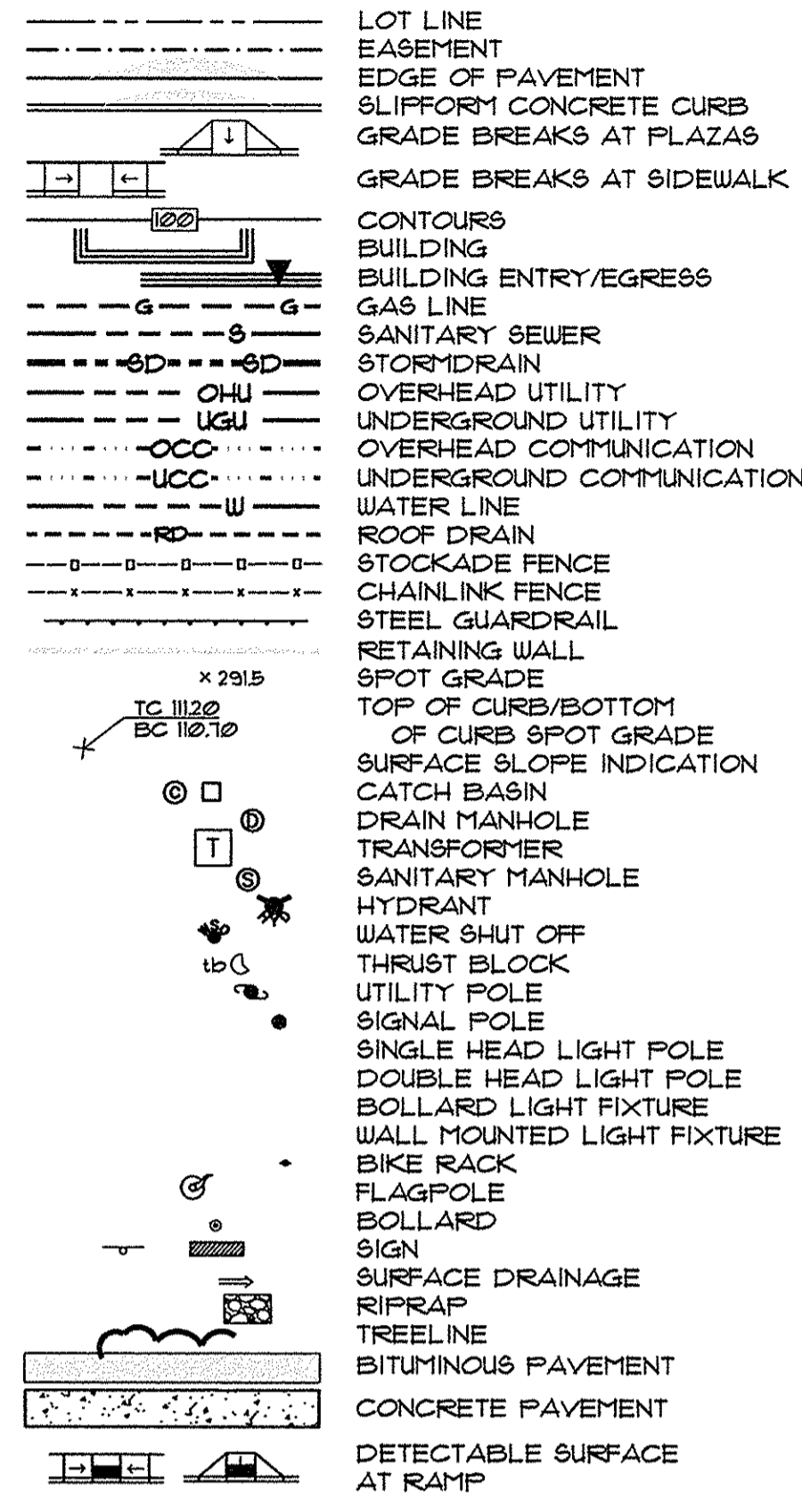


LEGEND

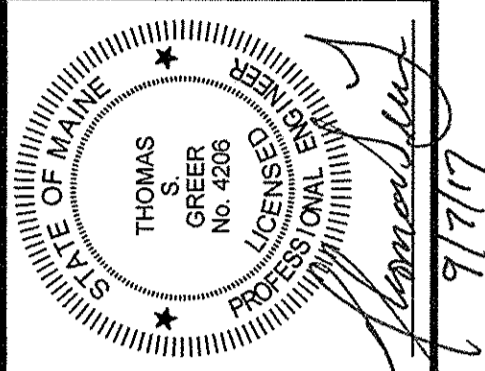
EXISTING



PROPOSED



PINKHAM & GREER
CIVIL ENGINEERS
28 WINDHAM AVE. PORTLAND, ME 04103
TEL: 207.761.5442 FAX: 207.761.4245



REV.	DATE	DESCRIPTION
1	5/8/17	REV'D PER STAFF REVIEW
2	5/17/17	ADDED GUARD RAIL
3	5/24/17	DRAFTING CLARIFICATIONS
4	9/17/17	ADJUST GRADING ON DRIVEWAY

PORTLAND HOTELS, INC.
1200 BRIGHTON AVENUE
PORTLAND, MAINE

SCALE: AS SHOWN
DATE: APRIL 4, 2017
PROJECT: 16186

DRN BY: JDC
DESIGN BY: TSG
CHK BY: TSG

HOTEL REDEVELOPMENT
1210 BRIGHTON AVENUE
PORTLAND, MAINE

GRADING DETAIL PLAN

C3.2 CITY OF PORTLAND
APPROVED SITE PLAN
Subject to Conditions of Approval
& Standard Conditions

DATE OF APPROVAL: 4/4/15, amended 6/8/17
PLANNER: Neil Donaldson
PROJECT NO: 2014-220, amended 2017-072