

PHOTOMETRIC PLAN NOTES:

1. FIXTURE LAYOUT, SCHEDULE, NOTES AND PHOTOMETRIC CALCULATIONS WERE PREPARED BY SWANEY LIGHTING ASSOCIATES OF SCARBOROUGH, MAINE.

NOTES:

- 1) EXACT MOUNTING DETAILS TO BE DETERMINED AT JOBSITE BY OTHERS.
- 2) CALCULATIONS MAY SHOW THE EFFECT OF SHADOWING CAUSED BY BUILDINGS AND OBJECTS WITHIN THE CALCULATED SPACE OR IN THE SITE AREA.
- 3) READINGS SHOWN ARE INITIAL HORIZONTAL FOOTCANDLES TAKEN AS SHOWN IN CALCULATION SUMMARY UNLESS OTHERWISE INDICATED.
- 4) THIS CALCULATION IS BASED ON LIMITED INFORMATION SUPPLIED BY OTHERS TO SWANEY LIGHTING ASSOCIATES AND STANDARD ASSUMPTIONS OF THE SPACE AND/OR SITE.
- 5) CONFORMANCE TO CODES AND OTHER LOCAL REQUIREMENTS AS DETERMINED BY THE AHJ ARE THE RESPONSIBILITY OF THE OWNER AND/OR THE OWNER'S REPRESENTATIVE.
- 6) THIS LAYOUT DRAWING MUST BE COORDINATED WITH THE SITE LOCATION FOR CORRECT FIXTURE ORIENTATION.
- 7) CHECK GRAPHIC SCALE. DOCUMENTS PRINTED OR PLOTTED FROM ELECTRONIC FILES MAY OCCUR AT OTHER THAN THE DESIRED OR ASSUMED GRAPHIC SCALES. IT IS THE RESPONSIBILITY OF THE RECIPIENT TO VERIFY THAT THE PRINTED OR PLOTTED-TO-SCALE DRAWING IS PRINTED TO SCALE.

LIGHTING LEGEND:

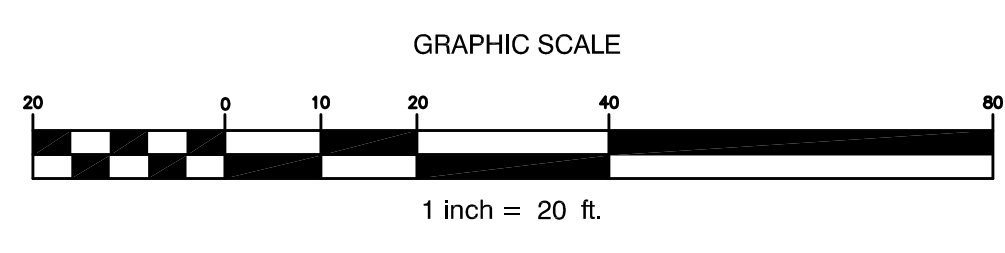
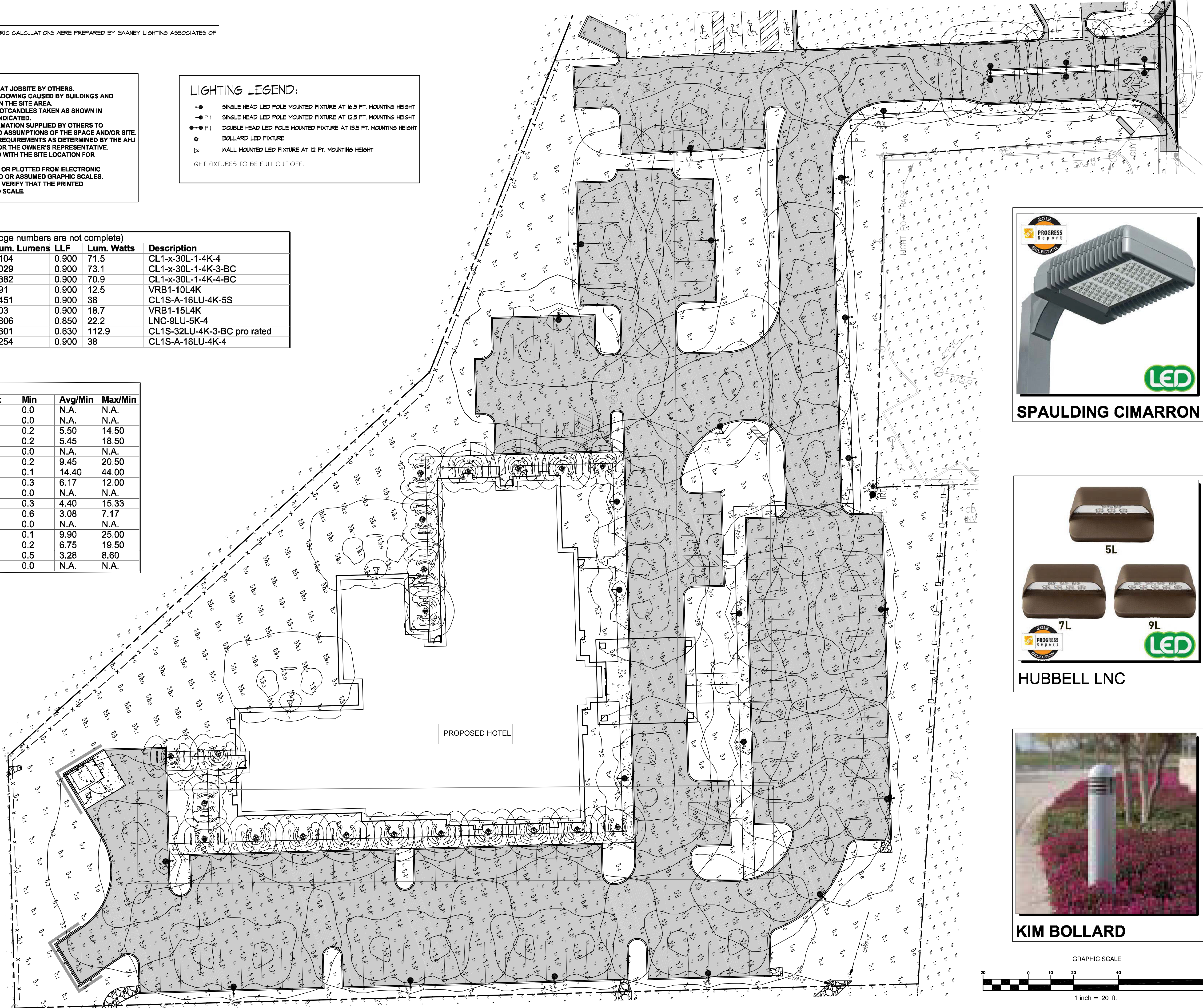
- SINGLE HEAD LED POLE MOUNTED FIXTURE AT 16.5 FT. MOUNTING HEIGHT
 - P1 SINGLE HEAD LED POLE MOUNTED FIXTURE AT 12.5 FT. MOUNTING HEIGHT
 - P1 DOUBLE HEAD LED POLE MOUNTED FIXTURE AT 13.5 FT. MOUNTING HEIGHT
 - BOLLARD LED FIXTURE
 - ▽ WALL MOUNTED LED FIXTURE AT 12 FT. MOUNTING HEIGHT
- LIGHT FIXTURES TO BE FULL CUT OFF.

Luminaire Schedule (note fixture catalogue numbers are not complete)

Type	Symbol	Qty	Lum.	Lumens	LLF	Lum. Watts	Description
C4	□	5	6104	0.900	71.5		CL1-x-30L-1-4K-4
C3B	□	6	4029	0.900	73.1		CL1-x-30L-1-4K-3-BC
C4B	□	7	4882	0.900	70.9		CL1-x-30L-1-4K-4-BC
B1	○	7	491	0.900	12.5		VRB1-10L4K
CS5S	□	3	3451	0.900	38		CL1S-A-16LU-4K-5S
B3	○	14	703	0.900	18.7		VRB1-15L4K
W1	□	2	1806	0.850	22.2		LNC-9LU-5K-4
CS3MB	□	1	5801	0.630	112.9		CL1S-32LU-4K-3-BC pro rated
CS4L	□	3	3254	0.900	38		CL1S-A-16LU-4K-4

Calculation Summary

Label	Avg	Max	Min	Avg/Min	Max/Min
Back Lawn	0.29	1.2	0.0	N.A.	N.A.
Beyond property	0.01	1.7	0.0	N.A.	N.A.
Drop Pick up Drive	1.10	2.9	0.2	5.50	14.50
East Parking	1.09	3.7	0.2	5.45	18.50
East Property line	0.08	0.1	0.0	N.A.	N.A.
Entrance Drive	1.89	4.1	0.2	9.45	20.50
Front walk	1.44	4.4	0.1	14.40	44.00
North Parking	1.85	3.6	0.3	6.17	12.00
North Property line	0.01	0.1	0.0	N.A.	N.A.
North walk at parkin	1.32	4.6	0.3	4.40	15.33
SE walk	1.85	4.3	0.6	3.08	7.17
South Property line	0.03	0.1	0.0	N.A.	N.A.
West Annex parking	0.99	2.5	0.1	9.90	25.00
West parking	1.35	3.9	0.2	6.75	19.50
West Walk	1.64	4.3	0.5	3.28	8.60
Whole Site	1.00	4.2	0.0	N.A.	N.A.



WALSH
ENGINEERING ASSOCIATES, INC.
One Karen Dr., Suite 2A | Westbrook, Maine 04092
ph: 207.553.9898 | www.walsh-eng.com
Copyright © 2014

LAND DESIGN SOLUTIONS
LANDSCAPE ARCHITECTURE
P.O. BOX 316, LONGWOODS RD.
CUMBERLAND, ME 04081
TEL: 939-1717

HOTEL REDEVELOPMENT
1210 Brighton Avenue
Portland, Maine
Portland Hotels, Inc.
1200 Brighton Avenue
Portland, Maine 04102

ISSUED FOR PERMITTING – NOT FOR CONSTRUCTION

Rev.	Date	Description	Drawn	Check
1	04/15	SUBMITTED FOR CITY REVIEW	PBB	PBB
2	04/15	REVISED PER CITY COMMENTS	PBB	PBB

Sheet Title:
PHOTOMETRIC PLAN

Job No.:	257	Sheet No.:	P1
Date:	Nov, 14, 2014		
Scale:	1"=20'		
Drawn:	PBB		
Checked:	PBB		

