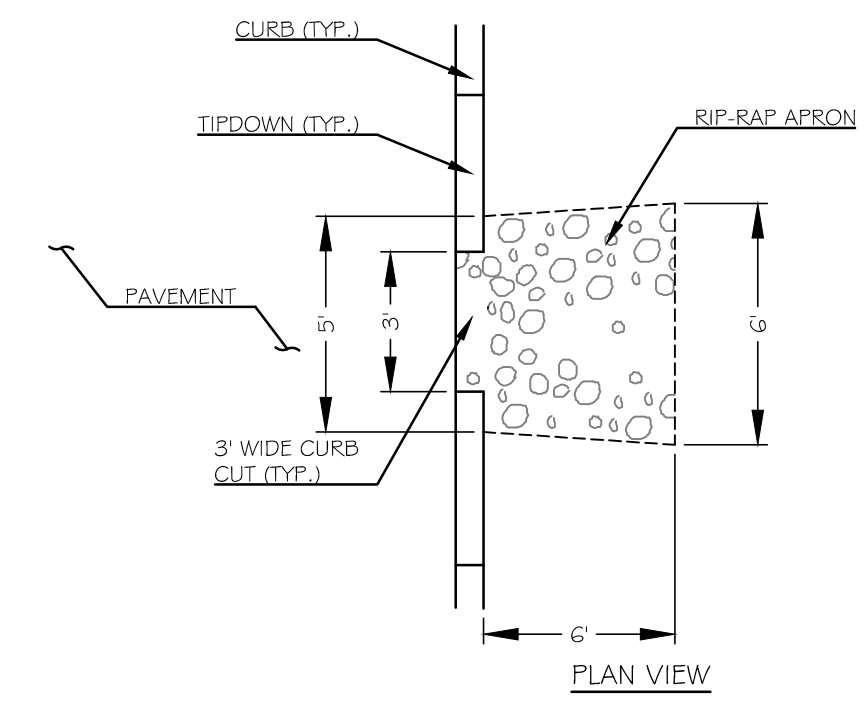


NOTES:

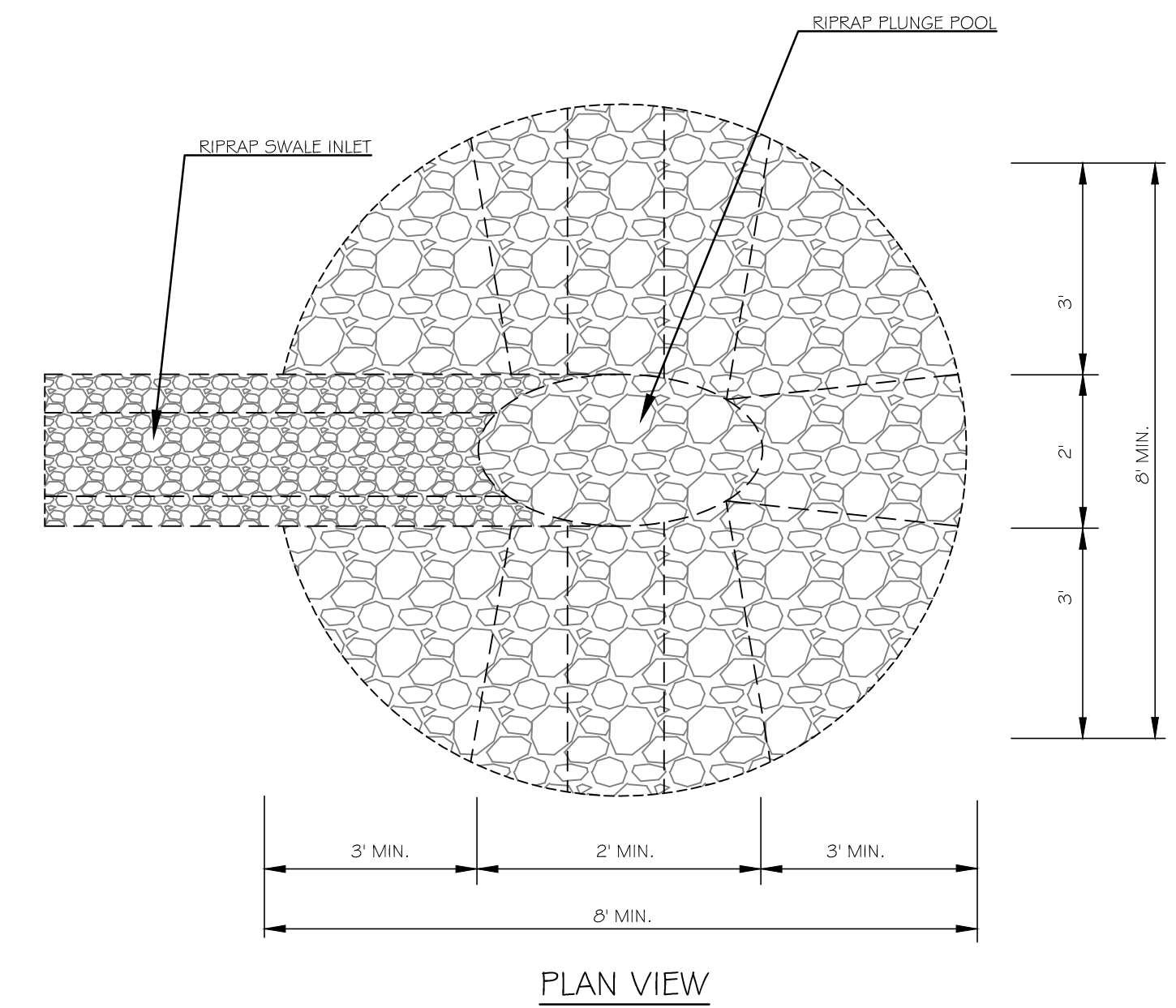
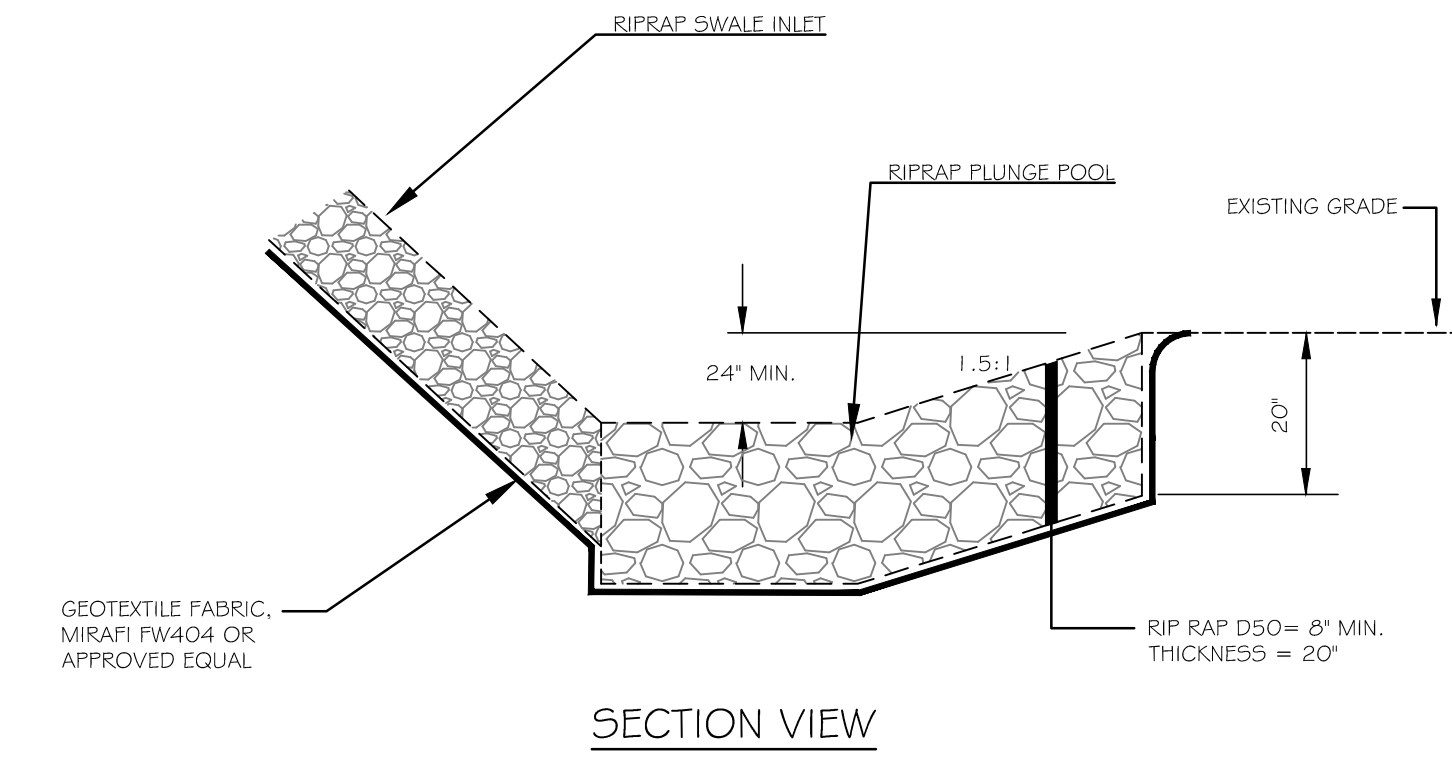
- USE  $D_{50}$  NOTED ON TABLE UNLESS OTHERWISE SPECIFIED ON PLANS.
- UNDERLAY RIP-RAP WITH 6" OF GRAVEL OR GEOTEXTILE
- USE WIDTHS NOTED ABOVE OR CONFORM TO NATURAL CHANNEL OR TOPOGRAPHY.

D	L	W	$D_{50}$
6"	2.25'	2'	6"
12"	4.5'	4'	8"
15"	5.63'	5'	8"
18"	6.75'	6'	8"

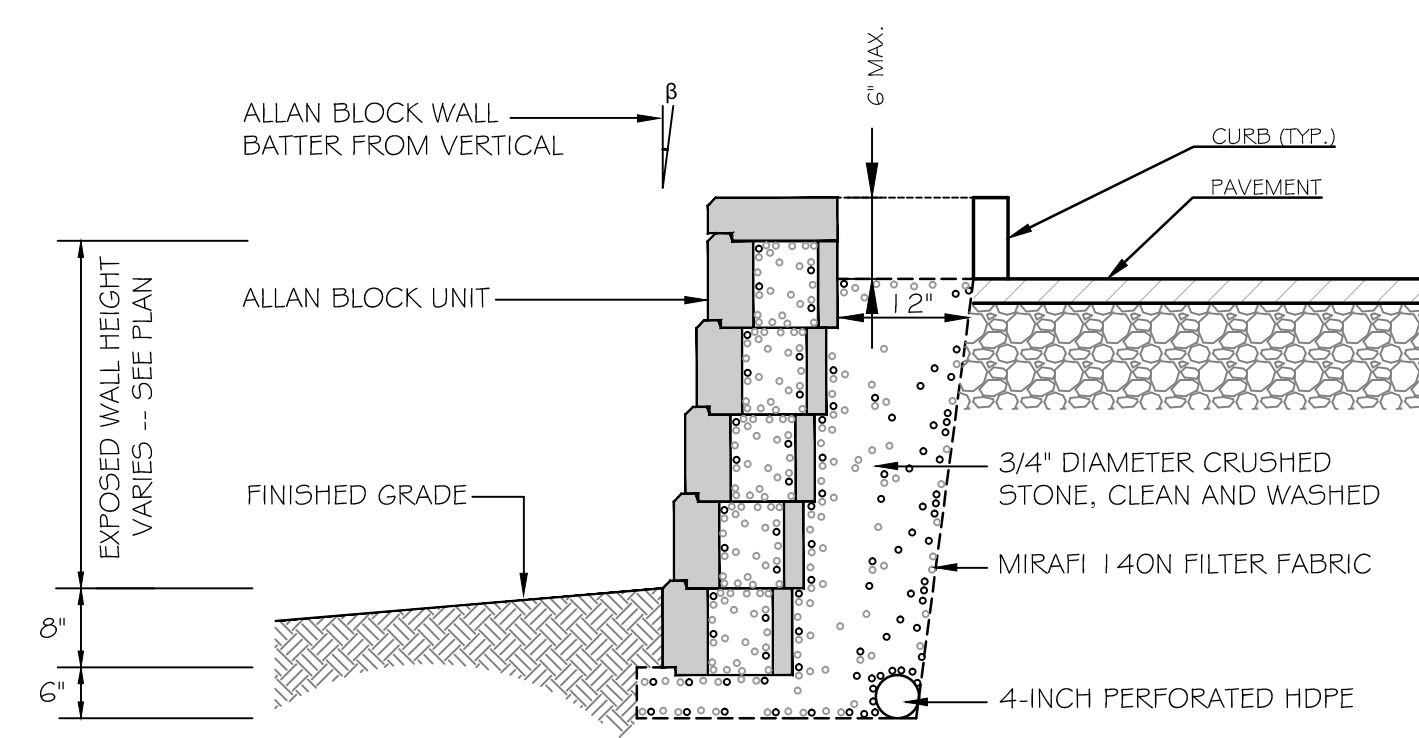
1 RIP-RAP APRON (PIPE OUTLET)  
C4.5 NOT TO SCALE



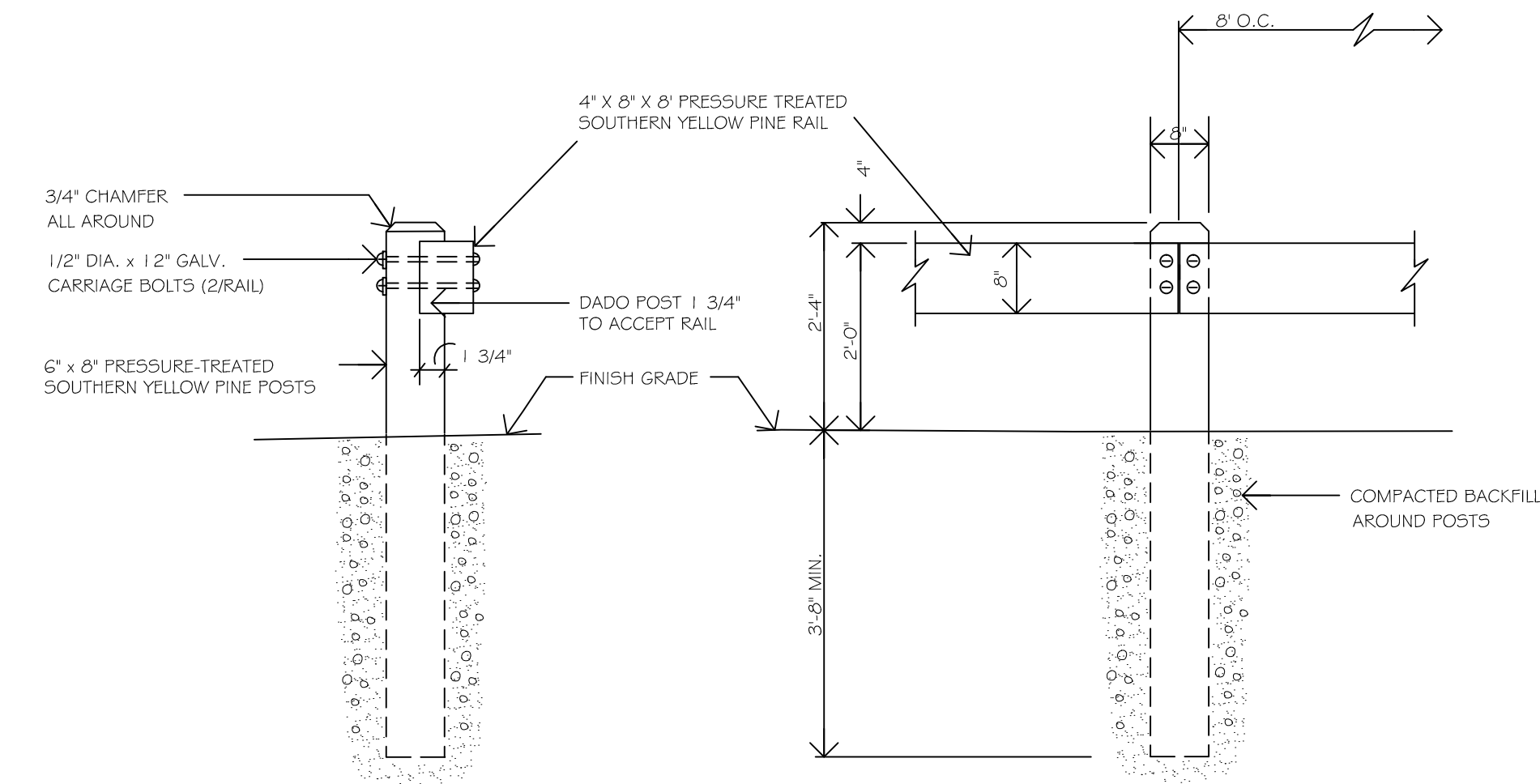
2 RIP-RAP APRON (CURB CUT)  
C4.5 NOT TO SCALE



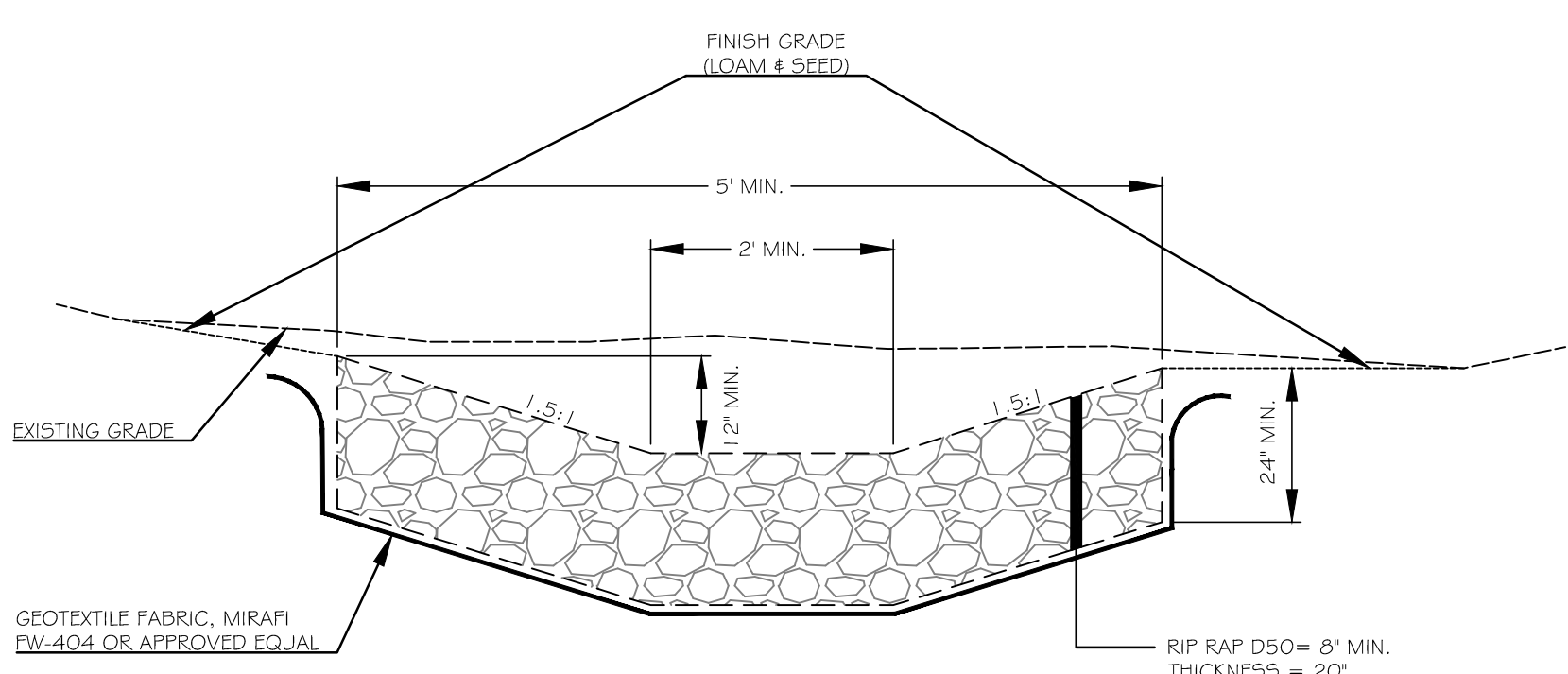
5 RIP-RAP PLUNGE POOL DETAIL  
C4.5 NOT TO SCALE



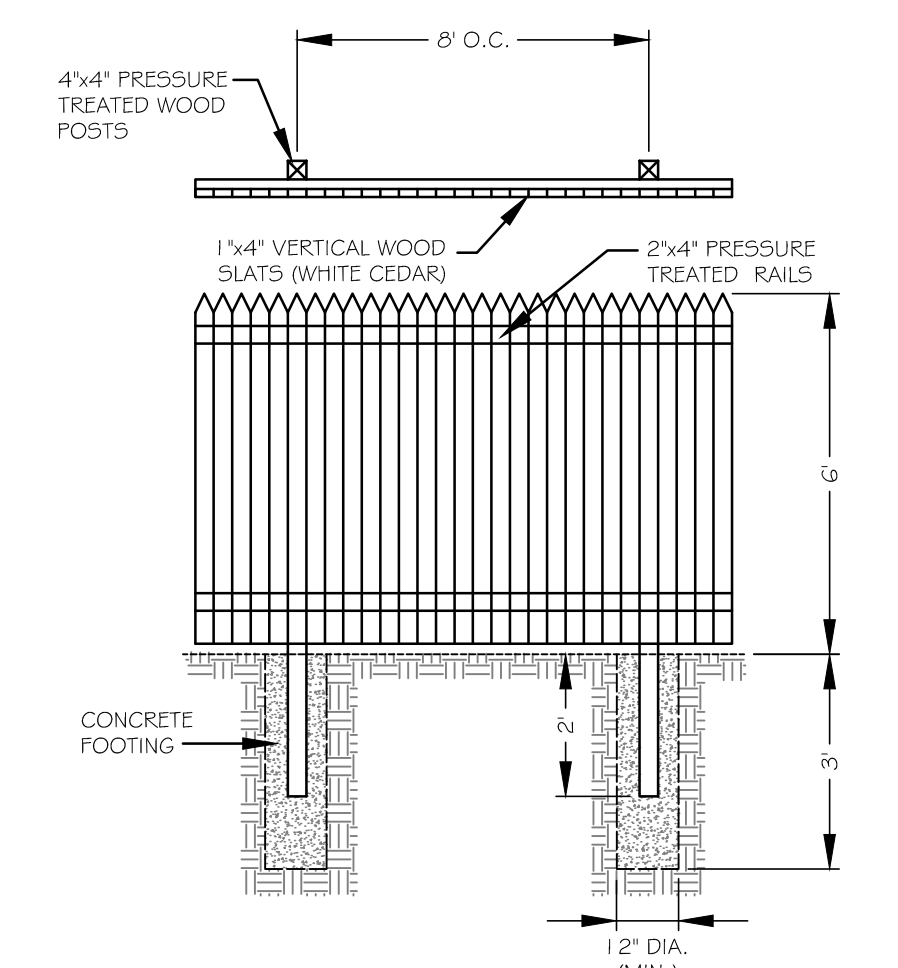
3 ALLAN BLOCK RETAINING WALL  
C4.5 NOT TO SCALE



4 WOODEN GUARD RAIL SECTION  
C4.5 NOT TO SCALE



6 RIPRAP SWALE DETAIL  
C4.5 NOT TO SCALE



7 WOOD FENCE DETAIL  
C4.5 NOT TO SCALE

HOTEL REDEVELOPMENT  
1210 Brighton Avenue  
Portland, Maine

Portland Hotels, Inc.  
1200 Brighton Avenue  
Portland, Maine 04102

ISSUED FOR PERMITTING - NOT FOR CONSTRUCTION

Rev.	Date	Description	Drawn	Check
1	11/14/14	Submitted for Prelim. Level II Site Plan Application	SWC	WRW
2	11/18/14	Revised Cover Sheet and Zoning Summary	SWC	WRW
3	2/7/15	Revised Per City Staff Review Comments	SWC	WRW
4	3/6/15	Revised Per City Staff Review Comments	SWC	WRW

Sheet Title:  
**SITE DETAILS**

Job No.: 257  
Date: Nov. 14, 2014  
Scale: NTS  
Drawn: SWC  
Checked: WRW  
Sheet No.:  
**C4.5**