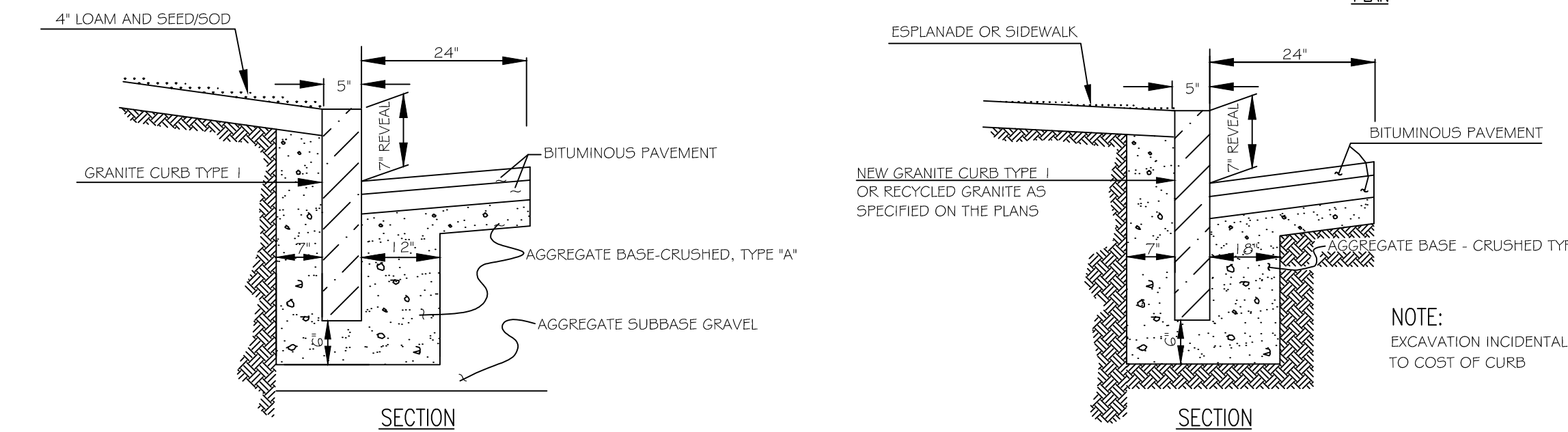


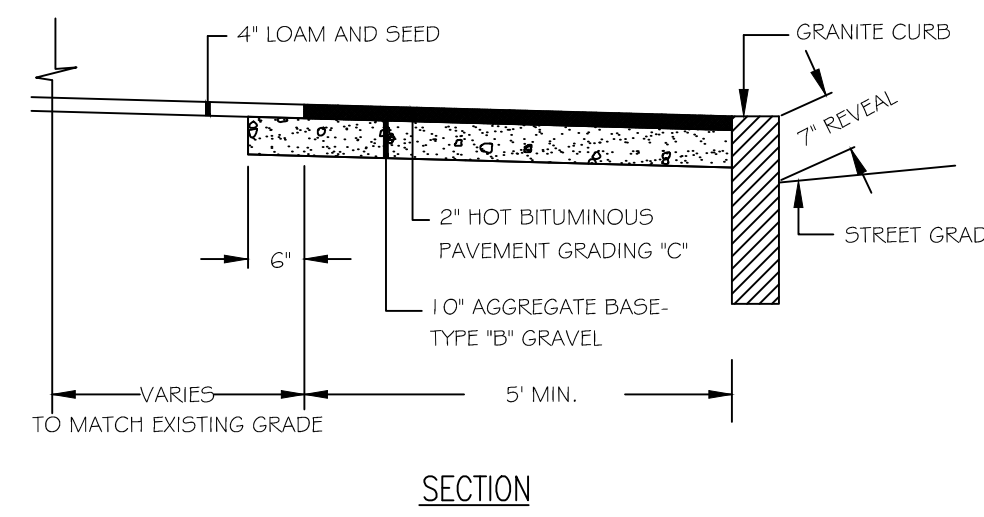
TYPICAL TIPDOWN CURB INSTALLATION  
NOT TO SCALE



INSTALLATION OF CURB  
NOT TO SCALE

CURB REPLACEMENT DETAIL  
NOT TO SCALE

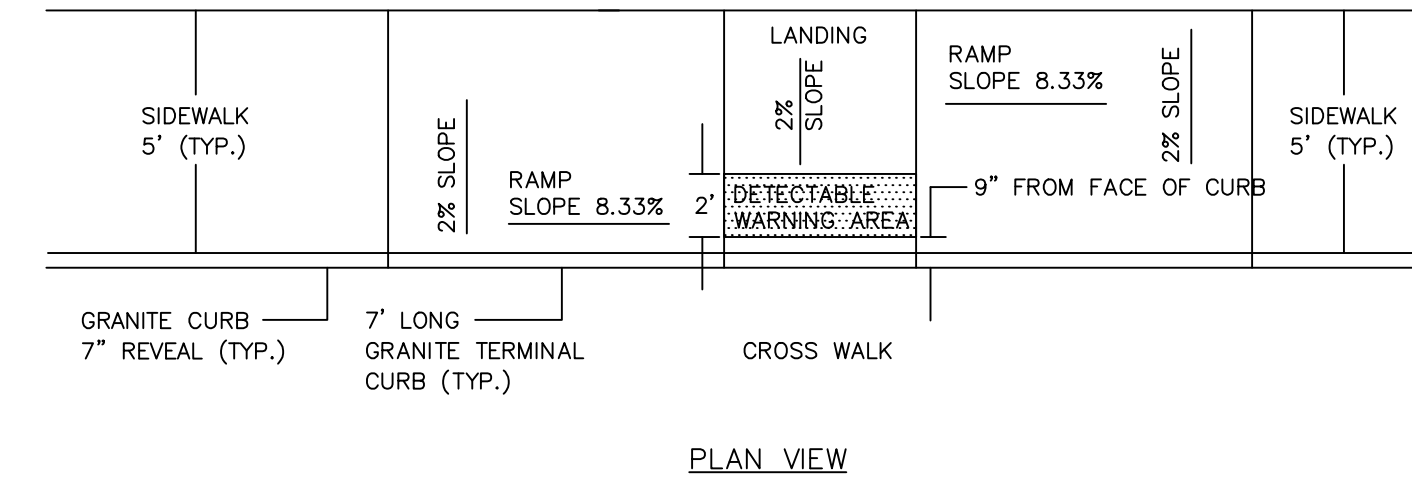
TYPICAL INSTALLATION OF CURB  
NOT TO SCALE



BITUMINOUS SIDEWALK DETAIL - NO ESPLANADE  
NOT TO SCALE

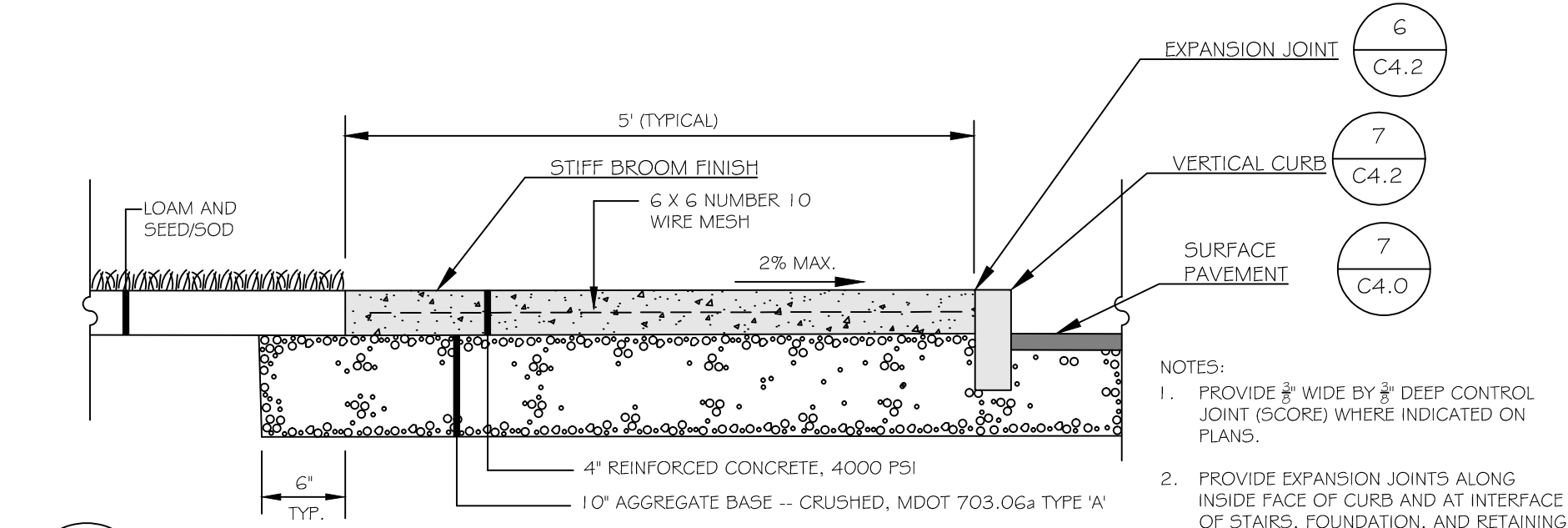
**NOTES:**

- ALL RAMP SHALL COMPLY WITH ADA STANDARDS.
- GRANITE CURB ADJACENT TO LANDING SHALL BE FLUSH WITH STREET.
- SIDEWALK MATERIAL PER CITY SIDEWALK MATERIAL POLICY.



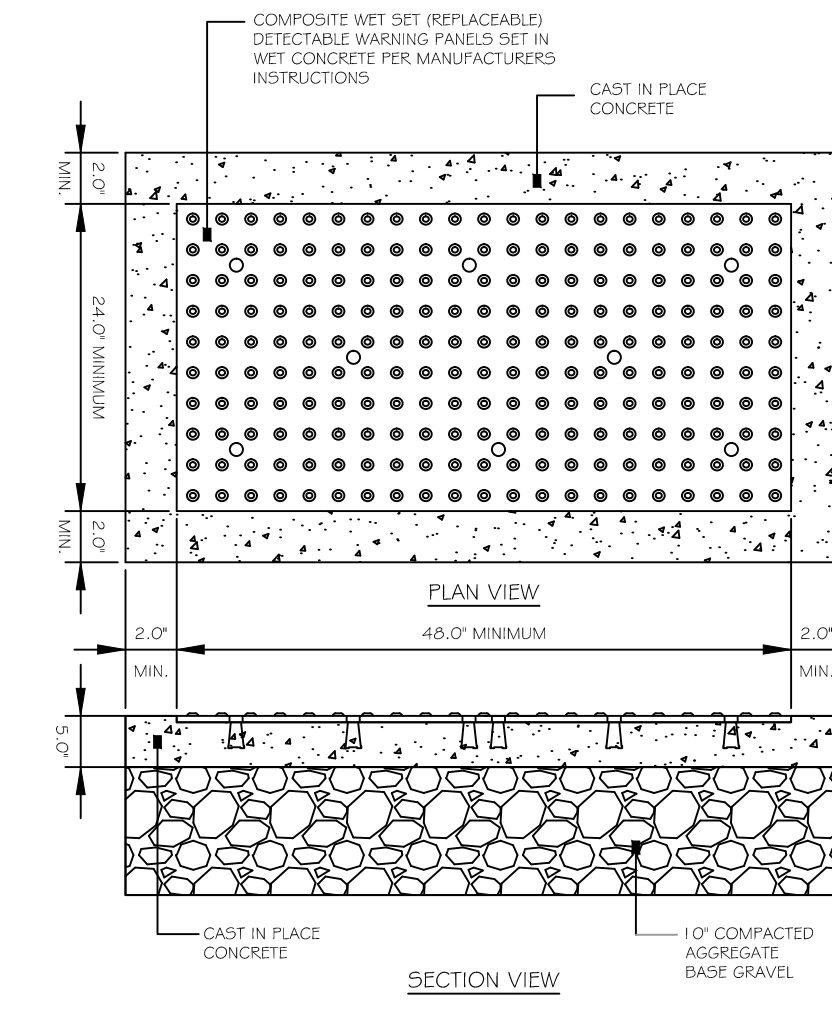
PARALLEL SIDEWALK RAMP LAYOUT FOR NARROW SIDEWALK WITH NO ESPLANADE  
NOT TO SCALE

**1 GRANITE CURB INSTALLATION DETAIL (BRIGHTON AVE R.O.W.)**  
C4.3 NOT TO SCALE



**4 CONCRETE SIDEWALK DETAIL**  
C4.3 NOT TO SCALE

**2 SIDEWALK RECONSTRUCTION (BRIGHTON AVE)**  
C4.3 NOT TO SCALE



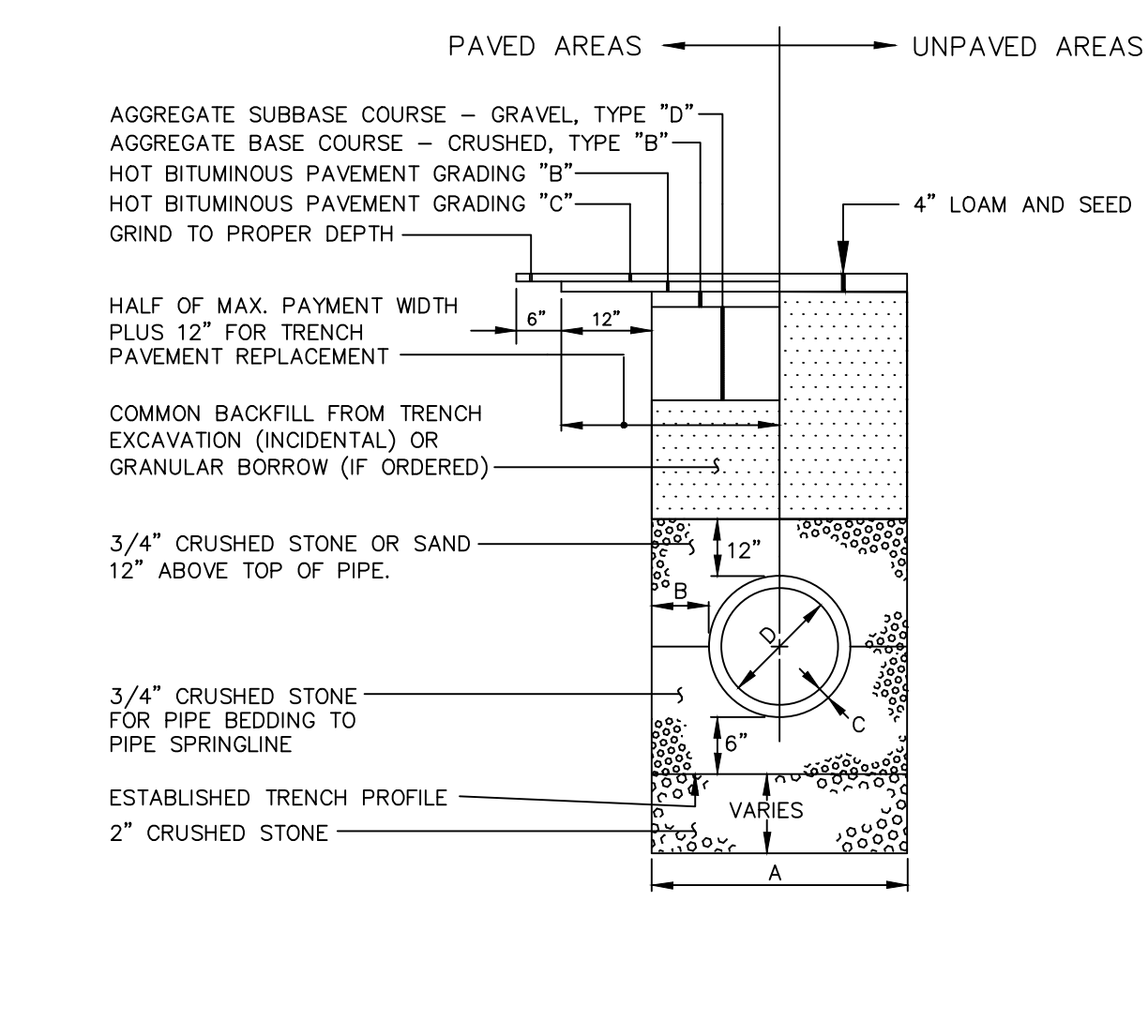
**5 SIDEWALK RAMP DETECTABLE WARNING PANEL**  
C4.3 NOT TO SCALE

- NOTES:**
- COMPOSITE WET SET (REPLACEABLE) DETECTABLE WARNING PANELS SHALL BE AS MANUFACTURED BY ADA SOLUTIONS, INC. (WWW.ADATILE.COM), OR APPROVED EQUAL.
  - CAST IN PLACE CONCRETE SHALL MEET SPECIFICATIONS FOR MAINE D.O.T. CLASS A STRUCTURAL CONCRETE. MINIMUM COMPRESSIVE STRENGTH 4000 PSI. THE CONCRETE SHALL BE SEALED PRIOR TO SETTING PANELS. THE EXPOSED CONCRETE BORDER SHALL RECEIVE A GROOVED EDGE BETWEEN THE PANEL AND CONCRETE, ALONG WITH A UNIFORM BROOM FINISH PERPENDICULAR TO THE FLOW OF PEDESTRIAN TRAFFIC.
  - TRUNCATED DOMES SHALL BE ALIGNED IN ROWS, PARALLEL AND PERPENDICULAR TO THE PREDOMINANT DIRECTION OF TRAVEL. TRUNCATED DOME BRICKS AND GRANITE PAVES ARE NOT ALLOWED.
  - FOR ALL DETECTABLE WARNING PANELS (EXCEPT AS SPECIFIED IN FIGURE 1-7A AND TECHNICAL MANUAL SECTION 1.8.4.3), FEDERAL YELLOW COLORED (#33535) PANELS SHALL BE USED. FOLLOW MANUFACTURER'S INSTRUCTIONS FOR INSTALLATION.
  - SIZE: THE DETECTABLE WARNING PANELS SHALL EXTEND 24 INCHES MINIMUM IN THE DIRECTION OF TRAVEL AND THE FULL WIDTH OF THE CURB RAMP, LANDING, OR SLOPED TRANSITION TO THE STREET.
  - ORIENTATION: THE DETECTABLE WARNING PANEL SHALL BE LOCATED SO THAT THE EDGE NEAREST THE CURB LINE IS 2 INCHES MINIMUM AND 4 INCHES MAXIMUM FROM THE BACK OF THE CURB LINE. THE PANEL SHALL BE ORIENTED TO THE DIRECTION OF TRAVEL AS IDENTIFIED BY THE POINT OF EGRESS.

- NOTES:**
- DEPTH OF BITUMINOUS PAVEMENT AND AGGREGATE COURSES SHALL BE DETERMINED BY STREET CLASSIFICATION.
  - ANY ALTERNATE TRENCHING OR PAYMENT METHODS SHALL BE APPROVED IN ADVANCE BY THE CITY OF PORTLAND, DEPARTMENT OF PUBLIC SERVICES.

- NOTES:**
- ALTERNATIVE CONSTRUCTION METHODS OR PAYMENT METHODS SHALL BE APPROVED IN ADVANCE BY THE CITY. IN PAVED AREAS, DEPTHS OF GRAVEL AND HOT MIX ASPHALT PAVEMENT SHALL MATCH THE GREATER OF EXISTING CONDITIONS OR THE REQUIREMENTS FOR THE CORRESPONDING STREET CLASSIFICATION.
  - DIMENSION B SHALL BE SUFFICIENT TO ALLOW CRUSHED STONE BEDDING TO BE PLACED AND COMPACTED UNDER THE HAUNCHES OF THE PIPE; BUT IN ALL CASES DIMENSION B SHALL BE AT LEAST 9\"/>

PIPE DIAMETER, D (INCHES)	MAX. TRENCH WIDTH, A (FEET)
4	4.0
6	4.0
8	4.0
10	4.0
12	5.0
15	5.0
18	5.0
21	5.0
24	6.0
27	6.0
30	6.0
36	6.0
42	7.0
48	7.0



TYPICAL PIPE TRENCH INSTALLATION  
NOT TO SCALE

TYPICAL PIPE INSTALLATION - NOTES  
NOT TO SCALE

**6 PIPE TRENCH DETAIL (BRIGHTON AVE R.O.W.)**  
C4.3 NOT TO SCALE

**HOTEL REDEVELOPMENT**  
1210 Brighton Avenue  
Portland, Maine

Portland Hotels, Inc.  
1200 Brighton Avenue  
Portland, Maine 04102

ISSUED FOR PERMITTING - NOT FOR CONSTRUCTION

Rev.	Date	Description	Drawn	Check
1	11/14/14	Submitted for Prelim. Level II Site Plan Application	SWC	WRW
2	11/18/14	Revised Cover Sheet and Zoning Summary	SWC	WRW
3	2/17/15	Revised Per City Staff Review Comments	SWC	WRW
4	3/6/15	Revised Per City Staff Review Comments	SWC	WRW

Sheet Title:  
**SITE DETAILS**

Job No.:	257	Sheet No.:	<b>C4.3</b>	
Date:	Nov. 14, 2014	Scale:		NTS
Drawn:	SWC	Checked:		WRW
Checked:	WRW			