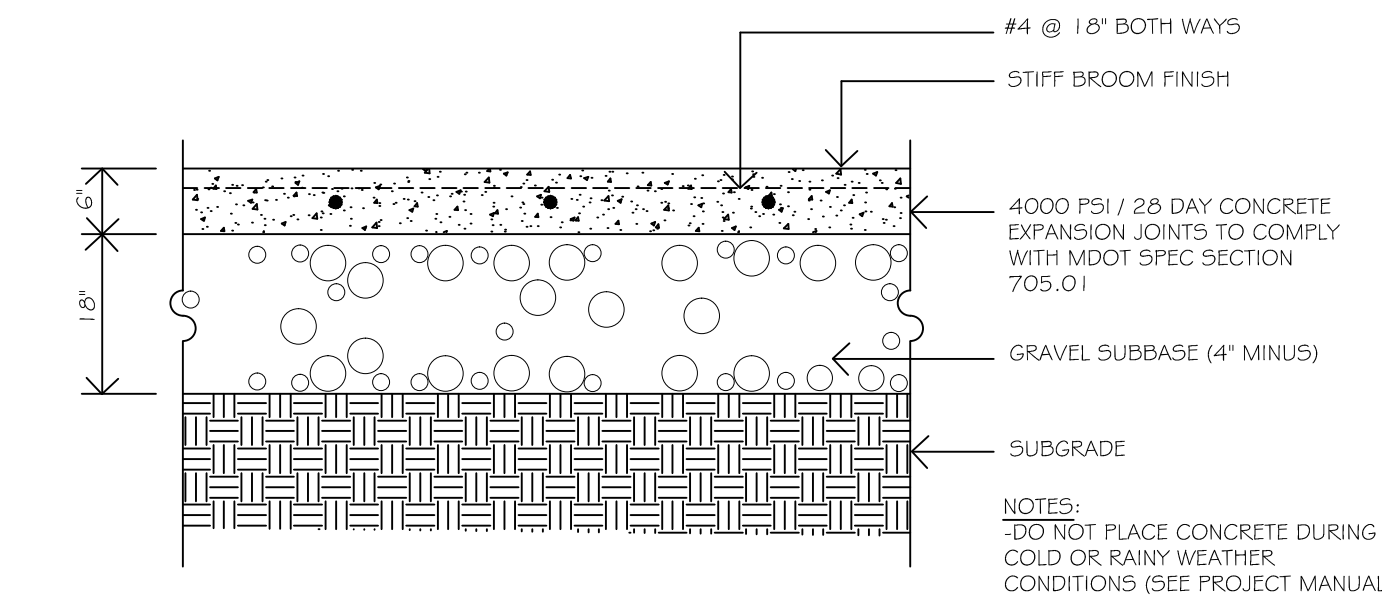
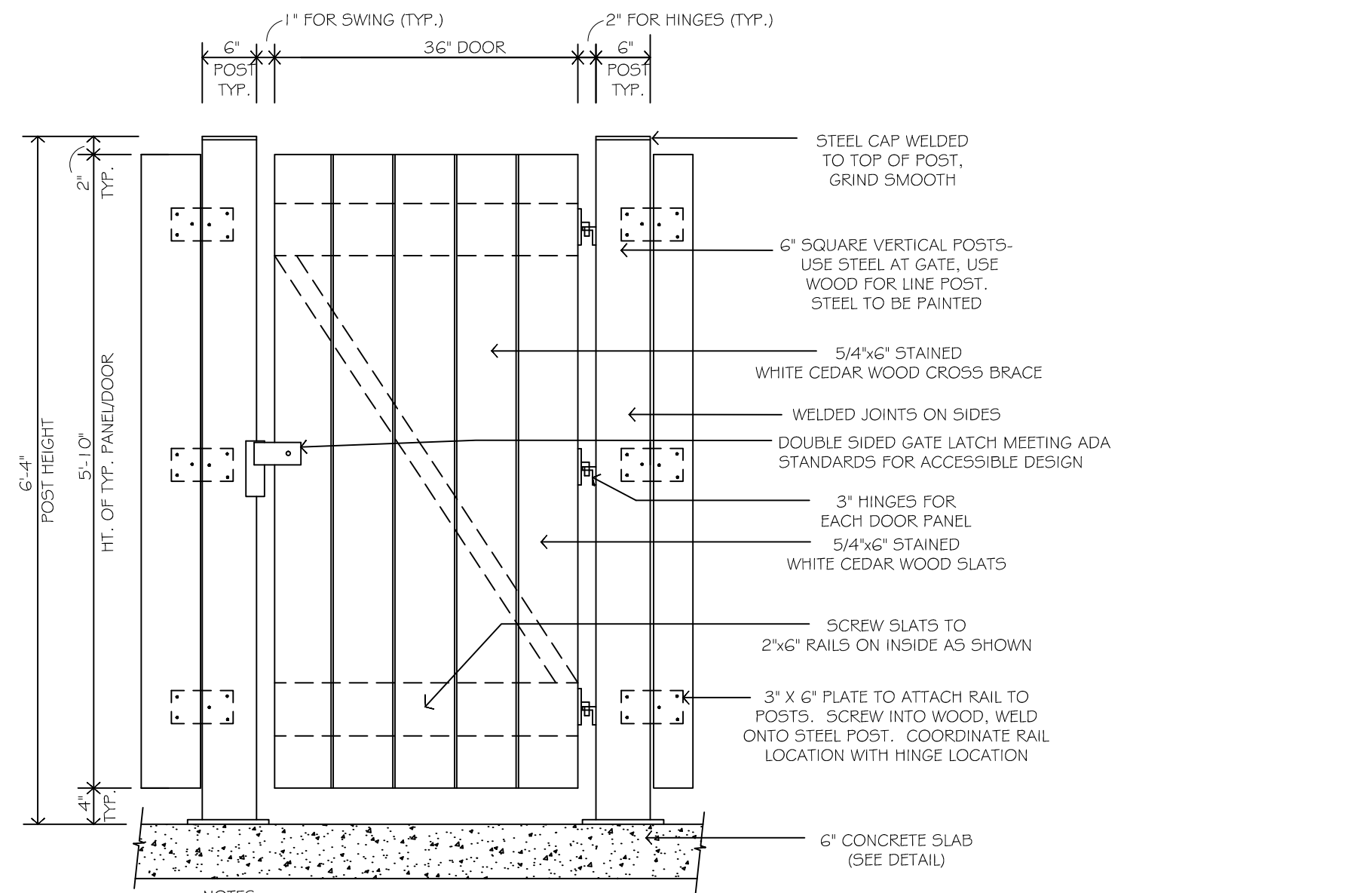


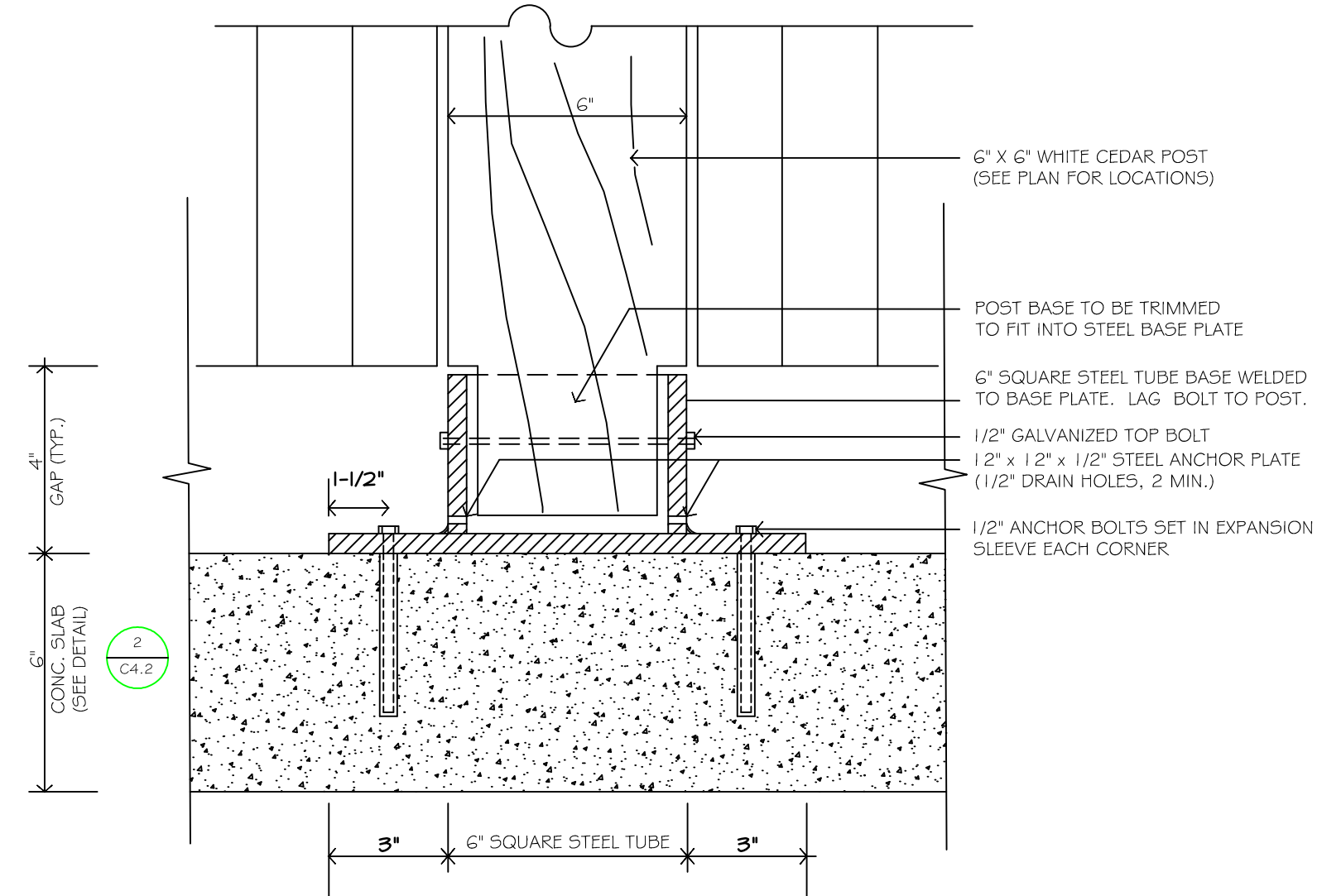
**1 DUMPSTER ENCLOSURE: FRONT AND SIDE ELEVATIONS**  
C4.2 NOT TO SCALE



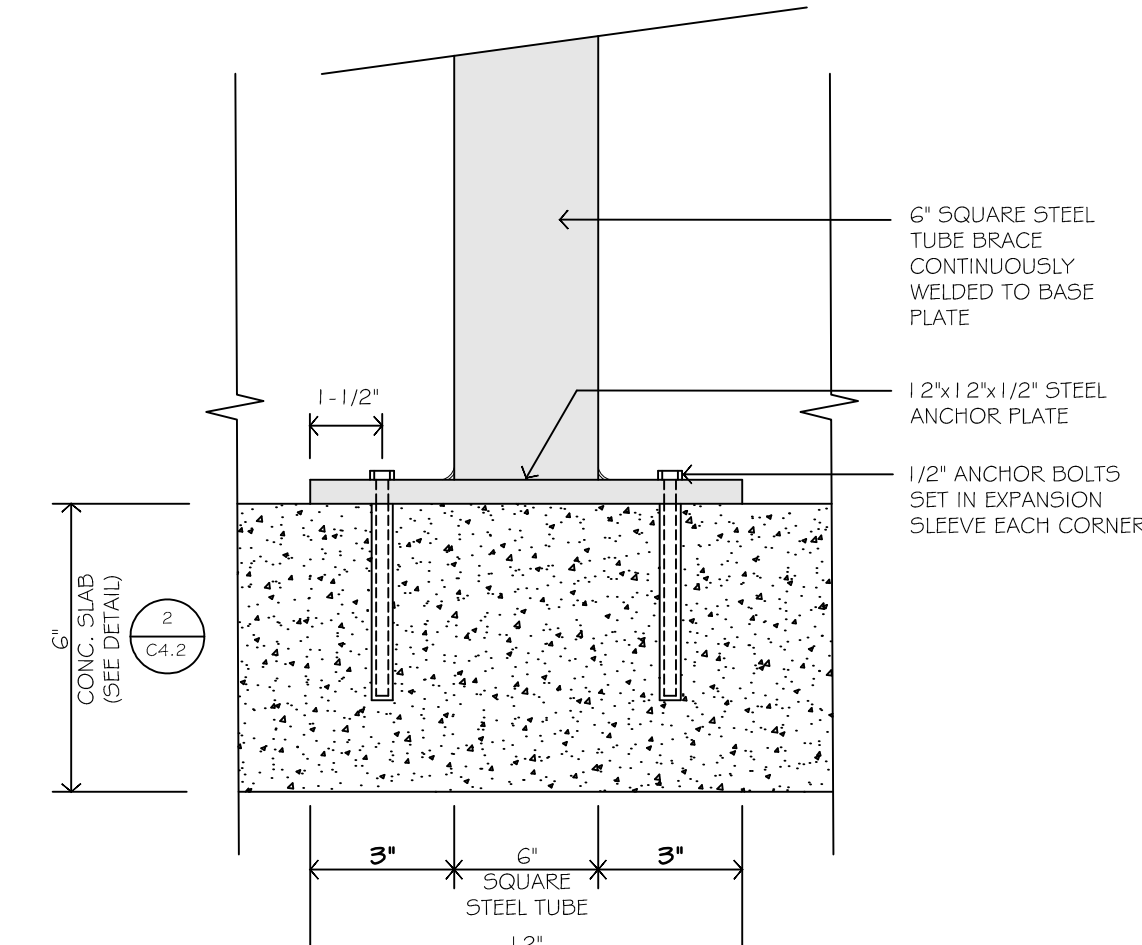
**2 CONCRETE PAD AT DUMPSTER PAD**  
C4.2 NOT TO SCALE



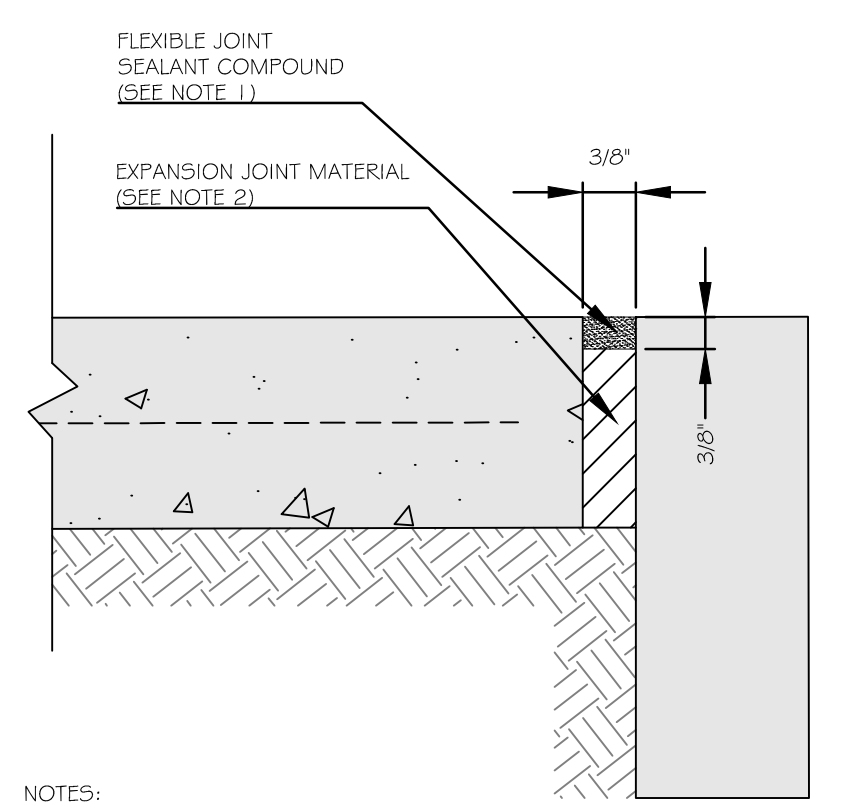
**3 DUMPSTER ENCLOSURE MAN-DOOR ELEVATION**  
C4.2 NOT TO SCALE



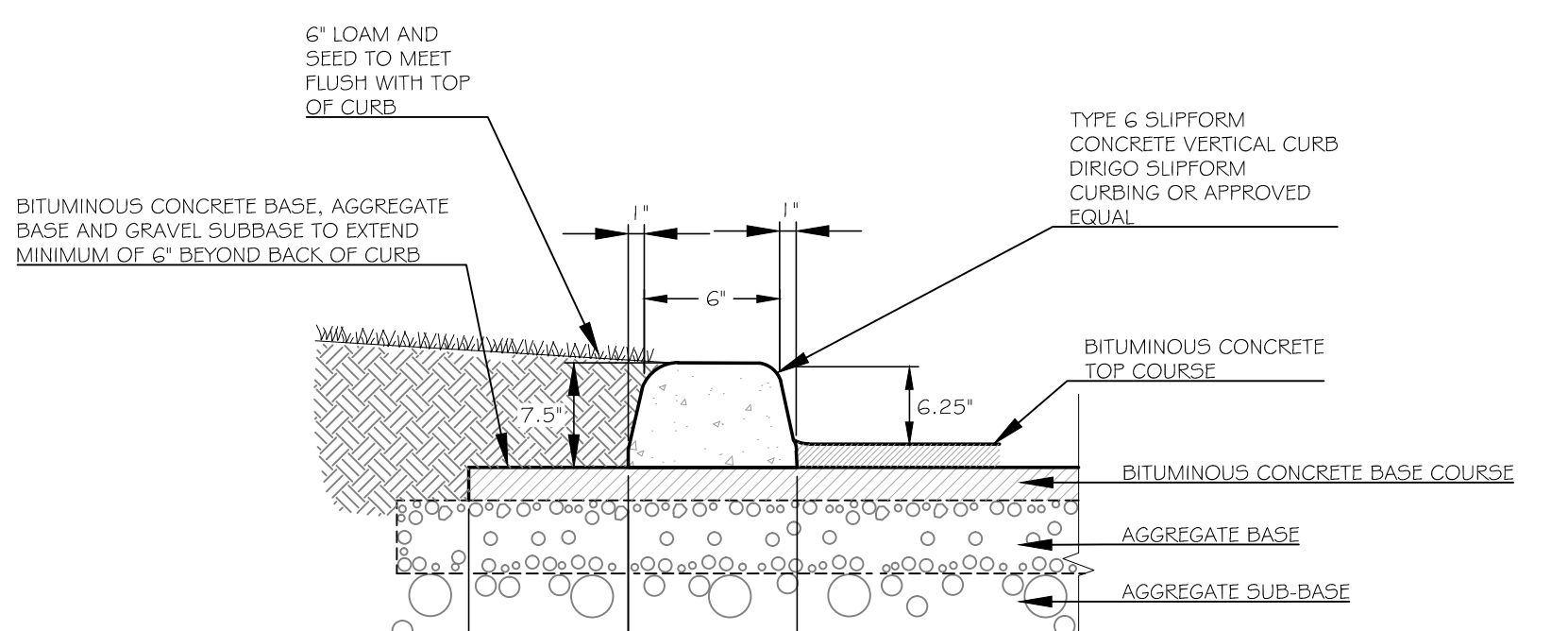
**4 BASE PLATE / WOOD POST DETAIL**  
C4.2 NOT TO SCALE



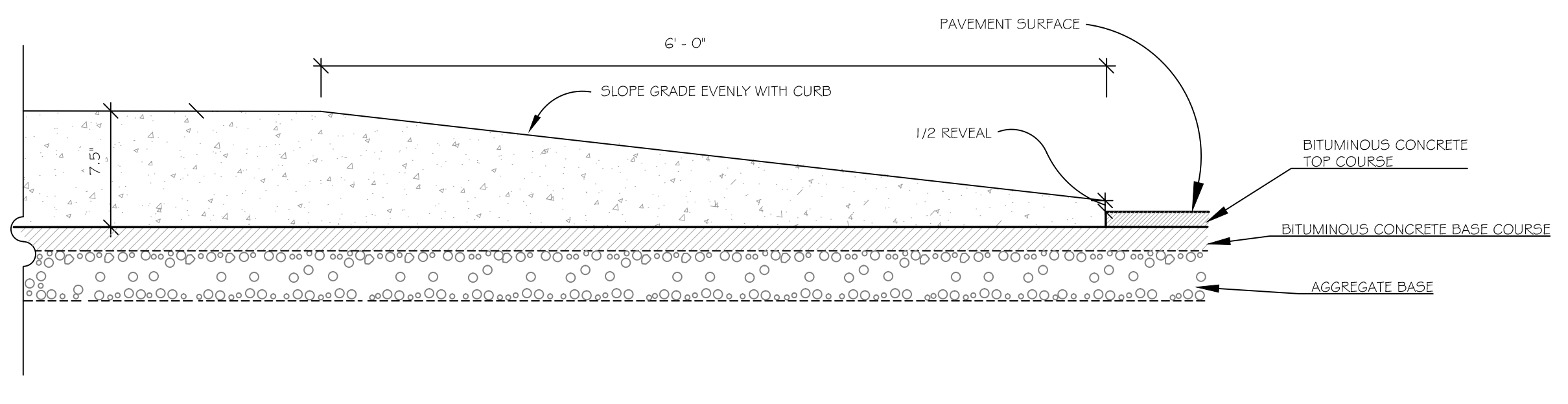
**5 BASE PLATE / STEEL POST DETAIL**  
C4.2 NOT TO SCALE



**6 EXPANSION JOINT DETAIL**  
C4.2 NOT TO SCALE



**7 VERTICAL CURB DETAIL (SLIPFORM CONCRETE OR BIT. CONCRETE)**  
C4.2 NOT TO SCALE



**8 CURB TIPDOWN DETAIL (SLIPFORM CONCRETE OR BIT. CONCRETE)**  
C4.2 NOT TO SCALE

**HOTEL REDEVELOPMENT**  
1210 Brighton Avenue  
Portland, Maine  
Portland Hotels, Inc.  
1200 Brighton Avenue  
Portland, Maine 04102

ISSUED FOR PERMITTING - NOT FOR CONSTRUCTION

Rev.	Date	Description	Drawn	Check
1	11/14/14	Submitted for Prelim. Level II Site Plan Application	SWC	WRW
2	11/18/14	Revised Cover Sheet and Zoning Summary	SWC	WRW
3	2/7/15	Revised Per City Staff Review Comments	SWC	WRW
4	3/6/15	Revised Per City Staff Review Comments	SWC	WRW

Sheet Title:  
**SITE DETAILS**

Job No.:	257	Sheet No.:	<b>C4.2</b>	
Date:	Nov. 14, 2014	Scale:		NTS
Drawn:	SWC	Checked:		WRW
Checked:	WRW			