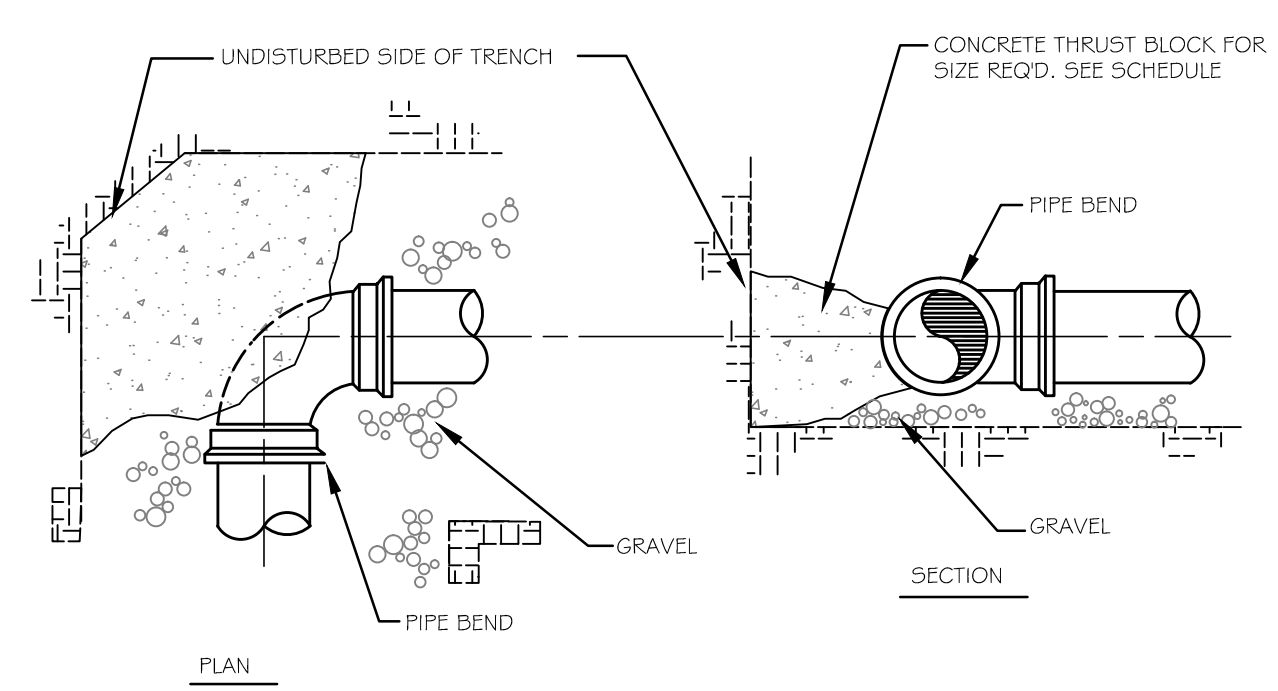


**THRUST BLOCK PLACEMENT AT TEE(S)**

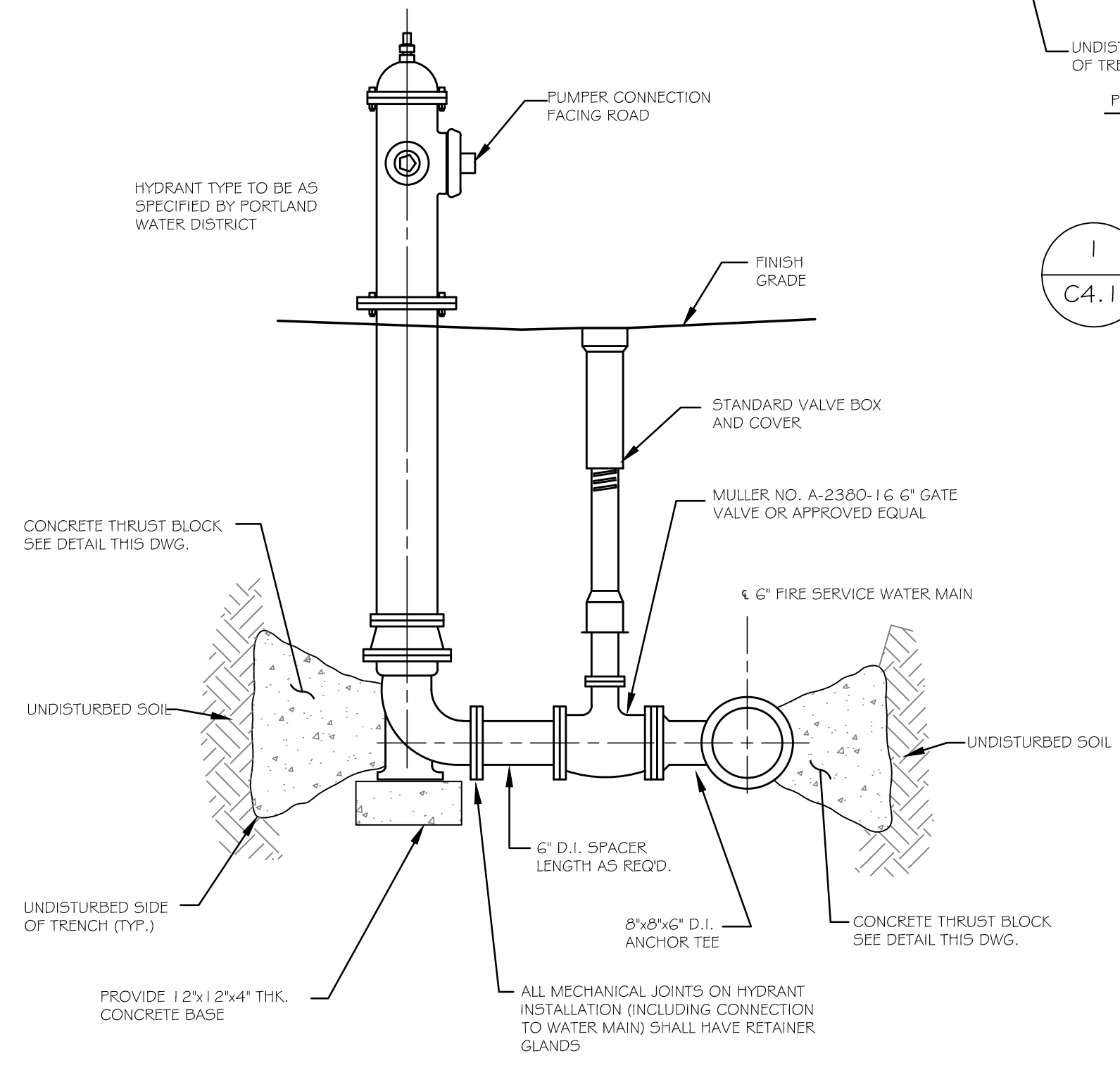


**THRUST BLOCK PLACEMENT AT BEND(S)**

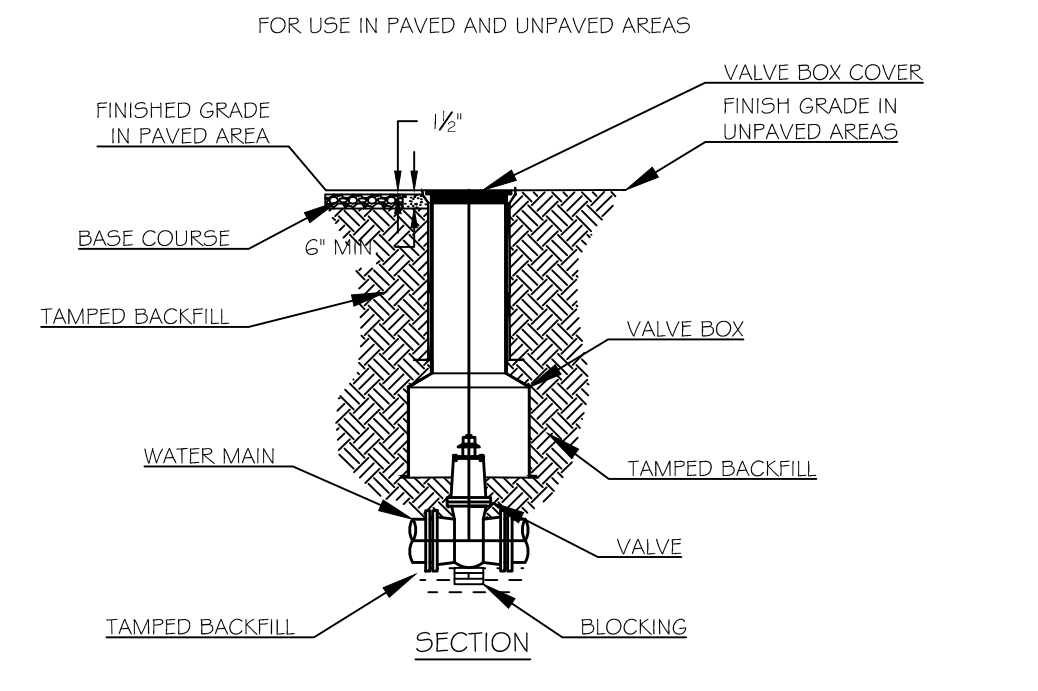
SIZE REQUIREMENTS FOR CONCRETE THRUST BLOCKS					
BEARING ON UNDISTURBED SOIL (SQUARE FT.)					
FITTINGS	90° BENDS	45° BENDS	TEES & PLUGS	HYDRANTS	
4"	2.0	1.0	1.0	N/A	
6"	3.0	2.0	2.0	6.0	
8"	5.0	3.0	4.0	N/A	

**THRUST BLOCK SCHEDULE**

**1 THRUST BLOCK DETAILS**  
C4.1 NOT TO SCALE

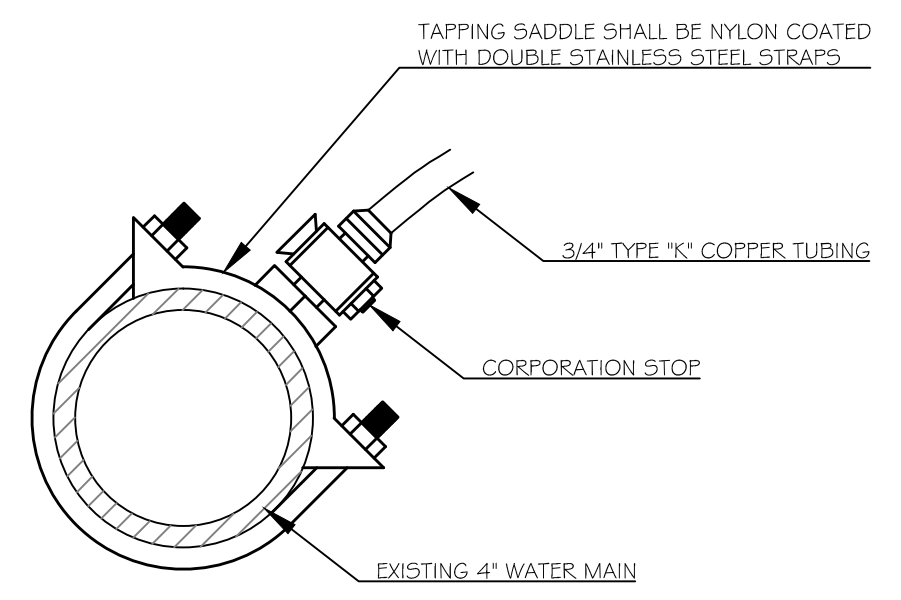


**2 HYDRANT DETAIL**  
C4.1 NOT TO SCALE



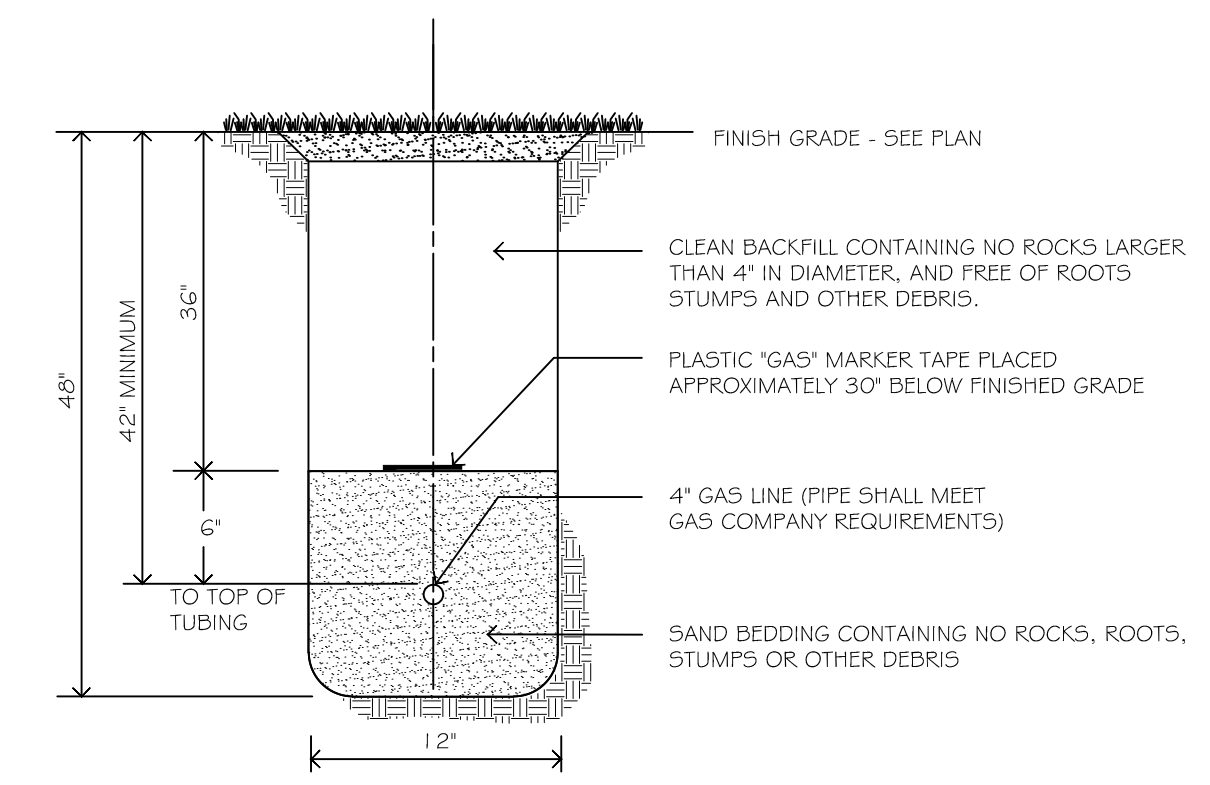
NOTES:  
1. ALL WORK TO CONFORM TO THE PORTLAND WATER DISTRICT STANDARDS AND REQUIREMENTS.  
2. D.I.P. MAY BE USED FOR VALVE BOX EXTENSIONS.  
3. VALVE BOX SHOULD NOT CONTACT WATER MAIN OR VALVE.  
4. CONCRETE PROTECTOR RING SHALL BE USED IN ALL UNPAVED AREAS.

**3 VALVE AND VALVE BOX INSTALLATION DETAIL**  
C4.1 NOT TO SCALE



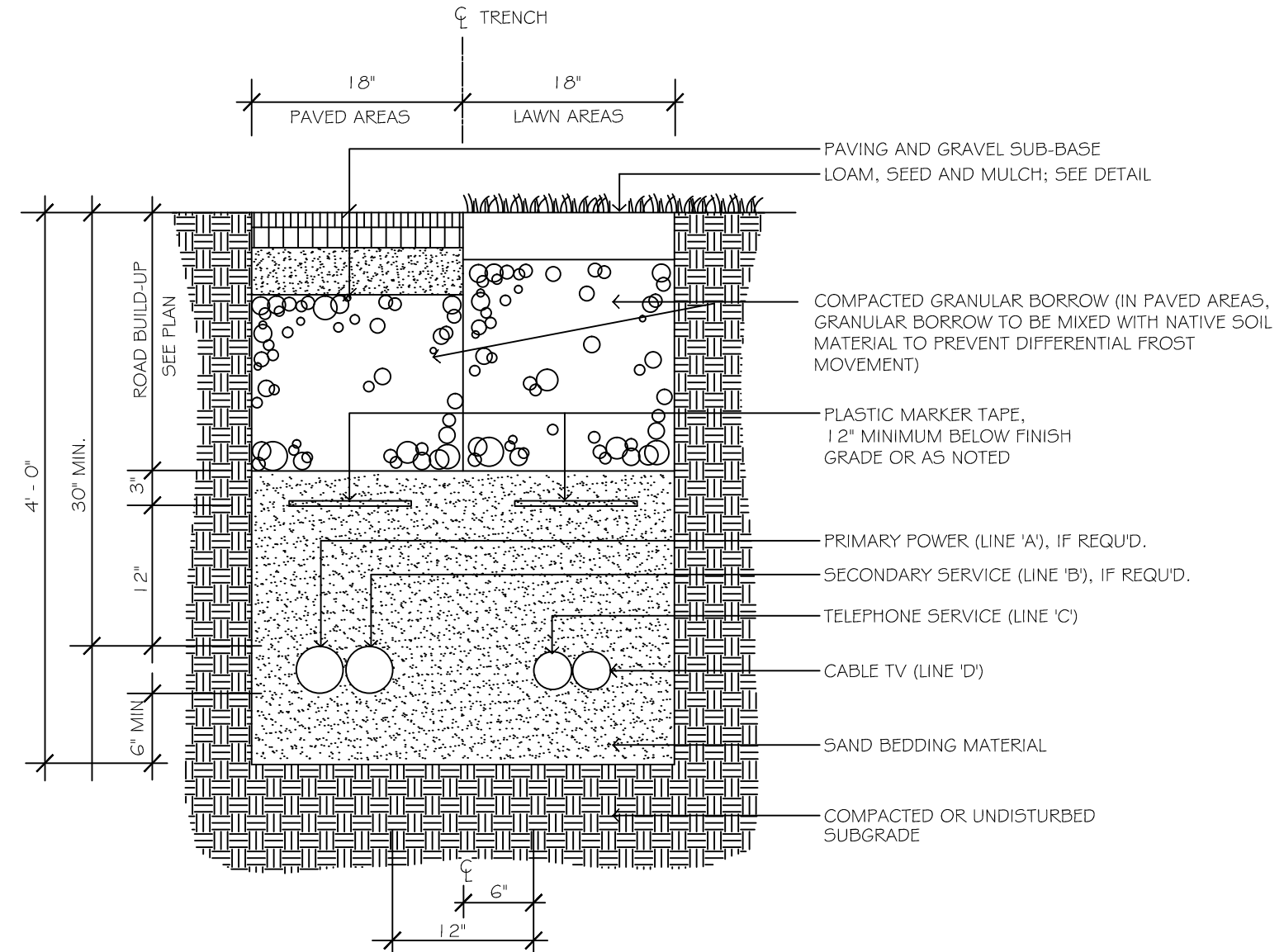
NOTES:  
ALL WORK TO CONFORM TO THE PORTLAND WATER DISTRICT STANDARDS AND REQUIREMENTS.

**4 STANDARD CORPORATION STOP DETAIL**  
C4.1 NOT TO SCALE



NOTE:  
1. INSTALLATION OF NATURAL GAS SERVICE LINE SHALL CONFORM TO ALL GAS COMPANY REQUIREMENTS.

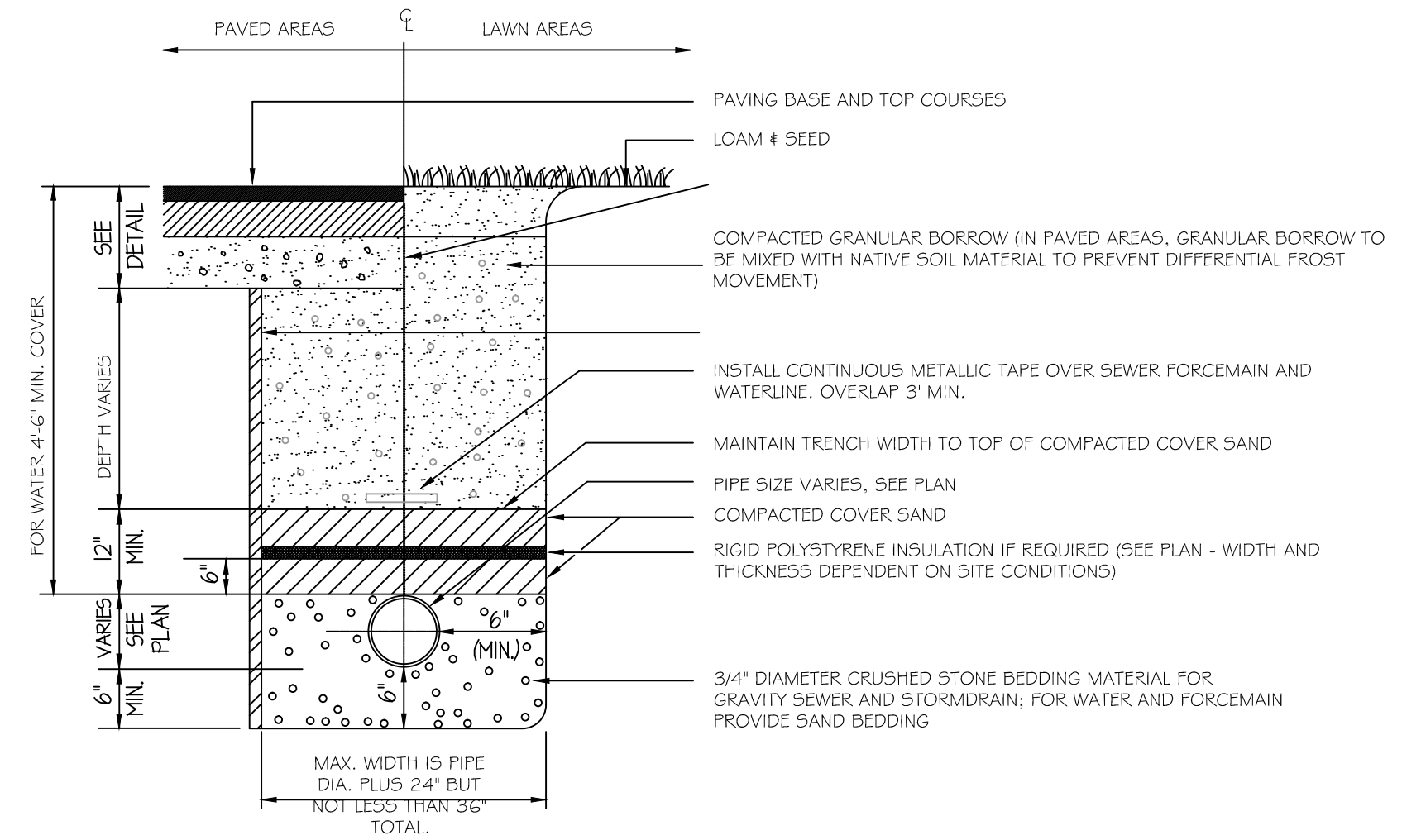
**5 NATURAL GAS SERVICE TRENCH SECTION**  
C4.1 NOT TO SCALE



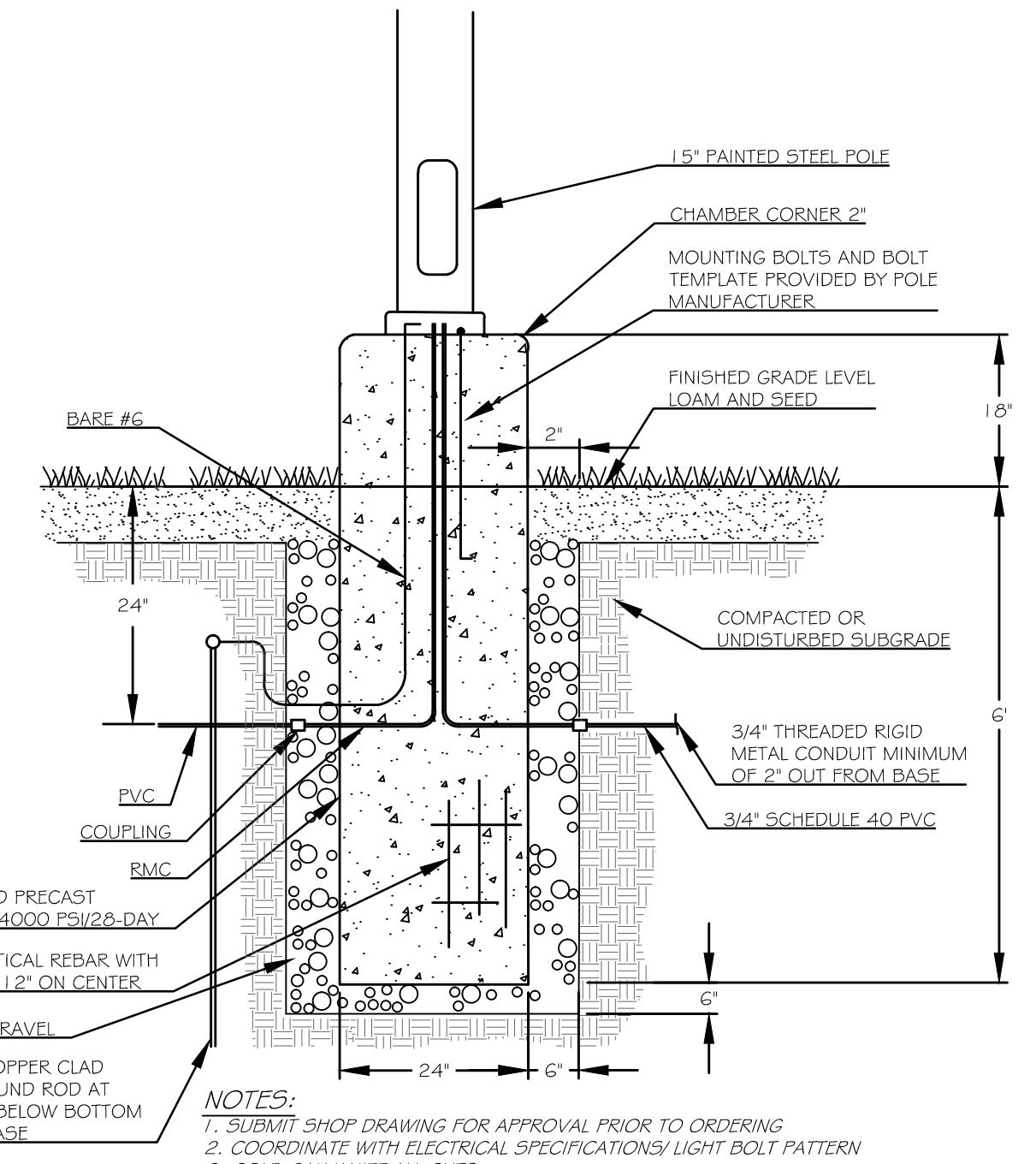
SERVICE	CONDUIT SIZE	CONDUIT TYPE	UTILITY
A	4"	SCHEDULE 40 P.V.C. ELECTRICAL GRADE	PRIMARY POWER
B	4"	SCHEDULE 40 P.V.C. ELECTRICAL GRADE	SECONDARY POWER
C	3"	SCHEDULE 40 P.V.C. ELECTRICAL GRADE	TELEPHONE
D	3"	SCHEDULE 40 P.V.C. ELECTRICAL GRADE	CATV

NOTES:  
1. ALL WORK SHALL COMPLY WITH THE RESPECTIVE UTILITY COMPANY STANDARDS.  
2. SEE UTILITIES PLANS FOR CONDUIT LOCATIONS.  
3. CONTRACTOR TO PROVIDE 1/4\"/>

**6 UNDERGROUND UTILITY TRENCH SECTION (MULTIPLE CONDUITS)**  
C4.1 NOT TO SCALE



**7 TYPICAL PIPE TRENCHING DETAIL**  
C4.1 NOT TO SCALE



NOTES:  
1. SUBMIT SHOP DRAWING FOR APPROVAL PRIOR TO ORDERING.  
2. COORDINATE WITH ELECTRICAL SPECIFICATIONS LIGHT BOLT PATTERN.  
3. COLD GALVANIZE ALL CUTS.

**8 CONCRETE POLE BASE DETAIL**  
C4.1 NOT TO SCALE

**HOTEL REDEVELOPMENT**  
1210 Brighton Avenue  
Portland, Maine

Portland Hotels, Inc.  
1200 Brighton Avenue  
Portland, Maine 04102

ISSUED FOR PERMITTING - NOT FOR CONSTRUCTION

Rev.	Date	Description	Drawn	Check
1	11/14/14	Submitted for Prelim. Level II Site Plan Application	SWC	WRW
2	11/18/14	Revised Cover Sheet and Zoning Summary	SWC	WRW
3	2/7/15	Revised Per City Staff Review Comments	SWC	WRW
4	3/6/15	Revised Per City Staff Review Comments	SWC	WRW

Sheet Title:  
**SITE DETAILS**

Job No.:	257	Sheet No.:	C4.1
Date:	Nov. 14, 2014	Scale:	NTS
Drawn:	SWC	Checked:	WRW