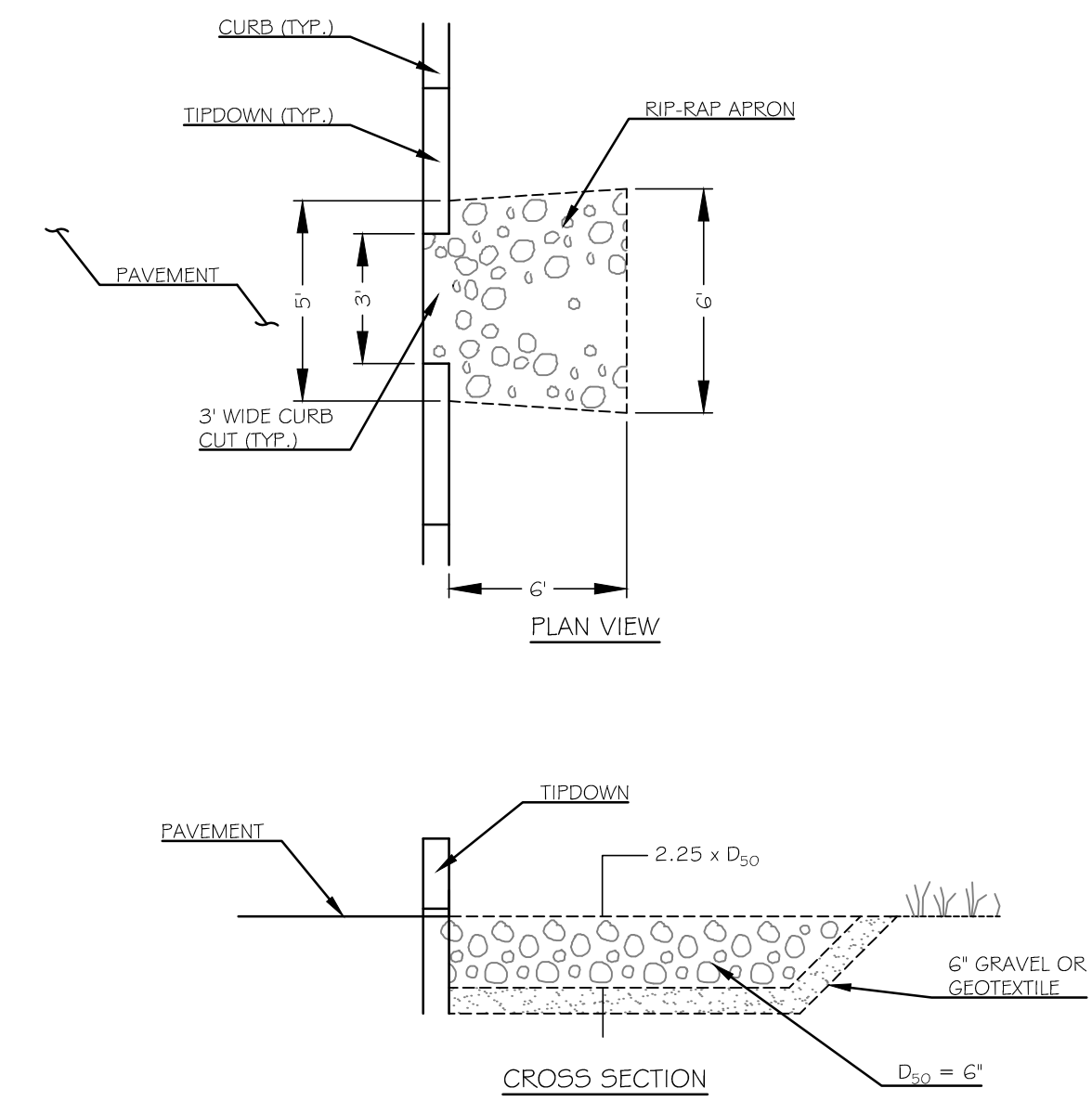


NOTES:

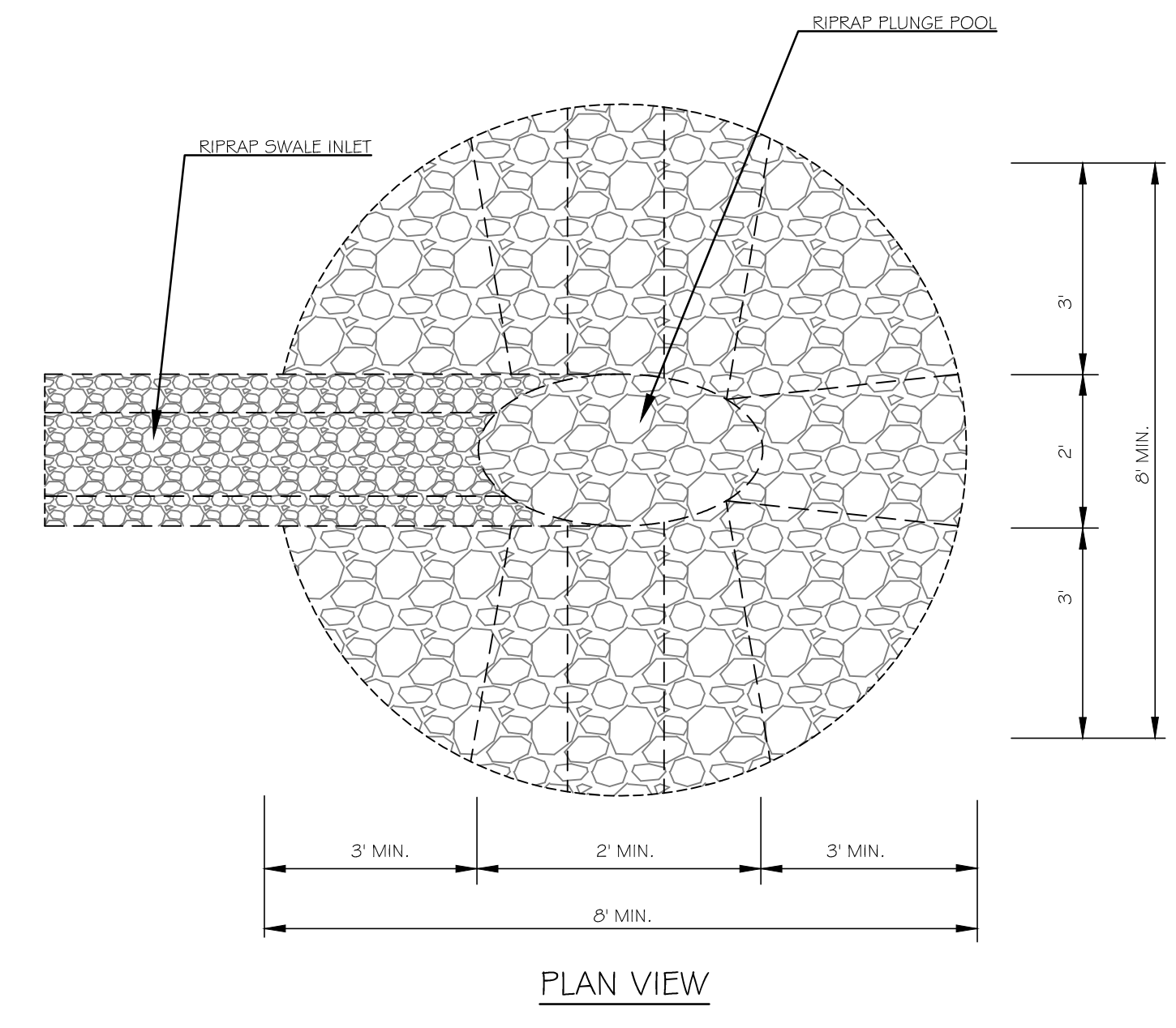
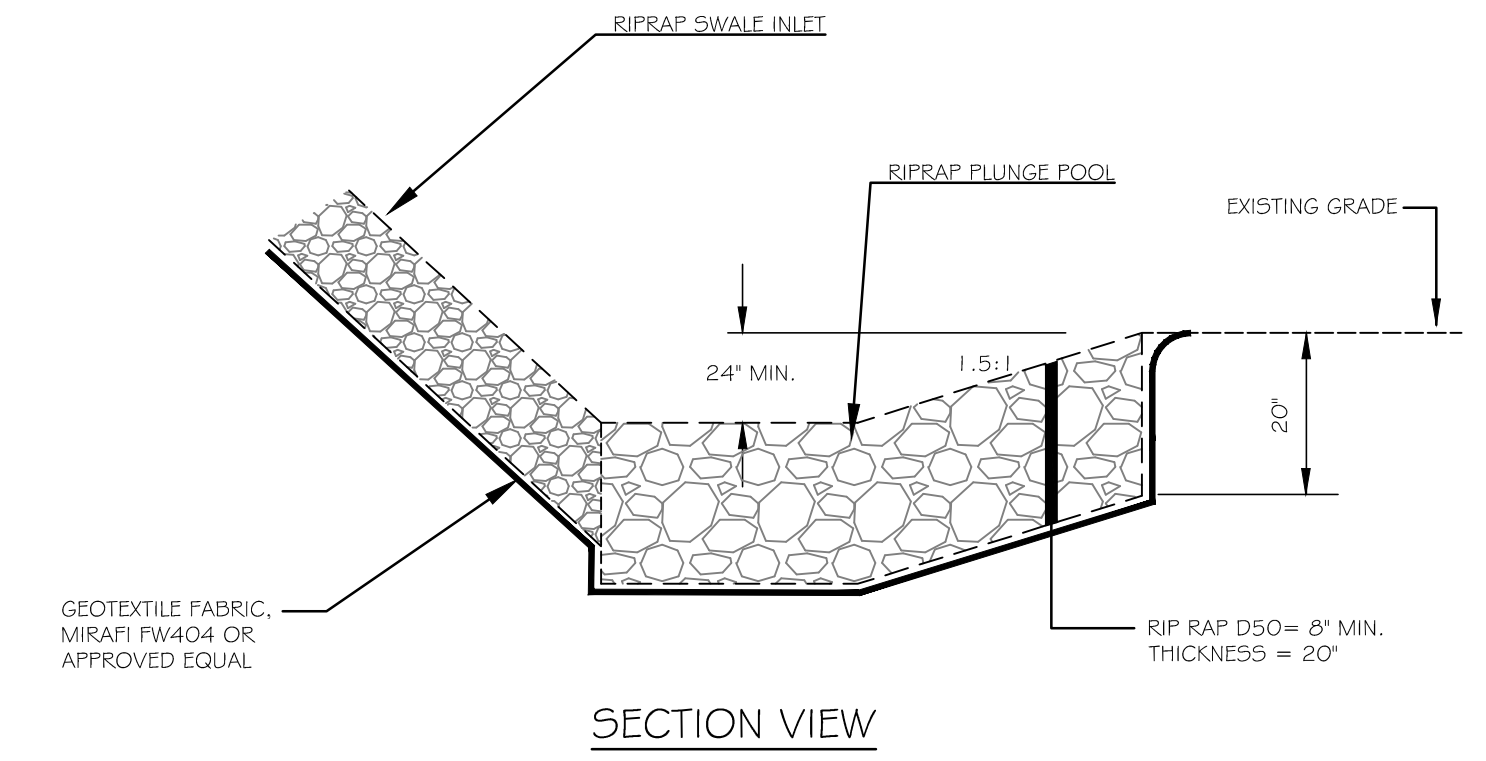
- USE D_{50} NOTED ON TABLE UNLESS OTHERWISE SPECIFIED ON PLANS.
- UNDERLAY RIP-RAP WITH 6" OF GRAVEL OR GEOTEXTILE
- USE WIDTHS NOTED ABOVE OR CONFORM TO NATURAL CHANNEL OR TOPOGRAPHY.

D	L	W	D_{50}
6"	2.25'	2'	6"
12"	4.5'	4'	8"
15"	5.63'	5'	8"
18"	6.75'	6'	8"

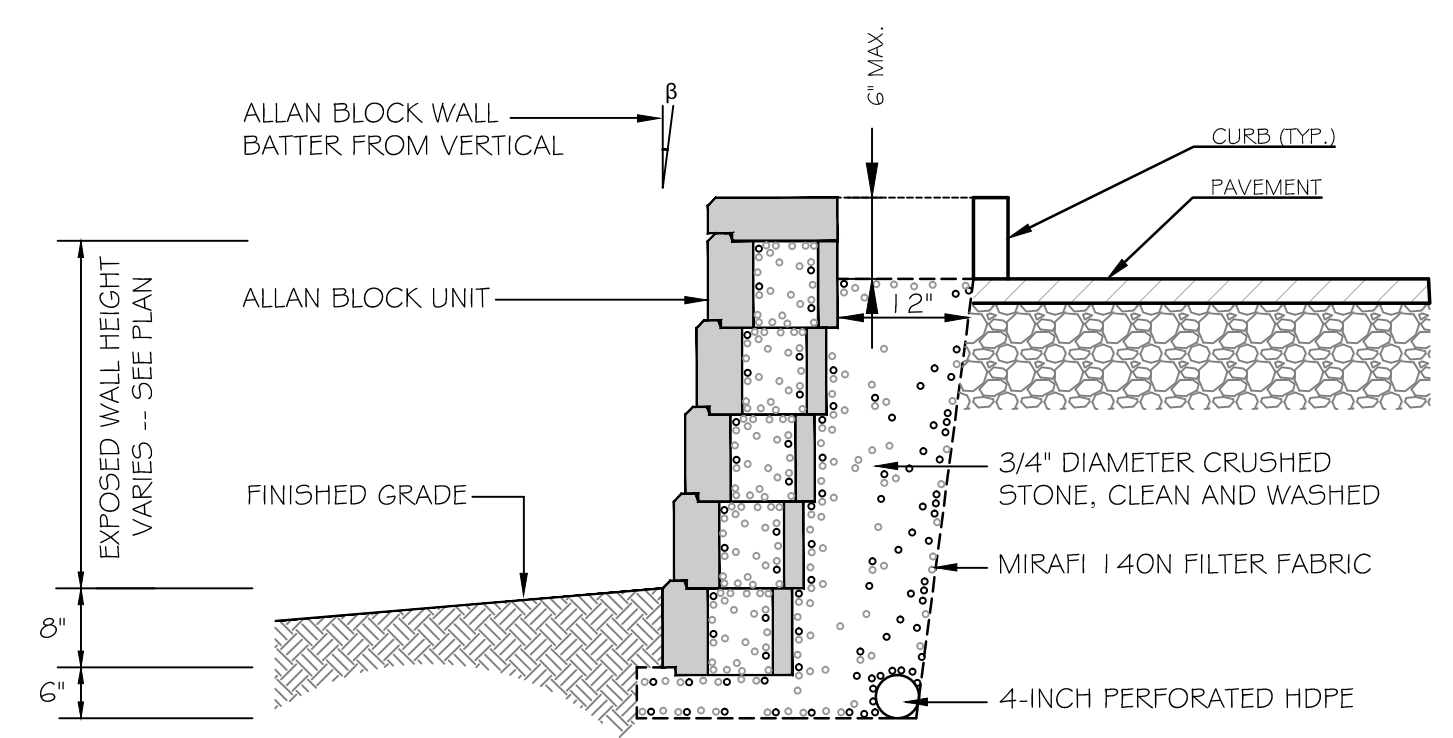
1 RIP-RAP APRON (PIPE OUTLET)
C4.5 NOT TO SCALE



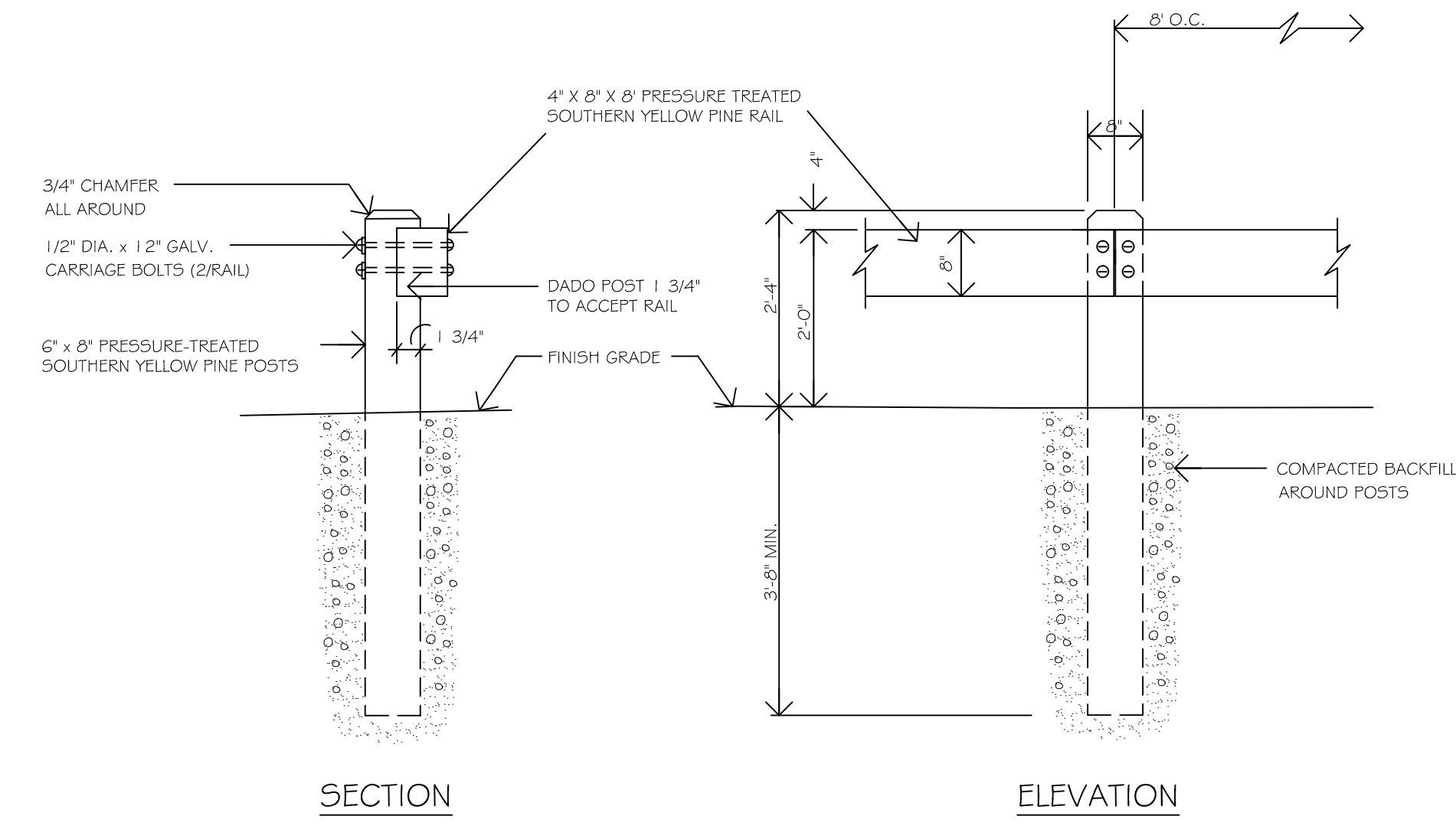
2 RIP-RAP APRON (CURB CUT)
C4.5 NOT TO SCALE



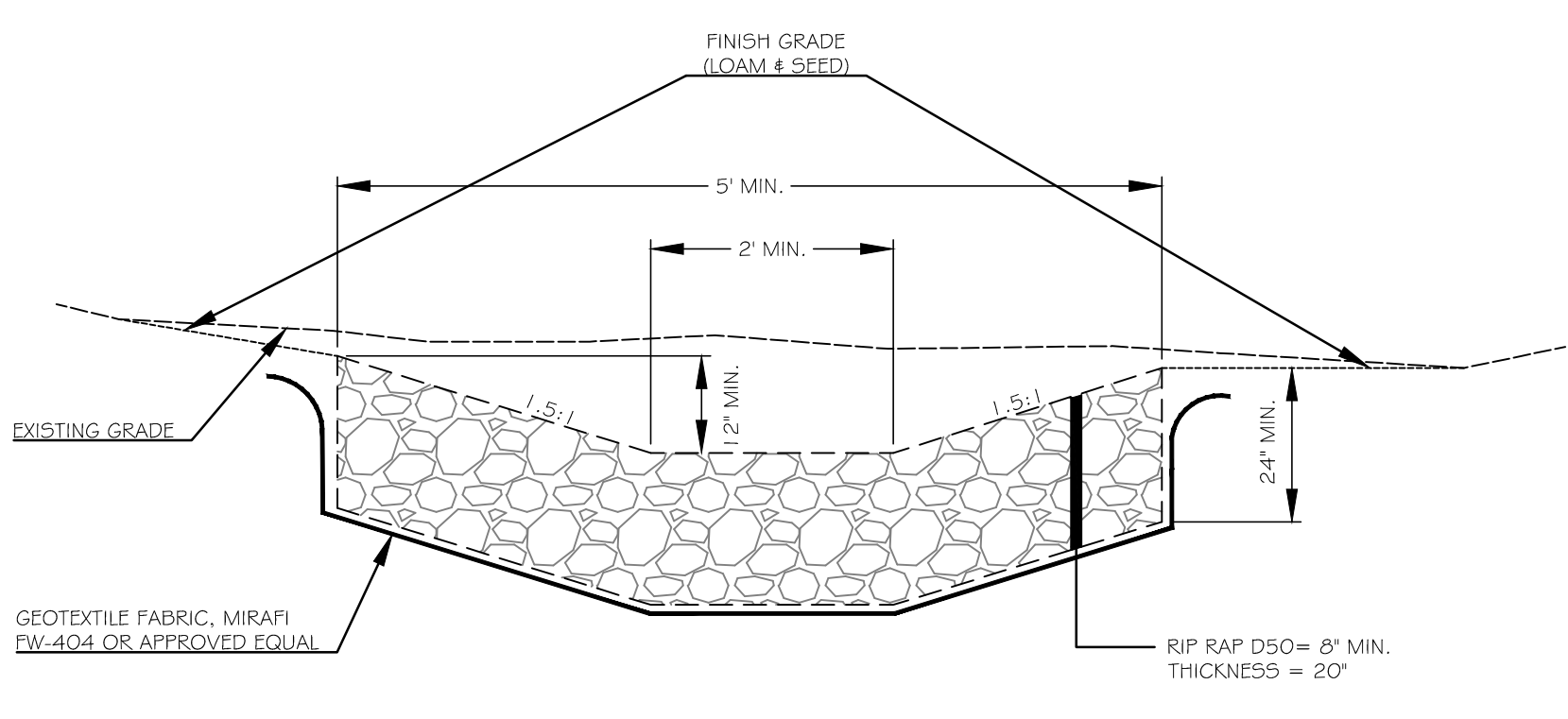
5 RIP-RAP PLUNGE POOL DETAIL
C4.5 NOT TO SCALE



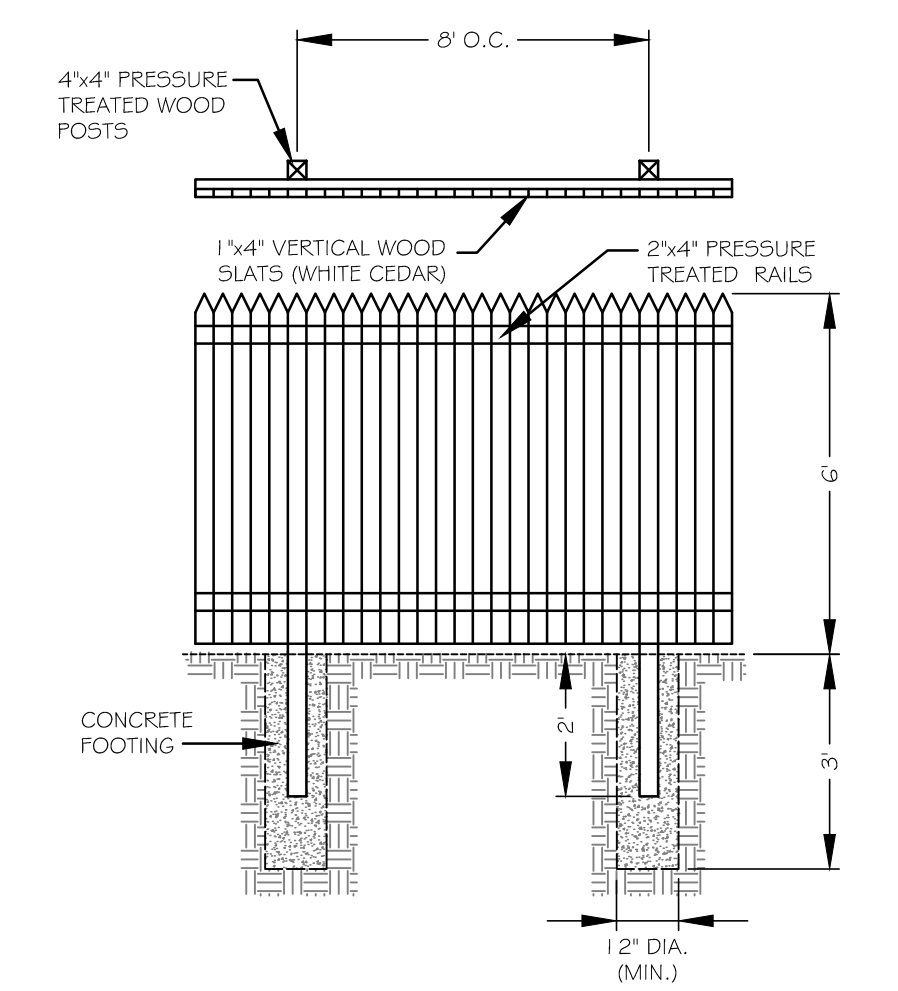
3 ALLAN BLOCK RETAINING WALL
C4.5 NOT TO SCALE



4 WOODEN GUARD RAIL SECTION
C4.5 NOT TO SCALE



6 RIPRAP SWALE DETAIL
C4.5 NOT TO SCALE



7 WOOD FENCE DETAIL
C4.5 NOT TO SCALE

HOTEL REDEVELOPMENT
1210 Brighton Avenue
Portland, Maine

Portland Hotels, Inc.
1200 Brighton Avenue
Portland, Maine 04102

PRELIMINARY PLAN
ISSUED FOR PERMITTING - NOT FOR CONSTRUCTION

Rev.	Date	Description	Drawn	Check
1	11/14/14	Submitted for Prelim. Level II Site Plan Application	SWC	WRW
2	11/18/14	Revised Cover Sheet and Zoning Summary	SWC	WRW
3	2/7/15	Revised Per City Staff Review Comments	SWC	WRW

Sheet Title:
SITE DETAILS

Job No.:	257	Sheet No.:	C4.5	
Date:	Nov. 14, 2014	Scale:		NTS
Drawn:	SWC	Checked:		WRW
Checked:	WRW			