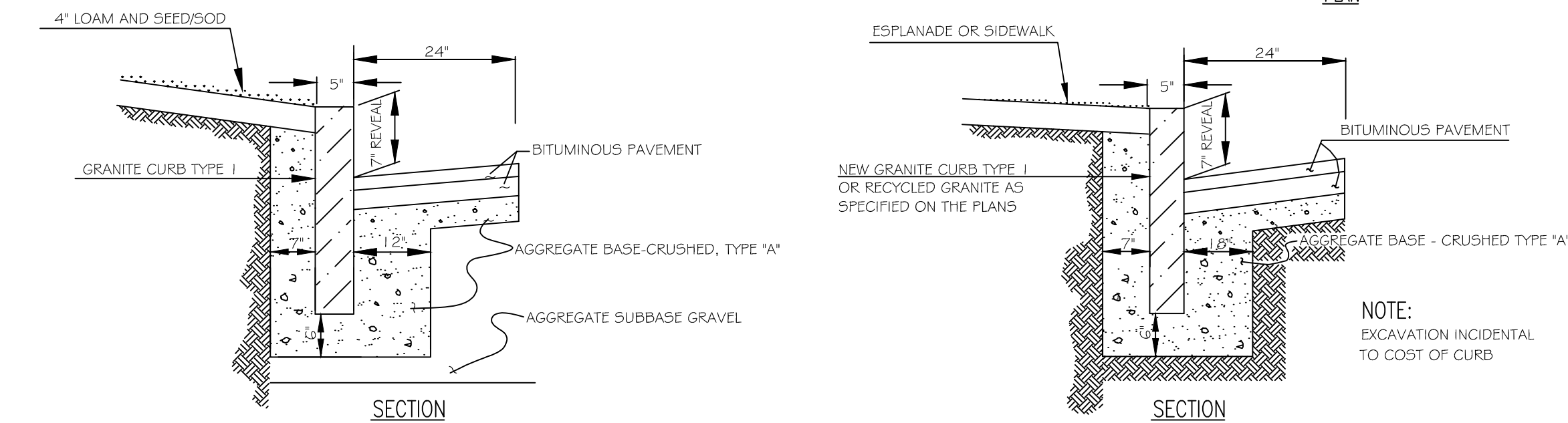


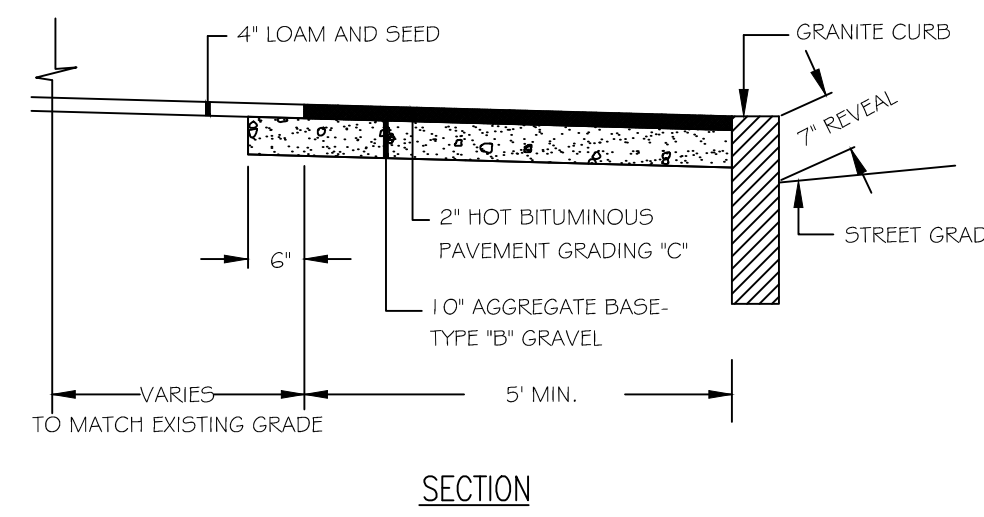
TYPICAL TIPDOWN CURB INSTALLATION  
NOT TO SCALE



INSTALLATION OF CURB  
NOT TO SCALE

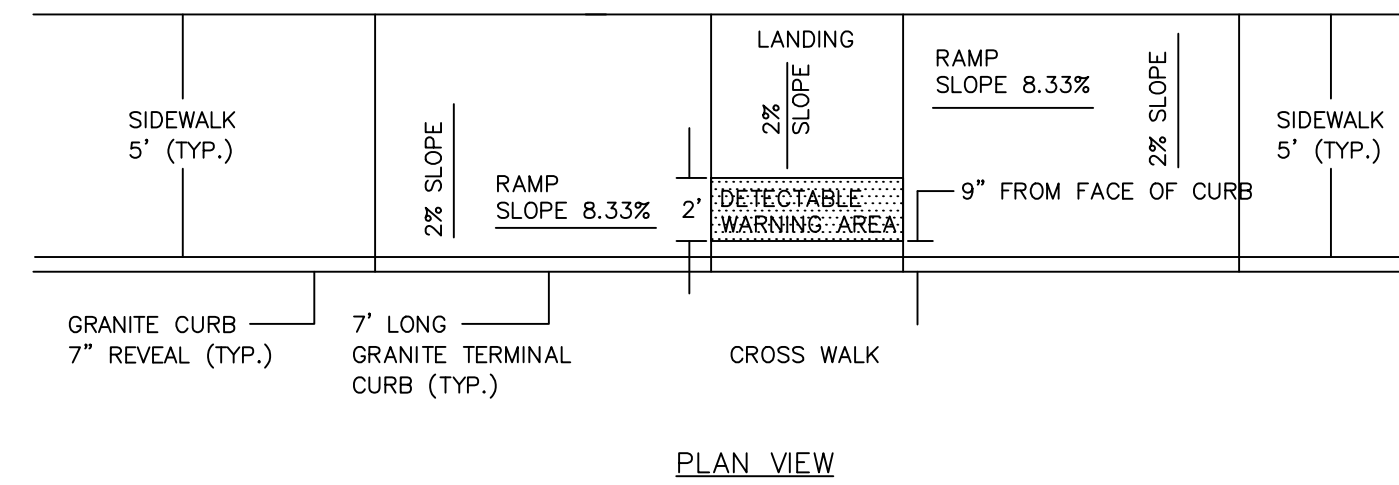
CURB REPLACEMENT DETAIL  
NOT TO SCALE

TYPICAL INSTALLATION OF CURB  
NOT TO SCALE



BITUMINOUS SIDEWALK DETAIL - NO ESPLANADE  
NOT TO SCALE

NOTES:  
ALL RAMP SHALL COMPLY WITH ADA STANDARDS.  
GRANITE CURB ADJACENT TO LANDING SHALL BE FLUSH WITH STREET.  
SIDEWALK MATERIAL PER CITY SIDEWALK MATERIAL POLICY.

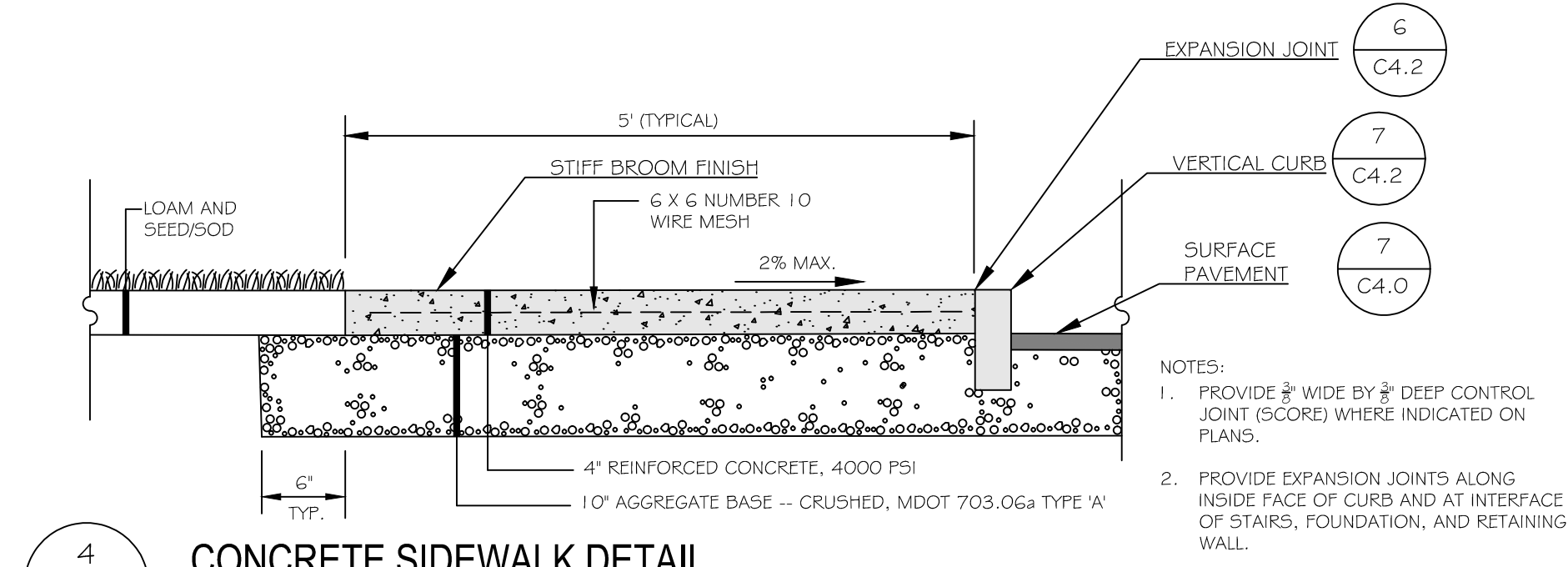


PARALLEL SIDEWALK RAMP LAYOUT FOR NARROW SIDEWALK WITH NO ESPLANADE  
NOT TO SCALE

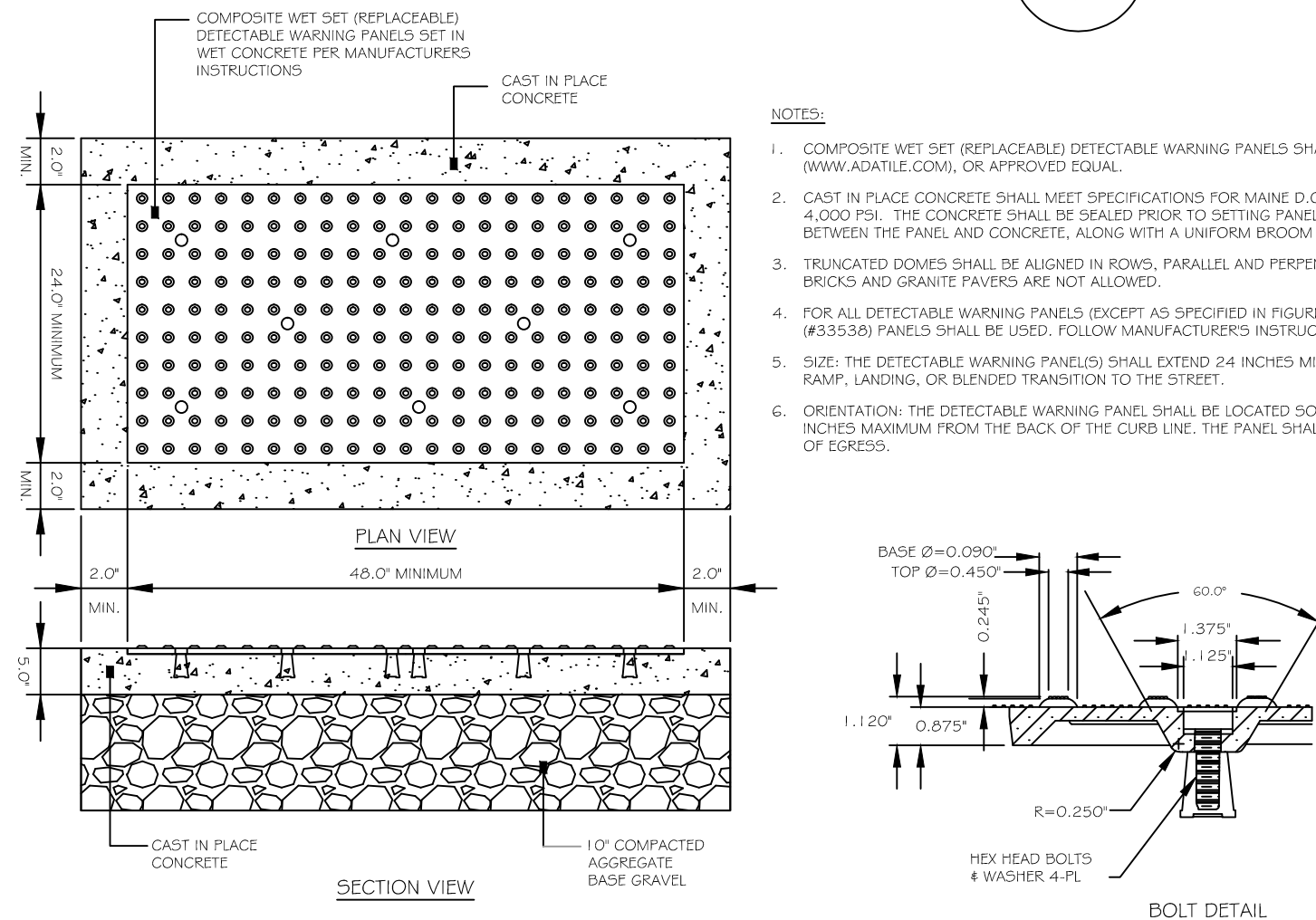
1 GRANITE CURB INSTALLATION DETAIL (BRIGHTON AVE R.O.W.)  
C4.3 NOT TO SCALE

2 SIDEWALK RECONSTRUCTION (BRIGHTON AVE)  
C4.3 NOT TO SCALE

3 CURB RAMP AT CROSSWALK DETAIL  
C4.3 NOT TO SCALE



4 CONCRETE SIDEWALK DETAIL  
C4.3 NOT TO SCALE

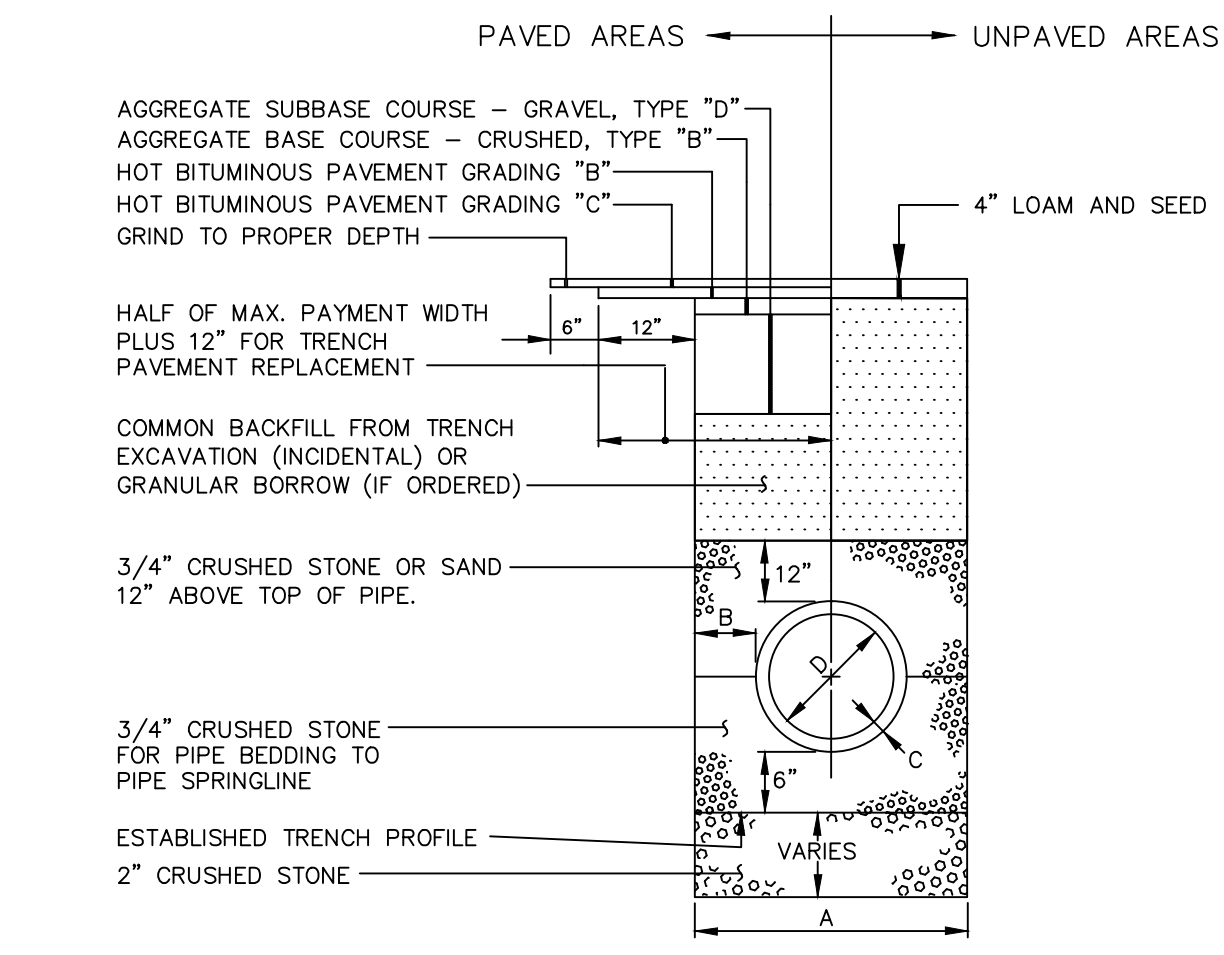


5 SIDEWALK RAMP DETECTABLE WARNING PANEL  
C4.3 NOT TO SCALE

NOTES:  
DEPTH OF BITUMINOUS PAVEMENT AND AGGREGATE COURSES SHALL BE DETERMINED BY STREET CLASSIFICATION.  
ANY ALTERNATE TRENCHING OR PAYMENT METHODS SHALL BE APPROVED IN ADVANCE BY THE CITY OF PORTLAND, DEPARTMENT OF PUBLIC SERVICES.

- NOTES:
- ALTERNATIVE CONSTRUCTION METHODS OR PAYMENT METHODS SHALL BE APPROVED IN ADVANCE BY THE CITY. IN PAVED AREAS, DEPTHS OF GRAVEL AND HOT MIX ASPHALT PAVEMENT SHALL MATCH THE GREATER OF EXISTING CONDITIONS OR THE REQUIREMENTS FOR THE CORRESPONDING STREET CLASSIFICATION.
  - DIMENSION B SHALL BE SUFFICIENT TO ALLOW CRUSHED STONE BEDDING TO BE PLACED AND COMPACTED UNDER THE HAUNCHES OF THE PIPE; BUT IN ALL CASES DIMENSION B SHALL BE AT LEAST 9\"
  - DIMENSION A IS THE MAXIMUM WIDTH ALLOWED FOR CALCULATING PAY QUANTITIES UNDER GRANULAR BORROW, CRUSHED STONE, STRUCTURAL EARTH EXCAVATION, AND STRUCTURAL ROCK EXCAVATION. DIMENSION A SHALL BE BASED ON PIPE DIAMETER D, AS SET FORTH IN THE FOLLOWING TABLE.

PIPE DIAMETER, D (INCHES)	MAX. TRENCH WIDTH, A (FEET)
4	4.0
6	4.0
8	4.0
10	4.0
12	5.0
15	5.0
18	5.0
21	5.0
24	6.0
27	6.0
30	6.0
36	6.0
42	7.0
48	7.0



TYPICAL PIPE TRENCH INSTALLATION  
NOT TO SCALE

TYPICAL PIPE INSTALLATION - NOTES  
NOT TO SCALE

6 PIPE TRENCH DETAIL (BRIGHTON AVE R.O.W.)  
C4.3 NOT TO SCALE

HOTEL REDEVELOPMENT  
1210 Brighton Avenue  
Portland, Maine

Portland Hotels, Inc.  
1200 Brighton Avenue  
Portland, Maine 04102

PRELIMINARY PLAN  
ISSUED FOR PERMITTING - NOT FOR CONSTRUCTION

Rev.	Date	Description	Drawn	Check
1	11/14/14	Submitted for Prelim. Level II Site Plan Application	SWC	WRW
2	11/18/14	Revised Cover Sheet and Zoning Summary	SWC	WRW
3	2/17/15	Revised Per City Staff Review Comments	SWC	WRW

Sheet Title:  
**SITE DETAILS**

Job No.:	257	Sheet No.:	<b>C4.3</b>	
Date:	Nov. 14, 2014	Scale:		NTS
Drawn:	SWC	Checked:		WRW
Checked:	WRW			