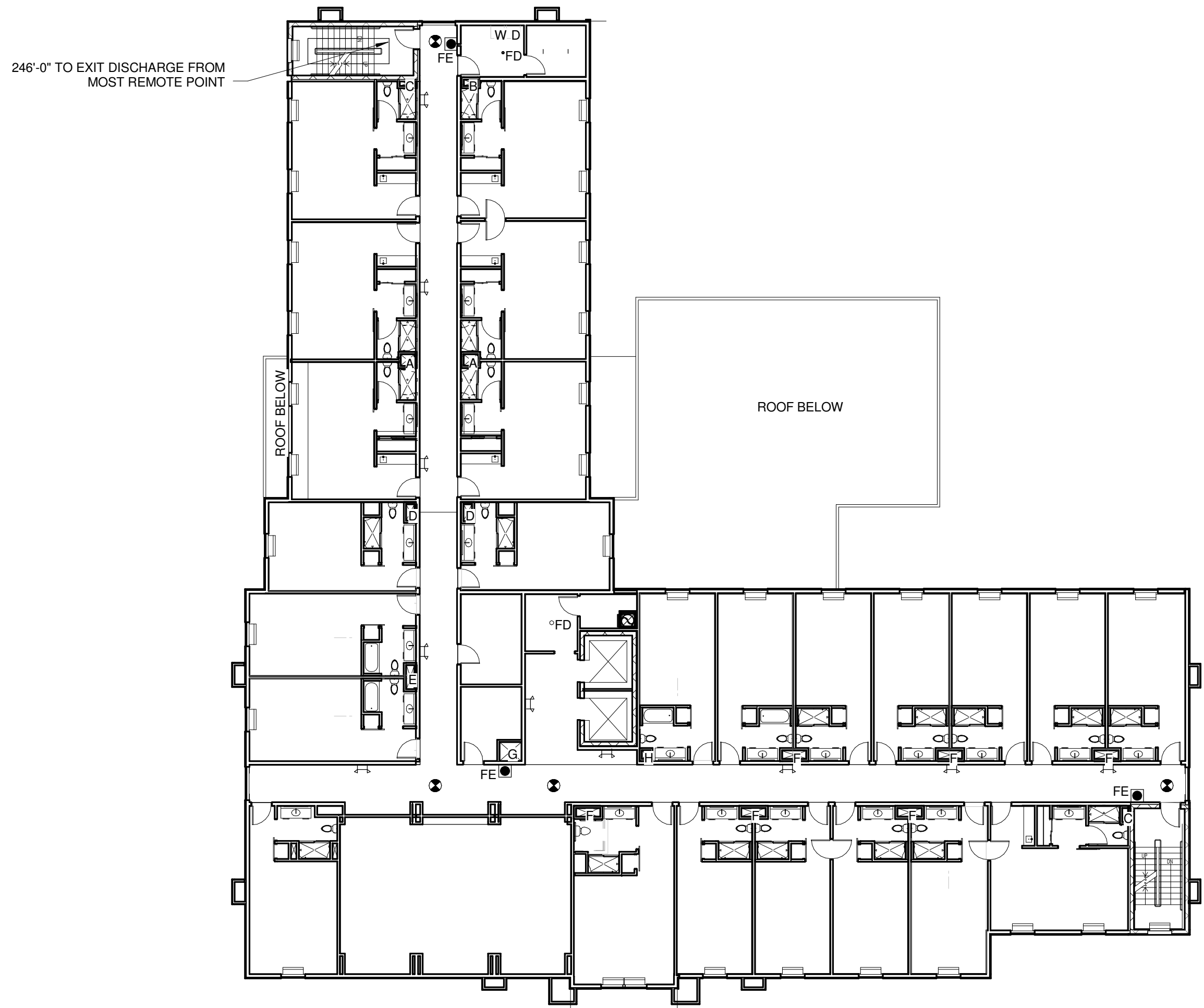
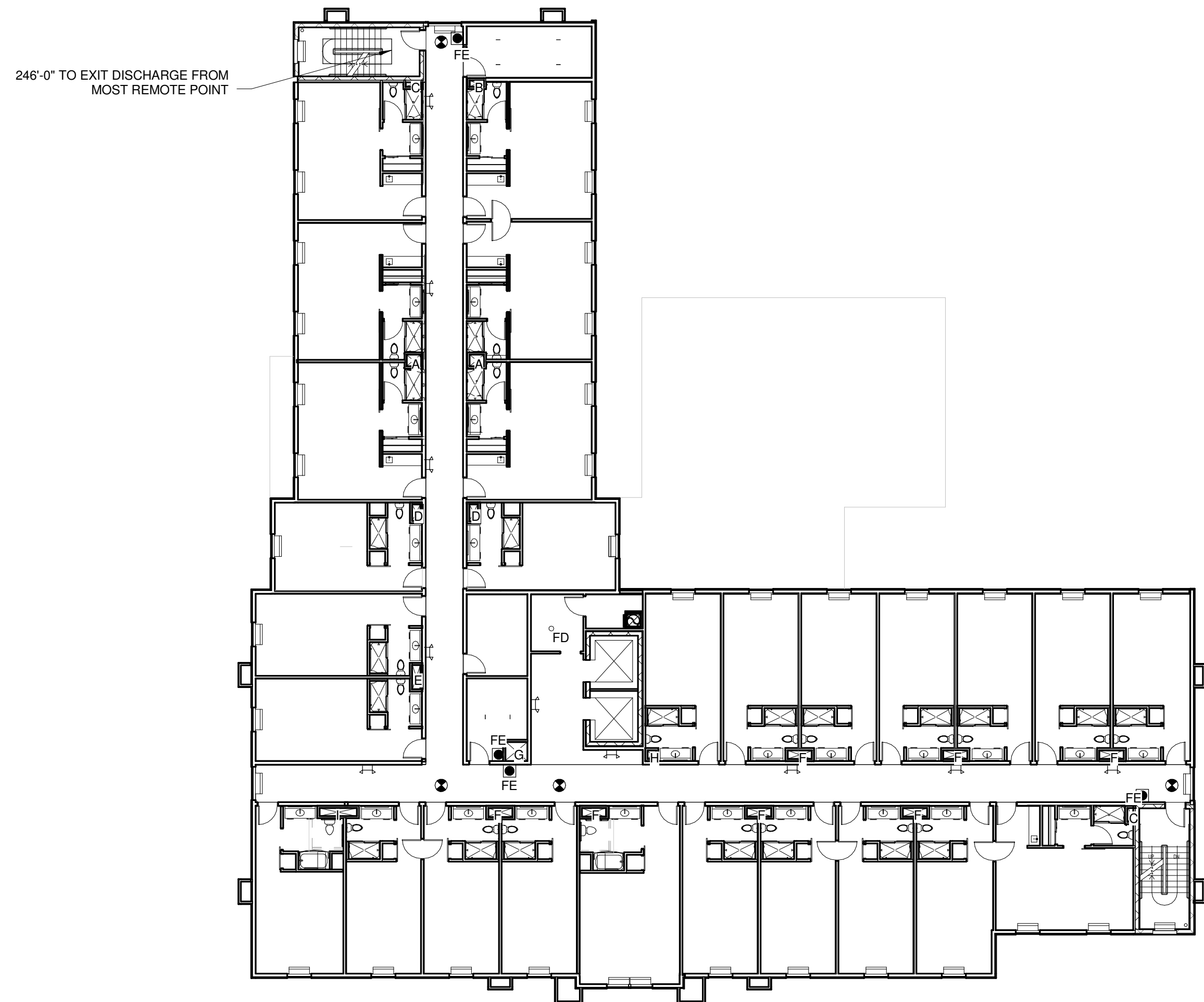


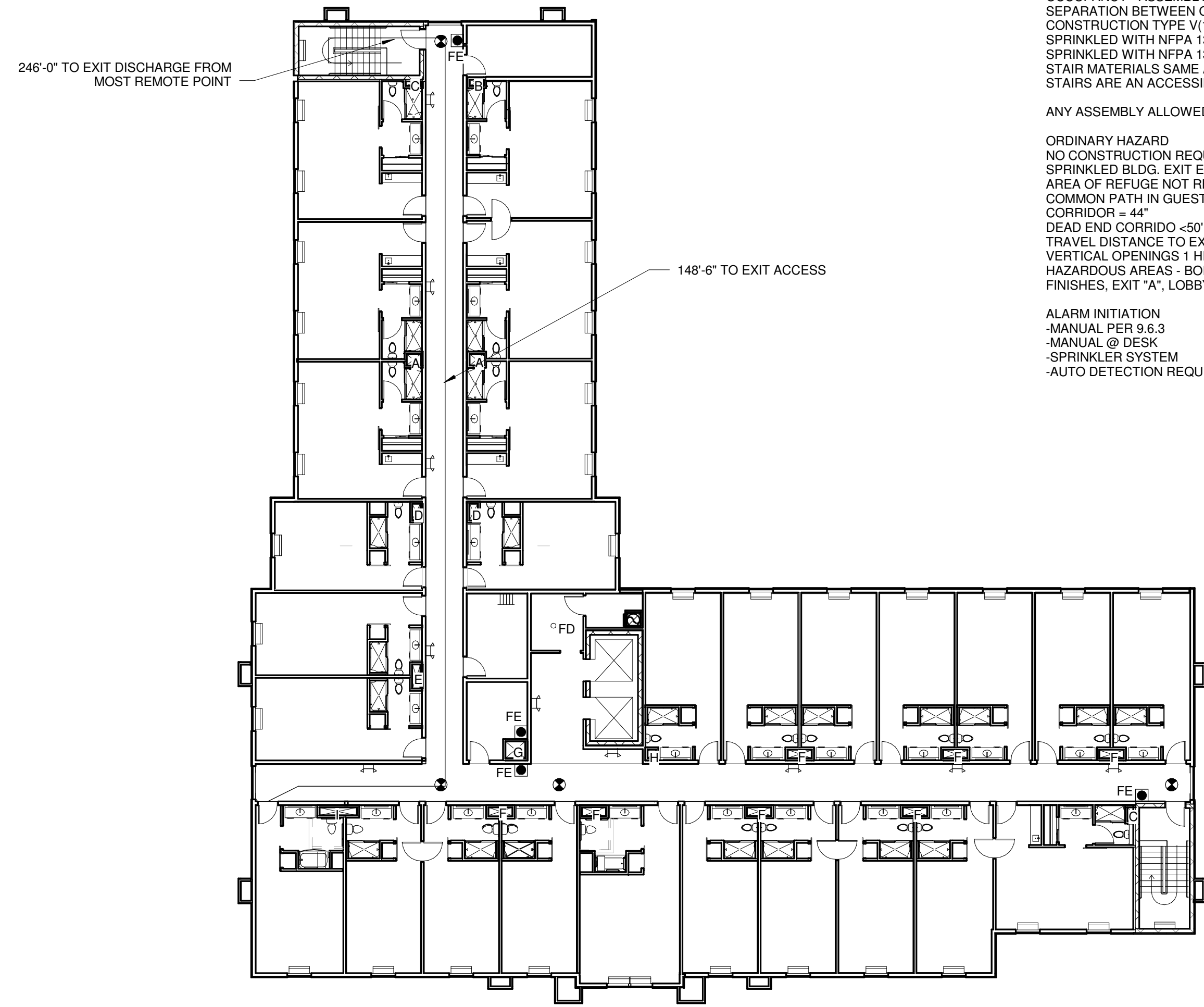
3 | FIRST FLOOR - LIFE SAFETY
1/16" = 1'-0"



1 | SECOND FLOOR - LIFE SAFETY
1/16" = 1'-0"

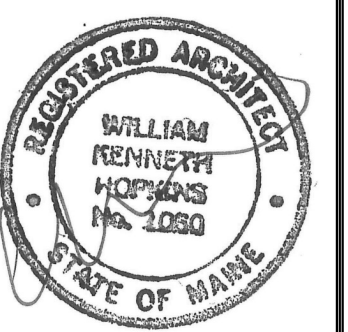


4 | THIRD FLOOR - LIFE SAFETY
1/16" = 1'-0"



2 | FOURTH FLOOR - LIFE SAFETY
1/16" = 1'-0"

NFPA 101 - 2009	REFERENCE
OCCUPANCY - NEW HOTEL	6.1.8
OCCUPANCY - ASSEMBLY (<300)	6.1.2.1
SEPARATION BETWEEN OCCUPANCIES - 1 HR (SPRINKLED)	7.2.1.14.4.1(a)
CONSTRUCTION TYPE V(111)	7.2.1.2
SPRINKLED WITH NFPA 13R (RESIDENTIAL) FLOORS 2 THRU 4	7.2.2.3.1.2
SPRINKLED WITH NFPA 13 (ASSEMBLY) 1ST FLOOR	7.2.12.2.2
STAIR MATERIALS SAME AS BUILDING CONSTRUCTION	
STAIRS ARE AN ACCESSIBLE MEANS OF EGRESS	
ANY ASSEMBLY ALLOWED AT LED FOR V(III)	T12.1.6
ORDINARY HAZARD	28.1.5.1
NO CONSTRUCTION REQUIREMENT	28.1.6
SPRINKLED BLDG. EXIT ENCLOSURE 1 HOUR (2 HR PER IBC)	28.2.2.1.2
AREA OF REFUGE NOT REQUIRED	28.2.2.12.2
COMMON PATH IN GUEST ROOM = 50'	28.2.5.4
CORRIDOR = 44"	28.2.3.3
DEAD END CORRIDOR <50'	28.2.5.6
TRAVEL DISTANCE TO EXIT = 200'	28.2.6.3.3.1
VERTICAL OPENINGS 1 HR (2HRS PER IBC)	28.3.1.1.3
HAZARDOUS AREAS - BOILER RM & GUEST LAUNDRY = 1 HR	28.3.2.2.2
FINISHES, EXIT "A", LOBBY & CORRIDOR "B", OTHERS "C"	28.3.3.2
ALARM INITIATION	28.3.4.2
-MANUAL PER 9.6.3	
-MANUAL @ DESK	
-SPRINKLER SYSTEM	
-AUTO DETECTION REQUIRED BEYOND SMOKES IN ROOMS	



Prepared For:
PORTLAND HOTEL, INC

Consultant:
ARCHETYPE architects
48 Union Wharf Portland, Maine 04101
(207) 772-0022 ARCHETYPE@ARCHETYPEDA.COM

Project:
HAMPTON INN & SUITES
1200 Brighton Ave
Portland, ME

Revisions:	50% Submission	RESPONSE TO CITY
1 12 DEC 2015		
4 30 MAR 2016		

Date: 12-23-2015
Scale: 1/16" = 1'-0"
LIFE SAFETY PLANS

A1.06