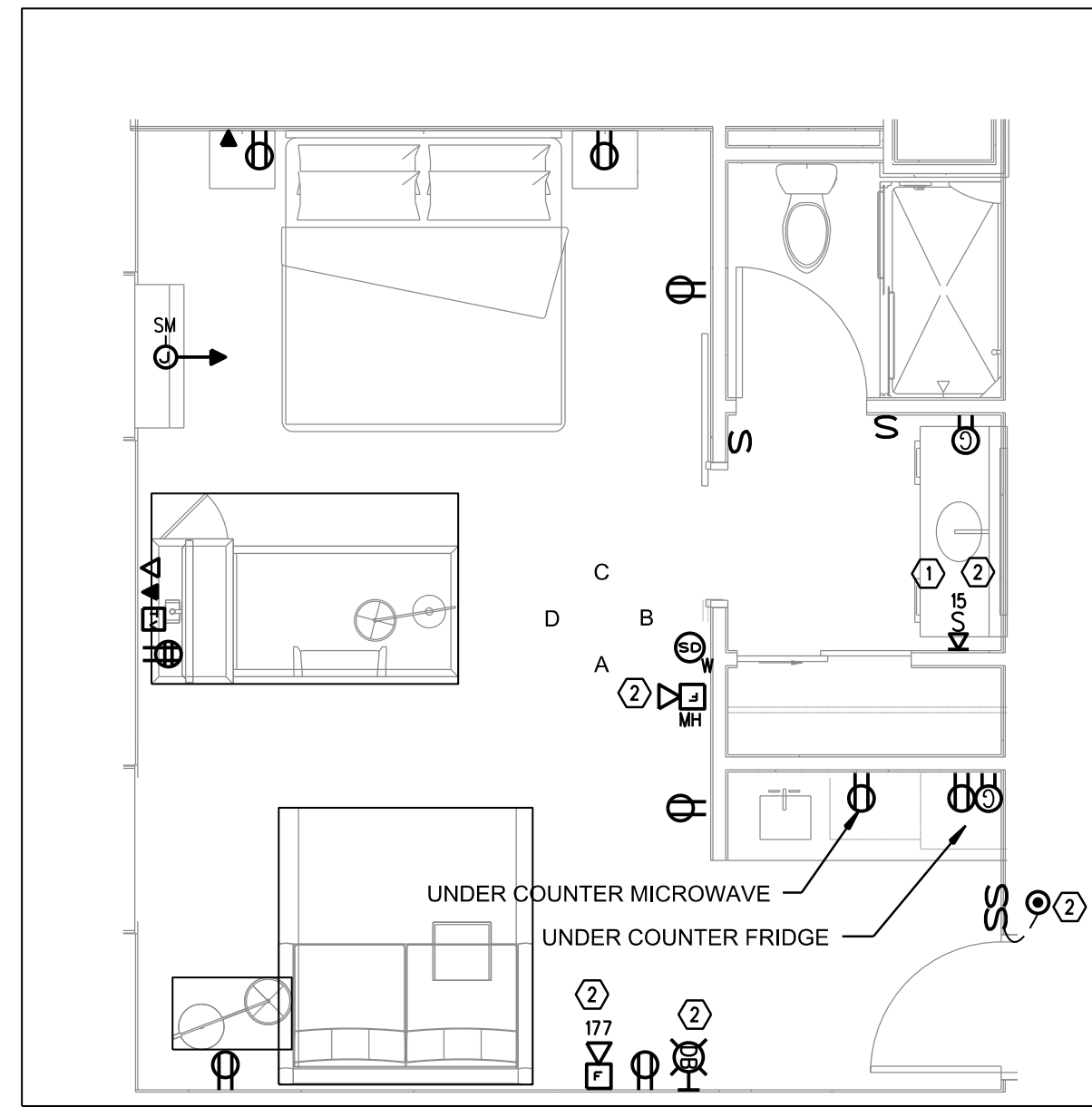
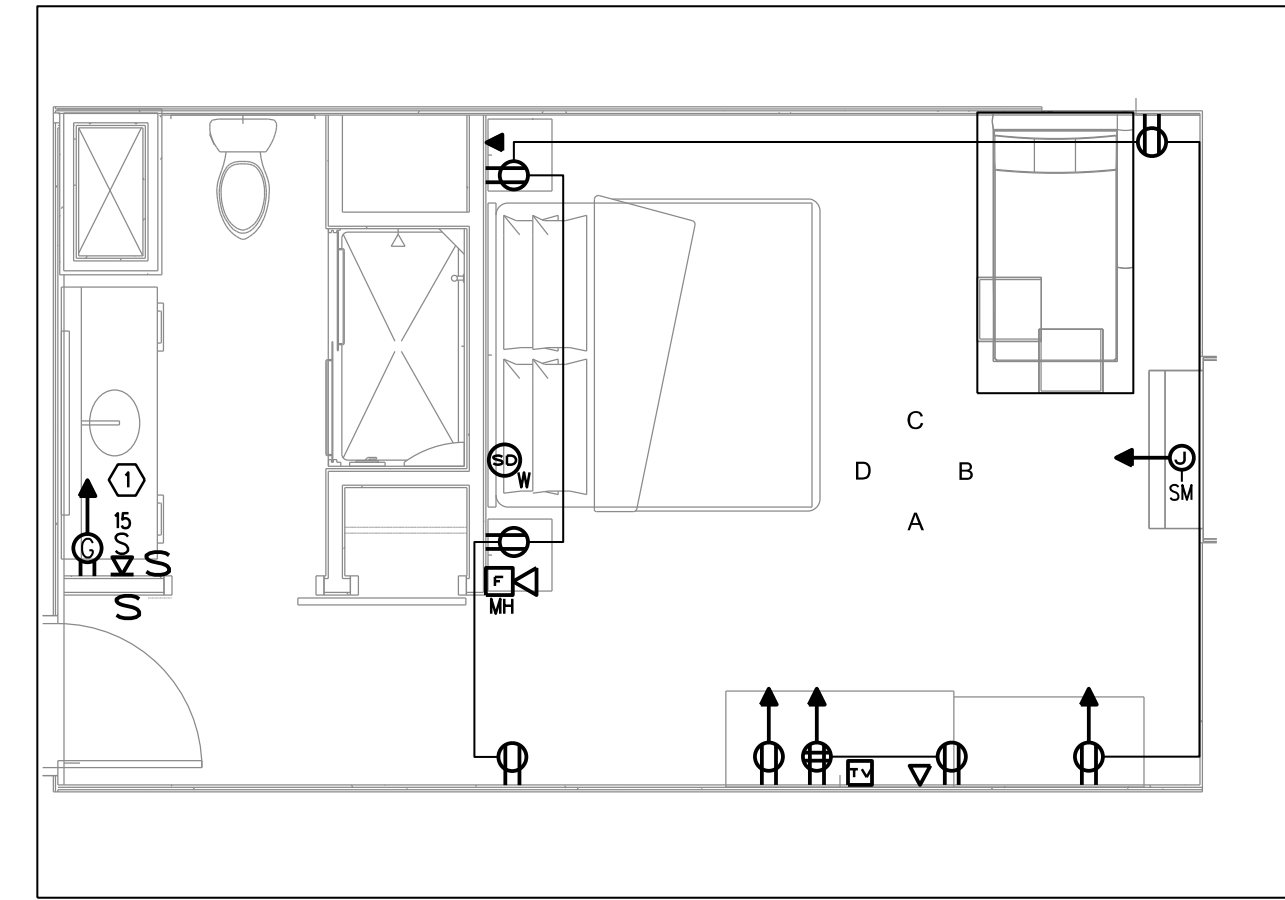


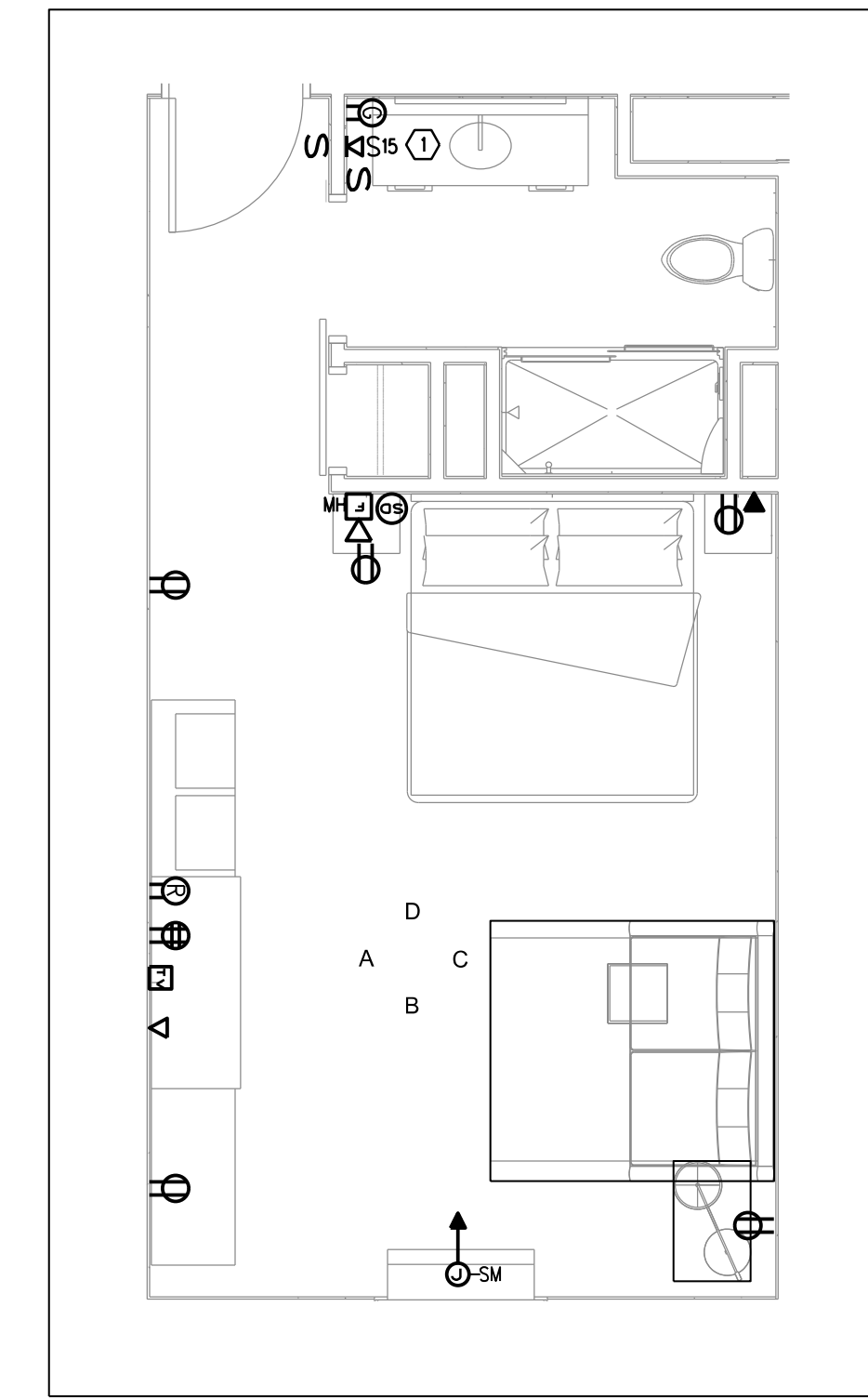
3 | DOUBLE QUEEN - ENLARGED
1/4" = 1'-0"



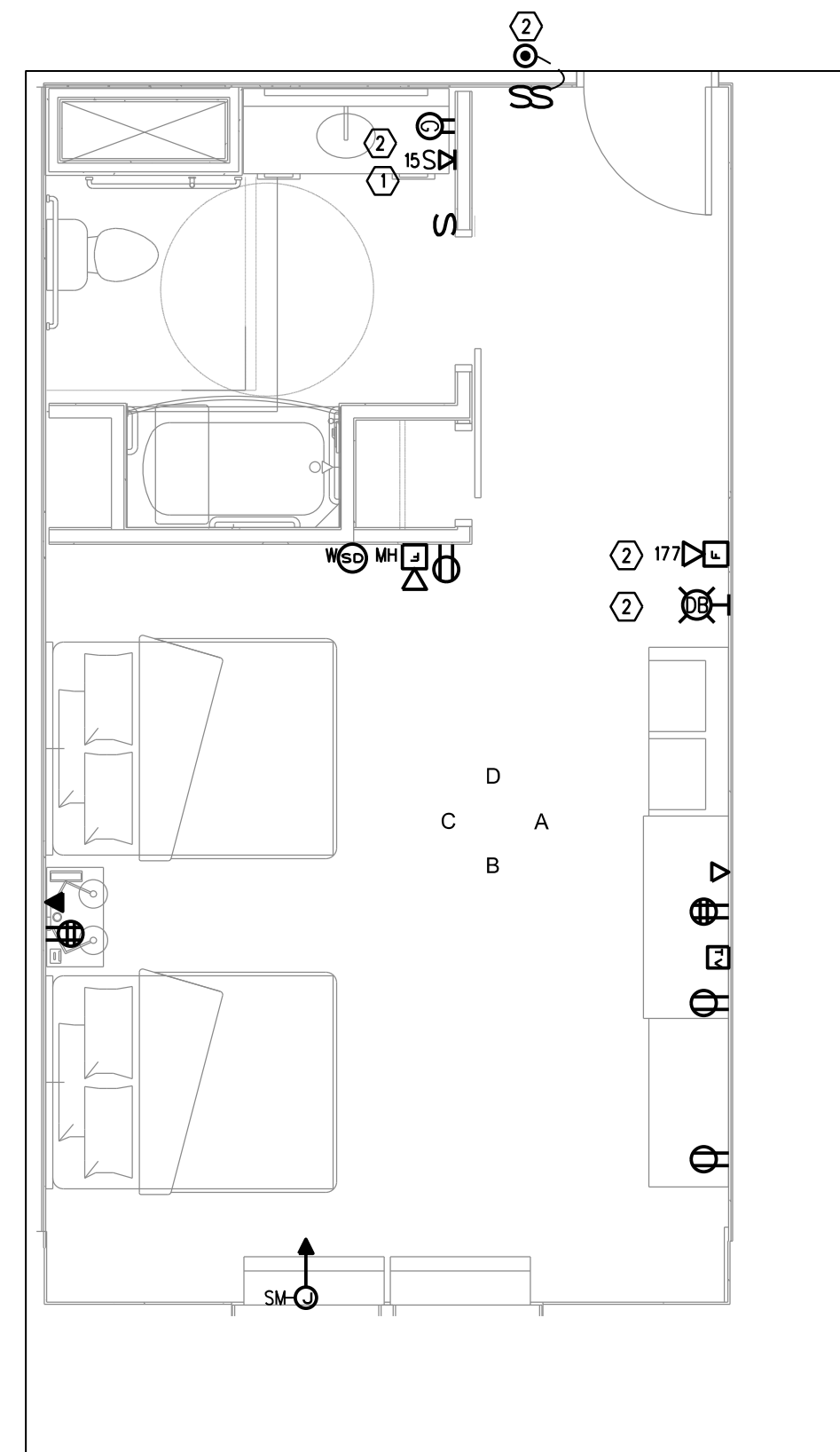
2 | KING STUDIO - ENLARGED
1/4" = 1'-0"



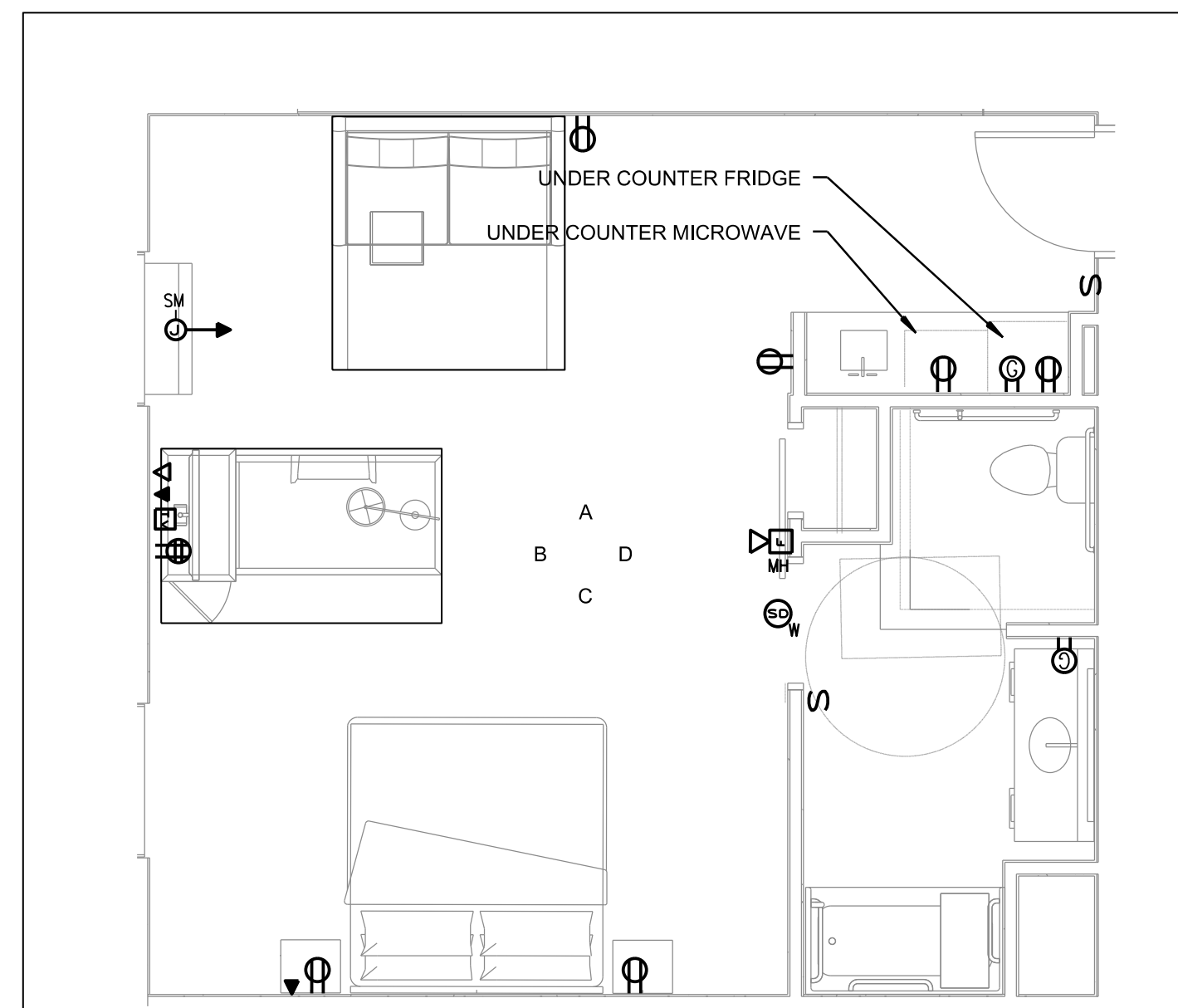
5 | KING - ENLARGED
1/4" = 1'-0"



1 | KING SOFA - ENLARGED
1/4" = 1'-0"



4 | DOUBLE QUEEN ADA - ENLARGED
1/4" = 1'-0"

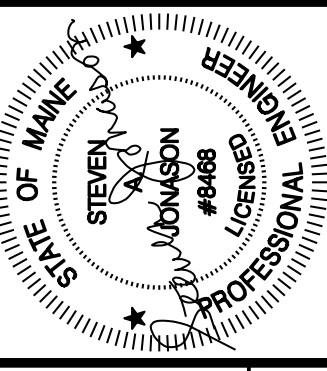


6 | KING STUDIO ADA - ENLARGED
1/4" = 1'-0"

- ① GUESTROOM 103-KING STUDIO ADA SHALL HAVE FIRE ALARM STROBE LOCATED WITHIN BATHROOM
- ② GUESTROOMS 106, 220, 318 AND 431 KING STUDIO COMM SHALL HAVE COMMUNICATIONS FEATURES. THIS SHALL INCLUDE:
 - A. FIRE ALARM STROBE IN BATHROOM
 - B. FIRE ALARM HORN/STROBE WITH 177cd
 - C. DOORBELL WITH SWITCH FOR ON/OFF FUNCTIONALITY
 - D. STROBE LIGHT ASSOCIATED WITH DOORBELL
 - E. FIRE ALARM MINIHORN WILL NOT BE INSTALLED WITH IN COMM ROOMS.

- ① GUESTROOM 419-KING ADA SHALL HAVE FIRE ALARM STROBE LOCATED WITHIN BATHROOM

- ① GUESTROOM 319-DOUBLE QUEEN ADA SHALL HAVE FIRE ALARM STROBE LOCATED WITHIN BATHROOM
- ② GUESTROOMS 304 AND 311 DOUBLE QUEEN COMM SHALL HAVE COMMUNICATIONS FEATURES. THIS SHALL INCLUDE:
 - A. FIRE ALARM STROBE IN BATHROOM
 - B. FIRE ALARM HORN/STROBE WITH 177cd
 - C. DOORBELL WITH SWITCH FOR ON/OFF FUNCTIONALITY
 - D. STROBE LIGHT ASSOCIATED WITH DOORBELL
 - E. FIRE ALARM MINIHORN WILL NOT BE INSTALLED WITH IN COMM ROOMS.



Prepared For:
PORTLAND HOTEL, INC



Consultant:

Architect:
48 Union Wharf Portland, Maine 04101
(207) 772-6023 ARCHTYPE@ARCHTYPEPA.COM

Project:
HAMPTON INN
Address:
City, State

Revisions:
ISSUED FOR PERMIT
PROGRESS PRINT
NOT FOR CONSTRUCTION

Date: 02-10-2016
Scale: 1/2" = 1'-0"

TYPICAL UNIT LAYOUTS

E3.01