

PORTLAND HOTEL, INC

Prepared For:

Consultant:

ARCHETYPE architects
48 Union Wharf Portland, Maine 04101
(207) 772-6022 ARCHETYPE@ARCHETYPEA.COM

Architect:

HAMPTON INN & SUITES
1200 Brighton Ave
Portland, ME

Project:

Revisions:
2 10 FEB 2016 SUB TO CITY

Date: 12-23-2015
Scale: As indicated
MILL WORK DETAILS

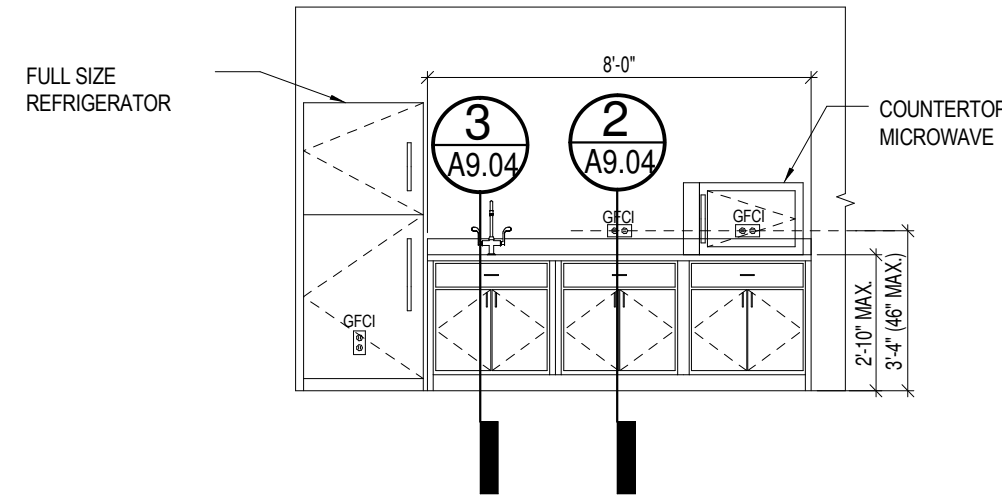
Date:

Scale:

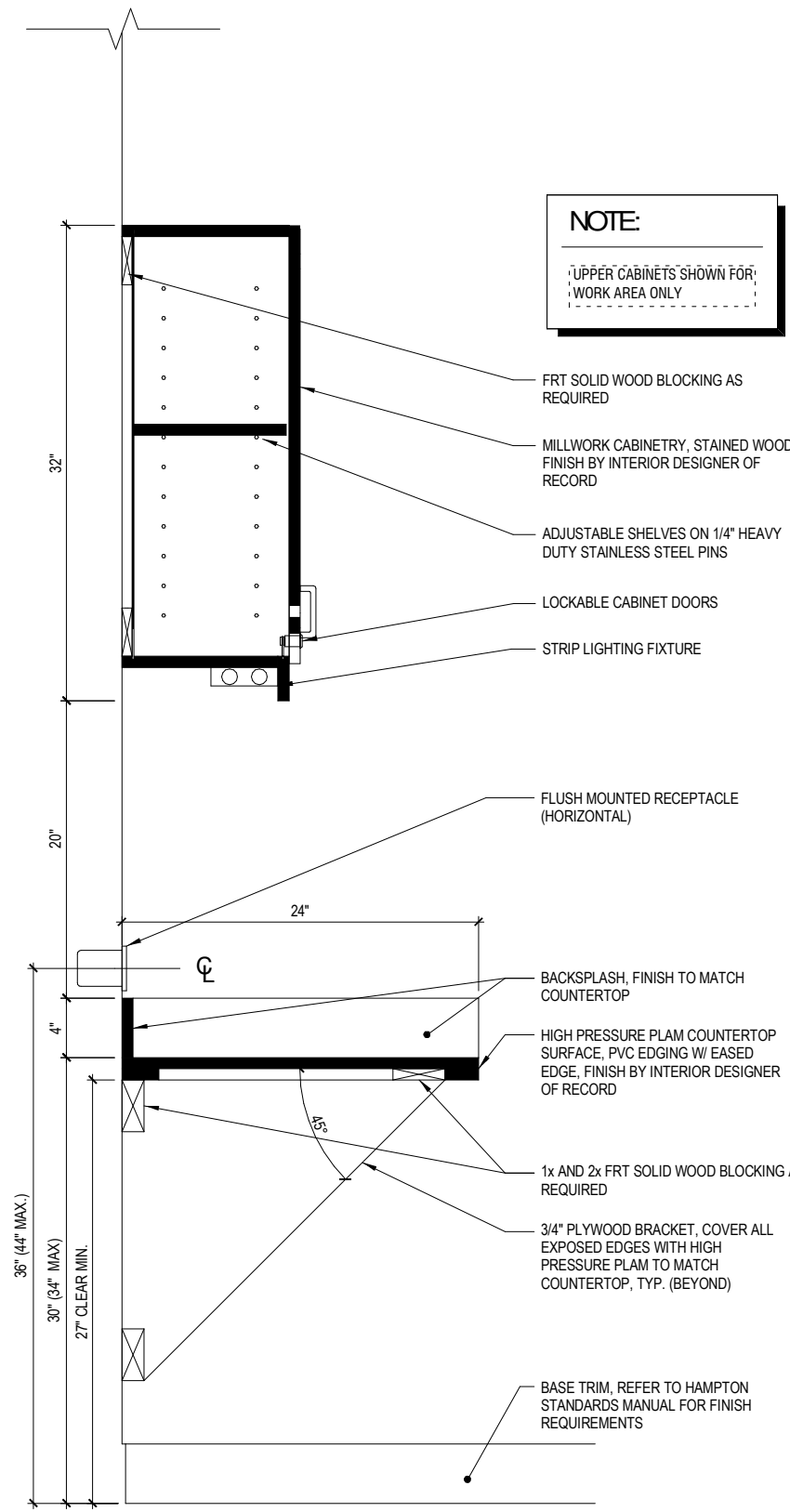
As indicated

MILL WORK DETAILS

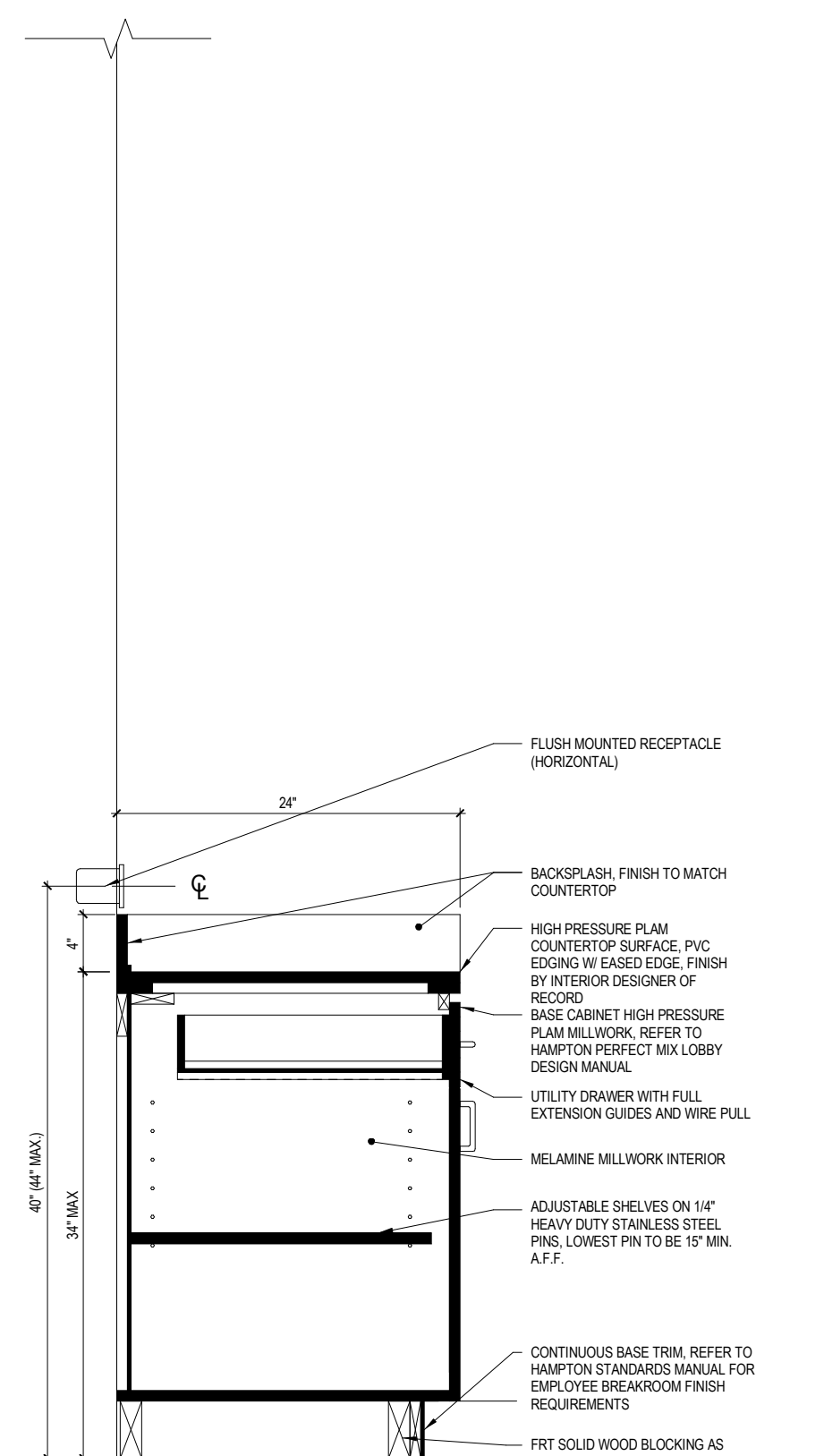
A9.04



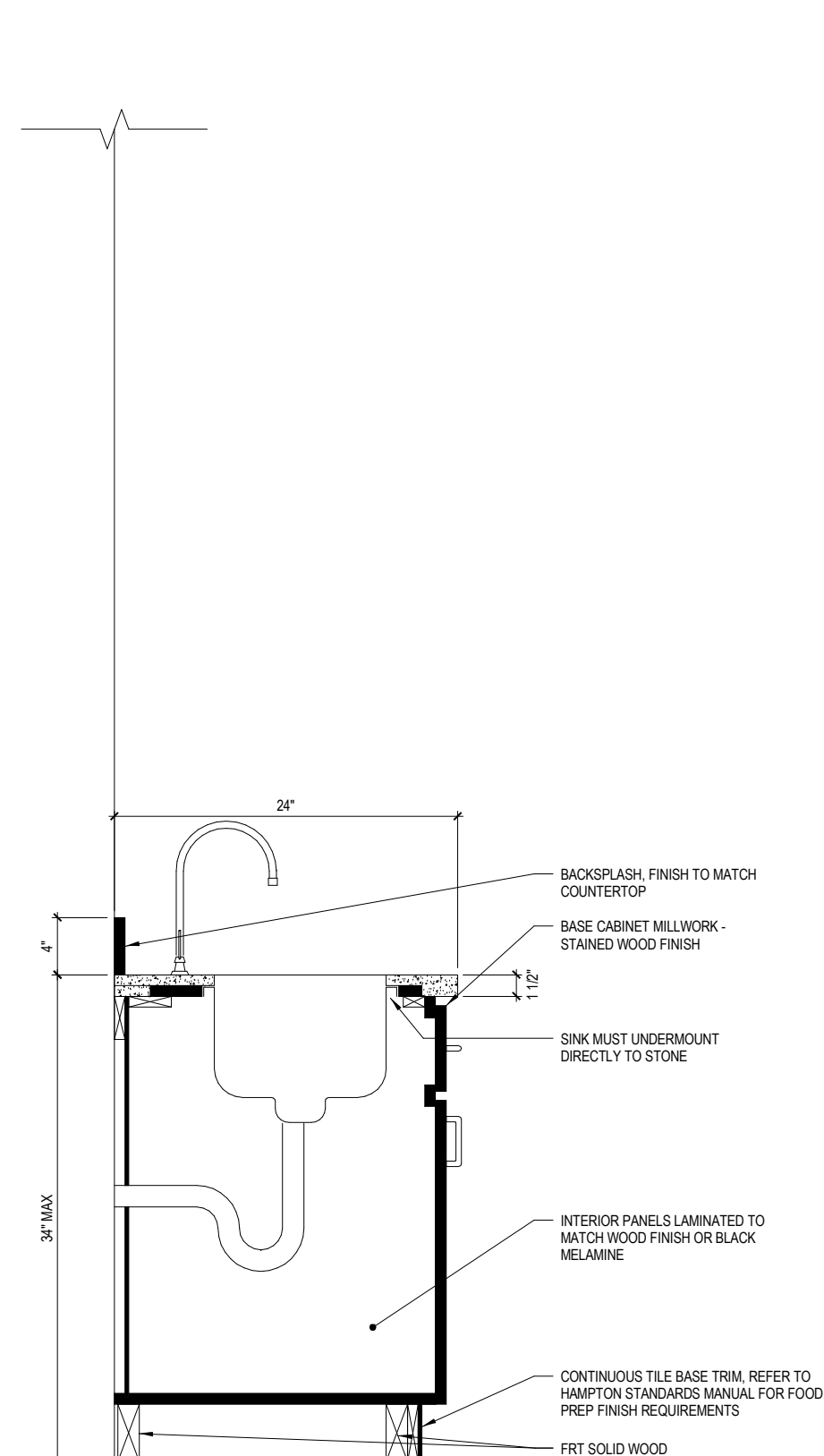
11 EMPLOYEE BREAKROOM KEY PLAN
1/4" = 1'-0"



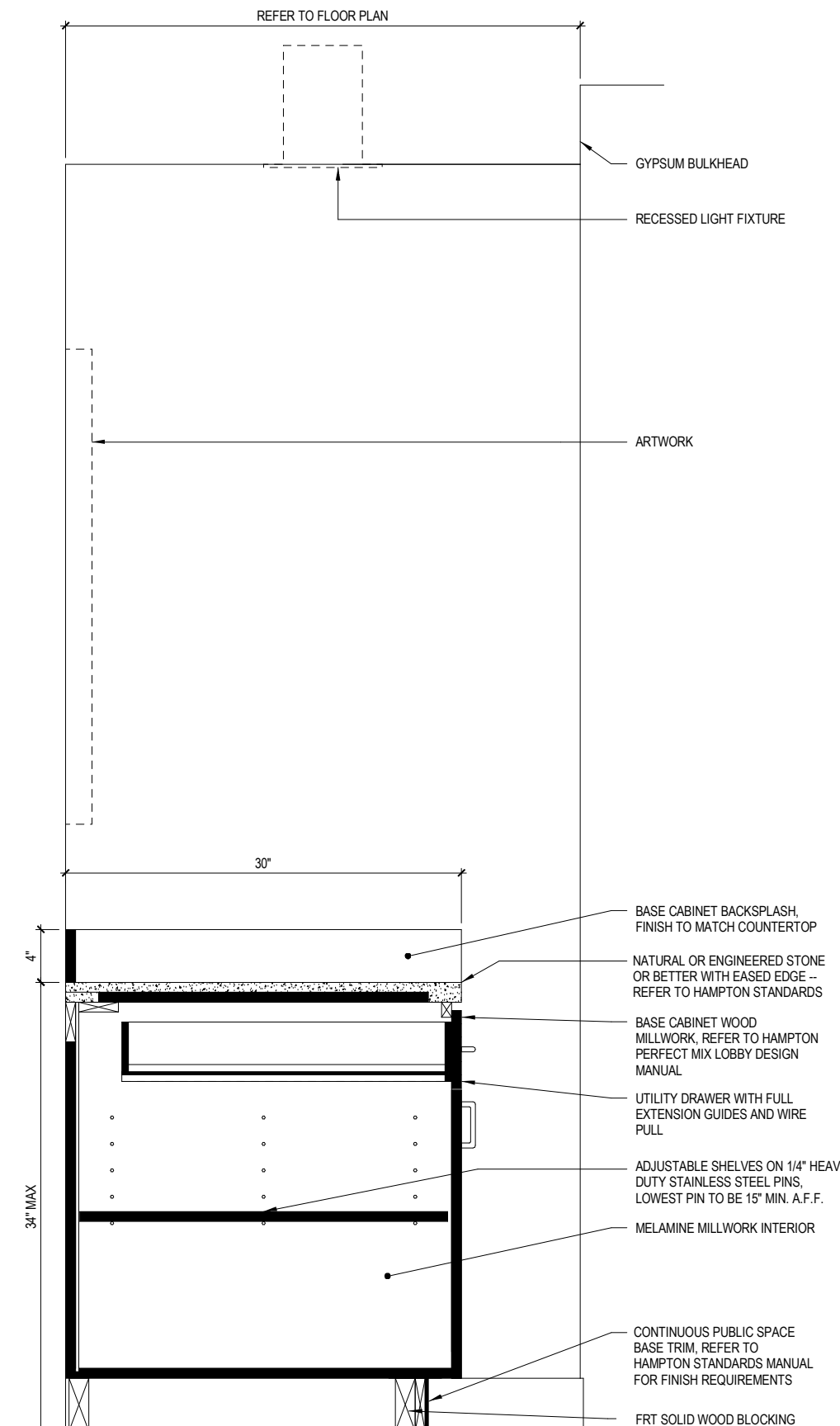
1 ENGINEERING WORK AREA SECTION 2
1" = 1'-0"



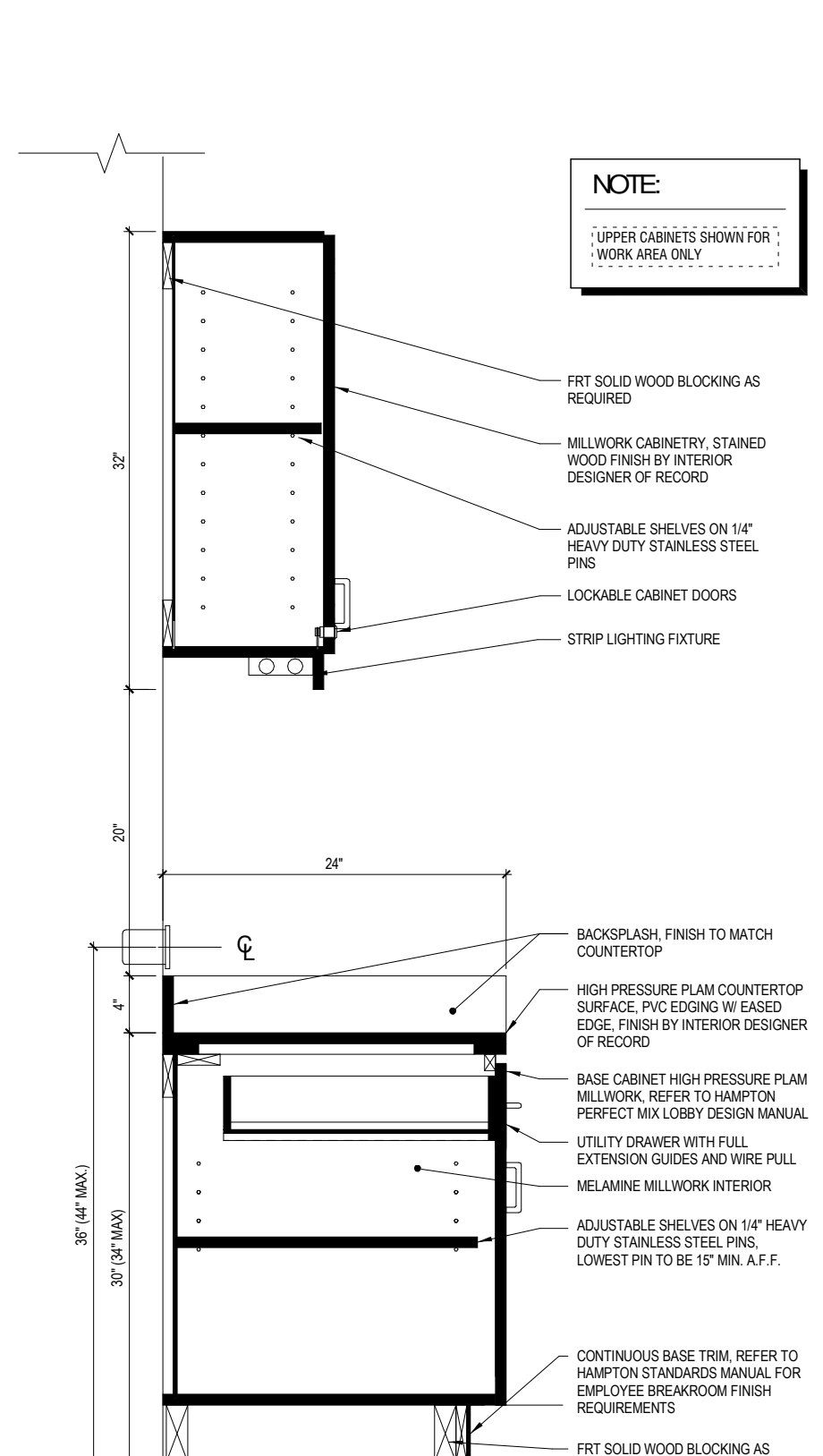
2 EMPLOYEE BREAKROOM SECTION 1
1" = 1'-0"



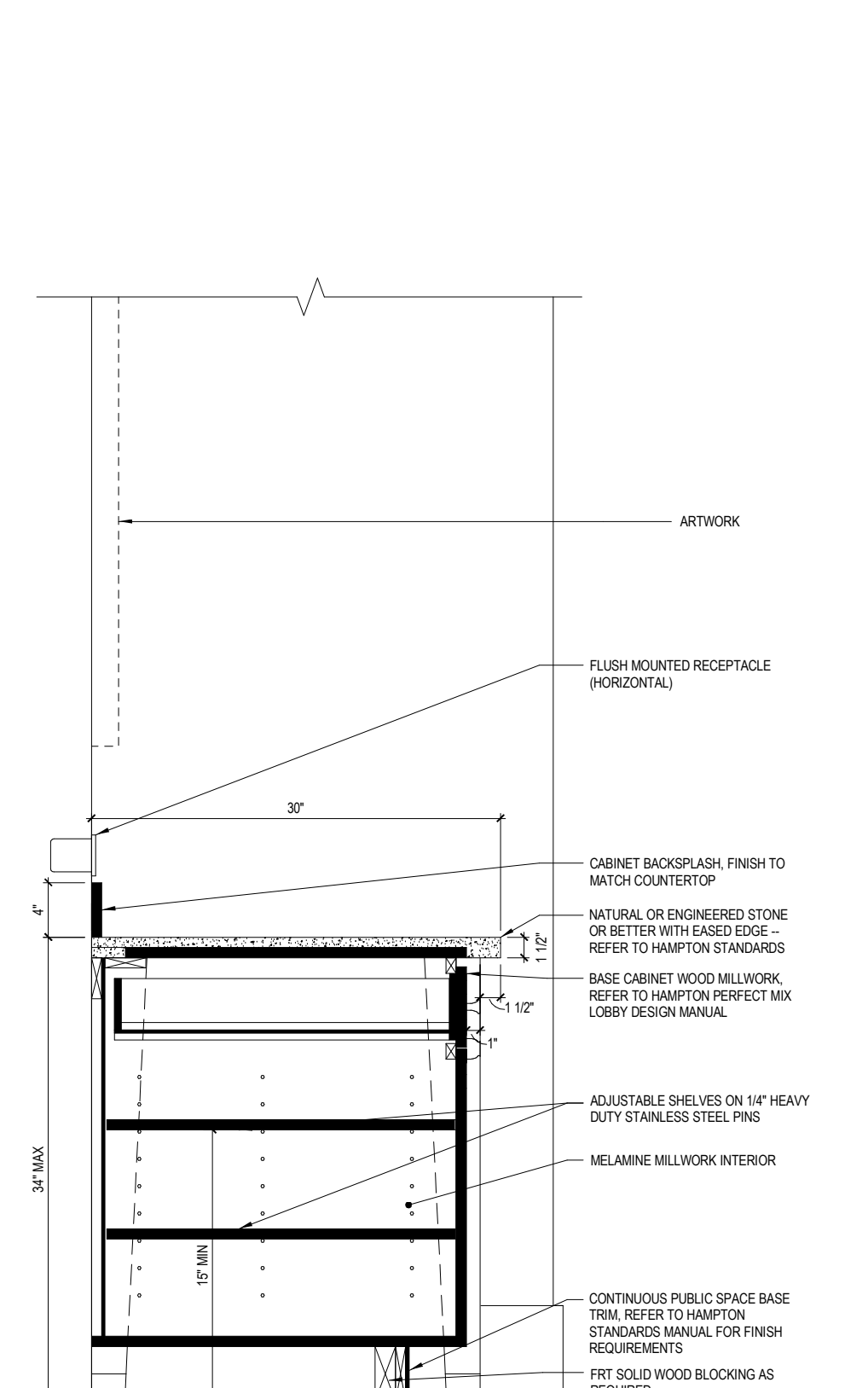
3 EMPLOYEE BREAKROOM SECTION 2
1" = 1'-0"



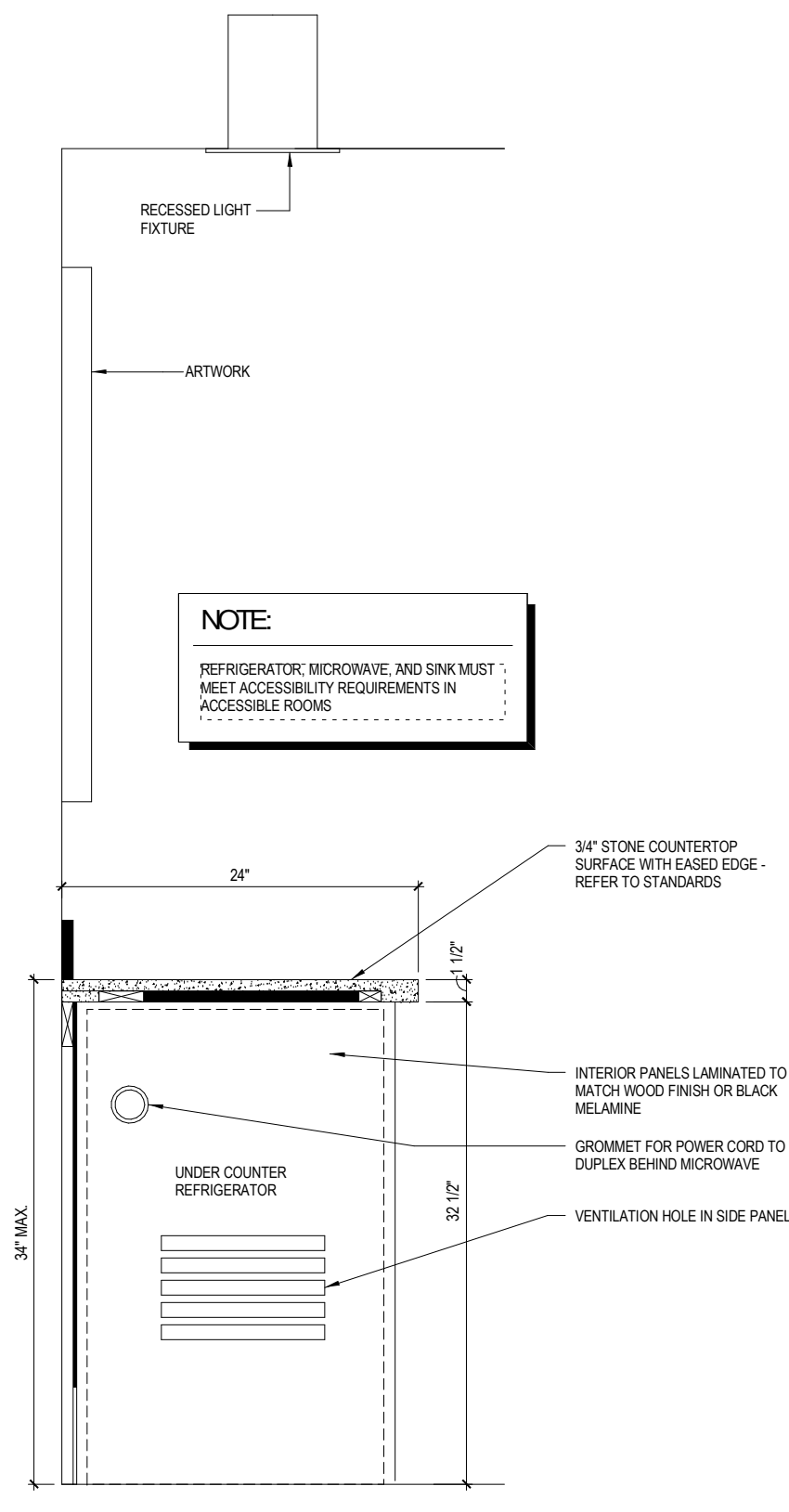
4 MEETING ROOM SECTION
1" = 1'-0"



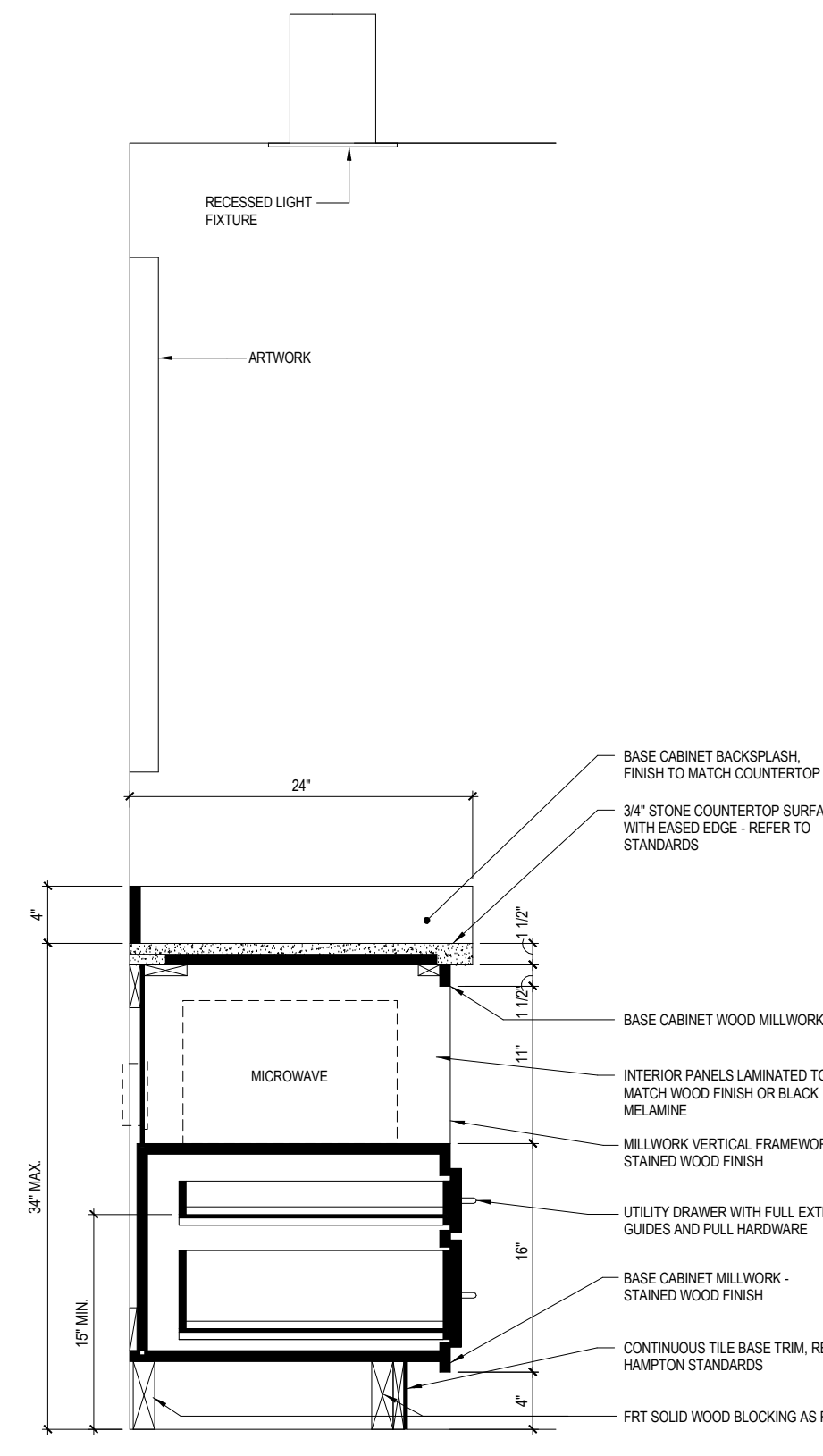
5 OPEN OFFICE SECTION
1" = 1'-0"



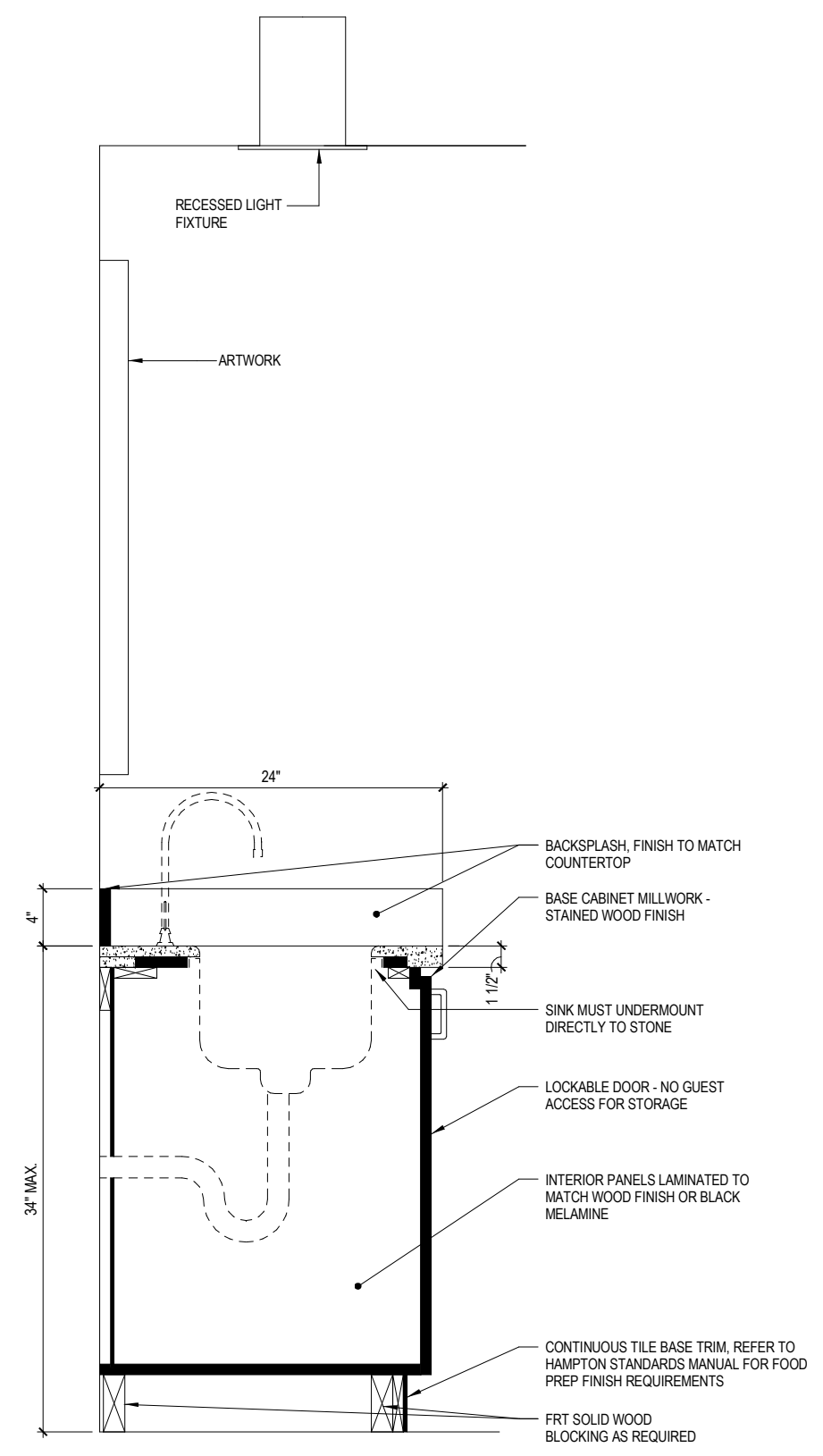
6 COMPLIMENTARY AREA SECTION 1
1" = 1'-0"



7 GUESTROOM SECTION 1
1" = 1'-0"



8 GUESTROOM SECTION 2
1" = 1'-0"



9 GUESTROOM SECTION 3
1" = 1'-0"