

PORTLAND HOTEL, INC

Prepared For:
Consultant:

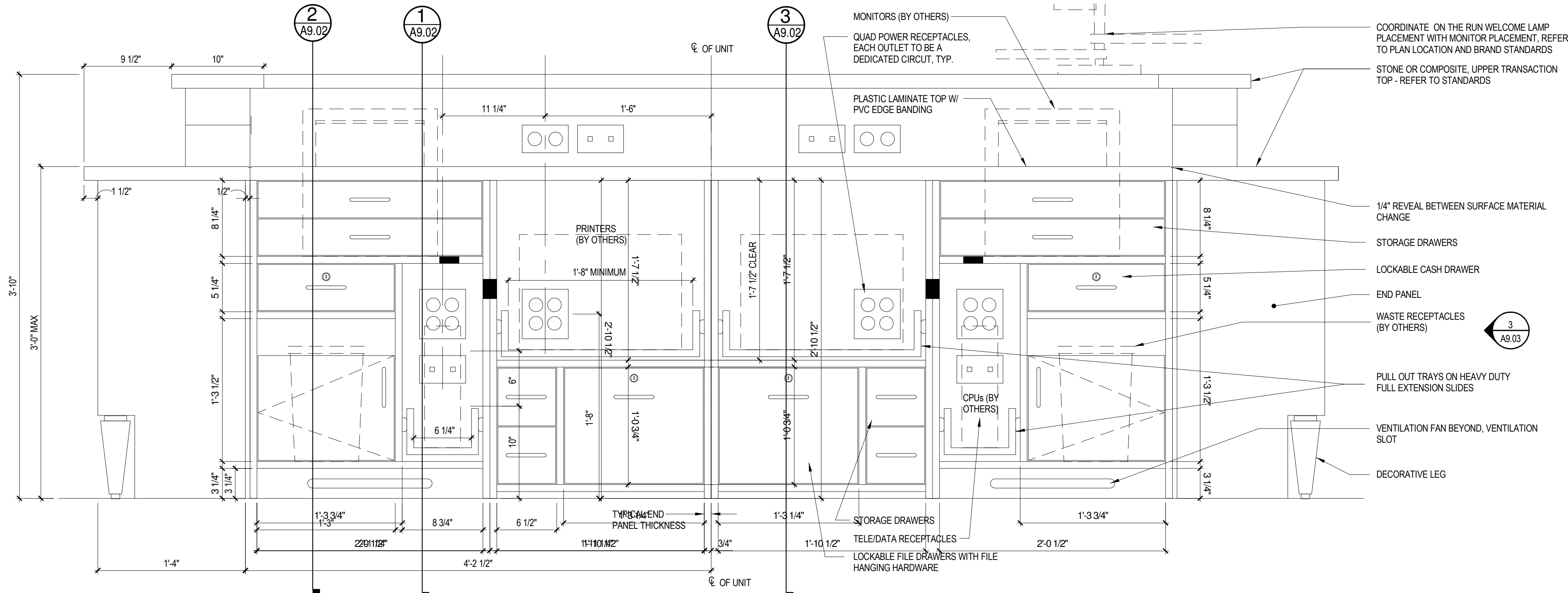
Architect:
ARCHETYPE architects
48 Union Wharf Portland, Maine 04101
(207) 772-6022 ARCHETYPE@ARCHETYPEPA.COM

Project:
HAMPTON INN & SUITES
1200 Brighton Ave
Portland, ME

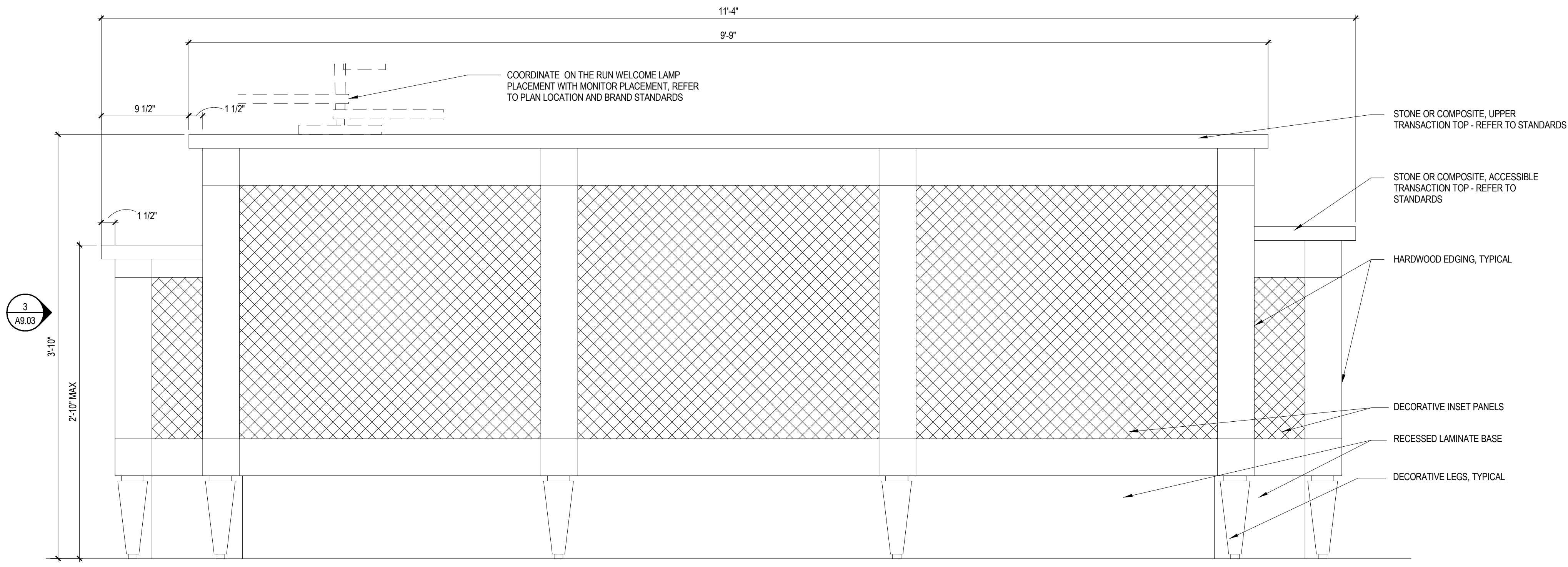
Revisions:
2 10 FEB 2016 SUB TO CITY

Date: 12-23-2015
Scale: 1 1/2" = 1'-0"
MILL WORK DETAILS

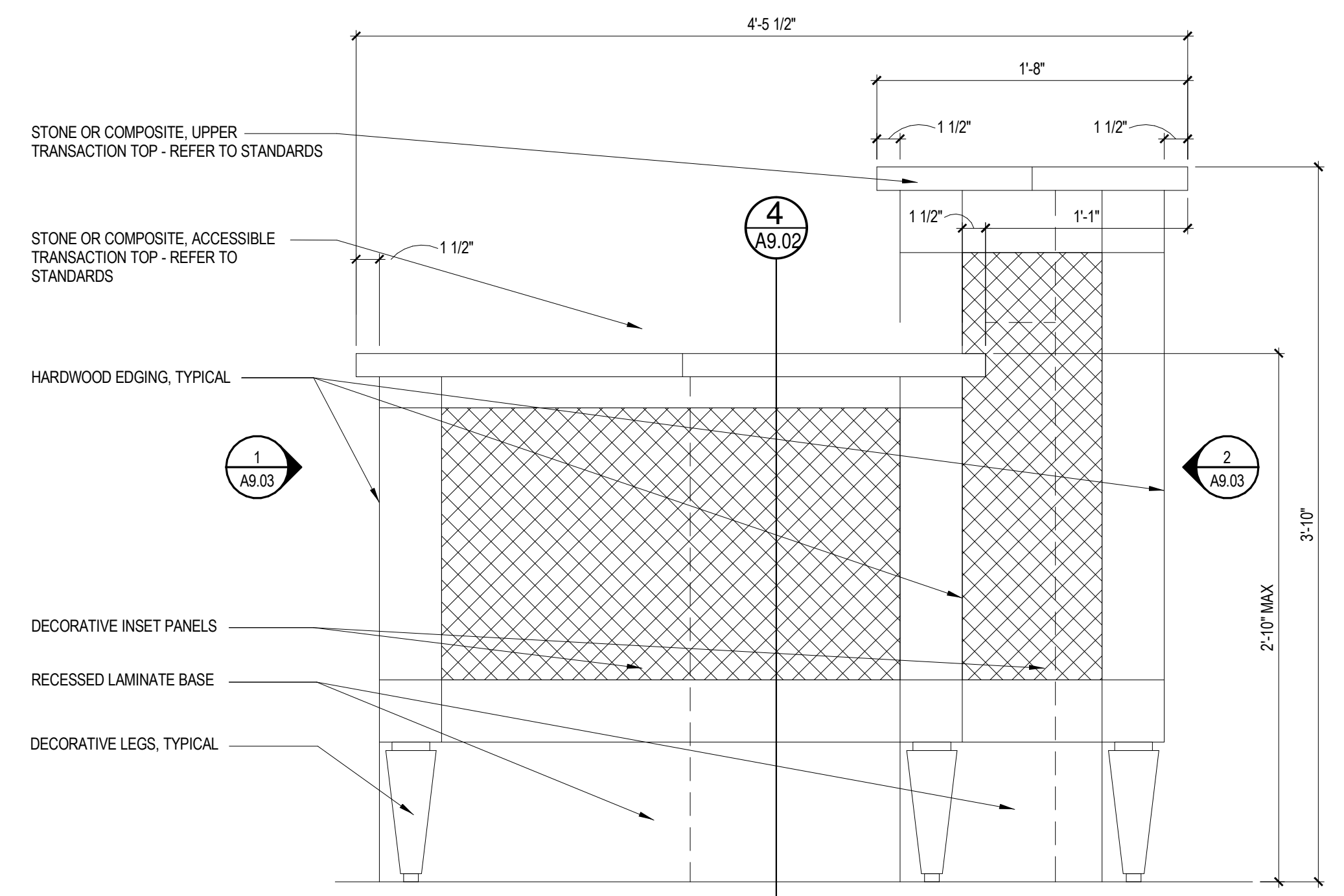
A9.03



1 ENLARGED ELEVATION 1
1 1/2" = 1'-0"



2 ENLARGED ELEVATION 2
1 1/2" = 1'-0"



3 ENLARGED ELEVATION 3
1 1/2" = 1'-0"