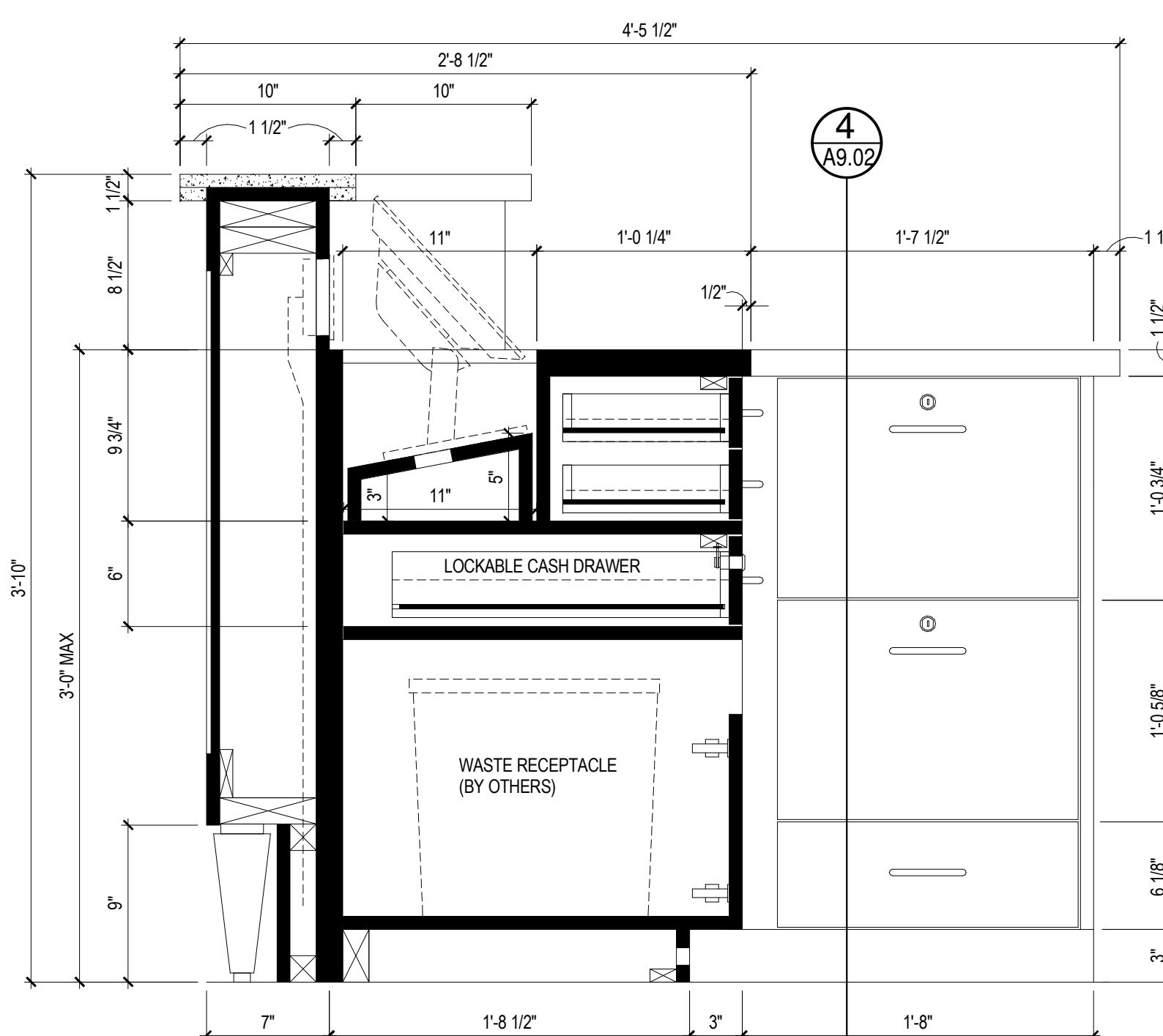
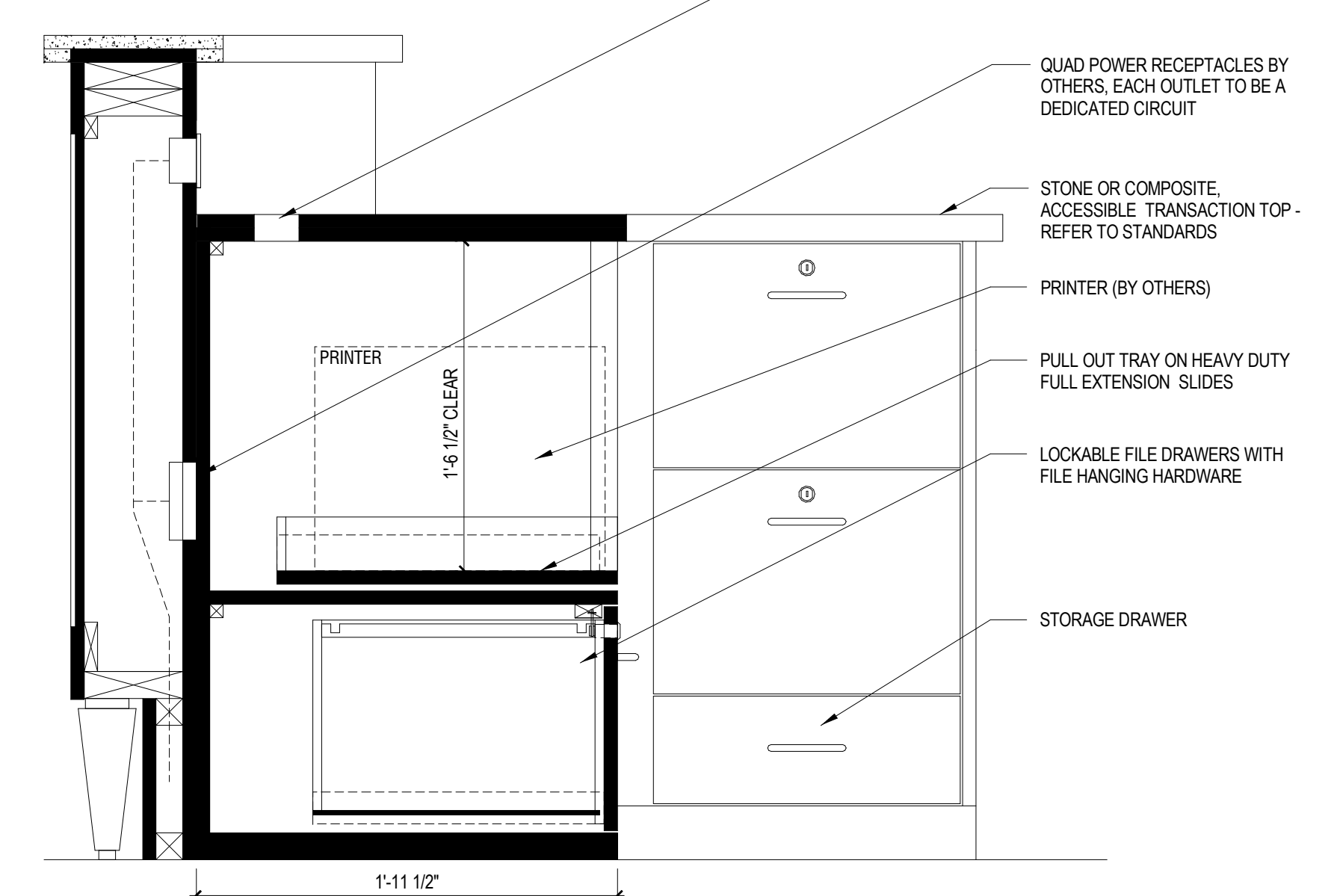


1 SECTION DETAIL 1
1 1/2" = 1'-0"

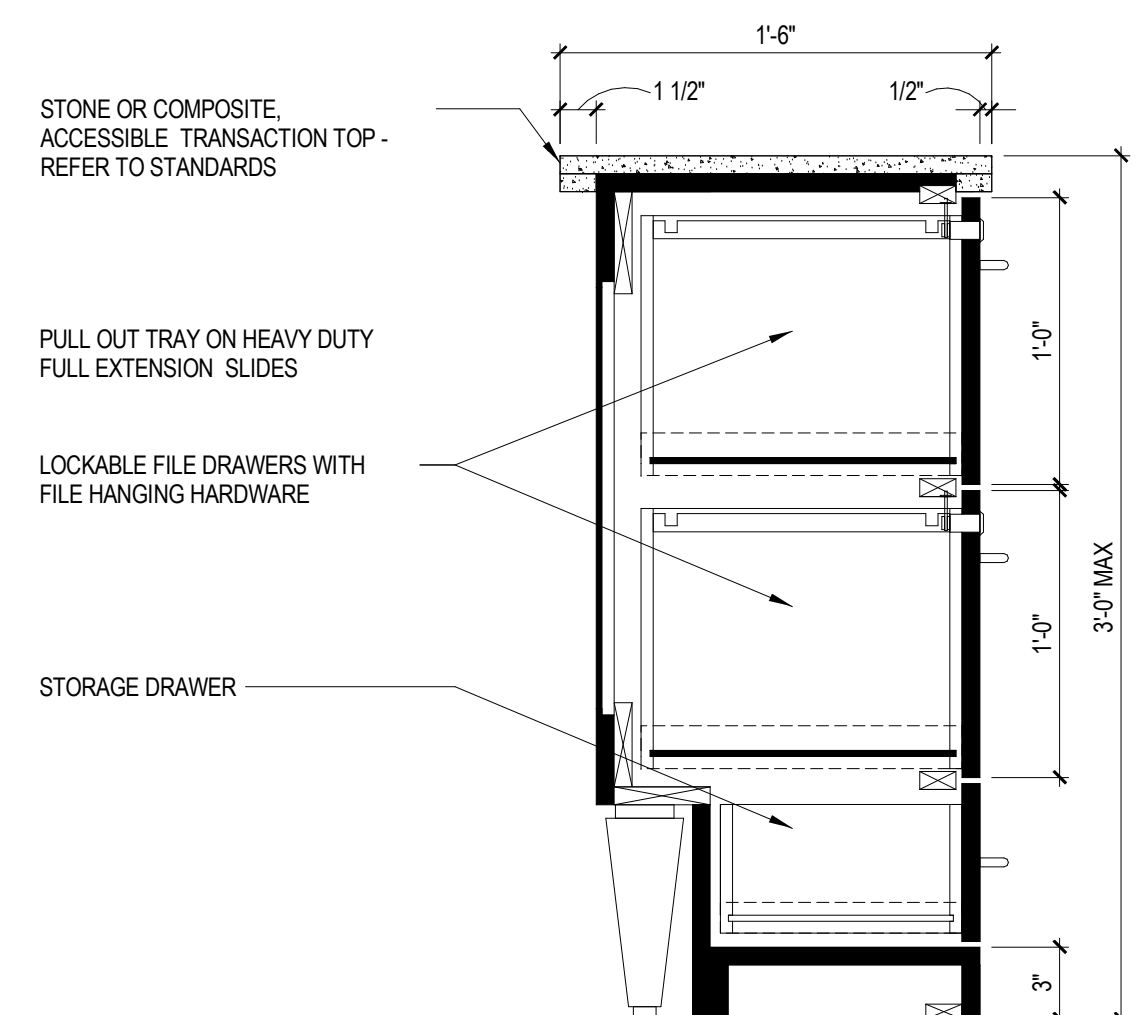


2 SECTION DETAIL 2
1 1/2" = 1'-0"

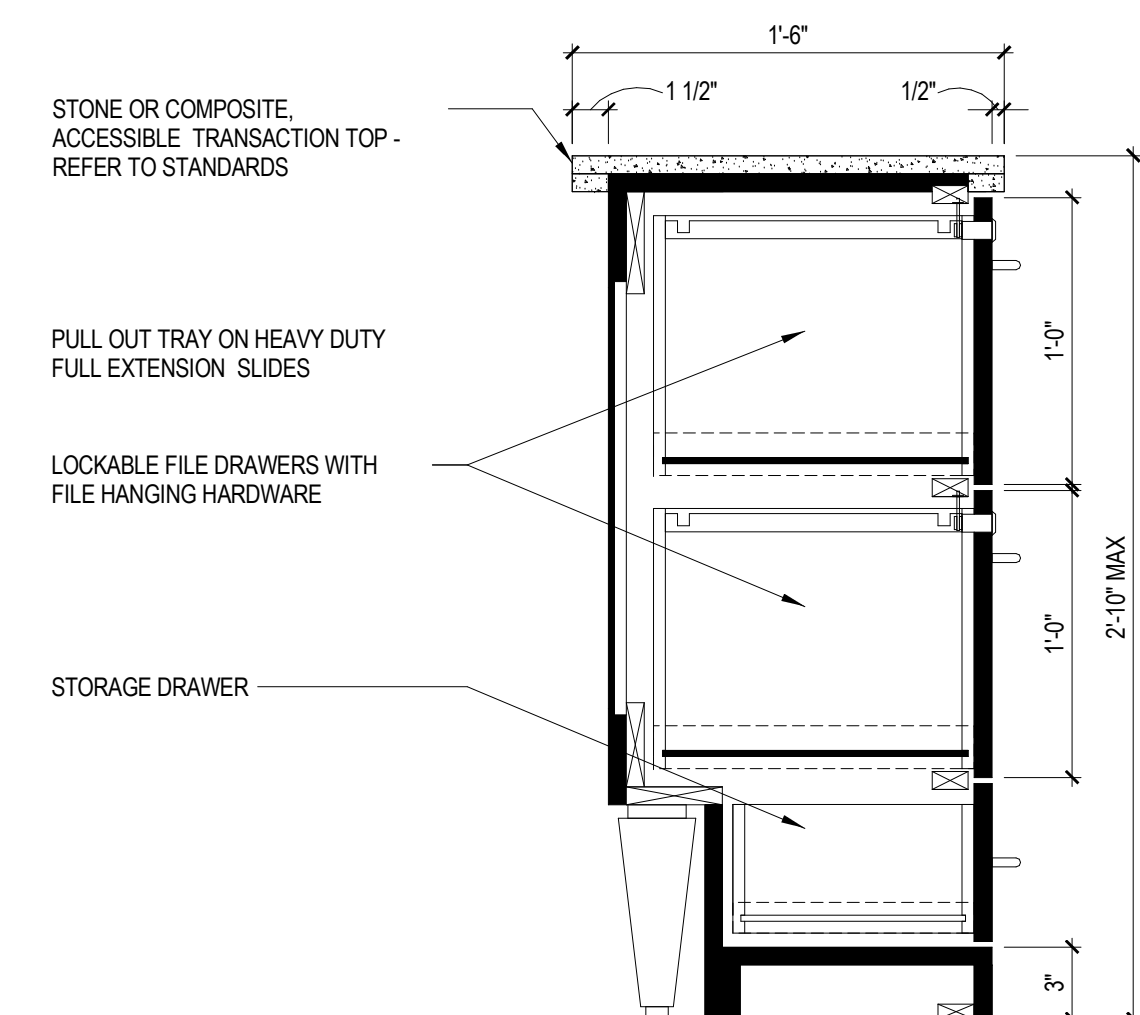
NOTE
1. DIMENSIONS ON THIS DETAIL ARE TYPICAL AND APPLY TO SIMILAR DETAILS, UNLESS NOTED OTHERWISE



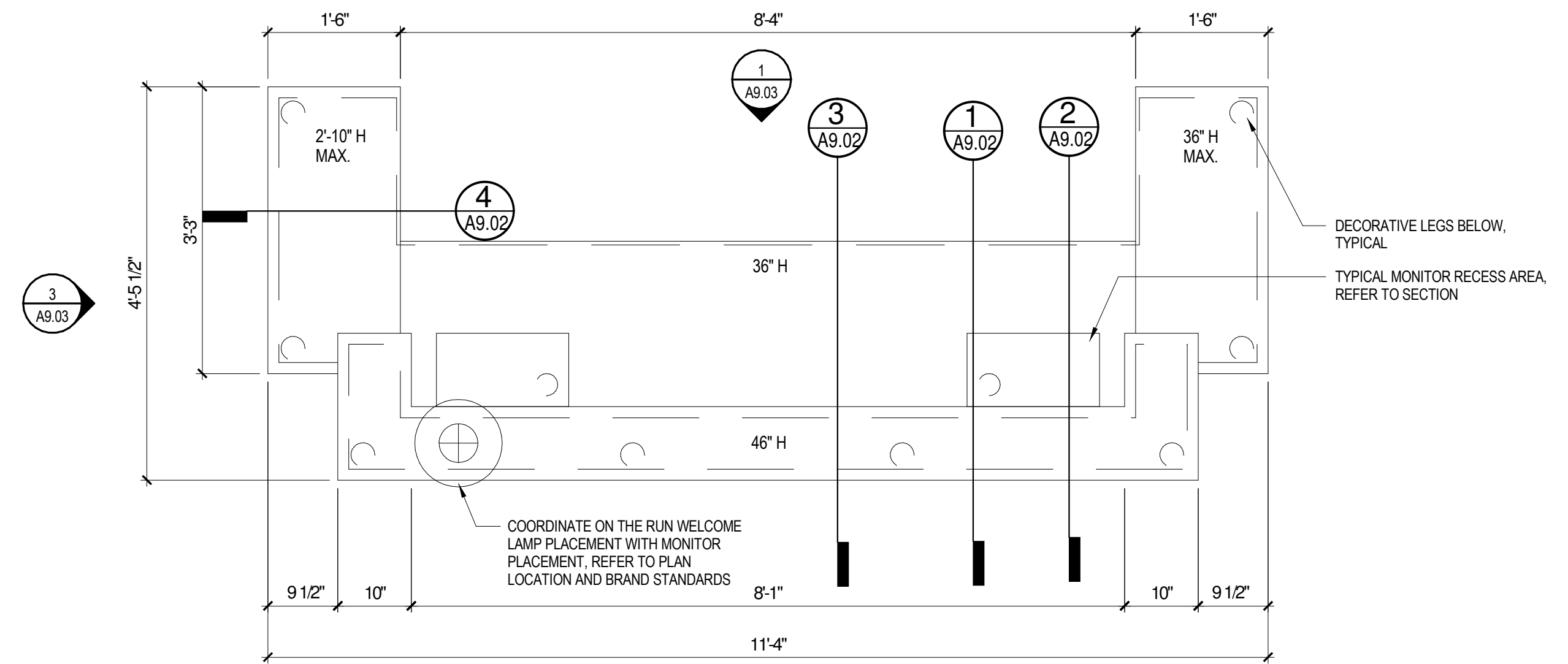
3 SECTION DETAIL 3
1 1/2" = 1'-0"



4 SECTION DETAIL 4
1 1/2" = 1'-0"

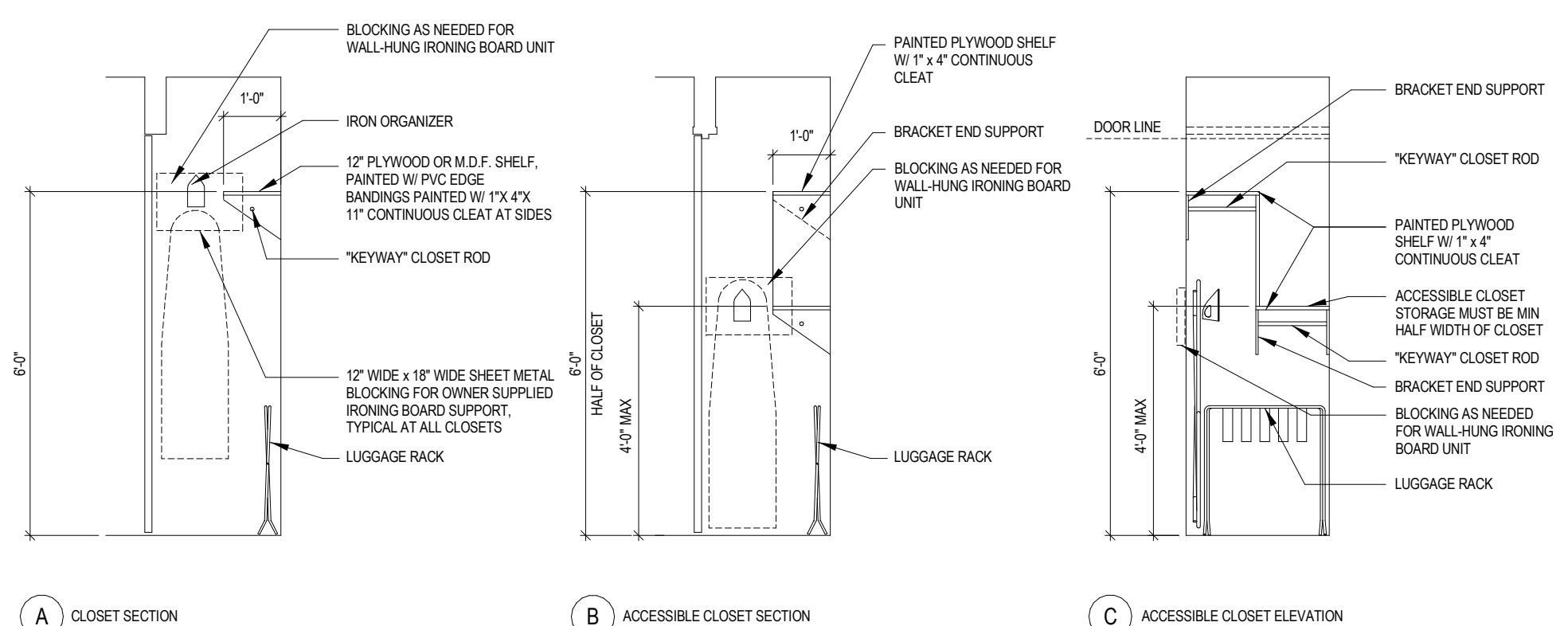


4A SECTION DETAIL 4A
1 1/2" = 1'-0"



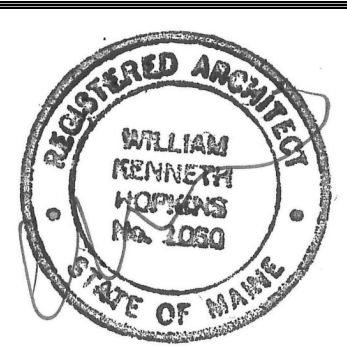
NOTE
1. REFER TO ENLARGED ELEVATION S/A7.03 FOR POWER REQUIREMENTS. REFER TO PLANS FOR DESK LOCATION.

5 ENLARGED PLAN
1 1/2" = 1'-0"



6 CLOSET DETAILS
3/8" = 1'-0"

- GENERAL NOTES:**
- DRAWERS TO HAVE WIRE PULLS AND BE LOCKABLE AS SHOWN, ALL LOCKS TO BE MASTER KEYED.
 - DRAWERS AND TRAYS TO HAVE HEAVY DUTY FULL EXTENSION SLIDES.
 - HORIZONTAL LAMINATE SURFACES TO BE HIGH PRESSURE LAMINATE WITH PROTECTIVE EDGES. VERTICAL LAMINATE SURFACES TO BE HIGH OR LOW PRESSURE LAMINATE.
 - EXPOSED INTERIOR SURFACES TO BE MELAMINE.
 - OUTSIDE CORNERS TO BE DURABLE MATERIALS THAT CAN WITHSTAND IMPACT. UNPROTECTED LAMINATE CORNERS OR WOOD VENEER CORNER ARE NOT PERMITTED.
 - FRONT DESK TO BE FREESTANDING WITH FURNITURE-LIKE APPEARANCE.
 - THREE DRAWER RETURN MODULES ARE INTENDED TO PROVIDE AN ACCESSIBLE TRANSACTION SURFACE. THESE MODULES MAY BE DELETED IF OTHER ACCESSIBLE SURFACES ARE PROVIDED.



Prepared For:
PORTLAND HOTEL, INC

Consultant:
ARCHETYPE architects
48 Union Wharf Portland, Maine 04101
(207) 772-6022 ARCHETYPE@ARCHETYPEPA.COM

Project:
HAMPTON INN & SUITES
1200 BRIGHTON AVE
PORTLAND, ME

Revisions:
2 TO FEB 2016
SUB TO CITY

Date: 12-23-2015
Scale: As indicated
MILL WORK DETAILS

A9.02