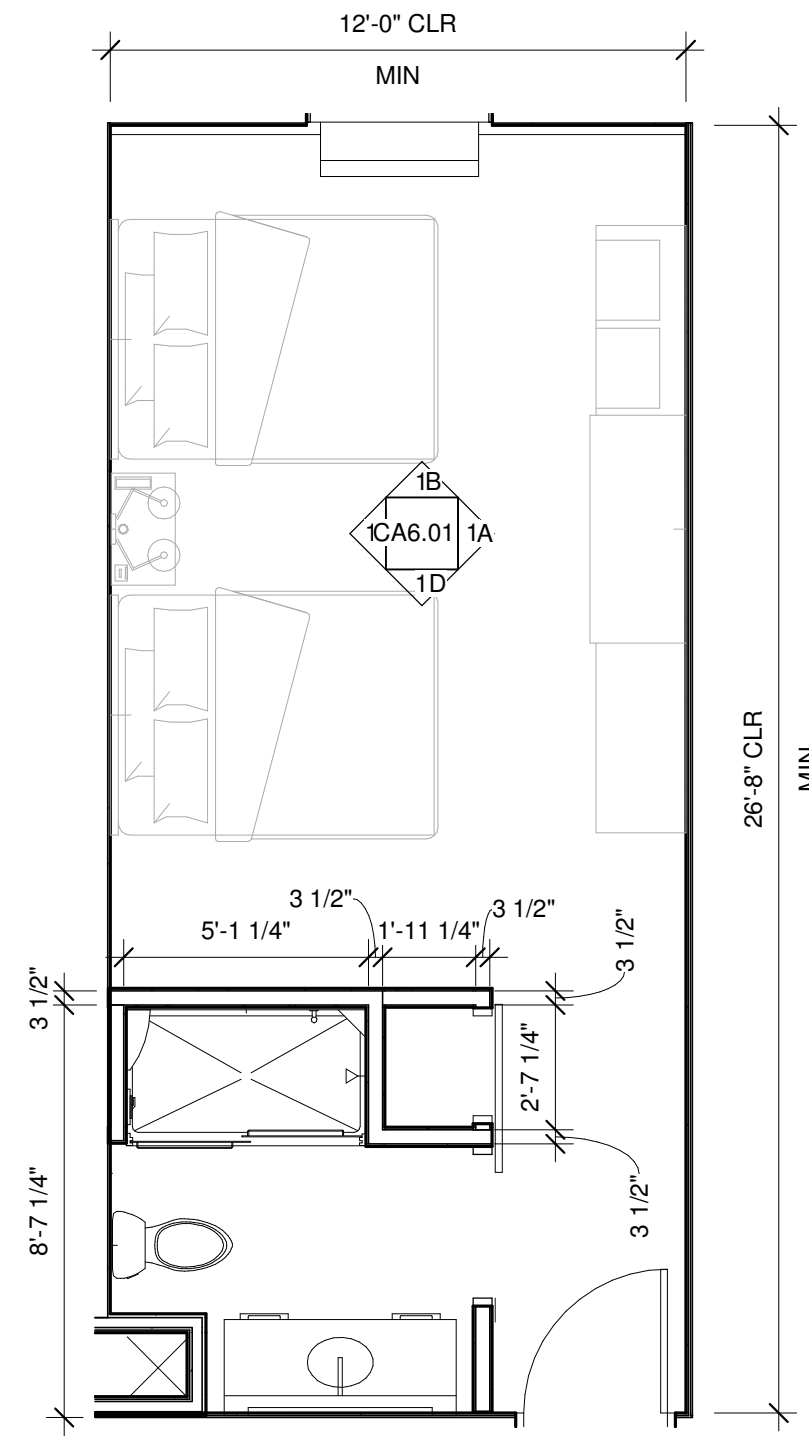
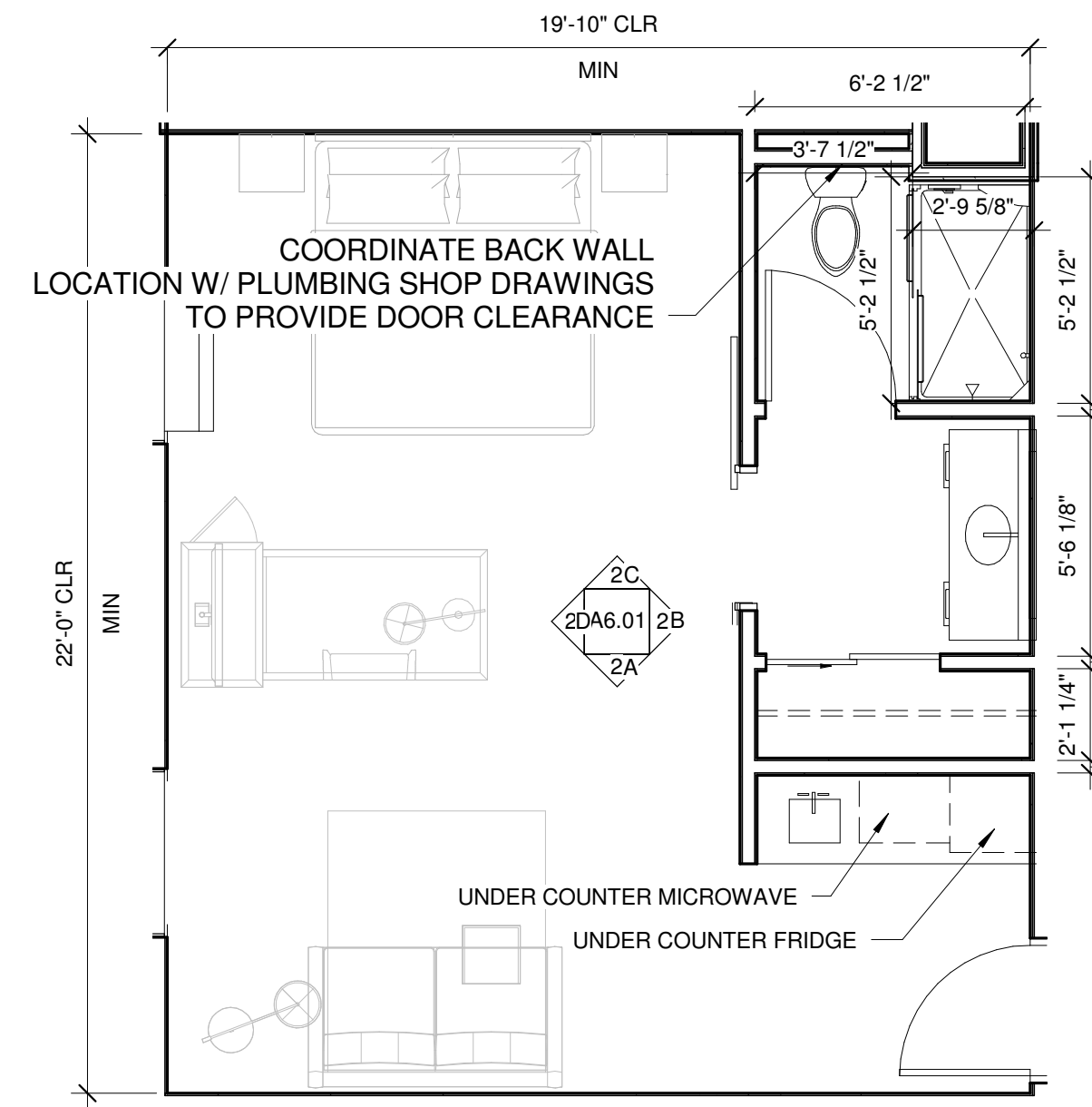


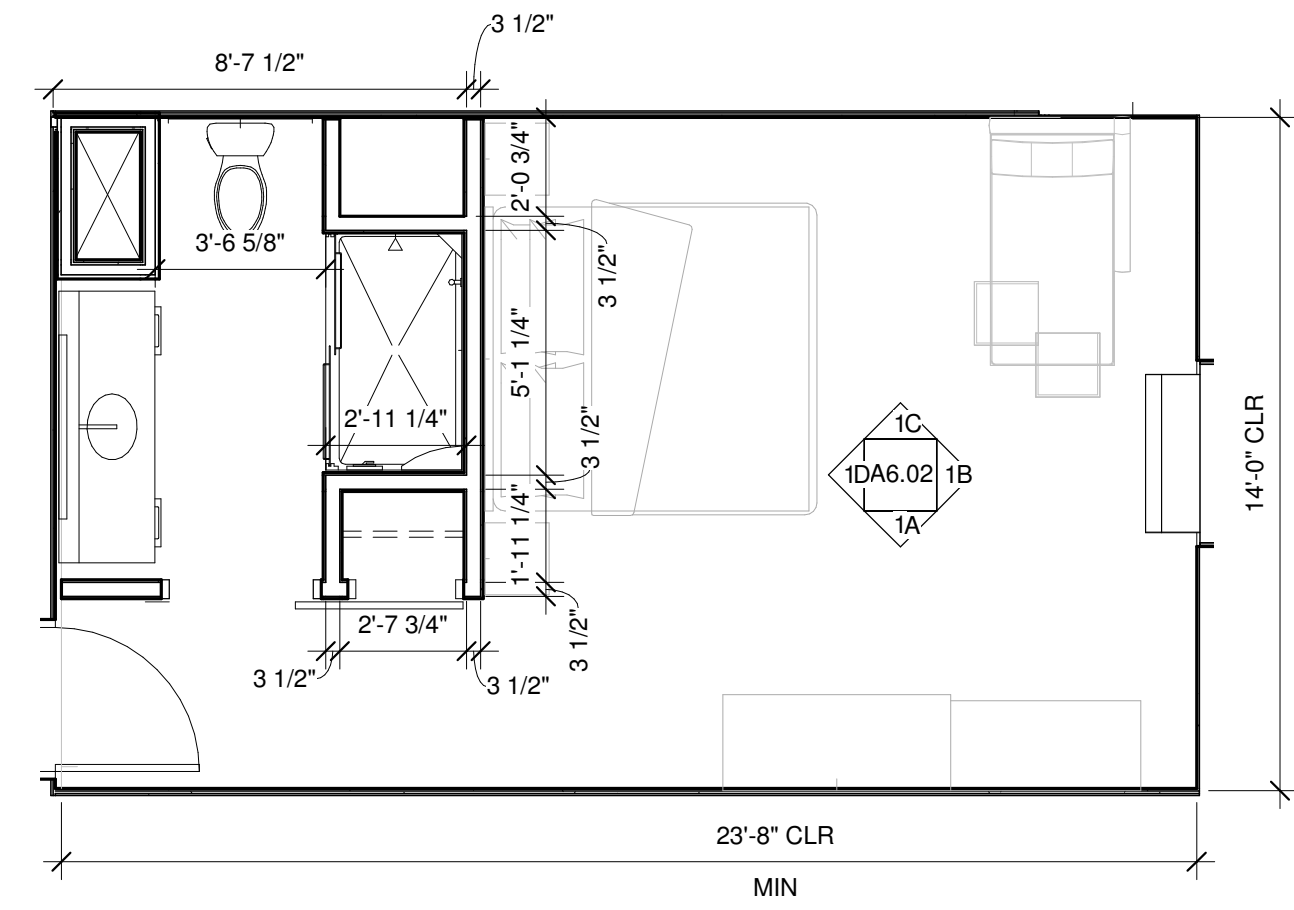
- NOTES:
 1. BATHROOM DIMENSIONS ARE TO STUDS
 2. PROVIDE BLOCKING FOR HEADBOARD AND SIDE TABLES. COORDINATE W/ I.D.
 3. VERIFY SIZES OF PLUMBING FIXTURES PRIOR TO CONSTRUCTION TO CONFIRM FRAMING DIMENSIONS



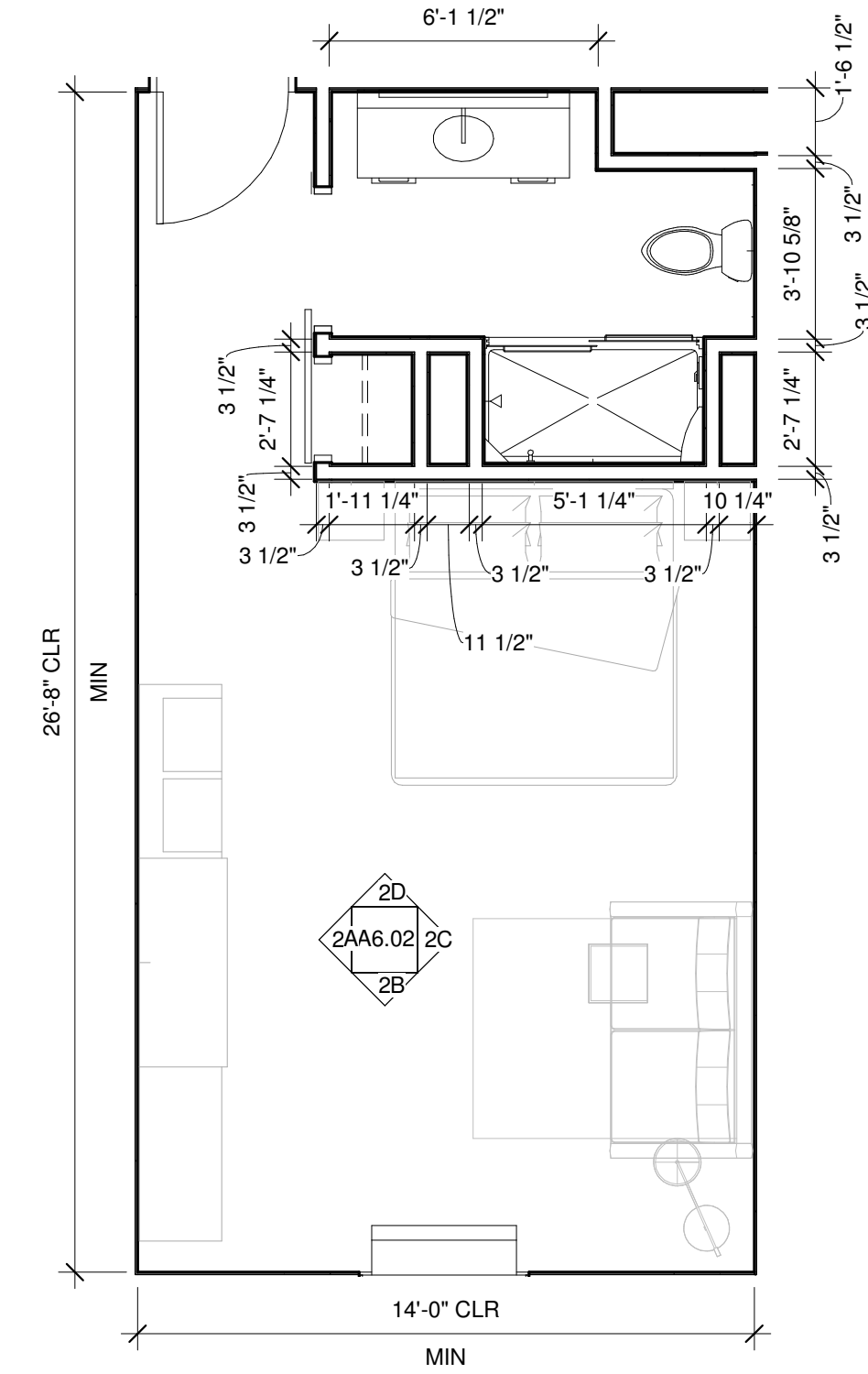
3 | DOUBLE QUEEN - ENLARGED
 1/4" = 1'-0"



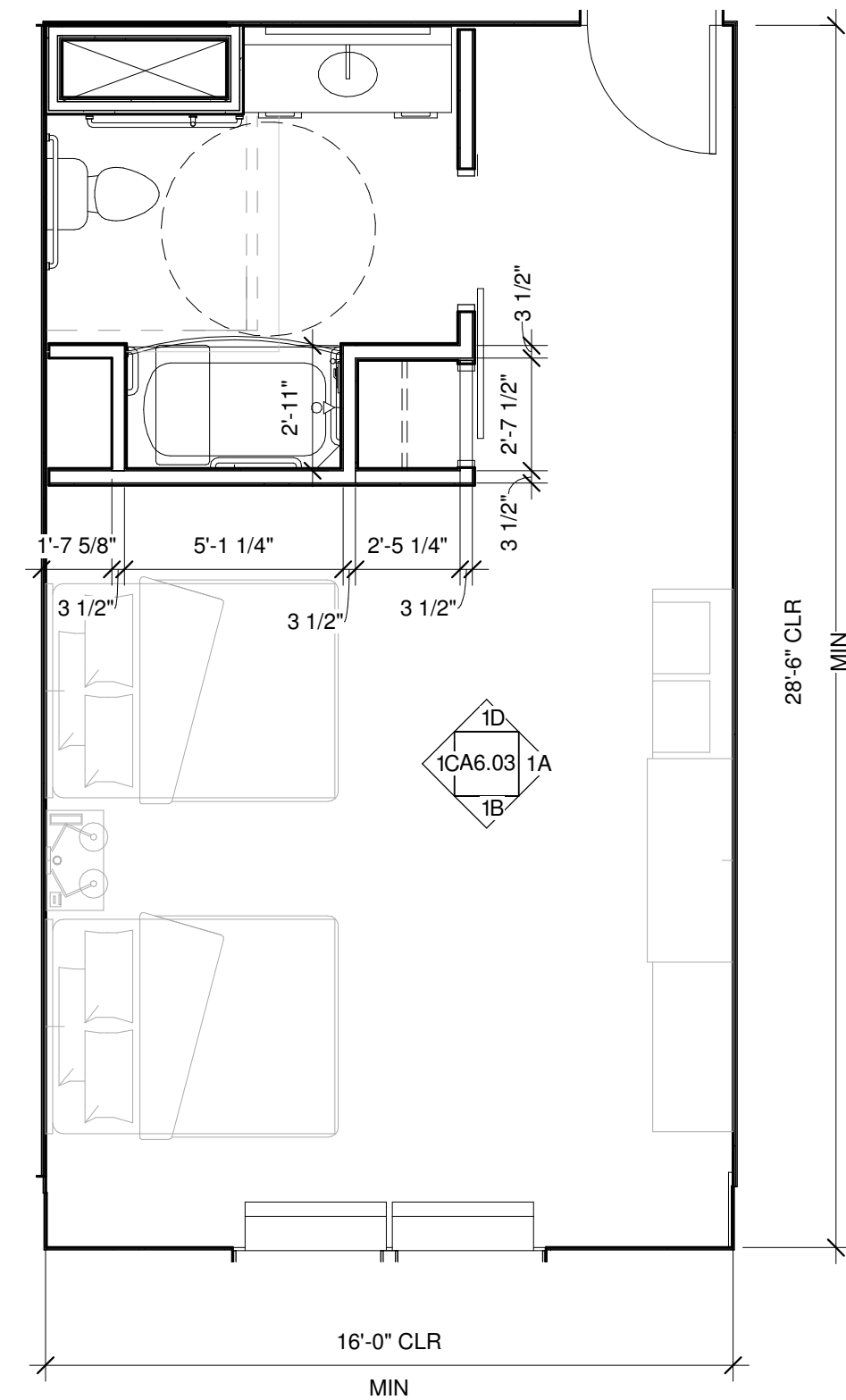
2 | KING STUDIO - ENLARGED
 1/4" = 1'-0"



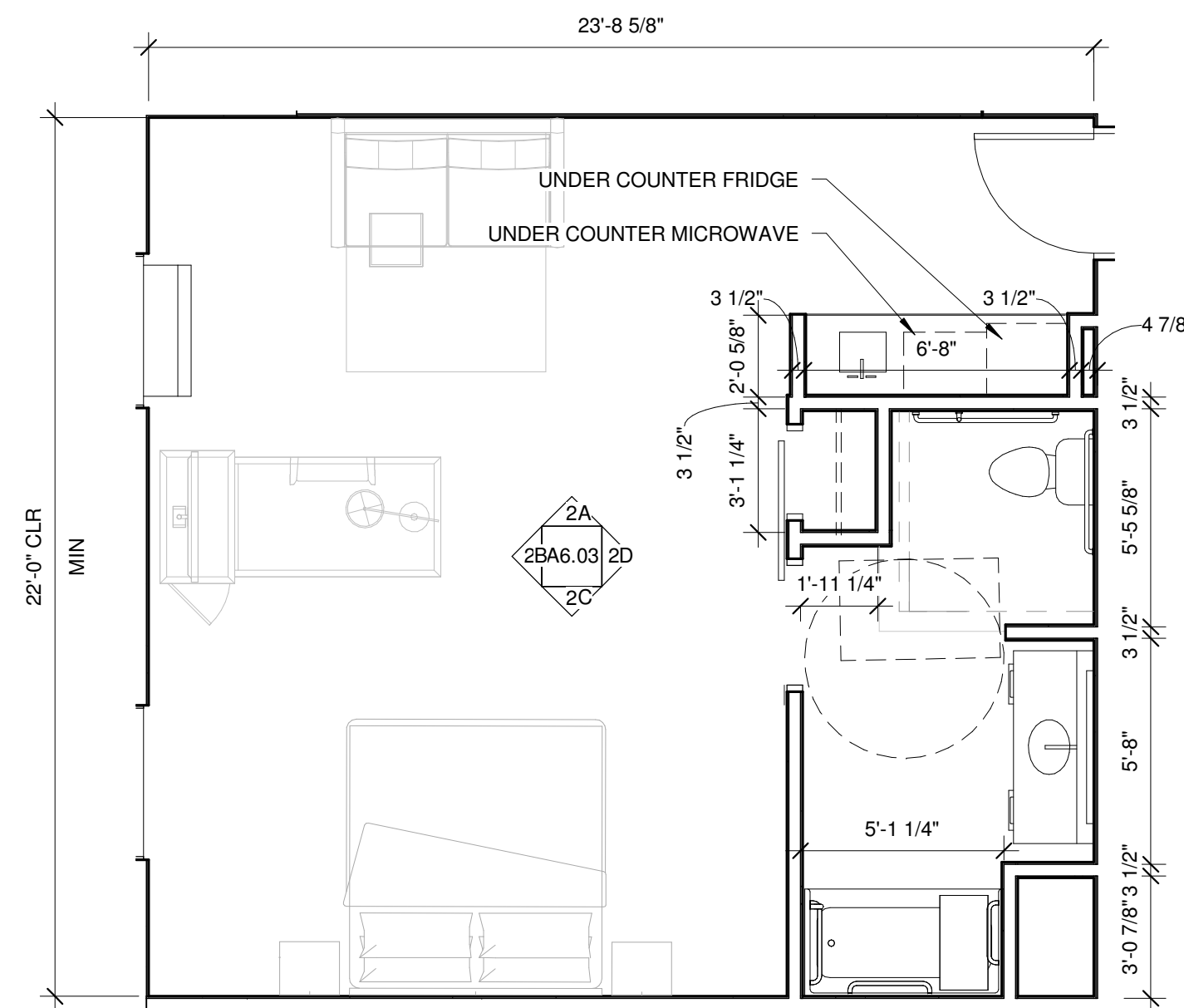
5 | KING - ENLARGED
 1/4" = 1'-0"



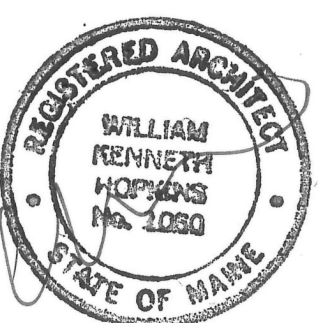
1 | KING SOFA - ENLARGED
 1/4" = 1'-0"



4 | DOUBLE QUEEN ADA - ENLARGED
 1/4" = 1'-0"



6 | KING STUDIO ADA - ENLARGED
 1/4" = 1'-0"



Prepared For:
PORTLAND HOTEL, INC
 Address
 City, State

Consultant:
ARCHETYPE architects
 48 Union Wharf Portland, Maine 04101
 (207) 772-6022 ARCHETYPE@ARCHETYPEPA.COM

Project:
HAMPTON INN & SUITES
 1200 Brighton Ave
 Portland, ME

Revisions:
 2 10 FEB 2016 SUB TO CITY

Date: 12-23-2015
 Scale: 1/4" = 1'-0"
DIMENSIONED UNIT PLANS

A6.00