

PORTLAND HOTEL, INC

Prepared For:

Consultant:

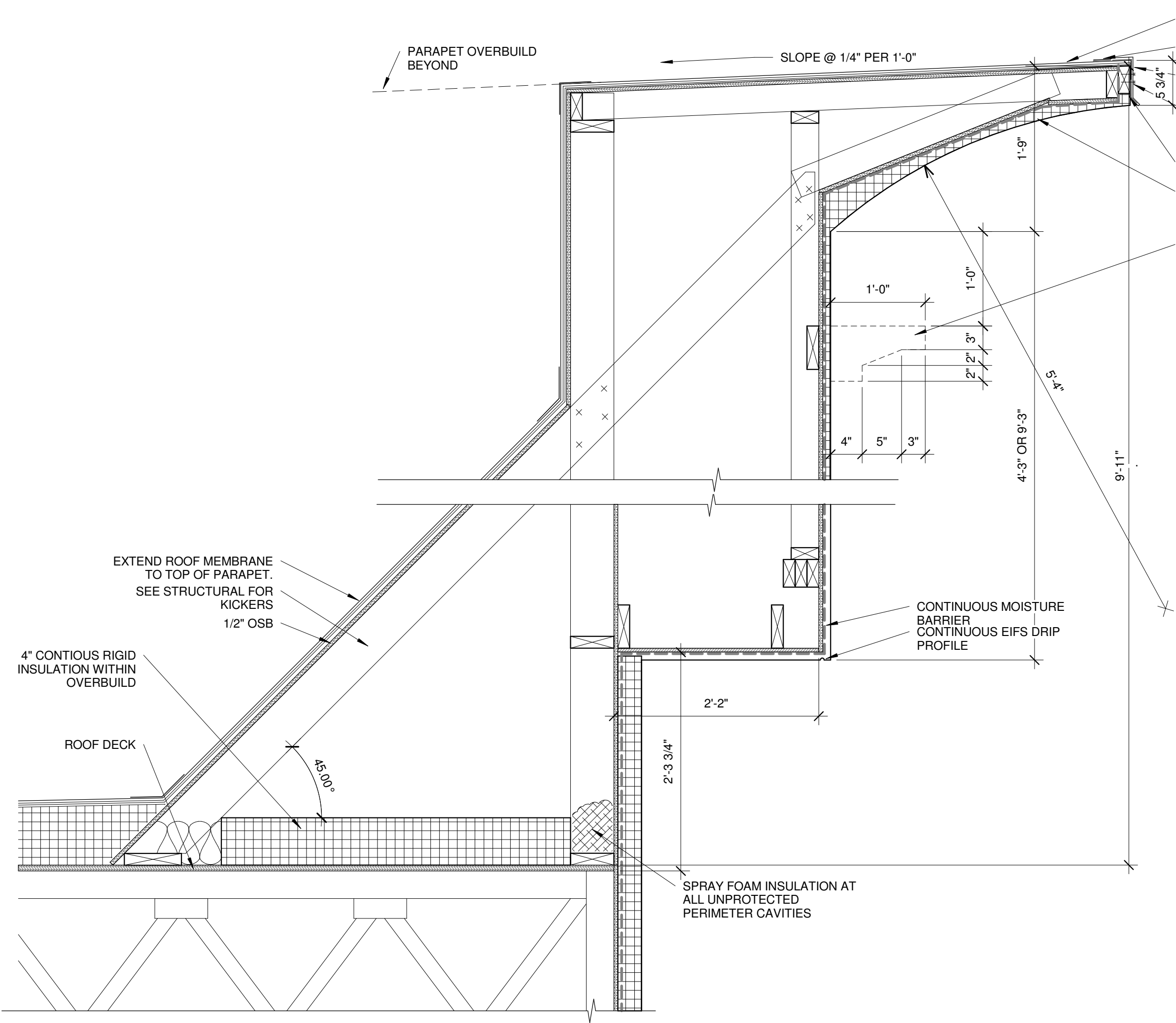
Architect: **ARCHETYPE** architects
48 Union Wharf Portland, Maine 04101
(207) 772-6022 ARCHETYPE@ARCHETYPEDA.COM

Project: **HAMPTON INN & SUITES**
1200 Brighton Ave
Portland, ME

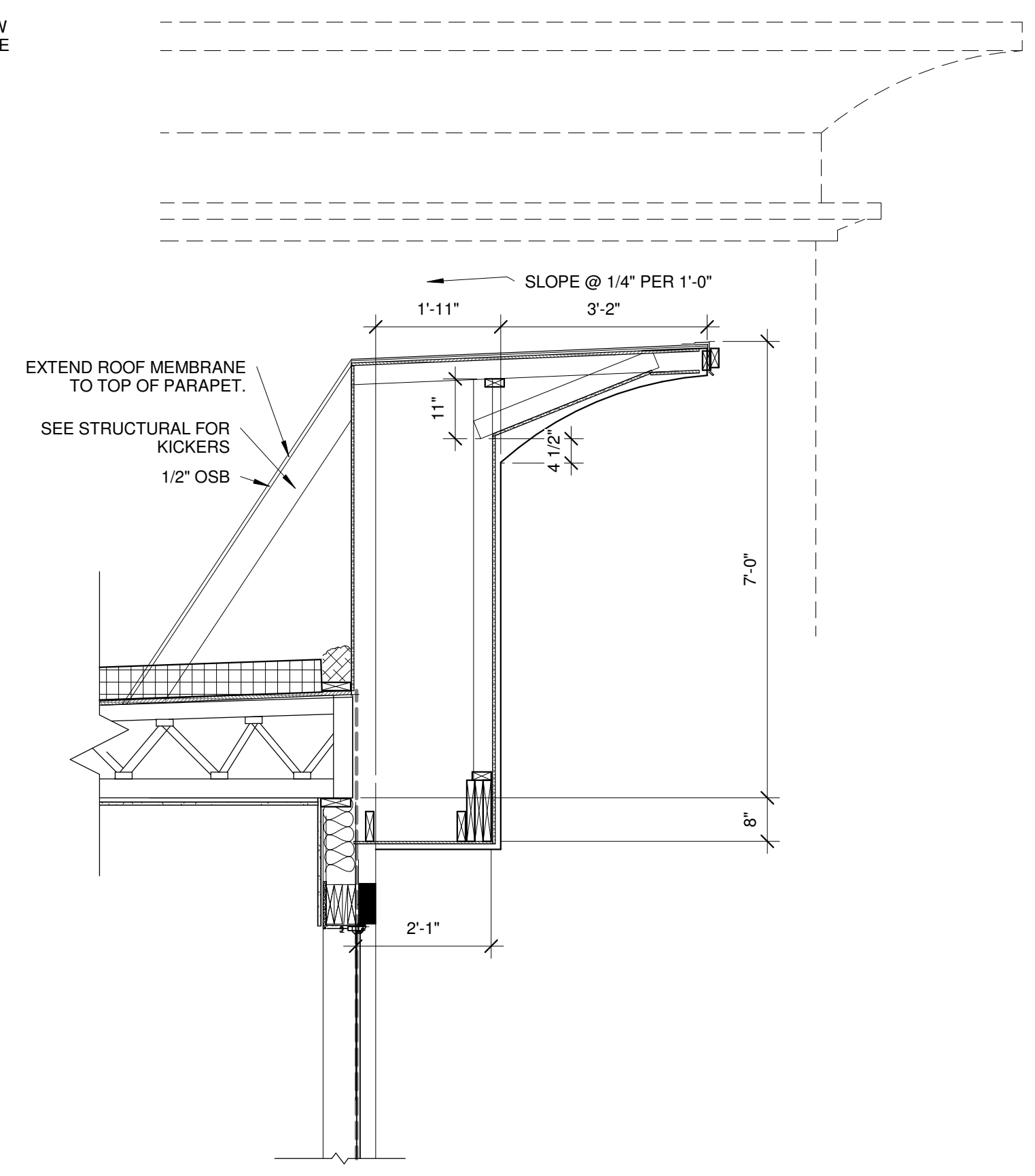
Revisions:
2 10 FEB 2016 SUB TO CITY

Date: 12-23-2015
Scale: As indicated
EXTERIOR DETAILS

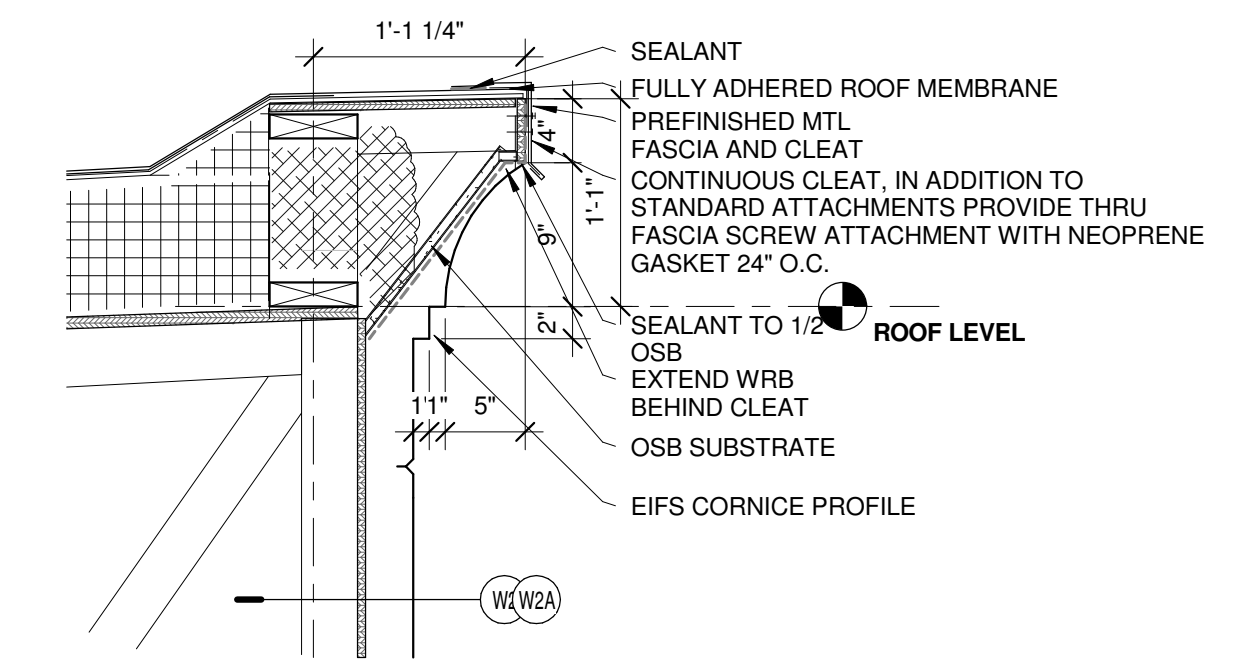
A5.01



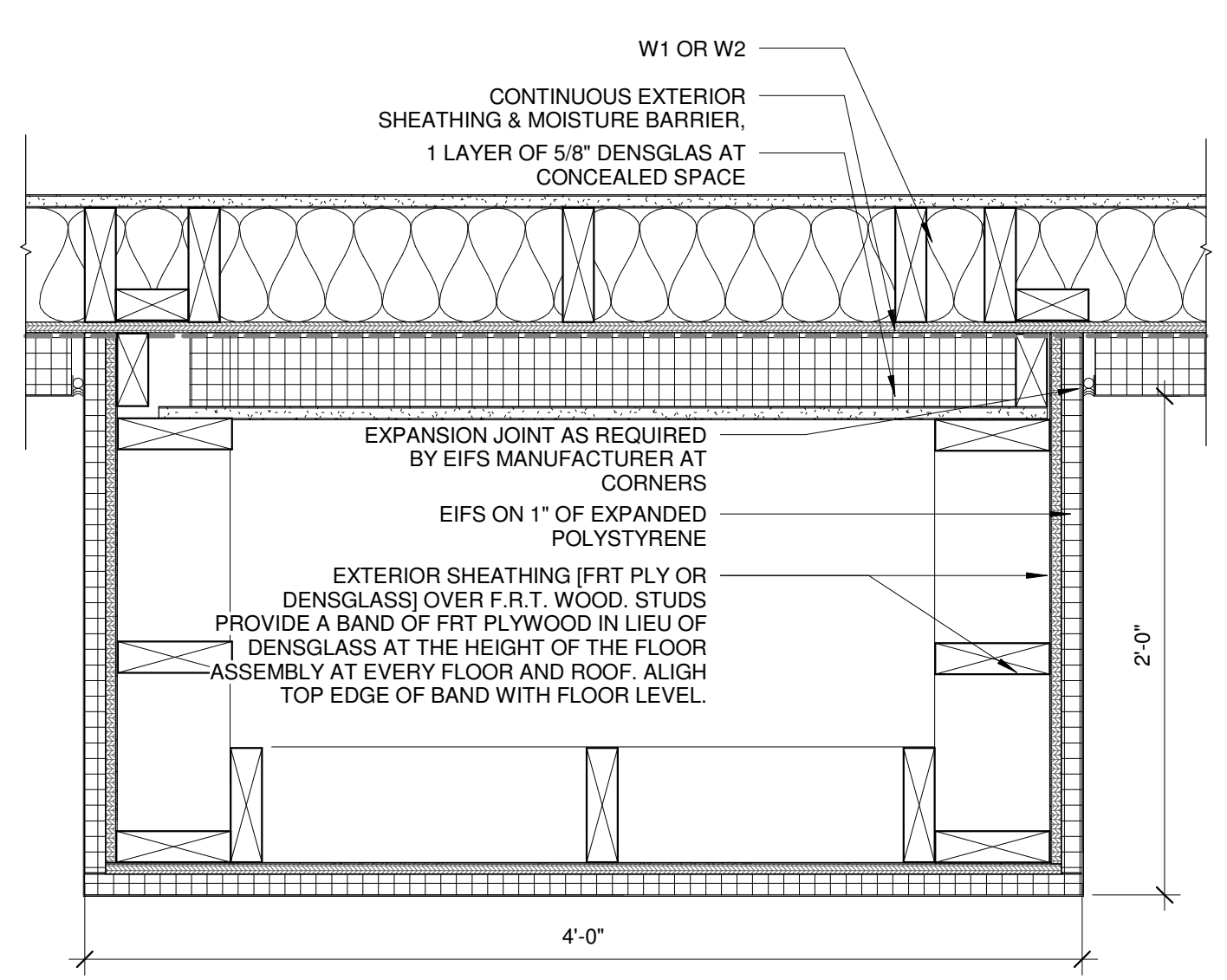
1 | PARAPET OVERBUILD
1" = 1'-0"



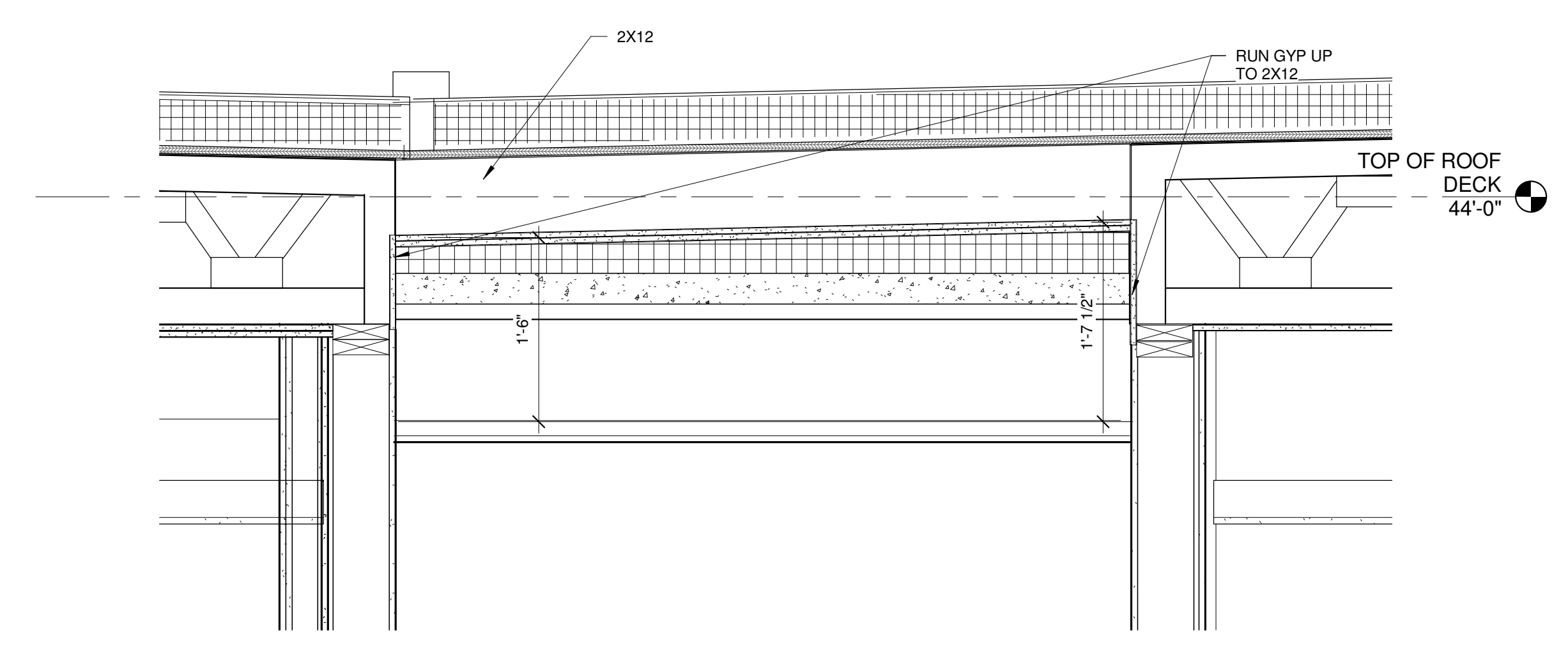
5 | LOWER PARAPET
1/2" = 1'-0"



6 | TYPICAL CORNICE
1" = 1'-0"



3 | EIFS COLUMN SURROUND DETAIL
1 1/2" = 1'-0"



2 | TYP BUILDING SECTION - Callout 1
1" = 1'-0"