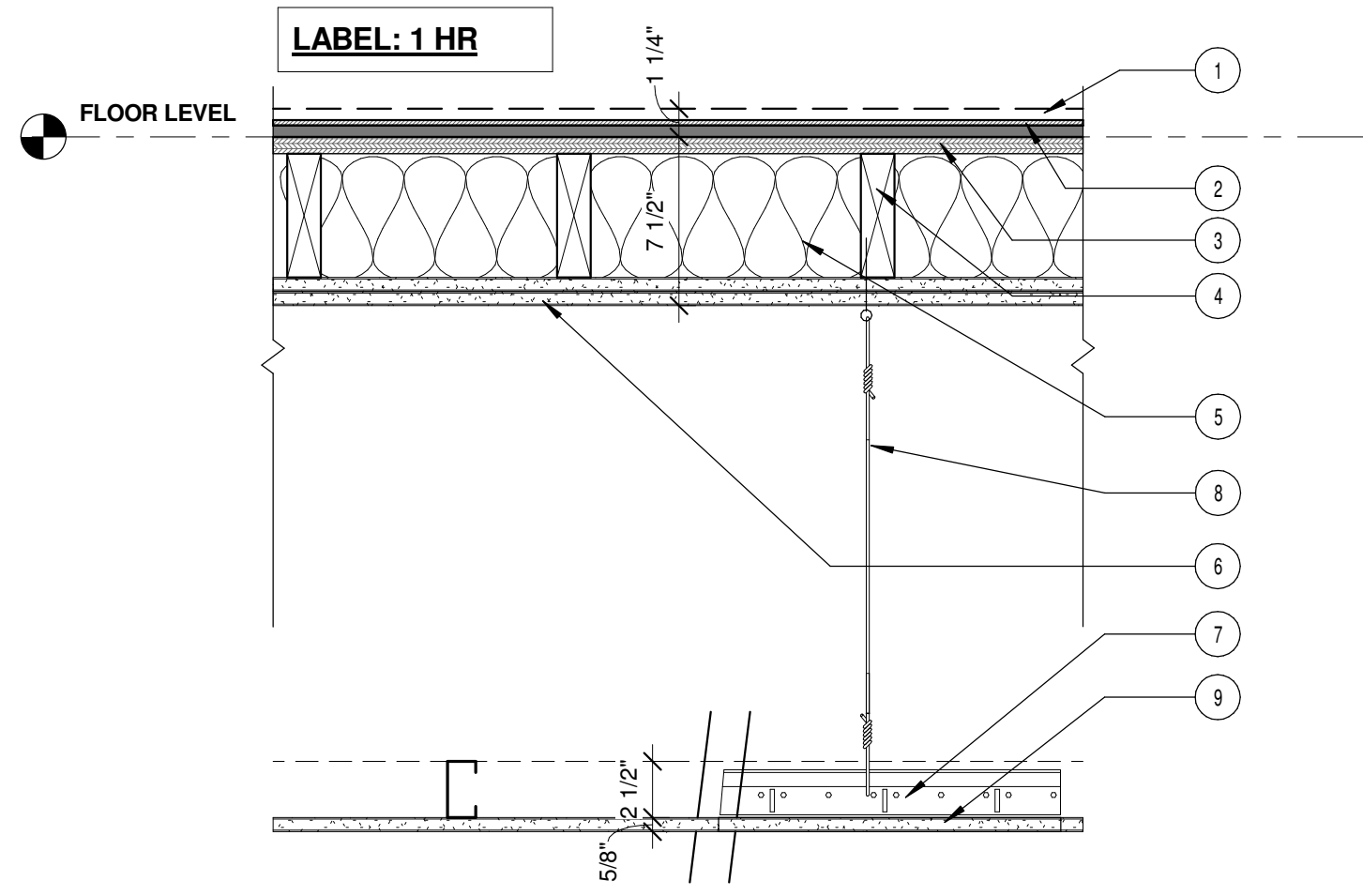


- W2** 1HR - BEARING EXTERIOR WALL
 DESIGN NUMBER - UL L528
 STC SOUND - N/A
- WOOD FRAMING - WOOD STUDS, NOM. 2 IN BY 6 IN., DOUBLE TOP PLATE AND SINGLE BASE PLATE, SEE STRUCTURAL FOR; STUD LAYOUT BRACING, AND FASTENERS.
 - BATT INSULATION - F19 FIBER GLASS BATT INSULATION PACKED TIGHT INTO WALL CAVITY
 - OSB
 - 2" POLY ISO
 - SPRAY APPLIED AIR/MOISTURE BARRIER
 - BRICKFAST MCN PANEL - G90 RATING
 - THIN BRICK APPLIED TO BRICKFAST MCN PANEL
 - GYPSUM BOARD - (1) LAYER 5/8" GYP. BD.
 - SILL SEALER
 - CONCRETE FOUNDATION WALL
 - VAPOR BARRIER - BELOW SLAB (SEE STRUCTURAL SPEC)
 - 2" RIGID POLYSTYRENE INSULATION
 - ALUM DRIP FLASHING
 - STRAPPING

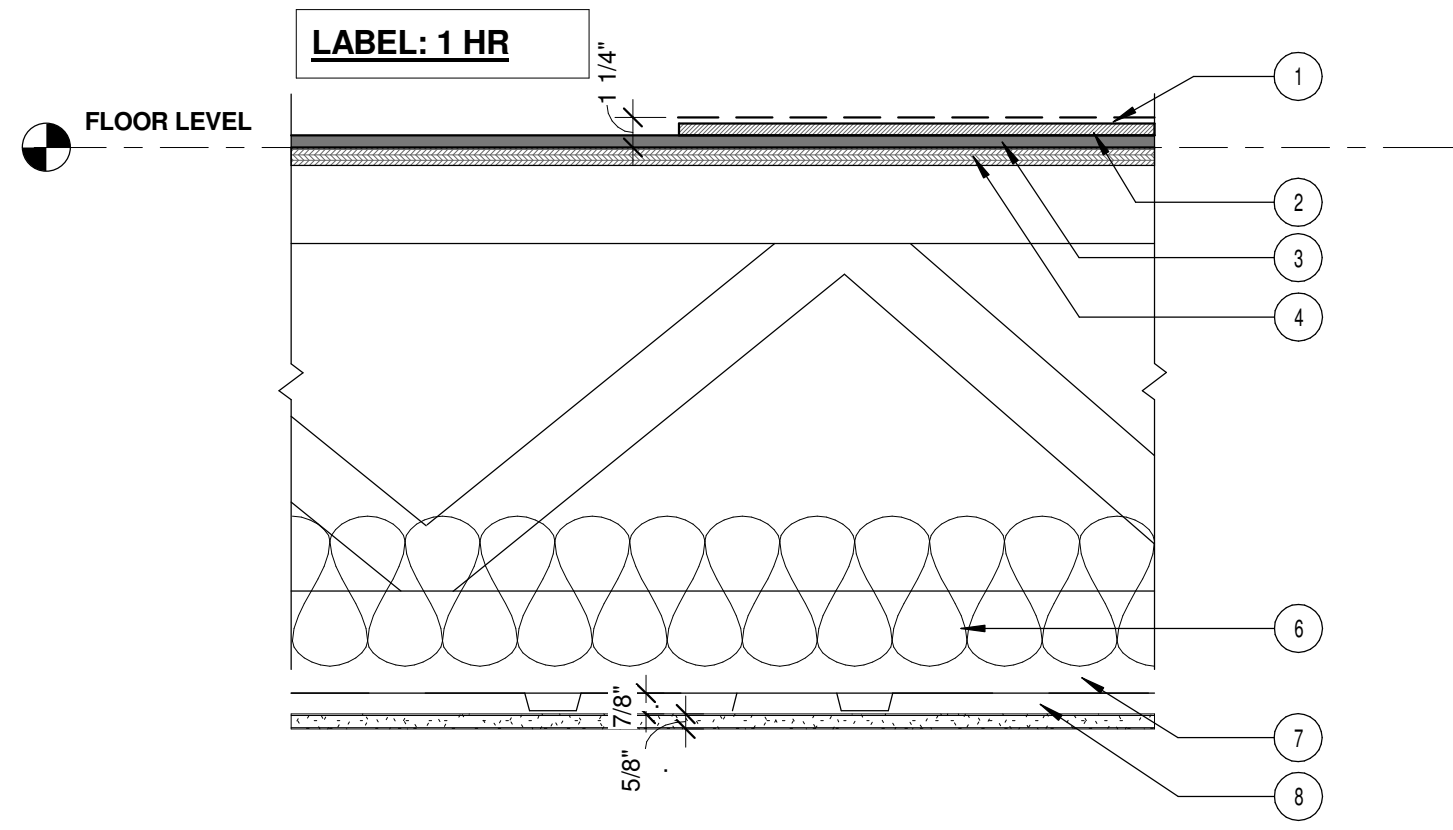
NOTES
 1. SEE EXT. DETAILS FOR THRU FLASHING, ACCESSORIES, AND DETAILS
 2. ALIGN INTERIOR FACE OF WOOD STUD WITH INTERIOR FACE OF FOUNDATION WALL

1 | W10 - EXTERIOR THIN BRICK
 1 1/2" = 1'-0"



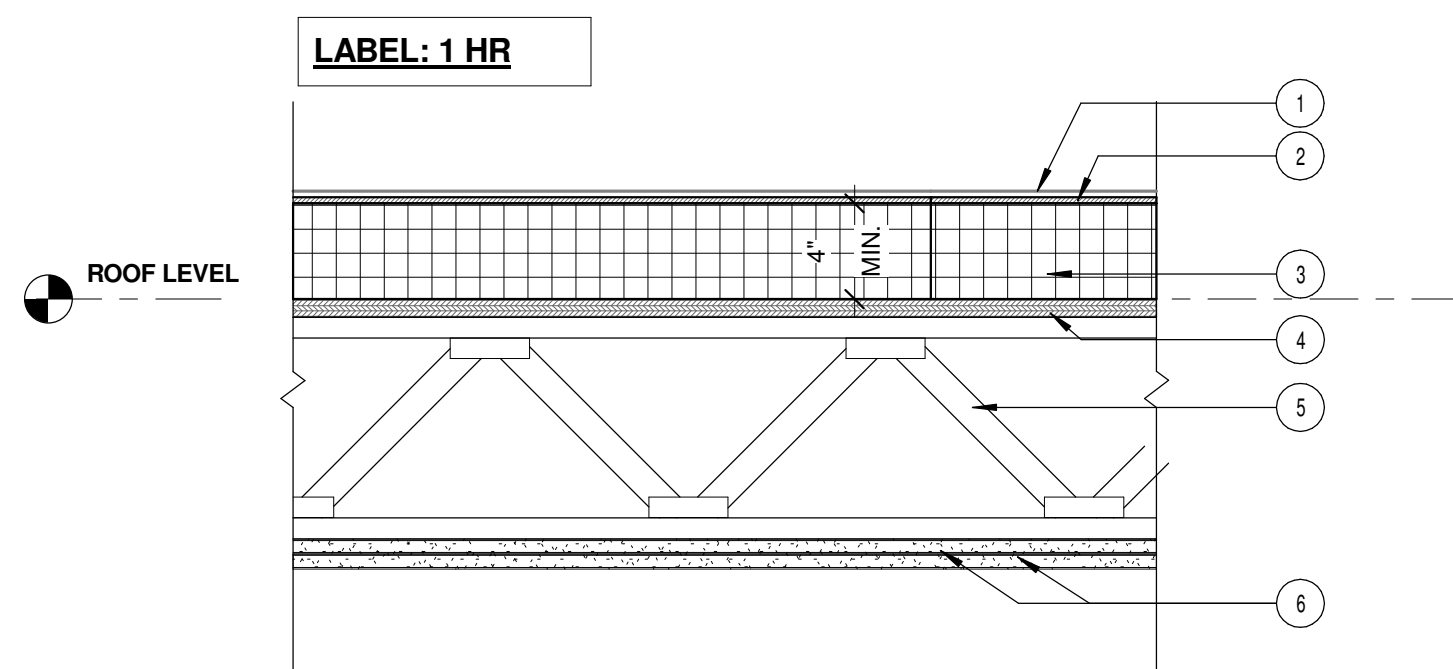
- F1** FLOOR SYSTEM - CORRIDOR
 STC SOUND - N/A
 1 HR GYP ASSOCIATION MEMBRANE SYSTEM
- FINISH FLOOR - CARPET OR TILE
 - 3/4" GYPCRETE
 - 3/4" T&G PLYWOOD SHEATHING
 - FLOOR DECK FRAMING - 2X8 @ 16" O.C.
 - 8" BATT INSUL
 - GYPSUM BOARD - (2) LAYER 5/8" GYP. BD. TYPE X, BASE LAYER APPLIED WITH 1 1/4" TYPE S SCREWS 24" O.C. FACE LAYER APPLIED WITH 1 7/8" TYPE S GYPSUM SCREWS 12" O.C.
 - CEILING FRAMING, SYSTEM A - 2 1/2" MTL STUD, SEE MANF. RECOMMENDATIONS ON FRAMING AND GAUGE - (LESS THAN 6'-1" SPAN)
 - CEILING FRAMING, SYSTEM B - SUSPENDED CEILING SYSTEM - SEE SPECIFICATIONS
 - GYPSUM BOARD - (1) LAYER 5/8" GYP. BD. OR ACT

3 | F1 - TYP CORRIDOR
 1 1/2" = 1'-0"



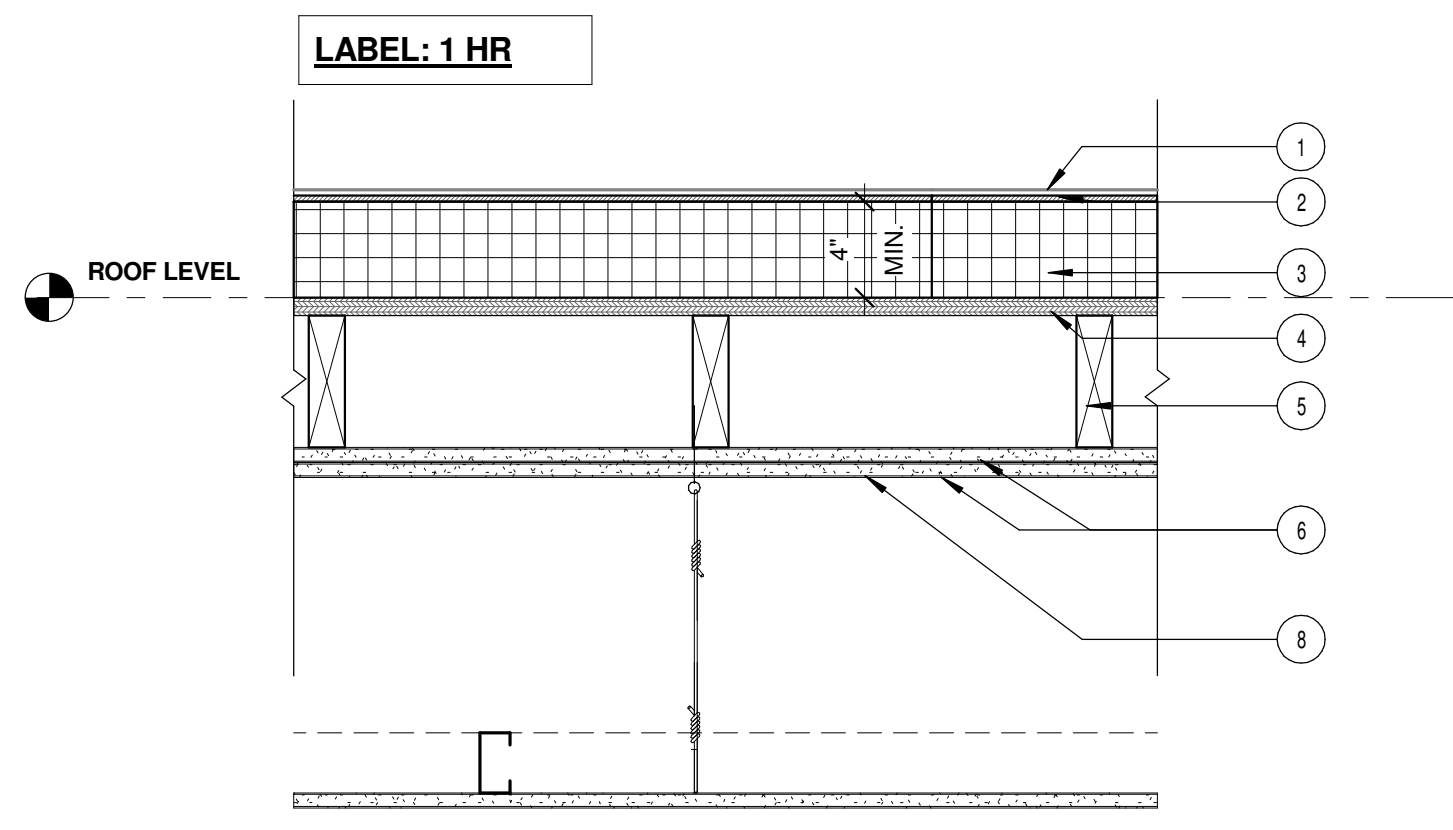
- F2** FLOOR/CEILING ASSEMBLY
 DESIGN NUMBER - CS012
 STC 60 - ICC 82 W/ CARPET AND PAD
- FINISH FLOOR - CARPET OR TILE
 - 3/4" GYPCRETE
 - 1/4" SOUND MAT - AT TILE
 - FLOOR SHEATHING - 3/4" T&G PLYWOOD SHEATHING, SEE STRUCTURAL FOR FASTENERS
 - WOOD TRUSSES
 - SOUND ATTENUATION BATT - 6.25" FIBER GLASS BATT INSULATION
 - RESILIENT CHANNEL - 24" O.C. W/ 1 1/4" TYPE S SCREWS
 - 5/8" GYPSUM BD FIRECODE TYPE C

4 | F2 - TYP TRUSS
 1 1/2" = 1'-0"



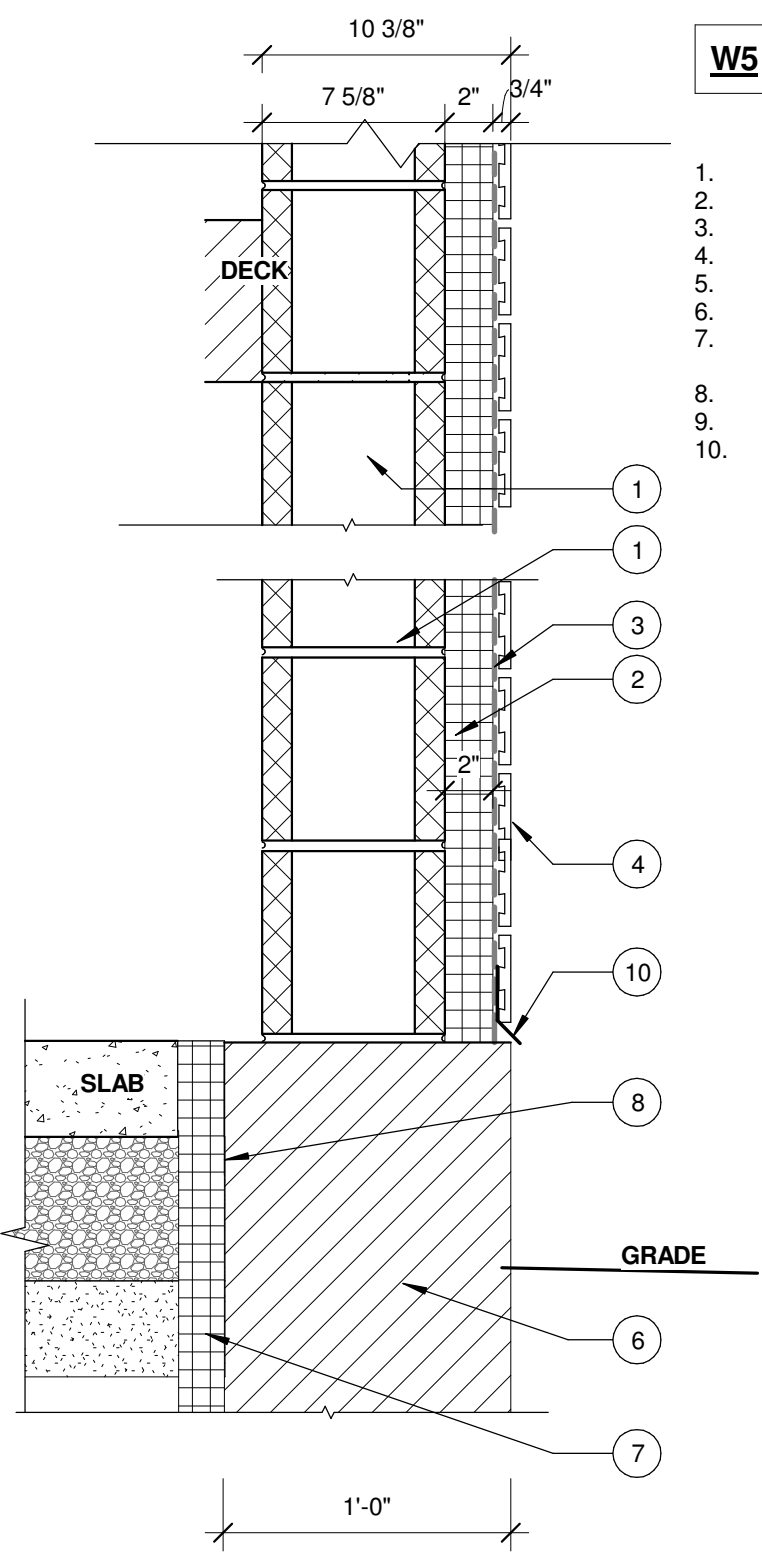
- R1** ROOF SYSTEM - TYPICAL
 THERMAL - R-20 (CONTINUOUS INSULATION)
 GA RC 2601
- ROOF MEMBRANE - FULLY ADHERED ROOF MEMBRANE
 - UNDERLAYMENT - 1/2" HIGH DENSITY FIBER BOARD
 - INSULATION - 4" MIN POLY ISO, TAPERED @ DRAINS
 - ROOF SHEATHING - OSB SHEATHING, SEE STRUCTURAL FOR FASTENERS.
 - SLOPED TRUSS - 1/4" PER 1'-0"
 - GYPSUM BOARD - (2) LAYER TYPE X 5/8" GYP. BD.
 - TAPE AND COMPOUND

5 | R1- ROOF SYSTEM TYPICAL
 1 1/2" = 1'-0"



- R2** ROOF SYSTEM - CORRIDOR
 THERMAL - R-20 (CONTINUOUS INSULATION)
 GA RC 2601
- EPDM
 - 1/2" HIGH DENSITY FIBER BOARD
 - 4" MIN POLY ISO, TAPERED @ DRAINS
 - SHEATHING
 - ROOF DECK FRAMING - 2X8, SEE STRUCTURAL DRAWINGS FOR; LAYOUT, BRACING, AND FASTENERS.
 - (2) LAYER TYPE X 5/8" GYP. BD., BASE LAYER APPLIED WITH 1 1/4" TYPE S SCREWS 24" O.C. FACE LAYER APPLIED WITH 1 7/8" TYPE S GYPSUM SCREWS 12" O.C. OFFSET GYPSUM LAYERS BY 24". LOWER LAYERS TAPED
 - SUSPENDED GYP CLG SYSTEM
 - 5/8" GYP

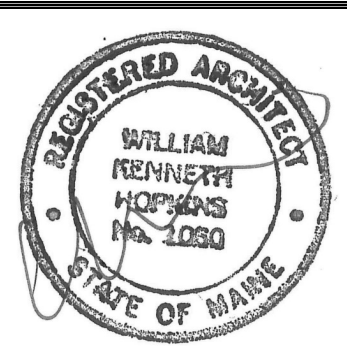
6 | R2- ROOF SYSTEM @ CORRIDOR
 1 1/2" = 1'-0"



- W5** 1HR - BEARING EXTERIOR WALL
 DESIGN NUMBER - UL L528
 STC SOUND - N/A
- D-2 CMU
 - 2" POLY ISO
 - SPRAY APPLIED AIR/MOISTURE BARRIER
 - THIN BRICK APPLIED TO BRICKFAST MCN PANEL. ASTM C-557
 - BRICKFAST MCN PANEL
 - CONCRETE FOUNDATION WALL
 - RIGID INSULATION - CONTINUOUS 4'-0" WIDE SECTION OF 2 IN RIGID POLYSTYRENE INSULATION ALONG PERIMETER OF HEATED SPACES
 - VAPOR BARRIER
 - 2" RIGID POLYSTYRENE INSULATION TO TOP OF FOOTING
 - ALUM DRIP FLASHING

NOTES:
 1. SEE EXT. DETAILS FOR THRU FLASHING, ACCESSORIES, AND DETAILS
 2. ALIGN INTERIOR FACE OF BLOCK WITH INTERIOR FACE OF FOUNDATION WALL

2 | W11 - EXTERIOR THIN BRICK @ STAIR
 1 1/2" = 1'-0"



Prepared For:
PORTLAND HOTEL, INC

Consultant:
ARCHETYPE architects
 48 Union Wharf Portland, Maine 04101
 (207) 772-0022 ARCHETYPE@ARCHETYPEPA.COM

Project:
HAMPTON INN & SUITES
 1200 Brighton Ave
 Portland, ME

Revisions:
 2 10 FEB 2016 SUB TO CITY

Date: 12-23-2015
 Scale: 1 1/2" = 1'-0"
WALL & FLOOR TYPES

A4.01