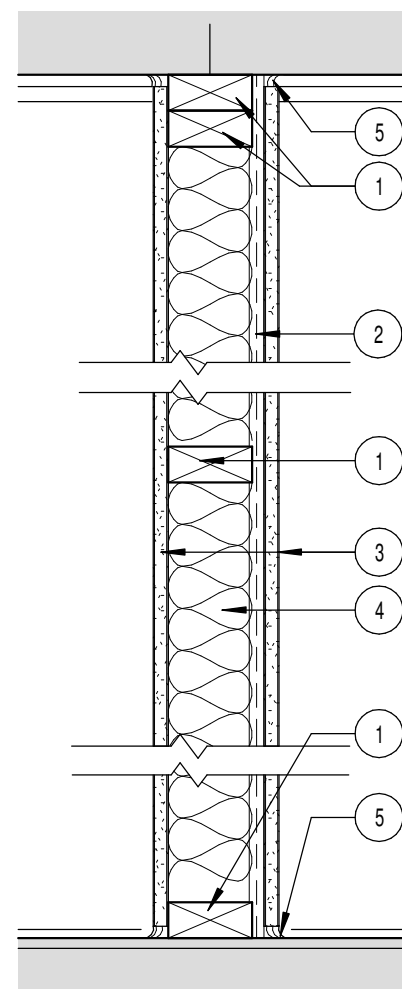


LABEL 1 HR

W1A 2x4
W1B 2x6

1 HR BEARING OR NON BEARING WALL
DESIGN NUMBER - GA FILE NO. WP3243
54 STC SOUND



- WOOD FRAMING - 2x4 OR 2x6 STUDS, DOUBLE TOP PLATE @ BEARING WALLS AND SINGLE BASE PLATE
- RESILIENT CHANNELS - 24" O.C. ATTACHED AT RIGHT ANGLES TO ONE SIDE OF STUDS 24" O.C.
- TYPE X GYP BOARD - 5/8 IN. THICK, GYP BOARD EACH SIDE
- 3" MINERAL OR GLASS FIBER INSULATION
- ACOUSTICAL SEALANT - USG OR EQ.

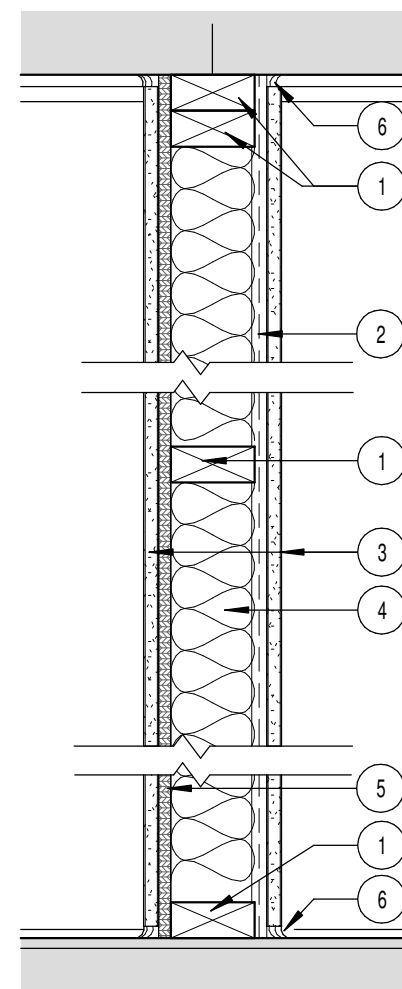
1 | W1 - ACOUSTICAL PARTITION

1 1/2" = 1'-0"

LABEL 1 HR

W2A 2x4
W2B 2x6

1 HR BEARING OR NON BEARING WALL
DESIGN NUMBER - GA FILE NO. WP3243
54 STC SOUND



- WOOD FRAMING - 2x4 OR 2x6 STUDS, DOUBLE TOP PLATE @ BEARING WALLS AND SINGLE BASE PLATE
- RESILIENT CHANNELS - 24" O.C. ATTACHED AT RIGHT ANGLES TO ONE SIDE OF STUDS 24" O.C. WITH 1 1/4" TYPE S DRYWALL SCREWS.
- TYPE X GYP BOARD - 5/8 IN. THICK, GYP BOARD BOTH SIDES
- 3" MINERAL OR GLASS FIBER INSULATION
- 1/2" SHEATHING
- ACOUSTICAL SEALANT - USG OR EQ

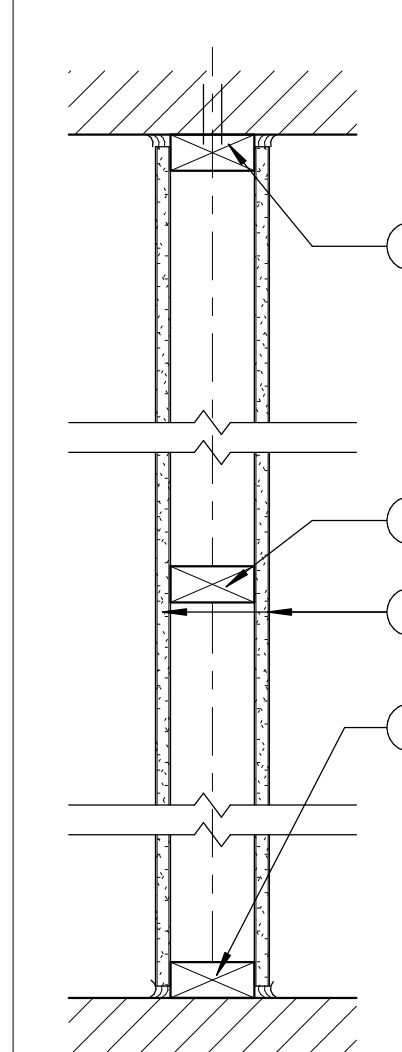
2 | W2 - SHEAR DEMISING WALL

1 1/2" = 1'-0"

LABEL: NONE

W3A 2x4
W3B 2x6

NON-BEARING
DESIGN NUMBER - GA FILE NO. WP 3510
SOUND - N/A



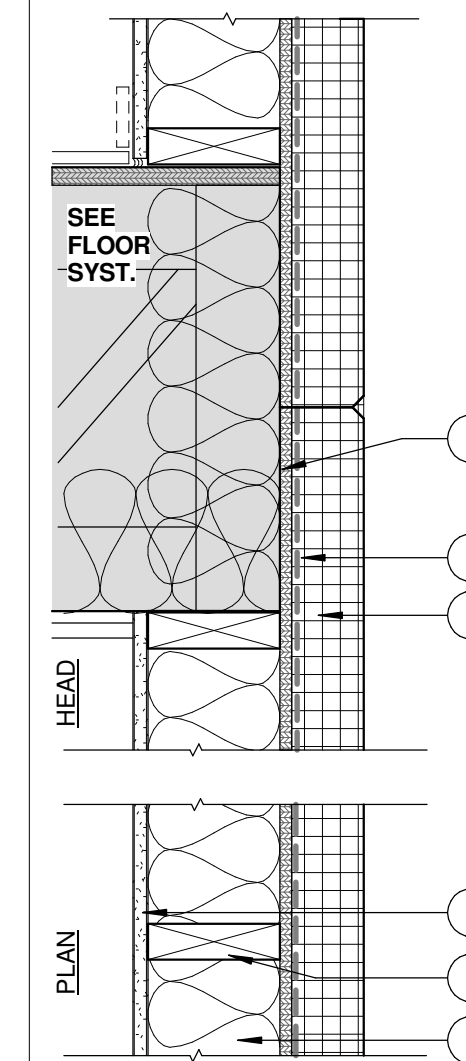
- WOOD FRAMING - WOOD STUDS 16" OR 24" O.C., SINGLE TOP PLATE AND SINGLE BASE PLATE, SEE STRUCTURAL FOR; STUD LAYOUT BRACING, AND FASTENERS.
- GYPSONUM BOARD

3 | W3 - NON-RATED PARTITION

1 1/2" = 1'-0"

LABEL: 1 HR

W4 1HR EXTERIOR WALL - BEARING OR NON-BEARING
STC SOUND - STC 47+/- BASED ON DRYVIT RAL - TAL91-17



- GYPSONUM BOARD - (1) LAYER 5/8" TYPE X GYP. BD., PAPER SURFACED
- WOOD FRAMING - 2x6 WOOD FRAMING, SINGLE TOP STUD
- BATT INSULATION - R13 FIBER GLASS BATT INSULATION PACKED TIGHT INTO WALL CAVITY
- SHEATHING - 7/16" OSB SHEATHING SEE STRUCTURAL FOR MECHANICAL CONNECTION NOTES.
- AIR/MOISTURE BARRIER - INCLUDED W/ EIFS ASSEMBLY
- RIGID INSULATION - 2" POLY ISO
- LOW PERM. PRIMER

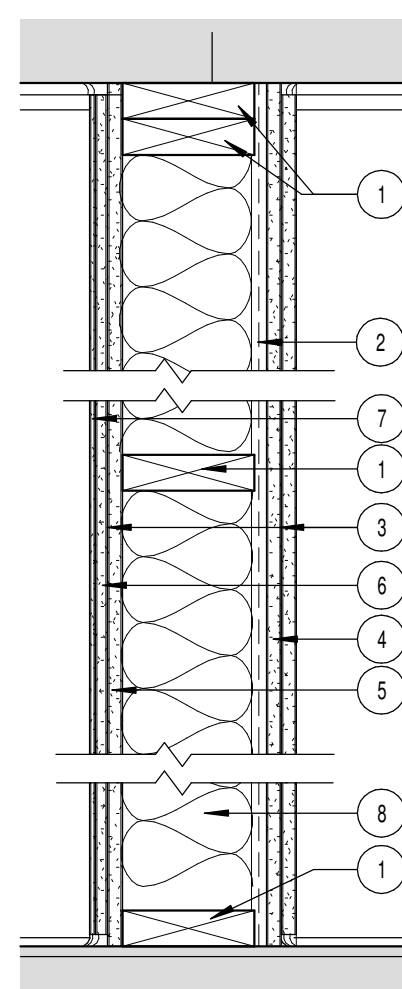
4 | W4 - EXTERIOR EIFS

1 1/2" = 1'-0"

LABEL 1 HR

W5 2x6

1 HR BEARING OR NON BEARING WALL
DESIGN NUMBER - GA FILE NO. WP3011
60 STC SOUND



- WOOD FRAMING - 2x6, DOUBLE TOP PLATE @ BEARING WALL AND SINGLE BASE PLATE
- RESILIENT CHANNELS - 24" O.C. ATTACHED AT RIGHT ANGLES TO ONE SIDE OF STUDS 24" O.C. WITH 1 1/4" TYPE S DRYWALL SCREWS.
- 5/8" TYPE "X" GYP ATTACHED W/ 1" TYPE "S" SCREWS
- 5/8" TYPE "X" GYP APPLIED W/ ADHESIVE 12" V&H
- 5/8" TYPE "X" GYP APPLIED W/ 5D COATED NAILS 1 5/8" LONG, 0.086" SHANK, 1/64" HEADS, 32" O.C.
- 1/2" TYPE "X" GYP APPLIED W/ 8D NAILS 2 3/8" LONG, 0.113 SHANK, 9/32" HEADS @ 12" O.C.
- 3/8" GYP APPLIED W/ 3/4" ADHESIVE 12" O.C. V&H
- 2" 90 PCF GLASS FIBER INSULATION STAPLED TO 3 LAYER SIDE

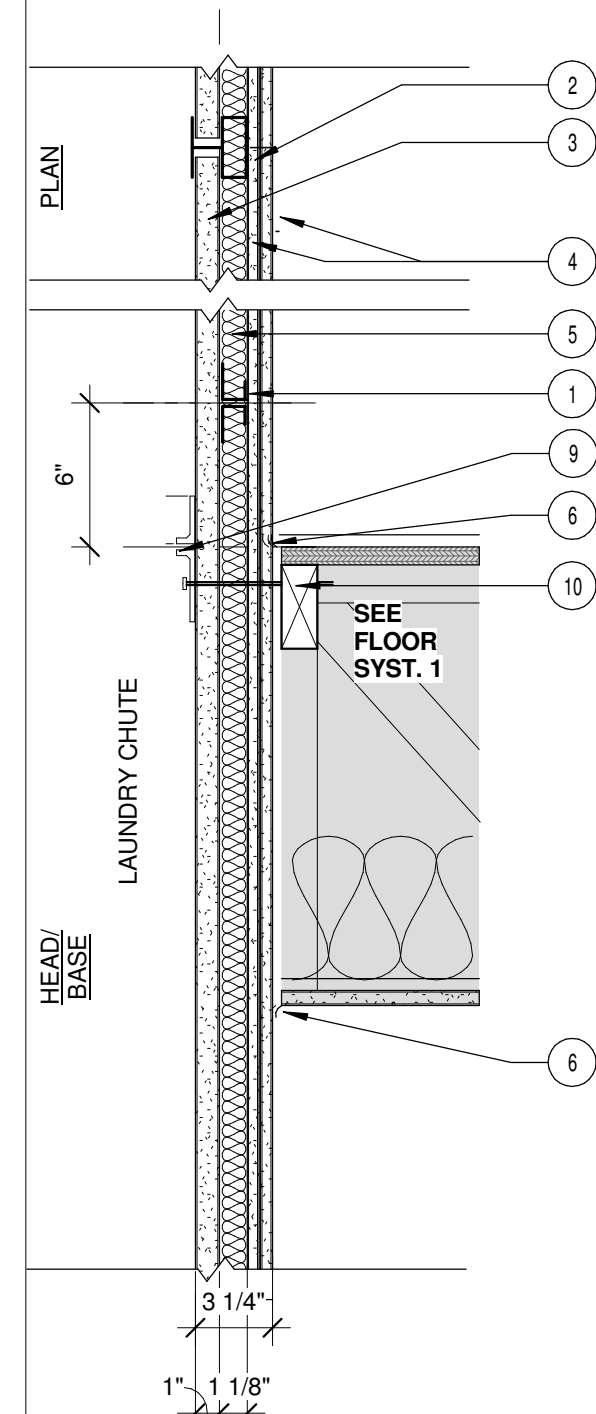
5 | W5 - WALL @ VENDING

1 1/2" = 1'-0"

LABEL 2 HR

W6

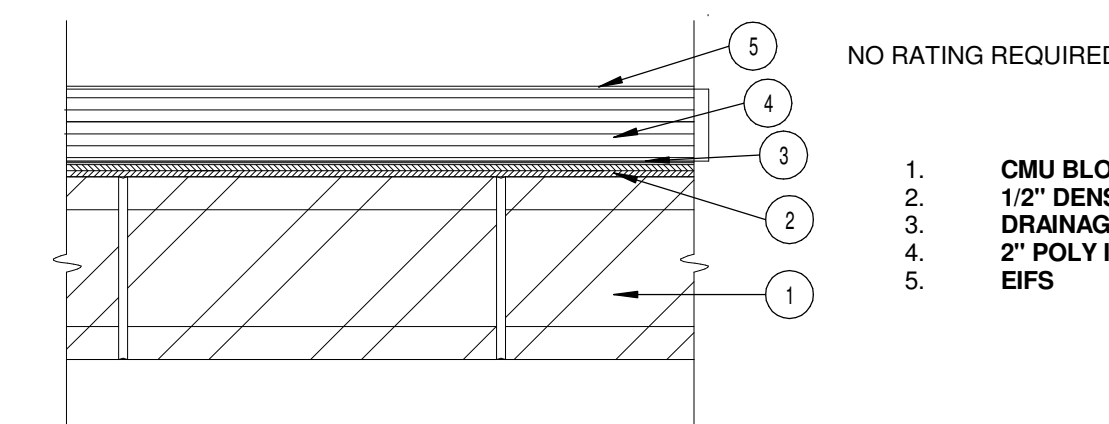
2 HR NON-BEARING SHAFT WALL
48 STC SOUND - BSA 542-68-SM



- FLOOR, SIDE AND CEILING RUNNER - (NOT SHOWN) "J" - SHAPED RUNNER, MIN. 4 IN DEEP, WITH UNEQUAL LEGS OF 1 IN AND 2 IN.
- GYPSONUM BOARD - GYPSONUM LINER PANELS, NOM. 1 IN THICK, 24 IN WIDE, VERTICAL EDGES INSERTED IN "H" PORTION OF "C-H" STUDS.
- GYPSONUM BOARD - (2) 1/2 IN. THICK, BRAND FIRECODE C
- SOUND BATT - MIN. 3 IN THICK U.L. LABELED MINERAL WOOL BATT INSULATION.
- TAPE AND COMPOUND
- LINEN CHUTE SUPPORT - SEE MANF. SHOPS
- BLOCKING - FOR CHUTE ANGLE SUPPORT

6 | W6 - SHAFT WALL @ LAUNDRY CHUTE

1 1/2" = 1'-0"

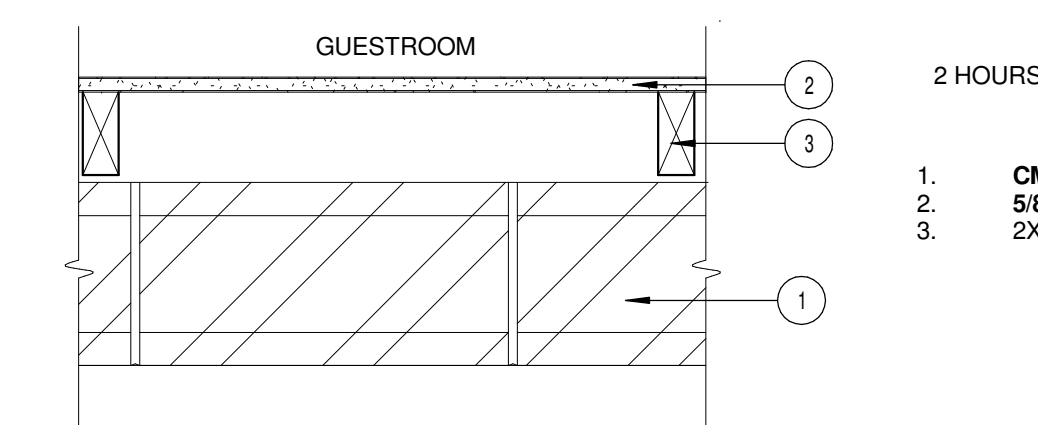


NO RATING REQUIRED

- CMU BLOCK (D-2)
- 1/2" DENSGLASS
- DRAINAGE PLANE
- 2" POLY ISO
- EIFS

7 | W7 - EXTERIOR WALL @ STAIR

1 1/2" = 1'-0"

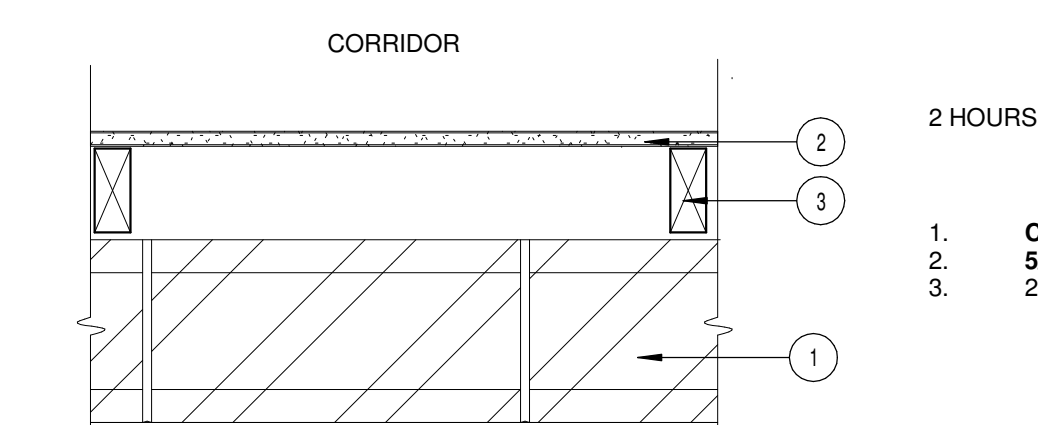


2 HOURS

- CMU BLOCK (D-2)
- 5/8" GYP
- 2x4 @ 2'-0" O.C.

8 | W8 - STAIR @ GUESTROOM

1 1/2" = 1'-0"



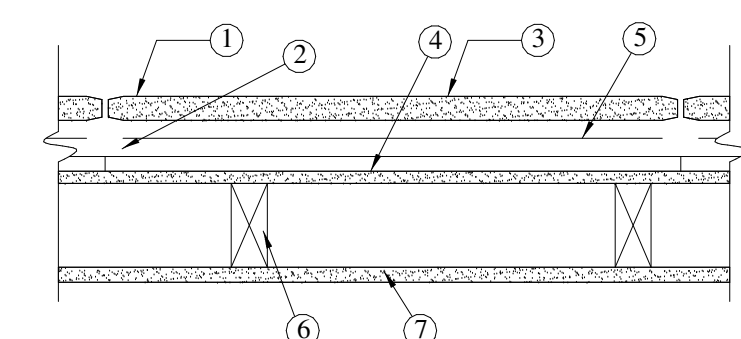
2 HOURS

- CMU BLOCK (D-2)
- 5/8" GYP
- 2x4

9 | W9 - STAIR @ CORRIDOR

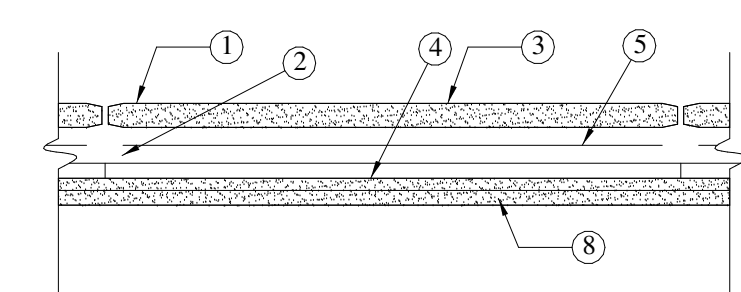
1 1/2" = 1'-0"

NOTE:
1. SEE SPECIFICATIONS SECTION ??? FOR DETAILED U.L. WALL ASSEMBLIES
2. SEE STRUCTURAL DWGS FOR SIZES & ATTACHMENTS



W12a 2 HOUR NON-BEARING SHAFT WALL

6. 2 x 4 wood stud
7. 5/8" gypsum board

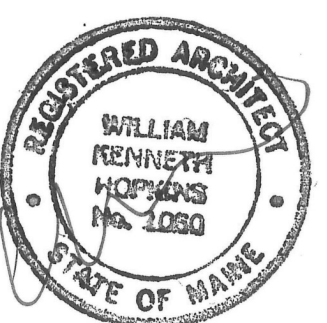


W12b 2 HOUR NON-BEARING SHAFT WALL

8. add 1 layer 5/8" moisture resistant gypsum board

10 | W12 - SHAFT WALL

1 1/2" = 1'-0"



Prepared For:
PORTLAND HOTEL, INC
Address
City, State

Consultant:

Architect:
ARCHETYPE architects
48 Union Wharf Portland, Maine 04101
(207) 772-0022 ARCHETYPE@ARCHETYPEPA.COM

Project:
HAMPTON INN & SUITES
1200 Brighton Ave
Portland, ME

Revisions:
2 10 FEB 2016
SUB TO CITY

Scale:
1 1/2" = 1'-0"

Date:
12-23-2015

WALL TYPES

A4.00