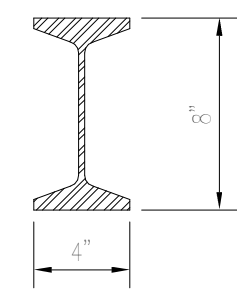
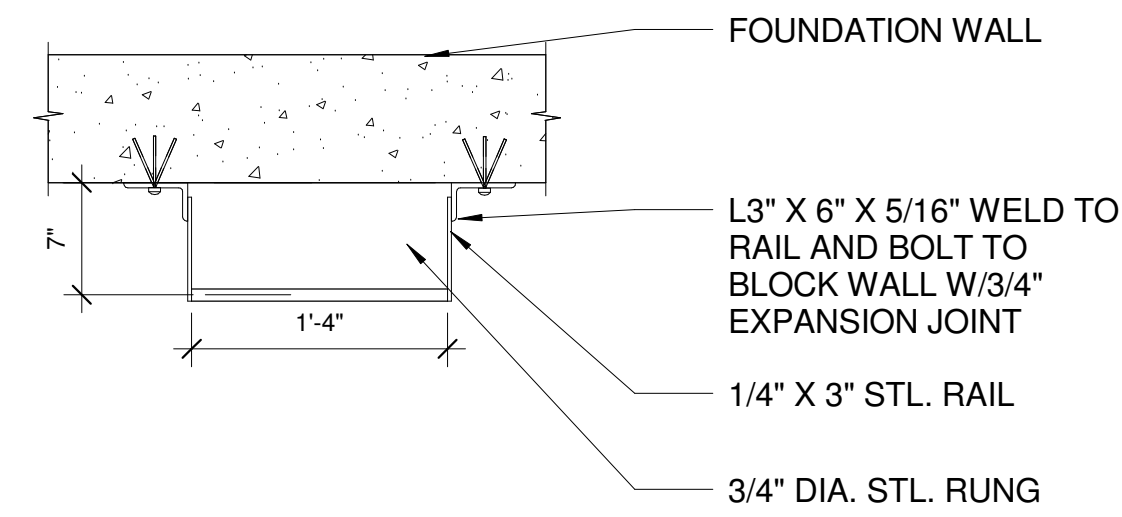


# Elevator Shaft

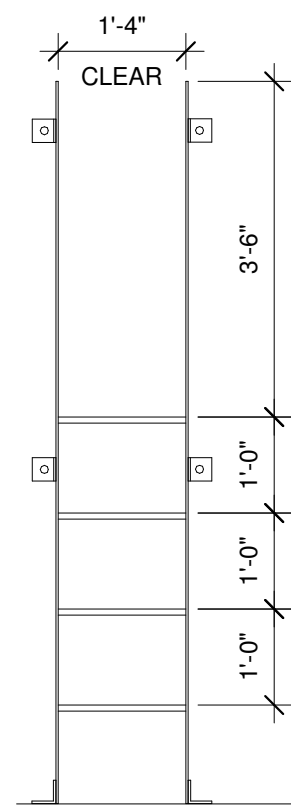
**1 | ELEVATOR OVERRIDE**  
1" = 1'-0"



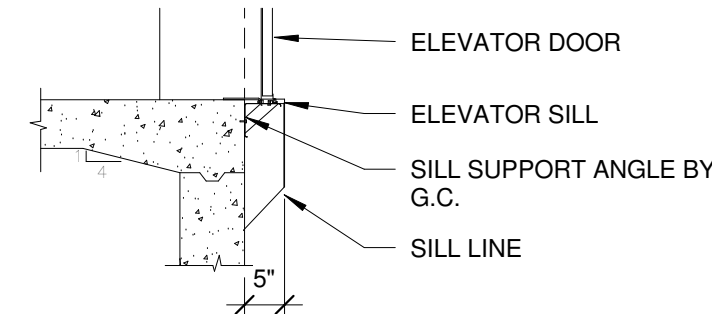
**7 | INTERMEDIATE STEEL BEAM PROTECTION**  
1 1/2" = 1'-0"



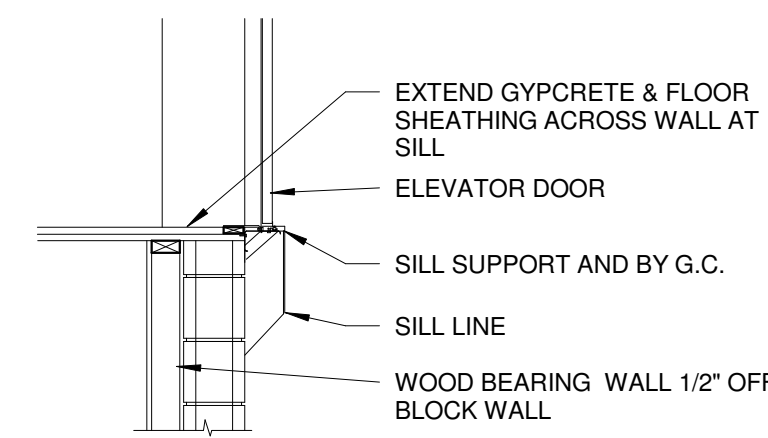
**8 | ELEV DETAIL LADDER PLAN**  
1" = 1'-0"



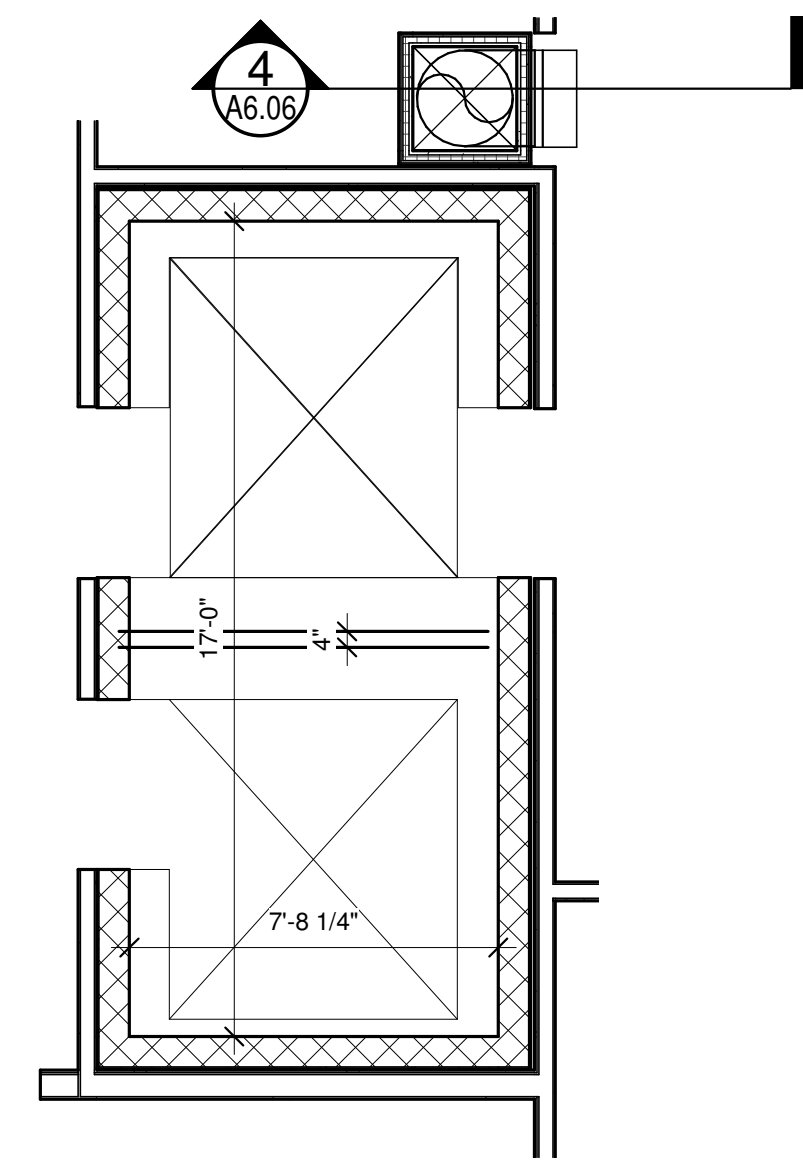
**9 | ELEV DETAIL LADDER ELEV**  
1/2" = 1'-0"



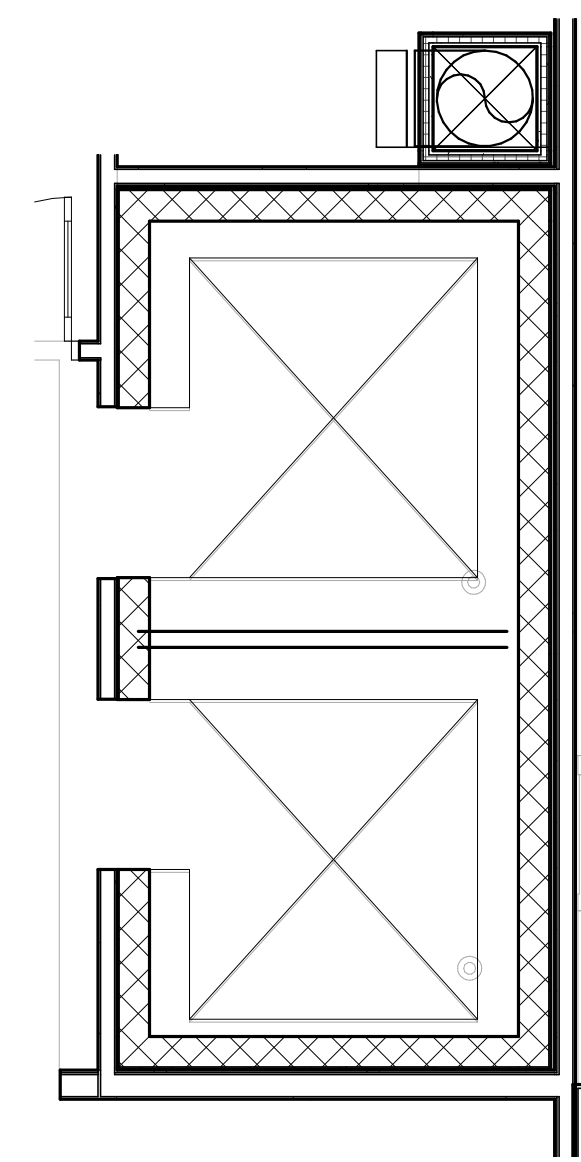
**10 | ELEV DETAIL CONC SILL**  
1/2" = 1'-0"



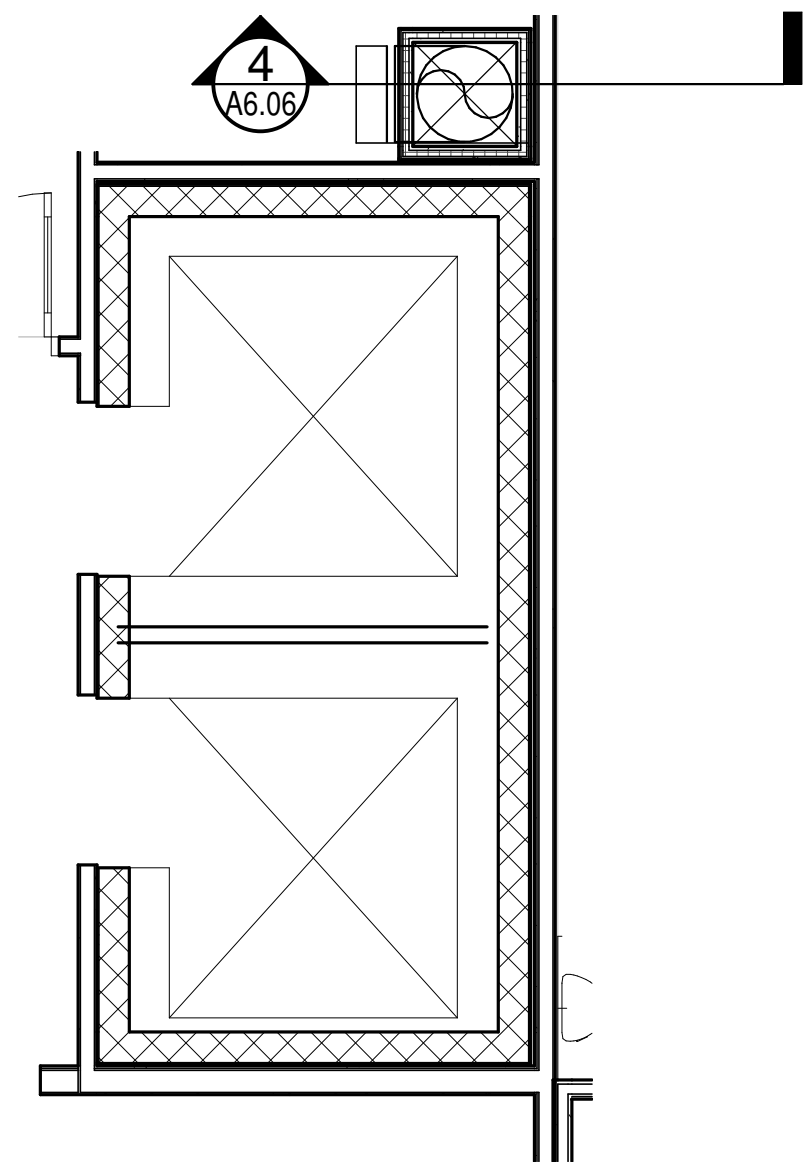
**11 | ELEV DETAIL CMU SILL**  
1/2" = 1'-0"



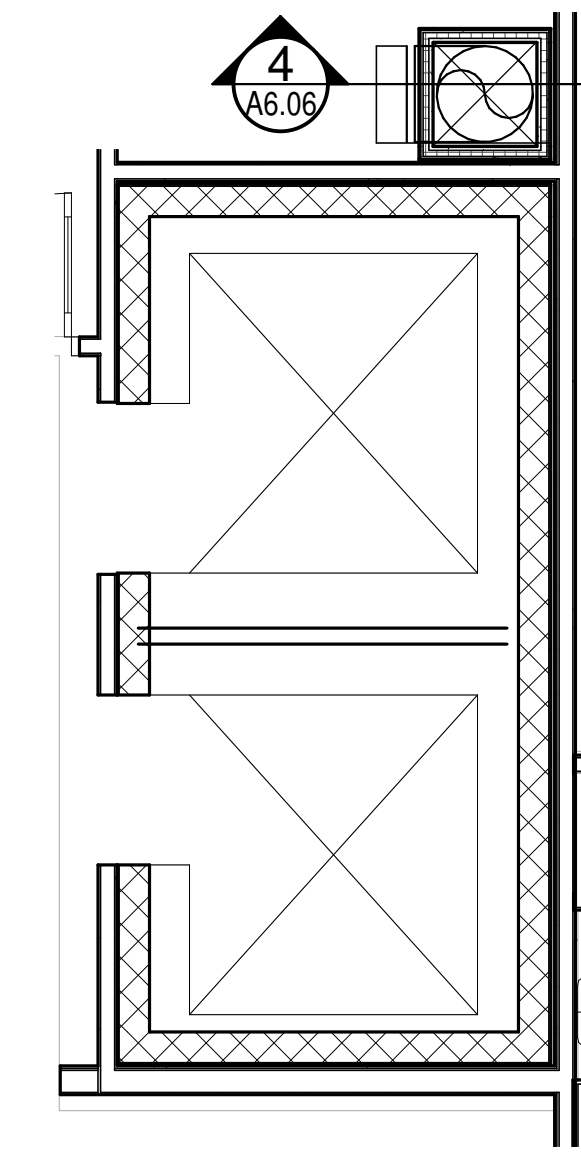
**2 | ELEVATOR - FIRST FLOOR**  
1/4" = 1'-0"



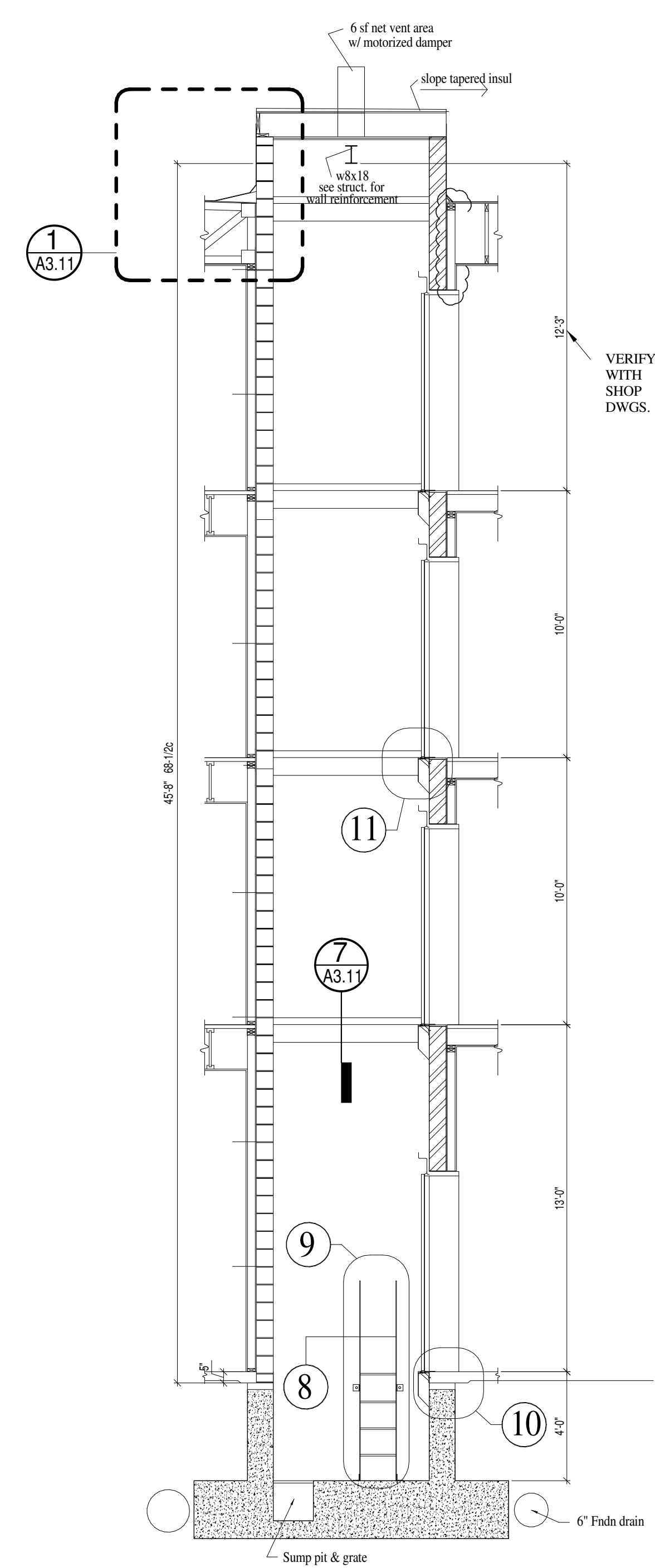
**4 | ELEVATOR - THIRD FLOOR**  
1/4" = 1'-0"



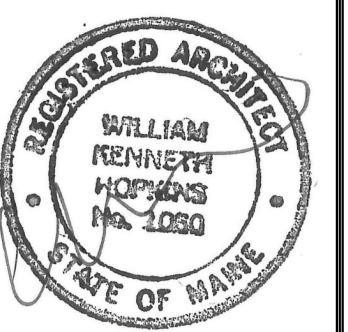
**3 | ELEVATOR - SECOND FLOOR**  
1/4" = 1'-0"



**5 | ELEVATOR - FOURTH FLOOR**  
1/4" = 1'-0"



**6 | ELEVATOR SECTION**  
1/4" = 1'-0"



Prepared For:  
**PORTLAND HOTEL, INC**  
Address  
City, State

Consultant:  
**ARCHETYPE architects**  
48 Union Wharf Portland, Maine 04101  
207.772.6022 ARCHETYPE@ARCHETYPEPA.COM

Project:  
**HAMPTON INN & SUITES**  
1200 Brighton Ave  
Portland, ME

Revisions:  
2 10 FEB 2016  
SUB TO CITY

Date: 12-23-2015  
Scale: As indicated  
**ELEVATOR SECTION AND DETAILS**

**A3.11**