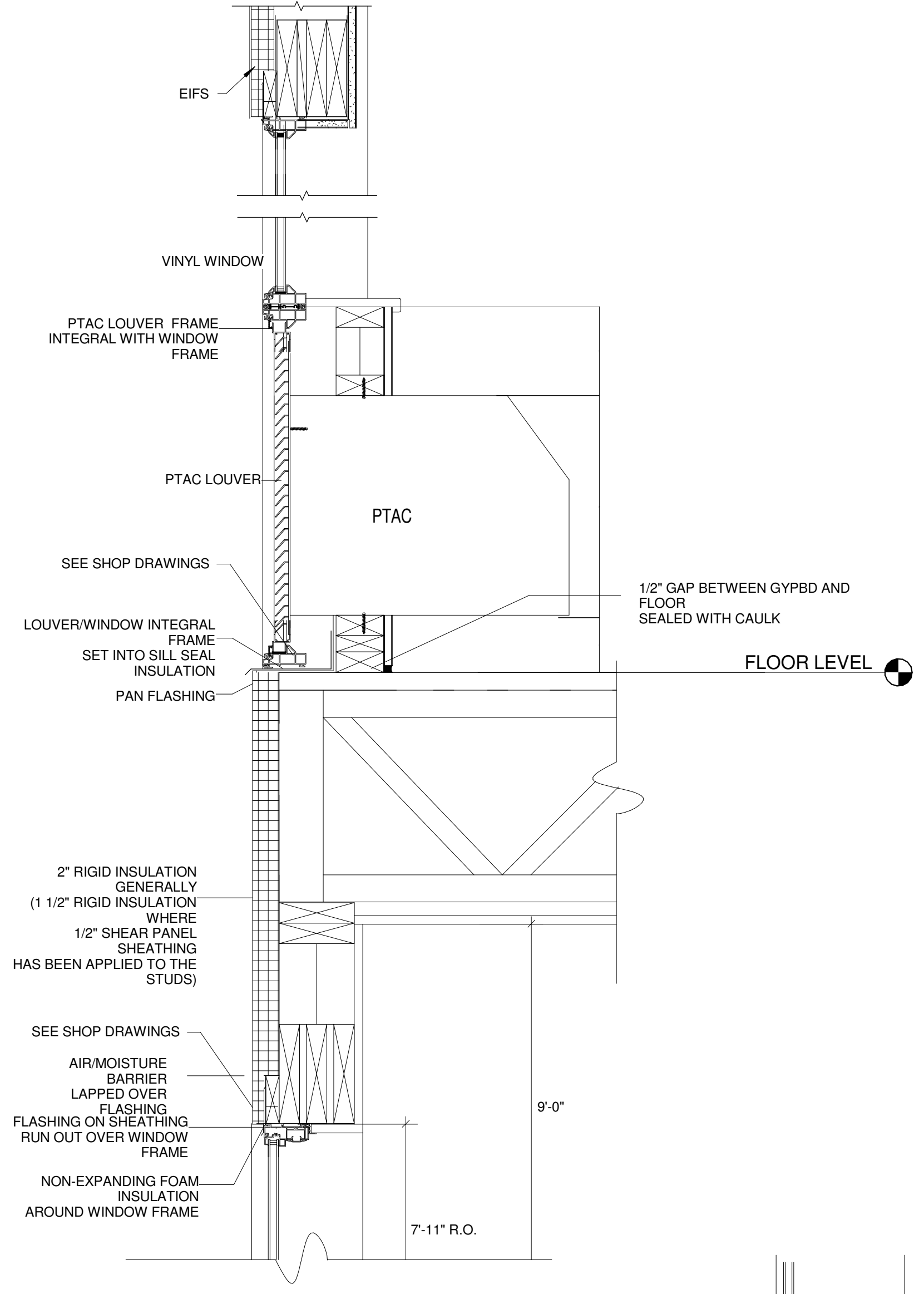
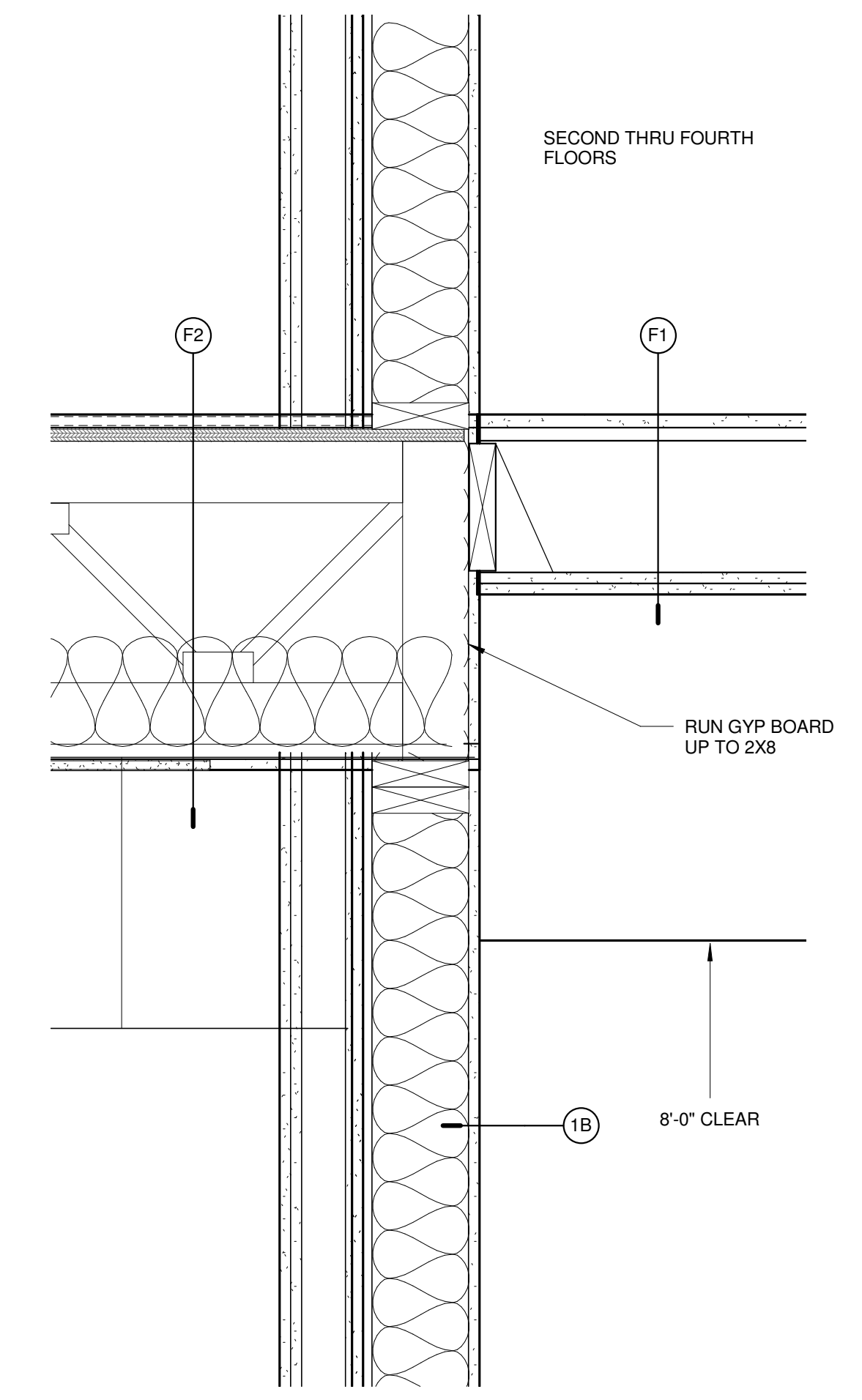


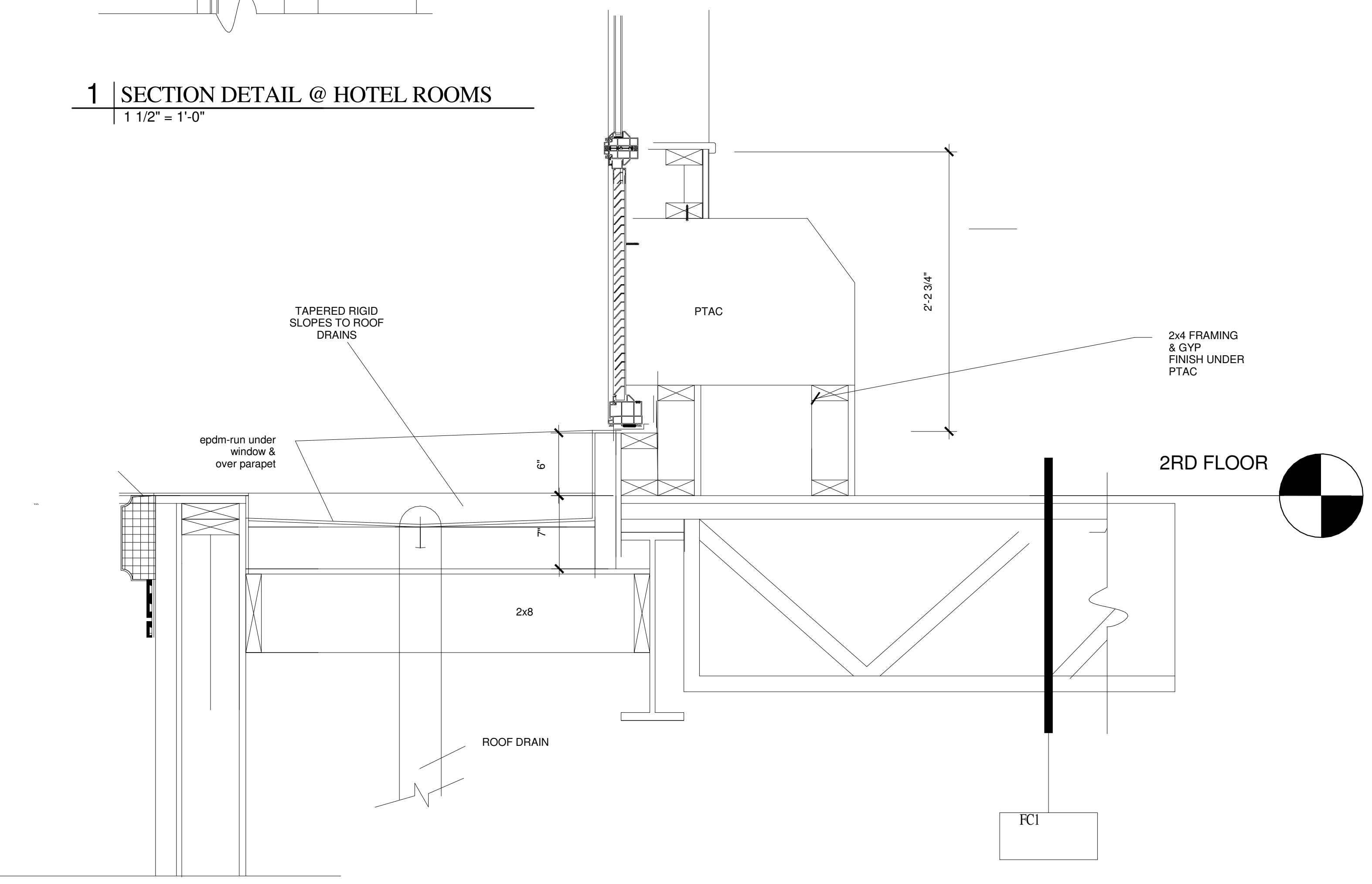
4 | BREAKFAST AREA SECTION
1/4" = 1'-0"



1 | SECTION DETAIL @ HOTEL ROOMS
1 1/2" = 1'-0"



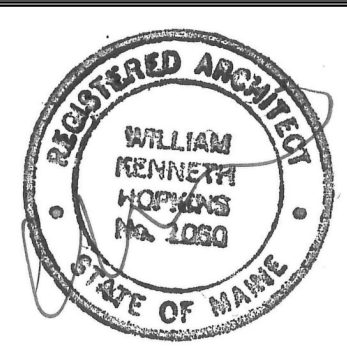
2 | SECTION DETAIL @ CORRIDOR
1 1/2" = 1'-0"



3 | DETAIL @ LOW ROOF
1 1/2" = 1'-0"

Rev	Description	Initials	Date
A	Initial Release		--/--/--

Signed: _____		Customer Name: Applicators		Job Name or No: Hampton Inn PTAC	
Date: _____		Tolerances: All tolerances are subject to current industry standards.		Drawing Date: 2/8/16	
Approval Status: 1 2 3 4		Notes: ALL DIMENSIONS ARE IN INCHES UNLESS SPECIFIED OTHERWISE.		Drawing No: Hampton Inn-PTAC-2	
1 - Approved for Production:		NOTICE: This document contains information that is proprietary to and is controlled by copyright of Paradigm Windows Solutions, Inc. This information may not be copied, disclosed to others or used for any purpose other than that for which it is given without written permission from Paradigm. Copyright © 2016.		Page: 1 of 2	
2 - Approved for Production as noted:		Paradigm Windows Solutions, Inc. All Rights Reserved.		Checked By: _____	
3 - Approved as noted, resubmit drawings:		M del of 2		Scale: 1:30	
4 - Not Approved:		Drawing Size: A		Rev. Level: A	



Prepared For:
PORTLAND HOTEL, INC

Consultant:
ARCHETYPE architects
48 Union Wharf Portland, Maine 04101
(207) 774-6022 ARCHETYPE@ARCHETYPEPA.COM

Project:
HAMPTON INN & SUITES
1200 Breehton Ave
Portland, ME

Revisions:
2 | 10 FEB 2016
SUB TO CITY

Date: 12-23-2015
Scale: As indicated
WALL SECTION & DETAILS

A3.03