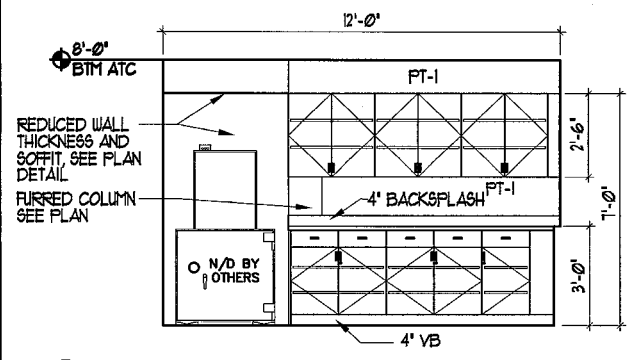
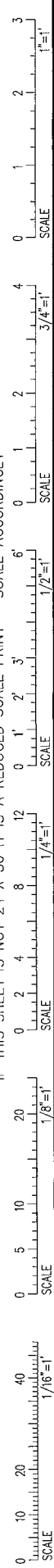
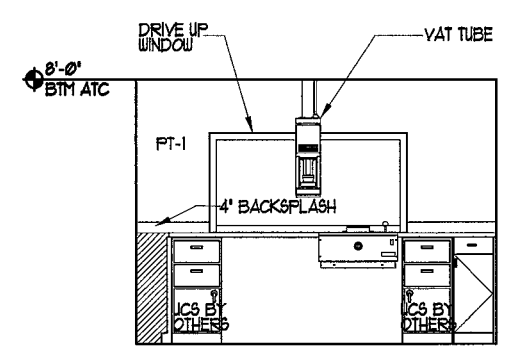


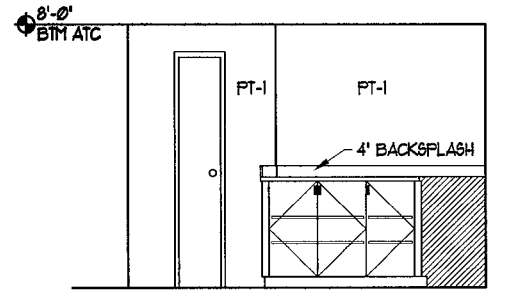
IF THIS SHEET IS NOT 24 X 36 IT IS A REDUCED SCALE PRINT - SCALE ACCORDINGLY



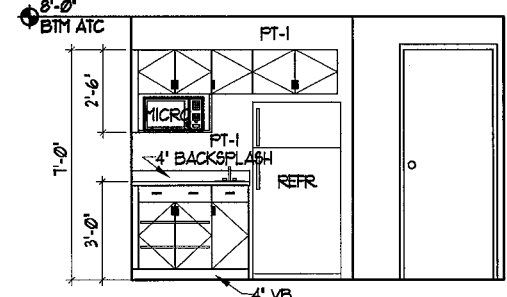
9 CASH ROOM
SCALE: 3/8" = 1'-0"



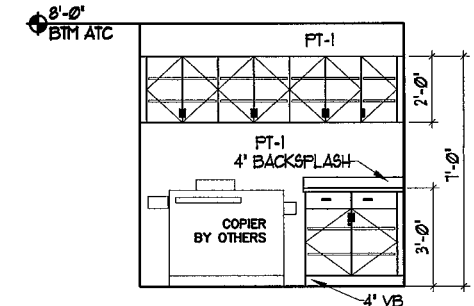
5 ELEVATION @ DRIVE UP
SCALE: 3/8" = 1'-0"



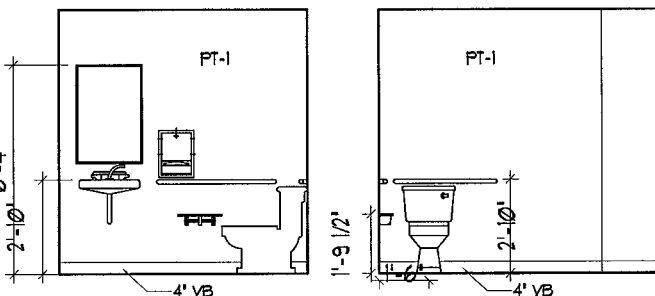
10 ELEVATION @ DRIVE UP
SCALE: 3/8" = 1'-0"



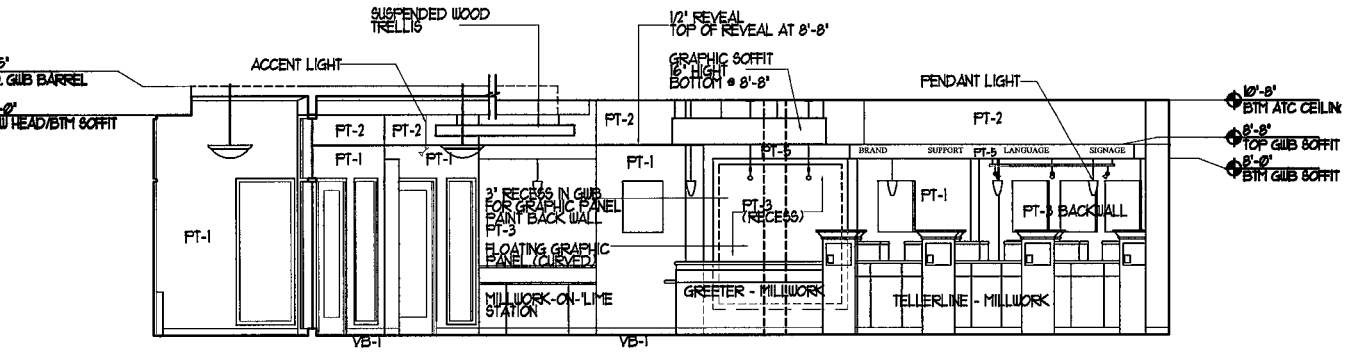
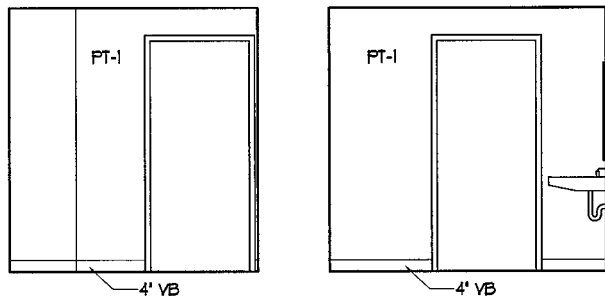
6 BREAK ROOM
SCALE: 3/8" = 1'-0"



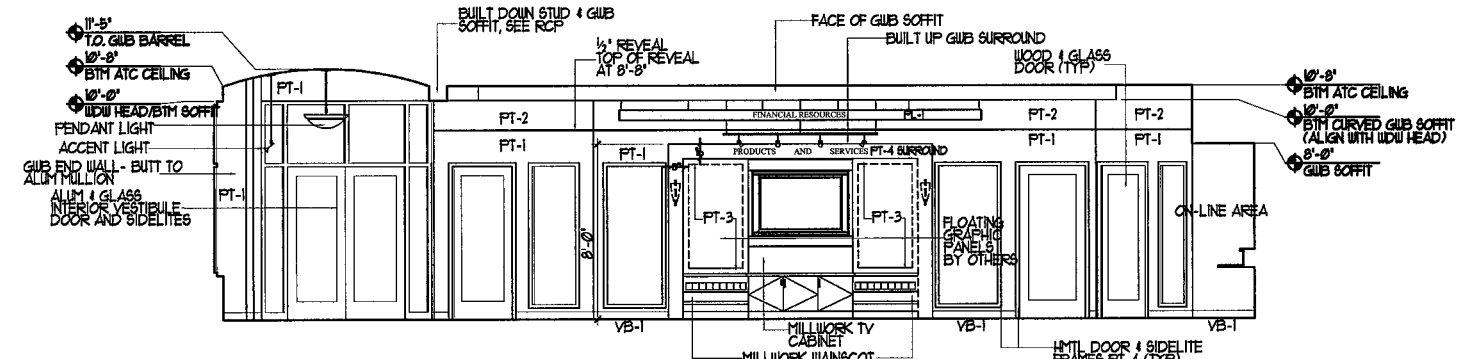
7 COPY/FAX
SCALE: 3/8" = 1'-0"



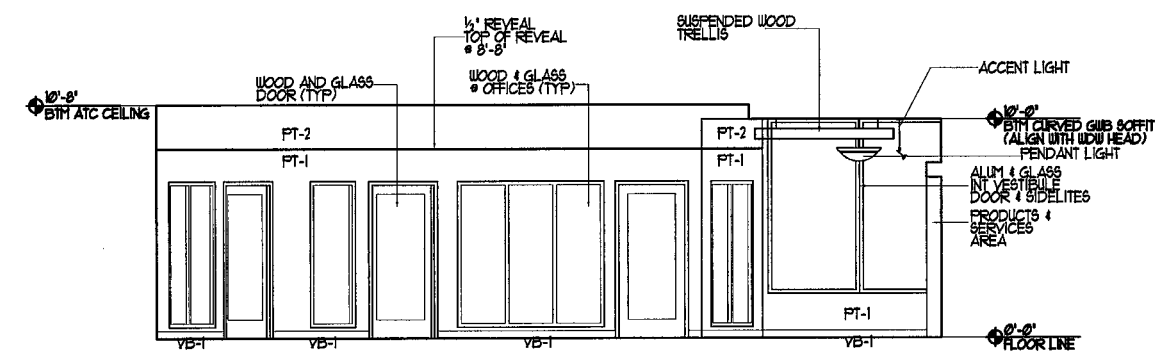
8 BATHROOM ELEVATIONS
SCALE: 3/8" = 1'-0"



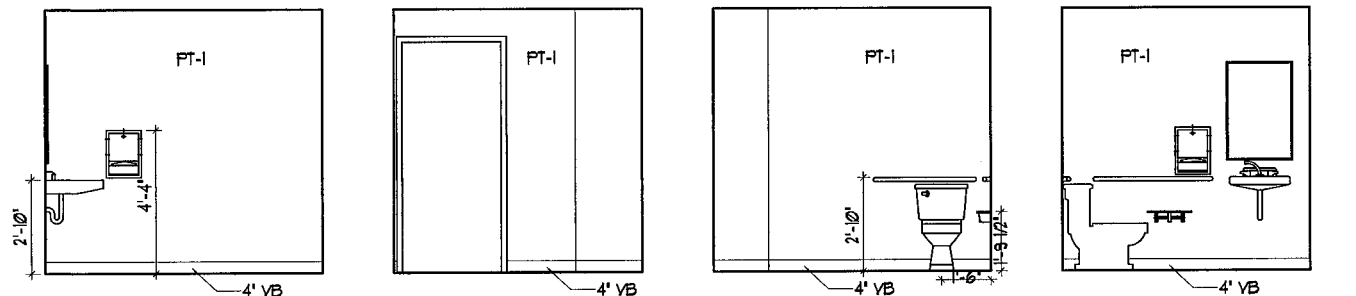
1 INTERIOR ELEVATION "A"
SCALE: 1/4" = 1'-0"



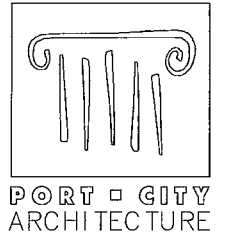
2 INTERIOR ELEVATION "B"
SCALE: 1/4" = 1'-0"



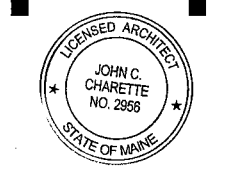
3 INTERIOR ELEVATION "C"
SCALE: 1/4" = 1'-0"



4 BATHROOM ELEVATIONS
SCALE: 3/8" = 1'-0"



PORT CITY ARCHITECTURE
65 NEWBURY STREET
PORTLAND, ME 04101
207.761.9000
fax: 207.761.2010
info@portcityarch.com



brandpartners
BrandPartners
10 Main Street
Rochester, NH 03839
Phone: 603.335.1400
Fax: 603.335.4542



Bangor Savings Bank

**BRIGHTON AVE
Portland, Maine**

DATE	DESCRIPTION
REVISIONS	
Date Issued	10/16/06
Project Number	06108
Drawing Scale	AS NOTED

INTERIOR ELEVATION
Drawn By: NLG
Checked By: JCC
A3.1