

premierSchwank - Innovative, low fuel cost and high comfort

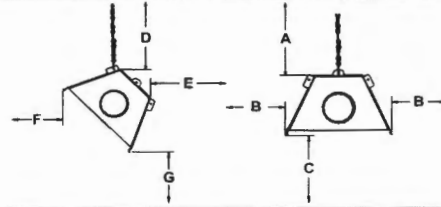
The Schwank Advantage:

- Worldwide market leader in infrared heating
- Highly rated customer service in the industry:
 - The quickest lead times, as short as two days
 - The best on-time performance, over 99% during normal periods, and over 95% during peak seasons
 - The best quality in the industry: our service claims are less than 0.8% of sales
- Complete heating solutions from one source: luminous [high intensity], tube, patio and stadium heaters
- Fuel cost analysis and investment evaluation
- Professional planning and free design support
- 10-year replacement warranty on the radiant tube

Our References Include:

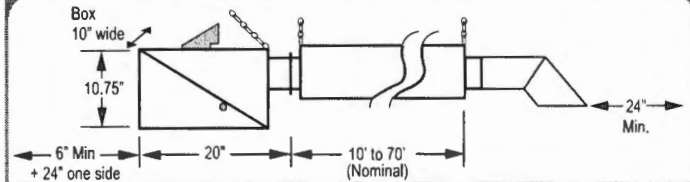
US Army, Canadian Armed Forces, Amazon.com, Ford, Chrysler, BMW, Sears, UPS, US Steel, Bombardier, Alstom, Siemens, WalMart, DHL, Delta Airlines, Continental Airlines and Air Canada.

Clearances to Combustibles



MODEL	SUSPENDED AT AN ANGLE up to 45°				SUSPENDED HORIZONTALLY		
	D	E	F	G	A	B	C
STS-JZ 200	13"	6"	74"	70"	14"	44"	76"
STS-JZ 175	12"	6"	72"	68"	13"	42"	74"
STS-JZ 155	5.5"	1"	44"	64"	3.5"	19"	64"
STS-JZ 130	4.5"	1"	35"	60"	3.3"	11"	60"
STS-JZ 110	3.5"	1"	26"	54"	2.0"	10"	54"
STS-JZ 100	6.5"	1"	57"	68"	6.0"	22"	68"
STS-JZ 80	3.0"	1"	23"	38"	1.75"	6"	38"
STS-JZ 60	2.5"	1"	17"	34"	1.5"	5.5"	34"
STS-JZ 45	2.75"	1"	24"	32"	2.25"	7"	32"

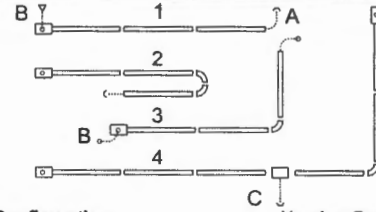
Dimensions and Specifications



MODEL	INPUT [BTU/HR] U.S.A.* Sea Level to 2,000' CANADA* Sea Level to 4,500'	AVAILABLE LENGTH						
		10'	20'	30'	40'	50'	60'	70'
STS-JZ 200	200,000					■	■	■
STS-JZ 175	175,000					■	■	■
STS-JZ 155	155,000				■	■	■	
STS-JZ 130	130,000				■	■	■	
STS-JZ 110	110,000				■	■	■	
STS-JZ 100	100,000		■					
STS-JZ 80	80,000		■	■	■			
STS-JZ 60	60,000		■	■				
STS-JZ 45	45,000		■	■				
HEATER LENGTH		11'8"	21'4"	31'	40'8"	50'4"	60'	69'8"
SHIPPING WEIGHT [LBS.]		100	150	200	240	315	360	430

* HIGH ALTITUDE: De-rate heater 4% for each additional 1,000 ft. of elevation.

Flexible Layout



System Configuration

- Straight line
- "U" tube with two 90° elbow kits
- "L" tube with 90° elbow kit
- Common 6" TEE flue vent

Venting Options

- 4" flue vent through wall or roof
- 4" intake air from wall or roof
- 6" common vent through wall or roof

Optional Accessories

Fresh air intake wall cap	JS-0532-VC
4" Horizontal flue vent terminal [wall]	JA-0528-XX
90° Elbow kit with reflector cap [Combine with two 90° to create 180° elbow]	JS-0508-JZ
#2 Lion chain	JL-0800-XX

Consult your local authorized dealer for other Schwank accessories:

- Line-voltage and 24V thermostat and controls
- Flexible gas connectors and type 1 hoses
- Side reflector extensions

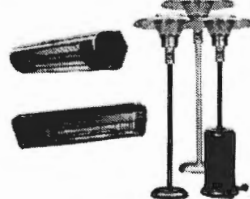
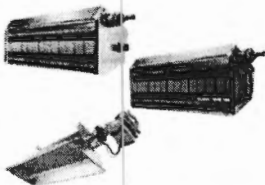
Gas pressure	Line minimum:	5" W.C. NG	11" W.C. LP
	Line maximum:	14" W.C. NG	14" W.C. LP
	Manifold:	3.5" W.C. NG	10" W.C. LP
Gas inlet	1/2"		
Flue & air vent	4"		
Electrical	120V, 60 Hz, 1.5 AMPS		

Schwank Tube Heater Series



Schwank Luminous Heater Series

patioSchwank Series



Distributor info:

USA: 2 Schwank Way, Waynesboro, GA 30830 | Canada: 5285 Bradco Blvd. Mississauga, ON L4W 2A6
Tel: 1-877-446-3727 | Fax: 1-866-361-0523 | www.schwankgroup.com | csr@schwankgroup.com



M091006 RL:5 RD:Mar-2011