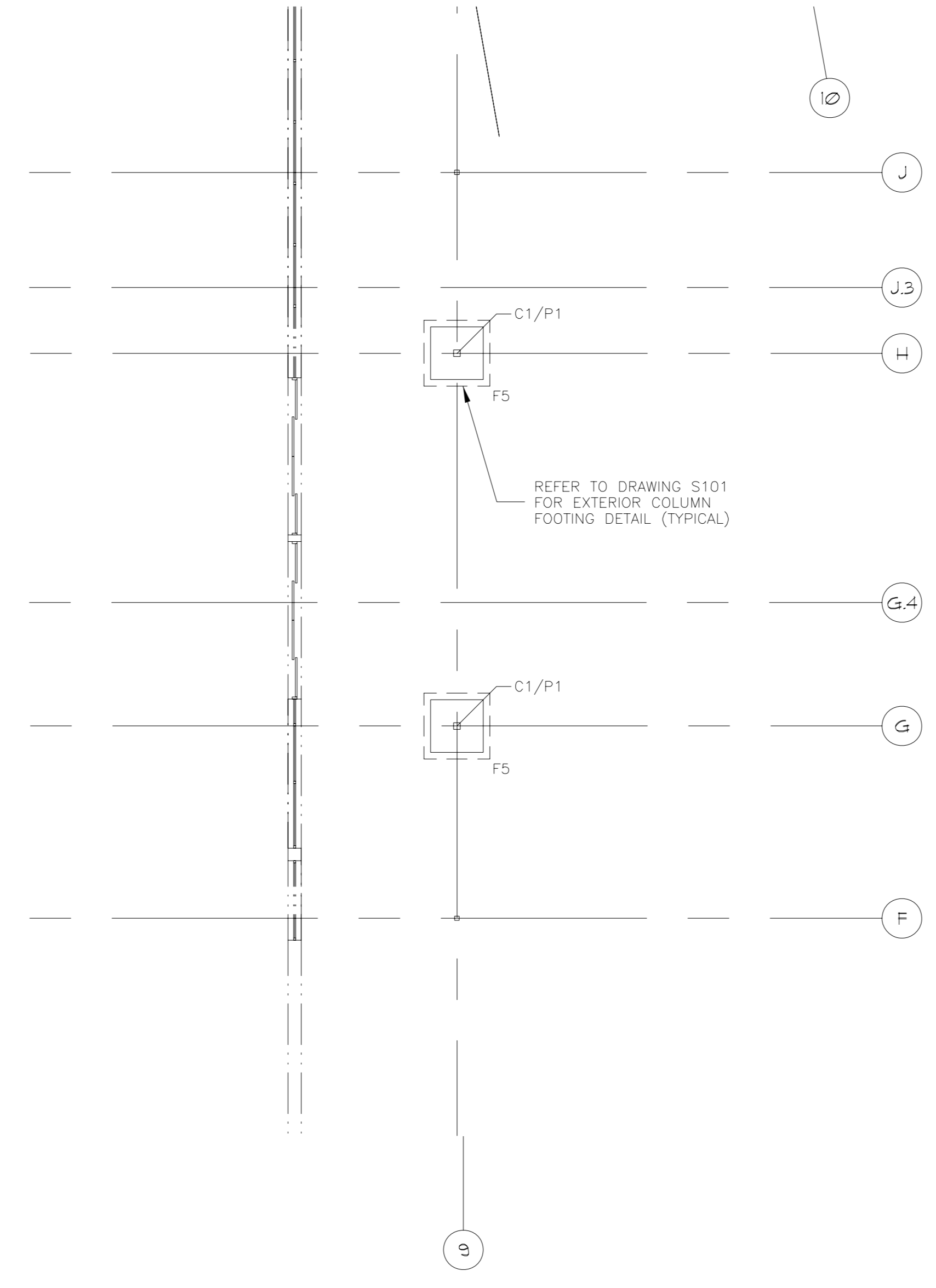


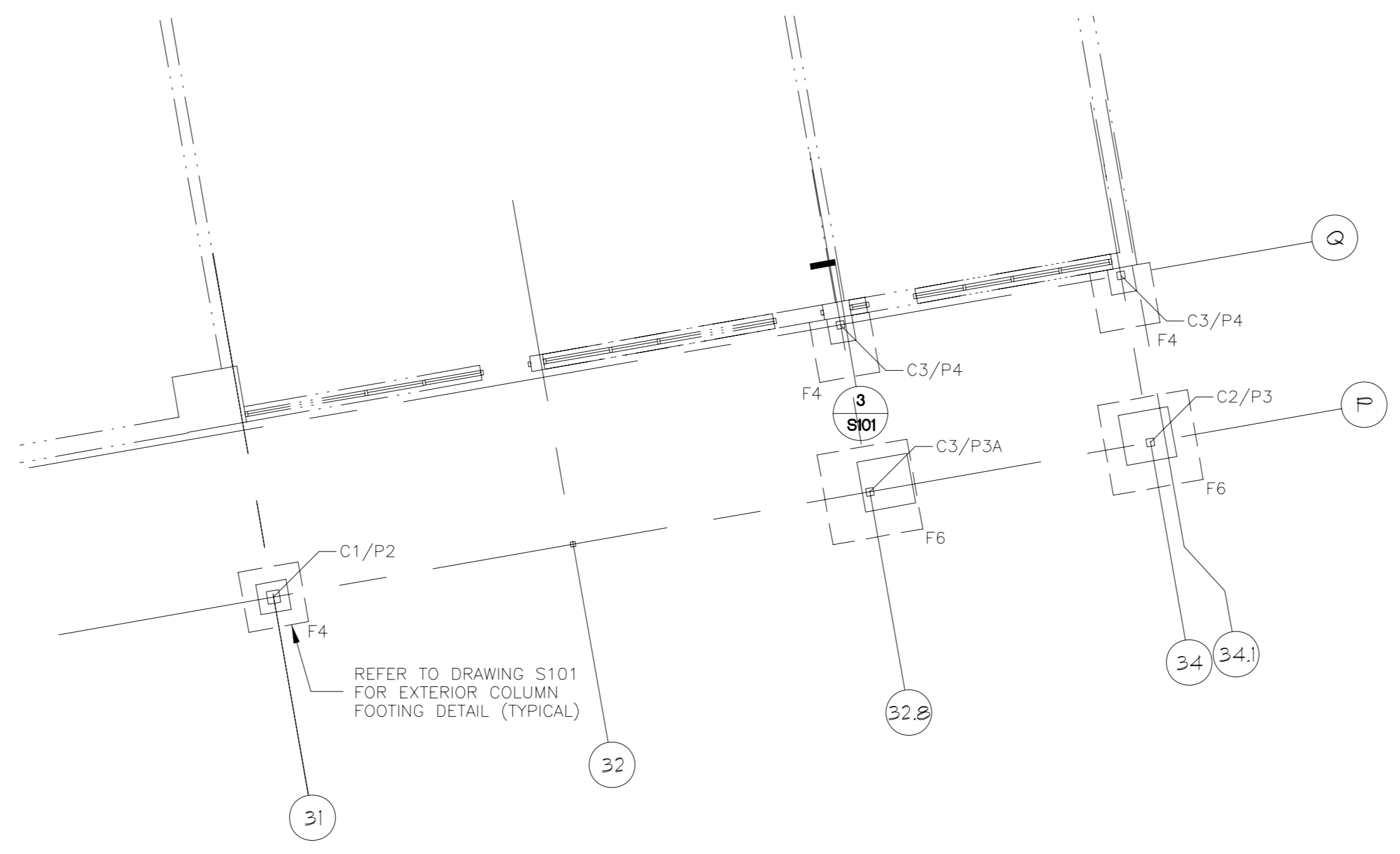
CONCRETE FOOTING SCHEDULE				
MARK	SIZE			REINFORCING
	L	W	T	
F4	4'-0"	4'-0"	1'-0"	4-#5 BOTTOM EACH WAY
F5	5'-0"	5'-0"	1'-2"	5-#5 BOTTOM EACH WAY
F6	6'-0"	6'-0"	1'-4"	6-#6 BOTTOM EACH WAY

COLUMN SCHEDULE				
MARK	COLUMN	BASE PLATE		ANCHOR BOLTS
		L	W	
C1	HSS44x4x1/2"	12"	12"	4-1" A307
C2	HSS8x8x3/8"	16"	16"	4-1" A307
C3	HSS8x8x3/8"	SEE "BP-1"		4-1" A307



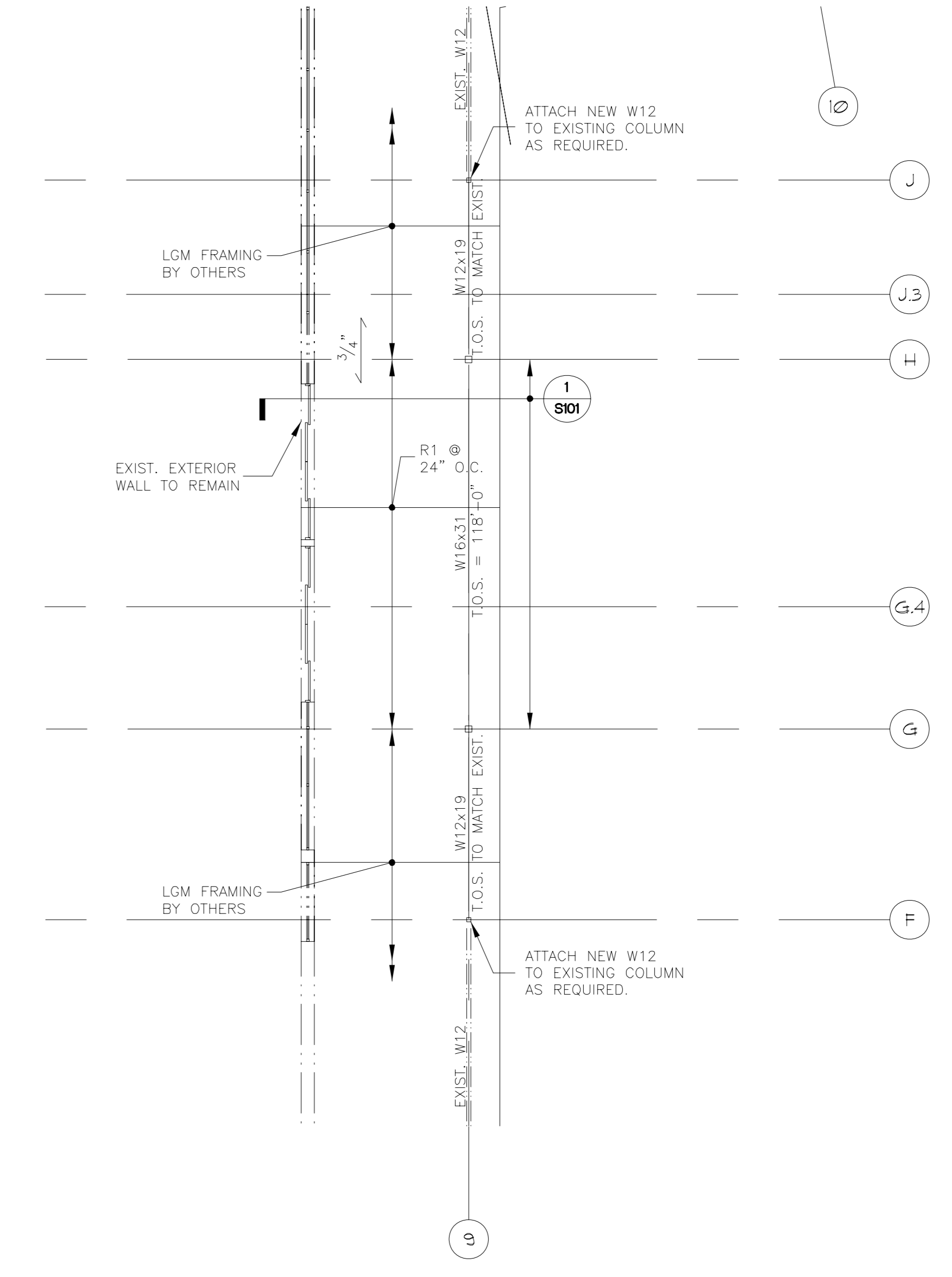
CANOPY FOUNDATION PART PLAN
SCALE: 1/8" = 1'-0"

- PLAN NOTES:
- SEE DWG S101 FOR GENERAL NOTES AND TYPICAL DETAILS.
 - F4 ETC. INDICATES FOOTING TYPE. SEE SCHEDULE ON THIS DRAWING FOR SIZE AND REINFORCEMENT OF FOOTING.
 - TOP OF FOOTING ELEVATION EQUALS 95'-6" UNLESS NOTED THUS [XX'-XX"].
 - C1 ETC. INDICATES A COLUMN TYPE. SEE SCHEDULE ON THIS DRAWING FOR SIZE OF COLUMN AND BASE PLATE.
 - BOTTOM OF BASE PLATE ELEVATION EQUALS 99'-1" UNLESS NOTED THUS [XX'-XX"].
 - ALL FOOTINGS TO BE CENTERED UNDER COLUMNS UNLESS NOTED OTHERWISE.
 - P1 ETC. INDICATES A CONCRETE PIER TYPE. SEE PIER DETAILS ON THIS DRAWING FOR SIZE AND REINFORCEMENT.
 - FOR DIMENSIONS AND ELEVATIONS NOT GIVEN, REFER TO ARCHITECTURAL DRAWINGS.



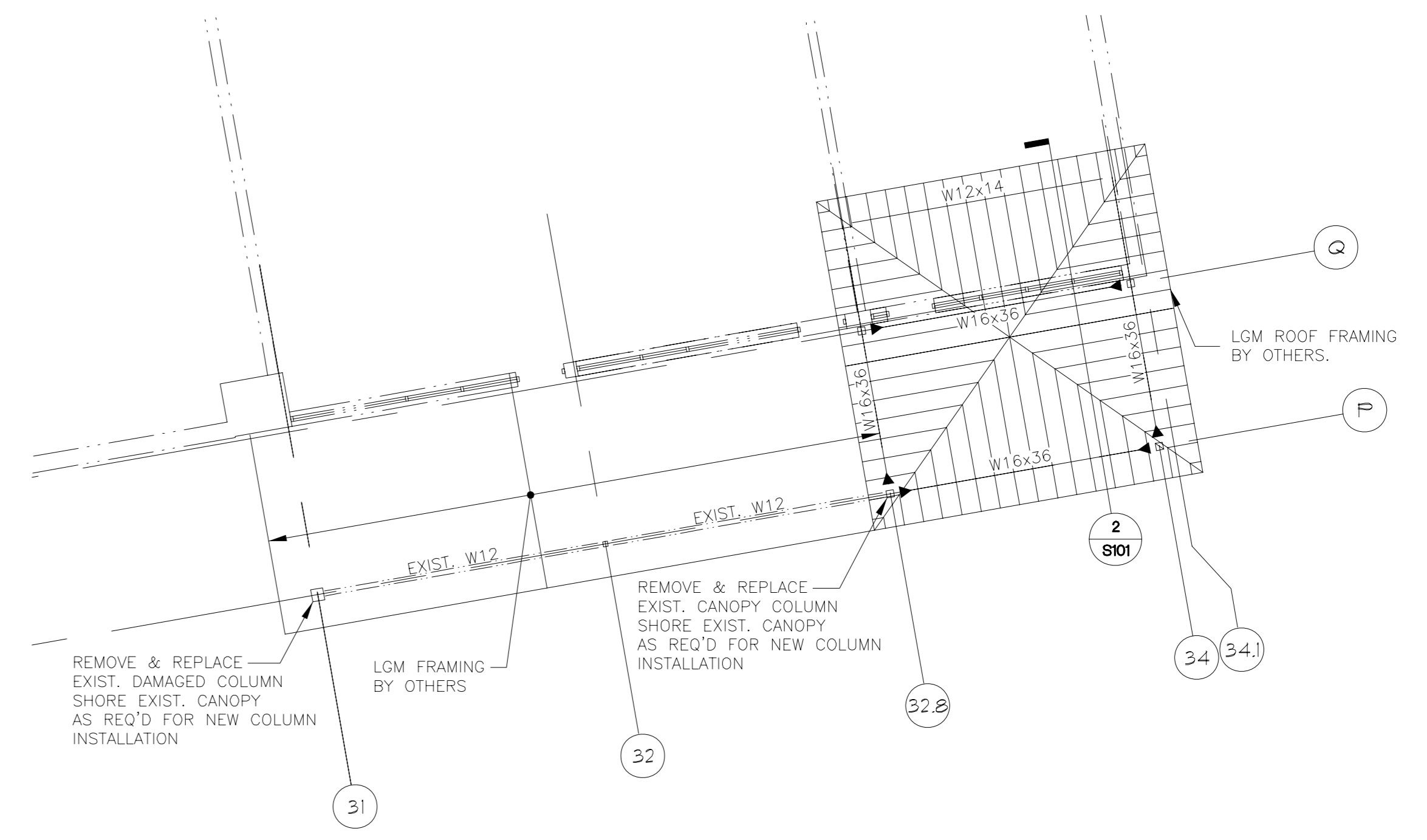
CANOPY FOUNDATION PART PLAN
SCALE: 1/8" = 1'-0"

- PLAN NOTES:
- SEE DWG S101 FOR GENERAL NOTES AND TYPICAL DETAILS.
 - F4 ETC. INDICATES FOOTING TYPE. SEE SCHEDULE ON THIS DRAWING FOR SIZE AND REINFORCEMENT OF FOOTING.
 - TOP OF FOOTING ELEVATION EQUALS 95'-6" UNLESS NOTED THUS [XX'-XX"].
 - C1 ETC. INDICATES A COLUMN TYPE. SEE SCHEDULE ON THIS DRAWING FOR SIZE OF COLUMN AND BASE PLATE.
 - BOTTOM OF BASE PLATE ELEVATION EQUALS 99'-1" UNLESS NOTED THUS [XX'-XX"].
 - ALL FOOTINGS TO BE CENTERED UNDER COLUMNS UNLESS NOTED OTHERWISE.
 - P1 ETC. INDICATES A CONCRETE PIER TYPE. SEE PIER DETAILS ON THIS DRAWING FOR SIZE AND REINFORCEMENT.
 - FOR DIMENSIONS AND ELEVATIONS NOT GIVEN, REFER TO ARCHITECTURAL DRAWINGS.



CANOPY ROOF FRAMING PART PLAN
SCALE: 1/8" = 1'-0"

- "CANOPY ROOF FRAMING PLAN" NOTES:
- SEE DRAWINGS S101 FOR GENERAL NOTES & TYPICAL DETAILS.
 - $\frac{1}{2}$ " INDICATES SPAN OF $\frac{3}{4}$ " TONGUE & GROOVE PLYWOOD. GLUE & SCREW TO ROOF FRAMING AS REQUIRED.
 - ▶ INDICATES A FULL PENETRATION MOMENT CONNECTION.
 - REFER TO ARCHITECTURAL DRAWINGS FOR DIMENSIONS AND ELEVATIONS NOT SHOWN.



CANOPY ROOF FRAMING PART PLAN
SCALE: 1/8" = 1'-0"

- "CANOPY ROOF FRAMING PLAN" NOTES:
- SEE DRAWINGS S101 FOR GENERAL NOTES & TYPICAL DETAILS.
 - $\frac{1}{2}$ " INDICATES SPAN OF $\frac{3}{4}$ " TONGUE & GROOVE PLYWOOD. GLUE & SCREW TO ROOF FRAMING AS REQUIRED.
 - ▶ INDICATES A FULL PENETRATION MOMENT CONNECTION.
 - REFER TO ARCHITECTURAL DRAWINGS FOR DIMENSIONS AND ELEVATIONS NOT SHOWN.

Drawing Description		Structural Plans and Details	
OWNER: CENTRO HERITAGE SPE 4LLC		PROJECT: PINE TREE SHOPPING CENTER, BRIGHTON AVE., PORTLAND, ME	
PROJECT: 40 SKOKIE BLVD., SUITE 800 NORTHBROOK, IL 60062		ME PINE TREE	
Project No.	05120	Drawn By	04/05/2007
Phase	PERMIT	Checked By	04/05/2007
Sheet No.	S100	Scale	AS NOTED