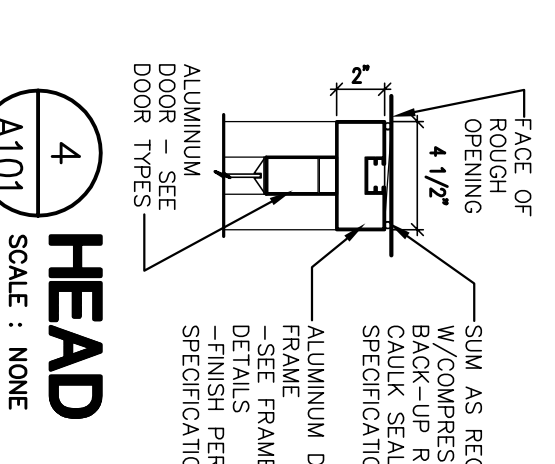


**PLAN NOTES**

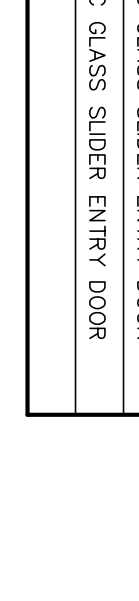
1. DEMOLISH EXISTING STRENGTHENED ENTRY AND CONCRETE CURB WALLS.
2. DEMOLISH EXISTING STRENGTHENED ENTRY DOORS/FRAMES TO REMAIN UNDISTURBED UNLESS NOTED OTHERWISE.
3. DEMOLISH EXISTING STRENGTHENED ENTRY DOORS/FRAMES TO REMAIN UNDISTURBED UNLESS NOTED OTHERWISE.
4. DEMOLISH EXISTING STRENGTHENED ENTRY DOORS/FRAMES TO REMAIN UNDISTURBED UNLESS NOTED OTHERWISE.
5. DEMOLISH EXISTING STRENGTHENED ENTRY DOORS/FRAMES TO REMAIN UNDISTURBED UNLESS NOTED OTHERWISE.
6. DEMOLISH EXISTING STRENGTHENED ENTRY DOORS/FRAMES TO REMAIN UNDISTURBED UNLESS NOTED OTHERWISE.
7. DEMOLISH EXISTING STRENGTHENED ENTRY DOORS/FRAMES TO REMAIN UNDISTURBED UNLESS NOTED OTHERWISE.
8. DEMOLISH EXISTING STRENGTHENED ENTRY DOORS/FRAMES TO REMAIN UNDISTURBED UNLESS NOTED OTHERWISE.
9. DEMOLISH EXISTING STRENGTHENED ENTRY DOORS/FRAMES TO REMAIN UNDISTURBED UNLESS NOTED OTHERWISE.
10. DEMOLISH EXISTING STRENGTHENED ENTRY DOORS/FRAMES TO REMAIN UNDISTURBED UNLESS NOTED OTHERWISE.

**DOOR SCHEDULE**

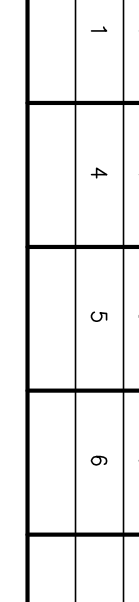
NO.	DOOR TYPE	DOOR FRAME MATL.	FRAME MATL.	HEAD DET.	JAMB DET.	SILL DET.	LABEL	REMARKS
101	12'-0" x 7'-0" (UNIT 202)	A	AL/GR	4	5	6		NEW AUTOMATIC GLASS SLIDER ENTRY DOOR
102	12'-0" x 7'-0" (UNIT 202)	A	AL/GR	4	5	6		NEW AUTOMATIC GLASS SLIDER ENTRY DOOR
103	12'-0" x 7'-0" (UNIT 202)	A	AL/GR	4	5	6		NEW AUTOMATIC GLASS SLIDER ENTRY DOOR
104	12'-0" x 7'-0" (UNIT 202)	A	AL/GR	4	5	6		NEW AUTOMATIC GLASS SLIDER ENTRY DOOR



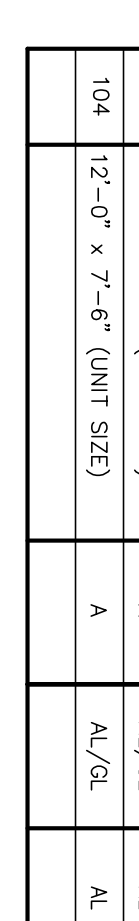
**4 HEAD**  
SCALE: NONE



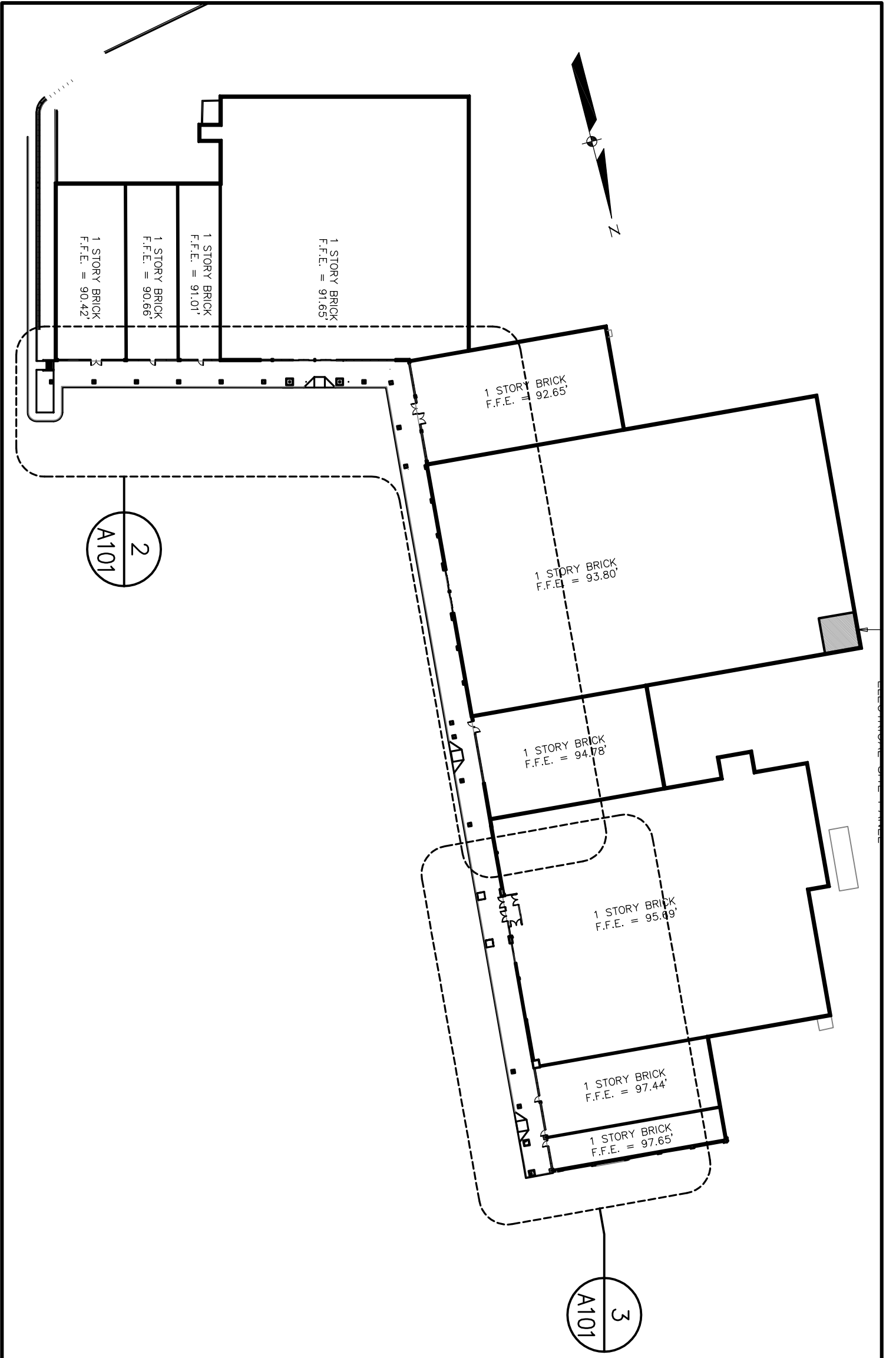
**6 SILL**  
SCALE: NONE



**5 JAMB**  
SCALE: NONE



**1**



**1 KEY PLAN**  
SCALE: 1/8"=1'-0"

Rev. #	Issue	Description	Date	Rev. #	Issue	Description	Date
0	05/14/07	BD					

Des./Dtr	Drawn By	Checked By
GWS	RMS	GWS
AS NOTED	05/14/2007	Approved

**OWNER:** CENTRO HERITAGE SPE 4LLC  
40 SKOKIE BLVD., SUITE 600  
NORTHBROOK, IL 60062

**Architect/Engineer:** SCHNEE ARCHITECTS  
333 ADAMS ST. SUITE 5 NORTH W. CORNERS  
TEL: 847-233-0000 FAX: 847-233-0000

**Market/Project Name:** PINE TREE SHOPPING CENTER, BRIGHTON AVE., PORTLAND, ME

**AVE Project No.:** 05120

**State:** ME **Site:** PINE TREE

**Project No.:** BID

**Sheet No.:** A101