

# Renovations to Space 8

The Pine Tree Mall, Portland, Maine

for

## Bath Fitter

Drawing List

- AO-01 Cover Sheet
- DI-01 Demolition Plans
- AI-01 Existing Conditions Plans
- AI-02 Renovated Floor Plan
- AI-03 Wall Types & Schedules
- II-01 Finish Plan
- FI-01 Seating & Life Safety Plans

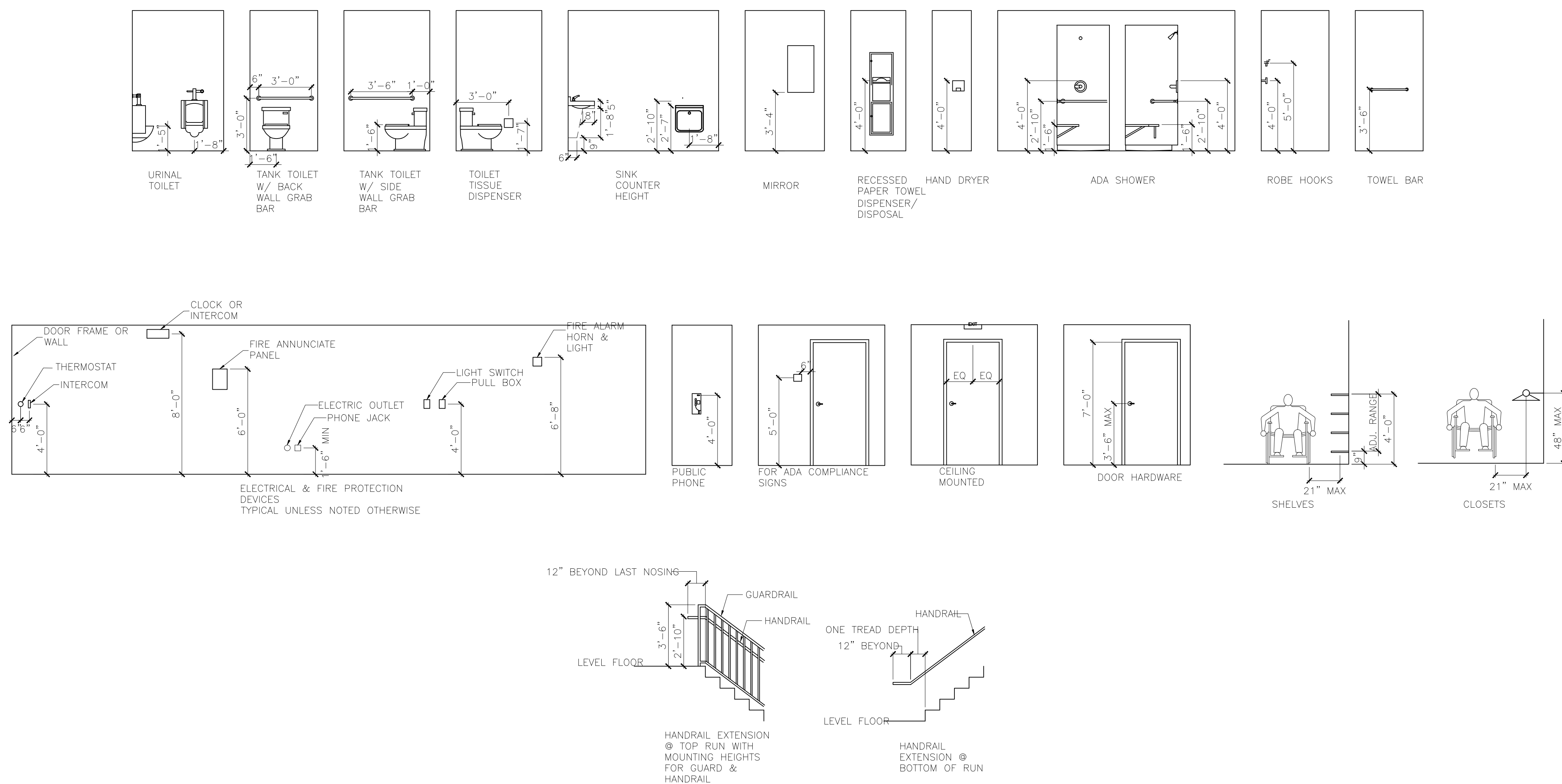
BUILDING CODE COMPLIANCE:

DESIGN CRITERIA - THIS PROJECT HAS BEEN DESIGNED FOR COMPLIANCE WITH THE FOLLOWING CODES:  
 INTERNATIONAL BUILDING CODE (IBC) - 2009 EDITION  
 NFPA 101 - 2006 EDITION  
 ICC/ANSI A117.1 - 1998 EDITION  
 UNDERWRITERS LABORATORY FIRE RESISTANCE RATING DESIGNS - 2003 EDITION

OCCUPANCY CLASSIFICATION - BUSINESS GROUP B  
 USE CLASSIFICATION - PROFESSIONAL  
 OCCUPANCY CLASSIFICATION - STORAGE S-1  
 USE CLASSIFICATION - MODERATE HAZARD  
 OCCUPANT LOAD:  
 BUSINESS GROUP B (1538 SQ.FT. / 100 SF/PERSON) = 16  
 STORAGE S-1 (2334 SQ.FT. / 200 SF/PERSON) = 13  
 EXIT UNITS 0.21/PERSON = 5.8 UNITS  
 EXITS REQUIRED = (1), EXITS PROVIDED = (2)  
 CONSTRUCTION CLASSIFICATION - TYPE I (NON-COMBUSTABLE)

FIRE PROTECTION SYSTEM REQUIREMENTS:  
 A. AN AUTOMATIC SPRINKLER SYSTEM IS PROVIDED.  
 B. PORTABLE FIRE EXTINGUISHER RATING SHALL BE 2-A:20-B:C  
 SPACING SHALL NOT EXCEED A MAXIMUM OF 15 FEET (1500 SQ. FT. / UNIT.)

FIRE ALARM AND DETECTION SYSTEM REQUIREMENTS:  
 A. A FIRE ALARM AND DETECTION SYSTEM IS PROVIDED.



**Renovations to space 8**  
 Located at the Pine Tree Mall Portland, Maine  
 for Bath Fitter

|         |                       |
|---------|-----------------------|
| BY      | JU                    |
| NO      |                       |
| REMARKS |                       |
| A       | ISSUED FOR PERMITTING |
| DATE    | 08-09-13              |
| CODE:   |                       |
| TOWN:   | Portland              |
| DATE:   | 08-09-13              |
| SCALE:  | AS NOTED              |
| DRAWN:  | JU                    |
| TITLE:  | Existing Conditions   |
| FILE:   | 001-016-09            |
| SHEET:  | A0-01                 |