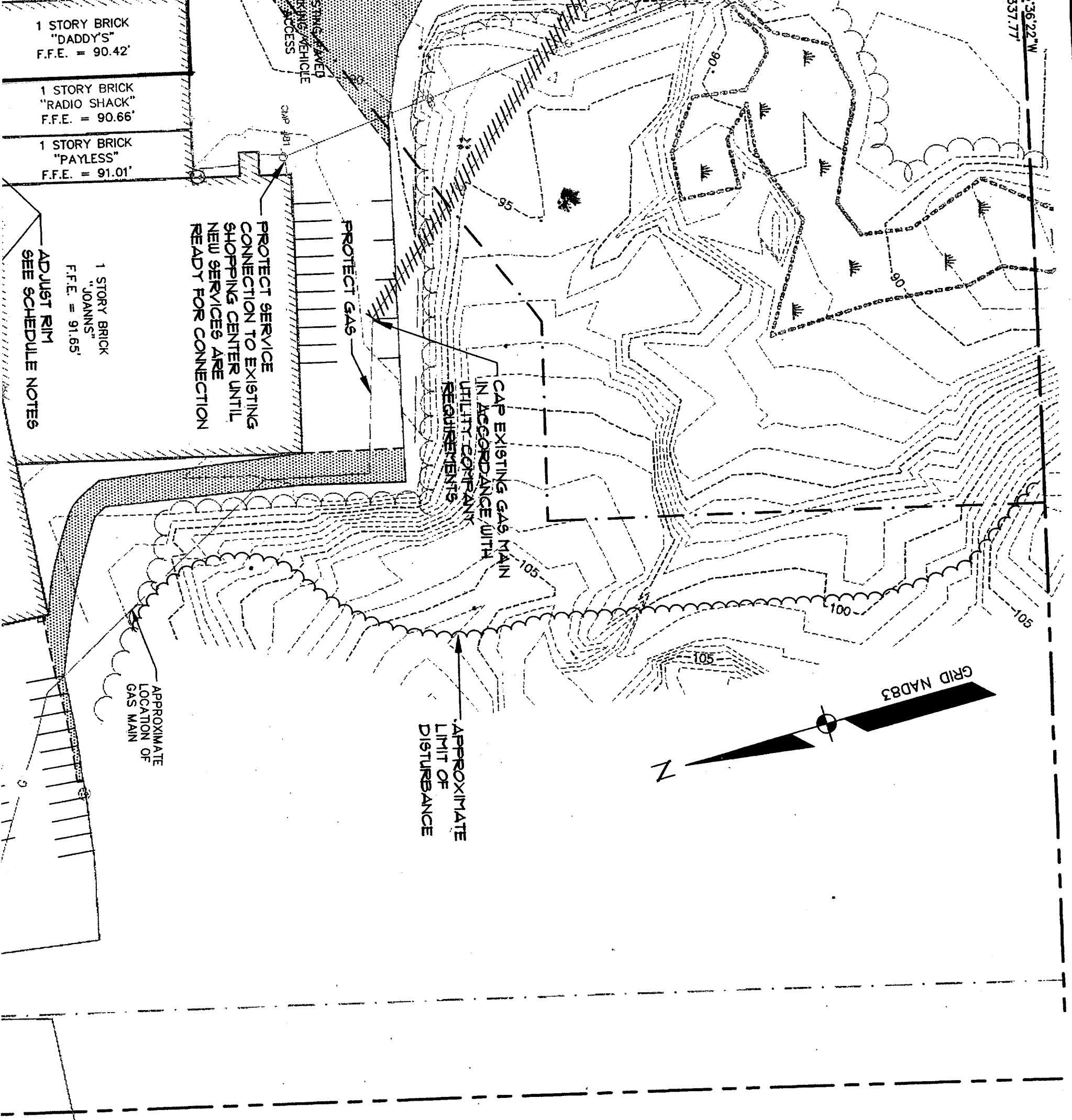


75.36'22" W  
1337.77'



1 STORY BRICK  
"DADDY'S"  
F.F.E. = 90.42'

1 STORY BRICK  
"RADIO SHACK"  
F.F.E. = 90.66'

1 STORY BRICK  
"PAYLESS"  
F.F.E. = 91.01'

PROTECT SERVICE CONNECTION TO EXISTING SHOPPING CENTER UNTIL NEW SERVICES ARE READY FOR CONNECTION

PROTECT GAS

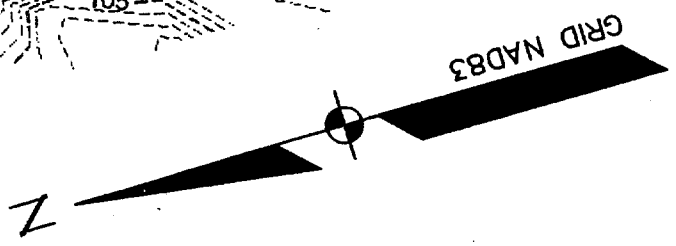
1 STORY BRICK  
"JOANNS"  
F.F.E. = 91.65'

ADJUST RIM  
SEE SCHEDULE NOTES

CAP EXISTING GAS MAIN IN ACCORDANCE WITH UTILITY COMPANY REQUIREMENTS

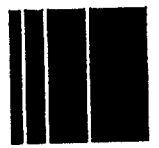
APPROXIMATE LOCATION OF GAS MAIN

APPROXIMATE LIMIT OF DISTURBANCE



N/F  
FLASH ISLAND, INC  
11769/4

**Chicago Technics**  
Engineering Expertise You Can Build On  
One Chabot Street  
Westbrook, Me 04098-1339  
Tel (207) 856-0277



*Danielle D. Betts*  
12.1.04

THIS DRAWING IS THE PROPERTY OF LOWE'S HOME CENTERS, INC. ANY USE OR REPRODUCTION IN WHOLE OR PART IS PROHIBITED WITHOUT THE EXPRESSED WRITTEN CONSENT OF LOWE'S HOME CENTERS, INC. COPYRIGHT 2001. ALL RIGHTS RESERVED.

REVISIONS	
DATE	DESCRIPTION
10-01-04	A ISSUED FOR BID
12-01-04	B CONSTRUCTION

**LOWE'S**  
HOME CENTERS, INC.  
P.O. BOX 1111 N. WILKESBORO, NC 28658



APPROXIMATE  
SEWER MANHOLE  
LOCATION. CONTRACTOR  
TO VERIFY

UTILITIES TO BE  
APPROPRIATELY CAPPED  
AND REMOVED/ABANDONED

POLES TO BE  
REMOVED, TYP.

594,809 S.F.  
13.65 AC.

1 STORY BRICK  
"AMES"  
F.F.E. = 89.20'

1 STORY BRICK  
"SHAWS"  
F.F.E. = 83.60'

1 STORY BRICK  
"FULL BELLY DELI,  
CITI FINANCIAL  
& CARDSMART"  
F.F.E. = 87.69'

**NOTE:**  
REFER TO UTILITY STRUCTURE SCHEDULE  
FOR ALTERATIONS TO EXISTING STRUCTURES.

ADJUST RIM  
SEE SCHEDULE NOTES

PLUG AND ABANDON  
SEWER SERVICE TO  
BUILDING

INSTALL 2" BLOW-  
OFF & ABANDON  
AND CAP  
DISCONTINUED END

RELOCATE  
LIGHT POLE

REMOVE  
STRUCTURES

EXISTING PAVED  
PARKING/VEHICLE  
ACCESS

DMF #72

DMF #71

UNDERGROUND  
FUEL TANK  
TO BE REMOVED  
BY OTHERS  
~~DISCONTINUED AREA~~

EXISTING PAVEMENT  
TO BE REMOVED,  
TYP.

PLUG AND ABANDON  
DRAIN TO BUILDING

PROTECT  
STORY  
DRAIN

N10°26'44"E  
804.44'

80

CONC  
DOCK  
AREA

CONC  
DOCK  
AREA

EXISTING CONC. WA