

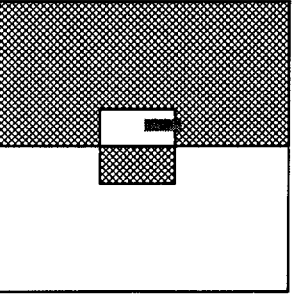
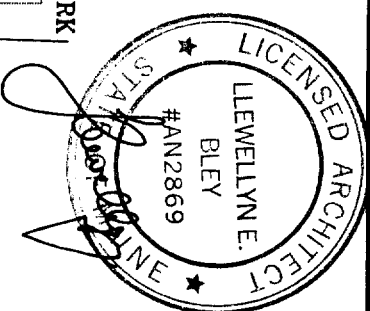
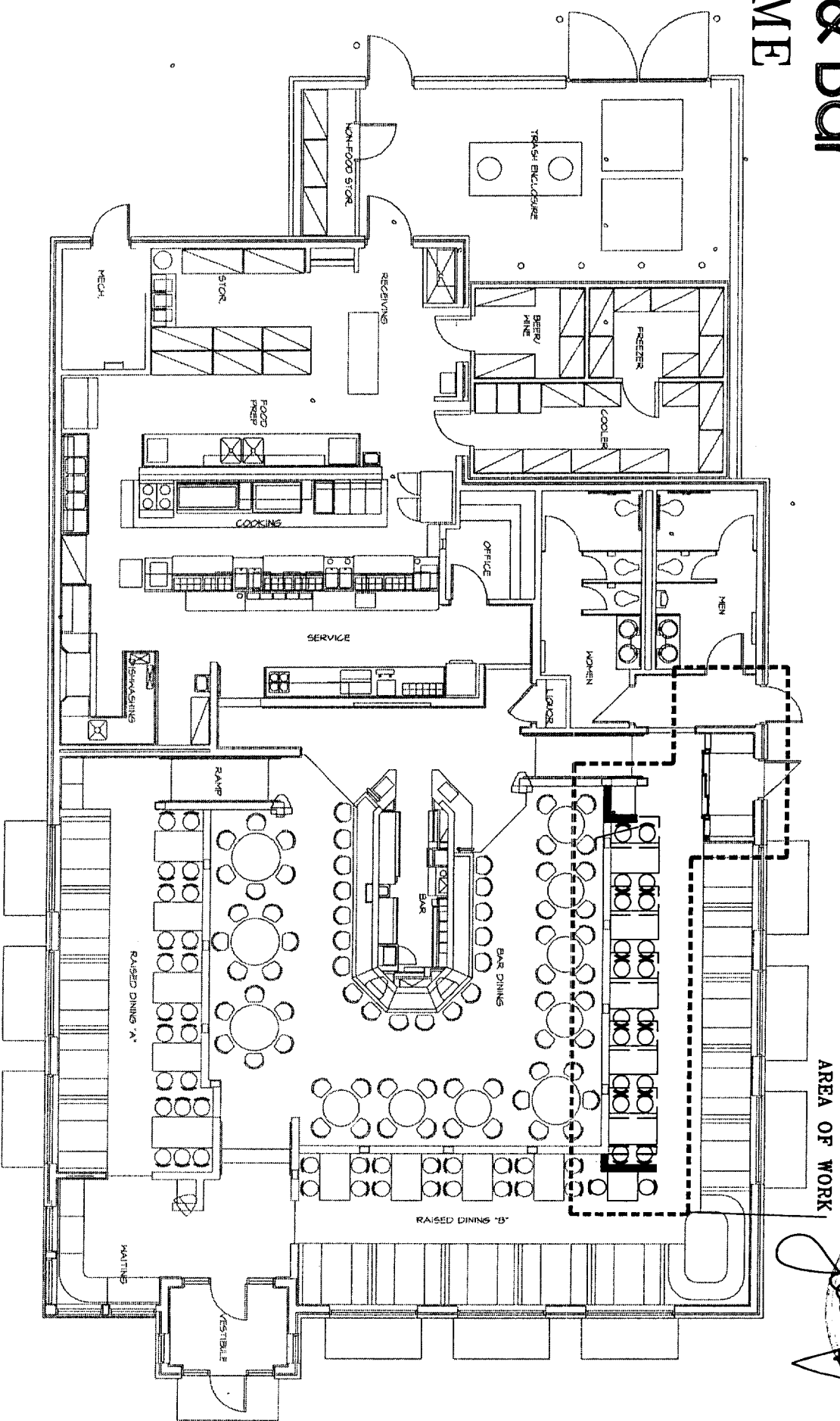
Applebee's®

Neighborhood Grill & Bar

6735 - Portland, ME

LIST OF DRAWINGS

CS	PROJECT COVER SHEET
ARCHITECTURAL	
T1	PLANS
T2	ELEVATIONS
T3	SECTIONS/DETAILS
T4	SECTIONS/DETAILS
T5	SPECIFICATIONS
T6	SPECIFICATIONS

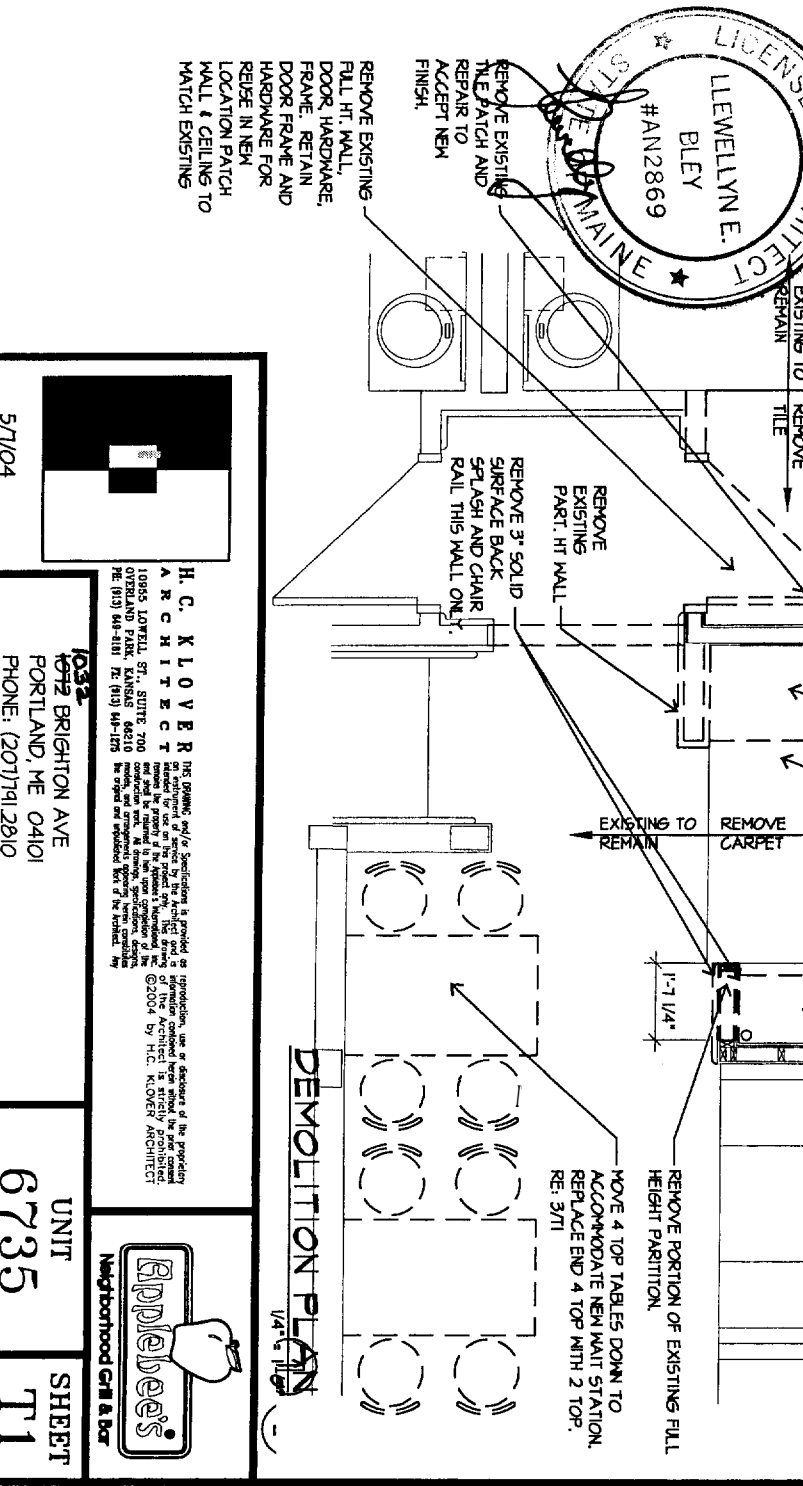
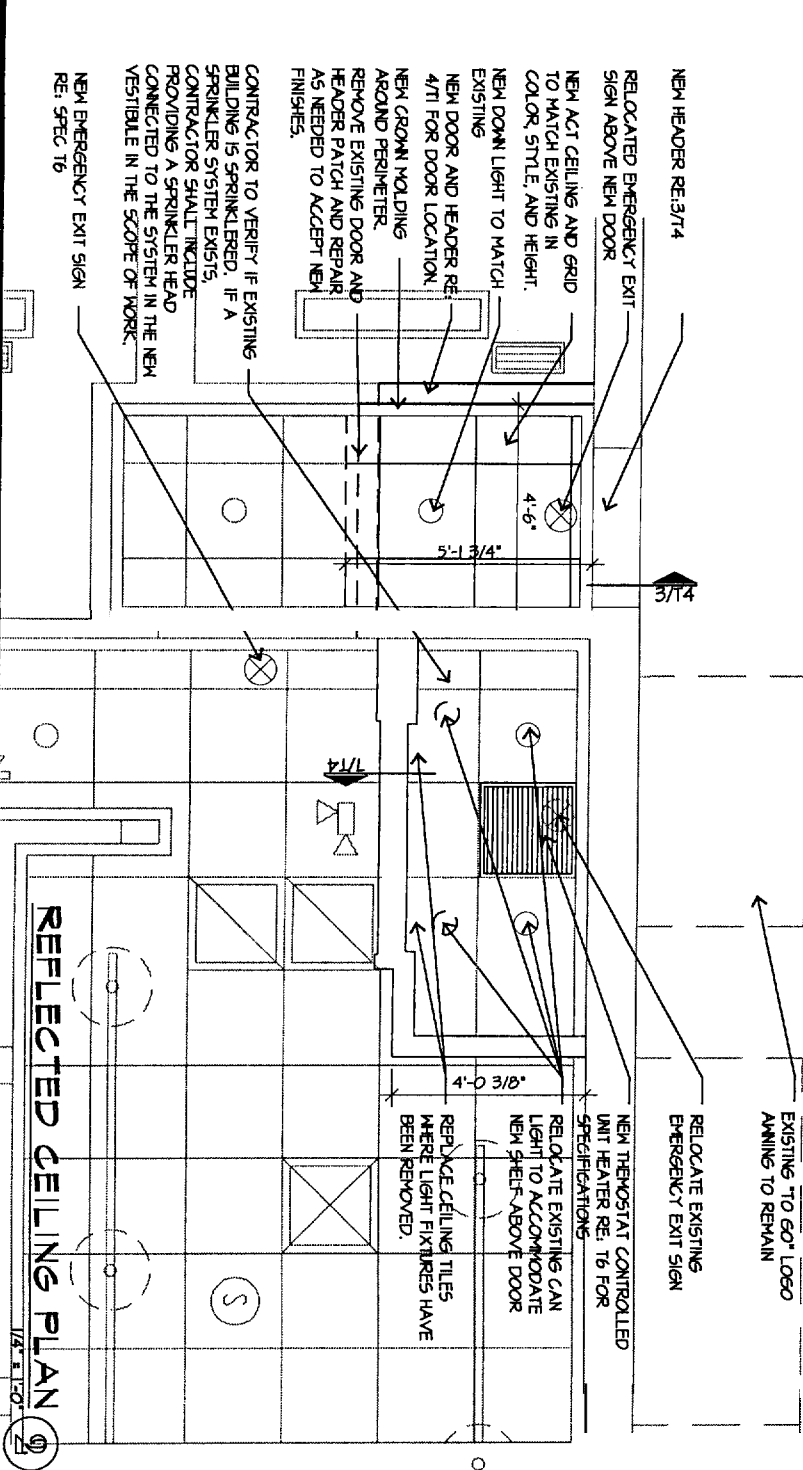
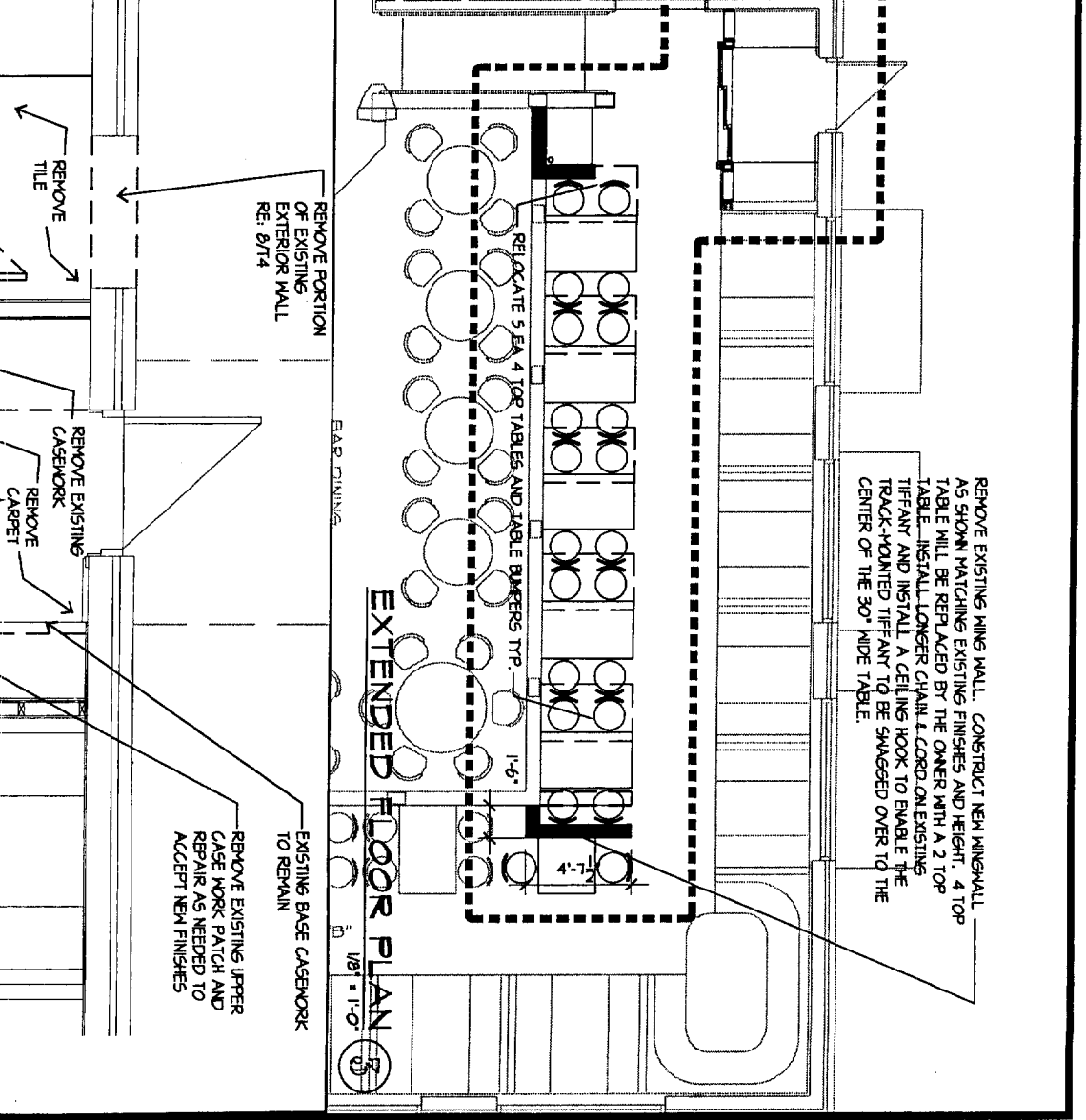
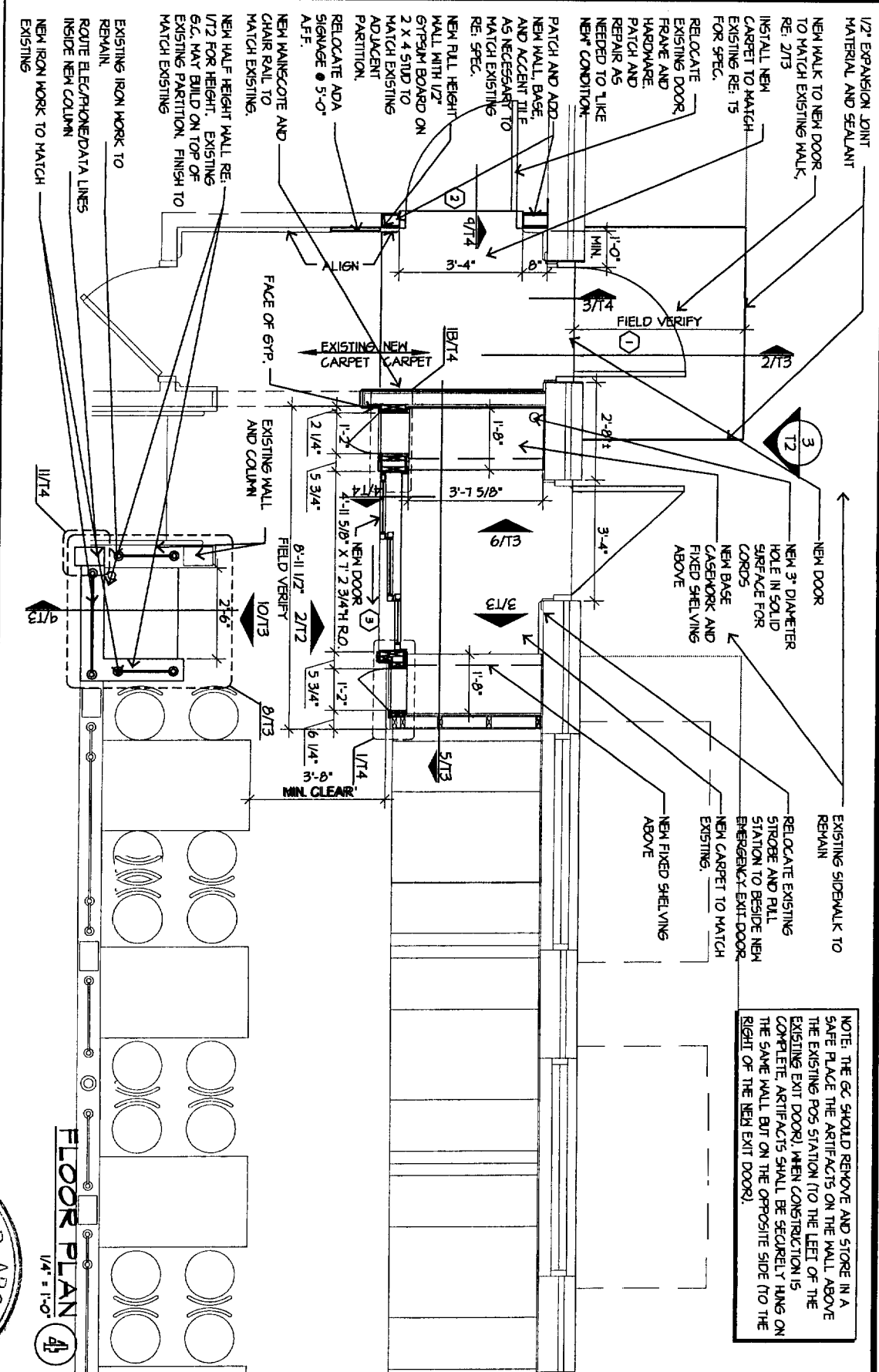


HC KLOVER ARCHITECT

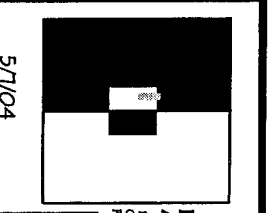
10965 LOWELL, SUITE 700
OVERLAND PARK, KANSAS 66210
PH: 913.649.8181 FX: 913.649.1276

This drawing and/or specifications is provided as an instrument of service by the Architect and is intended for use on the project only. This drawing is not to be used for any other project without the written consent of the Architect. The Architect is not responsible for any errors, omissions, or delays in construction work. All drawings, specifications, details, and arrangements appearing herein constitute the original and approved work of the Architect. Any reproduction, use or alteration of this drawing without the written consent of the Architect is strictly prohibited.
© 2004 by HC KLOVER ARCHITECT

NOTE: THE GC SHOULD REMOVE AND STORE IN A SAFE PLACE THE ARTIFACTS ON THE WALL ABOVE THE EXISTING POS STATION (TO THE LEFT OF THE EXISTING EXIT DOOR). WHEN CONSTRUCTION IS COMPLETE, ARTIFACTS SHALL BE SECURELY HUNG ON THE SAME WALL, BUT ON THE OPPOSITE SIDE (TO THE RIGHT OF THE NEW EXIT DOOR).



MAINE
 LICENSED ARCHITECT
 LLEWELLYN E. BLEY
 #AN2869



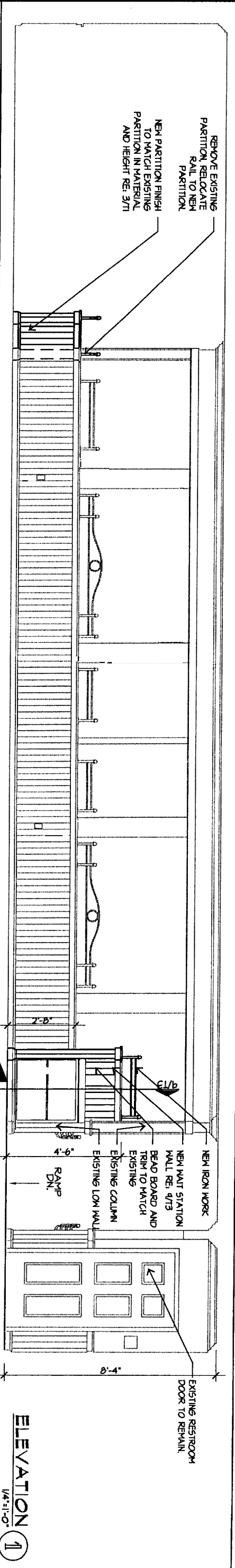
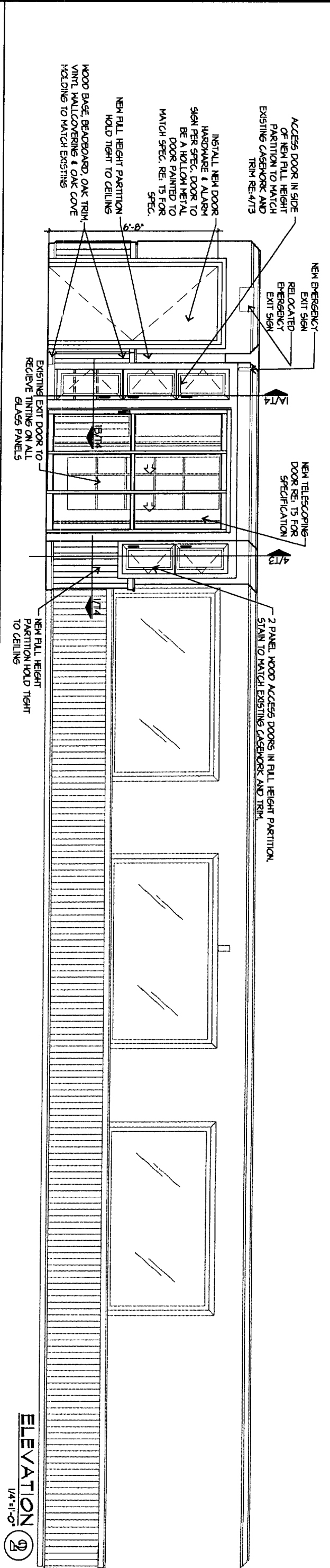
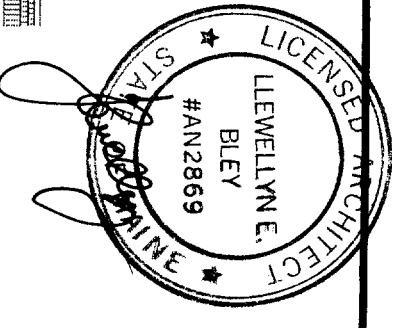
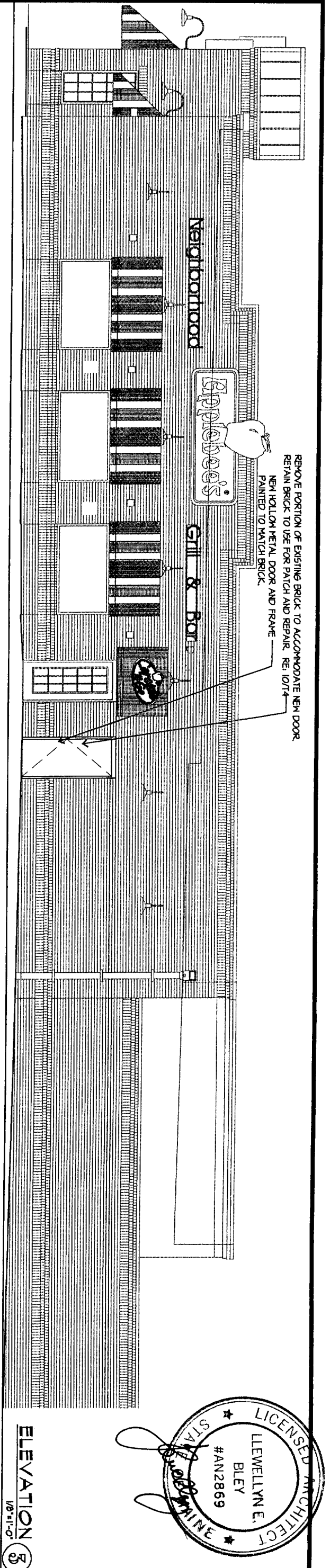
H. C. KLOVER ARCHITECT
 10855 LOWELL ST., SUITE 700
 OVERLAND PARK, KANSAS 66210
 TEL: (913) 941-4181 FAX: (913) 941-1725

1052 BRIGHTON AVE
 PORTLAND, ME 04101
 PHONE: (207) 791-2810

UNIT 6735
 SHEET T1

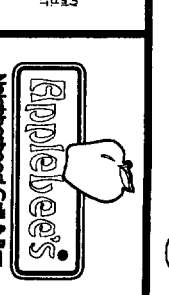
NEIGHBORHOOD GRILL & BAR

THE GRAPHIC ARTIST'S STUDIO is a professional architectural and interior design firm. We provide a full range of services including conceptual design, schematic design, design development, construction documents, and construction administration. We are a member of the American Institute of Architects (AIA) and the Maine State Bar Association.



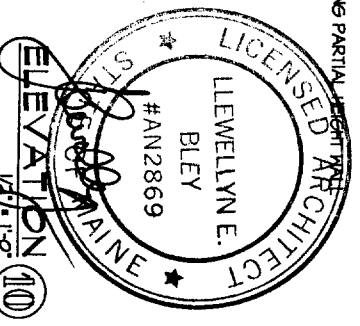
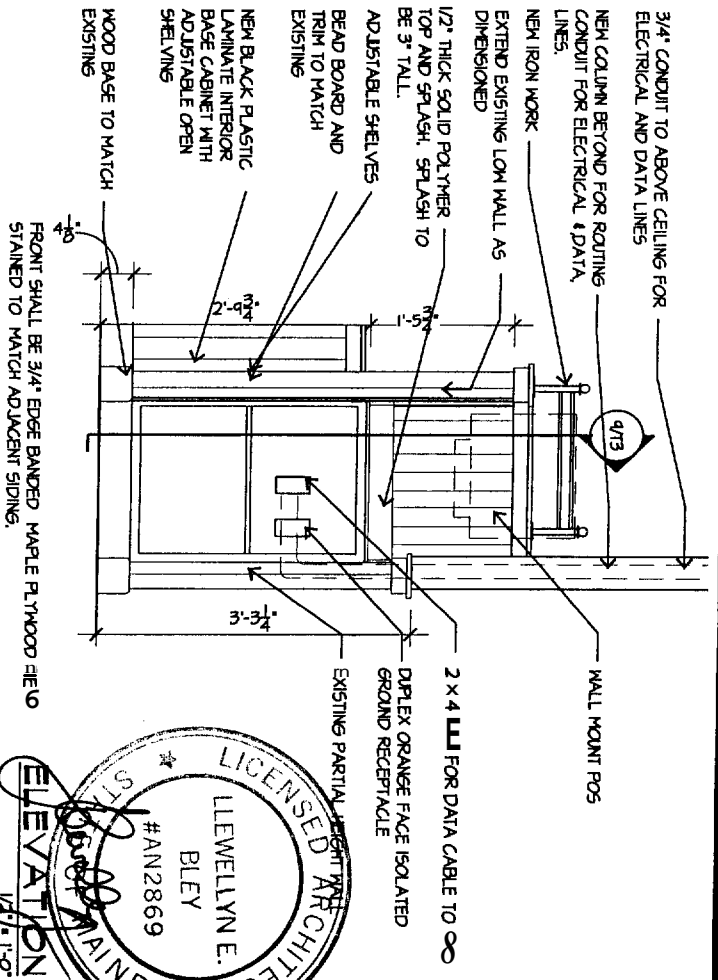
A

H. C. KLOVER ARCHITECT
 10965 LOWELL ST., SUITE 700
 OVERLAND PARK, KANSAS 66210
 PHONE: (913) 644-1181 FAX: (913) 644-0275

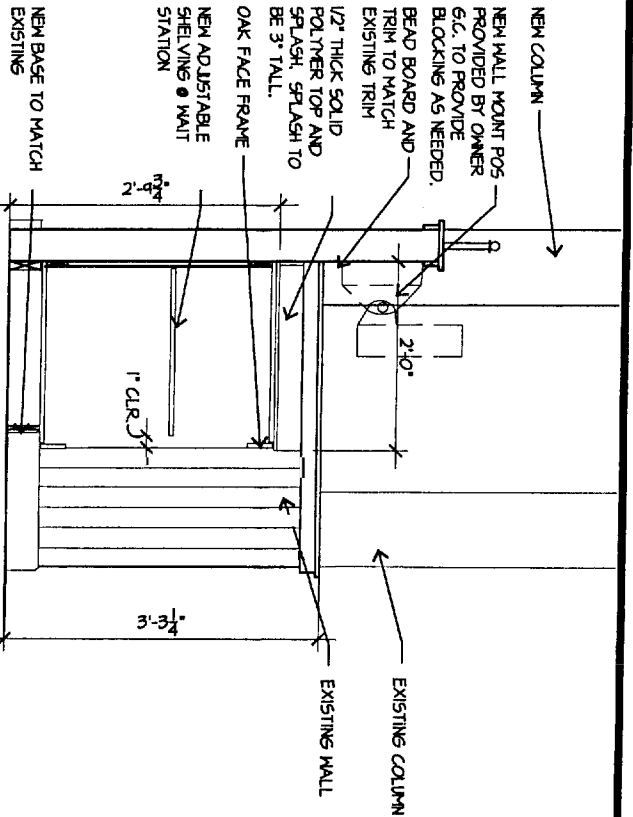


1932 BRIGHTON AVE
 PORTLAND, ME 04101
 PHONE: (207) 791-2910

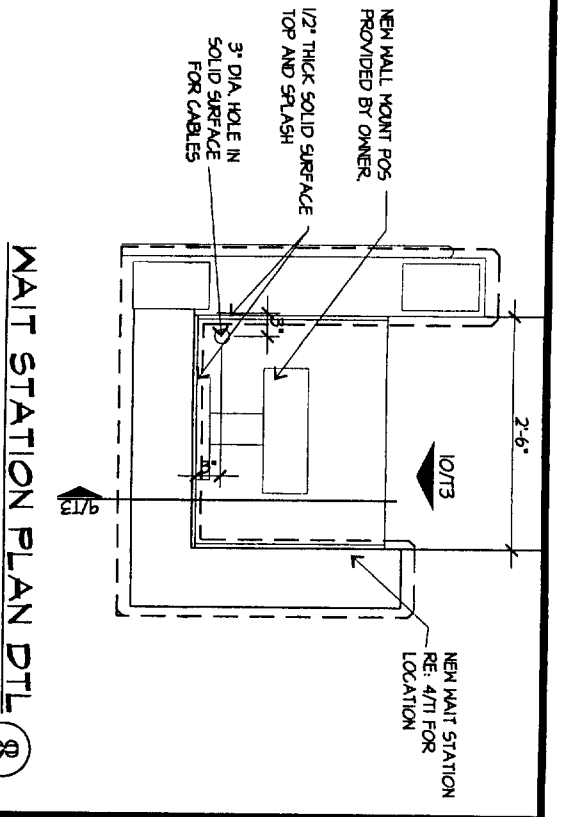
UNIT SHEET
 6735 T2



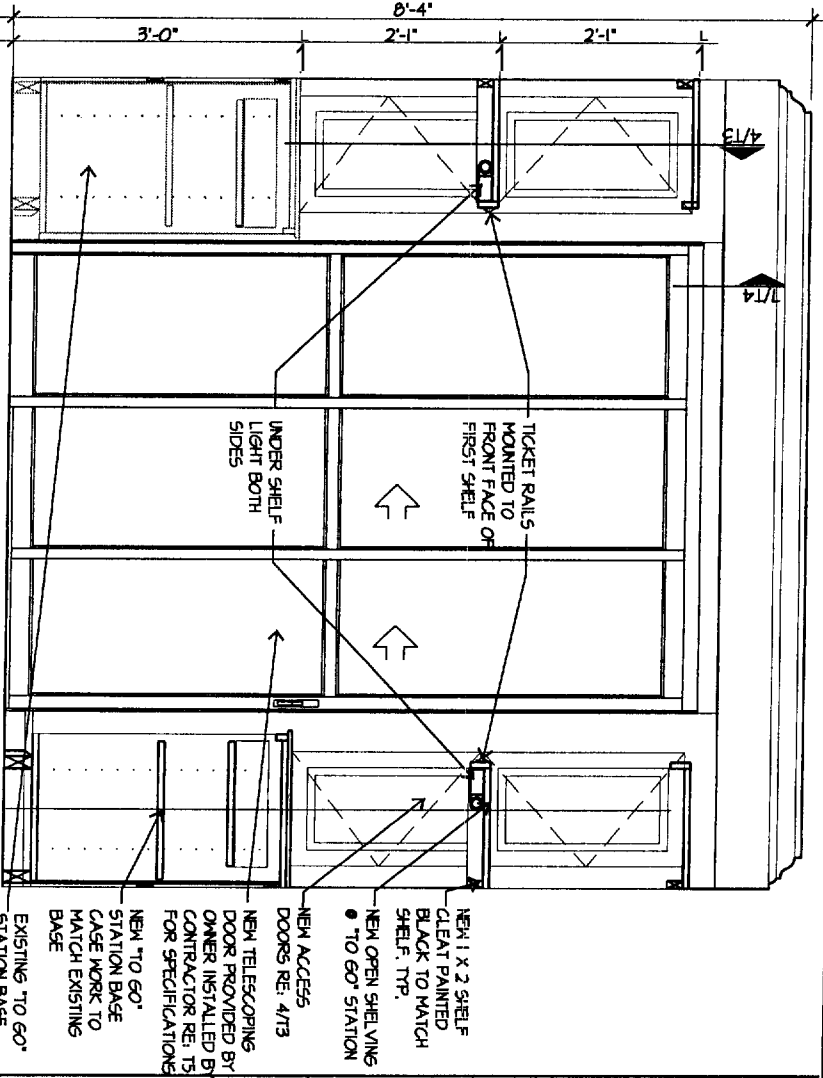
ELEVATION 10
1/2" = 1'-0"



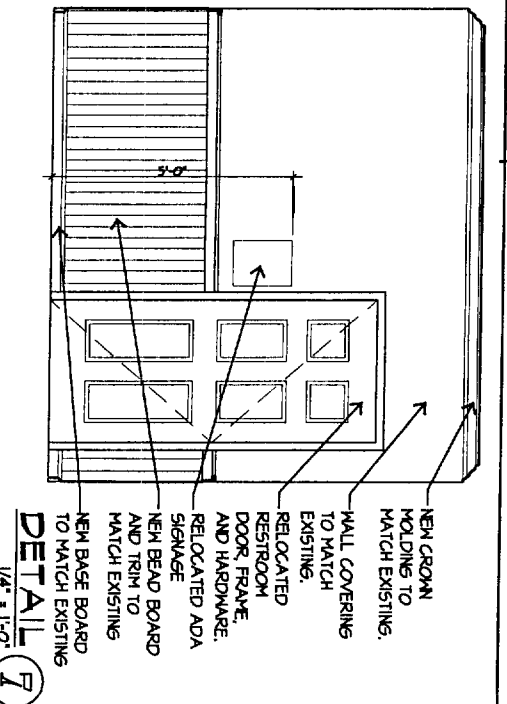
SECTION 9
1/2" = 1'-0"



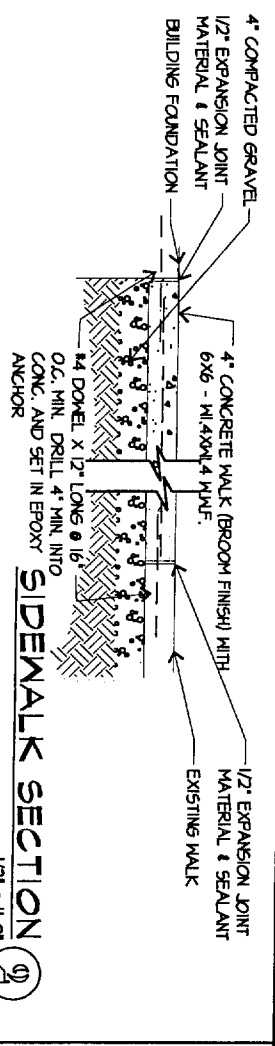
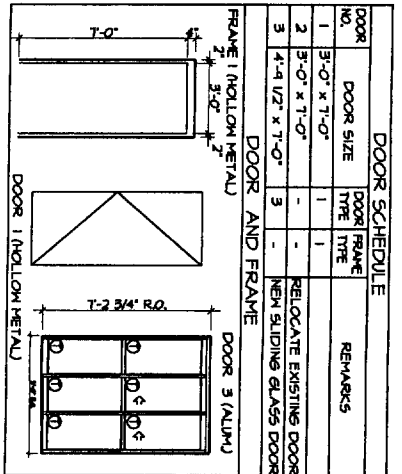
WAIT STATION PLAN DTL 8
1/2" = 1'-0"



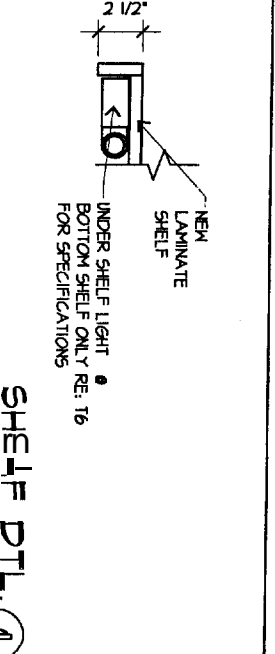
ELEVATION 5
1/8" = 1'-0"



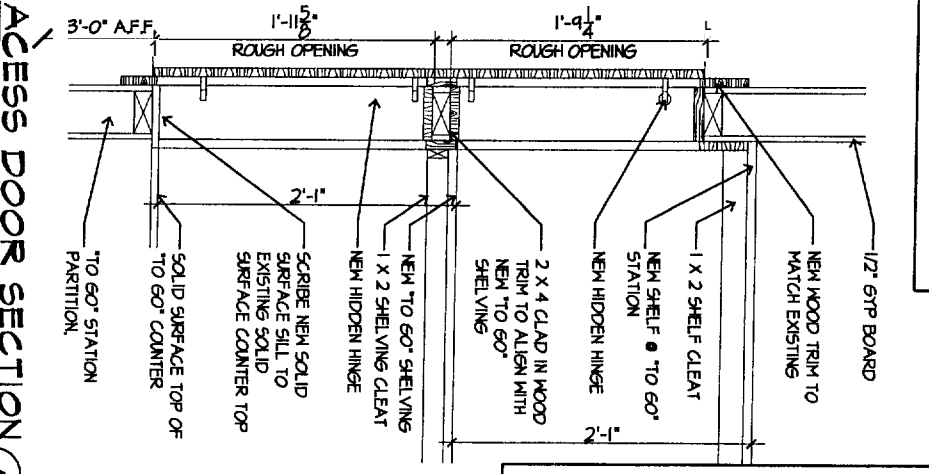
DETAIL 7
1/4" = 1'-0"



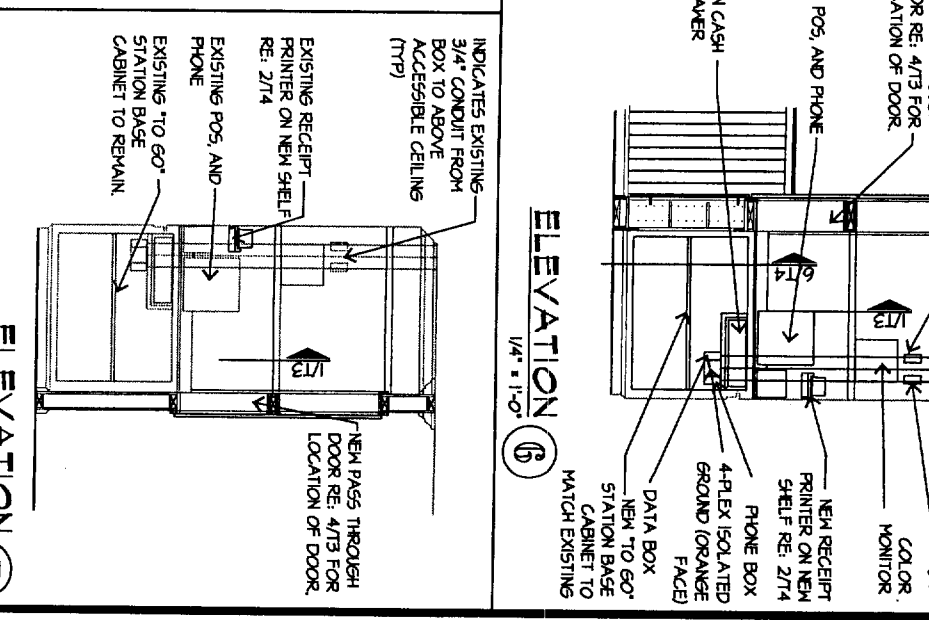
SIDEWALK SECTION 9
1/2" = 1'-0"



SHELF DTL 1
1" = 1'-0"



ACCESS DOOR SECTION 4
3/4" = 1'-0"



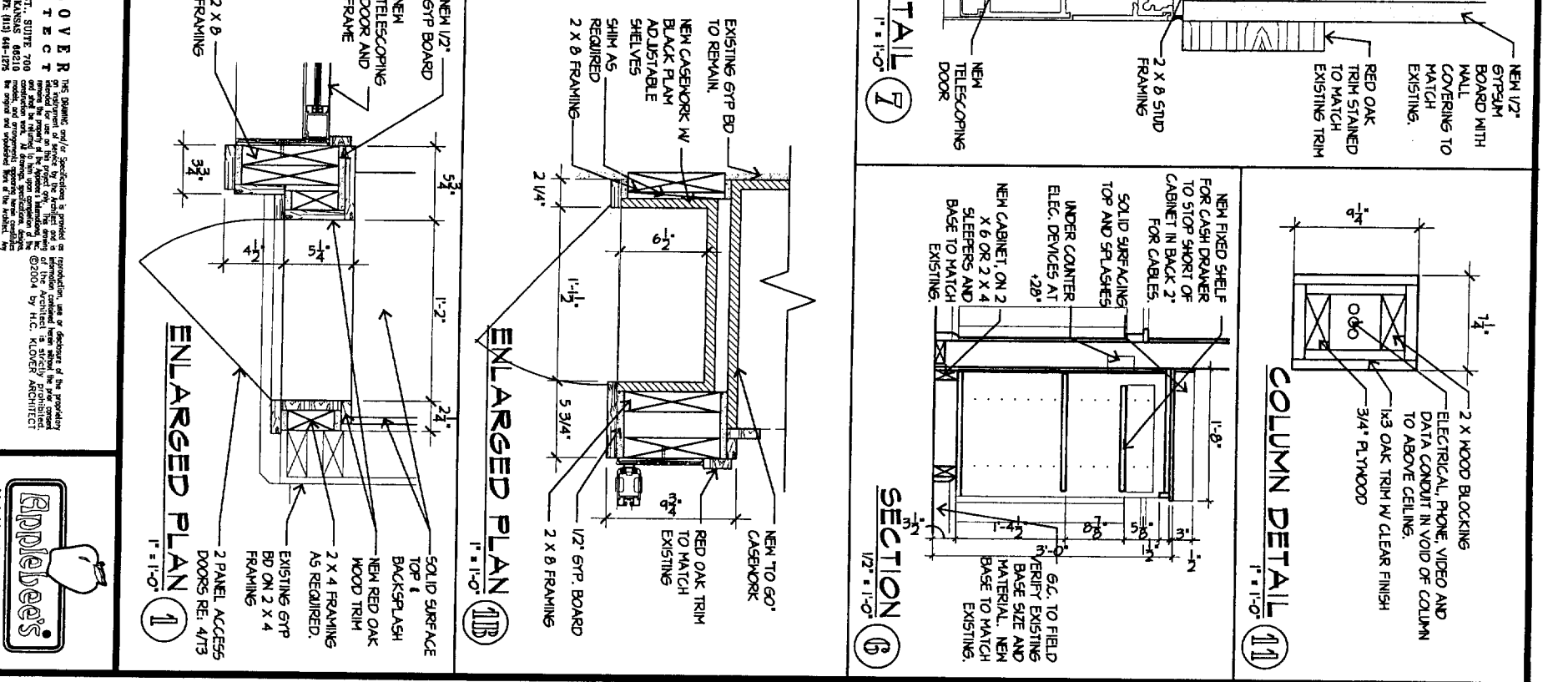
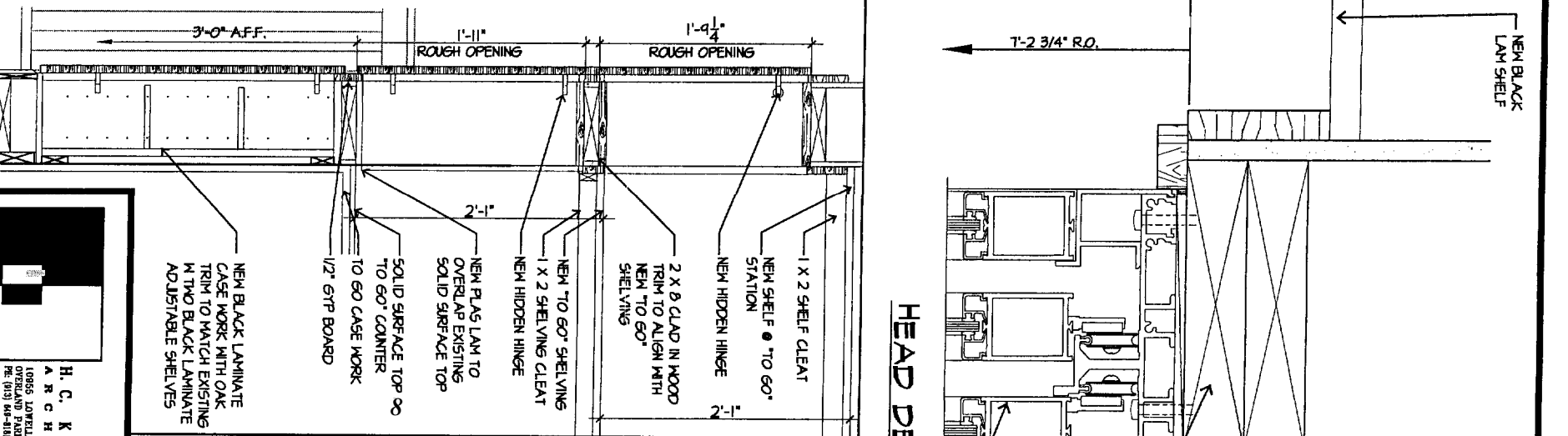
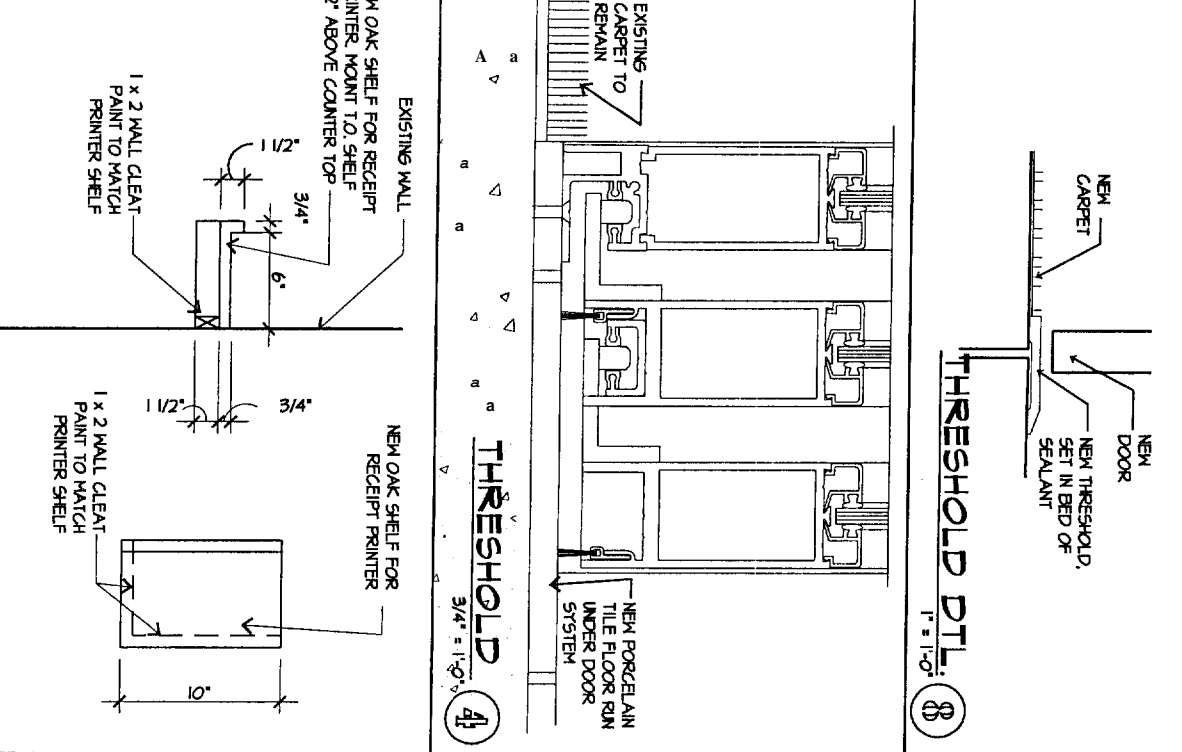
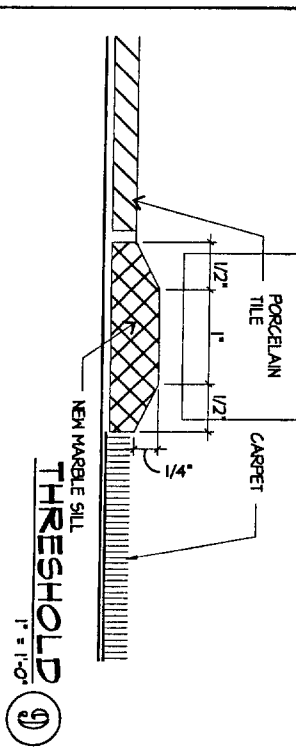
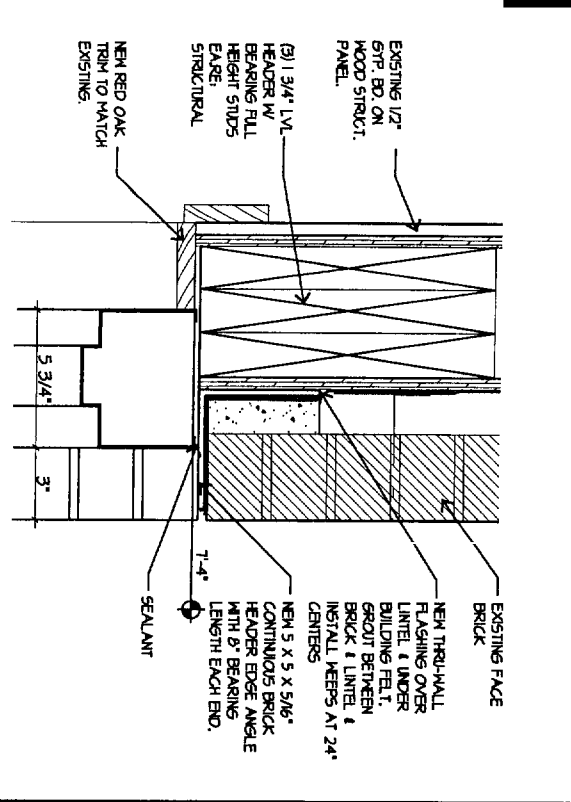
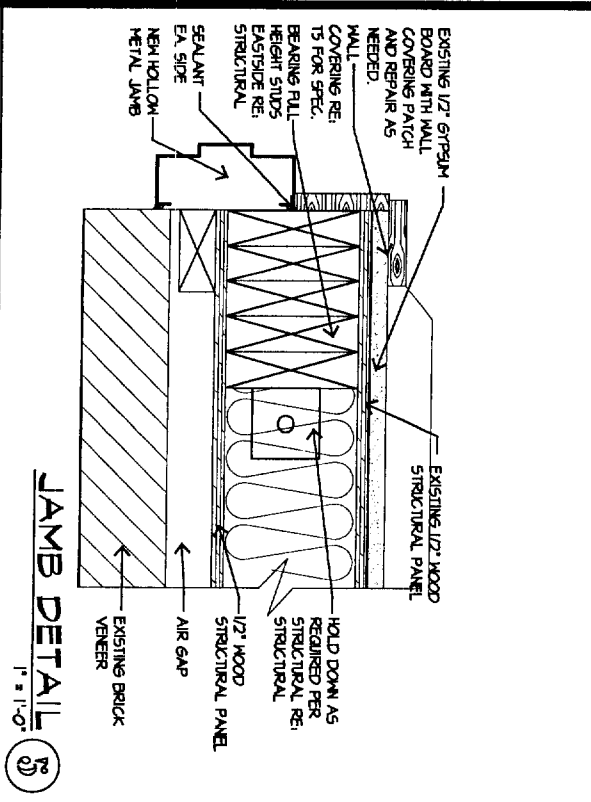
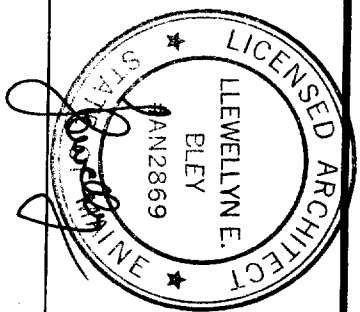
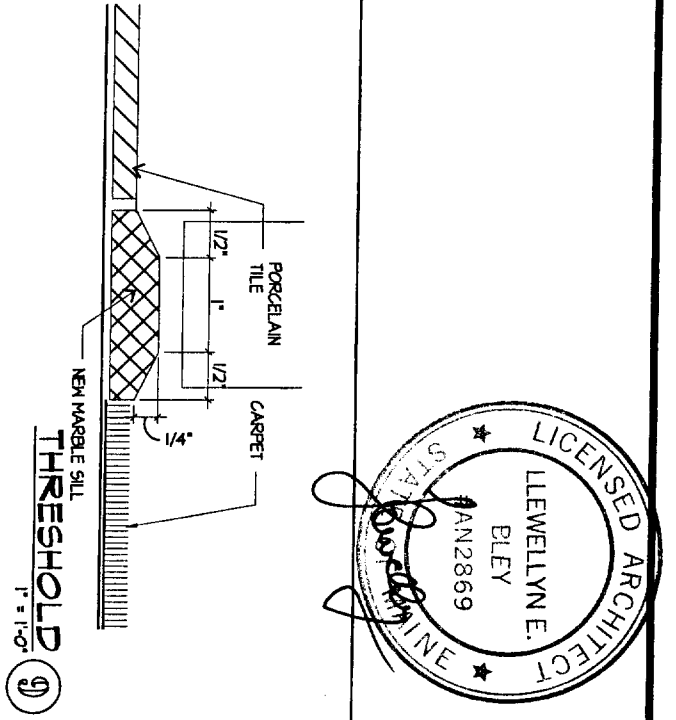
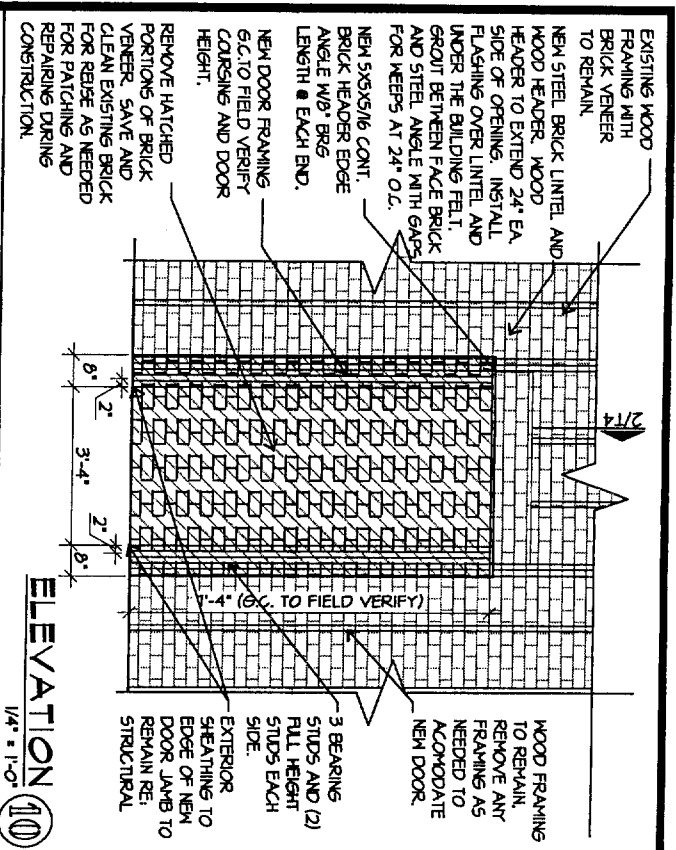
ELEVATION 6
1/4" = 1'-0"

H. C. KLOVER ARCHITECT
10005 LORVELL ST., SUITE 700
PORTLAND, ME 04101
PH: (603) 866-5111 FAX: (603) 866-5128

THIS DRAWING, SPECIFICATIONS, AND SCHEDULES IS PROVIDED IN CONNECTION WITH THE PROVISIONS OF THE ARCHITECTURE CONTRACT AND IS NOT TO BE REPRODUCED OR TRANSMITTED IN ANY FORM OR BY ANY MEANS, ELECTRONIC OR MECHANICAL, INCLUDING PHOTOCOPYING, RECORDING, OR BY ANY INFORMATION STORAGE AND RETRIEVAL SYSTEM, WITHOUT THE WRITTEN PERMISSION OF THE ARCHITECT.

UNIT SHEET 6735 T3

5/7/04



H. C. KLOVER ARCHITECT
 1085 LAUREL ST., SUITE 200
 PORTLAND, ME 04101
 TEL: (207) 761-1272
 FAX: (207) 761-1272

UNIT SHEET T4

6735

5/7/04

