

RESPONSIBILITY SCHEDULE

ITEM	SUPPLIED		INSTALLED BY		INSTALL./CONN. BY			
	FRANCHISEE	GC	FRANCHISEE	GC	DC	EC	MC	PC
BUILDING/HEALTH PERMIT	*		*		*	*	*	*
<i>Franchisee or Franchisee's Architect shall apply for the permits. GC to pick up and pay for the permit.</i>								
BUILDING DRAWINGS	*		*					
<i>Franchisee to provide General Contractor drawings to use for construction.</i>								
ELECTRONICS								
SOUND SYSTEM	*		*					
<i>Installed by vendor, utility connections by General Contractor as noted</i>								
POS (POINT OF SALE)	*		*		*	*	*	*
TELEPHONE SYSTEM	*		*		*	*	*	*
SECURITY SYSTEM	*		*		*	*	*	*
EQUIPMENT								
FOOD SERVICE EQUIPMENT	*		*		*	*	*	*
<i>Refer to EQUIPMENT SCHEDULE</i>								
SOFT DRINK EQUIPMENT	*		*		*	*	*	*
<i>Installed by vendor, utility connections by General Contractor as noted</i>								
FIRE EXTINGUISHERS	*		*		*	*	*	*
VENT:								
HOOD	*		*		*	*	*	*
STAINLESS STEEL DUCT COVER	*		*		*	*	*	*
FAN AND ROOF CURB	*		*		*	*	*	*
DUCT WORK	*		*		*	*	*	*
CONSTRUCTION MATERIALS								
DOOR FRAMES/HARDWARE	*		*		*	*	*	*
ELIASON EASY SWING DOOR (IF REQ'D)	*		*		*	*	*	*
ELIASON DOOR FRAME (IF REQ'D)	*		*		*	*	*	*
TOILET ACCESSORIES	*		*		*	*	*	*
PLUMBING FIXTURES	*		*		*	*	*	*
MOP SINK	*		*		*	*	*	*
WATER HEATER	*		*		*	*	*	*
WATER FILTER SYSTEM (IF REQUIRED)	*		*		*	*	*	*
FURNISHINGS SEE SCHEDULE								
FURNITURE								
FINISH MATERIALS								
BASE - B1								
CEILING:								
C1	*		*		*	*	*	*
C2	*		*		*	*	*	*
C3	*		*		*	*	*	*
C4	*		*		*	*	*	*
CHAIR RAIL - CH1								
FLOORING:								
F1	*		*		*	*	*	*
F2	*		*		*	*	*	*
F3	*		*		*	*	*	*
F4	*		*		*	*	*	*
F5	*		*		*	*	*	*
PAINT:								
P1	*		*		*	*	*	*
P2	*		*		*	*	*	*
P3	*		*		*	*	*	*
P4	*		*		*	*	*	*
TRANSITION MOLDING - TM1								
VINYL WALL COVERING								
V1	*		*		*	*	*	*
V2	*		*		*	*	*	*
V3	*		*		*	*	*	*
FIBERGLASS REINFORCED PLASTIC - FRP								
FR1	*		*		*	*	*	*
LIGHTING SEE SCHEDULE								
FIXTURE								
SIGNAGE SEE SCHEDULE								
INTERIOR SIGNAGE								
EXTERIOR SIGNAGE								

REFERENCED SYMBOLS

KEYNOTE		AMENITIES	INTERIOR ELEVATION	
		EQUIPMENT	VERTICAL ELEVATION	
		FINISH	OBJECT ELEVATION	
		FURNITURE	ROOM NAME/NUMBER	
		MILLWORK	ROOM NAME	
DRAWING TITLE	PLAN		WALL TYPE	
	1/4"=1'-0"		SECTION	
DRAWING TITLE W/ REFERENCE NO	XX FLOOR PLAN		DOOR NUMBER	
	1/4"=1'-0"			

ABBREVIATIONS

AFF ABOVE FINISH FLOOR	GALV GALVANIZED	RAD RADIUS
ATC ACOUSTIC TILE CEILING	GC GENERAL CONTRACTOR	REF REFERENCE
A/C AIR CONDITIONING	GB GRAB BAR	RET RETURN
ALUM ALUMINUM	GPF GALLONS PER FLUSH	RA RETURN AIR ROOM
	GWV GYPSUM WALL BOARD	RM ROOM
BD BOARD	HDW HARDWARE	UNO UNLESS NOTED
BDG BOTTOM OF BUILDING	HTG HEATING	UR OTHERWISE URINAL
	HVAC HEATING/VENTILATION/AIR CONDITIONING	
CLG CEILING MOUNTED	HT HEIGHT	VT VENT
CM CERAMIC TILE	HM HOLLOW METAL	VERT VERTICAL
CO CLEAN OUT	HORZ HORIZONTAL	VB VINYL BASE
CW COLD WATER	HW HOT WATER	
COL COLUMN		WC WATER CLOSET
CONC CONCRETE	IN INCH	WP WATER PROOF
CMU CONCRETE MASONRY UNIT	ID INDIRECT DRAIN	W WIDTH
	JT JOINT	W/ WITH
DC DATA/TELEPHONE CONTRACTOR	LAM LAMINATE (ED)	W/O WITH OUT
	LV LAVATORY	WD WOOD
DET DETAIL		SCH SCHEDULE
DIM DIMENSION	MATL MATERIAL	SEC SECTION
DD DIRECT DRAIN	MC MECHANICAL CONTRACTOR	SEL SELECT
DR DOOR	MECH MECHANICAL	SHT SHEET
DB DRAIN BOARDS	MFR MANUFACTURE (ER)	SIM SIMILAR
DWG DRAWING	MIN MINIMUM	SCW SOLID CORE WOOD
	MR MIRROR	SPK SPEAKER
EA EACH	MISC MISCELLANEOUS	SPEC SPECIFICATIONS
ELEC ELECTRICAL CONTRACTOR	NIC NOT IN CONTRACT	SQ SQUARE
EL ELEVATION	NTS NOT TO SCALE	STD STANDARD
EQ EQUAL	NO NUMBER	STL STEEL
EXG EXISTING		ST STORAGE
EXP EXPANSION	OC ON CENTER	STR STRUCTURAL
EXT EXTERIOR	OP OPENING	SU STUB UP
		SUP SUPPLY
FOF FACE OF FINISH	PC PLUMBING CONTRACTOR	SA SUPPLY AIR
FOS FACE OF STUDS	PNL PANEL	TEL TELEPHONE
FT FEET	PR PAPER	THK THICK (NESS)
FRP FIBERGLASS REINFORCED PLASTIC	PLAM PLASTIC LAMINATE	TL TILE
FIN FINISH	PWD PLYWOOD	TO TOP OF
FLR FLOOR	QTY QUANTITY	TOS TOP OF SLAB
FD FLOOR DRAIN		TVR TYPICAL
FS FLOOR SINK		VTR VENT THRU ROOF



RETAIL CENTER 1030 Brighton Avenue
PINE TREE Portland, ME 04102

QUIZNO'S STORE NO. 6757

SHEET INDEX

- ARCHITECTURAL:
- TS.1 TITLE SHEET
 - A1.1 EQUIPMENT PLAN SCHEDULES
 - A1.2A POWER/PLUMBING FLOOR PLAN
 - A1.2B POWER/PLUMBING SCHEDULES
 - A1.3 CEILING PLAN & FINISH PLAN
 - A2.1 SCHEDULES, WALL TYPES & RESTROOM ELEVATIONS
 - A3.1 INTERIOR ELEVATIONS
 - A4.1 DETAILS

Q2002B



CODE SUMMARY

LEASE SPACE AREA: 1665 S.F.
CODE: IBC 2003, NFPA 101
OCCUPANCY CLASSIFICATION: ASSEMBLY A3, <50
BUILDING TYPE: TYPE II
OCCUPANT LOAD:
DINING / AREA: 31 FIXED SEATS
SERVICE LINE: 100 S.F. / 7 = 14
SERVICE / BACKROOM AREA: 768 S.F. / 200 = 4
RESTROOM: 56 S.F. / 0 = 0
TOTAL: 49

revisions

submittals:

phase:
FOR CONSTRUCTION

project no 6757
date 1-18-06
file ME-6757-Pine Tree
sheet title

TITLE SHEET

sheet designation:
TS.1

VICINITY MAP



KEY MAP





location: Q210228

Quiznos
SUB

RETAIL CENTER

Pine Tree
Shopping Center
1030 Brighton Avenue
Portland, Me. 04102

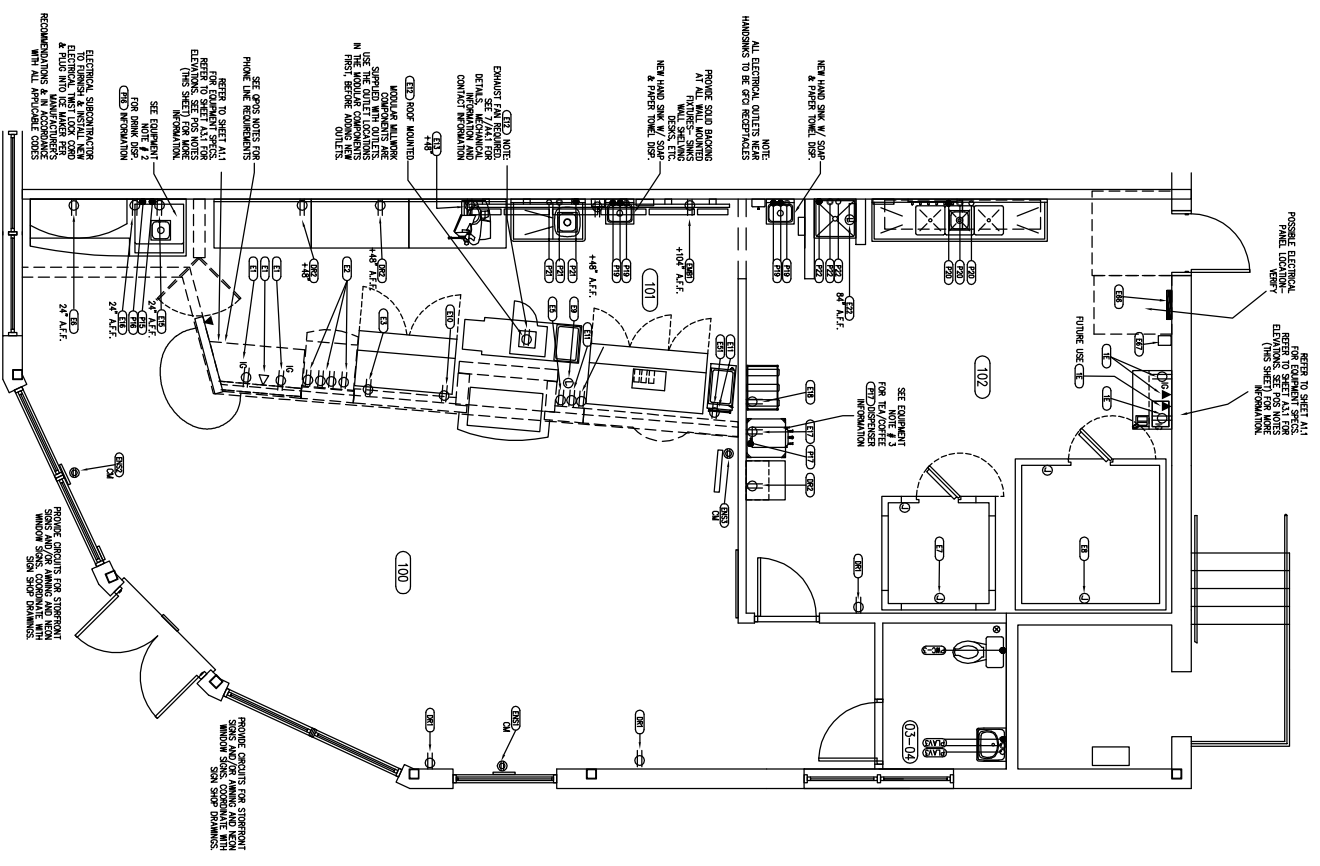
store no. 6757

FOR
CONSTRUCTION

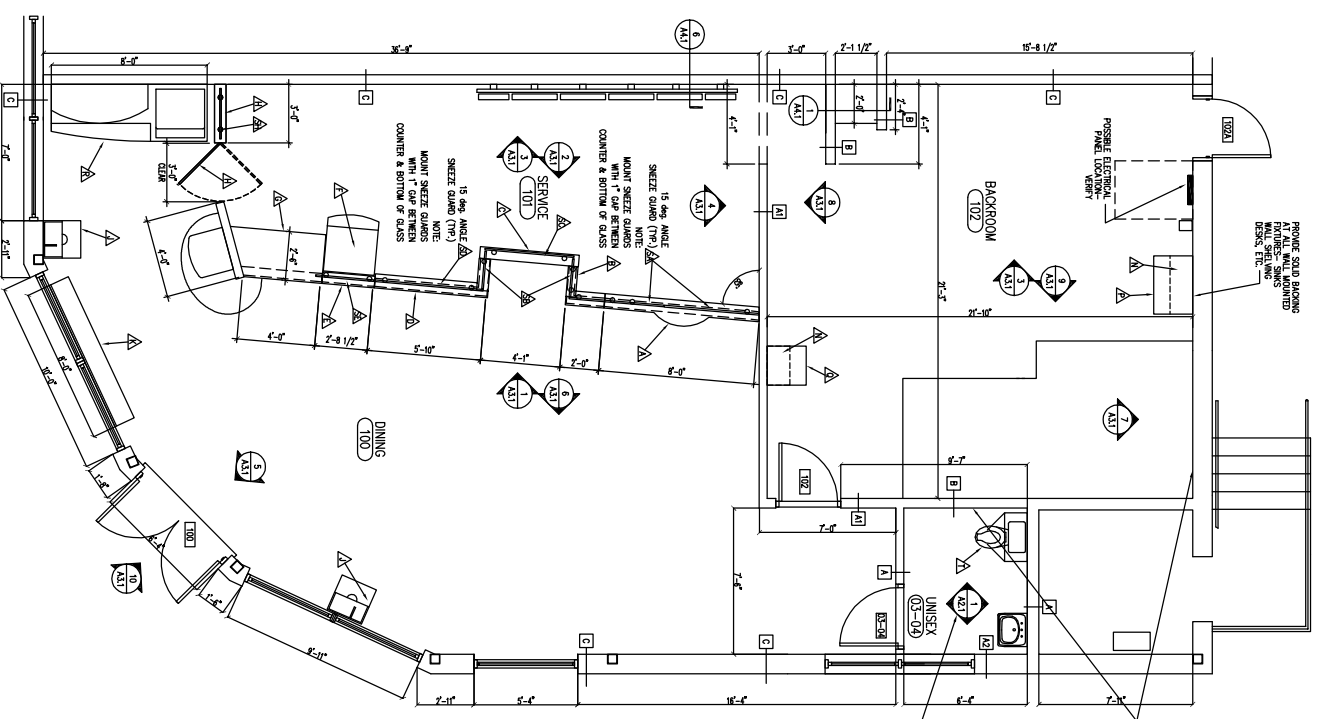
project no. 6757
date 1-18-06
file ME-6757-Prime Tree
sheet title

POWER/PLUMBING
PLANS

sheet designation:
A1.2 A

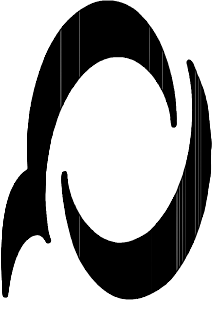


POWER AND PLUMBING PLAN
SCALE: 1/4" = 1'-0"
NORTH



FLOOR PLAN
SCALE: 1/4" = 1'-0"
NORTH

SCHEDULES ON SHEET A1-2B



location: Q2002B

**Quiznos
SUB**

RETAIL CENTER

Pine Tree
Shopping Center
1030 Brighton Avenue
Portland, Me. 04102

sheet no. 6757

project no. 6757
date 1-18-06
file ME-6757-Pine Tree
sheet title

**POWER/PLUMBING
SCHEDULES**

sheet designation:
A1.2 B

EQUIPMENT SCHEDULE table with columns: MARK, QTY, DESCRIPTION, MANUFACTURER, MODEL NO, WATER, GAS, ELECTRICAL, etc.

EQUIPMENT NOTES:

- 1. NEW OR ADDITIONAL ELECTRICAL PANELS WILL BE PROVIDED BY THE OWNER...
2. 1/2" WATER LINE WITH SHUT-OFF VALVE...
3. 1/2" WATER LINE WITH SHUT-OFF VALVE...

Q.P.O.S. EQUIPMENT SCHEDULE table with columns: MARK, QTY, DESCRIPTION, MANUFACTURER, MODEL NO. Includes items like COFFEE DISPENSER, FAX MACHINE, etc.

REMARKS for Q.P.O.S. schedule: LOCATE AS SHOWN, BOLT TO FLOOR, LOCATE AS SHOWN, etc.

INSTALLER NOTES: THE MANUFACTURER COMPONENTS ARE PROVIDED BY THE OWNER... ALL ELECTRICAL OUTLETS NEAR HAND SINKS TO BE GFCI RECEPTALS.

ELECTRICAL LEGEND

- DIRECT RECEPT 6" x 6" AFF.
□ DIRECT RECEPT (LUSH)
◀ TELEPHONE VOICE LINE
◁ TELEPHONE DATA LINE

PLUMBING LEGEND

- ⊞ TO - FLOOR DRAIN
⊟ HUB DRAIN (REQUIRED ONLY IF REMOTE COMPRESSION IS USED)
○ HOT WATER
● COLD WATER
◦ DRAIN

ELECTRICAL LEGEND

- DIRECT RECEPT 6" x 6" AFF.
□ DIRECT RECEPT (LUSH)
▶ TELEPHONE VOICE LINE
▷ TELEPHONE DATA LINE

PLUMBING LEGEND

- ⊞ TO - FLOOR DRAIN
⊟ HUB DRAIN (REQUIRED ONLY IF REMOTE COMPRESSION IS USED)
○ HOT WATER
● COLD WATER
◦ DRAIN

FOR
CONSTRUCTION

project no. 6757
date 1-18-06
file ME-6757-Pine Tree
sheet title

**POWER/PLUMBING
SCHEDULES**

sheet designation:
A1.2 B



location: Q21002B
Quiznos SUB
 RETAIL CENTER
 Pine Tree Shopping Center
 1030 Brighton Avenue
 Portland, Me. 04102
 sheet no. 6757

FOR CONSTRUCTION

project no. 6757
 date 1-18-06
 file ME-6757-Pine Tree
 sheet title

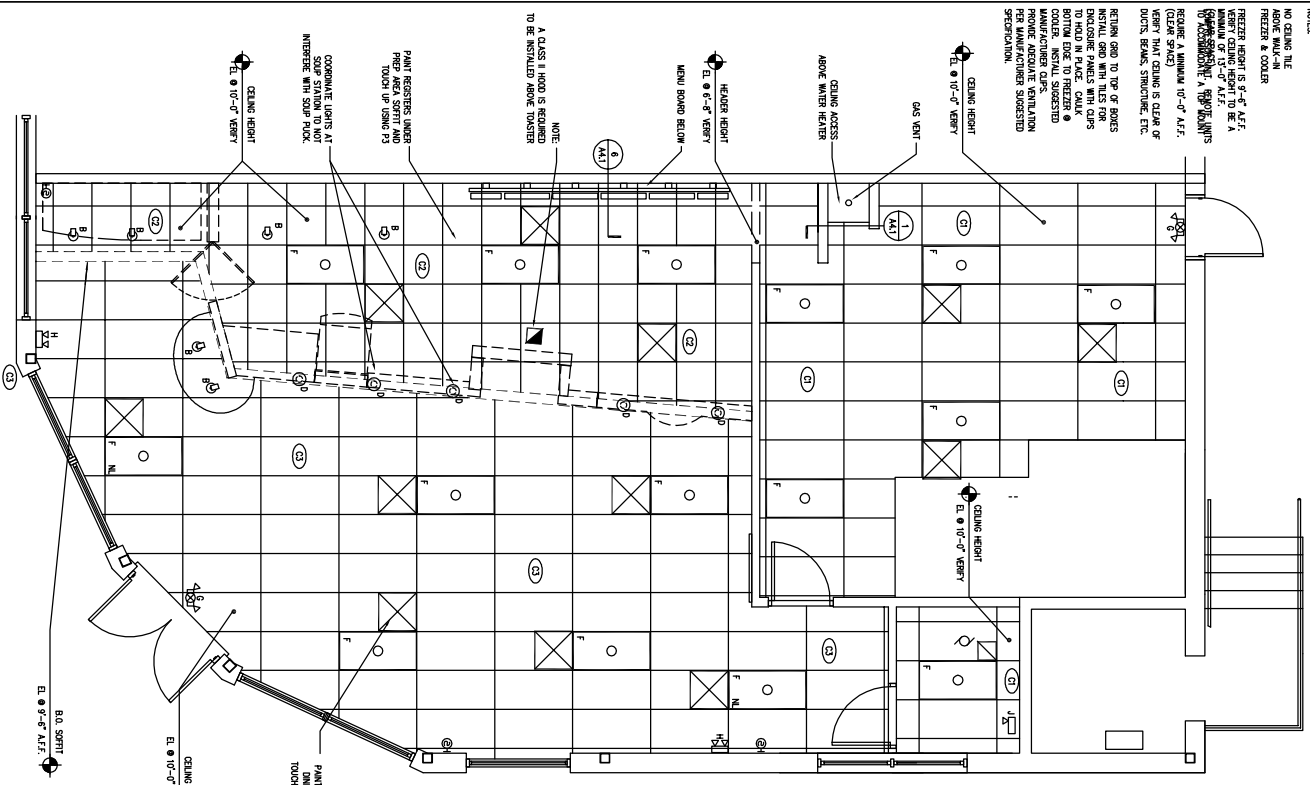
CEILING PLAN & FINISH PLAN

sheet designation:

A1.3

COOLERS AND FREEZERS

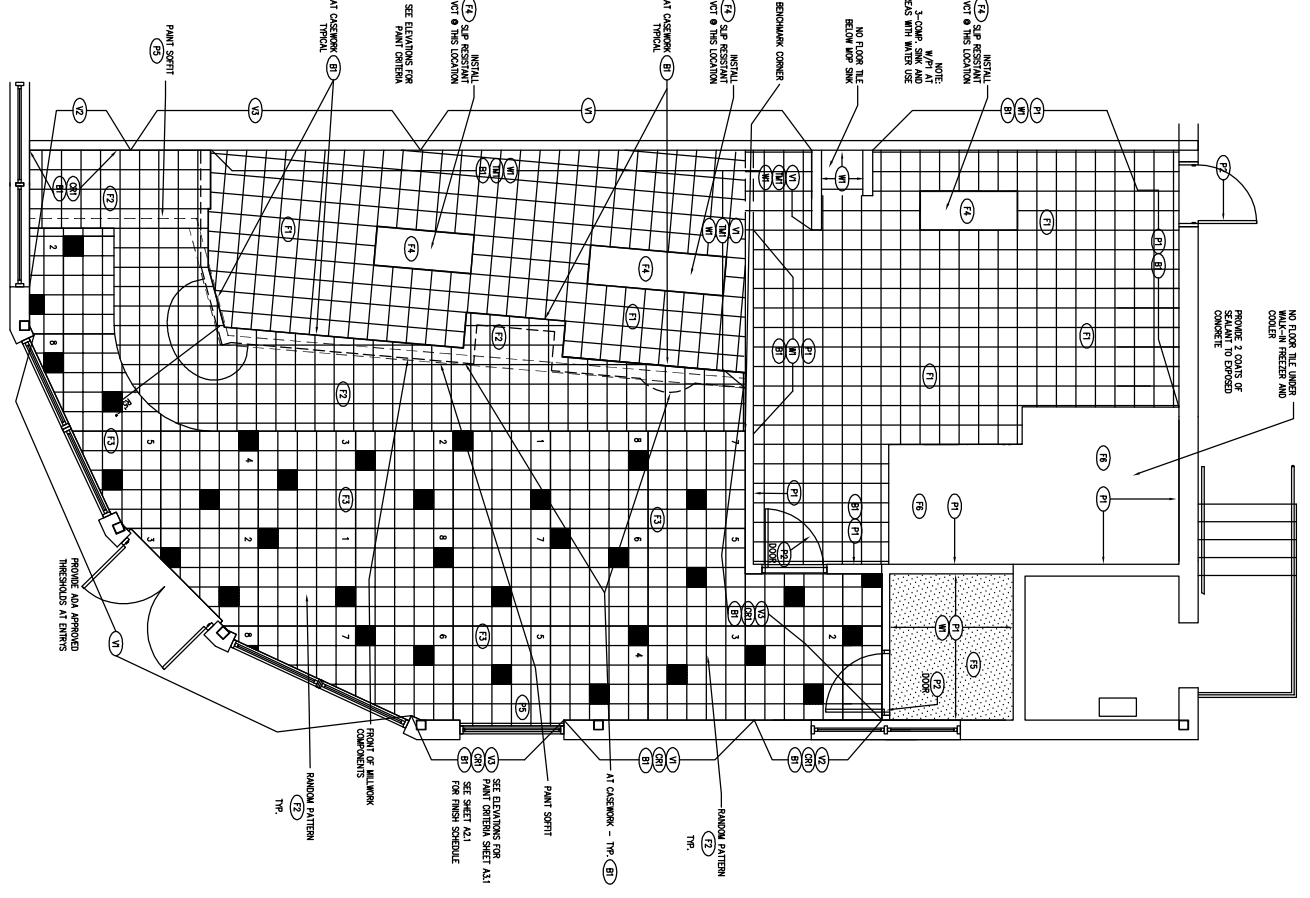
NOTES:
 NO COOLING UNIT ABOVE WALK-IN FREEZER & COOLER
 FREEZER HEIGHT IS 8'-6" A.F.F. (SEE SHEET ME-6757-1) TO BE A MINIMUM OF 1'-0" ABOVE THE CEILING FINISH LINE.
 COOLER HEIGHT IS 8'-0" A.F.F. (SEE SHEET ME-6757-1) TO BE A MINIMUM OF 1'-0" ABOVE THE CEILING FINISH LINE.
 RETURN DUCT TO TOP OF BOARDS
 RETURN DUCT WITH 18" DIA. TO MATCH IN PLACE. CALL OUTLINE TO FREEZER & COOLER MANUFACTURER QUOTE REMOVE ASSOCIATE VENTILATION PROVISIONS.



SYMBOL LEGEND

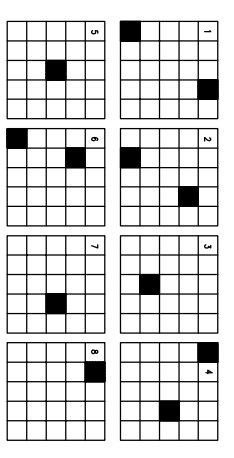
A	NOT USED	EXHAUST FAN
B	TRUCK FRONT (MOUNT 30" FROM WALL)	SPRINKLER
C	TRUCK FRONT (MOUNT 30" FROM WALL)	EXHAUST DUCT
D	TRUCK FRONT (MOUNT 30" FROM WALL)	RETURN AIR GRILLE 24"x24"
E	NOT USED	SPRINKLER 12"x12"
F	ENTRANCE LIGHT	
G	ENTRANCE LIGHT	
H	ENTRANCE LIGHT	
I	ENTRANCE LIGHT	

NOTES:
 1. SET INTERIOR ELEVATIONS FOR EXTERIOR AND ADDITIONAL WALL FINISHES.



LIGHT FIXTURE SCHEDULE

MARK	MANUFACTURER	MODEL NO.	LAMP	VOLT	VOLT-AMPS	REMARKS
A	NOT USED					
B	GENERAL ELECTRIC	W800 SPOUT C	W800 SPOUT C	120	50	
C	GENERAL ELECTRIC	W800 SPOUT C	W800 SPOUT C	120	50	NOTHING TO BE DONE AT 4'-0" AFF
D	GENERAL ELECTRIC	W800 SPOUT C	W800 SPOUT C	120	50	NOTHING TO BE DONE AT 4'-0" AFF
E	NOT USED					
F	GENERAL ELECTRIC	W800 SPOUT C	W800 SPOUT C	120	50	
G	GENERAL ELECTRIC	W800 SPOUT C	W800 SPOUT C	120	50	
H	GENERAL ELECTRIC	W800 SPOUT C	W800 SPOUT C	120	50	
I	GENERAL ELECTRIC	W800 SPOUT C	W800 SPOUT C	120	50	





location: Q2002B

**Quiznos
Sub**
RETAIL CENTER
PINE TREE
SHOPPING CENTER
1030 Brighton Avenue
Portland, ME 04102

store no. 6757



FOR
CONSTRUCTION

project no. 6757
date 1-18-06
file ME-6757-Pine Tree

SCHEDULES,
WALL TYPES,
RESTROOM
ELEVATIONS

sheet designation:
A2.1

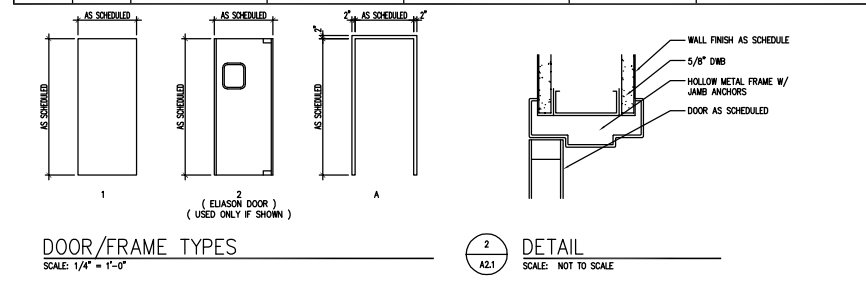
MARK	ITEM	MANUFACTURER	MODEL NO	REMARKS
B1	RUBBER WALL BASE	ESTRE	COLOR: BLACK ADHESIVE: SIZE: 6" COVE BASE, 120' PER ROLL	DINING ROOM, SERVICE AREA & BACKROOM
C1	CEILING PANEL (ATC) CLEANABLE SURFACE	USG INTERIORS	STYLE: VINYL FACES, SHEETROCK BRAND COLOR: WHITE SIZE: 24"x48"	BACKROOM & RESTROOMS SUSPENSION GRID: USG PRELUDE, SIZE 15/16", COLOR: WHITE
C2	CEILING PANEL CLEANABLE SURFACE	KEMUTE	STYLE: FRP COLOR: DUSTY DOVE GRAY SMOOTH MATTE SIZE: 24"x24"	SERVICE AREA SUSPENSION GRID: USG PRELUDE, SIZE 15/16", COLOR: P3
C3	CEILING PANEL (ATC)	USG INTERIORS	STYLE: RADAR SQUARE EDGE COLOR: 6203 TETON BLUE (PREFINISHED BY USG) SIZE: 24" x 48"	DINING ROOM SUSPENSION GRID: USG PRELUDE, SIZE 15/16", COLOR: P4
CR1	CHAIR RAIL	PREMIER EUROWOOD	COLOR: PEARWOOD STAIN	SEE DETAIL 5/A4.1
F1	VCT	AZROCK	MODEL NO: VL124 COLOR: CLASSIC TAN SIZE: 12' X 12'	SERVICE AREA & BACKROOM
F2	VCT	AZROCK	MODEL NO: T0220 COLOR: DUSTY GREEN SIZE: 12' X 12'	DINING ROOM, RANDOM PATTERN COLOR
F3	VCT	AZROCK	MODEL NO: S1036 COLOR: COPPER SIZE: 12' X 12'	DINING ROOM & CORRIDOR
F4	VCT	AZROCK	MODEL NO: SR124 - SLIP RESISTANT COLOR: CLASSIC TAN SIZE: 12' X 12'	AREA IN FRONT OF SANDWICH TABLES & 3-COMP SINK
F5	COMMERCIAL SHEET VINYL	AZROCK	MODEL NO: 82027R COLOR: SMOKEY GREY SIZE: 6' X 27' ROLL	RESTROOMS
F6	CONCRETE SEALER	-	-	2 COATS
P1	PAINT	BENJAMIN MOORE	COLOR #165, 276 2B MOORCRAFT SUPER SPEC LATEX SEMI-GLOSS ENAMEL (GLOWING APRICOT)	BACKROOM & RESTROOMS
P2	PAINT	BENJAMIN MOORE	COLOR #2129-10, 276 4B MOORCRAFT SUPER SPEC LATEX - SEMI GLOSS ENAMEL (MIDNIGHT DREAM)	MEN'S DOOR, WOMEN'S DOOR, BACKROOM DOOR
P3	PAINT	BENJAMIN MOORE	COLOR BRILLIANT METALLIC, 164 78 WEATHERPROOF ALUMINUM PAINT METAL AND WOOD FINISHES (GREY METALLIC)	SERVICE AREA CEILING GRID
P4	PAINT	BENJAMIN MOORE	COLOR OY 13,25, BB 3K2, MA 3, OG 2324,25, 363 36 ION CLAD, LOW LUSTRE METAL AND WOOD ENAMEL (TETON BLUE)	USE FOR DIFFUSERS/RILLES AND DINING ROOM TOUCH-UP
P5	PAINT	BENJAMIN MOORE	NAVAJO WHITE INT. RM.	USE FOR 6" X 6" SOFFIT SEPARATING PREP AND DINING RM.
TM1	TRANSITION MOLDING	PREMIER EUROWOOD	COLOR: PEARWOOD STAIN	SIZE 1 1/2"x3/4"x8'-0"
V1	VINYL WALL COVERING	Q421-60	COLOR - YELLOW SUNSPOT (YELLOW) BOLT: 54" WIDE, 12 YARDS	REFLECTIVITY 70%
V2	VINYL WALL COVERING	Q421-80	COLOR - KEEPING WILLOW (GREEN) BOLT: 54" WIDE, 12 YARDS	REFLECTIVITY 45%
V3	VINYL WALL COVERING	Q421-70	COLOR - BLUE MOON (BLUE) BOLT: 54" WIDE, 12 YARDS	REFLECTIVITY 51%
W1	FRP PANEL	KEMUTE	S-1036 WHITE COLOR: WHITE SIZE: 4'x10' SHEETS - SMOOTH MATT FINISH	BACKROOM GC TO SUPPLY MATCHING HEAVY DUTY CORNER GUARDS

NOTES:
1. ALL MATERIALS FOR FLOOR INSTALLATION ARE SUPPLIED BY OWNER (ORDERED THROUGH SOURCE ONE DISTRIBUTION AS PART OF THE CONSTRUCTION MATERIAL SHIPMENT). ALL SHEET VINYL SUPPLIED BY OWNER (ORDERED THROUGH SOURCE ONE DISTRIBUTION AS PART OF THE CONSTRUCTION MATERIAL SHIPMENT).
2. COLD WELD SHEET VINYL SEAMS.

DOOR SCHEDULE										REMARKS		
MARK	TYPE	MATL	SIZE	THK	FIN	FRAME TYPE	MATL	FIN	HEAD	JAMB	HARDWARE SET	
100	EXG	EXG	EXG	EXG	EXG	EXG	EXG	EXG	EXG	EXG	C	NOTES 1, 2 AND 6
101	2	AL	3'-0" x 6'-8"	.063"	EXG	A	HM	P2	2/AZ.1	2/AZ.1	A	ELIASON DOOR - NOTES 3, 4, & 5
102	1	SCW	3'-0" x 7'-0"	1 3/4"	P2	A	HM	P2	1/AZ.1	1/AZ.1	B	NOTE 6
102A	EXG	EXG	EXG	EXG	EXG	EXG	EXG	EXG	EXG	EXG	EXG	NOTE 6
103	1	SCW	3'-0" x 7'-0"	1 3/4"	P2	A	HM	P2	1/AZ.1	1/AZ.1	A	NOTE 7
104	1	SCW	3'-0" x 7'-0"	1 3/4"	P2	A	HM	P2	1/AZ.1	1/AZ.1	A	NOTE 7

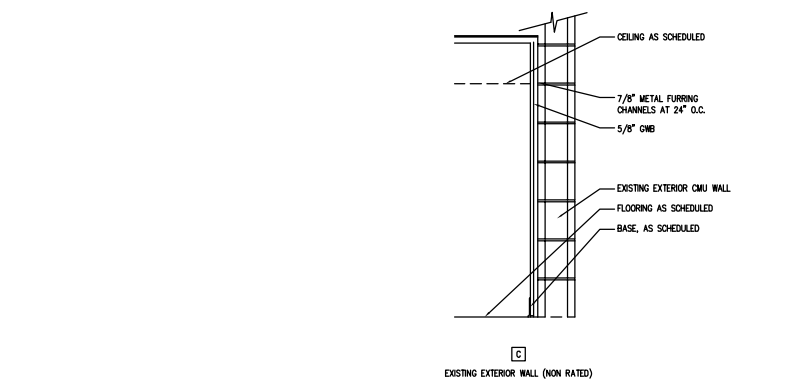
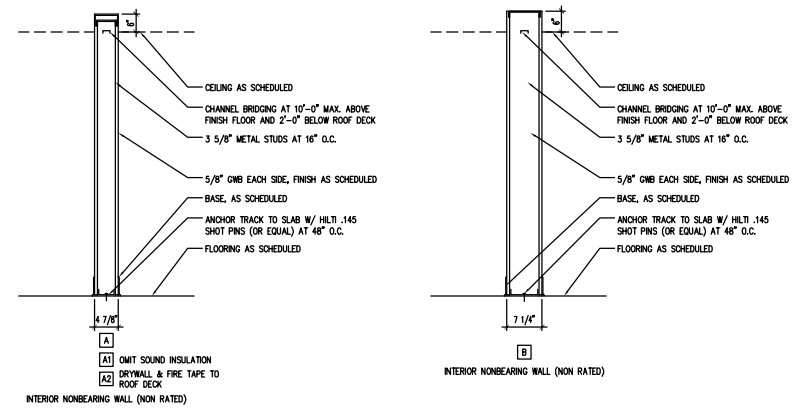
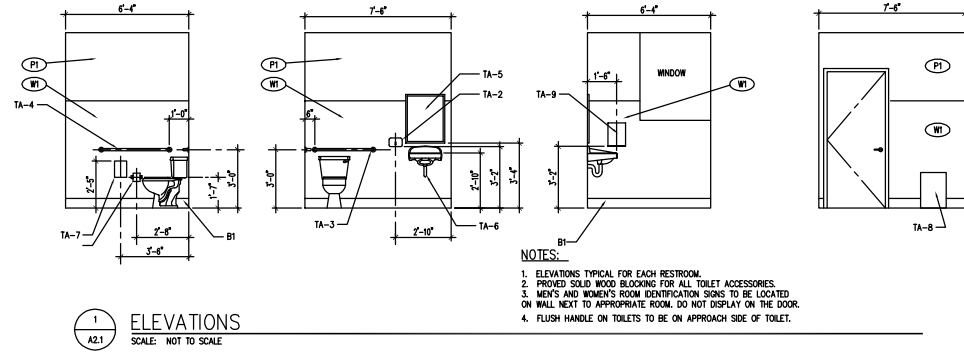
DOOR/FRAME SCHEDULE NOTES: (NOTE: ELIASON DOOR INFORMATION TO BE USED ONLY IF AN ELIASON DOOR IS SHOWN).
1. DOOR TO HAVE A SIGN THAT READS "DOOR TO REMAIN UNLOCKED DURING REGULAR BUSINESS HOURS".
2. EXISTING DOOR AND FRAME TO MATCH EXISTING STOREFRONT CONFIGURATION, COLOR AND FINISH.
3. ELIASON DOOR - DOOR IS NOT SUPPLIED WITH FRAME. PROVIDE HOLLOW METAL FRAME WITH NO STOPS.
4. ELIASON LMP 6 EASY SWING DOUBLE ACTION DOOR WITH 14"x16" CLEAR VINYL WINDOW, COLOR DARK BROWN.
5. ELIASON EASY SWING DOOR PROVIDED BY NATIONAL RESTAURANT SUPPLY. FOR MORE INFO VISIT WWW.ELIASONCORP.COM
6. EXISTING HARDWARE TO REMAIN. VERIFY WITH OWNER ANY ADDITIONAL HARDWARE REQUIRED.
7. UNDERCUT RESTROOM DOORS 3/4".

MARK	QTY	ITEM	MANUFACTURER	MODEL NO	FINISH	REMARKS
A	1 1/2"	PR BUTT HINGES	MCKINNEY	TA2731 3 1/2" x 3 1/2"	US260	
	1	LOOKSET CLOSER	SCHLAGE	1300N S510P	626 SATIN CHROMIUM PLATED	
	2	KICK/MSIP PLATE	ROCKWOOD	1230 SERIES	US260	
	1	WALL STOP	CLYNN JOHNSON	10"x34" .125	US260	
	1	DOOR SILENCER	CLYNN JOHNSON	WB1	US260	
B	1 1/2"	PR BUTT HINGES	MCKINNEY	TA2731 3 1/2" x 3 1/2"	US260	
	1	PUSH PLATE	HANATHA	2202X	US260	
	1	DOOR PULL	HANATHA	2202X 5/P	US260	
	1	CLOSER	SARGENT	1230 SERIES	US260	
	2	KICK/MSIP PLATE	ROCKWOOD	10"x34" .125	US260	
	1	WALL STOP	CLYNN JOHNSON	WB1	US260	
	1	DOOR SILENCER	CLYNN JOHNSON	GJ64	US260	
C	1	CONTROL LOCK THRESHOLD	DETTEX	ECL-2300 W/ ECL-449K CYLINDER	US260	PROVIDE ADA COMPLIANT THRESHOLD



ROOM FINISH SCHEDULE										
MARK	ROOM	WALLS				CEILING		FLOOR	BASE	REMARKS
		N	S	E	W	MATL	HEIGHT			
100	DINING	CRV3	CRV1	V2/V3	DR1/V1/V2/V3	C2/C3	10'-0"	F2/F3	B1	SEE A1.3 AND A3.1
101	SERVICE	TM1/V1/W1					10'-0"	F1	B1	SEE A1.3 AND A3.1
102	BACKROOM	P1	P1/W1	P1/W1	P1	C1	10'-0"	F1	B1	SEE A1.3 AND A3.1
103	MEN	P1/W1	P1/W1	P1/W1	P1/W1	C1	8'-10"	F1	B1	SEE 1/A2.1
104	WOMEN	P1/W1	P1/W1	P1/W1	P1/W1	C1	8'-10"	F1	B1	SEE 1/A2.1

TOILET ACCESSORIES TA-X					
MARK	QTY	ITEM	MANUFACTURER	MODEL NO	REMARKS
TA-1	4	TOILET PAPER DISPENSER	SMART	S5T	SUPPLIED BY SOURCE ONE DISTRIBUTION
TA-2	4	SOAP DISPENSER	AMERICAN SPECIALTIES INC.	Q342	SUPPLIED BY G.C.
TA-3	2	GRAB BAR	BOBRICK	B-6806X36	SUPPLIED BY SOURCE ONE DISTRIBUTION
TA-4	2	GRAB BAR	BOBRICK	B-6806X42	SUPPLIED BY SOURCE ONE DISTRIBUTION
TA-5	2	MIRROR	BOBRICK	B-165 2430 SERIES	SUPPLIED BY SOURCE ONE DISTRIBUTION
TA-6	2	PROTECTIVE PLUMBING COVERS	TRUBRO LAV-GUARD	103 WHITE	SUPPLIED BY G.C.
TA-7	1	SANITARY NAPKIN DISPOSAL	AMERICAN SPECIALTIES INC.	0852	SUPPLIED BY G.C., WOMEN'S RESTROOM ONLY
TA-8	2	WASTE RECEPTACLE	AMERICAN SPECIALTIES INC.	0825	SUPPLIED BY G.C., WOMEN'S RESTROOM ONLY
TA-9	2	PAPER TOWEL DISPENSER	SMART	B4T	SUPPLIED BY SOURCE ONE DISTRIBUTION





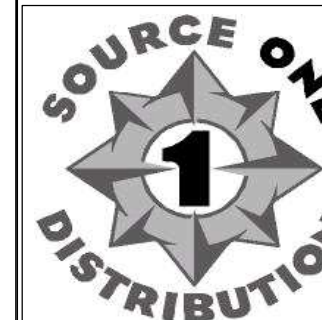
location: Q2002B

Quiznos Sub

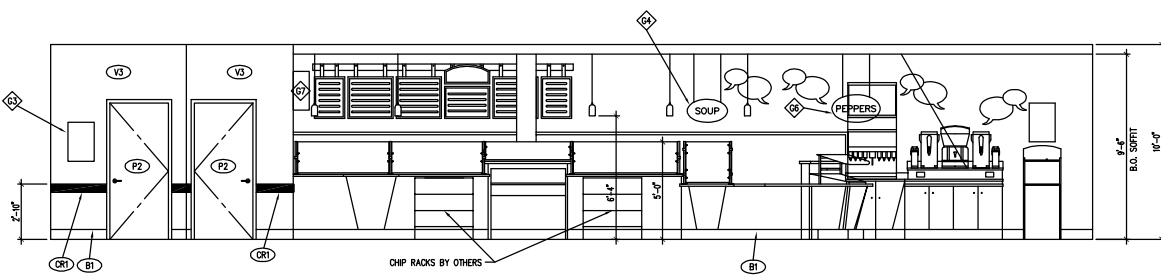
RETAIL CENTER

Pine Tree Shopping Center
1030 Congress Street
Portland, ME 04102

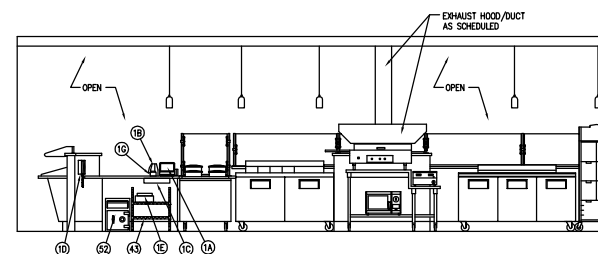
store no. 6757



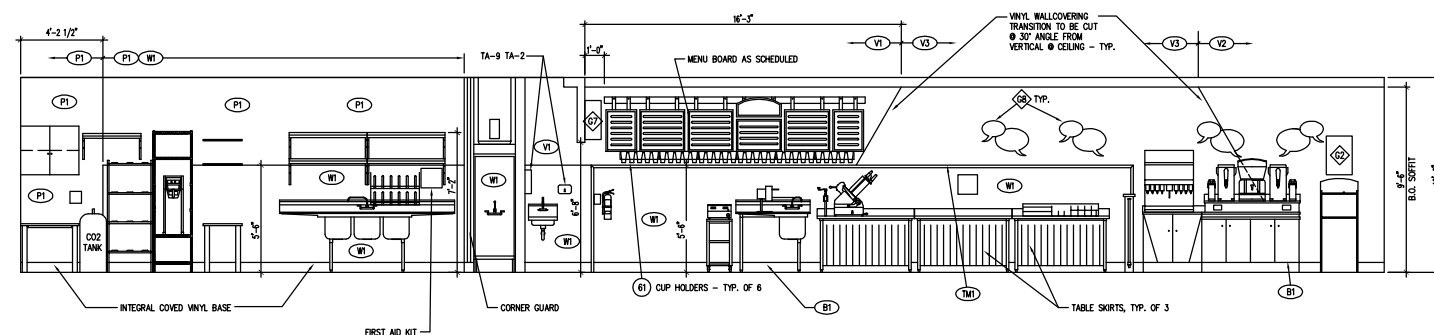
architect:



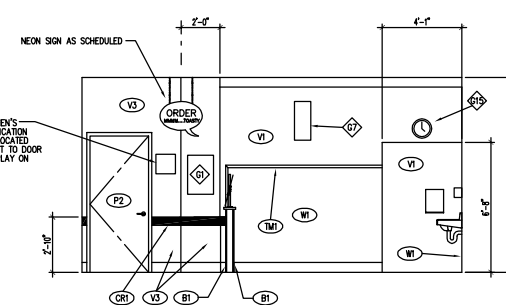
1 INTERIOR ELEVATION (TYPICAL)
SCALE: 1/4"=1'-0"



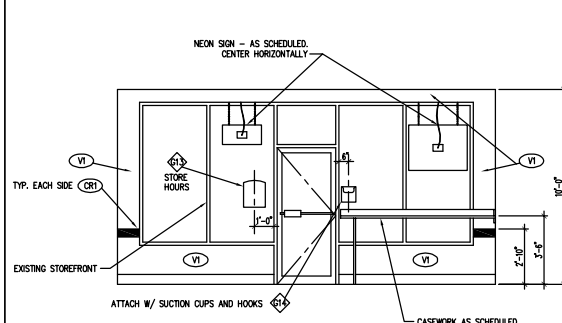
2 INTERIOR ELEVATION (TYPICAL)
SCALE: 1/4"=1'-0"



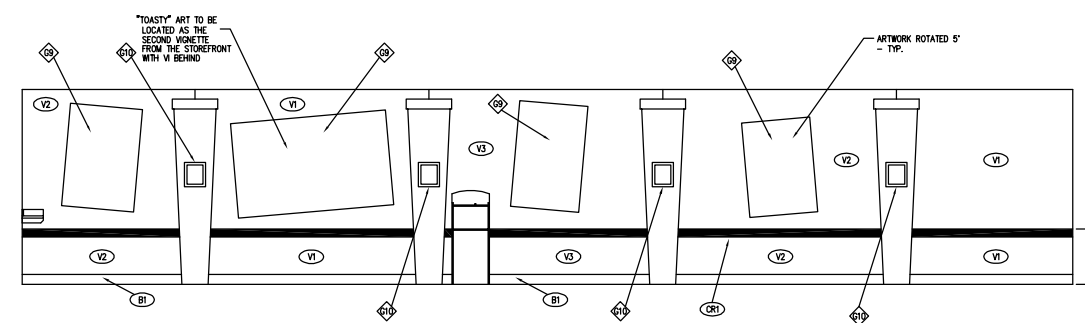
3 INTERIOR ELEVATION (TYPICAL)
SCALE: 1/4"=1'-0"



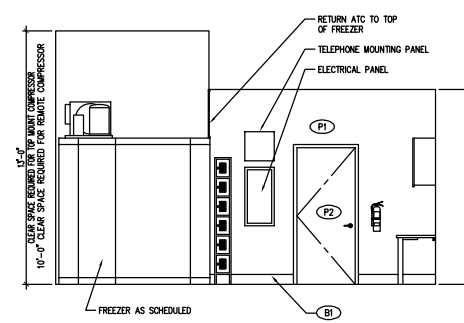
4 INTERIOR ELEVATION (TYPICAL)
SCALE: 1/4"=1'-0"



5 INTERIOR ELEVATION (TYPICAL)
SCALE: 1/4"=1'-0"



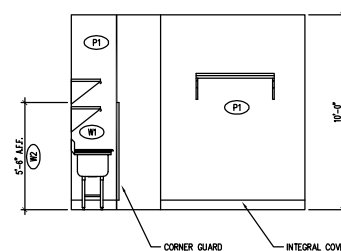
6 INTERIOR ELEVATION (TYPICAL)
SCALE: 1/4"=1'-0"



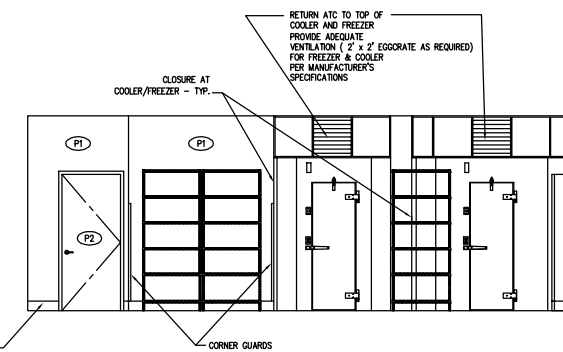
7 INTERIOR ELEVATION (TYPICAL)
SCALE: 1/4"=1'-0"

WALLCOVERING/POSTER INFORMATION

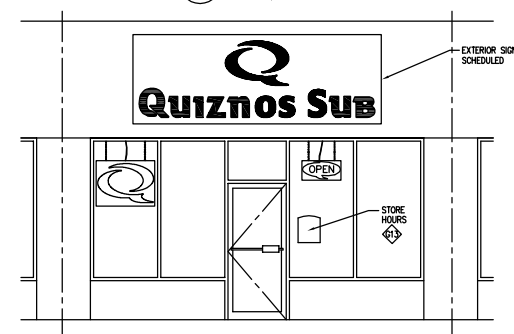
- V1 COLOR - YELLOW SUNSPOT (YELLOW)
"TOASTY" POSTER
- V2 COLOR - WEEPING WILLOW (GREEN)
"SALAD" POSTER
"FANTASTICO" POSTER
- V3 COLOR - BLUE MOON (BLUE)
"PRIMO DELI MEATS" POSTER



8 INTERIOR ELEVATION (TYPICAL)
SCALE: 1/4"=1'-0"



9 INTERIOR ELEVATION (TYPICAL)
SCALE: 1/4"=1'-0"



10 INTERIOR ELEVATION (TYPICAL)
SCALE: 1/4"=1'-0"

FOR CONSTRUCTION

project no. 6757
date 1-18-06
file ME-6757-Pine Tree
sheet title

INTERIOR ELEVATIONS

sheet designation:

A3.1



location:
**Quiznos
 SUB**
 RETAIL CENTER
 Pine Tree
 Shopping Center
 1030 Brighton avenue
 Portland, ME 04102
 store no. 6757



FOR
 CONSTRUCTION

project no. 6757
 date 1-18-06
 file ME-6757-Pine Tree
 sheet title

DETAILS

A4.1

TYPE II HOOD SCHEDULE					
Item	length	width	exhaust cfm	exhaust duct size	exhaust static pressure
Hood and Exhaust Fan	54"	21.25"	800	10 X 10	.50

Johnson Diversified Products
 1408 Northland Dr. #406
 Mendota Heights, IL 60130
 contact: Paul Johnson
 800.676.8488 ext.111

KOLPAK FREEZER WORKSHEET

FRANCHISEE _____

STORE #: _____

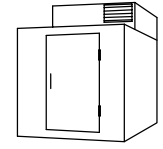
SHIPPING ADDRESS: _____

CITY, STATE, ZIP: _____

PHONE: _____

FAX: _____

EMAIL: _____



The primary purpose for this worksheet is to determine if the store location indicated above can use the standard 9'-6" tall Polar Pak walk-in freezer configuration. You will need to physically measure the ceiling height where the walk-ins will be located. PLEASE TAKE INTO CONSIDERATION ALL MECHANICAL DUCTWORK, BEAMS, PLUMBING, ELECTRICAL AND SPRINKLER SYSTEMS. On 9'-6" high walk-ins, 13'-0" of clearance is required (unless remote system is used - see below). For a pre-assembled remote walk-in, a floor drain or condensate evaporator is required. For a Polar Pak walk-in, a floor drain or condensate evaporator is not required.

It is imperative that the minimum ceiling height is free from all pipes, beams, ducts, etc. Any miscalculations will result in a unit that will not fit properly. Failure to measure the ceiling accurately, will result in additional costs and time delays.

THIS WORKSHEET MUST BE COMPLETED BEFORE SENDING THE CONSTRUCTION DOCUMENTS TO QUIZNOS DESIGN AND CONSTRUCTION DEPARTMENT. YOUR PLANS WILL NOT BE COMPLETED AND AN EQUIPMENT ORDER WILL NOT BE GENERATED WITHOUT THIS WORKSHEET BEING CORRECTLY COMPLETED.

Questions:
 What is the maximum, UNOBSTRUCTED ceiling height at the walk-in location? _____
 What size Freezer will fit the above location (CIRCLE ONLY ONE) 9'-6" 7'-6"
 What type of compressor do you require (CIRCLE ONLY ONE) TOP MOUNT REMOTE

PROVIDE THE INFORMATION BELOW, FOR THE COMPRESSOR TYPE INDICATED ABOVE - ONLY.

TOP MOUNT COMPRESSOR
 YES NO Do you have 13'-0" clearance from floor to ceiling above the footprint of the freezer to fit the top mount compressor?
 YES NO Added 3 amps will fit into the current electrical panel?

REMOTE COMPRESSOR
 YES NO Do you have 10'-0" clearance from floor to ceiling around the freezer footprint?
 YES NO Added 3 amps will fit into the current electrical panel?

Architect's Signature / Date _____
 Print Name _____ Phone _____ Fax _____

NOTE:
 THE AREA DIRECTOR/FRANCHISEE MUST SPECIFY THE COMPRESSOR TYPE FOR THE COOLER AND FREEZER (KOLPAK WORKSHEET). TOP MOUNT IS THE STANDARD AND WILL BE ORDERED UNLESS OTHERWISE SPECIFIED. (VIA KOLPAK WORKSHEET). THE STANDARD FREEZER HEIGHT IS 9'-6" & WILL BE ORDERED UNLESS OTHERWISE SPECIFIED (VIA KOLPAK WORKSHEET). A CEILING HEIGHT OF 13'-0" MIN. CLEAR CEILING HEIGHT IS REQUIRED FOR TOP MOUNT COMPRESSORS. A CEILING HEIGHT OF 10'-0" MIN. CLEAR CEILING HEIGHT IS REQUIRED FOR REMOTE COMPRESSORS.

