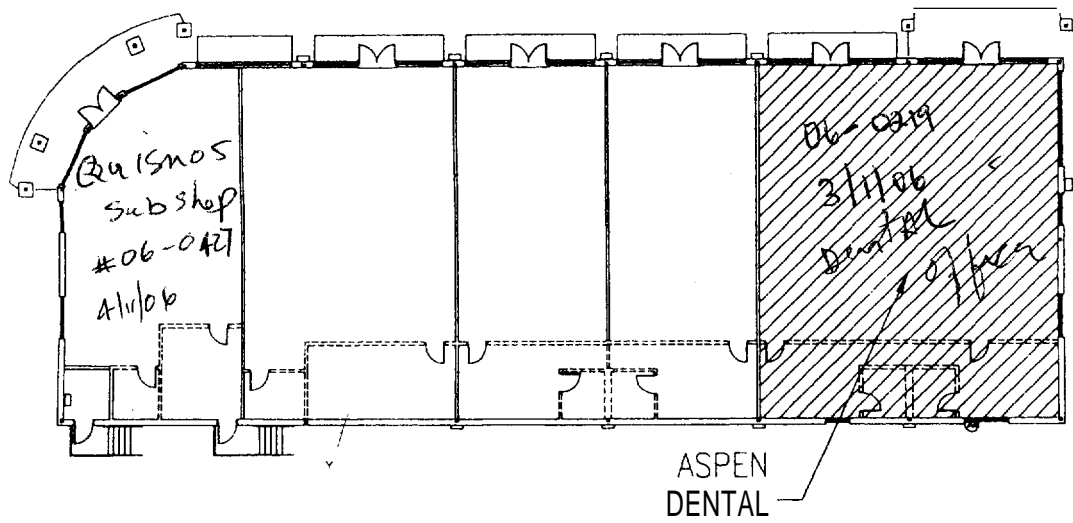


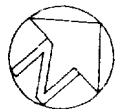
"Lowels Plaza"

Brighton Ave



Building 'A'

LOCATION PLAN



Level 1st

- 1 COVER SHEET
- 2 PARTITION PLAN
- 3 ~~REFLECTED~~ CEILING PLAN
- 4 FUTURE LAYOUT
- 5 DETAILS

REVISIONS: 

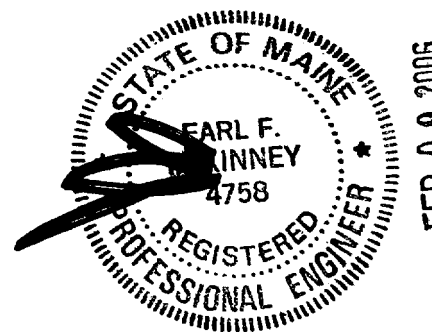
 FEBRUARY 2006

JOB NO.: 0602



**A & E DESIGNERS, INC.**

615 Delzan Place Suite #100  
 Lexington, Kentucky 40503  
 PHONE: (859) 223-1000  
 FAX (859) 223-1657  
 EMAIL derrick@aedesigners.net  
 WEBSITE www.aedesigners.net



tlondME.DWG







location: Q2002B

# Quiznos SUB

## RETAIL CENTER

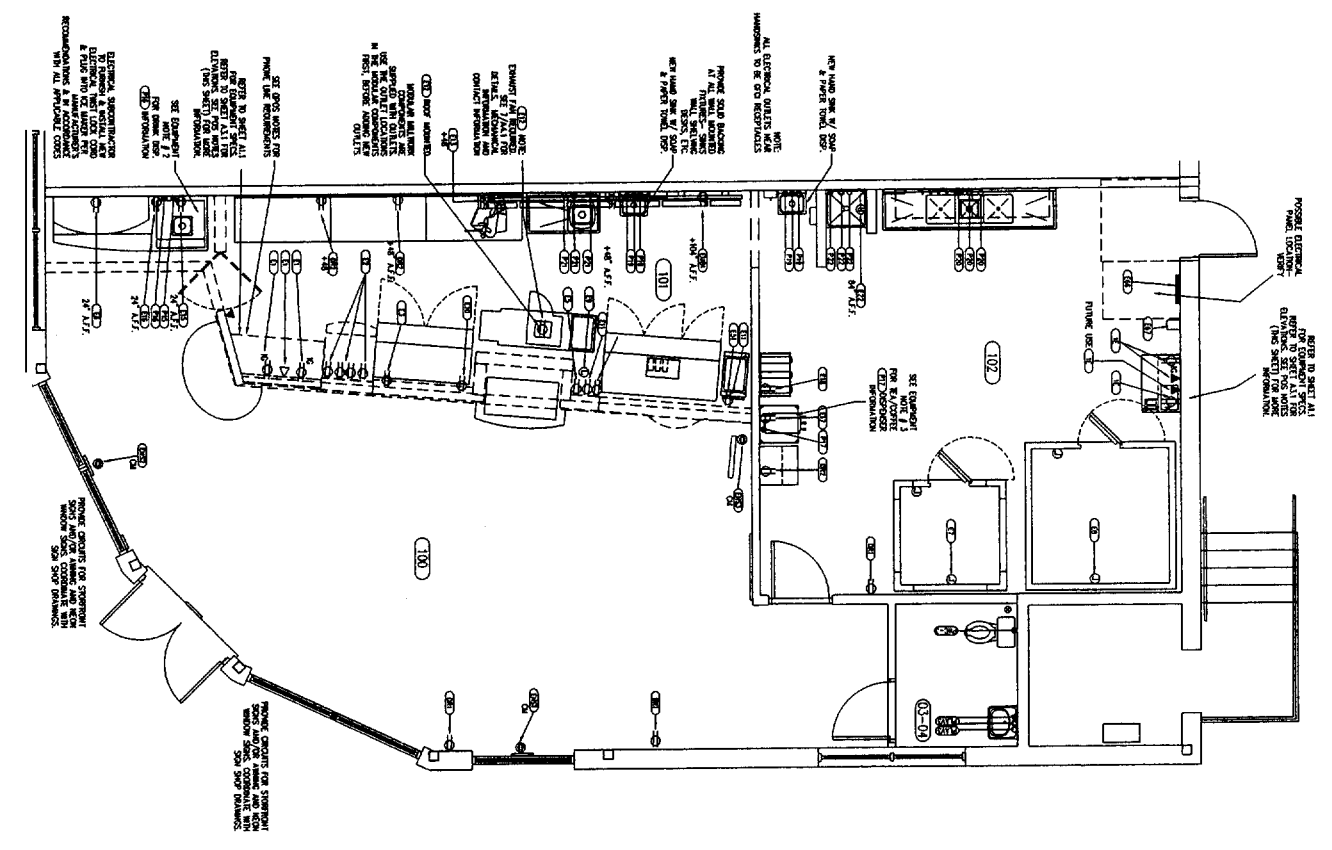
Pine Tree Shopping Center  
1030 Brighton Avenue  
Portland, Me. 04102

store no. STORE NUMBER  
6757

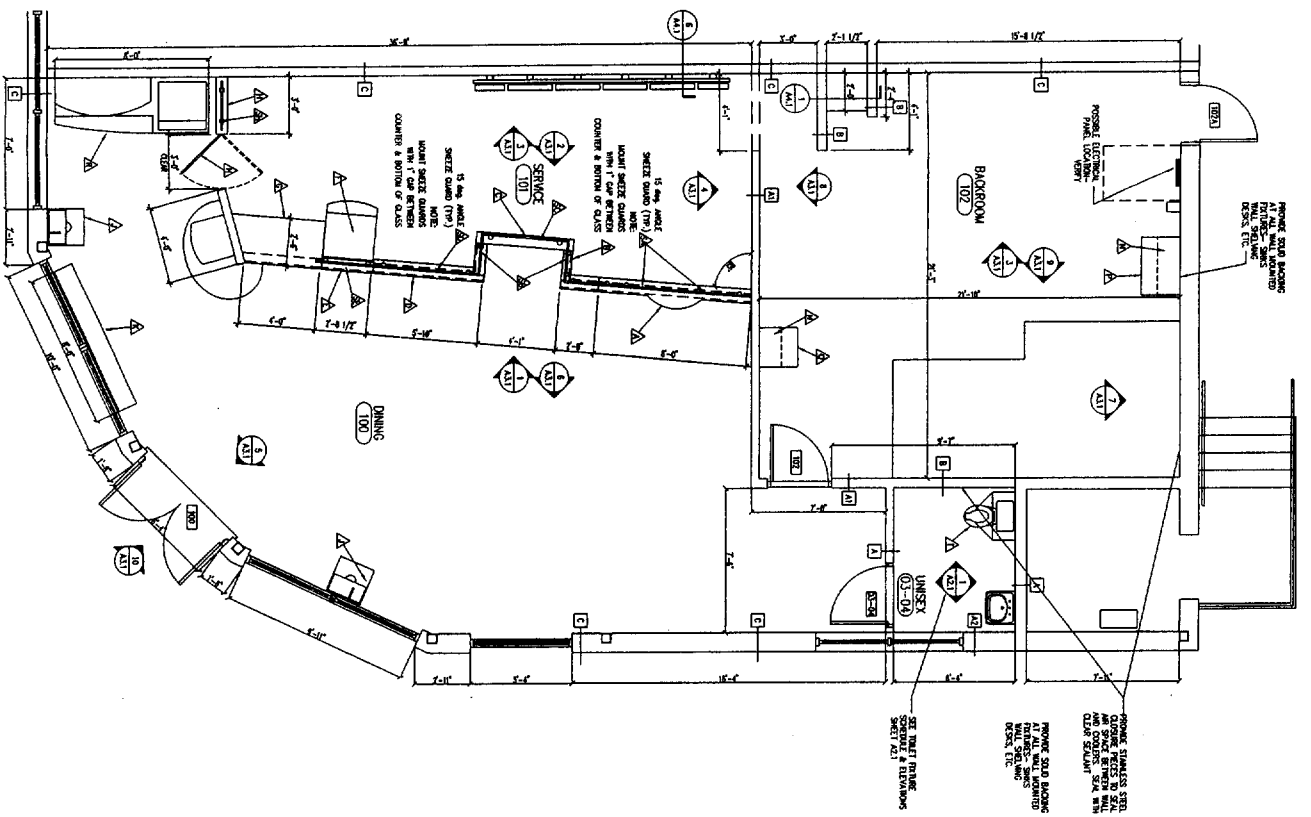
### FOR CONSTRUCTION

project no. 6757  
date 1-18-06  
file ME-6757-Pine Tree  
sheet 006

POWER/PLUMBING PLANS  
sheet designator:  
**A1.2 A**

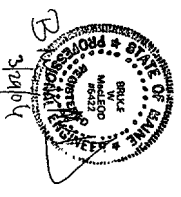


POWER AND PLUMBING PLAN  
SCALE: 1/4" = 1'-0"  
NORTH



FLOOR PLAN  
SCALE: 1/4" = 1'-0"  
NORTH

SCHEDULES ON SHEET A1-2B



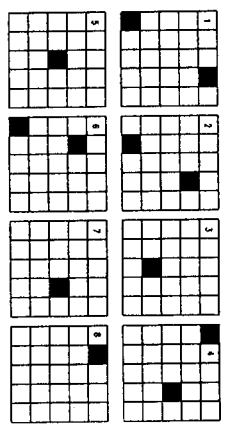
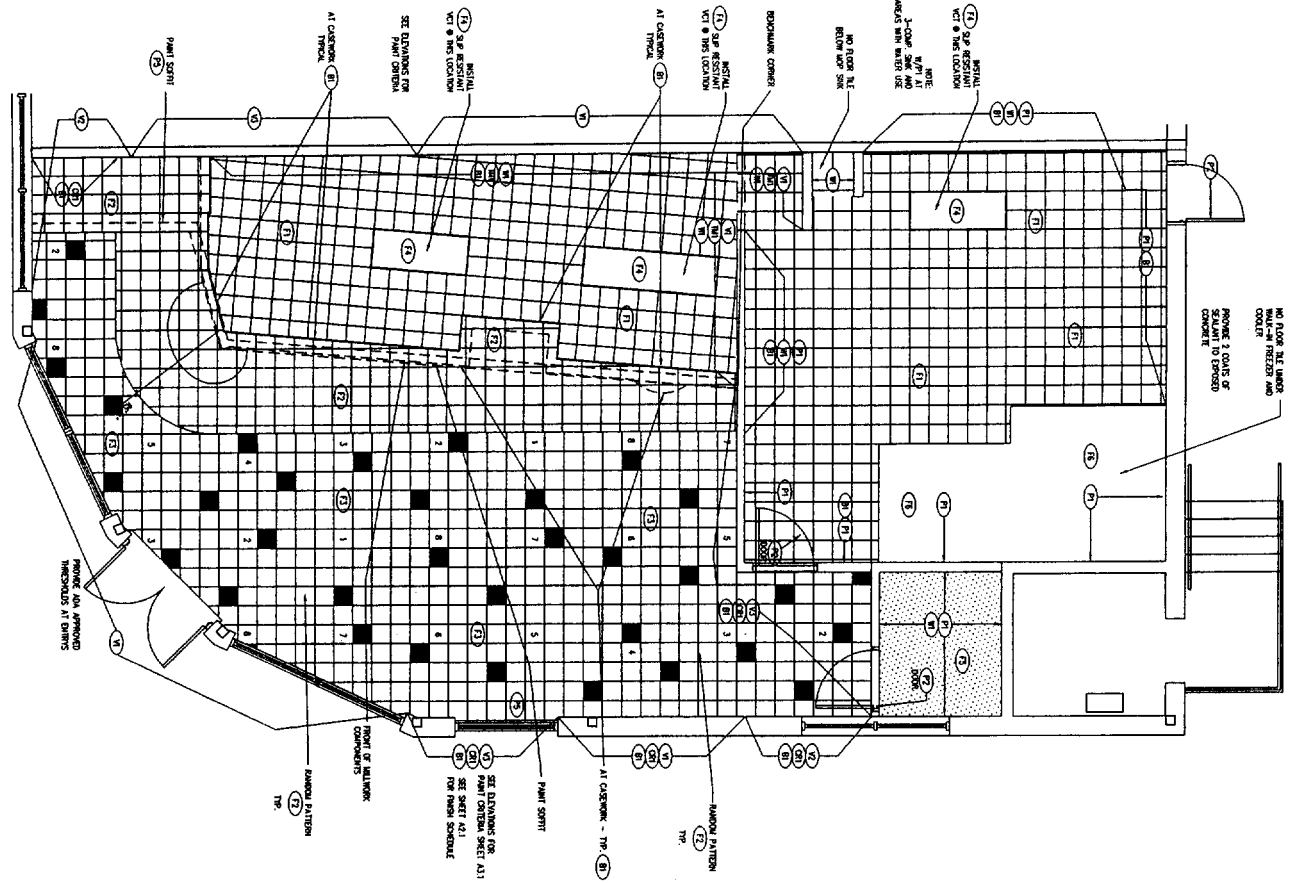
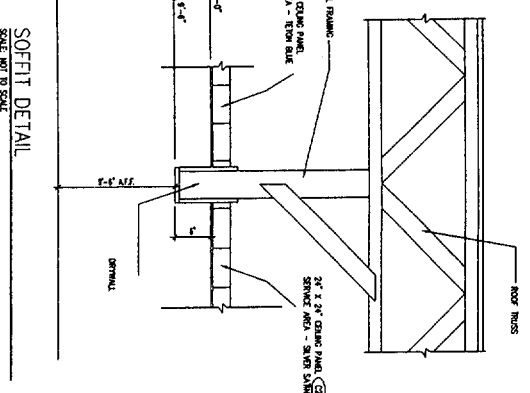
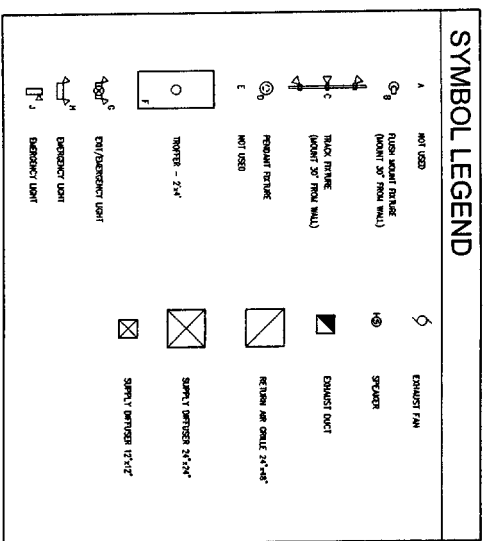
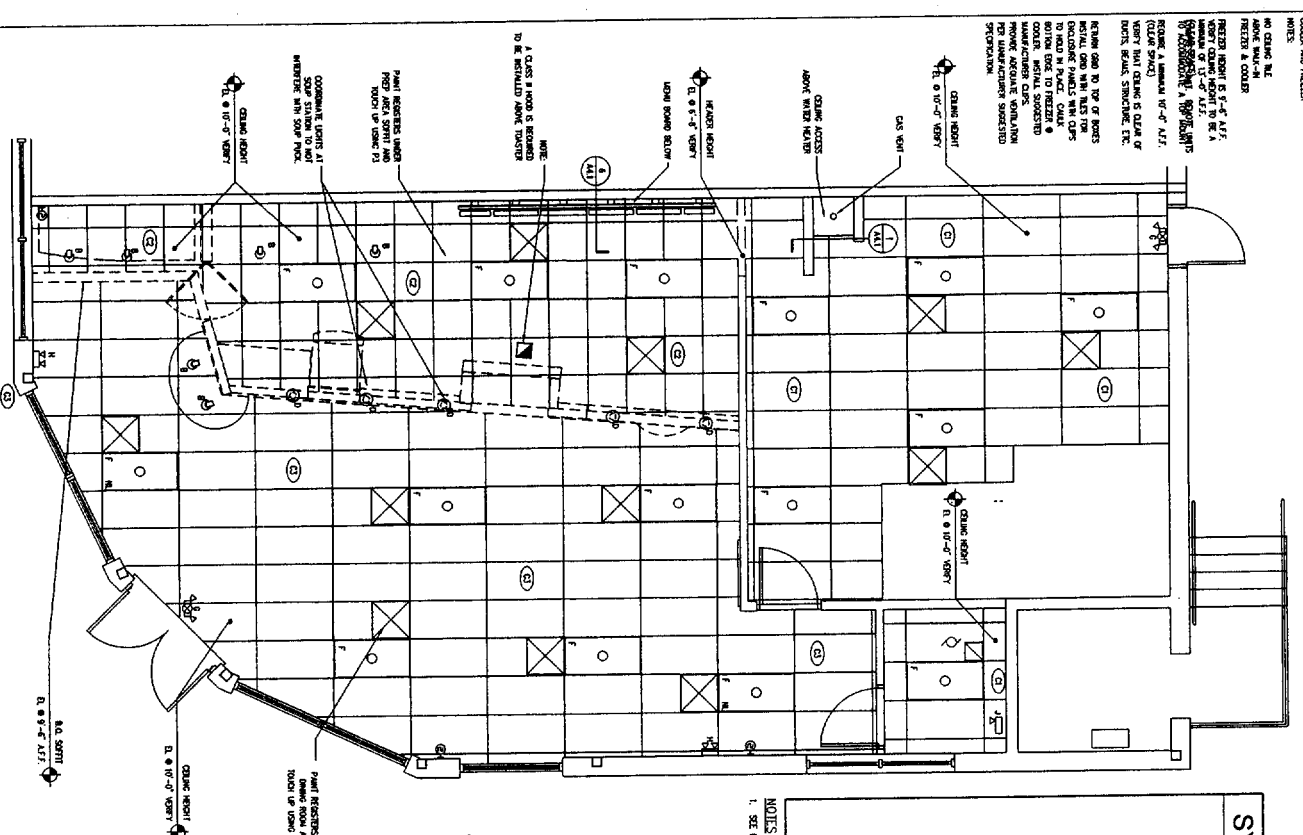




location: CQ2002B  
**Quiznos**  
**SUB**  
 RETAIL CENTER  
 Pine Tree  
 Shopping Center  
 1030 Brighton Avenue  
 Portland, Me. 04102  
 store no. STORE NUMBER  
 6757

FOR  
 CONSTRUCTION

project no. 6757  
 date 1-18-06  
 file ME-6757-Pine Tree  
 sheet title  
**CEILING PLAN &  
 FINISH PLAN**  
 sheet designation:  
**A1.3**



**LIGHT FIXTURE SCHEDULE**

MARK	MANUFACTURER	MODEL NO.	LAMP	VOLT.	VOLT-AMPS	REMARKS
A	NOT USED					
B	GENERAL ELECTRIC	WINDY SPOT C	WINDY SPOT C	120	50	
C	GENERAL ELECTRIC	WINDY SPOT D	WINDY SPOT D	120	50	
D	GENERAL ELECTRIC	WINDY SPOT E	WINDY SPOT E	120	50	
E	NOT USED					
F	GENERAL ELECTRIC	WINDY SPOT F	WINDY SPOT F	120	50	
G	GENERAL ELECTRIC	WINDY SPOT G	WINDY SPOT G	120	50	
H	GENERAL ELECTRIC	WINDY SPOT H	WINDY SPOT H	120	50	
I	GENERAL ELECTRIC	WINDY SPOT I	WINDY SPOT I	120	50	
J	GENERAL ELECTRIC	WINDY SPOT J	WINDY SPOT J	120	50	
K	GENERAL ELECTRIC	WINDY SPOT K	WINDY SPOT K	120	50	
L	GENERAL ELECTRIC	WINDY SPOT L	WINDY SPOT L	120	50	
M	GENERAL ELECTRIC	WINDY SPOT M	WINDY SPOT M	120	50	
N	GENERAL ELECTRIC	WINDY SPOT N	WINDY SPOT N	120	50	
O	GENERAL ELECTRIC	WINDY SPOT O	WINDY SPOT O	120	50	
P	GENERAL ELECTRIC	WINDY SPOT P	WINDY SPOT P	120	50	
Q	GENERAL ELECTRIC	WINDY SPOT Q	WINDY SPOT Q	120	50	
R	GENERAL ELECTRIC	WINDY SPOT R	WINDY SPOT R	120	50	
S	GENERAL ELECTRIC	WINDY SPOT S	WINDY SPOT S	120	50	
T	GENERAL ELECTRIC	WINDY SPOT T	WINDY SPOT T	120	50	
U	GENERAL ELECTRIC	WINDY SPOT U	WINDY SPOT U	120	50	
V	GENERAL ELECTRIC	WINDY SPOT V	WINDY SPOT V	120	50	
W	GENERAL ELECTRIC	WINDY SPOT W	WINDY SPOT W	120	50	
X	GENERAL ELECTRIC	WINDY SPOT X	WINDY SPOT X	120	50	
Y	GENERAL ELECTRIC	WINDY SPOT Y	WINDY SPOT Y	120	50	
Z	GENERAL ELECTRIC	WINDY SPOT Z	WINDY SPOT Z	120	50	





02002B

**Quiznos**  
**Sub**  
 RETAIL CENTER  
 Pine Tree  
 Shopping Center  
 1030 Congress Street  
 Portland, ME 04102

draw no. 6757



architect

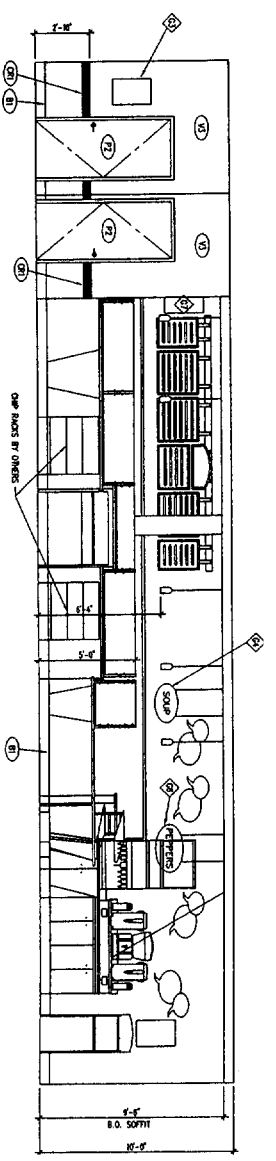
FOR  
 CONSTRUCTION

INTERIOR  
 ELEVATIONS:

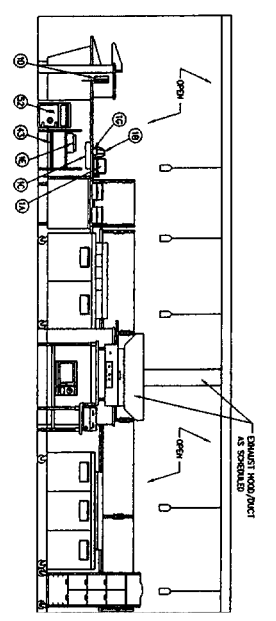
project no. 6757  
 date 1-18-06  
 file ME-6757-Pine Tr  
 sheet title

sheet designation:

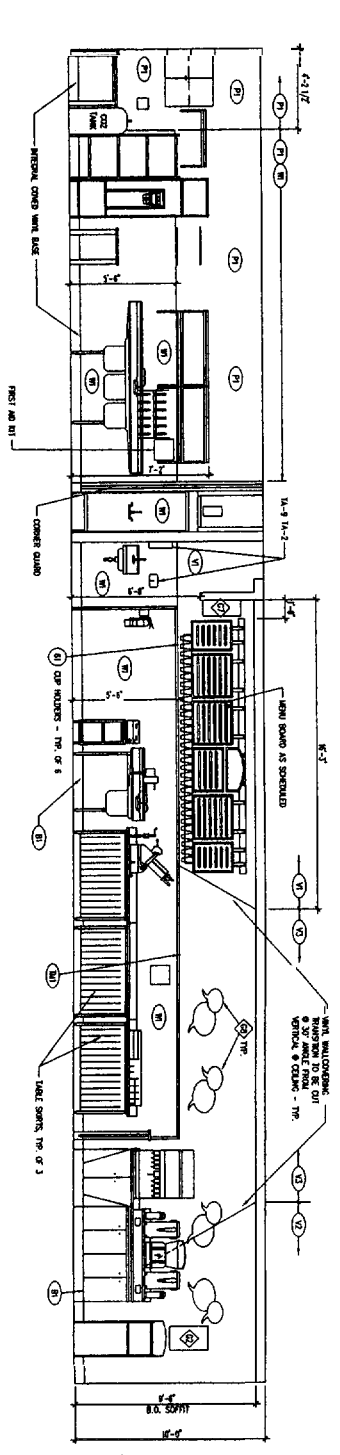
A3 1



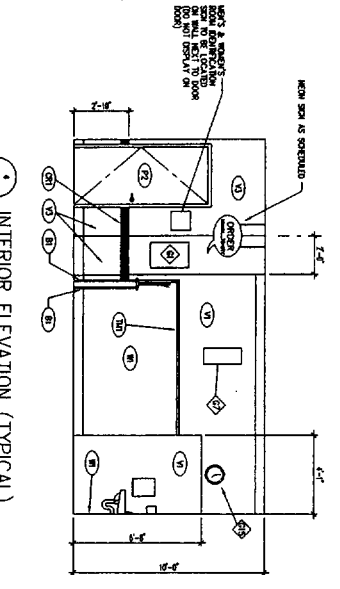
1 INTERIOR ELEVATION (TYPICAL)  
 SCALE: 1/4"=1'-0"



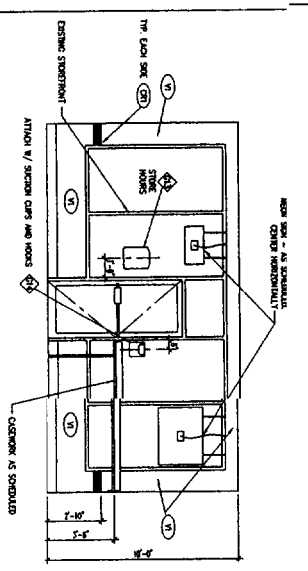
2 INTERIOR ELEVATION (TYPICAL)  
 SCALE: 1/4"=1'-0"



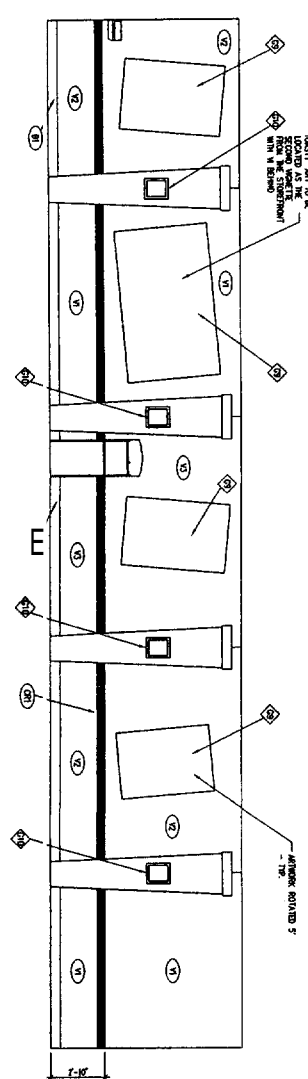
3 INTERIOR ELEVATION (TYPICAL)  
 SCALE: 1/4"=1'-0"



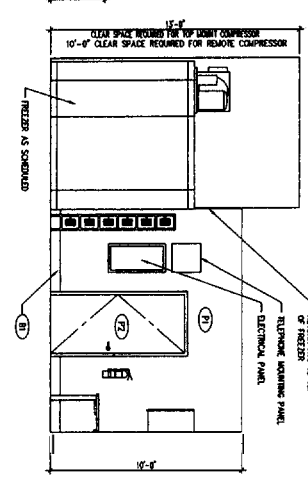
4 INTERIOR ELEVATION (TYPICAL)  
 SCALE: 1/4"=1'-0"



5 INTERIOR ELEVATION (TYPICAL)  
 SCALE: 1/4"=1'-0"



6 INTERIOR ELEVATION (TYPICAL)  
 SCALE: 1/4"=1'-0"



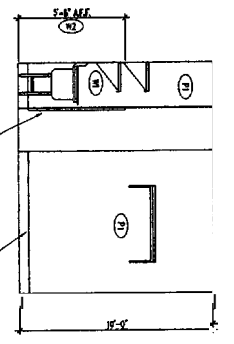
7 INTERIOR ELEVATION (TYPICAL)  
 SCALE: 1/4"=1'-0"

WALLCOVERING/POSTER INFORMATION

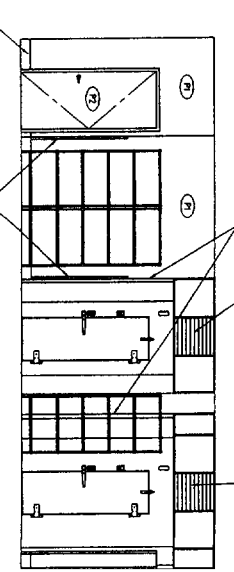
V1 COLOR - YELLOW SUNSPOT (YELLOW)  
 "TOASTY" POSTER

V2 COLOR - WEEPING WILLOW (GREEN)  
 "SALAD" POSTER  
 "FANTASTICO" POSTER

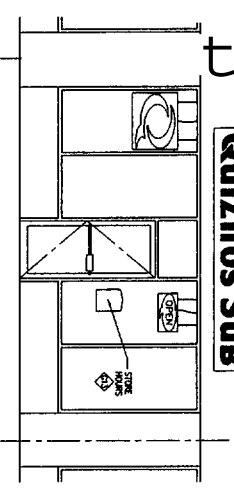
V3 COLOR - BLUE MOON (BLUE)  
 "PRIMO DEU MEATS" POSTER



8 INTERIOR ELEVATION (TYPICAL)  
 SCALE: 1/4"=1'-0"



9 INTERIOR ELEVATION (TYPICAL)  
 SCALE: 1/4"=1'-0"

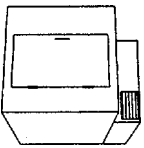


10 INTERIOR ELEVATION (TYPICAL)  
 SCALE: 1/4"=1'-0"





**KOLPAK FREEZER WORKSHEET**



FRANCHISEE \_\_\_\_\_  
 STORE # \_\_\_\_\_  
 SHIPPING ADDRESS: \_\_\_\_\_  
 CITY, STATE, ZIP \_\_\_\_\_  
 PHONE: \_\_\_\_\_  
 FAX: \_\_\_\_\_  
 EMAIL: \_\_\_\_\_

The primary purpose for this worksheet is to determine if the store location indicated above can use the standard 9'-6" tall Polar Pak walk-in freezer configuration. You will need to physically measure the ceiling height where the walk-in will be located. PLEASE TAKE INTO CONSIDERATION ALL MECHANICAL, DUCTWORK, BEAMS, PLUMBING, ELECTRICAL, AND SPRINKLER SYSTEMS. On 9'-6" high walk-ins, 13'-0" of clearance is required unless remote system is used - see below. For a pre-assembled remote walk-in, a floor drain or condensate evaporator is required. For a Polar Pak walk-in, a floor drain or condensate evaporator is not required. It is important that the minimum ceiling height is free from all pipes, beams, ducts, etc. Any calculations will result in a unit that will not fit properly. Failure to measure the ceiling accurately will result in additional costs and the delays.

THIS WORKSHEET MUST BE COMPLETED BEFORE SENDING THE CONSTRUCTION DOCUMENTS TO ANYONE'S DESIGN AND CONSTRUCTION DEPARTMENT. YOUR PLANS WILL NOT BE COMPLETED AND AN EQUIPMENT ORDER WILL NOT BE GENERATED WITHOUT THIS WORKSHEET BEING CORRECTLY COMPLETED.

Questions:  
 What is the maximum UNOBSTRUCTED ceiling height at the walk-in location? 9'-6" 7'-6"  
 What size freezer will fit the above location (CIRCLE ONLY ONE) TOP MOUNT REMOTE  
 What type of compressor do you require (CIRCLE ONLY ONE) FOR THE COMPRESSOR TYPE INDICATED ABOVE - ONLY.

**TOP MOUNT COMPRESSOR**

YES NO Do you have 13'-0" clearance from floor to ceiling above the footprint of the freezer to fit the top mount compressor? 1

YES NO Added 3 amps will fit into the current electrical panel?

YES NO Do you have 10'-0" clearance from floor to ceiling around the freezer footprint?

YES NO Added 3 amps will fit into the current electrical panel?

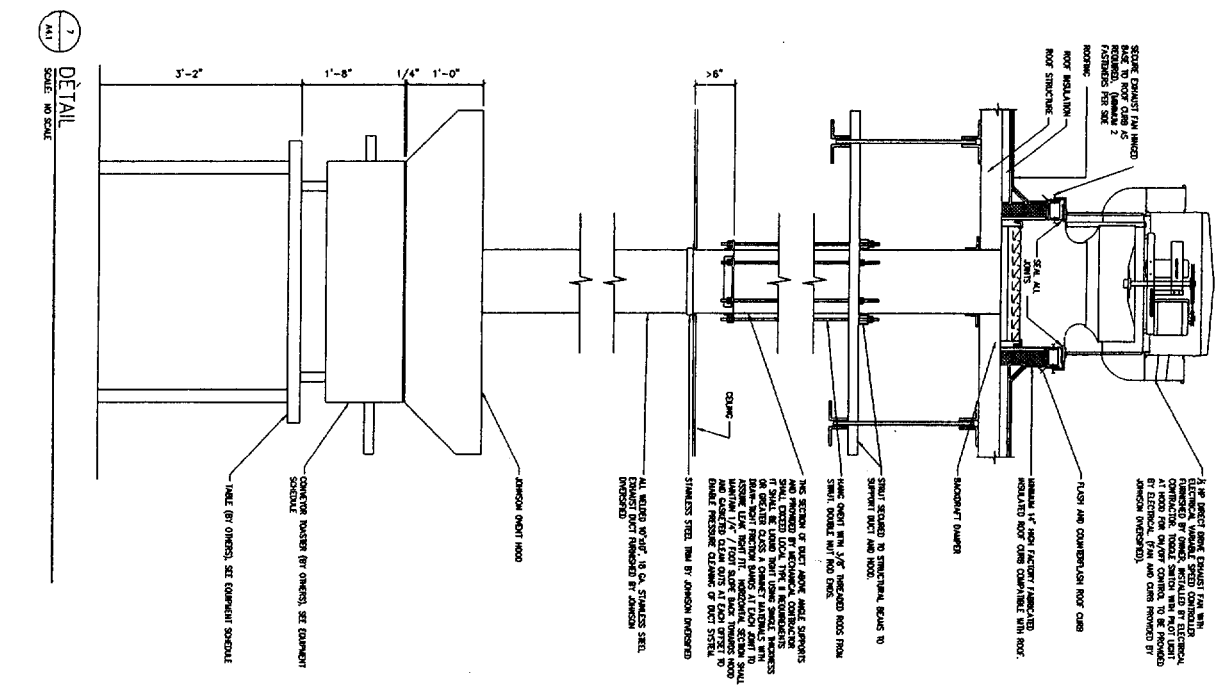
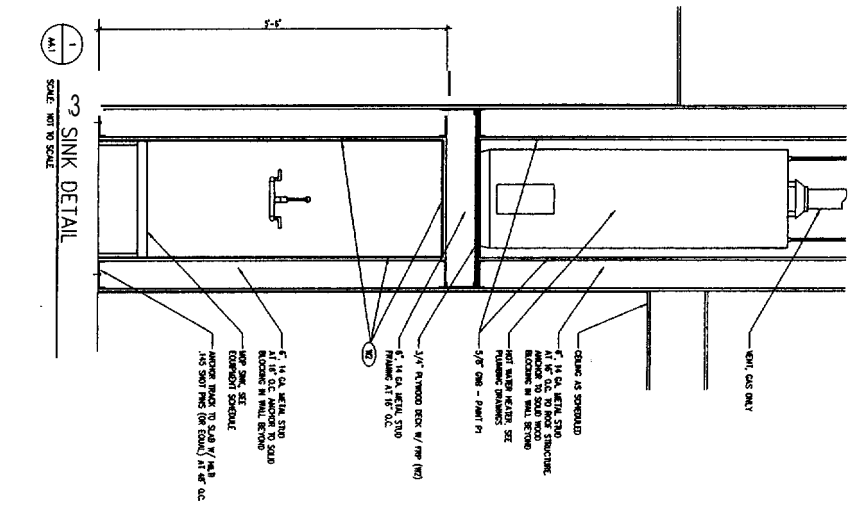
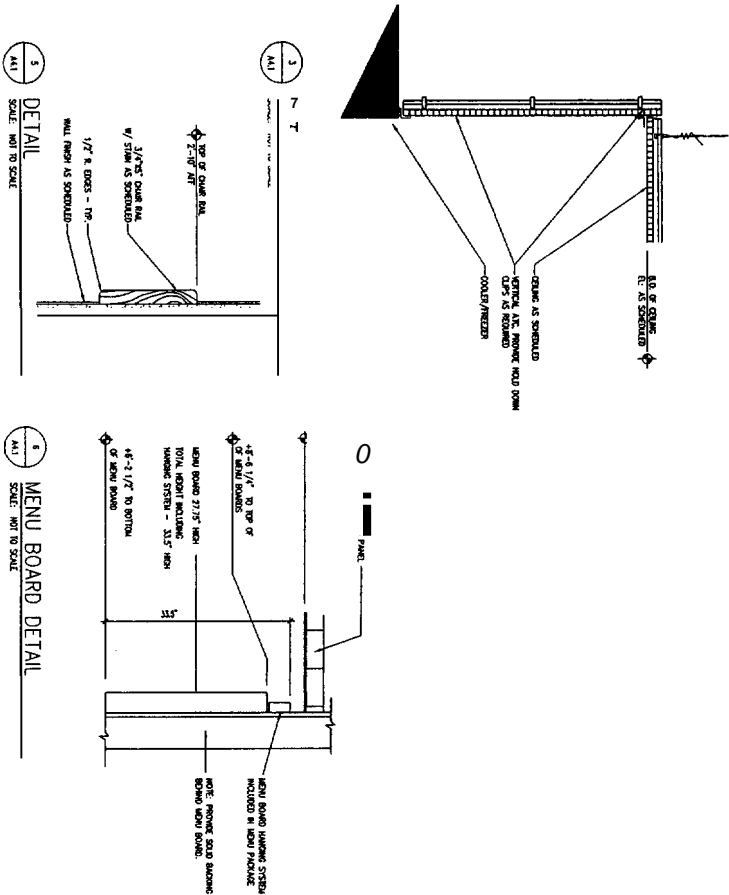
Architect's Signature / Date \_\_\_\_\_

Print Name \_\_\_\_\_

Phone \_\_\_\_\_

Fax \_\_\_\_\_

NOTE:  
 THE AREA DIRECTOR/FRANCHISEE MUST SPECIFY THE COMPRESSOR TYPE FOR THE COOLER AND FREEZER (KOLPAK WORKSHEET). TOP MOUNT IS THE STANDARD AND WILL BE ORDERED UNLESS OTHERWISE SPECIFIED. (VIA KOLPAK WORKSHEET). THE STANDARD FREEZER HEIGHT IS 9'-6" & WILL BE ORDERED UNLESS OTHERWISE SPECIFIED (VIA KOLPAK WORKSHEET). A CEILING HEIGHT OF 13'-0" MIN. CLEAR CEILING HEIGHT IS REQUIRED FOR TOP MOUNT COMPRESSORS. A CEILING HEIGHT OF 10'-0" MIN. CLEAR CEILING HEIGHT IS REQUIRED FOR REMOTE COMPRESSORS.



**TYPE II HOOD SCHEDULE**

Type	Height	Width	Depth	Material	Material	Material
hood and Exhaust Fan	34"	21-25"	600"	303	303	303
				303	303	303

CONTACT: Pine Tree Shopping Center  
 1030 Brighton Avenue  
 Portland, ME 04102  
 603-757-4444

location:  
**QUIZNOS**  
**SUB**  
 RETAIL CENTER  
 Pine Tree  
 Shopping Center  
 1030 Brighton Avenue  
 Portland, ME 04102  
 store no. 6757



FOR CONSTRUCTION  
 project no. 6757  
 date 1-18-06  
 file ME-6757-Pine Tree  
 sheet file  
**DETAILS**



sheet designer:  
**A4.1**