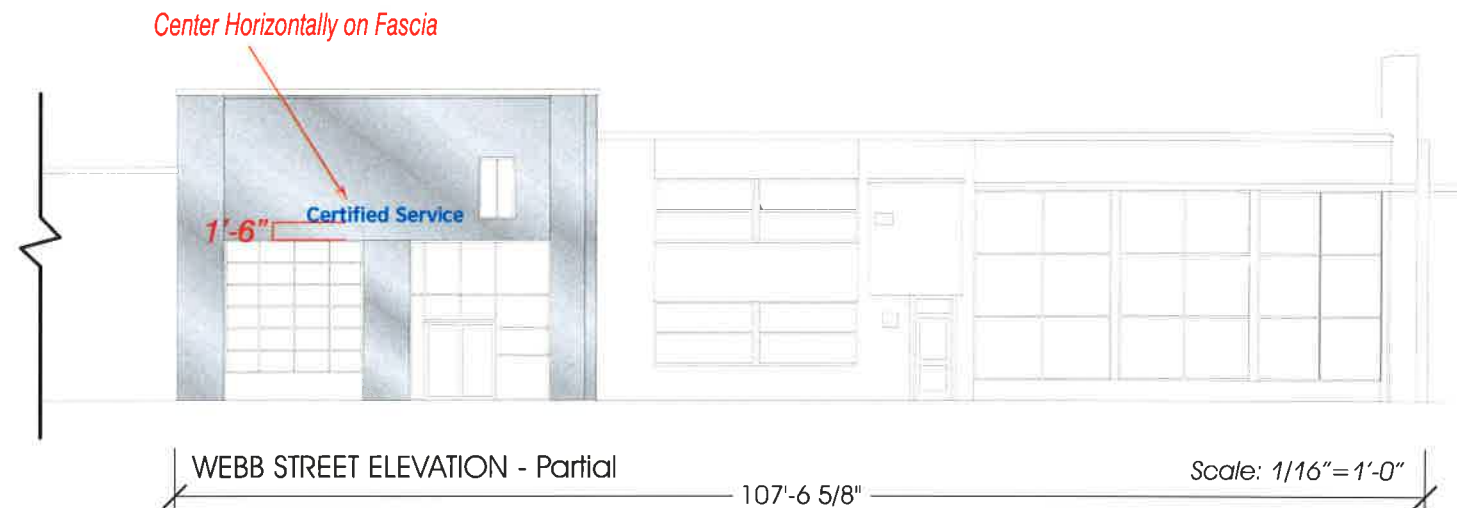




ELEMENTS					
ELEMENT	SIZE (HEIGHT)	LENGTH	SQUARE FT.	WEIGHT	ELECTRICAL
Certified Service Letters	16"	13'-4 15/16"	17.88	64 lbs	1 amp



SIGNATURE REQUIRED TO VALIDATE ORDER

DEALER APPROVAL

Date: / /



410 N. CEDAR BLUFF RD. • SUITE 101 • KNOXVILLE, TN 37923
 • Tel (865) 693-1105 • Fax (888) 694-1106 • Toll Free (866) 218-1976

Installer to Verify Measurements Due to Field Variations



This sign intended to be installed in accordance with the requirements of Article 600 of the National Electrical Code and / or other applicable local codes. This includes proper grounding and bonding of the sign.



© PATTISON SIGN GROUP INC. ALL RIGHTS RESERVED. NO PART OF THIS DRAWING MAY BE REPRODUCED IN ANY FORM WITHOUT WRITTEN PERMISSION FROM PATTISON SIGN GROUP INC. www.pattison.com

BAC#:	218509		
Client:	Quirk Chevrolet		
Site:	Portland, ME		
Date:	10-29-13	Rev. Date:	
Draftsman:	A. Matthews	Rev #:	
Scale:	as noted	Page:	1/1