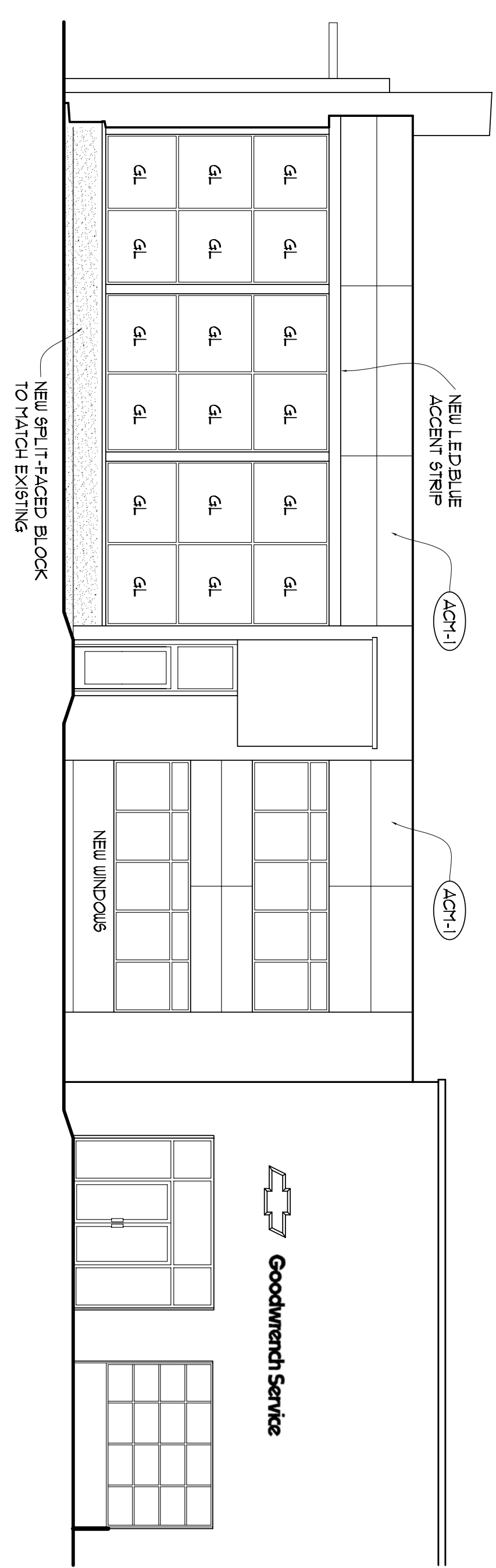
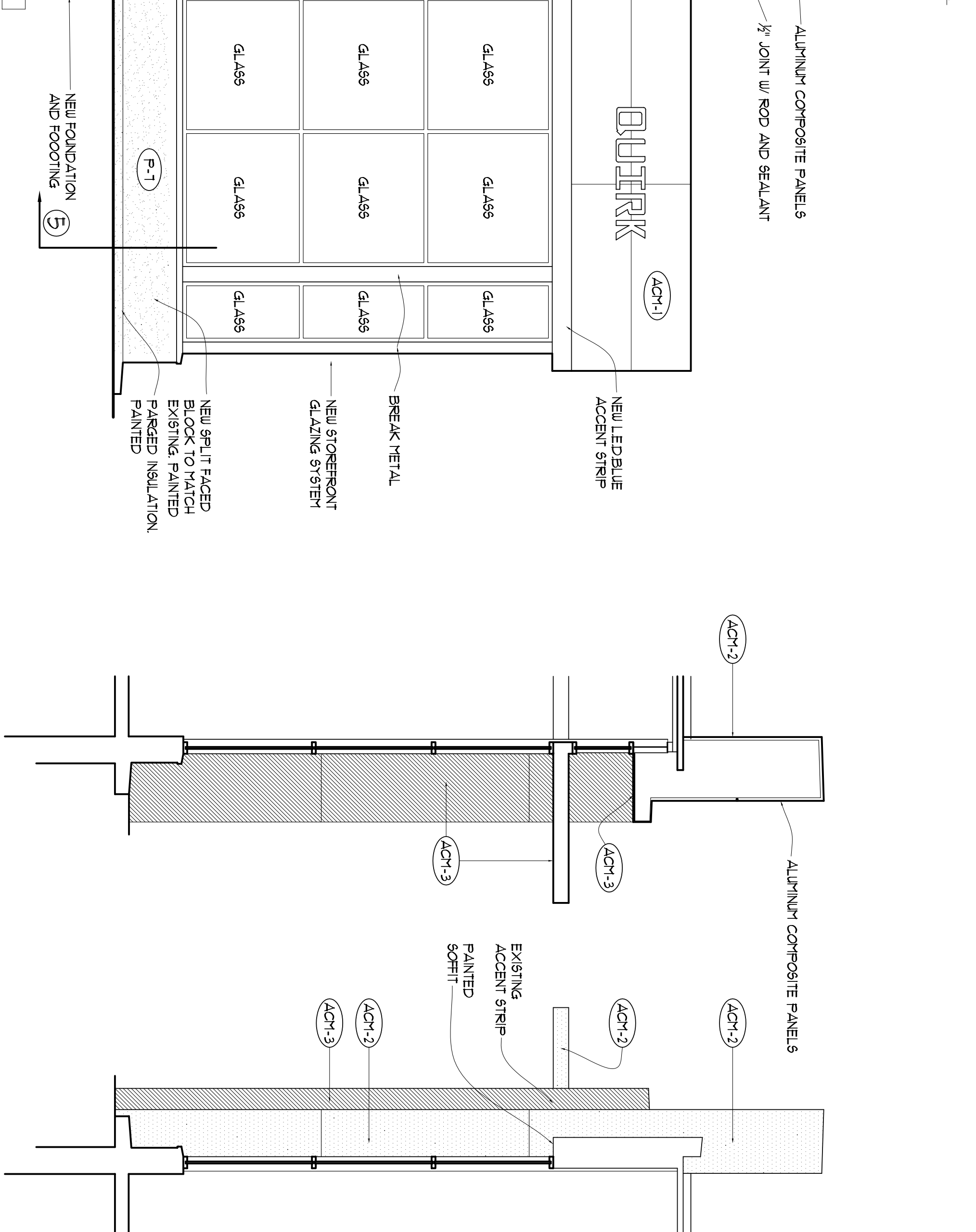


1 SHOWROOM ELEVATION
1/4" = 1'-0"

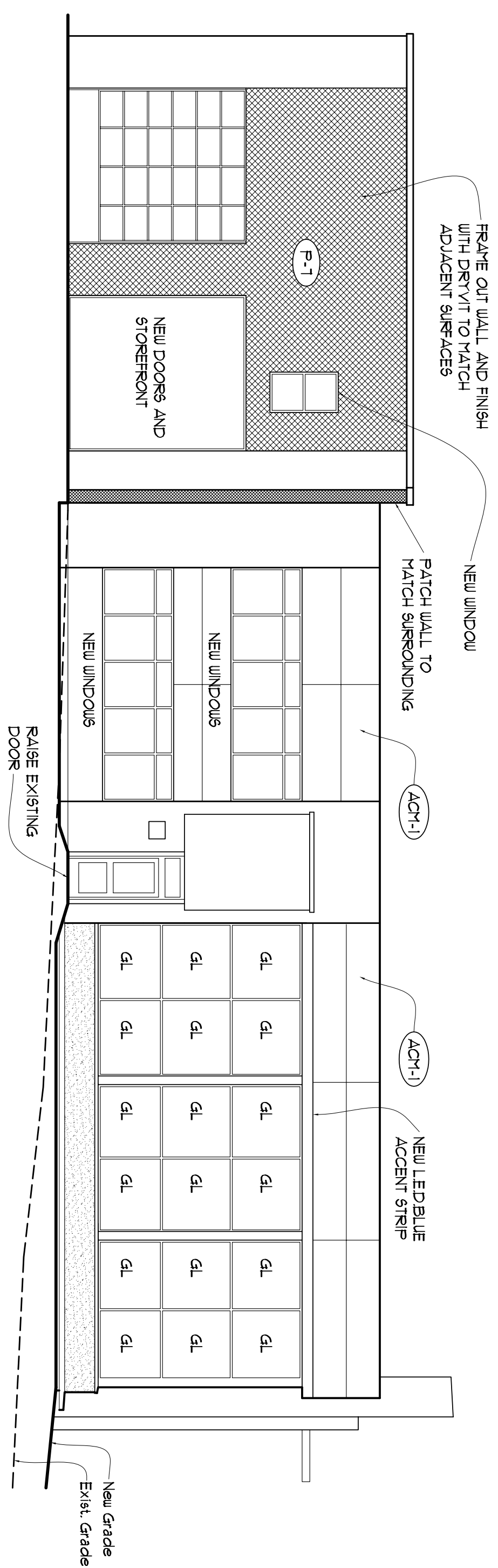


1 ELEVATION
1/8" = 1'-0"



4 SECTION/ELEVATION
1/4" = 1'-0"

5 SECTION/ELEVATION
1/4" = 1'-0"



2 ELEVATION
1/8" = 1'-0"

LOCATION	CODE	MATERIAL	MANUFACTURER	MFR. PHONE NO.	PRODUCT INFORMATION
ENTRY ELEMENT	ACH-1	ALUMINUM MATERIAL	ALPOLIC	7573825724 Contact: Dave Kenney	BRIGHT ALUMINUM METALLIC #TRX-3MM, MAXIMUM SHEET SIZE: 62" X 122" OR EQUAL
ENTRY ELEMENT	ACH-2	ALUMINUM COMPOSITE MATERIAL	ALPOLIC	7573825724 Contact: Dave Kenney	#CEU-SM1 TO MATCH PMS 9900, MAXIMUM SHEET SIZE: 48" X 122", OR EQUAL
ENTRY ELEMENT	ACH-3	ALUMINUM COMPOSITE MATERIAL	ALPOLIC	7573825724 Contact: Dave Kenney	#AT-1-S01RGES, ALICOROND, ALCOA, BUSHED HAZELINE ALUMINUM #H1-A3MM, MAXIMUM SHEET SIZE: 48" X 122, OR EQUAL
ENTRY ELEMENT	PP-1 (ACH ALT)	PORCELAIN TILE PANELS			#AT-1-S01RGES, ALICOROND, ALCOA, PENDING
ENTRY ELEMENT	P-7	PAINT	BENJAMINE MOORE	888-854-8889	#OC-06 SNOW WHITE EXTERIOR GRADE OR EQUAL
GLAZING GLASS DOORS	GL-2	GLASS	PPG GLASS	9344262606 Contact: Joe Miller	#AZIRIA BLUE GLASS WITH CLEAR ANODIZED ALUMINUM OR SILVER METALLIC FRAMES (AVAILABLE IN LOW E) OR EQUAL SPECIFICATIONS VARY DEPENDING ON LOCATION (AND BUILDING CODES)

A3	BUILDING ELEVATIONS	Date: 10/24/06	Scale: as noted	Project:	Owner:	ARCHETYPE, P.A. ARCHITECTS
		Revisions		SHOWROOM FACADE RENOVATION	QUIRK CHEVROLET OF PORTLAND	48 Union Wharf Portland, Maine 04101 (207) 772-6022 Fax (207) 772-4056