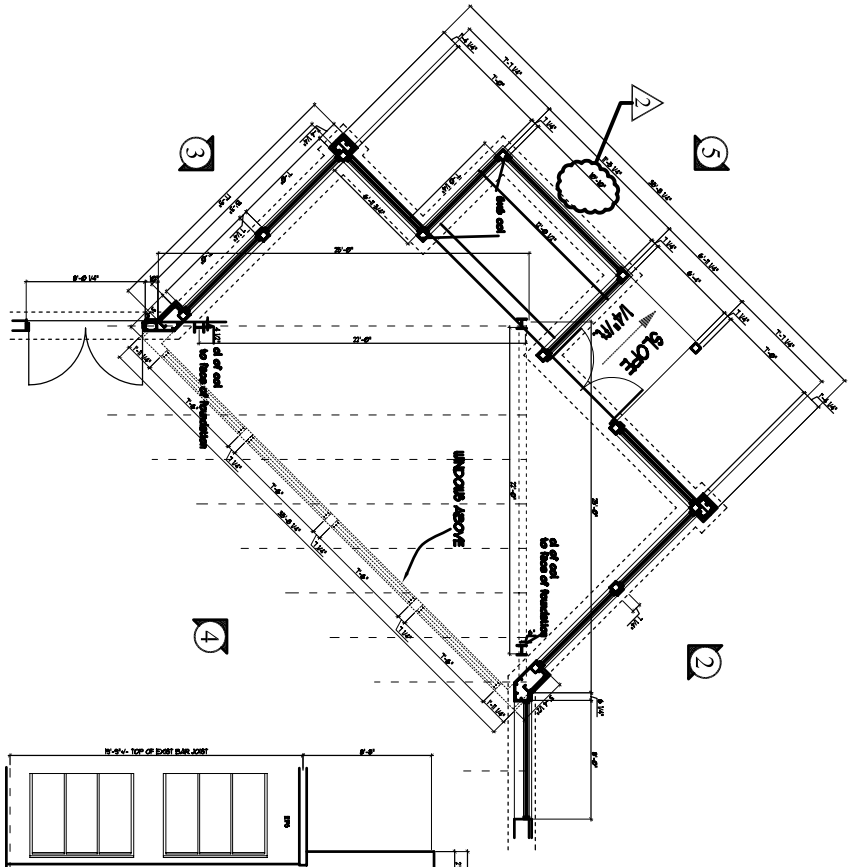


4 PROPOSED WEST (RAND ROAD) ELEVATION
SCALE 1/4" = 1'-0"

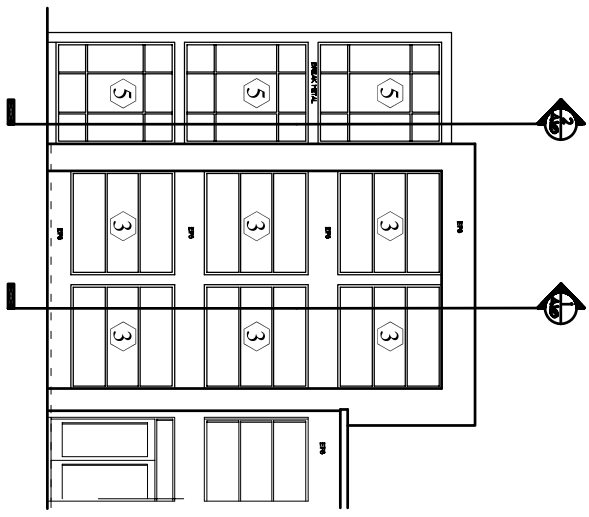
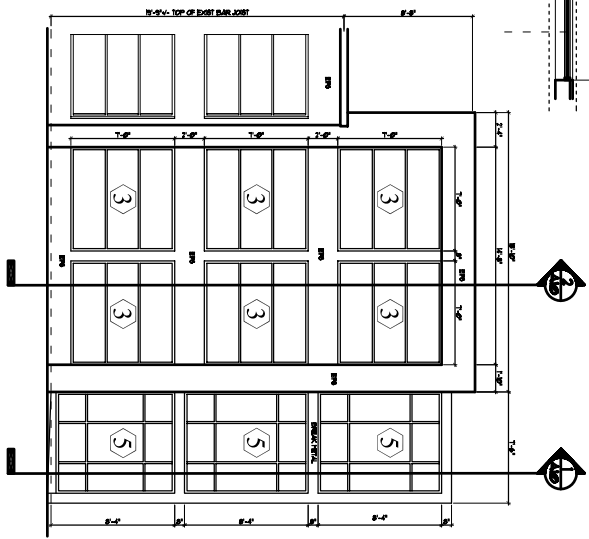
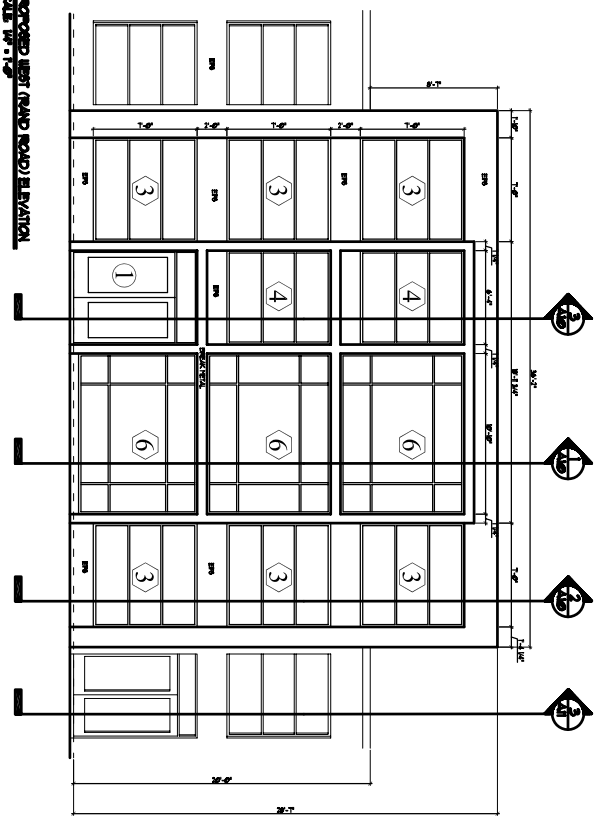


1 PROPOSED WEST (RAND ROAD) ELEVATION
SCALE 1/4" = 1'-0"

2 PROPOSED WEST (RAND ROAD) ELEVATION
SCALE 1/4" = 1'-0"

3 PROPOSED WEST (RAND ROAD) ELEVATION
SCALE 1/4" = 1'-0"

5 PROPOSED WEST (RAND ROAD) ELEVATION
SCALE 1/4" = 1'-0"



<h1 style="font-size: 48px; margin: 0;">A5</h1>	TOWER PLAN & ELEVATIONS	MAR 24, 2003 1/4" = 1'-0" Revisions Issued for Contract: May 27 2003 Issued for MDP: Oct 9, 2003	Project: FOREST CITY CHEVROLET BRIGHTON AVE PORTLAND, MAINE	ARCHETYPE, P.A. ARCHITECTS 48 Union Wharf Portland, Maine 04101 (207) 772-6022 Fax (207) 772-4056	Owner: