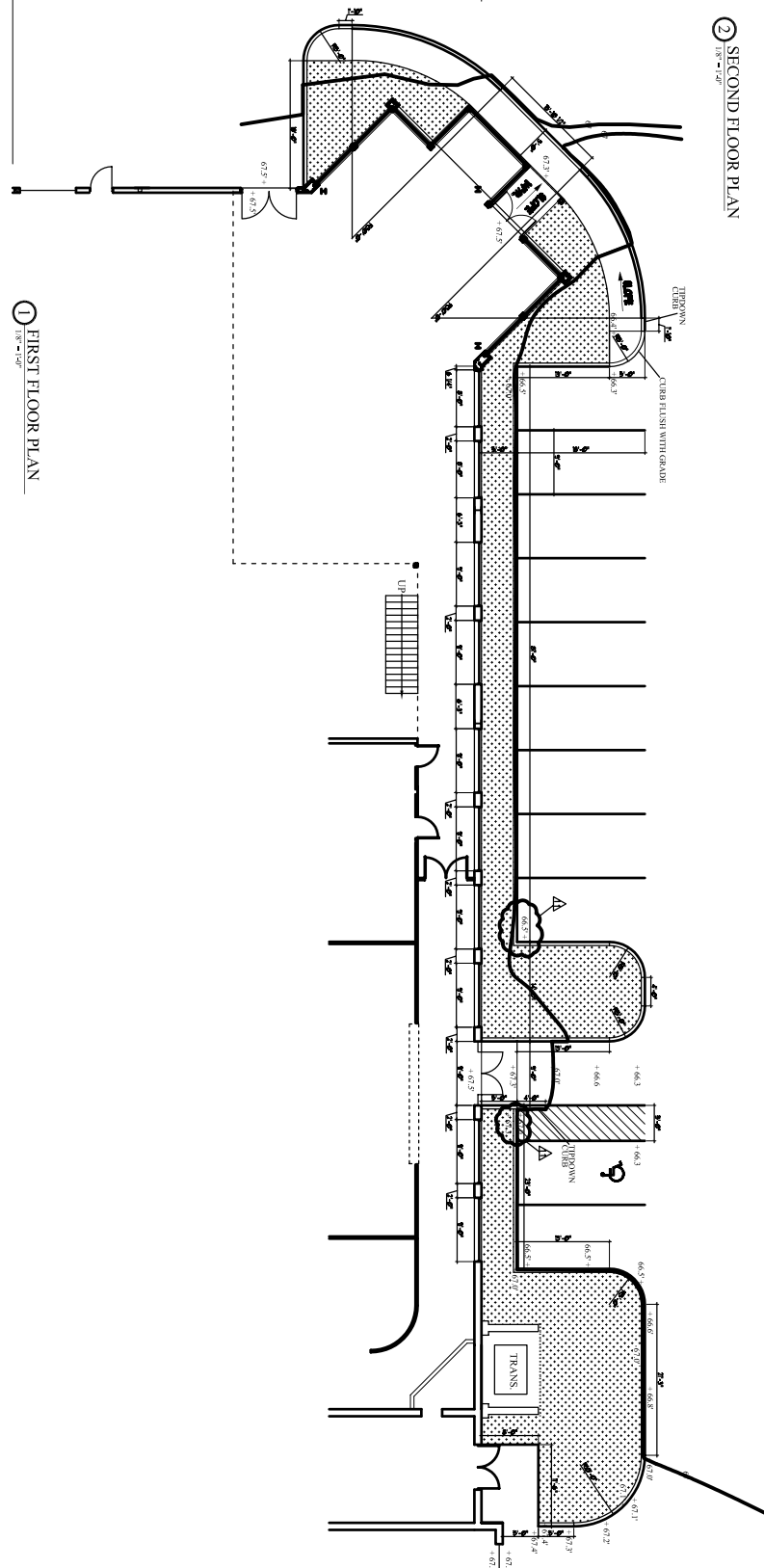
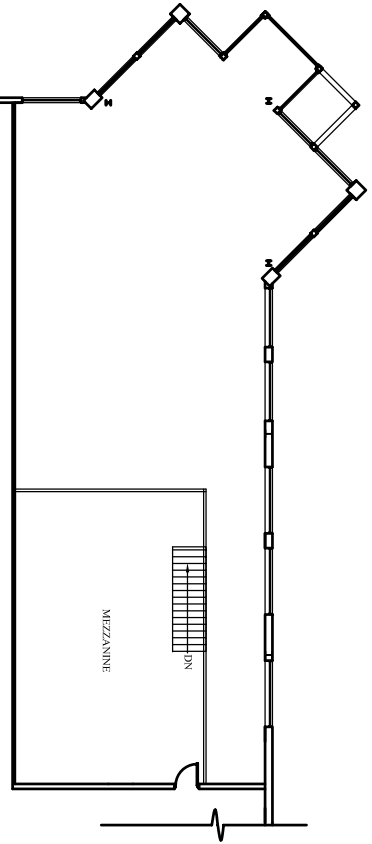


66'-0"  
NEW STEEL

1 FIRST FLOOR PLAN  
1/8" = 1'-0"



2 SECOND FLOOR PLAN  
1/8" = 1'-0"



KEY  
WHITE STONE

AIA

MOTOR CITY WINDOW & PARKING LAYOUT

July 1, 2003	1/16" = 1'-0"	Project:
Revisions		
Issued For Contract: May 27 2003		
▲ 09-08-03 Spot Heights Changed		
Issued For MEP: Oct 9, 2003		

FOREST CITY CHEVROLET

BRIGHTON AVE  
PORTLAND, MAINE

ARCHETYPE, P.A.  
ARCHITECTS

48 Union Wharf Portland, Maine 04101  
(207) 772-6022 Fax (207) 772-4056

Owner: