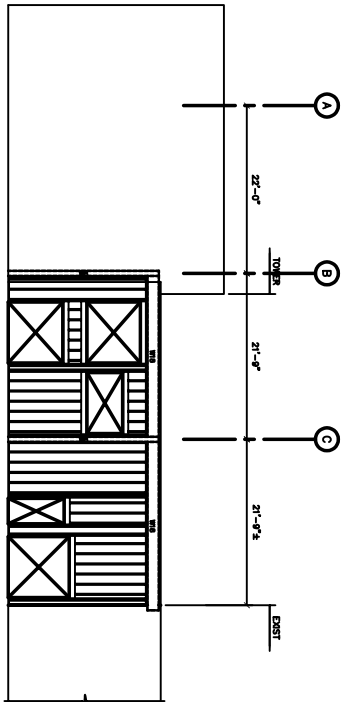
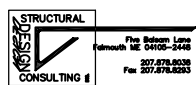


WEST ELEVATION INTILL FRAMING
 1/2"x4"-0"
 SEE ARCHITECTURAL DRAWINGS FOR SIZES AND LOCATIONS OF ALL OPENINGS.
 ALL LIGHTING FRAMING BY DETROIT INDUSTRIES, INC.
 STUDS - 60S1404", FASTEN TO BASE TRACK WITH #10 SCREWS AT EACH FLANGE. ALLOW 3/4" DEFLECTION GAP.
 TOP TRACK - 60S14, FASTEN TO STRUCTURAL STEEL WITH (2) 0.148 P.A.F. @ 16".
 BASE TRACK - 60S14, FASTEN TO CONCRETE WITH 0.148 P.A.F. @ 16".
 JAMBS - (CONCRMTL).
 ROY HANGERS AND SAILS - (2) 60S16 WITH 60S16 TOP AND BOTTOM BRACING - 2"x20 OVAL FLAT STRAP INSIDE AND OUTSIDE AT MAX 54" ATTACH TO EACH STUD WITH #10 SCREW.



SOUTH ELEVATION INTILL FRAMING
 1/2"x4"-0"
 SEE ARCHITECTURAL DRAWINGS FOR SIZES AND LOCATIONS OF ALL OPENINGS.
 ALL LIGHTING FRAMING BY DETROIT INDUSTRIES, INC.
 STUDS - 60S1404", FASTEN TO BASE TRACK WITH #10 SCREWS AT EACH FLANGE. ALLOW 3/4" DEFLECTION GAP.
 TOP TRACK - 60S14, FASTEN TO STRUCTURAL STEEL WITH (2) 0.148 P.A.F. @ 16".
 BASE TRACK - 60S14, FASTEN TO CONCRETE WITH 0.148 P.A.F. @ 16".
 JAMBS - (CONCRMTL).
 ROY HANGERS AND SAILS - (2) 60S16 WITH 60S16 TOP AND BOTTOM BRACING - 2"x20 OVAL FLAT STRAP INSIDE AND OUTSIDE AT MAX 54" ATTACH TO EACH STUD WITH #10 SCREW.



File Name: Less
 Drawn: MC 04100-0408
 207.676.6038
 Fax: 207.676.6293

ARCHETYPE, P.A.
 ARCHITECTS

48 Union Wharf Portland, Maine 04101
 (207) 772-6022 Fax (207) 772-4086

Project:
 FOREST CITY
 CHEVROLET

BRIGHTON AVE
 PORTLAND, MAINE

SEP 10, 2003
Revisions

WALL FRAMING ELEVATIONS

