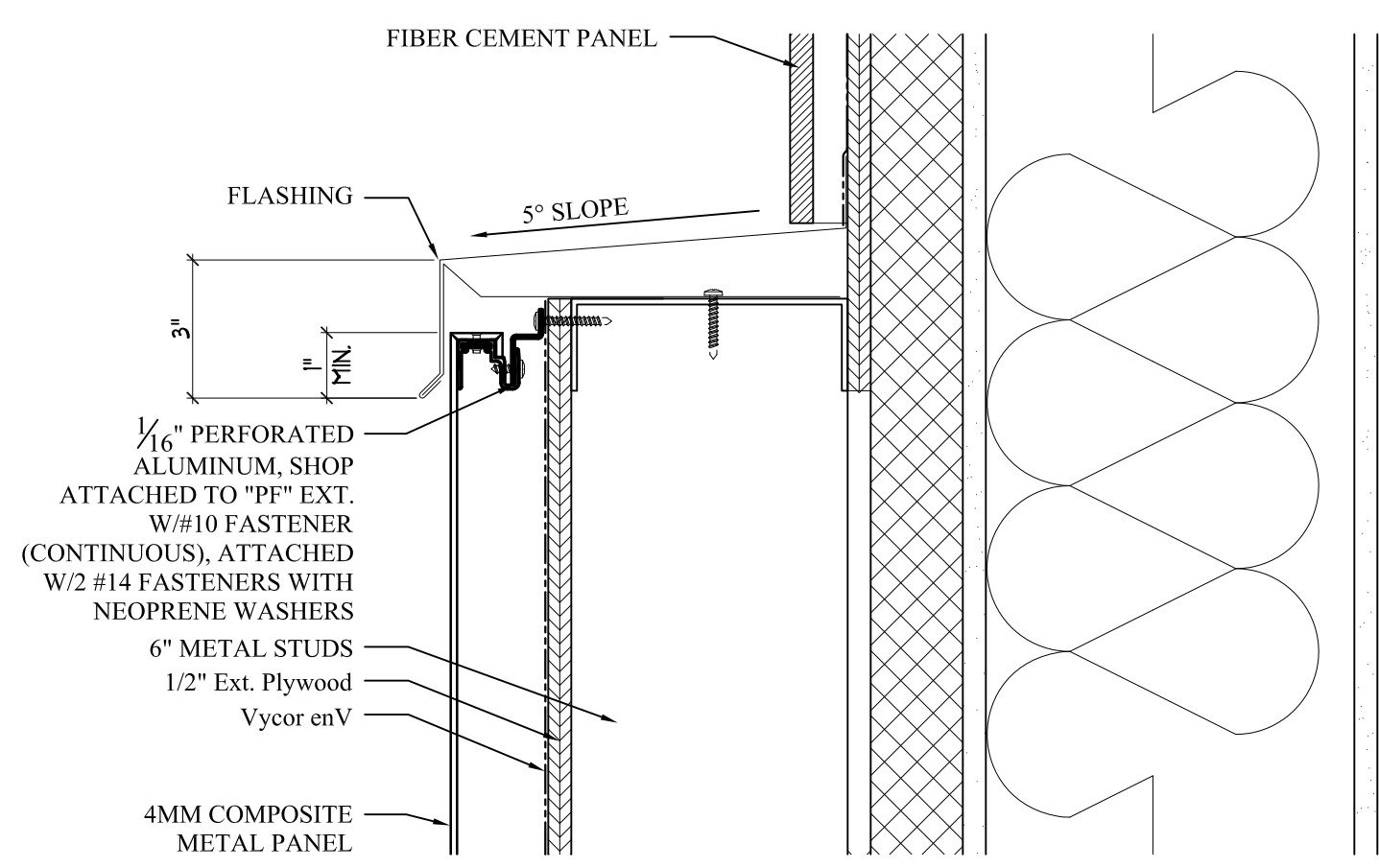
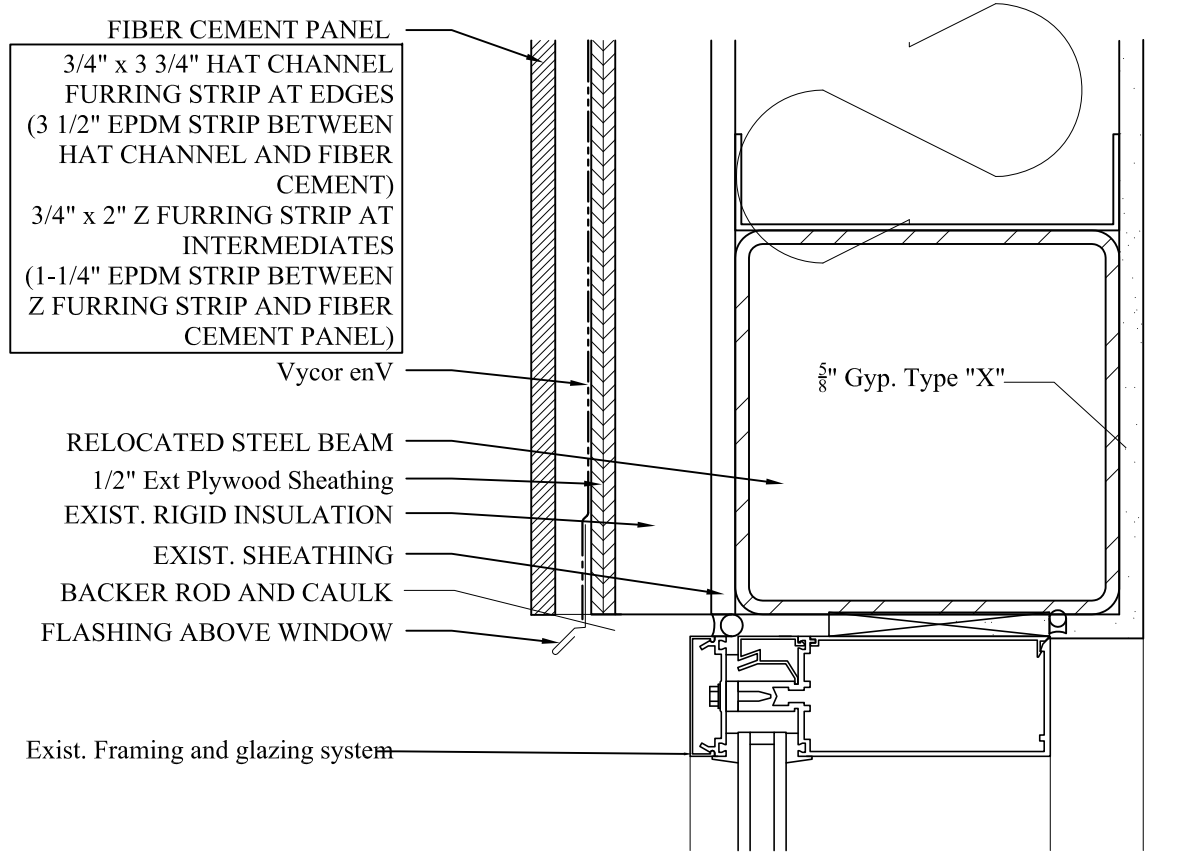


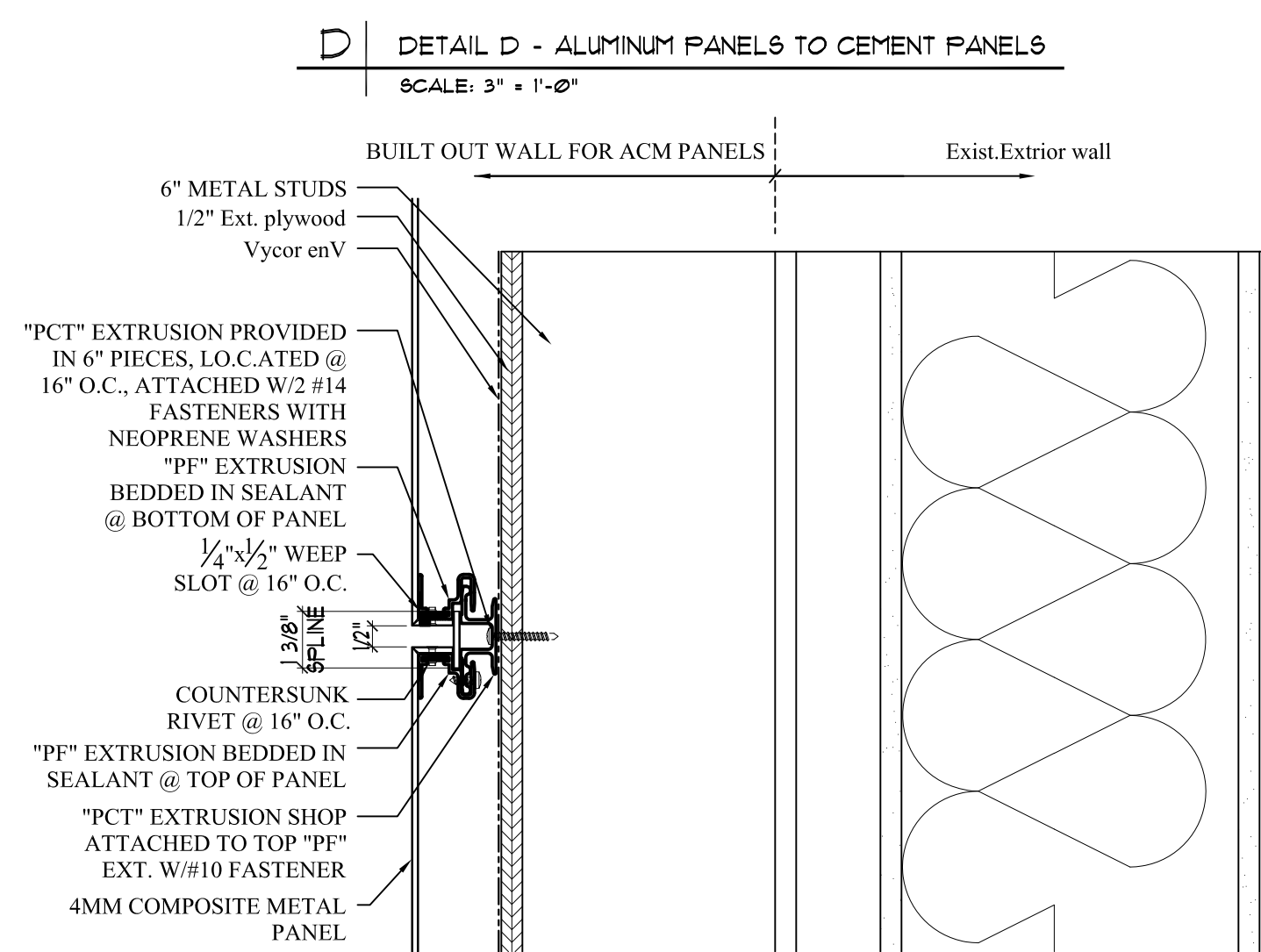
A DETAIL A - CEMENT PANELS ON EXTERIOR WALL
SCALE: 3" = 1'-0"



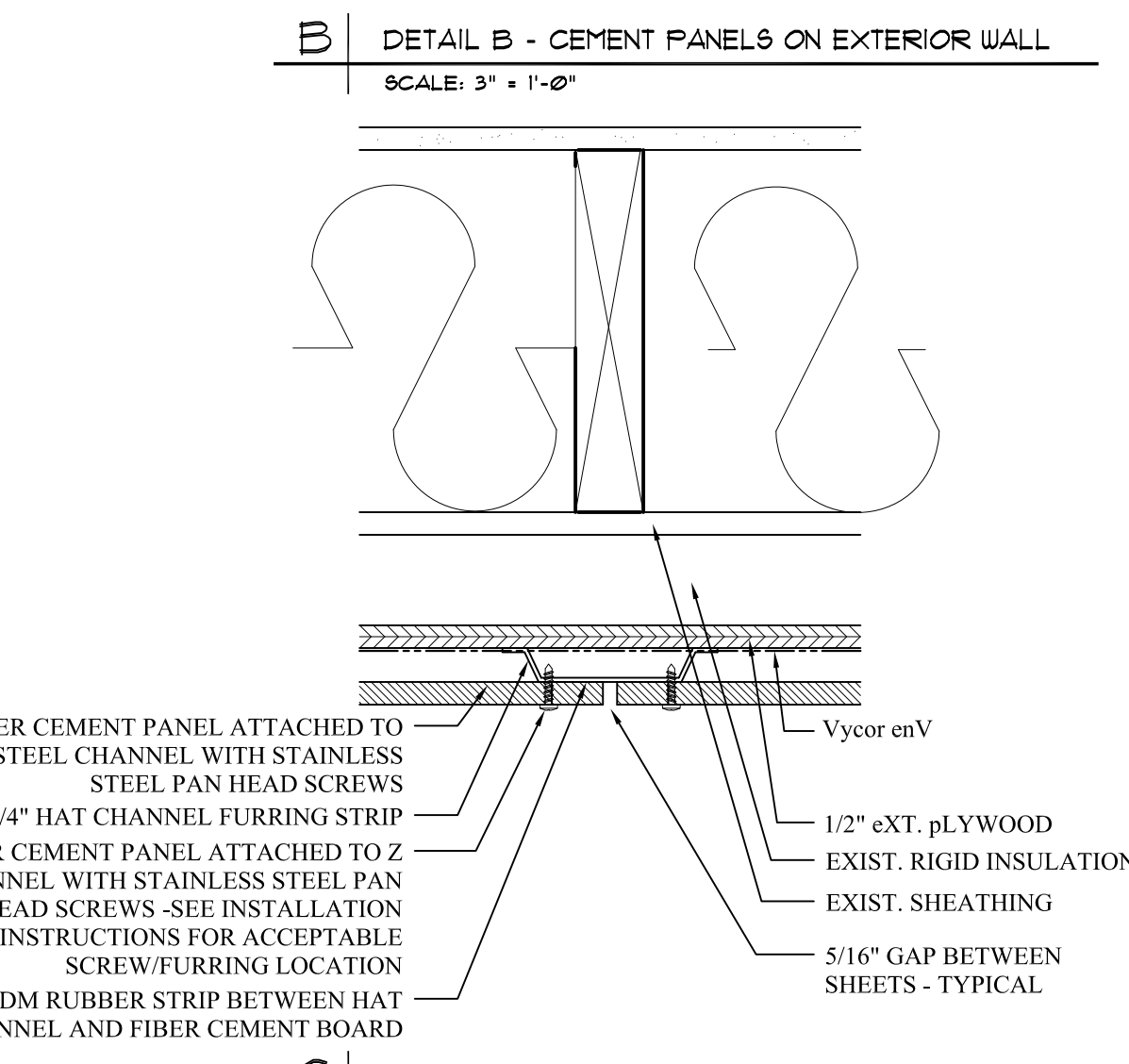
D DETAIL D - ALUMINUM PANELS TO CEMENT PANELS
SCALE: 3" = 1'-0"



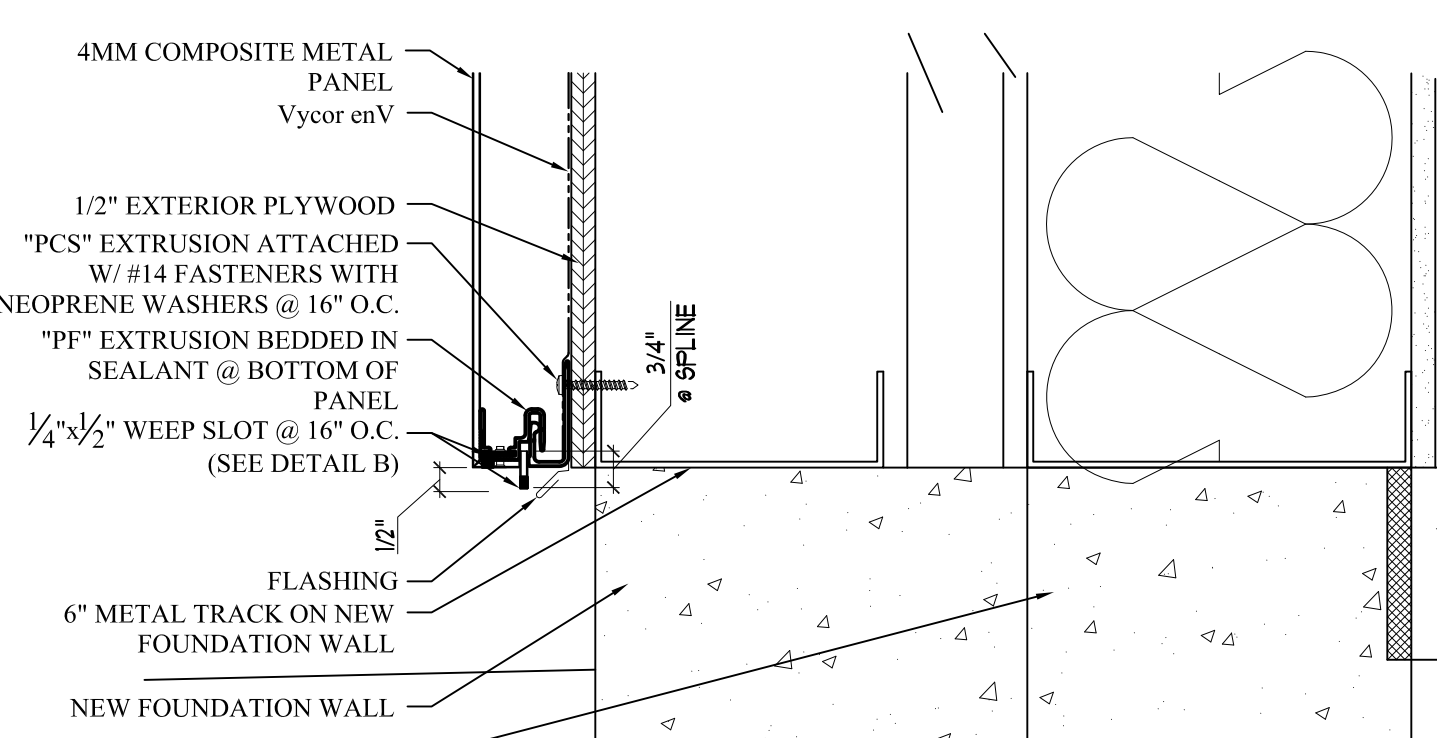
B DETAIL B - CEMENT PANELS ON EXTERIOR WALL
SCALE: 3" = 1'-0"



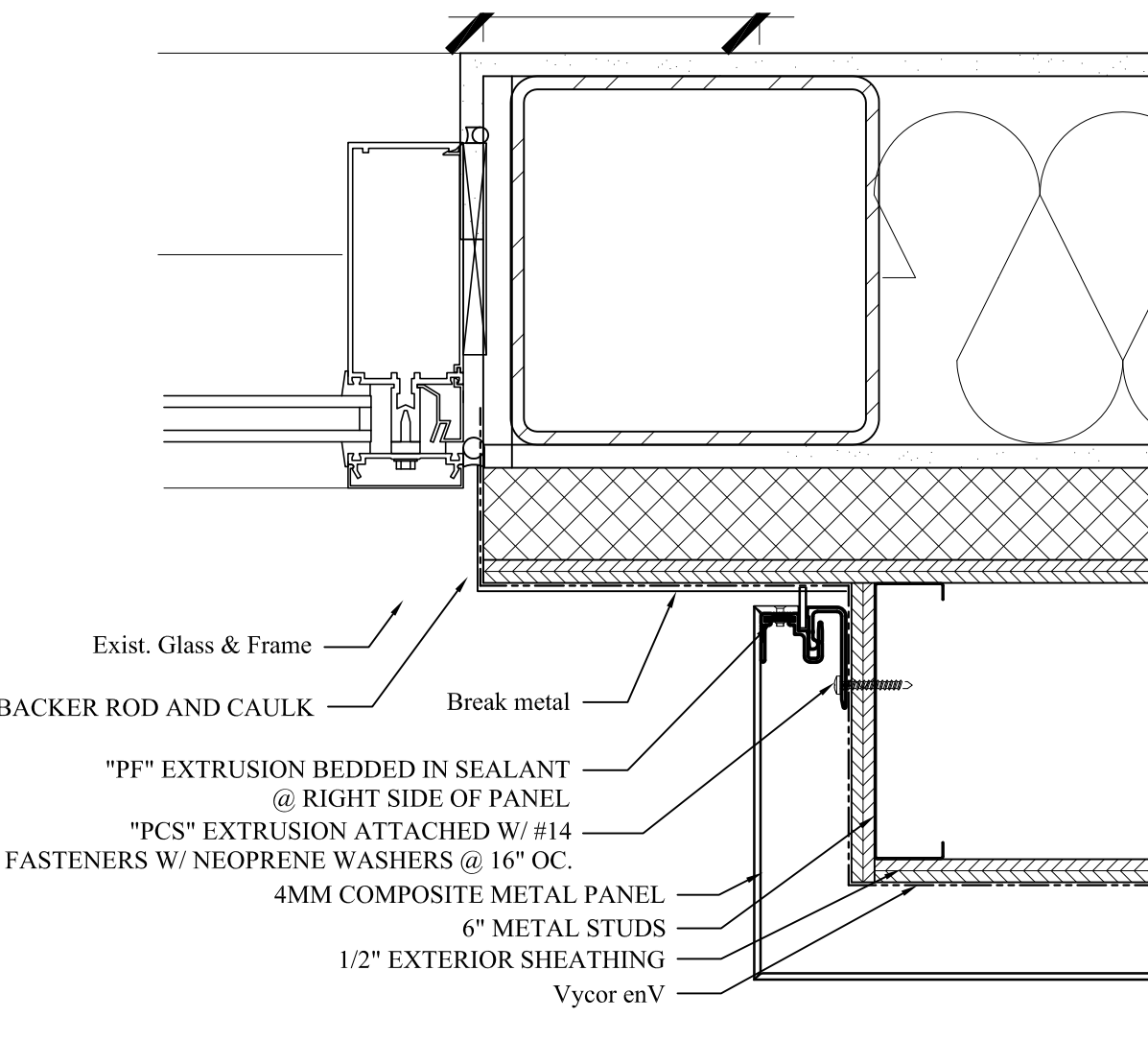
E DETAIL E - ALUMINUM PANELS ON EXTERIOR WALL
SCALE: 3" = 1'-0"



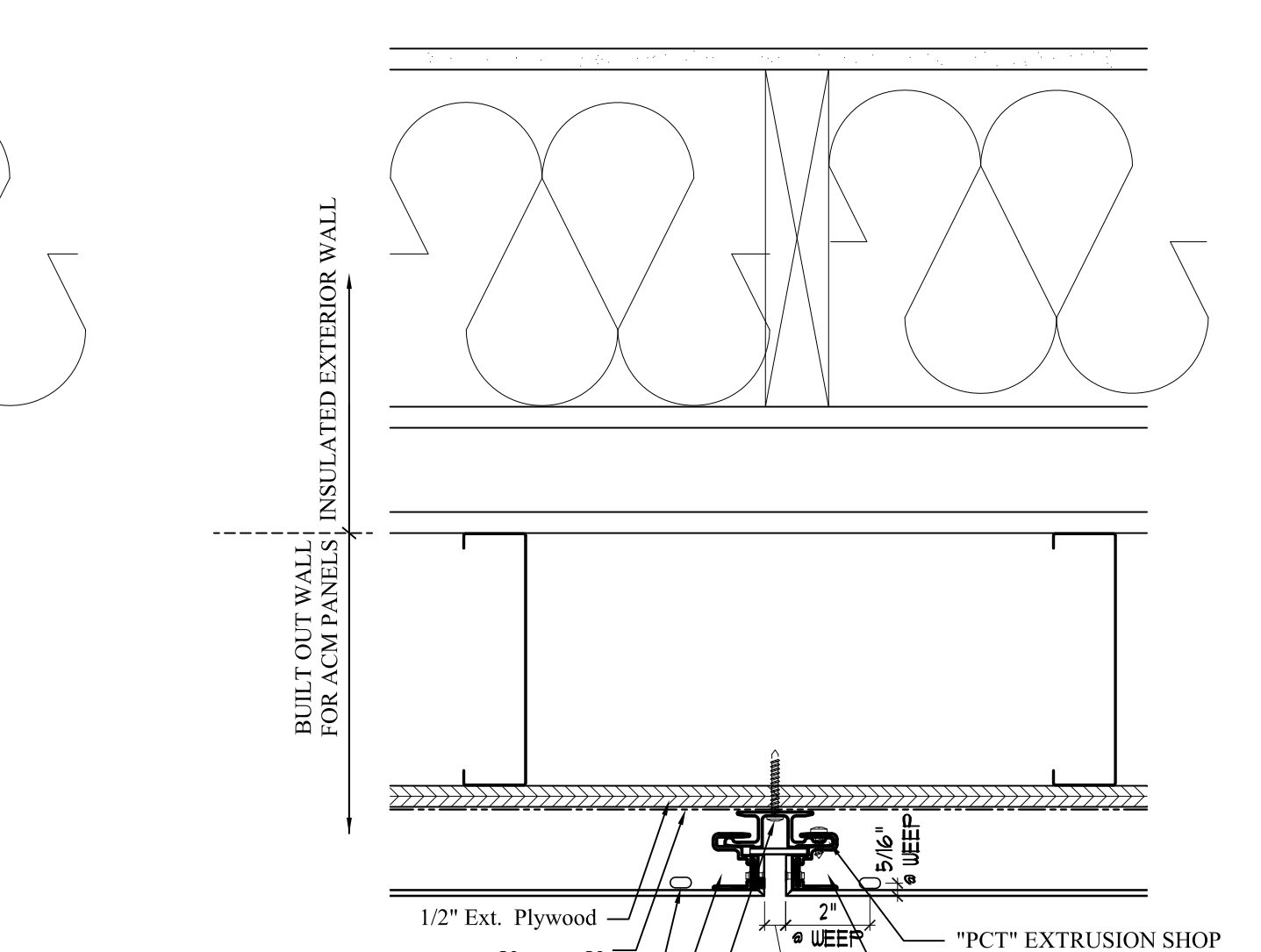
C DETAIL C - CEMENT PANELS ON EXTERIOR WALL
SCALE: 3" = 1'-0"



F DETAIL F - ALUMINUM PANELS AT GRADE
SCALE: 3" = 1'-0"

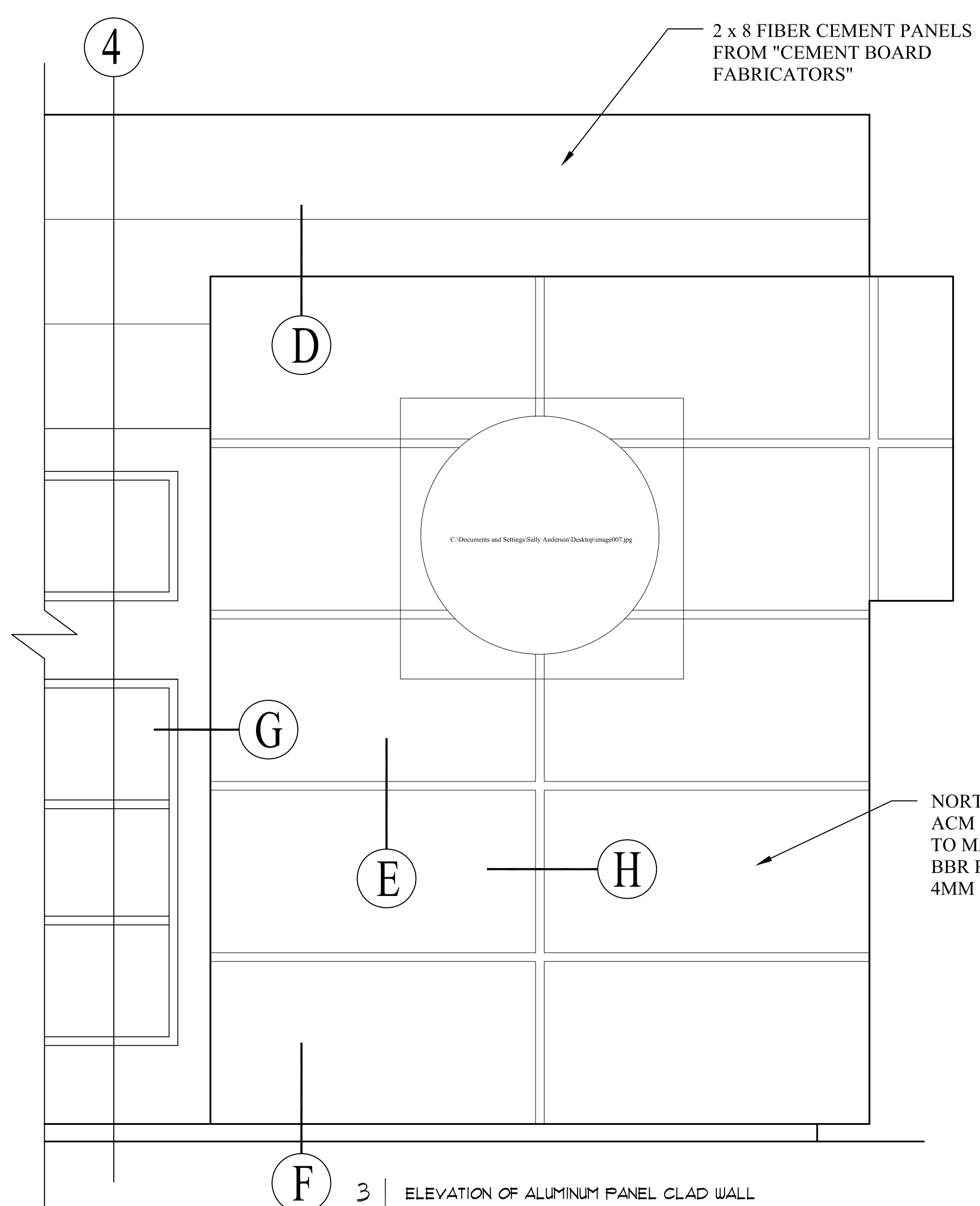


G DETAIL G - ALUMINUM PANELS AT ALUMINUM STOREFRONT
SCALE: 3" = 1'-0"

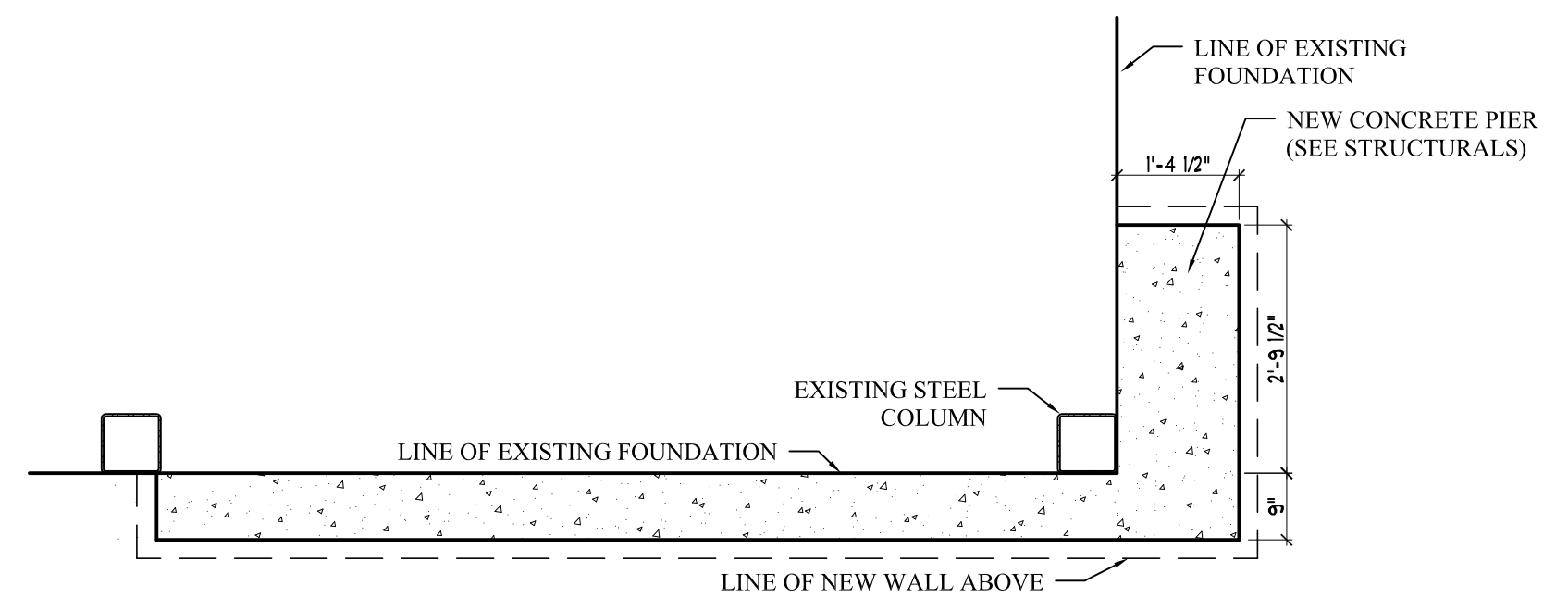


H DETAIL H - ALUMINUM PANELS ON EXTERIOR WALL
SCALE: 3" = 1'-0"

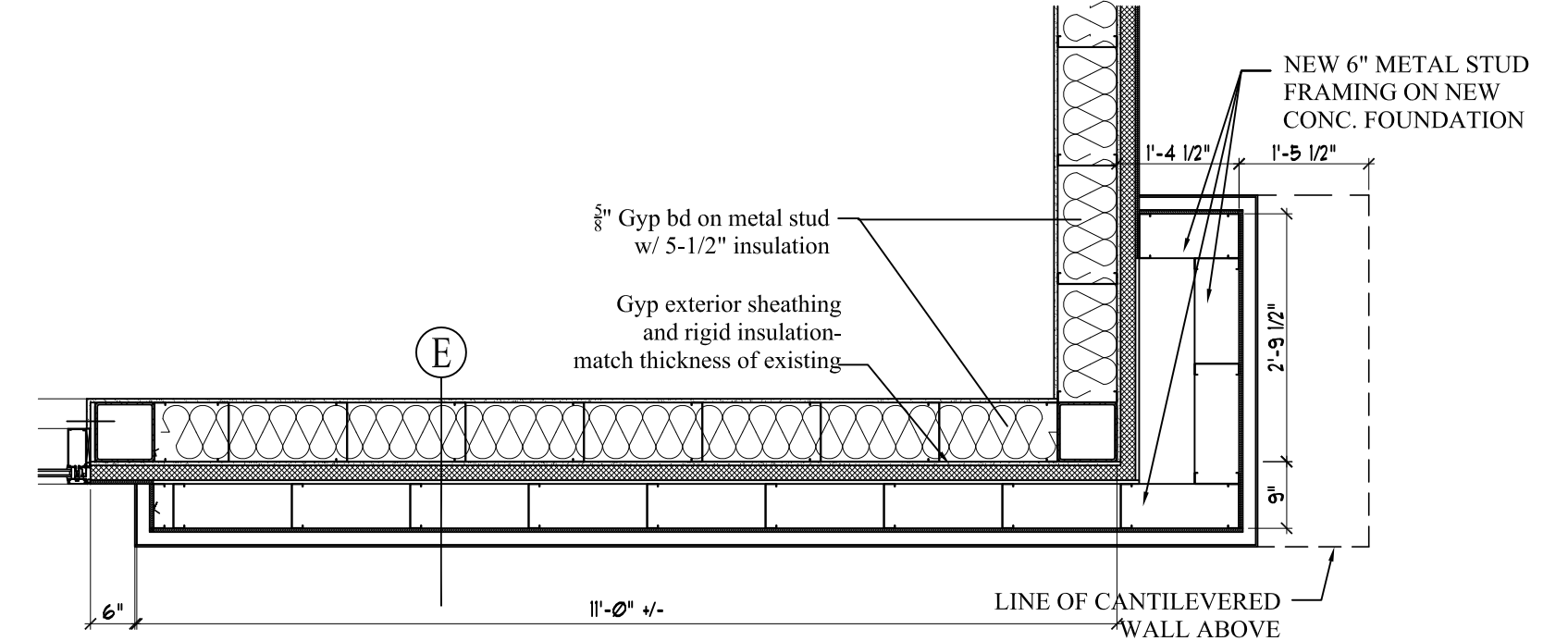
GENERAL NOTES:
 - ALL NEW INFILL TO BE LIGHT GAUGE METAL FRAMING
 - ALL EXISTING WOOD INFILL FRAMING TO HAVE ONE LAYER OF 5/8" TYPE "X" GYP BOARD ON INTERIOR SIDE



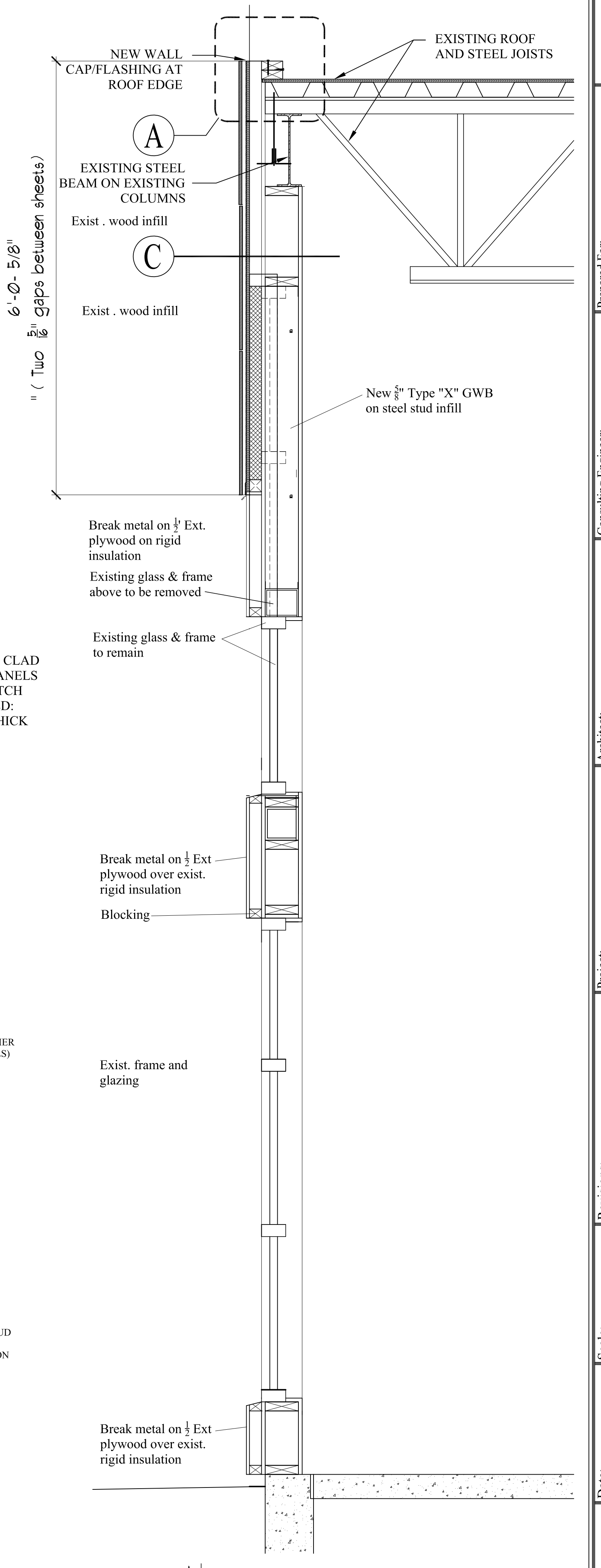
3 ELEVATION OF ALUMINUM PANEL CLAD WALL
SCALE: 1/2" = 1'-0"



2 NEW FOUNDATION AT ALUMINUM PANEL CLAD WALL
SCALE: 1/2" = 1'-0"



1 PLAN OF ALUMINUM PANEL CLAD WALL
SCALE: 1/2" = 1'-0"



4 SECTION THROUGH NEW CURTAIN WALL
SCALE: 1" = 1'-0"

Prepared For:
FIAT OF PORTLAND
 1000 BRIGHTON AVE.
 PORTLAND, MAINE

Consulting Engineer:
ARCHETYPE architects
 48 Union Wharf Portland, Maine 04101
 (207) 772-6022 Fax (207) 772-4056

Project:
FIAT SHOWROOM
 4 RAND ROAD PORTLAND, MAINE

Revisions:
 1-26-11 General revision

Date:
 10 January 2011
 Scale:
 AS NOTED

A3.01
 WALL SECTIONS