

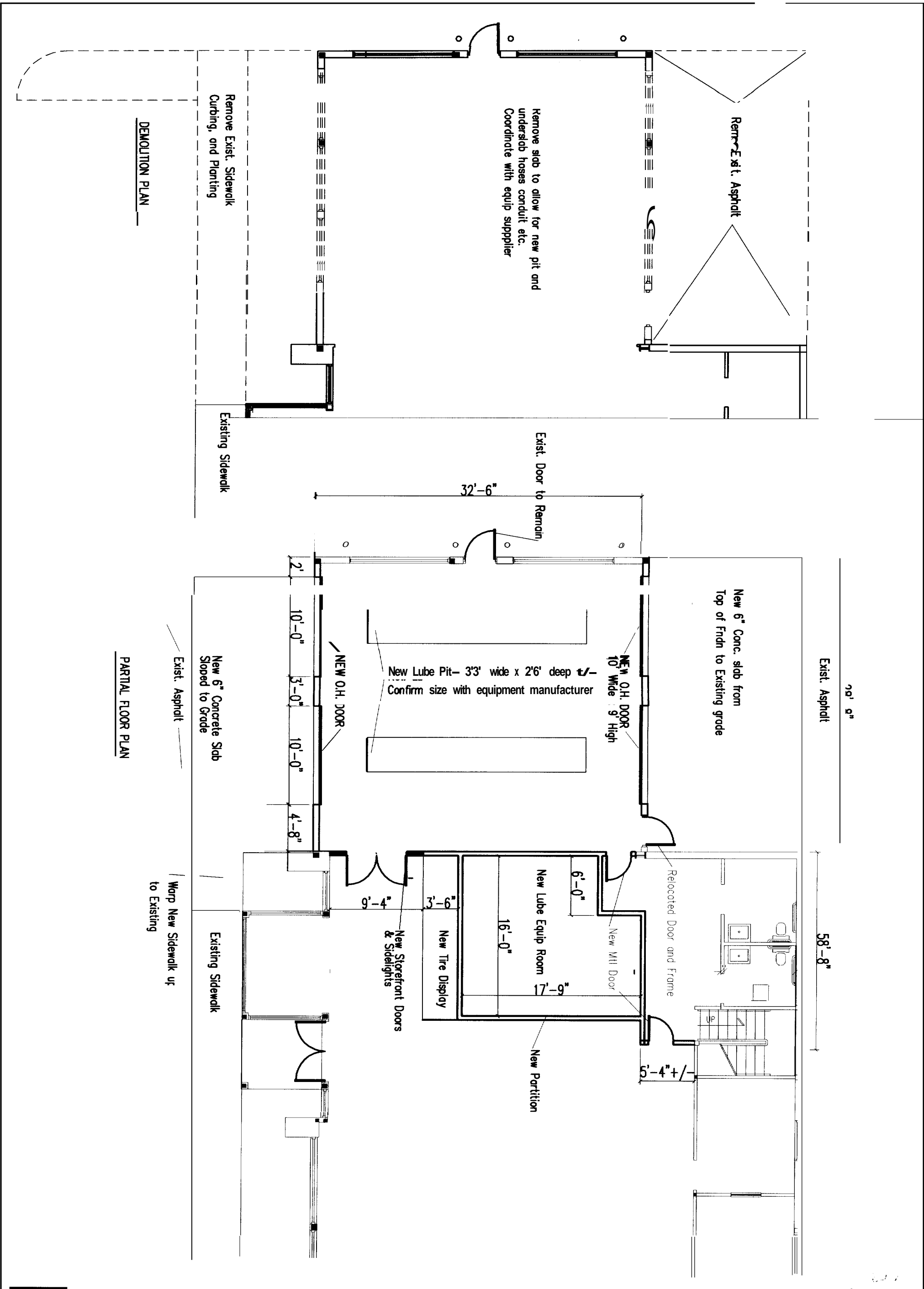
SI

SIE PLAN	Date SEPT. 1, 2004	Scale 1"=50'
	Drawn By	Checked By
Revisions		

Project:
Renovation To
Former MotorCity Building

**ARCHETYPE, P.A.
ARCHITECTS**
48 Union Wharf Portland, Maine 04101
(207) 772-6022 Fax (207) 772-4056

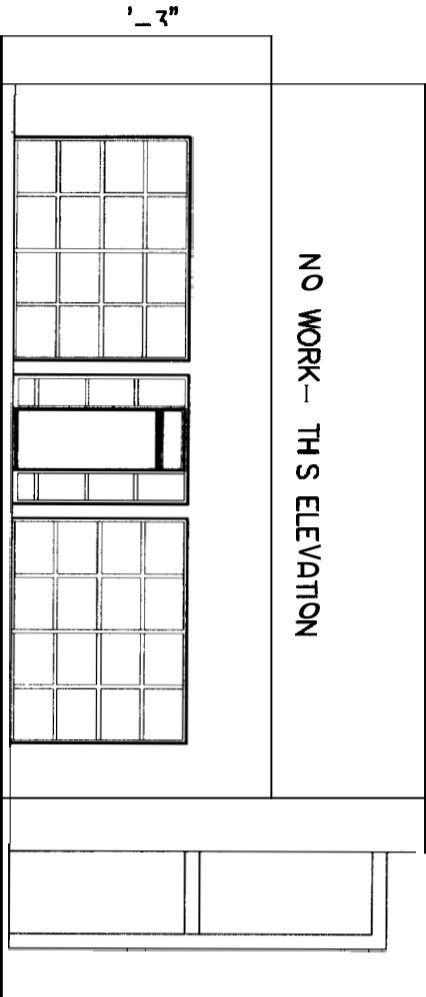
**FOREST CITY
CHEVROLET**
1000 Brighton Ave.
Portland, Maine



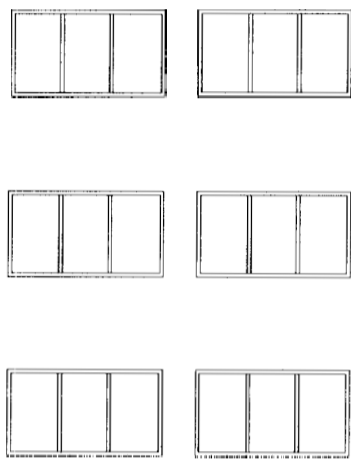
A1	FLOOR PLAN	Date Sept. 1, 2004 Drawn By Revisions	Scale 1/4" = 1'-0" Checked By	Project: Renovation To Former MotorCity Building	ARCHETYPE, P.A. ARCHITECTS 48 Union Wharf Portland, Maine 04101 (207) 772-6022 Fax (207) 772-4056	Project: FOREST CITY CHEVROLET 1000 Brighton Ave. Portland, Maine	100' 0" 58'-8" 32'-6" 10'-0" 3'-0" 10'-0" 4'-8" 9'-4" 3'-6" 6'-0" 16'-0" 17'-9" 5'-4" +/-
	DEMOLITION PLAN	Remove Exist. Sidewalk Curbing, and Planting Existing Sidewalk Remove slab to allow for new pit and underslab hoses conduit etc. Coordinate with equip supplier Remove Exist. Asphalt Existing Sidewalk Exist. Door to Remain New 6" Conc. slab from Top of Fdn to Existing grade NEW O.H. DOOR 10' Wide 9' High New Lube Pit- 3'3" wide x 2'6" deep +/- Confirm size with equipment manufacturer NEW O.H. DOOR Relocated Door and Frame New Tire Display New Lube Equip Room New Mil Door New Partition New Storefront Doors & Sidelights Exist. Asphalt New 6" Concrete Slab Sloped to Grade Exist. Sidewalk Warp New Sidewalk up to Existing	PARTIAL FLOOR PLAN	100' 0" 58'-8" 32'-6" 10'-0" 3'-0" 10'-0" 4'-8" 9'-4" 3'-6" 6'-0" 16'-0" 17'-9" 5'-4" +/-			
	FLOOR PLAN	Date Sept. 1, 2004 Drawn By Revisions	Scale 1/4" = 1'-0" Checked By	Project: Renovation To Former MotorCity Building	ARCHETYPE, P.A. ARCHITECTS 48 Union Wharf Portland, Maine 04101 (207) 772-6022 Fax (207) 772-4056	Project: FOREST CITY CHEVROLET 1000 Brighton Ave. Portland, Maine	100' 0" 58'-8" 32'-6" 10'-0" 3'-0" 10'-0" 4'-8" 9'-4" 3'-6" 6'-0" 16'-0" 17'-9" 5'-4" +/-



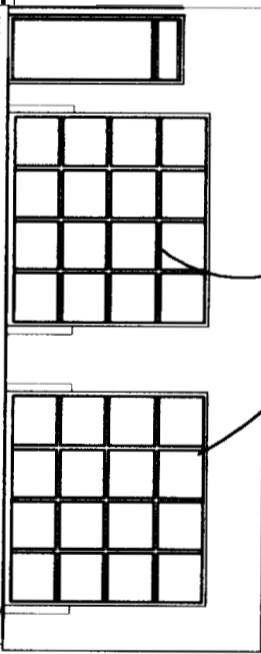
SIDE ELEVATION



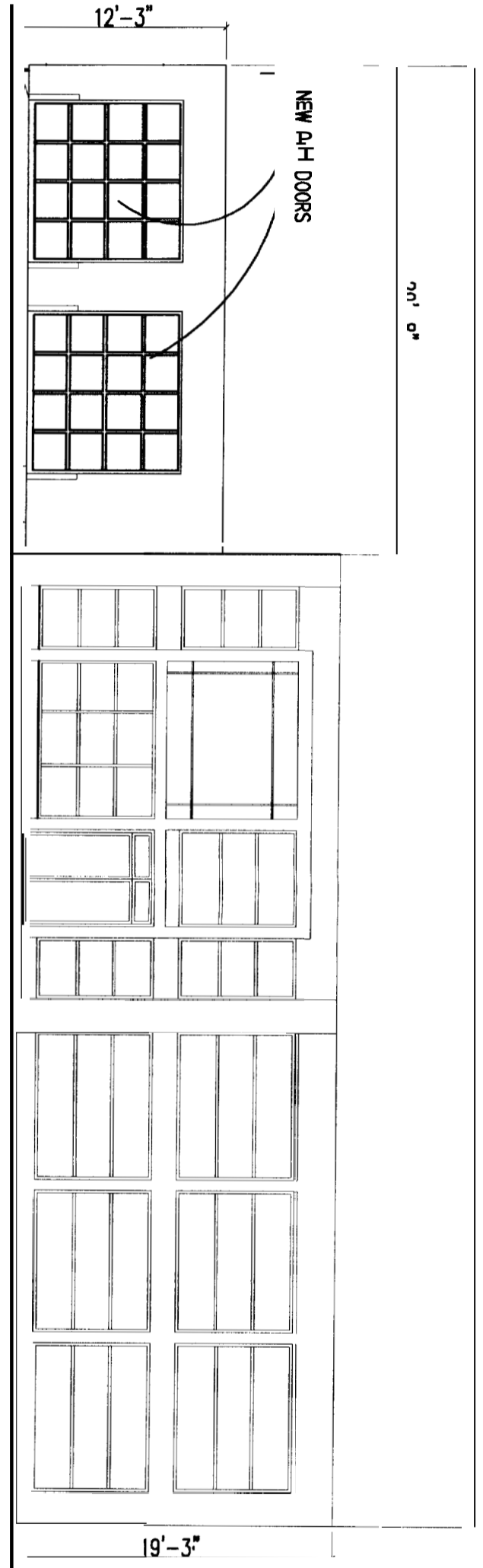
REAR ELEVATION



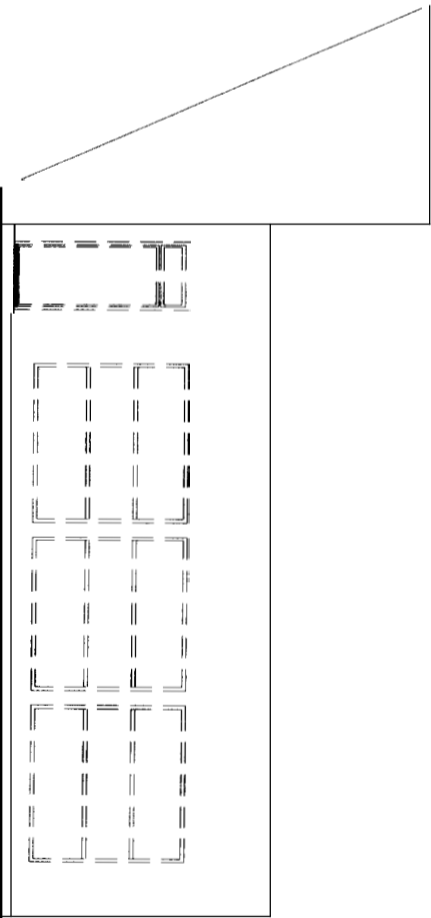
NEW O.H. DOORS



FRONT ELEVATION



DEMOLITION



A2

BUILDING ELEVATIONS

Date SEPT. 1, 2004	Scale As Noted
Drawn By	Checked By
Revisions	

Project:
Renovation To
Former **MotorCity** Building

ARCHETYPE, P.A.
ARCHITECTS

48 Union Wharf Portland, Maine 04101
(207) 772-6022 Fax (207) 772-4056

**FOREST CITY
CHEVROLET**
1000 Brighton Ave.
Portland, Maine

