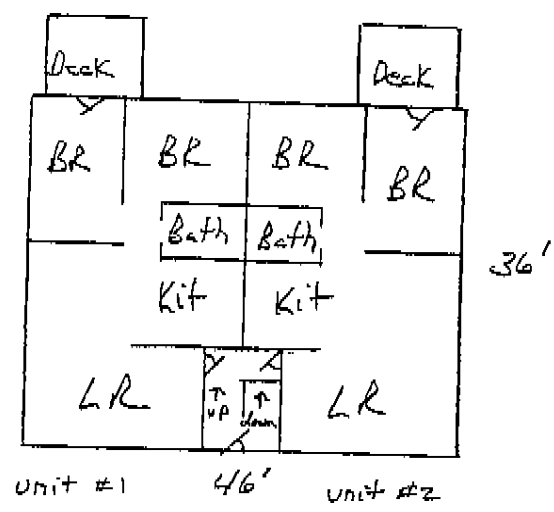


Basement Level

GBA Calculations  
 $36 \times 46 = 1656$   
 $36 \times 23 = 828$   
 Total 2,484 SF



1st Level

unit #1	4-2-1	828 SF
unit #2	4-2-1	828 SF
unit #3	4-2-1	828 SF
Totals	12-6-3	2,484 SF

73 Webb Street  
 Portland, Maine

Legal Description 16789-254-CCRD  
 Parcel 263-B-30-32