

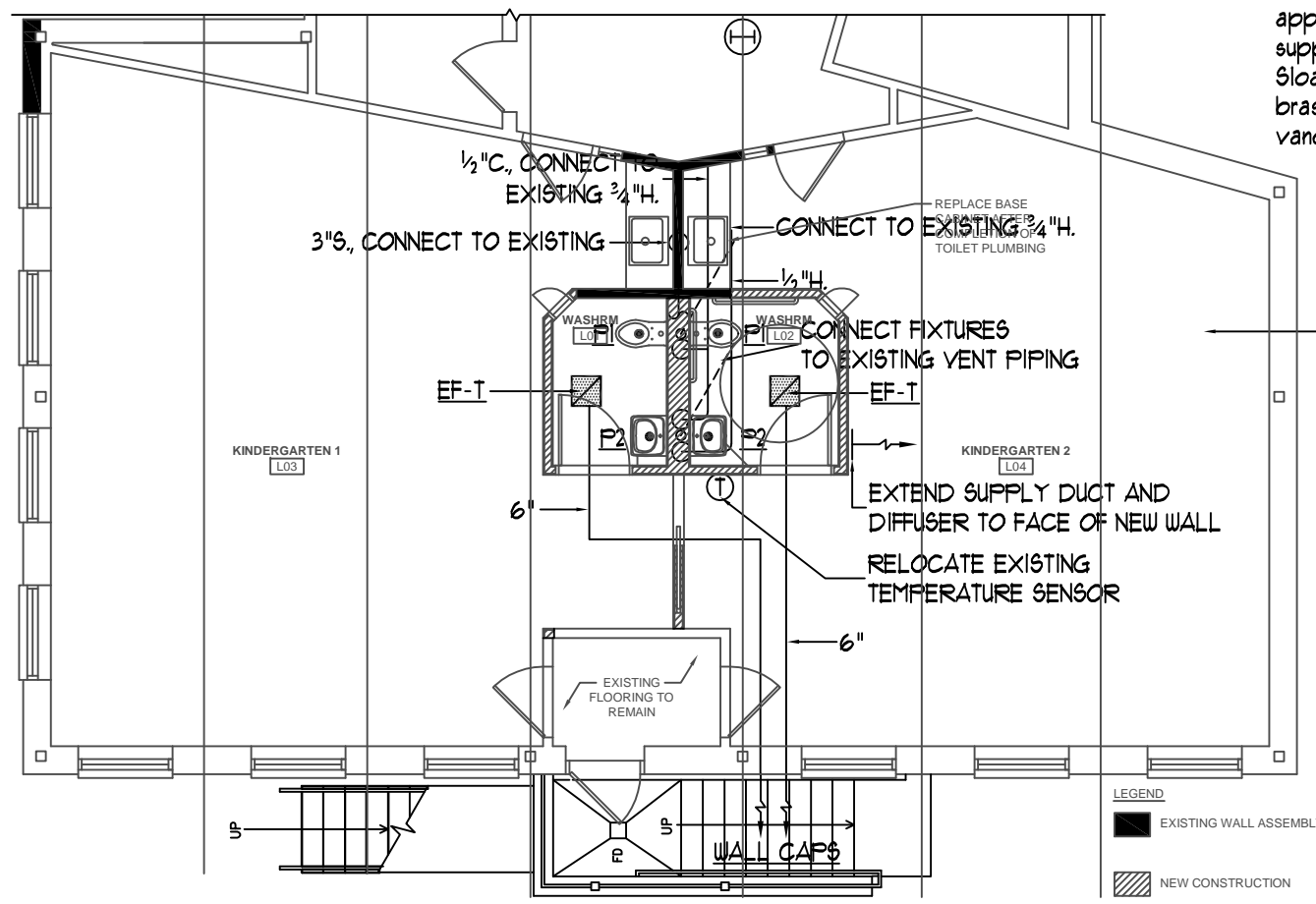
scott simons architects
Designed for human potential

75 York Street
 Portland, Maine 04021
 simonsarchitects.com
 207.772.4656



General Plumbing Notes

1. Water piping shall be Schedule 40 CPVC with solvent-welded joints. Water piping shall have 1" thick fiberglass pipe insulation.
2. Exhaust fans **EF-T** shall be Panasonic "Whispergreen Select", Model FV-05-11VKL1, or equal, 80 cfm @ 0.1" w.g. with Plug n' Play modules, motion sensor and time delay. Provide with two (2) 9W LED lights
3. Water Closets (**P1**) shall be American-Standard "Yorkville" Model 2816016, Toto, Kohler, or approved equal, elongated bowl, pressure assisted, back outlet, 15"H. white vitreous china, 1.28 GPF. Water closet sanitary piping connections shall have 45 degree fittings only. Seat shall be open front without cover.
4. Water closet (**P1A**) shall be American-Standard "Madera" Flowise, 3043.511, Toto, Kohler, or equal, ADA compliant, automatic flush valve (Selectronic" with electronic sensing, battery-operated, floor-mounted, 1.1 GPF. Seat shall be open front without cover
5. Lavatories (**P2**) shall be American-Standard "Lucerne" Model 0356.015, Toto, Kohler, or approved equal, 20"x18", ADA compliant, wall mount for concealed arms, Truebro trap and supplies insulation kit. Furnish with offset tailpiece, grid strainer and P-trap. The faucet shall be Sloan "Optima Solis" Model EAF-275-ISM, Symmons, Bradley, or Chicago-Faucets. Chrome-plated brass, automatic electronic or infrared sensing dual temperature mixing type, battery operated, vandal-resistant. Supplies shall have key stops. Furnish with hot / cold back-checks.



NOTE THAT THE EXISTING FLOOR IS A RADIANT SLAB

DRAWING TITLE:
LOWER LEVEL PLAN

PROJECT NAME:
BREAKWATER CODE + TOILETS
 856 BRIGHTON AVE, PORTLAND MAINE 04102

THIS DRAWING IS THE PROPERTY OF SCOTT SIMONS ARCHITECTS AND IS NOT TO BE COPIED OR REPRODUCED IN PART OR WHOLE. 2015 © SCOTT SIMONS ARCHITECTS, LLC

DATE OF ISSUE:
 APRIL 17, 2017
 DESCRIPTION:
 PERMITTING
 SCALE:
 1/8" = 1'-0"
 PROJECT NUMBER:
 2016-0030

M101