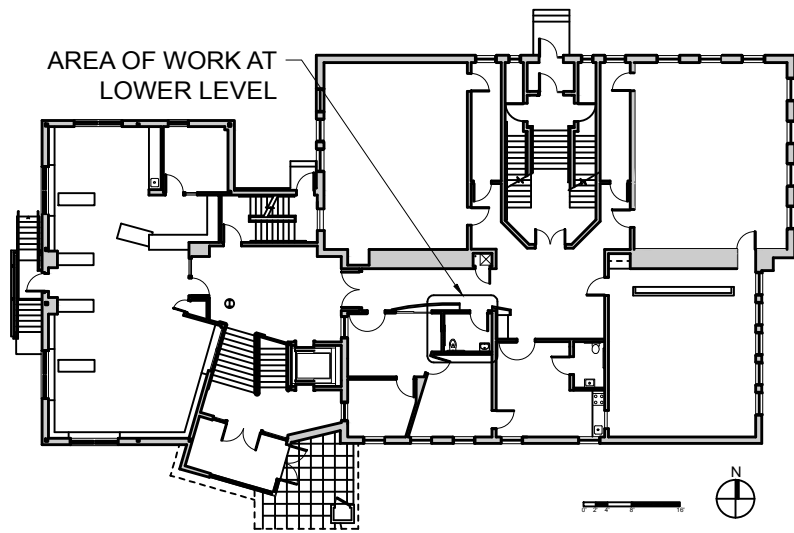


AREA OF WORK AT LOWER LEVEL



AREA OF WORK AT LOWER LEVEL

CODE SUMMARY

APPLICABLE CODES

Maine Uniform Building and Energy Code "MUBEC"
Consists of the following applicable codes:

- 2009 International Building Code (IBC)
- 2009 International Existing Building Code (IEBC)
- 2009 International Energy Conservation Code (IECC)
- 2007 ASHRAE 62.1 (Ventilation for Acceptable Indoor Air Quality)
- 2007 ASHRAE90.1 - (Energy Standard for Buildings except Low-Rise Residential Buildings) editions without addenda.
- E-1465-2006, Standard Practice for Radon Control Options for the Design and Construction of New Low-Rise Residential Buildings.
- Maine State Internal Plumbing Code based on the 2009 Uniform Plumbing Code
- State of Maine Subsurface Wastewater Disposal Rules Version dated: Jan 18, 2011
- 2011 National Electrical Code (NEC)

Portland City Code, Chapter 10: Fire Prevention and Protection

Fire/ Life Safety

NFPA Life Safety Code as adopted by the State of Maine
Including but not limited to:

- 2009 NFPA 001: Fire Code
- 2009 NFPA 101: Life Safety Code
- 2016 NFPA 13: Installation of Sprinkler Systems, [2010 Edition through Equivalency]

Accessibility

2010 ADA Standards for Accessible Design

NOTE: All Codes shall include changes/amendments by the State of Maine

OCCUPANCY CLASSIFICATION (IBC Sec 302, 303, 304) (NFPA 101)
Educational E

AUTOMATIC SUPPRESSION SYSTEM

(NFPA 13)

Automatic sprinkler system provide per NFPA 13 throughout

GENERAL BUILDING INFORMATION AND ALLOWABLE BUILDING HEIGHTS AND AREA

(IBC Chapter 5, Table 503) (NFPA)

Building Height (To mid-height of the roof) - 2 1/2 Stories
Total Area 21,350
Perimeter 418'

TYPES OF CONSTRUCTION

(IBC Table 601, Sec 602)
(NFPA 220)
Type IIIA

FIRE RESISTIVE RATINGS

(IBC Table 601), (NFPA Table A.8.2.1.2)

	TYPE III	III
STRUCTURAL FRAME	1	0
BEARING WALLS, EXTERIOR AND INTERIOR	2	0
	1	
NON-BEARING WALLS AND PARTITIONS, EXTERIOR	0	0
NON-BEARING WALLS AND PARTITIONS, INTERIOR	0	0
FLOOR CONSTRUCTION AND SECONDARY MEMBERS	1	0

OCCUPANCY LOAD

(IBC Table 1004.1.1), (NFPA 101 Table 7.3.1.2)
Classroom 20 Net Sqft per Occupant
Daycare 35 Net Sqft per Occupant

OCCUPANCY LOAD

(IBC Table 1004.1.1), (NFPA 101 Table 7.3.1.2)
Classroom 20 Net Sqft per Occupant
Daycare 35 Net Sqft per Occupant

MEANS OF EGRESS

(IBC Chapter 10, NFPA 101 Chapter 7,14,15)

EGRESS WIDTH PER OCCUPANT

(IBC 1005.1)
(IEBC Table 1301.6.11(1))

0.3 Inches per occupant for stairways
0.2 Inches for other egress components

STAIRWAY WIDTH

(IEBC 1301.6.11), (NFPA 101 Table 7.2.2.2.1.2(B), 7.3.3.1.2)
0.3 Inches per occupant
44 inch width min. for <2000 yet >50

EXIT ACCESS

Common path of egress travel

(IBC 1014.3),(IBC 1028.8)
For Educational <75'
(NFPA 101 12.2.5.1.2 / Table A.7.6)
For Educational <100'

Corridor Fire Resistance

(IBC 1018.1)
1 hour

Corridor Width

(IBC 1018.2), (NFPA 101 14.2.3.2)
Not less than 44"
Not less than 36" when less than 50 occupants
Not less than 72" at exit access corridors,
or corridors with the capacity of ≥100

Dead-End Corridor

(IEBC 705.6)
Dead-end corridors in occupancy E ≤50'
(NFPA 101 14.2.6.3, Table A.7.6)
Travel distance to exit: 200'

LIFE SAFETY PLAN LEGEND

SEE A101 FOR PARTITION TYPES

☒ FIRE EXTINGUISHER

ROOM NUMBER
###OCC OCCUPANTS
#####SF ROOM AREA

OCCUPANT EGRESS LOAD AT DOOR
DOOR OCCUPANT CAPACITY
↓ DIRECTION OF EGRESS

— 1-HOUR FIRE RATED SEPARATION WITH 1 HOUR OPENINGS

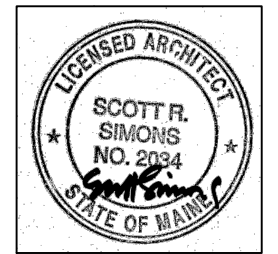
— 2-HOUR RATING

— SMOKE SEPARATION WITH 20 MINUTE OPENINGS

□ SMOKE SEPARATION WITH 20 MINUTE OPENINGS



75 York Street
Portland, Maine 04021
simonsarchitects.com
207.772.4656



DRAWING TITLE:
CODE ANALYSIS
 PROJECT NAME:
BREAKWATER CODE + TOILETS
 856 BRIGHTON AVE, PORTLAND MAINE 04102

THIS DRAWING IS THE PROPERTY OF SCOTT SIMONS ARCHITECTS AND IS NOT TO BE COPIED OR REPRODUCED IN PART OR WHOLE. 2015 © SCOTT SIMONS ARCHITECTS, LLC

DATE OF ISSUE:

04.19.17

DESCRIPTION:

PERMIT SET

SCALE:

PROJECT NUMBER:

2016-0030

G002