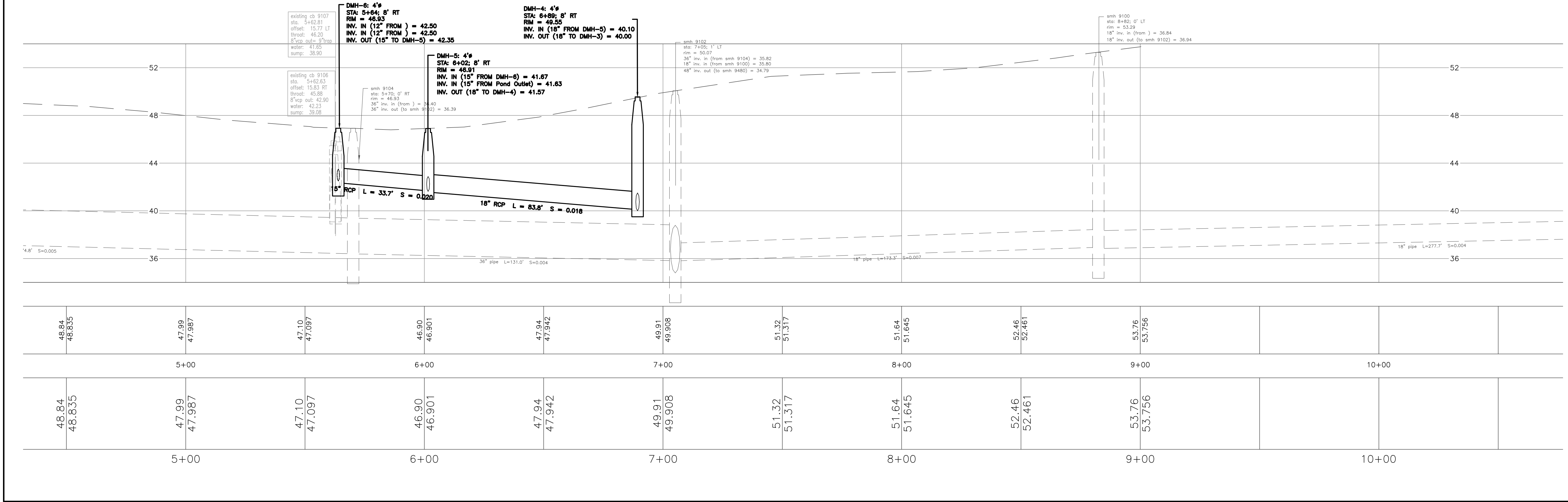
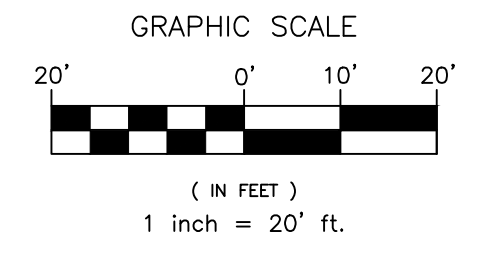


DMH-5: 4'6"
 STA: 6+01.8; 7.6' RT
 RIM = 46.91
 15" INV. IN (FROM DMH-6) = 41.67
 12" INV. IN (FROM Pond Outlet) = 41.63
 18" INV. OUT (TO DMH-4) = 41.57

DMH-6: 4'6"
 STA: 5+63.9; 7.9' RT
 RIM = 46.93
 12" INV. IN (FROM) = 42.50
 15" INV. IN (FROM) = 42.50
 15" INV. OUT (TO DMH-5) = 42.35

DMH-4: 4'6"
 STA: 6+89.3; 7.8' RT
 RIM = 49.55
 18" INV. IN (FROM DMH-5) = 40.10
 18" INV. OUT (TO DMH-3) = 40.00

| STORM DRAIN PIPE SCHEDULE | | | | STORM DRAIN SCHEDULE - STANDARD STRUCTURES | | | | |
|---------------------------|------|--------|-------|--|------|-------|------------------------|--------------------|
| Pipe Name | Size | Length | Slope | STRUCTURE | SIZE | RIM | INV. IN/SIZE (FROM) | INV. OUT/SIZE (TO) |
| SD-7 | 15" | 37.15 | 1.00% | DMH-4 | 4'6" | 49.55 | 40.10/18"(DMH-5) | 40.00/18"(DMH-3) |
| SD-9 | 12" | 19.20 | 1.00% | DMH-5 | 4'6" | 46.91 | 41.67/15"(DMH-6) | 41.57/18"(DMH-4) |
| SD-8 | 12" | 3.61 | 1.66% | DMH-6 | 4'6" | 46.93 | 42.50/12" 42.50/12" | 42.35/15"(DMH-5) |
| SD-6 | 15" | 33.68 | 2.02% | Pond Outlet | ???" | 43.23 | | 42.00/15"(DMH-5) |
| SD-5 | 18" | 83.81 | 1.75% | | | | | |



DMH-6: 4'6"
 STA: 5+64; 8' RT
 RIM = 46.93
 INV. IN (12" FROM) = 42.50
 INV. IN (12" FROM) = 42.50
 INV. OUT (15" TO DMH-5) = 42.35

DMH-4: 4'6"
 STA: 6+89; 8' RT
 RIM = 49.55
 INV. IN (18" FROM DMH-5) = 40.10
 INV. OUT (18" TO DMH-3) = 40.00

DMH-5: 4'6"
 STA: 6+02; 8' RT
 RIM = 46.91
 INV. IN (15" FROM DMH-6) = 41.67
 INV. IN (15" FROM Pond Outlet) = 41.63
 INV. OUT (18" TO DMH-4) = 41.57

smh 9102
 sta: 7+05; 1' LT
 rim = 50.07
 36" inv. in (from smh 9104) = 35.82
 18" inv. in (from smh 9105) = 35.80
 48" inv. out (to smh 9480) = 34.79

smh 9100
 sta: 8+82; 0' LT
 rim = 53.29
 18" inv. in (from) = 36.84
 18" inv. out (to smh 9102) = 36.94

Civil 3D 2013 Drawing Name: Rowe Ave-Greenlawn CSO 2015.dwg
 Civil 3D 2013 Survey Database: Rowe Ave-Greenlawn CSO 2015.DB

DESIGNED BY: JRP
 DRAWN BY: JRP
 CHECKED BY: JRP
 SCALE: 1" = 20'
 DATE: JANUARY 2017

PROJECT FIELD BOOK:
 176/14, 176/23, 394/17, 397/24;
 410/93, 482/6, 484/5, 619/16;
 638/6, 647/5, 649/4, 658/16;
 673/10, 673/13, 673/15, 673/17, 673/18, 673/19, 673/20, 673/21, 673/22, 673/23, 673/24, 673/25, 673/26, 673/27, 673/28, 673/29, 673/30, 673/31, 673/32, 673/33, 673/34, 673/35, 673/36, 673/37, 673/38, 673/39, 673/40, 673/41, 673/42, 673/43, 673/44, 673/45, 673/46, 673/47, 673/48, 673/49, 673/50, 673/51, 673/52, 673/53, 673/54, 673/55, 673/56, 673/57, 673/58, 673/59, 673/60, 673/61, 673/62, 673/63, 673/64, 673/65, 673/66, 673/67, 673/68, 673/69, 673/70, 673/71, 673/72, 673/73, 673/74, 673/75, 673/76, 673/77, 673/78, 673/79, 673/80, 673/81, 673/82, 673/83, 673/84, 673/85, 673/86, 673/87, 673/88, 673/89, 673/90, 673/91, 673/92, 673/93, 673/94, 673/95, 673/96, 673/97, 673/98, 673/99, 673/100

OTHER FIELD BOOKS USED:
 113/18, 113/19, 113/20, 113/21, 113/22, 113/23, 113/24, 113/25, 113/26, 113/27, 113/28, 113/29, 113/30, 113/31, 113/32, 113/33, 113/34, 113/35, 113/36, 113/37, 113/38, 113/39, 113/40, 113/41, 113/42, 113/43, 113/44, 113/45, 113/46, 113/47, 113/48, 113/49, 113/50, 113/51, 113/52, 113/53, 113/54, 113/55, 113/56, 113/57, 113/58, 113/59, 113/60, 113/61, 113/62, 113/63, 113/64, 113/65, 113/66, 113/67, 113/68, 113/69, 113/70, 113/71, 113/72, 113/73, 113/74, 113/75, 113/76, 113/77, 113/78, 113/79, 113/80, 113/81, 113/82, 113/83, 113/84, 113/85, 113/86, 113/87, 113/88, 113/89, 113/90, 113/91, 113/92, 113/93, 113/94, 113/95, 113/96, 113/97, 113/98, 113/99, 113/100

BENCHMARK CARDS: Brighton Av (at Essex St) JRP

C.C.R.D. PLANS:
 PB 11 PG 1, 2, 3, 4, 5, 6, 7, 8, 9, 10, 11, 12, 13, 14, 15, 16, 17, 18, 19, 20, 21, 22, 23, 24, 25, 26, 27, 28, 29, 30, 31, 32, 33, 34, 35, 36, 37, 38, 39, 40, 41, 42, 43, 44, 45, 46, 47, 48, 49, 50, 51, 52, 53, 54, 55, 56, 57, 58, 59, 60, 61, 62, 63, 64, 65, 66, 67, 68, 69, 70, 71, 72, 73, 74, 75, 76, 77, 78, 79, 80, 81, 82, 83, 84, 85, 86, 87, 88, 89, 90, 91, 92, 93, 94, 95, 96, 97, 98, 99, 100

STREET RECORDS: B2 P131, B2 P199
 TAX MAPS: 260 & 261

ROWE AVENUE SEWER SEPARATION PROJECT
 PRELIMINARY SITE PLAN FOR LEVEL 1 SITE PLAN APPLICATION
 FORE RIVER INTERCEPTOR TO LEVIA STREET.

CITY OF PORTLAND, MAINE
 PUBLIC WORKS DEPARTMENT
 ENGINEERING DIVISION

SHEET # C-1