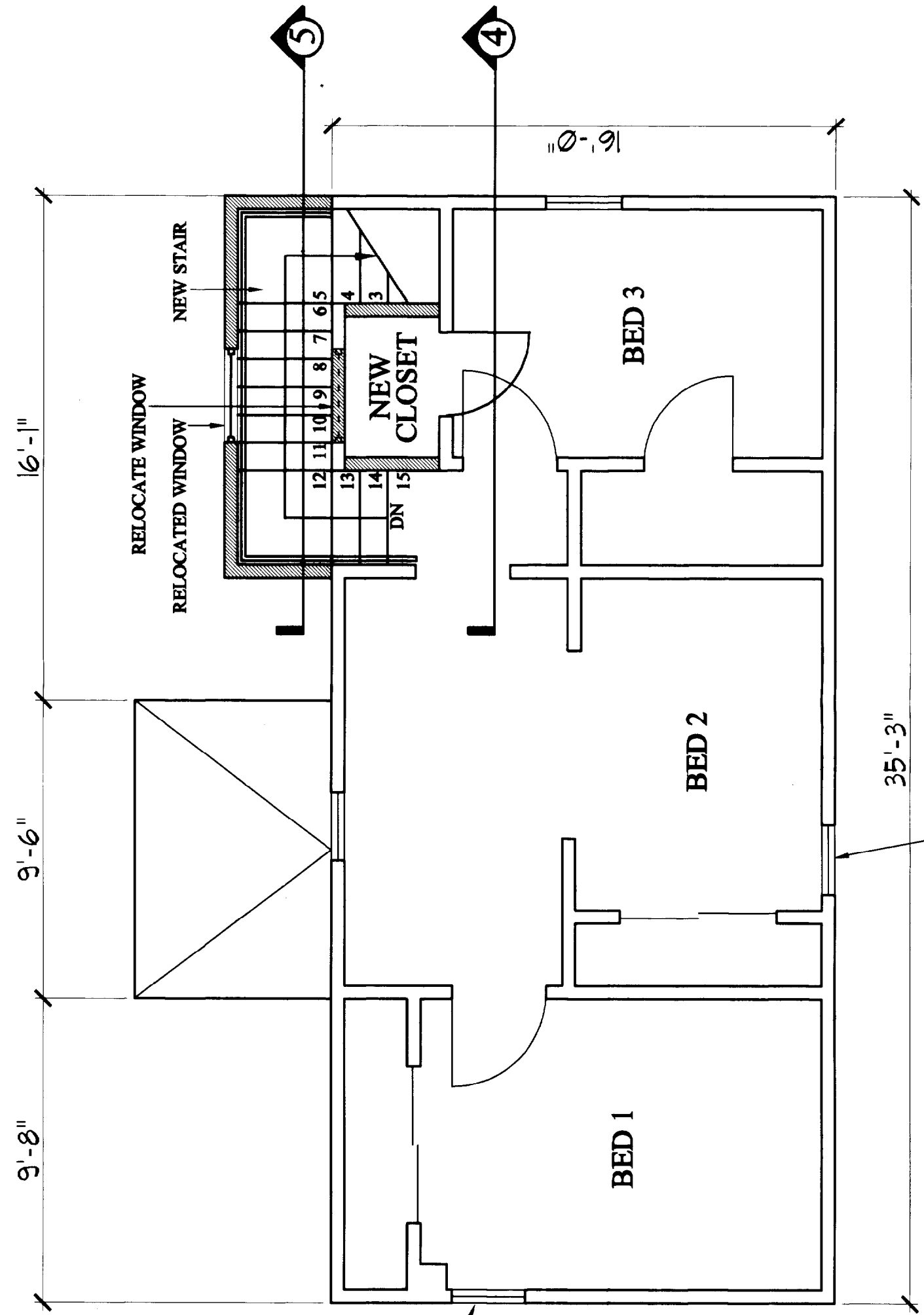
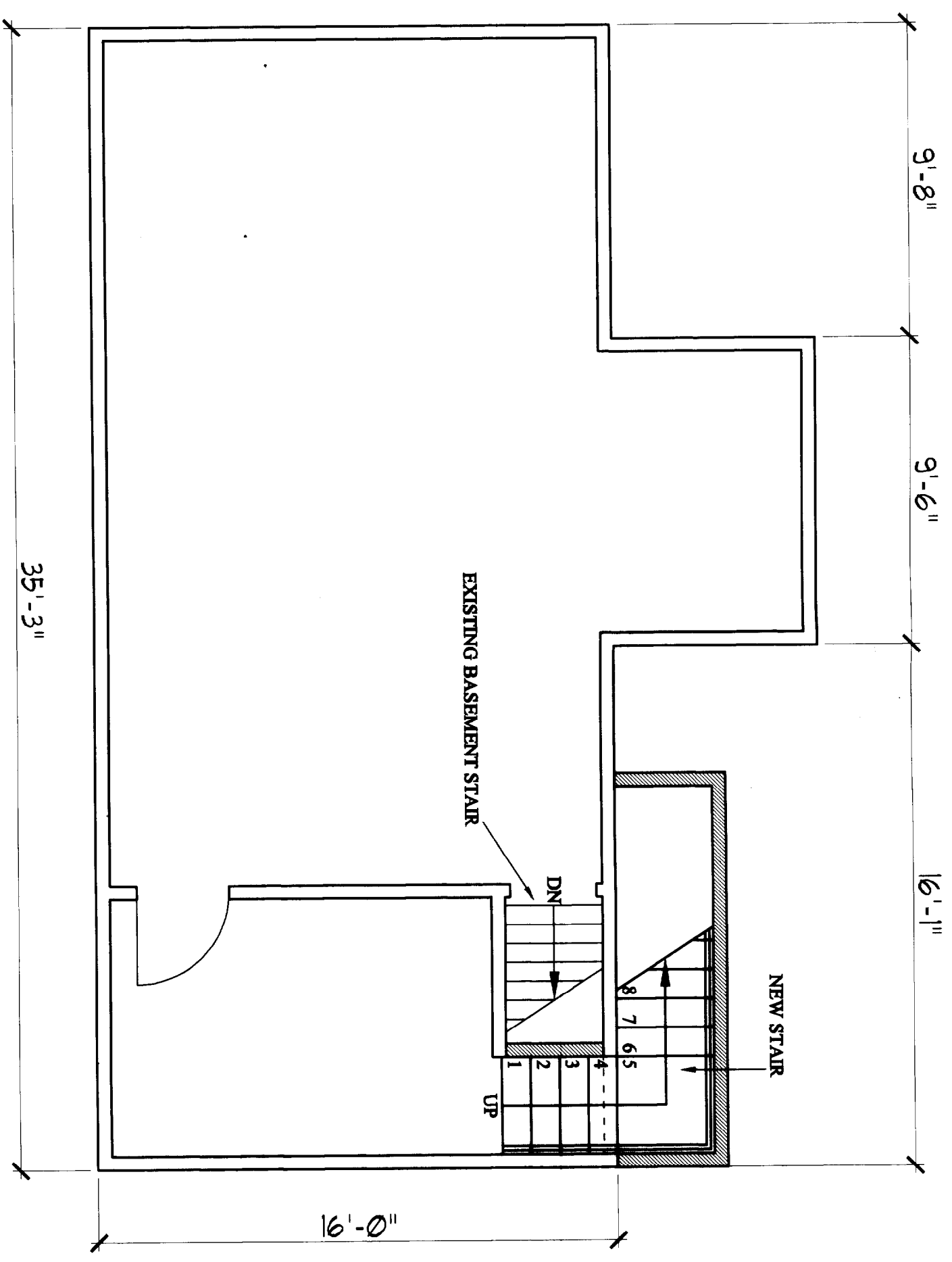


NOTE: ALL BEI
REPLACED WITH



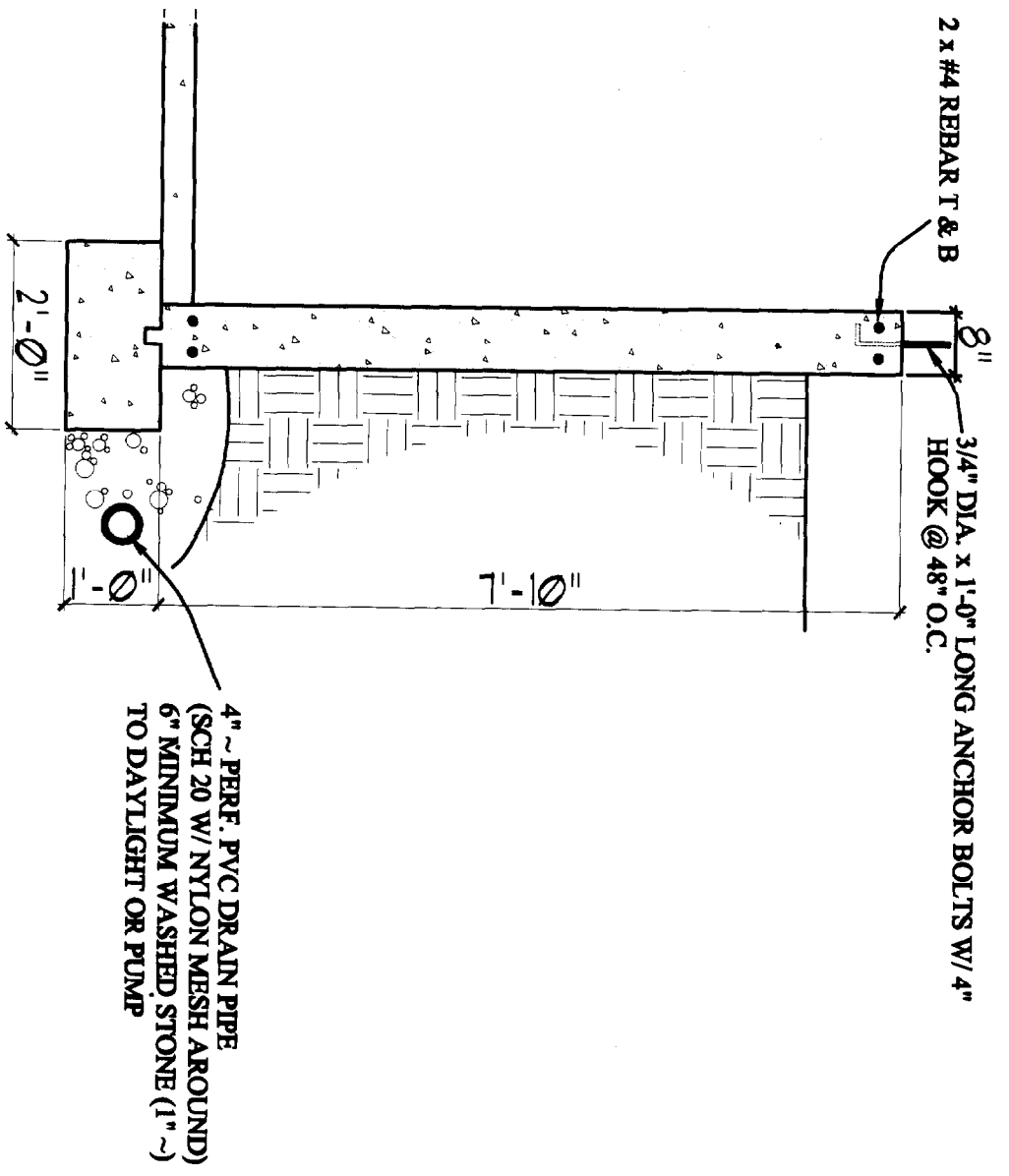
WINDOW OPENING WILL NEED TO BE
INCREASED, IN THIS LOCATION, TO MEET
EGRESS REQUIREMENTS

WINDOW OPENING WILL NEED TO BE
INCREASED, IN THIS LOCATION, TO MEET

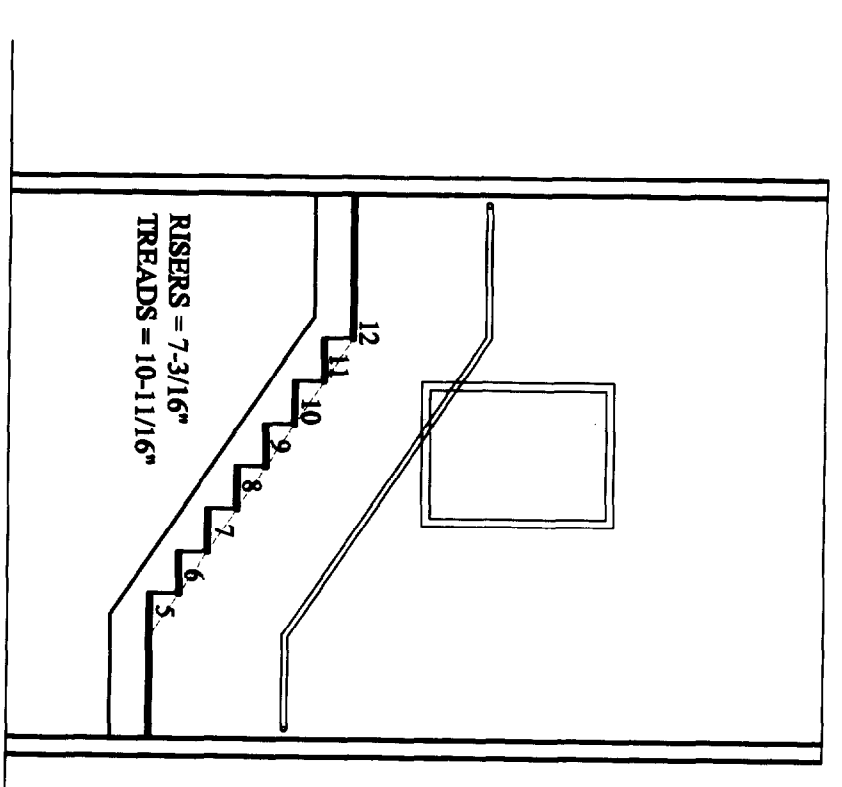


① 1st FLOOR
 1/4" = 1'-0"

⑥ 1/4"



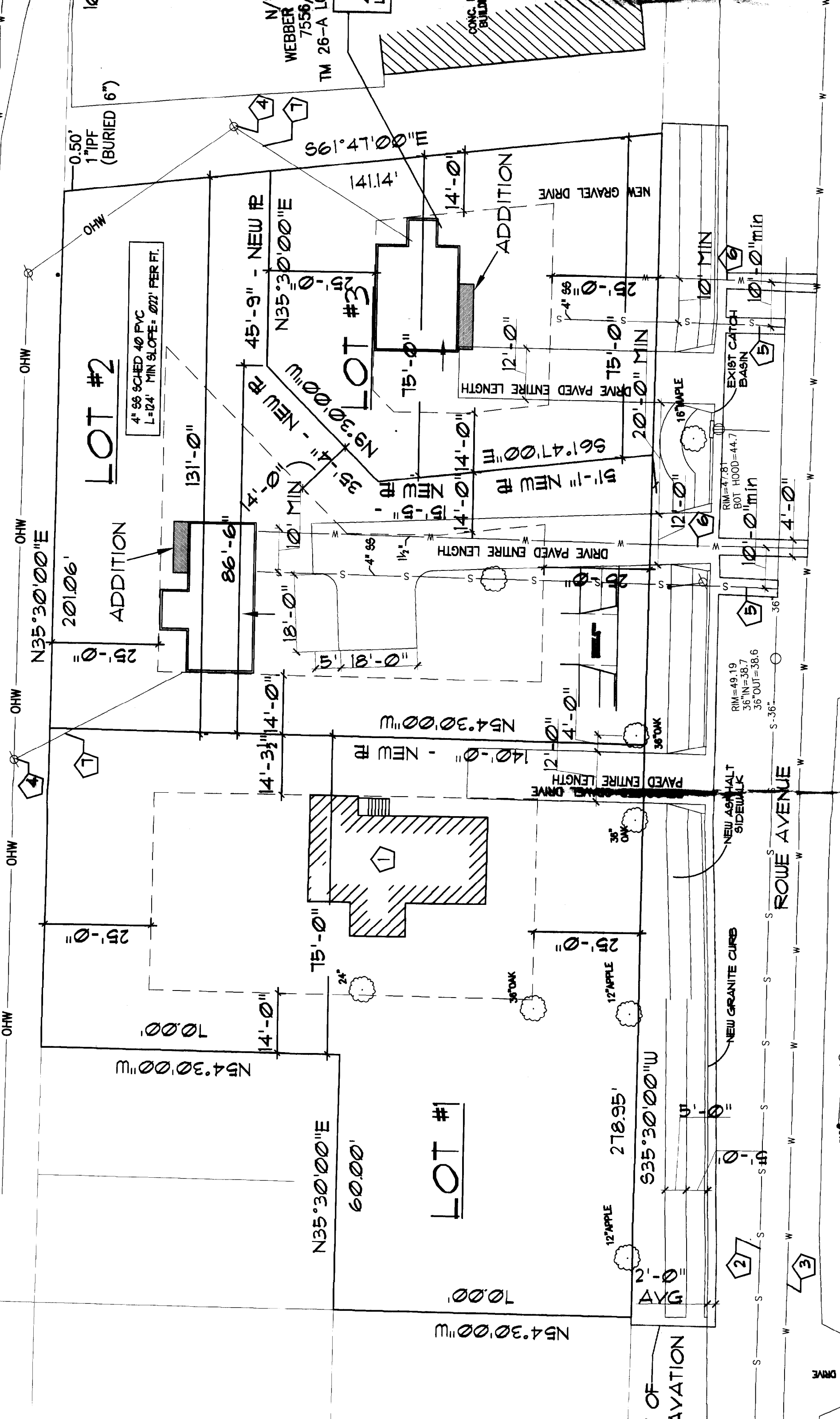
AL FOUNDATION SECTION



5 SECTION
1/4" = 1'-0"

| | | | | |
|-------------|-------------------------------------|-------------------------------|--------------|----------------------------------|
| <h1>AI</h1> | WEBB STREET PROPOSED ALTERATIONS | OCT 06, 2003 | 1/4" = 1'-0" | Project: FORE CHEV |
| | | Revisions | | |
| | | 10-30-03 Footing Drains Added | | |
| | | | | |

TERRACE AVENUE (GRAVEL)



LOT #2

LOT #1

4" S6 SCHED 40 PVC
L=24' MIN SLOPE = 022' PER FT.

ADDITION

ADDITION

OHW

OHW

OHW

OHW

OHW

OHW

OHW

OHW

OHW

OHW

OHW

OHW

OHW

OHW

OHW

OHW

OHW

OHW

OHW

OHW

OHW

OHW

OHW

OHW

OHW